

ATLANTIC TRAVEL & TOURS

NORTH EUROPE ICELAND

**INSPIRATION FOR A TAILOR - MADE
TRAVEL**



WWW.VISITATLANTICTRAVELTOURS.COM

FROM THE CHIEF EXECUTIVE OFFICER - FOUNDER

Dear travelers,

We are delighted by your interest in Atlantic Travel & Tours, a **distinctive** tour operator specializing in **bespoke journeys** crafted specifically for **unique categories of travelers**. Forget about pre-packaged tours; here, every journey is a **custom creation**!

In an ever-evolving digital landscape, where information is readily accessible and travelers are more informed and discerning, we are committed to empowering individuals to become the true **architects** of their own adventures.

This brochure is replete with inspiration that transcends conventional tourist paths, and we trust it will provide you with excellent **ideas** to plan your next journey with our assistance. We eagerly anticipate accompanying you on this extraordinary experience!



Steve Tabacchi

DR. STEVE TABACCHI
CEO - FONDATORE
ATLANTIC TRAVEL & TOURS



SUMMARY OF CONTENTS

• REASONS TO TRAVEL WITH US

DISCOVER WHAT MAKES OUR TOUR OPERATOR DISTINCTIVE AND UNMATCHED!

• OUR TRAVEL INSPIRATIONS

EXPLORE OUR TRAVEL ITINERARIES AND BE INSPIRED TO CRAFT AN ADVENTURE THAT TRANSCENDS THE CONVENTIONAL MASS TOURISM ROUTES.

• FAIRS, FESTIVALS, AND EVENTS

TAKE TIME TO EXPLORE FAIRS AND EVENTS: EXCEPTIONAL OPPORTUNITIES TO ENHANCE YOUR JOURNEY WITH ENGAGING ACTIVITIES THAT CONNECT YOU WITH LOCAL CULTURES AND TRADITIONS.

• GET IN TOUCH WITH US

ARE YOU INTERESTED IN ONE OF OUR ITINERARIES? WOULD YOU LIKE TO CUSTOMIZE IT TO SUIT YOUR NEEDS? CONTACT US! WE WOULD BE DELIGHTED TO ASSIST YOU IN CREATING A PERSONALIZED ITINERARY AND QUOTE.



REASONS TO TRAVEL WITH US

**DISCOVER WHAT MAKES
OUR TOUR OPERATOR
DISTINCTIVE AND
UNMATCHED!**

BESPOKE TRAVEL FOR EVERYONE



OUR TRAVEL ITINERARIES

We exclusively curate itineraries for innovative and original travel experiences that diverge from the conventional paths of mass tourism. Our aim is for each customer to be the protagonist of their own journey.

OUR TRAVEL CLASSES

We arrange travel for the following categories:

- **FIRST**
- **PREMIUM**
- **ECONOMY**

TRAVEL CATEGORIES



HONEYMOONS

One of the most beautiful and significant events in life warrants celebration with the highest level of attention and meticulous care for every detail.



ANNIVERSARIES

Seize the exceptional opportunity to commemorate and rejuvenate your bond of love in an ideal setting for the occasion, complete with a potential wedding vow renewal ceremony where applicable.



DISABLED - GROUPS AND INDIVIDUALS

Life is an experience to be embraced fully, without exceptions. We are here to provide our assistance in organizing customized trips tailored to meet the diverse needs associated with various disabilities.



WELLNESS - GROUPS AND INDIVIDUALS

We strive to incorporate extraordinary moments into our itineraries, whenever feasible, allowing for immersion in the beauty of nature, as well as in wellness centers and fitness facilities designed for rejuvenation and revitalization.



SENIOR - GROUPS AND INDIVIDUALS

The ideal moment to embrace life fully and explore the world is now, alongside friends, former colleagues, and family! Seize the opportunity to forge unforgettable memories!

WE ORGANIZE ITINERARIES USING THE FOLLOWING TRANSPORTS



CAR

- ✓ RENTAL



VAN

- ✓ RENTAL
- ✓ SCHEDULED TOURS WITH DRIVER



COACH

- ✓ RENTAL WITH DRIVER
- ✓ SCHEDULED TOURS WITH DRIVER



MOTORHOME

- ✓ RENTAL

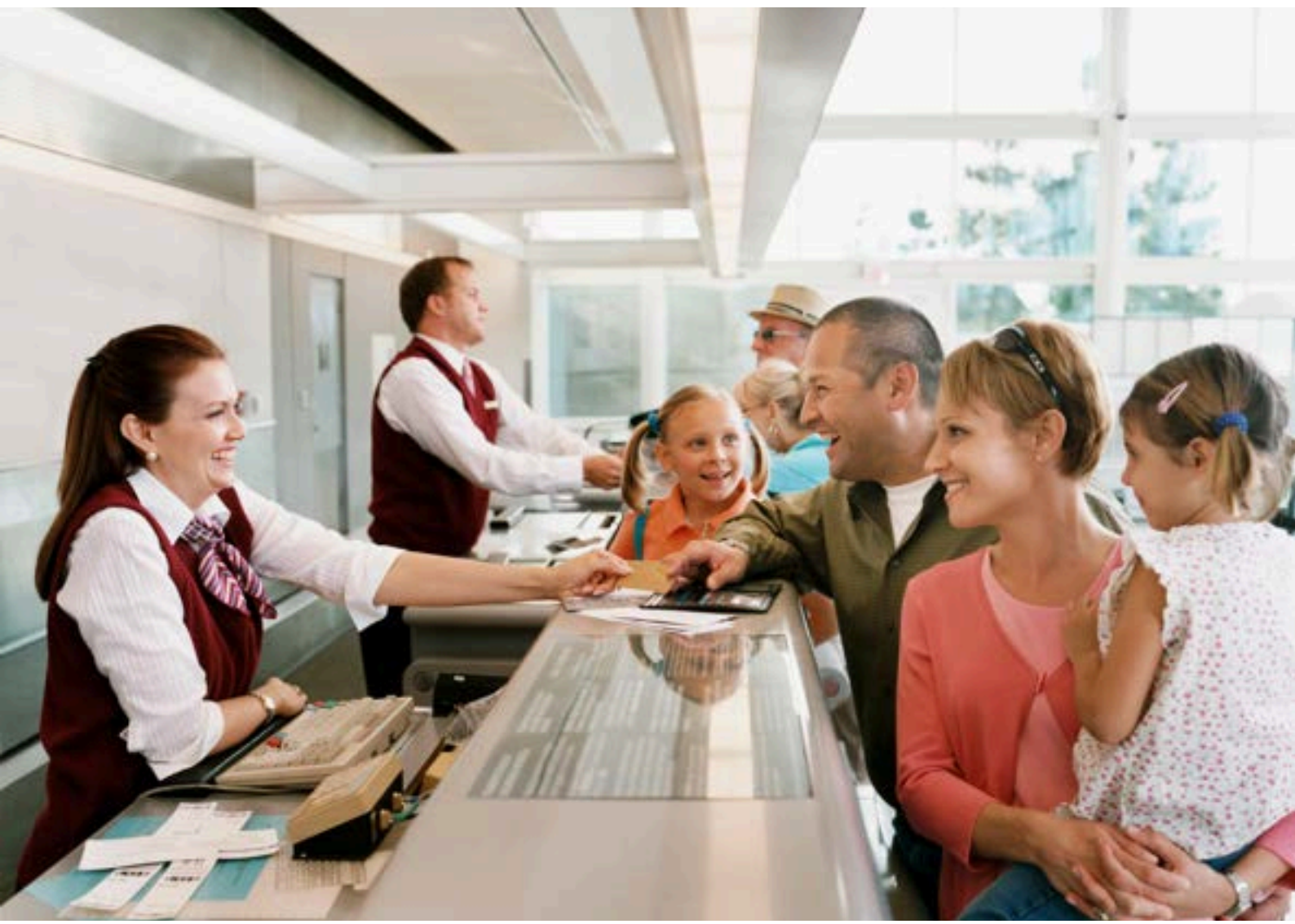


MOTORCYCLE

- ✓ CHARTER SERVICES
- ✓ TAILOR MADE TRAVEL ITINERARIES

PRIORITY CHECK-IN AND CHECKED BAGGAGE

Bid farewell to lengthy check-in queues! With our priority check-in service, you can swiftly obtain your boarding pass and check in your baggage. We are consistently prepared to provide this option, contingent upon airline availability, to enhance your travel experience, whether you are flying in premium or economy class. **Do not squander time; opt for comfort!**



NO QUEUES AT THE AIRPORT WITH THE FAST TRACK SERVICE



We understand the frustration of enduring lengthy waits at airport security. Therefore, we consistently incorporate fast track access into our travel packages, allowing you to bypass the queue and enjoy a stress-free experience.

The service is contingent upon the availability at each airport, thus we cannot assure its constant accessibility. Nevertheless, we are pleased to announce that it has been implemented in the majority of the airports we utilize. **Seize this opportunity!**





COMFORT IN AIRPORT LOUNGES

Once reserved solely for business and first-class passengers, airport lounges are now available to travelers in other classes as well. We provide the highest level of comfort and luxury to ensure your airport experience is memorable. In our travel packages, we consistently strive to include access to these exclusive areas at both departure and arrival points (subject to airport and airline availability). Relax, indulge in culinary delights, savor fine beverages, and enjoy refreshing showers, all within elegant and tranquil settings. **Seize this exceptional opportunity!**



A digital display showing currency exchange rates. Each entry consists of a small flag icon, the currency code, and the rate. The background is dark with a subtle grid pattern.

	AUD	7.01
	NZD	5.05
	JPY	0.0913
	GBP	11.23
	EUR	9.71
	SGD	5.35
	CHF	7.00



OTHERS SERVICES

OUR EXCEPTIONAL
PARTNERSHIPS WITH
DIVERSE SUPPLIERS ENABLE
US TO PROVIDE OUR
CUSTOMERS WITH THE
FINEST OF THE FOLLOWING
SERVICES

ADVANCED LUGGAGE SHIPPING
TOURIST VISAS
CURRENCY EXCHANGE
INSURANCE POLICIES



ONE FREE INDIVIDUAL FOR EVERY 15 PAYING CUSTOMERS

Take advantage of our **perpetually active** promotion. If you can gather a **minimum of 15 individuals**, one person will receive a **complimentary** trip. Consider anyone who might be interested among family, friends, colleagues, or others. Additionally, if you require a tour leader or tour guide to assist you and your group throughout the entire tour, we can provide this service as well

ALWAYS TRAVEL WITH A PREMIUM DISCOUNT!



-20%

- **ACTIVE YEAR-ROUND**
- **FOR ALL CATEGORIES OF TRAVELERS**
- **NO MINIMUM SPENDING THRESHOLD REQUIRED**



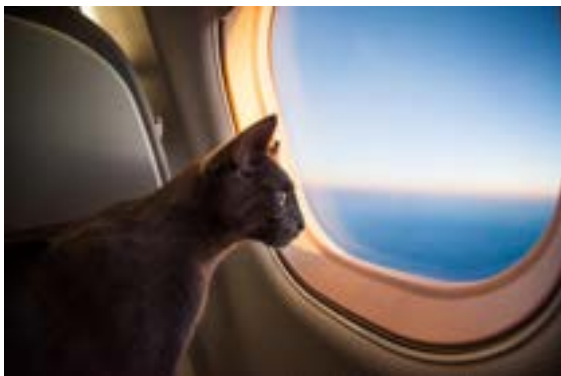
TRAVEL PHOTOGRAPHER

FOR AN UNFORGETTABLE TOUR
FOREVER



Certain journeys hold a unique significance: a honeymoon, a wedding anniversary marked by the renewal of vows, or cherished moments spent with close friends or family. Such beautiful occasions will be immortalized through professional photography and videography. Should you wish to incorporate this option into your upcoming trip, we are pleased to provide assistance with photographers who can transform your experience into a lasting memory.

TRAVELING WITH PETS

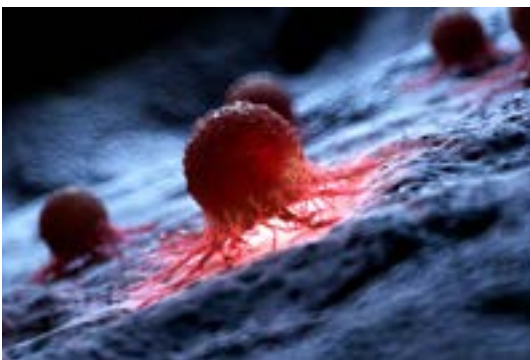


Do you wish to travel but are uncertain about who to entrust your four-legged companion to? Why not bring him or her along for the adventure? After all, he or she is an essential member of your family. We also arrange customized trips for this specific situation

SERVICES OFFERED

- **TRANSPORT**
- **ACCOMMODATION**
- **PET SITTING SERVICE**
- **TRAVEL INSURANCE FOR ANIMALS**





OUR COMMITMENT TO ENVIRONMENTAL PROTECTION AND CANCER RESEARCH

THROUGH OUR TRIPS, WE AIM TO PROVIDE OUR CUSTOMERS WITH THE OPPORTUNITY TO **SUPPORT** NON-PROFIT ORGANIZATIONS DEDICATED TO ADDRESSING THE FOLLOWING GLOBAL CHALLENGES.

- **CONSERVATION OF PLANT AND ANIMAL LIFE**
- **GLOBAL WARMING**
- **CANCER RESEARCH**



MODEL ITINERARIES

**OUR ITINERARIES TO
INSPIRE YOU AND TO CRAFT
AN ADVENTURE BEYOND
THE COMMON PATHS OF
MASS TOURISM**



REFERENCE CODE
ATT ICELAND

ICELAND GRAND TOUR

EXPERIENCE THE FINEST OFFERINGS OF THIS COUNTRY THROUGH AN IDEAL BLEND OF NATURE EXCURSIONS AND DEEP ENGAGEMENTS WITH ICELANDIC CULTURE AND HISTORY, ALL SET AGAINST THE ISLAND'S MOST BREATHTAKING LANDSCAPES

An extraordinary adventure in relatively uncharted territories awaits. Immerse yourself in the grandeur and untamed beauty of Icelandic nature, captivated by stunning landscapes while uncovering the unique history and culture of this intriguing land. You will have the chance to explore some of the most secluded regions of the country, all while experiencing its most iconic attractions

CUSTOMIZABLE ITINERARY FOR THE FOLLOWING CATEGORIES OF TRAVELERS



DISABLED



- HONEYMOONS
- ANNIVERSARIES



OVER 65



- GROUPS
- FAMILIES



- SCHOOLS
- UNIVERSITY
- CULTURAL INSTITUTIONS

IMPORTANT DETAILS



- REYKJAVIK



- CAR
- VAN
- COACH
- MOTORHOME
- MOTORCYCLE



16 DAYS OR MORE





ITINERARY

DAYS 1, 2 & 3 - REYKJAVIK, BLUE LAGOON AND ÞRÍHNÚKAGÍGUR - ICELAND

EMBARK ON YOUR EXTRAORDINARY ADVENTURE IN REYKJAVIK, THE RADIANT CAPITAL OF THIS CAPTIVATING ISLAND! SEIZE THE OPPORTUNITY TO VISIT THE ICONIC HALLGRÍMSKIRKJA, A LUTHERAN CHURCH DISTINGUISHED BY ITS MODERNIST ARCHITECTURE AND ITS TOWERING 74.5-METER BELL TOWER, FROM WHICH YOU CAN ENJOY BREATHTAKING VIEWS OF THE CITY. NAMED AFTER THE ICELANDIC POET HALLGRÍMUR PÉTURSSON, THIS ARCHITECTURAL MARVEL FEATURES A STUNNING INTERIOR COMPLETE WITH A GRAND PIPE ORGAN AND EXQUISITE STAINED GLASS WINDOWS THAT WILL LEAVE YOU IN AWE. BE SURE TO VISIT PERLAN, REYKJAVIK'S PREMIER ATTRACTION; IT IS AN ICONIC STRUCTURE AND AN EDUCATIONAL HUB WHERE VISITORS CAN EXPLORE ICELANDIC NATURE THROUGH THE LENSES OF SCIENCE AND HUMAN PERCEPTION. AT PERLAN, GUESTS CAN DISCOVER ICELAND'S RARE AND REMARKABLE NATURAL WONDERS THROUGH A SERIES OF EXHIBITIONS AND PRESENTATIONS. STATE-OF-THE-ART TECHNOLOGY AND INTERACTIVE EXPERIENCES, COMBINED WITH ENGAGING NARRATIVES, RENDER THE EXHIBITIONS BOTH ENJOYABLE AND INFORMATIVE. PERLAN ALSO HOUSES THE WORLD'S FIRST INDOOR ICE CAVE, MEASURING 100 METERS IN LENGTH AND CONSTRUCTED FROM OVER 350 TONS OF SNOW, OFFERING A SPECTACULAR INTERACTIVE EXHIBITION THAT PROVIDES INSIGHTS INTO ICELAND'S GLACIERS AND EXTRAORDINARY GEOLOGICAL PHENOMENA. IN THE FORCES OF NATURE EXHIBITION, VISITORS CAN EXPERIENCE THE MIGHT OF VOLCANOES, EARTHQUAKES, AND GEOTHERMAL ENERGY. STROLL ALONG LAUGAVEGUR, THE VIBRANT SHOPPING STREET, WHERE YOU WILL ENCOUNTER AN EXCEPTIONAL BLEND OF LOCAL BOUTIQUES, INTERNATIONAL BRANDS, AND ART GALLERIES—A TRUE VISUAL DELIGHT FOR BOTH LOCALS AND TOURISTS! TAKE A MOMENT TO RELAX AT KAFFITÁR FOR A COFFEE BREAK AND IMMERSE YOURSELF IN THE LOCAL AMBIANCE. THEN, ADMIRE THE STUNNING HARPA CONCERT HALL, AN ARCHITECTURAL MASTERPIECE THAT OPENED IN 2011. ITS GLASS FAÇADE BEAUTIFULLY REFLECTS THE SURROUNDING LANDSCAPE AND OCEAN. THIS VENUE SERVES AS THE CULTURAL HEARTBEAT OF ICELAND, HOSTING UNMISSABLE CONCERTS AND CULTURAL EVENTS! CONCLUDE YOUR DAY WITH DINNER AT SÆGREIFINN (THE SEA BARON), RENOWNED FOR ITS DELECTABLE SEAFOOD—BE SURE TO TRY THEIR BELOVED LOBSTER SOUP! FOR A TASTE OF REYKJAVIK'S VIBRANT NIGHTLIFE, VISIT KAFFIBARINN OR LEBOWSKI BAR FOR LIVE MUSIC AND A LIVELY ATMOSPHERE. ON DAY TWO, IMMERSE YOURSELF IN ICELAND'S RICH HISTORY AT THE NATIONAL MUSEUM! HERE, YOU WILL EMBARK ON A JOURNEY THROUGH THE CENTURIES, EXPLORING THE ISLAND'S CULTURAL HERITAGE THROUGH CAPTIVATING EXHIBITIONS THAT SPAN FROM VIKING TIMES TO THE PRESENT DAY. CONTINUE TO THE REYKJAVIK ART MUSEUM, THE COUNTRY'S LARGEST ART INSTITUTION, COMPRISING THREE BUILDINGS—HAFNARHÚS, KJARVALSSTAÐIR, AND ÁSMUNDARSAFN—EACH SHOWCASING STUNNING DISPLAYS OF CONTEMPORARY AND MODERN ART FROM ICELAND AND BEYOND. ENJOY LUNCH AT HLEMMUR MATHÖLL: THIS DINING HALL IS A TRUE GASTRONOMIC HAVEN WHERE YOU CAN SAVOR TRADITIONAL ICELANDIC DISHES ALONGSIDE INTERNATIONAL DELICACIES IN A VIBRANT ATMOSPHERE. UNWIND AT THE BLUE LAGOON, A LEGENDARY GEOTHERMAL SPA CELEBRATED FOR ITS MILKY BLUE WATERS RICH IN MINERALS SUCH AS SILICA AND SULFUR. SET AMIDST A UNIQUE LAVA LANDSCAPE, IT OFFERS UNFORGETTABLE SPA TREATMENTS, INCLUDING SAUNAS AND STEAM BATHS—IT IS AN EXPERIENCE NOT TO BE MISSED! CONCLUDE YOUR DAY WITH AN EXQUISITE DINNER AT DILL, A MICHELIN-STARRED RESTAURANT FEATURING AN EXCLUSIVE TASTING MENU CRAFTED FROM FRESH LOCAL INGREDIENTS. START DAY THREE WITH A VISIT TO ÞRÍHNÚKAGÍGUR, THE ONLY LOCATION IN THE WORLD WHERE YOU CAN DESCEND INTO A DORMANT VOLCANO AND SAFELY EXPLORE ITS EXTRAORDINARY LAVA CHAMBER. THIS IS AN EXPERIENCE NOT TO BE OVERLOOKED! TO PARTAKE IN THIS WONDER, ALL YOU NEED IS THE WILLINGNESS TO UNDERTAKE A MODERATE HIKE AND THE COURAGE TO ABSEIL 120 METERS / 400 FEET INTO THE VOLCANO VIA AN OPEN CABLE CAR. THE HIKE IS AN INTEGRAL PART OF THE TOUR, NOT ONLY FOR THE STUNNING VIEWS BUT ALSO BECAUSE IT IS ONE OF ONLY TWO WAYS TO REACH THE BASE OF THE VOLCANO. THE ALTERNATIVE? AN EXHILARATING HELICOPTER FLIGHT! ONCE BACK ON THE SURFACE, YOU WILL HAVE THE OPPORTUNITY TO ENJOY A TRADITIONAL ICELANDIC LAMB SOUP OR A DELICIOUS VEGETARIAN/VEGAN ALTERNATIVE, ACCOMPANIED BY COFFEE, TEA, AND HOT CHOCOLATE AT THE BASE CAMP. DO NOT MISS THIS UNIQUE OPPORTUNITY!



ITINERARY

DAYS 4, 5 & 6 - BORGARNES, BÚÐIR, ARNARSTAPI, HELLNAR, STYKKISHÓLMUR AND FLATEY - ICELAND

DEPART FROM REYKJAVIK AND JOURNEY WESTWARD FOR AN UNFORGETTABLE ADVENTURE! BE SURE TO VISIT THE RENOWNED SETTLEMENT CENTRE IN BORGARNES, WHERE YOU CAN EXPLORE THE HISTORY OF ICELAND'S SETTLEMENT IN THE 9TH CENTURY. DISCOVER THE REMARKABLE EGIL'S SAGA EXHIBITION, WHICH NARRATES THE TALE OF EGILL SKALLAGRÍMSSON, THE SON OF ONE OF ICELAND'S EARLY SETTLERS, SKALLAGRÍMUR KVELDÚLFSSON, A VALIANT NORWEGIAN VIKING. PROCEED TO THE ENCHANTING SNÆFELLSNES PENINSULA AND MARVEL AT ITS NATURAL WONDERS! ALONG THE ROUTE, YOU WILL ENCOUNTER BREATHTAKING VOLCANIC CRATERS, WITH ELDBORG BEING THE LARGEST AND MOST STUNNING. REMEMBER TO STOP AT BÚÐIR, A PICTURESQUE SITE NESTLED IN A SCENIC NATURAL COVE. CONTINUING ALONG THE SOUTH COAST, ARRIVE AT ARNARSTAPI, A CHARMING FISHING VILLAGE SITUATED AT THE BASE OF STAPAFELL MOUNTAIN, WHERE SMALL FISHING BOATS DELIVER THEIR FRESH CATCH DAILY. ALTHOUGH MODEST TODAY, ARNARSTAPI WAS A SIGNIFICANT TRADING POST IN CENTURIES PAST DUE TO ITS HARBOR! A STROLL ALONG THE CLIFFS PROVIDES SPECTACULAR VIEWS OF THE COASTAL LANDSCAPES AND EXTRAORDINARY ROCK FORMATIONS; DO NOT MISS THE SIGHT OF THE MAJESTIC SNÆFELLSJÖKULL GLACIER, WHICH ALSO SERVES AS A VOLCANO - THIS IS WHERE THE ADVENTUROUS JOURNEY DEPICTED BY THE RENOWNED AUTHOR JULES VERNE IN HIS NOVEL "JOURNEY TO THE CENTRE OF THE EARTH" COMMENCED! CONTINUE TO HELLNAR, AN ANCIENT FARMING AND FISHING COMMUNITY SET IN A PICTURESQUE LANDSCAPE. HERE, YOU CAN ADMIRE A QUAIN FISHING HARBOR OVERLOOKING A LAVA CLIFF. ALONG THE BEACH BELOW, THE WAVES HAVE SCULPTED THE IMPRESSIVE VAULTED CAVE BÆÐSTOFUHELLIR, WHICH ILLUMINATES WITH A BEAUTIFUL BLUE LIGHT ON SUNNY DAYS. THE COAST IS ADORNED WITH REMARKABLE BLACK ROCK FORMATIONS AND TOWERING CLIFFS. KITTIWAKES AND FULMARS NEST HERE IN ABUNDANCE - A TRUE HAVEN FOR NATURE ENTHUSIASTS! PROCEED TO STYKKISHÓLMUR, WHICH WELCOMES YOU WITH ITS UNIQUE CHARM: LOCATED AT THE TIP OF THORSNES HEADLAND, IT IS THE OLDEST TOWN ON THE SNÆFELLSNES PENINSULA AND SERVES AS THE COMMERCIAL CENTER OF THE REGION. WITH ITS EXCELLENT SEABED AND BURGEONING TOURISM, STYKKISHÓLMUR HAS BECOME A FAVORED DESTINATION FOR FISHING AFICIONADOS! THE TOWN IS CELEBRATED FOR ITS ICELANDIC SCALLOPS - A TRUE DELICACY - AND IS THE BIRTHPLACE OF A SCALLOP-CATCHING FLEET. THE VIBRANT HISTORIC HOUSES CREATE A DELIGHTFUL ATMOSPHERE AS THEY LEAD YOU TO THE PICTURESQUE HARBOR SHELTERED BY A NEARBY ISLAND. FROM STYKKISHÓLMUR, YOU CAN EMBARK ON THRILLING BOAT TRIPS ACROSS BREIÐAFJÖRÐUR BAY: EXPLORE THE INNER ISLANDS OF THE ARCHIPELAGO DAILY DURING THE SUMMER! STYKKISHÓLMUR IS ALSO THE DEPARTURE POINT FOR THE BALDUR FERRY, WHICH CONNECTS TO FLATEY ISLAND. BE SURE TO VISIT THE INTRIGUING ELDFJALLASAFNID VOLCANO MUSEUM, WHERE YOU CAN VIEW ARTIFACTS AND LAVA SAMPLES ALONGSIDE EXTRAORDINARY WORKS OF ART. FOUNDED BY THE ESTEEMED VOLCANOLOGIST HARALDUR SIGURÐSSON IN AN OLD CINEMA NEAR THE HARBOR.

DAY 7 - ÍSAFJÖRÐUR AND VIGUR ICELAND - ICELAND

BEGIN YOUR DAY WITH A SUBSTANTIAL BREAKFAST AT A QUAIN CAFÉ IN ÍSAFJÖRÐUR. SAVOR THE LOCAL PASTRIES ALONGSIDE A ROBUST CUP OF COFFEE TO ENERGIZE YOUR ADVENTURE! FOLLOWING BREAKFAST, TAKE A STROLL THROUGH THE TOWN. BE SURE TO ADMIRE THE DELIGHTFUL OLD HOUSES AND THE PICTURESQUE HARBOR. THE VISTAS OF THE SURROUNDING MOUNTAINS ARE TRULY AWE-INSPIRING! EMBARK ON A BOAT TRIP TO VIGUR ISLAND. THIS SMALL, UNINHABITED ISLE SERVES AS A HAVEN FOR BIRDBWATCHERS, PARTICULARLY DURING THE SUMMER MONTHS WHEN PUFFINS AND OTHER SEABIRDS NEST HERE. DEDICATE SOME TIME TO EXPLORING THE ISLAND'S DISTINCTIVE FLORA AND FAUNA. YOU MAY ALSO VISIT THE HISTORIC WINDMILL AND THE CHARMING RESIDENCE OF THE ISLAND'S CARETAKER. AFTER YOUR ISLAND EXPLORATION, RETURN TO ÍSAFJÖRÐUR. EXPLORE THE WESTFJORDS HERITAGE MUSEUM TO GAIN INSIGHTS INTO THE CULTURAL HISTORY AND HERITAGE OF THE WESTFJORDS REGION, FEATURING EXHIBITS ON FISHING, AGRICULTURE, AND LOCAL TRADITIONS.



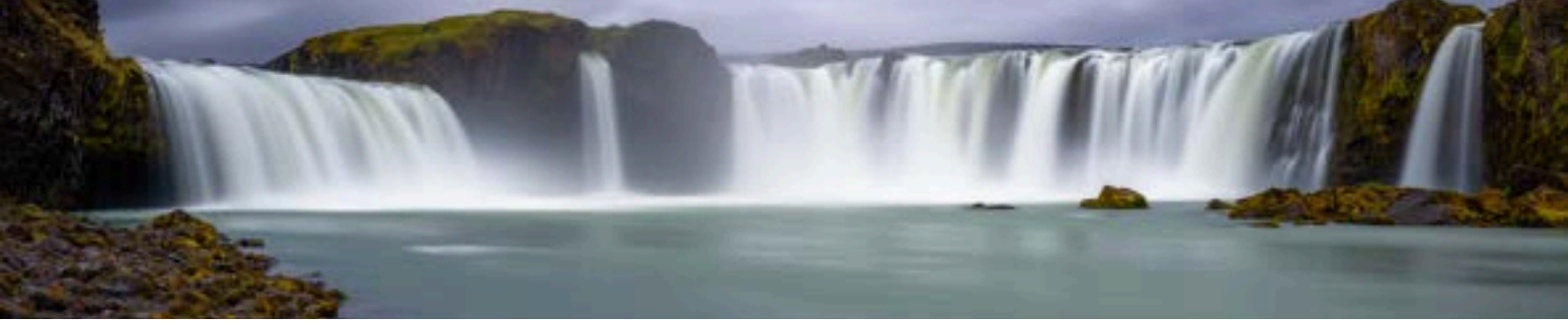
ITINERARY

DAY 8 - HVAMMSTANGI, GLAUMBÆR, HÓLAR AND HOFÓS - ICELAND

EMBARK ON A JOURNEY TO THE DISTINCTIVE SKAGAFJÖRÐUR VALLEY, RENOWNED FOR ITS HORSE BREEDING! SEIZE THE OPPORTUNITY TO VISIT THE ICELANDIC SEAL CENTER IN HVAMMSTANGI, AN INTRIGUING RESEARCH FACILITY AND EXHIBITION DEDICATED TO THE SEALS INHABITING ICELANDIC WATERS. HERE, YOU CAN PARTAKE IN A REMARKABLE EXPERIENCE: TRAVERSE THE VATNSNES PENINSULA AND OBSERVE BOTH HARBOR SEALS AND THE MAJESTIC GREY SEALS IN THEIR NATURAL ENVIRONMENT. PROCEED THROUGH THE VATNSSKARÐ PASS TO THE PICTURESQUE DISTRICT OF SKAGAFJÖRÐUR. IN THE HEART OF SKAGAFJÖRÐUR, EXHILARATING HORSEBACK RIDING TOURS AWAIT, CATERING TO BOTH NOVICES AND SEASONED RIDERS! MOREOVER, YOU CAN ALSO EXPERIENCE SOME OF THE FINEST WHITE-WATER RAFTING IN ICELAND! AT THE GLAUMBÆR FOLK MUSEUM, IMMERSE YOURSELF IN RURAL LIFE DURING THE 18TH AND 19TH CENTURIES IN ICELAND. THE FARM STRUCTURES FROM THIS ERA EXEMPLIFY THE REGION'S EARLIEST WOODEN HOUSES. IT IS BELIEVED THAT A FARM CONSTRUCTED OF PEAT, STONE, AND TIMBER EXISTED WHEN ICELAND WAS FIRST SETTLED OVER 1,100 YEARS AGO, AND VIKING RUINS HAVE BEEN DISCOVERED IN GLAUMBÆR! BE SURE TO VISIT HÓLAR, A CAPTIVATING HISTORICAL SITE, AND HOFÓS, WITH ITS CHARMING OLD BUILDINGS AND EMIGRATION CENTRE.

DAY 9 - AKUREYRI - ICELAND

BEGIN YOUR AKUREYRI ADVENTURE WITH BREAKFAST AT KAFFI ILMUR, WHERE YOU CAN SAVOR THEIR DELECTABLE PASTRIES ALONGSIDE A ROBUST CUP OF COFFEE TO ENERGIZE YOUR DAY. DO NOT MISS THE CHANCE TO EXPLORE THE AKUREYRI BOTANICAL GARDENS, A REMARKABLE SITE FEATURING OVER 7,000 PLANT SPECIES FROM AROUND THE GLOBE. ESTABLISHED IN 1912, THE GARDENS PROVIDE PICTURESQUE TRAILS AND INFORMATIVE DISPLAYS, IDEAL FOR A LEISURELY WALK IN NATURE. FOR LUNCH, VISIT AKUREYRI FISH & CHIPS, WHERE THE FRESH FISH AND CRISPY CHIPS ARE ESSENTIAL, BEST ENJOYED WITH A VIEW OF THE MARINA. CONTINUE YOUR JOURNEY AT THE AKUREYRI ART MUSEUM, WHERE CONTEMPORARY AND MODERN ART CONVERGE IN AN UNMISSABLE CULTURAL EXPERIENCE. WITH ENGAGING EXHIBITIONS AND INSPIRING EVENTS, IT SERVES AS A PERFECT VENUE FOR ART ENTHUSIASTS AND THE LOCAL COMMUNITY. BE SURE TO PARTICIPATE IN AN EXHILARATING WHALE WATCHING TOUR, AS AKUREYRI IS AN EXCELLENT BASE FOR OBSERVING HUMPBACK WHALES, ORCAS, AND EVEN THE MAGNIFICENT BLUE WHALE. AFTER A THRILLING DAY, INDULGE IN AN UNFORGETTABLE DINNER AT STRIKIÐ, WHERE YOU CAN RELISH TRADITIONAL ICELANDIC CUISINE WHILE TAKING IN BREATHTAKING VIEWS OF THE FJORD. TO UNWIND FURTHER, CONSIDER A DIP IN THE WARM WATERS OF AKUREYRI'S SWIMMING POOL, A BELOVED RETREAT FOR LOCALS AND AN IDEAL WAY TO CONCLUDE A BUSY DAY.



ITINERARY

DAY 10 - LAKE MÝVATN, GODAFOSS WATERFALL, DIMMUBORGIR, NÁMASKARÐ, SKÚTUSTAÐAGÍGAR AND KRAFLA - ICELAND

EMBARK ON AN UNFORGETTABLE JOURNEY FROM THE AKUREYRI REGION TO THE BREATHTAKING LAKE MÝVATN! PAUSE AT THE MAGNIFICENT GODAFOSS WATERFALL, A TRUE MARVEL OF NATURE. DEDICATE THE DAY TO EXPLORING THE NATURAL WONDERS THAT ENVELOP LAKE MÝVATN, RENOWNED GLOBALLY FOR ITS REMARKABLE DIVERSITY OF AVIAN LIFE AND THE NUMEROUS DUCK SPECIES THAT NEST HERE DURING THE SUMMER MONTHS. UNCOVER ASTONISHING GEOLOGICAL FORMATIONS AND AWE-INSPIRING LANDSCAPES! BE SURE TO EXPERIENCE THE HIGHLIGHTS OF THE AREA: THE INTRIGUING LAVA FORMATIONS OF DIMMUBORGIR, THE GEOTHERMAL REGION OF NÁMASKARÐ, THE STRIKING PSEUDO CRATERS OF SKÚTUSTAÐAGÍGAR, THE NATURAL BATHS, AND THE KRAFLA VOLCANO.

DAY 11 - HÚSAVÍK - ICELAND

CONTINUE TO HÚSAVÍK AND EXPLORE THE HÚSAVÍK WHALE MUSEUM, DEDICATED TO THE STUDY AND CONSERVATION OF WHALES AND THEIR HABITATS. THE MUSEUM FEATURES INFORMATIVE EXHIBITS ON VARIOUS WHALE SPECIES, THEIR BIOLOGY, AND THE HISTORY OF WHALING IN ICELAND. ITS MISSION IS TO EDUCATE VISITORS ABOUT MARINE LIFE AND PROMOTE AWARENESS OF OCEAN CONSERVATION. HÚSAVÍK IS RENOWNED AS THE WHALE WATCHING CAPITAL OF ICELAND! JOIN A WHALE WATCHING TOUR FOR AN EXCELLENT OPPORTUNITY TO OBSERVE VARIOUS WHALE SPECIES, ENSURING AN UNFORGETTABLE EXPERIENCE. ENJOY LUNCH AT GAMLI BAUKUR, A CHARMING RESTAURANT THAT OFFERS A DIVERSE SELECTION OF LOCAL DISHES ALONGSIDE A PICTURESQUE VIEW OF THE HARBOR. SPEND SOME TIME WANDERING THROUGH HÚSAVÍK, ADMIRING THE QUANT WOODEN HOUSES, VISITING LOCAL SHOPS, AND PERHAPS STOPPING BY THE CHURCH, WHICH IS HOUSED IN A CHARMING WOODEN STRUCTURE AND IS CELEBRATED FOR ITS STRIKING ARCHITECTURE. BUILT IN 1907, IT FEATURES A BEAUTIFUL INTERIOR WITH STAINED GLASS WINDOWS, PROVIDING A SERENE ATMOSPHERE FOR BOTH VISITORS AND LOCALS. FOR DINNER, HEAD TO NAUSTIÐ, A RESTAURANT KNOWN FOR ITS COZY AMBIANCE AND DELECTABLE SEAFOOD. FINALLY, TAKE A LEISURELY STROLL ALONG THE WATERFRONT.

DAY 12 - ÁSBYRGÍ CANYON, FJÖLLUM, DETTIFOSS WATERFALL, EGILSSTAÐIR, HALLORMSSTAÐASKÓGUR AND SEYÐISFJÖRÐUR - ICELAND

BEGIN YOUR JOURNEY IN HÚSAVÍK AND PROCEED NORTHWARD, TRAVERSING THE STUNNING BAY OF ÖXARFJÖRÐUR TO REACH THE ÁSBYRGÍ CANYON, AN EXTRAORDINARY HORSESHOE-SHAPED FORMATION THAT IS A MUST-SEE. FOLLOWING THIS, DELVE INTO VESTURDALUR AND HLJÓÐAKLETTAR, THE MAGNIFICENT ROCKS, A CAPTIVATING CANYON SCULPTED BY THE JÖKULSÁ Á FJÖLLUM RIVER. THIS REGION IS A VERITABLE HAVEN FOR HIKERS, FEATURING INTRIGUING TRAILS THAT LEAD TO THE MARVELS OF JÖKULSÁRGLJÚFUR NATIONAL PARK. CONTINUE SOUTHWARD TO THE AWE-INSPIRING DETTIFOSS, THE MOST REMARKABLE WATERFALL IN EUROPE. FROM THERE, JOURNEY ACROSS THE PLATEAU TO EGILSSTAÐIR, THE LARGEST TOWN IN EASTERN ICELAND. CLOSE TO EGILSSTAÐIR LIES HALLORMSSTAÐASKÓGUR, THE COUNTRY'S LARGEST FOREST, ALONGSIDE THE LEGENDARY LAGARFLJÓT RIVER. SEIZE THE CHANCE TO EMBARK ON A BRIEF YET SCENIC DRIVE TO SEYÐISFJÖRÐUR, A CHARMING FISHING TOWN AND FERRY PORT THAT IS UNDOUBTEDLY WORTH A VISIT.



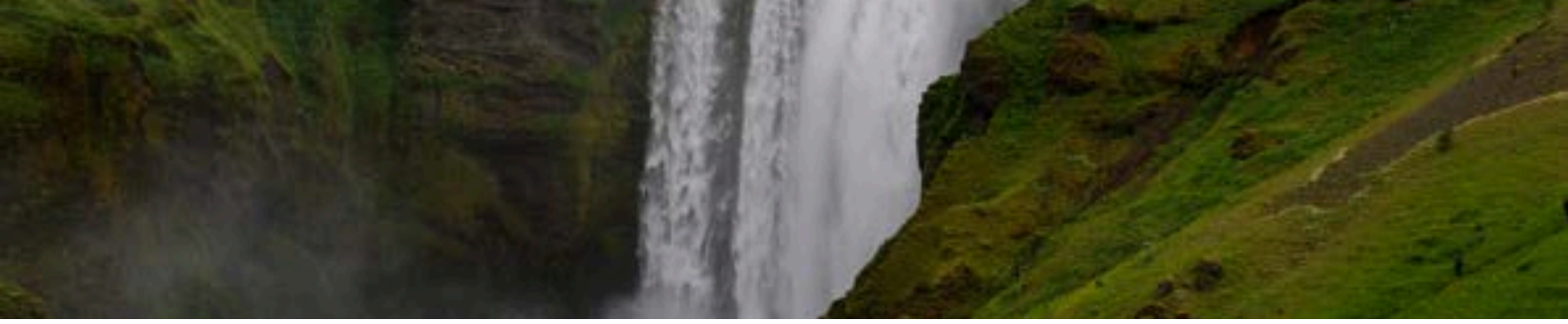
ITINERARY

DAY 13 - STÖÐVARFJÖRÐUR, ALMANNASKARÐ, JÖKULSÁRLÓN, VATNAJÖKULL, SKAFTAFELL, SVARTIFOSS WATERFALL, VÍK, FJAÐRÁRGLJÚFUR CANYON AND KIRKJUBÆJARKLAUSTUR - ICELAND

TRAVERSE THE STUNNING EAST FJORDS, EACH DISTINCT IN ITS OWN RIGHT. EXPLORE THE STONE COLLECTION AT STÖÐVARFJÖRÐUR TO WITNESS THE REMARKABLE GEMS GATHERED FROM THIS REGION. PROCEED SOUTH PAST LÓNSÖRÆFI AND ASCEND THE ALMANNASKARÐ PASS FOR BREATHTAKING VISTAS OF THE SURROUNDING LANDSCAPE. NAVIGATE THROUGH A TUNNEL TO HÖFN, A VIBRANT FISHING COMMUNITY SITUATED AT THE BASE OF VATNAJÖKULL, EUROPE'S LARGEST GLACIER. HÖFN IS RENOWNED FOR ITS FRESH SEAFOOD, PARTICULARLY LOBSTERS; THE SCENERY HERE IS TRULY AWE-INSPIRING. BE SURE TO VISIT THE RENOWNED JÖKULSÁRLÓN GLACIER LAGOON, ONE OF ICELAND'S MOST EXTRAORDINARY NATURAL ATTRACTIONS. HERE, YOU CAN OBSERVE MASSIVE ICEBERGS THAT HAVE CALVED FROM THE GLACIER DUE TO CLIMATE CHANGE WHILE ENJOYING AN EXHILARATING BOAT TOUR AMONG THESE FLOATING GIANTS. IF YOU TIME YOUR VISIT WELL, YOU MAY EVEN CATCH A GLIMPSE OF SEALS. ADDITIONALLY, STOP AT DIAMOND BEACH AND CONTINUE ALONG THE SOUTHERN COAST TO VATNAJÖKULL NATIONAL PARK. UPON REACHING THE VATNAJÖKULL AREA, DO NOT OVERLOOK SKAFTAFELL NATIONAL PARK, WHICH OFFERS STUNNING VIEWS AND NUMEROUS HIKING TRAILS LEADING TO THE MAGNIFICENT SVARTIFOSS WATERFALL. FINALLY, MAKE YOUR WAY TO VÍK, TAKING THE OPPORTUNITY TO ADMIRE THE FJAÐRÁRGLJÚFUR CANYON AND VISIT THE QUIANT VILLAGE OF KIRKJUBÆJARKLAUSTUR.

DAY 14 - KIRKJUBÆJARKLAUSTUR, SYSTRAFOSS WATERFALL AND LAKAGÍGAR - ICELAND

KIRKJUBÆJARKLAUSTUR DERIVES ITS NAME FROM THE HISTORIC NUNNERY KNOWN AS KIRKJUBÆJAR ABBEY, WHICH FUNCTIONED IN THIS LOCATION FOR OVER 350 YEARS PRIOR TO THE REFORMATION IN 1550. NEARBY, ONE CAN FIND THE PICTURESQUE SYSTRAFOSS WATERFALL, OR "SISTERS' WATERFALL," DEDICATED TO THE NUNS OF THE ABBEY; IT IS SITUATED ABOVE KIRKJUBÆJARKLAUSTUR ALONG THE RIVER DESCENDING FROM THE MOUNTAIN. AN INTRIGUING HIKING TRAIL LEADS TO THE SUMMIT OF THE MOUNTAIN, OFFERING BREATHTAKING VISTAS. ADDITIONALLY, ACCESS TO THE LAKI (LAKAGÍGAR) CRATERS IS AVAILABLE A SHORT DISTANCE AWAY, NESTLED WITHIN THE SKAFTÁRELDHAURAUN LAVA FIELD FORMED BY THE CATASTROPHIC VOLCANIC ERUPTION OF 1783-1784, AN EVENT THAT HAD DIRE REPERCUSSIONS FOR THE SURROUNDING ENVIRONMENT. DO NOT MISS THE KIRKJUGÓLF / KIRKJUGÓLFID, A FORMATION OF HEXAGONAL BASALT COLUMNS VISIBLE ON THE EARTH'S SURFACE THAT RESEMBLE A NATURAL TILED FLOOR. THIS AREA SPANS APPROXIMATELY 80 SQUARE METERS AND HAS BEEN SHAPED BY GLACIAL AND MARINE EROSION; PRIOR TO THE CONCLUSION OF THE LAST ICE AGE, IT WAS PART OF THE OCEAN FLOOR.



ITINERARY

DAY 15 - SKÓGAFOSS WATERFALL, SKÓGAR, REYNISFJARA, SELJALANDSFOSS WATERFALL, KERID, FAXI WATERFALL AND GEYSIR - ICELAND

EMBARK ON AN UNFORGETTABLE JOURNEY TO REYNISDRANGAR, WHERE THE DRAMATIC COASTLINE AND CAPTIVATING ROCK FORMATIONS WILL LEAVE YOU IN AWE. DISCOVER THE MAGNIFICENT DYRHÓLAEY HEADLAND, A VAST NATURAL ARCH SCULPTED BY THE RELENTLESS FORCES OF WIND AND WAVES, SERVING AS A SANCTUARY FOR DIVERSE BIRDLIFE DURING THE SUMMER MONTHS. PROCEED WESTWARD TO THE BREATHTAKING SKÓGAFOSS WATERFALL, ONE OF ICELAND'S TREASURES, STANDING 60 METERS HIGH AND 25 METERS WIDE. ADMIRE THE STUNNING VISTA AS THE WATER CASCADES OVER THE CLIFFS OF THE ANCIENT COASTLINE, CREATING MAGNIFICENT RAINBOWS ON SUNNY DAYS. THIS MARVEL IS EASILY ACCESSIBLE AND A MUST-VISIT FOR TOURISTS AND PHOTOGRAPHERS ALIKE. BE SURE TO EXPLORE THE SKÓGAR FOLK MUSEUM, WHICH NARRATES THE REGION'S HISTORY AND CULTURE THROUGH AN INTRIGUING COLLECTION OF ARTIFACTS, INCLUDING TRADITIONAL ICELANDIC HOUSES, TOOLS, AND AGRICULTURAL EQUIPMENT. THE MUSEUM ALSO SHOWCASES EXHIBITS ON LOCAL WILDLIFE AND THE SURROUNDING NATURAL ENVIRONMENT. FOLLOWING THIS CULTURAL EXPERIENCE, PROCEED TO REYNISFJARA, A STRIKING BLACK SAND BEACH RENOWNED FOR ITS DRAMATIC BASALT COLUMNS AND CRASHING ATLANTIC WAVES; HERE YOU WILL ENCOUNTER A TRULY UNIQUE COASTAL EXPERIENCE. YOUR NEXT DESTINATION WILL BE SELJALANDSFOSS WATERFALL: IN SUMMER, YOU CAN TRAVERSE A PATH BEHIND ITS POWERFUL CASCADE—A GENUINELY EXCLUSIVE EXPERIENCE! CONTINUE ALONG THE PICTURESQUE SOUTH COAST UNTIL YOU REACH THE GOLDEN CIRCLE, WITH STOPS AT KERID CRATER AND FAXI WATERFALL BEFORE ARRIVING AT THE GEYSIR GEOTHERMAL AREA.

DAY 16 - GEYSIR, GULLFOSS WATERFALL, PINGVELLIR AND REYKJAVIK - ICELAND

PREPARE TO WITNESS THE RENOWNED GREAT GEYSIR ALONGSIDE THE VIBRANT STROKKUR, WHICH ERUPTS EVERY FEW MINUTES AMIDST NUMEROUS HOT SPRINGS. FROM GEYSIR, PROCEED A SHORT DISTANCE TO THE MAGNIFICENT GULLFOSS WATERFALL, ONE OF THE LARGEST AND MOST STUNNING WATERFALLS IN ICELAND. SUBSEQUENTLY, VISIT PINGVELLIR NATIONAL PARK, A UNESCO WORLD HERITAGE SITE, WHERE YOU CAN OBSERVE THE FAULT LINES FORMED BY THE FRACTURING OF THE EARTH'S CRUST. PINGVELLIR IS AMONG THE COUNTRY'S MOST SIGNIFICANT HISTORICAL SITES AND BOASTS BREATHTAKING BEAUTY. THE SILFRA FISSURE, ONE OF THE PARK'S BEST-KEPT SECRETS, ALONG WITH THE SITE OF THE WORLD'S OLDEST PARLIAMENT, PRESENTS AN OTHERWORLDLY LANDSCAPE. THE CRYSTAL-CLEAR WATERS OF THE DEEP FISSURE WILL MAKE YOU FEEL WEIGHTLESS AS YOU GENTLY DIVE WITH THE CURRENT. FREQUENTLY RANKED AMONG THE TOP TEN DIVE SITES GLOBALLY, SILFRA OFFERS UNDERWATER VISIBILITY OF UP TO 100 METERS AND IS SITUATED RIGHT ON THE BOUNDARY BETWEEN EUROPE AND AMERICA. AFTER EXPLORING THE NATIONAL PARK, RETURN TO REYKJAVIK AND ENJOY A WELL-DESERVED REST WHILE AWAITING YOUR FLIGHT HOME THE FOLLOWING DAY.



FESTIVALS, FAIRS, AND EVENTS

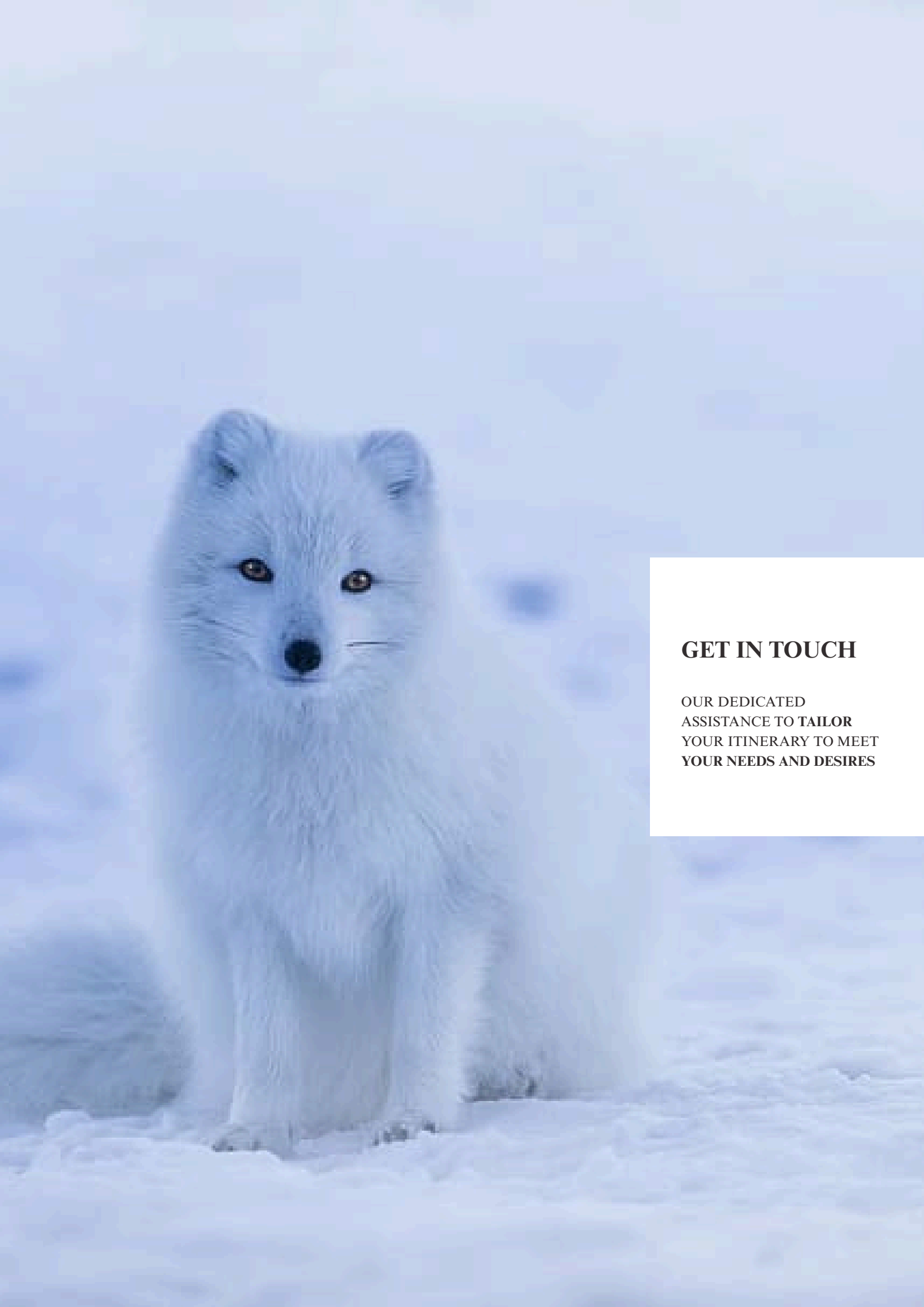
EXCEPTIONAL
OPPORTUNITIES TO ENGAGE
PROFOUNDLY WITH LOCAL
CULTURE & TRADITIONS.

UNMISSABLE EVENTS AND FESTIVALS IN ICELAND



- **PORRABLOT BETWEEN JANUARY AND FEBRUARY:** A TRADITIONAL VIKING FESTIVAL SHOWCASING DINNERS AND PERFORMANCES.
- **REYKJAVIK LIGHT FESTIVAL IN FEBRUARY:** AN EVENT THAT ILLUMINATES THE CITY WITH ARTISTIC INSTALLATIONS AND LIGHT DISPLAYS.
- **SUMMER SOLSTICE FESTIVAL IN JUNE:** AN EVENT DESIGNED TO ALIGN WITH THE SUMMER SOLSTICE AND THE ONSET OF THE MIDNIGHT SUN PHENOMENON.
- **REYKJAVIK ARTS FESTIVAL IN JUNE:** AN ANNUAL CELEBRATION OF VISUAL ARTS, MUSIC, THEATRE, AND DANCE THAT ATTRACTS ARTISTS AND VISITORS FROM ACROSS THE GLOBE.
- **ICELAND AIRWAVES IN NOVEMBER:** A MUSIC FESTIVAL SHOWCASING A DIVERSE ARRAY OF INTERNATIONAL AND LOCAL ARTISTS.

INFORMATION IN THE ITINERARIES AND EVENTS MAY CHANGE, SO PLEASE ENSURE YOU REMAIN INFORMED. ATLANTIC TRAVEL & TOURS CANNOT BE HELD LIABLE FOR ANY DECISIONS MADE BASED ON THIS INFORMATION



GET IN TOUCH

**OUR DEDICATED
ASSISTANCE TO TAILOR
YOUR ITINERARY TO MEET
YOUR NEEDS AND DESIRES**

SUPPORT INQUIRY



HONEYMOONS

FORM



ANNIVERSARIES

FORM



DISABLED INDIVIDUALS AND GROUPS

FORM



SENIORS INDIVIDUALS AND GROUPS

FORM



CULTURAL INDIVIDUALS AND GROUPS

FORM



INDIVIDUALS, COUPLES, FAMILIES, GROUPS

ATLANTIC CLASSIC BASIC

ATLANTIC TRAVELERS CLUB

STEPS TO JOIN

- IF YOU FALL INTO THE CATEGORY OF **SPECIAL TRAVELERS (HONEYMOONS, ANNIVERSARIES, DISABLED, SENIORS AND CULTURAL TRAVEL)**, PLEASE DO NOT HESITATE TO CLICK THE APPROPRIATE BUTTON, COMPLETE THE FORM, AND SUBMIT IT. YOU WILL RECEIVE ACCESS TO ENTIRELY **COMPLIMENTARY** SUPPORT.
- ON THE CONTRARY, IF YOU ARE **SINGLE, A COUPLE, A FAMILY, OR A GROUP** SEEKING ASSISTANCE, WE ENCOURAGE YOU TO **SELECT ONE OF THE TWO PAID OPTIONS: "ATLANTIC CLASSIC BASIC" OR "ATLANTIC TRAVELERS CLUB."**



ATLANTIC CLASSIC BASIC

It does not include any type of club or related benefits but only the classic tailor-made travel itinerary and quotation preparation service. In this case, to receive the above, you will have to proceed following the instructions indicated in the sub-heading "Steps to Follow".

QUOTATION FEE

- For US based customers \$15.00
- For UK based customers £15.00
- For EU based customers €15.00
- For Canada based customers Can\$ 25.00
- For Australia based customers AU\$ 28.00

If, after you have received our itinerary and tailor-made quotation, you decide not to proceed with the booking, the quotation fee is non-refundable but we will do everything possible to help you find the best travel solution.

STEPS TO FOLLOW

1) If you need to request a travel itinerary and quotation, click on the button below. Fill out and submit the relevant form.

[REQUEST A QUOTE](#)

2) Click on the image relating to your country of residence and you will be able to finalize the process of paying for the quote by credit/debit card via PayPal by following the various steps that will be indicated.



3) In a short time, you will receive your travel itinerary and quotation from one of the partner agencies, Atlantic Travel & Tours Booking Point Agency, located in the country where you live, to which you can also ask to modify / adjust your travel itinerary.



ATLANTIC TRAVELERS CLUB

A club open to all but mainly frequent travellers that opens the doors to the following benefits:

- Request unlimited itineraries and quotes without paying the Atlantic Classic Basic quote fee every time
- 20% discount always active for all inclusive travel
- Assistance before / during / after the travel
- Constant updates concerning the travel industry
- Discounts and gifts based on availability

MONTHLY MEMBERSHIP FEE

- For US based customers \$9.00
- For UK based customers £9.00
- For EU based customers €9.00
- For Canada based customers Can\$ 16.00
- For Australia based customers AU\$ 17.00

To join our Atlantic Travellers Club, follow the instructions indicated in the sub-heading "Steps to Follow".

You can cancel your membership at any time by writing to us by email.

STEPS TO FOLLOW

1) Click on this button and you will be able to access membership form to fill in and send.

MEMBERSHIP


2) Click on the image relating to your country of residence and you will be able to finalize the payment process of the monthly membership fee by credit/debit card via PayPal by following the various steps that will be indicated.



3) In a short time, you will receive welcome confirmation and you will be able to start enjoying the benefits described above.

4) Remember that you can request itineraries and quotes at any time by clicking on the button below. Fill out and submit the relevant form.

REQUEST A QUOTE



Atlantic Travel & Tours Ltd

**London, New York
Los Angeles, Miami
Denver**

ATLANTIC TRAVEL & TOURS LTD

REGISTERED OFFICES ADDRESSES

USA - DENVER - CO - 110 16TH STREET - SUITE 1460
80202

UK - LONDON - 167 - 169 GREAT PORTLAND STREET
W1W 5PE

E-MAIL

USA - unitedstatesadministration@atlantictourstravel.com

UK - unitedkingdomadministration@atlantictourstravel.com

WEBSITE

www.visitatlantictraveltours.com

PHONE

+44 078 5909 6824 - Phone & WhatsApp
+1 720 966 1434 - WhatsApp

WWW.VISITATLANTICTRAVELTOURS.COM