

ATLANTIC TRAVEL & TOURS

ATMOSPHERIC JOURNEYS ON
THE WATER

UNITED KINGDOM & IRELAND
INSPIRATIONAL BROCHURE

WWW.VISITATLANTICTRAVELTOURS.COM



FROM THE CHIEF EXECUTIVE OFFICER - FOUNDER

Dear travelers,

This collection was created for those who choose to travel on water **authentically, thoughtfully, and off the beaten path**. We've selected **sailing, catamaran, speedboat, motor yacht, and cruise** experiences for the United Kingdom and Ireland that, in **atmosphere, season, and style**, transcend conventional routes: a journey through light, silence, and watery landscapes that speak to the soul. The proposals are designed to inspire special categories of travelers:

- **Couples on honeymoon or anniversary, seeking silence and wonder**
- **Seniors and over 65s, looking for comfort, beauty and stimulation**
- **People with disabilities, with accessible and carefully designed routes**
- **Students, with experiences that combine learning, observation and adventure**

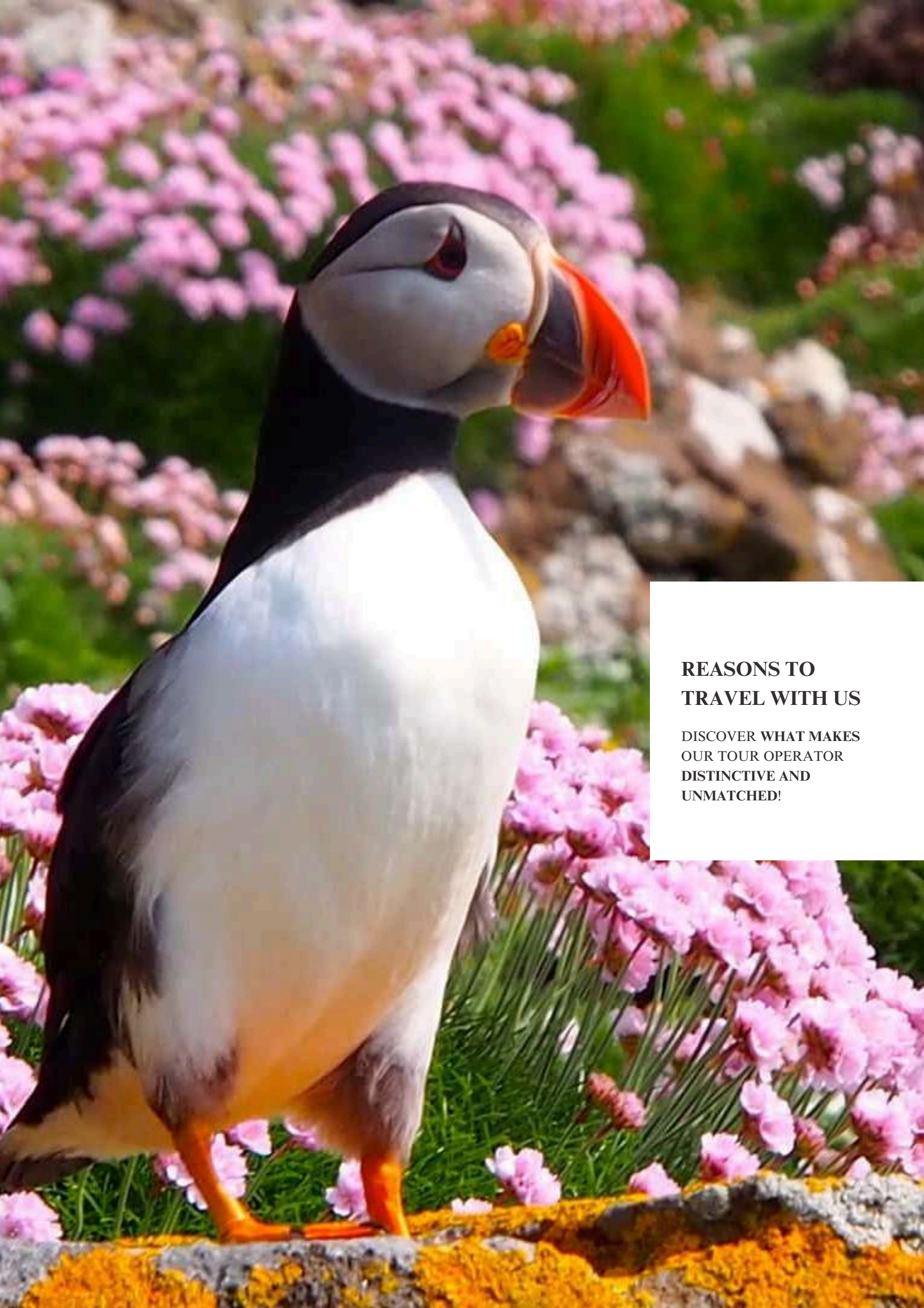
Get inspired. We're ready to guide you toward **new horizons**, accompanying you through every phase, from design to implementation, ensuring **flexibility, quality, and strong cultural value**.

Choose Atlantic Travel & Tours to transform your trips into memorable opportunities for growth and exchange.



Steve Tabacchi

DR. STEVE TABACCHI
CEO - FOUNDER
ATLANTIC TRAVEL & TOURS



**REASONS TO
TRAVEL WITH US**

**DISCOVER WHAT MAKES
OUR TOUR OPERATOR
DISTINCTIVE AND
UNMATCHED!**

BESPOKE TRAVEL FOR EVERYONE



OUR TRAVEL ITINERARIES

We exclusively curate itineraries for innovative and original travel experiences that diverge from the conventional paths of mass tourism. Our aim is for each customer to be the protagonist of their own journey.

OUR TRAVEL CLASSES

We organize travel for the following classes:

- **FIRST**
- **PREMIUM**
- **ECONOMY**

WE ORGANIZE ITINERARIES WITH THE FOLLOWING VESSELS



SAILING BOAT

- ✔ CHARTER
- ✔ TAILOR-MADE TOURS WITH SKIPPER



SPEEDBOAT

- ✔ CHARTER
- ✔ TAILOR-MADE TOURS WITH SKIPPER



CATAMARAN

- ✔ CHARTER
- ✔ TAILOR-MADE TOURS WITH SKIPPER



MOTOR YACHT

- ✔ CHARTER
- ✔ TAILOR-MADE TOURS WITH SKIPPER



SHIP

- ✔ CRUISES BEYOND THE BOUNDARIES OF TRADITIONAL TOURISM

EXCLUSIVE ROUTES FOR AUTHENTIC EMOTIONS

WEEKLY ITINERARIES BY SAILING, MOTORBOAT, CATAMARAN AND MOTOR YACHT

We organize weekly itineraries by sailboat, speedboat, catamaran, and motor yacht, entirely tailored to meet specific needs. Our packages are ideal for exclusive honeymoons, unforgettable anniversary celebrations, and stays designed for groups of over-65s, people with disabilities, and students. Each experience is carefully curated down to the smallest detail, with a focus on comfort, accessibility, and authenticity.

CRUISES

Our carefully selected cruises stand out for their unique itineraries, far from the beaten tourist track, perfect for travelers seeking authenticity. Each departure is preceded by an original pre-cruise experience, including unusual locations and out-of-the-ordinary activities. Our cruises are designed for honeymoons, anniversaries, groups of over-65s, people with disabilities, and students, with the goal of offering a truly inclusive, engaging, and memorable trip.



TRAVELER CATEGORIES



HONEYMOONS

One of the most beautiful and significant events in life warrants celebration with the highest level of attention and meticulous care for every detail.



ANNIVERSARIES

Seize the exceptional opportunity to commemorate and rejuvenate your bond of love in an ideal setting for the occasion, complete with a potential wedding vow renewal ceremony where applicable.



DISABLED - GROUPS AND INDIVIDUALS

Life is an experience to be embraced fully, without exceptions. We are here to provide our assistance in organizing customized trips tailored to meet the diverse needs associated with various disabilities.



SENIOR - GROUPS AND INDIVIDUALS

The ideal moment to embrace life fully and explore the world is now, alongside friends, former colleagues, and family! Seize the opportunity to forge unforgettable memories!



STUDENTS

Sailing means learning without even realizing it: every route is a living lesson through landscapes, cultures, and nature. Whether you love biology, history, or art, there's always an itinerary that speaks your language...

PRIORITY CHECK-IN AND CHECKED BAGGAGE

Bid farewell to lengthy check-in queues! With our priority check-in service, you can swiftly obtain your boarding pass and check in your baggage. We are consistently prepared to provide this option, contingent upon airline availability, to enhance your travel experience, whether you are flying in premium or economy class. **Do not squander time; opt for comfort!**



NO QUEUES AT THE AIRPORT WITH THE FAST TRACK SERVICE



We understand the frustration of enduring lengthy waits at airport security. Therefore, we consistently incorporate fast track access into our travel packages, allowing you to bypass the queue and enjoy a stress-free experience.

The service is contingent upon the availability at each airport, thus we cannot assure its constant accessibility. Nevertheless, we are pleased to announce that it has been implemented in the majority of the airports we utilize. **Seize this opportunity!**





COMFORT IN AIRPORT LOUNGES

Once reserved solely for business and first-class passengers, airport lounges are now available to travelers in other classes as well. We provide the highest level of comfort and luxury to ensure your airport experience is memorable. In our travel packages, we consistently strive to include access to these exclusive areas at both departure and arrival points (subject to airport and airline availability). Relax, indulge in culinary delights, savor fine beverages, and enjoy refreshing showers, all within elegant and tranquil settings. **Seize this exceptional opportunity!**



OTHERS SERVICES

OUR EXCEPTIONAL PARTNERSHIPS WITH DIVERSE SUPPLIERS ENABLE US TO PROVIDE OUR CUSTOMERS WITH THE FINEST OF THE FOLLOWING SERVICES

ADVANCED LUGGAGE SHIPPING
TOURIST VISAS
CURRENCY EXCHANGE
INSURANCE POLICIES



	AUD	7.01
	NZD	5.05
	JPY	0.0913
	GBP	11.23
	EUR	9.71
	SGD	5.35
	QAR	7.00





ONE FREE INDIVIDUAL FOR EVERY 15 PAYING CUSTOMERS

Take advantage of our **perpetually active** promotion. If you can gather a **minimum of 15 individuals**, one person will receive a **complimentary** trip. Consider anyone who might be interested among family, friends, colleagues, or others. Additionally, if you require a tour leader or tour guide to assist you and your group throughout the entire tour, we can provide this service as well

ALWAYS TRAVEL WITH A PREMIUM DISCOUNT!



-20%

- **ACTIVE YEAR-ROUND**
- **FOR ALL CATEGORIES OF TRAVELERS**
- **NO MINIMUM SPENDING THRESHOLD REQUIRED**



TRAVEL PHOTOGRAPHER

FOR AN UNFORGETTABLE TOUR
FOREVER



Certain journeys hold a unique significance: a honeymoon, a wedding anniversary marked by the renewal of vows, or cherished moments spent with close friends or family. Such beautiful occasions will be immortalized through professional photography and videography. Should you wish to incorporate this option into your upcoming trip, we are pleased to provide assistance with photographers who can transform your experience into a lasting memory

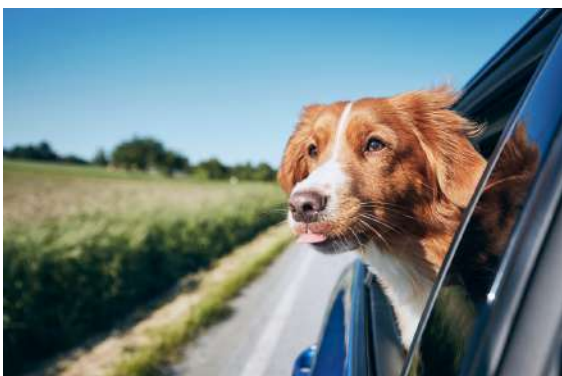
TRAVELING WITH PETS



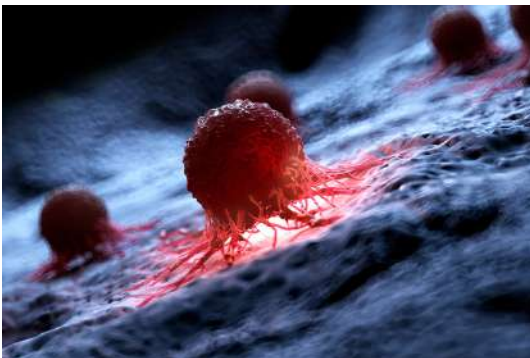
Do you wish to travel but are uncertain about who to entrust your four-legged companion to? Why not bring him or her along for the adventure? After all, he or she is an essential member of your family. We also arrange customized trips for this specific situation

SERVICES OFFERED

- **TRANSPORT**
- **ACCOMMODATION**
- **PET SITTING SERVICE**
- **TRAVEL INSURANCE FOR ANIMALS**



SERVICE CURRENTLY AVAILABLE PRIMARILY ON SAILING BOATS, CATAMARANS, SPEEDBOATS, AND MOTOR YACHTS



OUR COMMITMENT TO ENVIRONMENTAL PROTECTION AND CANCER RESEARCH

THROUGH OUR TRIPS, WE AIM TO PROVIDE OUR CUSTOMERS WITH THE OPPORTUNITY TO **SUPPORT** NON-PROFIT ORGANIZATIONS DEDICATED TO ADDRESSING THE FOLLOWING GLOBAL CHALLENGES.

- **CONSERVATION OF PLANT AND ANIMAL LIFE**
- **GLOBAL WARMING**
- **CANCER RESEARCH**



MODEL ITINERARIES

**OUR ITINERARIES TO
INSPIRE YOU AND TO CRAFT
AN ADVENTURE BEYOND
THE COMMON PATHS OF
MASS TOURISM**

UNITED KINGDOM

BETWEEN SACRED CLIFFS, ANCIENT COASTS AND WILD-HEARTED ISLANDS

Sailing along the coasts of the United Kingdom means traversing a dramatic geography, sculpted by centuries of wind, tides, and history. From the white cliffs of southern England to the green bays of Wales, from the fjords of Scotland to the secluded islands of Shetland, Orkney, and the Hebrides, every landing speaks to the profound connection between nature and culture, with stories of explorers, fishermen, and holy hermits. The British coasts, often overlooked in nautical tourism, offer ideal routes for those seeking authentic atmospheres, powerful nature, and contact with coastal communities still tied to the rhythms of the sea.

The Irish Sea reveals Northern Ireland's most secret soul, with Norman castles, quiet bays, and Gaelic villages where traditions endure. To the north, Scotland opens up a world of remote archipelagos: the Orkneys and Shetlands with their Arctic light and Viking traces; the Hebrides, a kingdom of moors, golden eagles, and seaside distilleries. Further south, Wales surprises with its marine parks, historic harbors, and headlands inhabited by seals and dolphins. Even the less explored east coast of England offers hidden gems among the waters of the North Sea and timeless seaside villages.

Whether you choose a sailboat, a catamaran, or a small motoryacht, or whether you prefer a themed or nature cruise, the United Kingdom reveals a nautical dimension full of surprises. Sailing here means letting yourself be guided by ancient routes, rediscovering a profound and poetic Europe, made of silence, genuine encounters, and landscapes that change with every tide.





ARCHIPELAGOS OF NORTH-WEST SCOTLAND BETWEEN GAELIC CULTURE, WHISKY AND ARCTIC NATURE

WEEKLY ITINERARY BY SAILING, MOTORBOAT, CATAMARAN, AND MOTOR YACHT

IDEAL SEASON: FROM MAY TO EARLY SEPTEMBER

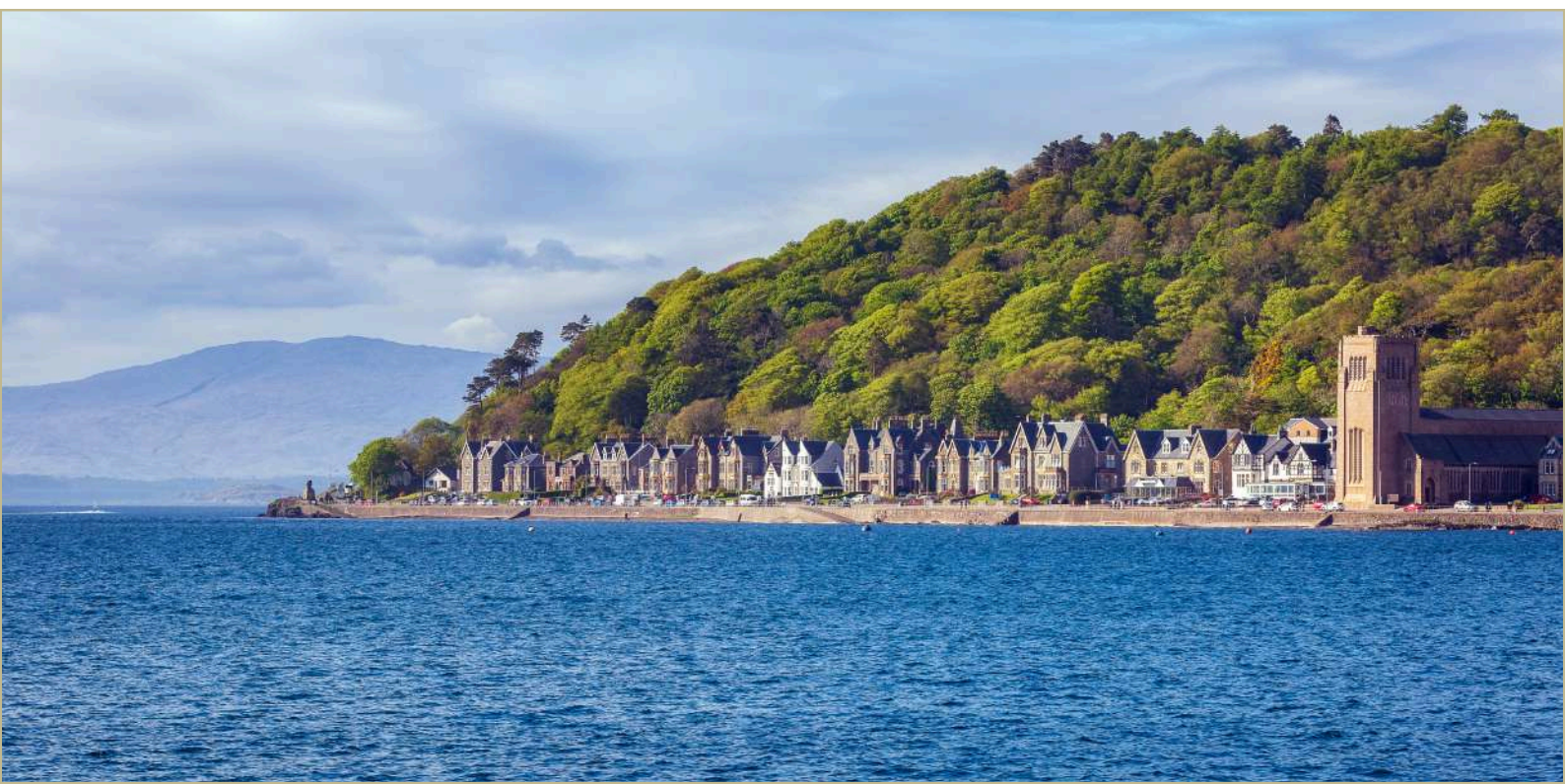
SUITABLE FOR:

- HONEYMOONERS OR ANNIVERSARY COUPLES SEEKING SECLUSION, DRAMATIC LANDSCAPES, AND ROMANTIC VILLAGES
- SENIORS / OVER 65S WHO ARE ACTIVE AND LOVE SLOW SAILING, CELTIC HISTORY AND TRADITIONAL DISTILLERIES
- FAMILIES SEEKING PURE NATURE, WILDLIFE AND SMALL, WELCOMING COMMUNITIES
- PEOPLE WITH DISABILITIES, IF ON BOARD EQUIPPED CATAMARANS OR MOTORYACHTS
- STUDENTS INTERESTED IN GAELIC CULTURE, ANCIENT GEOLOGY, AND NORTH SEA MARINE BIODIVERSITY
- LOVERS OF PHOTOGRAPHY, WILDLIFE, PEAT AND WINDY COASTS

This itinerary begins in **Oban**, considered the gateway to Scotland's Western Isles. After a brief stop on the vibrant **Isle of Mull**, with the picturesque, colorful harbor of **Tobermory**, you'll continue to the smaller islands of **Coll** and **Tiree**, famous for their white beaches, arctic light, and endless sunsets. Here, you can anchor in secluded bays, swim in crystal-clear waters, and encounter small communities where Gaelic is still spoken.

From Tiree, the route heads south to the Outer Hebrides, touching **Barra** and **Eriskay**, islands with a strong cultural identity, steeped in stories of shipwrecks and Celtic myths. Sailing towards **South and North Uist**, you'll explore inland lagoons, Neolithic ruins, and landscapes of peat bogs and powdery sand. Days are spent hiking, meeting local artisans, and visiting artisanal distilleries. The itinerary concludes in **Harris** and **Lewis**, islands of great spiritual power, where granite mountains overlook deserted beaches, and the stone circles of **Callanish** tell of a mysterious and ancestral past.

A week between sea and sky, the sound of the wind and that of a still-living culture, in one of Europe's most remote and fascinating places. Here, every landing is an invitation to slow down, observe, and connect with Scotland's wildest and most poetic soul.





SAILING BETWEEN ISLANDS WITH ANCIENT HISTORIES, MEGALITHIC RUINS, UNSPOILED NATURE AND GAELIC HOSPITALITY

WEEKLY ITINERARY BY SAILING, MOTORBOAT, CATAMARAN, AND MOTOR YACHT

IDEAL SEASON: FROM LATE MAY TO EARLY SEPTEMBER

SUITABLE FOR:

- COUPLES ON THEIR HONEYMOON OR ANNIVERSARY SEEKING RAREFIED ATMOSPHERES AND THE POETRY OF SILENCE
- SENIORS / OVER 65 ACTIVE AND CURIOUS TO EXPLORE THE DEEP HISTORY OF NORTH-WESTERN EUROPE
- FAMILIES SEEKING AUTHENTIC EXPERIENCES AMIDST NATURE, MYTHS, AND SMALL SEASIDE VILLAGES
- PEOPLE WITH DISABILITIES, IF ON BOARD EQUIPPED CATAMARANS OR MOTORYACHTS
- STUDENTS INTERESTED IN ARCHAEOLOGY, NORSE ETHNOGRAPHY, AND NORDIC CULTURAL GEOGRAPHIES
- LOVERS OF PHOTOGRAPHY, COASTAL GEOLOGY, AND WIND-SCULPTED LANDSCAPES

This accessible itinerary begins in **Kirkwall**, where you'll board a motoryacht or catamaran equipped for those with limited mobility, operated by local companies offering comfort, safety, and assistance. The first route takes you to **Shapinsay**, a small, verdant island with flat paths, seals visible from the coast, and an accessible visit to **Balfour Castle**. The next day, you'll sail to **Rousay**, the "island of archaeology," where you can explore sites like the **Midhowe Chambered Cairn** with specially adapted walkways and expert guides. The third day is dedicated to the lesser-known **Westray**, where you can discover the **Noup Head** cliff (accessible by adapted vehicle), lobster farms, and small artisan workshops.

We then continue to **Eday or Sanday**, with its white sands and pristine nature. Here, you can take short wheelchair-accessible excursions along the coastline and visit small local museums run by the communities. The next day, we reach **Papa Westray**, for a thrilling experience in the **Knap of Howar**, among the oldest stone houses in Europe: accessible with assistance and accessible surfaces. Finally, we return to **Stromness**, where we immerse ourselves in the atmosphere of this poetic seaside village, with accessible art galleries, local cafés, and tales of sailors and whalers. The journey concludes with the option of a guided tour of the **Neolithic Heart of Orkney**, a UNESCO World Heritage Site: **Skara Brae**, the **Ring of Brodgar**, and **Maeshowe**, all equipped with accessibility and interpretation facilities for the hearing and visually impaired. A week of remote past, modern hospitality, and landscapes that touch the soul.





NAVIGATION BETWEEN NATURE RESERVES, HIDDEN COVES AND CULTURAL HERITAGE

WEEKLY ITINERARY BY SAILING, MOTORBOAT, CATAMARAN, AND MOTOR YACHT

IDEAL SEASON: FROM MAY TO SEPTEMBER

SUITABLE FOR:

- COUPLES ON HONEYMOON OR ANNIVERSARY SEEKING SEASCAPES AND TRANQUILITY
- SENIORS / OVER 65 ACTIVE AND PASSIONATE ABOUT COASTAL FLORA AND FAUNA
- FAMILIES INTERESTED IN NATURE EXPERIENCES AND GENTLE WATER SPORTS
- PEOPLE WITH DISABILITIES, IF ON BOARD EQUIPPED CATAMARANS OR MOTOR YACHTS
- MARINE BIOLOGY AND ENVIRONMENTAL CONSERVATION STUDENTS
- LOVERS OF BIRDWATCHING, LOCAL CUISINE AND WELSH LEGENDS

Departure is from the picturesque port of **Tenby**, a historic village with medieval walls, cobbled streets, and a welcoming atmosphere, the perfect starting point for an authentic sea voyage. From here, the sail heads towards the spectacular islands of **Skomer** and **Ramsey**, true natural sanctuaries where thousands of seabirds nest, including colorful puffins and elegant razorbills. The islands, with their well-maintained trails and protected nature reserves, are a paradise for birdwatchers and nature photographers.

The voyage alternates between stops in quiet, peaceful bays, ideal for relaxation and swimming, and visits to lesser-visited historic sites, such as the ancient fortresses of **Carew Castle** and **Pembroke Castle**, the watchtowers of **St. Govan's Chapel**, and the ancient pilgrimage trails along the **Pembrokeshire Coast**, which tell the story of these lands' millennia-old history. Carefully selected landing places allow for hiking on trails accessible even to those with special needs, ensuring everyone has the opportunity to explore the extraordinary biodiversity and marine landscapes of great environmental value. Guided seabird-watching excursions are organized along the route, often in remote corners where nature reigns supreme. Some overnight stays include stops in small fishing ports, such as **Marloes** and **St. Brides**, where you can discover authentic local traditions, partake in tastings of typical Welsh dishes, and immerse yourself in the hospitality of the coastal communities.

The entire itinerary is designed to offer a slow and rejuvenating travel experience, ideal for those who wish to combine nature, culture, and relaxation, in an inclusive and welcoming environment thanks to onboard staff trained to assist guests with special needs. Educational activities, such as environmental conservation workshops and meetings with expert naturalists, further enrich the program, making this itinerary suitable for travelers of all ages and sensibilities.





SAILING BETWEEN RUGGED COASTLINES, SUBTROPICAL GARDENS AND PICTURESQUE VILLAGES

WEEKLY ITINERARY BY SAILING, MOTORBOAT, CATAMARAN, AND MOTOR YACHT

IDEAL SEASON: FROM APRIL TO OCTOBER

SUITABLE FOR:

- HONEYMOONERS OR ANNIVERSARY COUPLES SEEKING ROMANCE AND WILDERNESS
- SENIORS / OVER 65S WHO LOVE GARDENS, HISTORY, AND SMOOTH SAILING
- FAMILIES INTERESTED IN LOCAL CULTURE AND GENTLE MARINE ACTIVITIES
- PEOPLE WITH DISABILITIES, IF ON BOARD EQUIPPED CATAMARANS OR MOTORYACHTS
- STUDENTS OF BOTANY, MARITIME HISTORY, AND ENVIRONMENTAL CONSERVATION
- LOVERS OF LANDSCAPE PHOTOGRAPHY AND TRADITIONAL ENGLISH CUISINE

The itinerary begins in **Falmouth**, the gateway to **Mounts Bay** and the **Isles of Scilly**, with a microclimate that offers an explosion of unique flora and fauna. The itinerary visits lesser-known islands such as **Bryher** and **Tresco**, with its famous subtropical gardens, and the charming and historic village of **Hugh Town**. Activities include nature hikes on accessible trails, visits to historic villages, and relaxation in crystal-clear bays. The itinerary favors vessels with accessible facilities, making this marine and cultural exploration experience accessible even to those with limited mobility.

During the voyage, you can admire spectacular sunsets from easily accessible vantage points, and take guided tours of the **Tresco** gardens, home to rare botanical species from around the world. Evenings on board offer the opportunity to sample local specialties and listen to tales of the region's maritime history. The itinerary is also designed for those who enjoy combining culture and nature with comfort and accessibility.





SAILING BETWEEN MAJESTIC CLIFFS, TRADITIONAL VILLAGES AND WILD LANDSCAPES

WEEKLY ITINERARY BY SAILING, MOTORBOAT, CATAMARAN, AND MOTOR YACHT

IDEAL SEASON: FROM MAY TO SEPTEMBER

SUITABLE FOR:

- HONEYMOON OR ANNIVERSARY COUPLES LOOKING FOR DRAMATIC VIEWS AND TRANQUILITY
- SENIORS / OVER 65S PASSIONATE ABOUT HISTORY, MYTHOLOGY AND NATURE
- FAMILIES SEEKING GENTLE ADVENTURE AND DISCOVERY OF LOCAL CULTURES
- PEOPLE WITH DISABILITIES, IF ON BOARD EQUIPPED CATAMARANS OR MOTORYACHTS
- STUDENTS OF GEOLOGY, ARCHAEOLOGY AND IRISH FOLKLORE
- LOVERS OF LANDSCAPE PHOTOGRAPHY AND TRADITIONAL MUSIC

The itinerary begins in **Belfast**, sailing towards the spectacular **Antrim Coast**, with stops at the **Fairy Cove**, a UNESCO World Heritage site, and the village of **Cushendun**, known for its caves and living Gaelic tradition. Continuing, you'll explore the **Ards Peninsula**, with its dune landscapes, wild beaches, and small ports where you can experience the local maritime culture. The trip is designed to offer accessible experiences, with equipped boats, easy excursions, and direct contact with hospitable communities, for those seeking an authentic immersion in one of the lesser-known corners of the United Kingdom. In addition to nature excursions, the itinerary includes visits to small local museums such as the **Ulster Folk and Transport Museum** and the **North Down Museum**, as well as meetings with artisans who keep local traditions alive. Traditional Irish music and stories of myth and legend are an integral part of the experience, which may also include dance and singing workshops. The journey concludes with a toast of local whiskey, celebrating the cultural and scenic richness of this unique region.





REFERENCE CODE
ATT - UK - C 1

WEEKLY CRUISE AMONG SACRED CLIFFS, VIKING SITES, AND ARCTIC COMMUNITIES

SEASONALITY: FROM THE END OF MAY TO THE END OF AUGUST

TRAVEL CATEGORIES

- COUPLES ON THEIR HONEYMOON OR ANNIVERSARY SEEKING ABSOLUTE SILENCE, ENDLESS SKIES AND NORDIC LEGENDS
- SENIORS / OVER 65S ACTIVE AND LOVERS OF ARCTIC ROUTES AND NORSE HISTORY
- FAMILIES IN SEARCH OF WILDLIFE AND SMALL COMMUNITIES WHERE TIME HAS STOOD STILL
- PEOPLE WITH DISABILITIES
- STUDENTS INTERESTED IN VIKING ARCHAEOLOGY, GLACIAL GEOLOGY, AND NORTH ATLANTIC CULTURE
- LOVERS OF PHOTOGRAPHY, BIRDWATCHING AND WINDSWEPT COASTS

PRE-CRUISE EXPERIENCE

Three nights in **Aberdeen**, the cultural capital of northeastern Scotland, known for its granite architecture and coastal gardens. Your base is a hotel in the heart of the historic city center, from which you'll visit **St. Machar's Cathedral** and the **Maritime Museum**, before embarking on a guided hike along the **Stonehaven** coast to **Dunnottar Castle**, perched on a cliff overlooking the North Sea. The second day is dedicated to a visit to the **Glen Garioch Distillery**, one of the oldest distilleries in the **Highlands**, with an accessible tasting and a traditional lunch. On the third day, you'll participate in a Nordic culture workshop at the **University Museum of Aberdeen**, featuring inclusive activities and a focus on the Viking routes that passed through Shetland. The experience is designed to offer an introduction to the stories, landscapes, and spirituality of the North, preparing your mind and heart for an adventure among Scotland's most remote islands.



REASONS TO GO

This cruise offers the opportunity to immerse yourself in the most authentic **Shetland**, far from mass tourism and rich in age-old traditions. Departing from **Aberdeen**, you'll head to **Lerwick**, the cultural heart of the islands, where you can visit the local museum and discover the daily lives of the locals. Continuing on to **Yell** and **Unst**, you'll explore areas of great natural beauty, with secluded beaches and colonies of seals and puffins, living symbols of a fragile and protected ecosystem.

The islands of **Fetlar** and **Fair Isle** are astonishing for their pristine nature and historic lighthouses, crucial to navigation in the North Atlantic. Here, the art of hand-weaving is still a living tradition, while local communities, though small, maintain a strong Gaelic language and traditional song, offering visitors moments of authentic cultural exchange.

The cruise includes accessible excursions among arctic mosses and windswept cliffs, where you can observe native sheep and unique marine life. Onboard guides, including archaeologists and naturalists, tell stories of ancient Neolithic settlements, Viking trade routes, and legends of selkies, the mythical seal women of local sagas.

Docking at remote villages, such as **Belmont on Unst** or **Ham on Foula**, allows for close encounters with local communities, visits to rural schools, and traditional fishing and weaving workshops, offering an immersive experience that respects the local environment. The slow pace of the voyage encourages moments of reflection, relaxation, and cultural exploration, in an environment equipped to ensure accessibility and comfort for all travelers.



REFERENCE CODE
ATT - UK - C 2

CRUISE ALONG THE DEVON AND CORNWALL COAST, PAST SECRET GARDENS AND SEASIDE VILLAGES

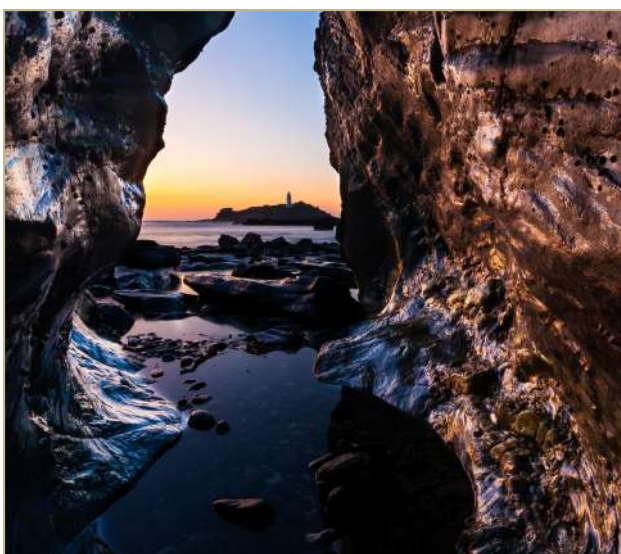
SEASONALITY: FROM APRIL TO SEPTEMBER

TRAVEL CATEGORIES

- HONEYMOONERS OR ANNIVERSARY COUPLES SEEKING ROMANCE AMONG COASTAL COTTAGES, SECLUDED COVES, AND SEASIDE SUNSETS
- SENIORS / OVER 65S WHO LOVE HISTORIC GARDENS, ARISTOCRATIC HOMES AND WALKS THROUGH FLOWER-FILLED PARKS
- FAMILIES INTERESTED IN FISHING VILLAGES, ARTHURIAN LEGENDS, AND NATURE ACTIVITIES FOR ALL AGES
- PEOPLE WITH DISABILITIES
- STUDENTS OF BOTANY, ENGLISH LITERATURE, AND THE HISTORY OF MARITIME TRADE
- LOVERS OF LANDSCAPE PHOTOGRAPHY AND SOUTHWEST COASTAL CUISINE

PRE-CRUISE EXPERIENCE

Three nights in **Plymouth**, exploring the **Barbican's** maritime district and the remnants of Britain's great expeditions. The first day includes a guided tour of the **Mayflower Steps**, the historic site from which the famous Mayflower set sail for America in 1620, and the **National Marine Aquarium**, the UK's largest aquarium dedicated to British and international marine life, featuring native and tropical species. The day concludes with dinner on the waterfront, in a relaxed and scenic setting. The second day includes an excursion to the splendid **Mount Edgumbe House & Gardens**, a historic residence with accessible terraced gardens offering breathtaking views of Cornwall and the Tamar Estuary. On the third day, we depart for **Totnes**, a vibrant village with alternative culture, known for its artistic community, independent shops, organic produce and local craft markets, and the bohemian atmosphere that permeates its streets. Here, we visit the local market before transferring to the port of embarkation. Those interested can opt for a botanical tour to discover Cornwall's gardens, including the famous Lost Gardens of Heligan, or the Eden Project, a complex of exceptional greenhouses housing plants from around the world. Both are accessible and offer an immersive experience of nature and biodiversity. Accommodations are carefully selected to ensure comfort, even for those with special needs. The city also offers lively literary cafés and small, historic bookshops, ideal for those seeking a thorough cultural introduction to the region. The time before the cruise is a great way to slowly immerse yourself in the maritime and rustic rhythm of southwestern England.



REASONS TO GO

This cruise follows a route that highlights lesser-known yet charming corners, departing from **Fowey**, a historic port nestled in a picturesque bay where you can visit ancient abbeys and stroll through cobbled streets dotted with art galleries. In **St. Ives**, famous for its distinctive light that has attracted artists like Barbara Hepworth, you can explore artisan workshops and enjoy golden beaches where you can relax or surf.

The passage to **Salcombe** offers a combination of sheltered bays and coastal paths, with the opportunity to visit renowned botanical gardens like **Sharpham** or watch traditional regattas. A stop in **Padstow** is an immersion in traditional Cornish cuisine, with internationally renowned seafood restaurants and markets where you can buy fresh local produce.

Throughout the voyage, the rugged coastline is a haven for spotting dolphins, gannets, and herring gulls, while historic lighthouses like **Godrevy** tell tales of sailors and shipwrecks. Each port offers small cultural gems, including fishing museums, local craft markets, and ancient homes converted into cultural centers.

The itinerary is designed for those seeking a slow and refined journey, where contemplation of nature and cultural discovery combine with gastronomic and creative experiences. All with particular attention to accessibility for travelers with limited mobility, ensuring comfort and inclusivity without sacrificing authenticity.



REFERENCE CODE
ATT - UK - C 3

WEEKLY CRUISE ALONG THE PEMBROKESHIRE COAST AND TO THE ISLE OF ANGLESEY

SEASONALITY: FROM MAY TO SEPTEMBER

TRAVEL CATEGORIES

- HONEYMOON OR ANNIVERSARY COUPLES LOOKING FOR POETIC LOCATIONS, HIDDEN BEACHES, AND CELTIC SYMBOLS
- SENIORS / OVER 65S ACTIVE AND PASSIONATE ABOUT ARCHAEOLOGY, WELSH GARDENS AND CULTURAL EXCURSIONS
- FAMILIES INTERESTED IN NATURE EXPLORATION, WILDLIFE SPOTTING, AND ORAL TRADITIONS
- PEOPLE WITH DISABILITIES
- STUDENTS OF MYTHOLOGY, CELTIC HISTORY, AND MARINE CONSERVATION
- LOVERS OF LANDSCAPE PHOTOGRAPHY, LOCAL CRAFTS AND TRADITIONAL WELSH MUSIC

PRE-CRUISE EXPERIENCE

Three nights in **Cardiff**, with accommodations in the city center and a guided tour of the main attractions: **Cardiff Castle**, with its fairytale towers and Victorian interiors; the **Central Market**, a bustling covered market selling local produce; and the famous Victorian arcades like the **Royal Arcade** and the **Morgan Arcade**, historic arcades housing artisan workshops and independent bookshops. The second day includes an excursion to **St. Davids**, the smallest city in the United Kingdom, with a visit to its extraordinary medieval cathedral nestled among green hills and a scenic stop along the **Pembrokeshire coast**, a National Heritage Site for its pristine beauty. The third day includes a visit to the **National Botanic Garden of Wales**, known for its large domed glasshouse and accessible trails through natural habitats, and a stop at the **Dylan Thomas Centre** in **Swansea**, dedicated to the life and works of the famous Welsh poet, before transferring to the port. Alternatively, those seeking peace and quiet can join an accessible section of the **Pembrokeshire Coast Path**, a coastal path over 300 km long that follows the cliffs and beaches of southwest Wales, offering spectacular sea views and wildlife. The path is accessible in short sections and is also accessible for people with limited mobility, always accompanied by expert guides. Evenings feature live folk music in historic pubs and small local art galleries, ideal for immersing yourself in Welsh creativity. The stay is designed to offer a first taste of Welsh atmosphere, encouraging a slow and mindful introduction to the local culture. Transportation and accommodation services are fully inclusive, with specialized assistance available for those who need it.



REASONS TO GO

The cruise winds through unique and rarely visited locations, each with its own unique characteristics that reflect the richness of coastal **Wales**. In **Fishguard**, you'll discover the port's military and cultural history, while the picturesque streets are home to artisan shops and traditional cafés. A visit to **Skomer Island** offers a close encounter with the famous colony of puffins, birds with their distinctive plumage, as well as a protected ecosystem that arouses birdwatchers' interest.

The stop in **Aberaeron** offers glimpses of colorful Victorian architecture and local markets where you can sample Welsh cheeses and traditional produce. The island of **Anglesey** is distinguished by its rugged coastline and secluded bays, home to seal colonies and pre-Roman archaeological sites such as Din Lligwy Fort, accessible to those with limited mobility.

At each port, experiences encompass traditional flavors, with lamb and fresh fish dishes, and Celtic legends told by expert guides, who bring the landscapes to life with tales of druids and ancient battles. The presence of well-maintained trails, adapted transportation, and welcoming accommodations makes the itinerary suitable even for travelers with special needs.

This cruise is ideal for those who want to immerse themselves in the wild nature of **Wales**, discover its ancient culture and experience moments of authentic relaxation away from mass tourism, without sacrificing comfort and accessibility.



REFERENCE CODE
ATT - UK - C 4

WEEKLY CRUISE ALONG THE CAUSEWAY COASTAL ROUTE AND THE ISLANDS OF RATHLIN AND LOUGH FOYLE

SEASONALITY: FROM MAY TO SEPTEMBER

TRAVEL CATEGORIES

- **HONEYMOONERS OR ANNIVERSARY COUPLES SEEKING ROMANCE AMONG LEGENDARY CLIFFS AND SECLUDED LIGHTHOUSES**
- **SENIORS / OVER 65S ACTIVE AND ATTRACTED BY HISTORIC DISTILLERIES, CASTLES AND EASY SCENIC ROUTES**
- **FAMILIES INTERESTED IN CELTIC MYTHS, WILDLIFE, AND STORIES OF PIRATES AND SAILORS**
- **PEOPLE WITH DISABILITIES**
- **STUDENTS OF GEOLOGY, VIKING HISTORY, AND IRISH LITERATURE**
- **LOVERS OF COASTAL PHOTOGRAPHY, FOLK MUSIC AND NORTHERN IRISH CUISINE**

PRE-CRUISE EXPERIENCE

Three nights in **Belfast**, including a visit to the **Titanic Belfast Museum**, an innovative interactive facility built on the original shipyard site where the Titanic was launched, which tells the story of the famous ocean liner and the industrial city that built it. You'll also visit the historic **Linen Hall Library**, Belfast's oldest library, founded in 1788 and known for its unique archive of Northern Irish culture, and mural districts, such as the **Falls and Shankill Road**, which tell the city's complex political and social history through art. On the second day, you'll explore the **Glens of Antrim** region, nine glacial valleys with spectacular landscapes between sea and mountains, with stops in **Cushendun**, a coastal village known for its natural caves and strong Scottish influence; **Glenariff**, known as the "Queen of the Glens," famous for its waterfalls and woodland trails; and **Glenarm Castle**, one of the oldest inhabited Norman castles in Northern Ireland, with its historic terraced gardens accessible to visitors. The third day includes a guided walk on the **Giant's Causeway**, the famous UNESCO geological site formed by volcanic basalt columns, followed by a tasting at a local distillery (such as **Bushmills**) and a scenic transfer along the **Causeway Coastal Route** to the port of embarkation. Those who prefer an urban approach can also include a visit to the **MAC (Metropolitan Arts Centre)**, one of the city's most modern cultural centers, with contemporary art exhibitions and theater performances, and a river cruise on the **Lagan River**, which allows you to discover the city from a different perspective, navigating its industrial past and architectural present. The stays are designed to offer a rich and authentic taste of Northern Ireland's culture, combining tradition and urban rebirth. All activities are accessible, with partner establishments equipped to meet every need. Pre-cruise time is designed to discover the historical and landscape complexity of an often overlooked area.



REASONS TO GO

This coastal cruise allows you to explore some of Northern Ireland's lesser-known areas, with targeted stops that reveal the authentic soul of this region. In **Portrush**, you'll visit the rocky peninsula with spectacular views of the Atlantic and enjoy tastings in small local restaurants specializing in fresh seafood. In **Ballycastle**, the experience focuses on textile craftsmanship and ancient agricultural traditions, with visits to linen farms and workshops.

A stop in **Portstewart** offers peaceful strolls along the famous Victorian waterfront and access to some of the region's widest and most pristine beaches, ideal for travelers with limited mobility. **Londonderry**, a walled city of great historical significance, offers accessible itineraries that combine remembrance, urban art, and stories of peace and reconciliation. Finally, a stop on **Rathlin Island** allows for direct contact with the natural environment: observe colonies of seabirds and visit the accessible environmental center, in a setting where time seems to have stood still.

Each stop is designed to offer authentic, accessible experiences rooted in the local context, without the tourist trap. The itinerary is perfect for those seeking a cultural and naturalistic journey through an often overlooked yet extraordinarily rich corner of Europe.



REFERENCE CODE
ATT - UK - C 5

WEEKLY TRANSATLANTIC CRUISE: MARITIME HISTORY, OCEANIC ELEGANCE, AND THE DISCOVERY OF THE AMERICAN EAST COAST

SEASONALITY: FROM APRIL TO OCTOBER

TRAVEL CATEGORIES

- HONEYMOON OR ANNIVERSARY COUPLES LOOKING FOR AN ELEGANT AND UNHURRIED EXPERIENCE
- SENIORS / OVER 65S WHO LOVE CLASSIC SAILING AND RELAXING ON BOARD
- FAMILIES LOOKING FOR AN EXCLUSIVE TRIP COMBINING CULTURE AND COMFORT
- PEOPLE WITH DISABILITIES
- STUDENTS INTERESTED IN NAVAL HISTORY AND ANGLO-AMERICAN CULTURE
- LOVERS OF PHOTOGRAPHY, MUSIC AND ANGLO-SAXON TRADITIONS

PRE-CRUISE EXPERIENCE

Three nights in **Southampton**, a port city steeped in history and maritime charm, with waterfront strolls and visits to naval museums. Stay in historic or boutique hotels, with easy access to the ferry terminal. Explore medieval neighborhoods such as the **Old Town**, with its ancient walls and **St. Andrew's Cathedral**, and **Medieval Merchant's House**, with its period atmosphere. Tours dedicated to the history of the great Atlantic crossings, including those of the **Titanic** and the **Mauretania**, are available. The city offers traditional restaurants where you can savor English cuisine and historic pubs with live music, especially in the **Ocean Village** and **Bedford Place** neighborhoods, offering a welcoming and lively atmosphere. During these days, you can also visit the famous botanical gardens of **Royal Victoria Country Park** and **Itchen Valley Country Park**. You can enjoy excursions in the surrounding countryside, particularly in **Hampshire**, home to picturesque villages like **Lyndhurst** and **Beaulieu**, and scenic trails through the **New Forest National Park**. The relaxed, cosmopolitan atmosphere prepares you for the long transatlantic voyage, also offering numerous opportunities for shopping, entertainment, and relaxation. The pre-cruise experience is a unique opportunity to immerse yourself in the local culture, with cultural events, craft markets, festivals, and musical performances that enrich your stay and pave the way for the fascinating crossing. Evening strolls along the illuminated pier, visits to contemporary art galleries like the **Southampton City Art Gallery**, and the opportunity to participate in tastings of typical local products such as artisanal cider, Hampshire sheep's cheeses, and traditional desserts like Southampton Figgy Pudding complete an authentic and engaging experience.



REASONS TO GO

This transatlantic cruise is designed for those seeking an elegant and unhurried experience, sailing one of the world's most iconic routes, combining history and luxury on board. **The itinerary connects the maritime heart of the United Kingdom to New York**, a city symbolizing energy and modernity, with a crossing that offers moments of pure relaxation and contemplation on the open sea. On board, shows, lectures, and cultural activities complement each day, while the ocean panorama slowly changes before passengers' eyes, offering a sense of wonder and introspection. The voyage combines a love of traditional sailing with contemporary comforts and is suitable for couples, families, and active seniors seeking a refined and engaging experience. The arrival in **New York** offers the opportunity to discover unique museums, theaters, and neighborhoods, with organized excursions to iconic sites such as the **Statue of Liberty**, **Central Park**, and **Harlem**. This cruise is ideal for those seeking an authentic Atlantic crossing, filled with moments of conviviality and discovery, far from mass tourism. The experience represents a dialogue between past and present, between naval tradition and urban cosmopolitanism, making every day unique and memorable. Onboard expert discussions delve into the history of ocean crossings and the culture of the cities visited, while evenings are enlivened by gourmet dinners and live music. This voyage captivates those who wish to immerse themselves in the magic of the ocean and cities that symbolize new beginnings, at a slow pace and rich in emotion.

REPUBLIC OF IRELAND

CELTIC ROUTES BETWEEN OCEAN, SACRED ISLANDS AND TIMELESS VILLAGES

Sailing along the coasts of the Republic of Ireland is an intimate and powerful experience, where the sea meets a land of myth, music, and spirituality. The Atlantic sculpts the cliffs, caresses the pastures, and shapes an archipelago of secluded islands, forgotten lighthouses, ancient monasteries, and resilient communities. The west coast, from Cork to Donegal, passing through Galway Bay and Connemara, is one of the most scenic in Europe, with windswept headlands, colonies of seabirds, and natural harbors nestled between the rocks.

The Aran Islands, Skellig Michael, the Blasket Islands, and Clare Island are timeless places, where Gaelic is still spoken, ancestral songs are passed down, and life is lived to the rhythms of the ocean. The southern coast, from Kinsale to Bantry Bay, also boasts fishing villages, sheltered bays, and ancient lighthouses transformed into observation points. Every voyage along the Irish coast is a journey into the heart of Celtic culture, among monastic ruins, mysterious symbols, and oral tales that have survived the passage of centuries.

Sailboats, catamarans, motor yachts, or small regional cruises allow you to explore these places slowly and respectfully, in direct contact with unspoiled nature and warmly welcoming communities. In Ireland, the sea is more than just landscape: it is identity, refuge, and collective memory. A sail in these waters opens you up to a profound experience, where every island, every rock, every sunset tells a story.





AMONG ANCIENT ISLANDS, WILD COASTS AND GAELIC CULTURE ALONG THE WILD ATLANTIC WAY

WEEKLY ITINERARY BY SAILING, MOTORBOAT, CATAMARAN, AND MOTOR YACHT

IDEAL SEASON: FROM MAY TO SEPTEMBER

SUITABLE FOR:

- HONEYMOON OR ANNIVERSARY COUPLES SEEKING INTIMACY AND AUTHENTICITY AMONG REMOTE BAYS AND ATLANTIC NATURE
- SENIORS / OVER 65 ACTIVE AND LOVERS OF SLOW AND CULTURAL NAVIGATION BETWEEN GAELIC ISLANDS AND SOLITARY COASTS
- FAMILIES SEEKING TRUE MARINE EXPERIENCES AND UNSPOILED NATURE AMONG SEALS, CLIFFS AND COASTAL PATHS
- PEOPLE WITH DISABILITIES, ON EQUIPPED CATAMARANS OR MOTORYACHTS
- STUDENTS INTERESTED IN MARINE BIOLOGY, CELTIC HISTORY, AND THE LOCAL TRADITIONS OF IRELAND'S ISLAND COMMUNITIES
- LOVERS OF PHOTOGRAPHY, GAELIC FOLKLORE AND SEAFOOD CUISINE AMONG PUBS, SEAWEED AND FRESH FISH

Setting sail from **Galway**, the cultural heart of the west coast, we trace a route that crosses the **Aran Islands** to **Clare Island**, **Achill**, and **Inishbofin**, on a journey through ocean, myths, and ancient traditions. We begin on **Inis Mór**, dominated by prehistoric forts and lunar landscapes, before arriving on **Inis Meáin**, where time seems to have stood still amid stone cottages and local artisans. **Clare Island** surprises with its castles, solitary lighthouses, and tales of pirates, while **Achill Island** boasts Ireland's highest sea cliffs and villages that preserve Gaelic as their native language. The final stop on **Inishbofin** is an invitation to silence: windswept meadows, seal and dolphin sightings, and slow journeys along ancient paths. Local boats offer accessibility and comfort, with specialized guides and stops in small ports that preserve the soul of the place. A perfect itinerary for those seeking the profound authenticity of Ireland, between coastal sailing, authentic encounters, and vibrant island culture. Every landing is an opportunity for slow discovery, amidst artisan markets, traditional songs, and the sounds of spoken Gaelic. You can also participate in wool and ceramic workshops or sample local seaweed used in ancient recipes. Evenings end in warmly lit pubs, with live music and stories told around the fire. A journey that is also an immersion in a human dimension, made up of relationships, memory, and a sense of place.





BETWEEN REMOTE ARCHIPELAGOS, CELTIC LEGENDS AND THE WINDSWEPT COASTS OF DONEGAL

WEEKLY ITINERARY BY SAILING, MOTORBOAT, CATAMARAN, AND MOTOR YACHT

IDEAL SEASON: FROM JUNE TO SEPTEMBER

SUITABLE FOR:

- HONEYMOONERS OR ANNIVERSARY COUPLES SEEKING INTIMACY AND AUTHENTICITY AMONG WILD ISLANDS AND ENDLESS SKIES
- SENIORS / OVER 65 ACTIVE AND LOVERS OF SLOW AND CULTURAL NAVIGATION IN STILL AUTHENTIC GAELIC TERRITORIES
- FAMILIES SEEKING TRUE MARINE EXPERIENCES AND UNSPOILED NATURE AMONG CLIFFS, LIGHTHOUSES, AND FISHERMEN'S STORIES
- PEOPLE WITH DISABILITIES, ON EQUIPPED CATAMARANS OR MOTORYACHTS
- STUDENTS INTERESTED IN ISLAND CULTURE, TRADITIONAL MUSIC, AND ATLANTIC MARINE BIODIVERSITY
- LOVERS OF PHOTOGRAPHY, NORDIC LIGHT AND FOLKLORE AMONG DANCES, ORAL POETS AND EXTREME LANDSCAPES

Sailing along the rugged **Donegal** coast, we depart from **Burtonport** to explore a rugged and poetic archipelago, where each island holds ancient histories and pristine landscapes. The route first touches **Arranmore**, inhabited by Gaelic communities and dotted with coastal paths offering breathtaking views of the Atlantic. We continue to **Gola Island**, remote and silent, where the life of the past still breathes among uninhabited cottages and cliffs overlooking nothingness. **Tory Island** is the pinnacle of the journey: a land of artists, musicians, and local kings, shrouded in pre-Christian myths and Viking legends. Local boats are small, maneuverable, and increasingly equipped for guests with limited mobility, if booked in advance. The voyage is slow, intimate, and immersive, with the possibility of guided landings, live music in the pubs, oral storytelling, and moments of silence between the tides and the wind. Here, the journey becomes contemplation: you gaze at endless skies, the flight of gannets and seagulls, cliffs illuminated by northern sunsets. You visit small traditional music schools or listen to local poets recite verses in Gaelic. The islands also offer unique handicrafts, crafted from boat ropes, wool, and carved stone. Each day ends in front of a blazing fire, in a silence that speaks of ancient times and lives sculpted by the sea.





REFERENCE CODE
ATT - IRELAND - C 1

WEEKLY CRUISE: INACCESSIBLE MONASTERIES, OCEAN GARDENS, AND GAELIC COMMUNITIES

SEASONALITY: FROM MAY TO OCTOBER

TRAVEL CATEGORIES

- COUPLES ON THEIR HONEYMOON OR ANNIVERSARY SEEKING INTIMACY AND AUTHENTICITY AMONG RUGGED COASTLINES AND REMOTE VILLAGES
- SENIORS / OVER 65 ACTIVE AND LOVERS OF HISTORIC ROUTES BETWEEN MONASTIC ABBEYS AND VICTORIAN GARDENS BY THE SEA
- PEOPLE WITH DISABILITIES
- FAMILIES SEEKING MARINE CULTURE AND TIMELESS ISLANDS, BETWEEN WILDLIFE SIGHTINGS AND CELTIC STORIES
- STUDENTS PASSIONATE ABOUT MEDIEVAL HISTORY, UNESCO HERITAGE, AND ATLANTIC BIODIVERSITY
- LOVERS OF PHOTOGRAPHY, GAELIC CULTURE AND VILLAGES SUSPENDED BETWEEN THE CLIFFS AND THE SKY

PRE-CRUISE EXPERIENCE

Three nights in **Cork**, a vibrant and authentic city, amid historic markets, independent art galleries, and Gothic cathedrals. Stay in small boutique hotels in the city's Georgian heart, with the option of day trips to **Kinsale**, a picturesque fishing village famous for its gourmet cuisine, and **Middleton**, known for the historic **Jameson** distillery, where you can enjoy guided tours and tastings. Here, you can discover southern culinary traditions, with visits to whiskey distilleries, traditional bread-making workshops, and cooking classes dedicated to dishes featuring fresh seafood and local produce like smoked salmon and soda bread. Explore the subtropical gardens of **Fota** or **Spike Island**, a former prison and military garrison overlooking the harbor. The first few days unfold slowly, with guided tours and free time in the city center's literary cafes. Cultural tours dedicated to Viking history and nature walks along the **River Lee** are available. The relaxed and authentic atmosphere prepares the soul for contact with the wild nature and traditions of the Irish coast. The experience is rounded off with evening gatherings in historic pubs, where you can listen to stories and traditional music.



REASONS TO GO

This cruise traverses some of the most picturesque and isolated routes in southwest Ireland, between rugged peninsulas, uninhabited islands, and harbors that reveal centuries of monastic and maritime history. Stops include the mystical **Skellig Michael**, with its medieval settlements perched among the rocks, and the **Dingle Peninsula**, where Gaelic culture survives in language, music, and oral storytelling. On board, expert naturalists and local guides accompany travelers on slow and in-depth explorations, stopping at bays accessible only by sea and encountering wildlife, including seals, whales, and colonies of seabirds. The **Blasket Islands**, the last islands inhabited until the last century, offer a rare glimpse into a lost and poetic world. The voyage alternates moments of contemplation with surprising discoveries, and is designed for those seeking a timeless cultural and scenic experience, far from the beaten tourist track. The voyage offers ever-changing scenery, from windswept cliffs to small, brightly colored villages, and each stop is an invitation to immerse yourself in local history and unspoiled nature. The intimate atmosphere of the ship encourages discussion with experts and the sharing of authentic emotions, making this itinerary a journey that leaves lasting memories.



REFERENCE CODE
ATT - IRELAND - C 2

WEEKLY CRUISE THROUGH HISTORIC CITIES, CELTIC LEGENDS AND ANCIENT PORTS

SEASONALITY: FROM MAY TO OCTOBER

TRAVEL CATEGORIES

- COUPLES ON THEIR HONEYMOON OR ANNIVERSARY SEEKING ROMANTIC MOMENTS IN HISTORIC VILLAGES AND AUTHENTIC ATMOSPHERES
- SENIORS / OVER 65 ACTIVE LOVERS OF HISTORY, LITERATURE AND SMOOTH SAILING IN UNIQUE CULTURAL LANDSCAPES
- PEOPLE WITH DISABILITIES
- FAMILIES EAGER TO EXPLORE HISTORIC PORTS, RIVERSIDE NATURE AND LOCAL TRADITIONS
- STUDENTS INTERESTED IN IRISH LITERATURE, CELTIC LEGENDS, AND RIVER MOUTH BIODIVERSITY
- LOVERS OF PHOTOGRAPHY AND IRISH TRADITIONS AMONG HISTORIC ARCHITECTURE AND SEASCAPES

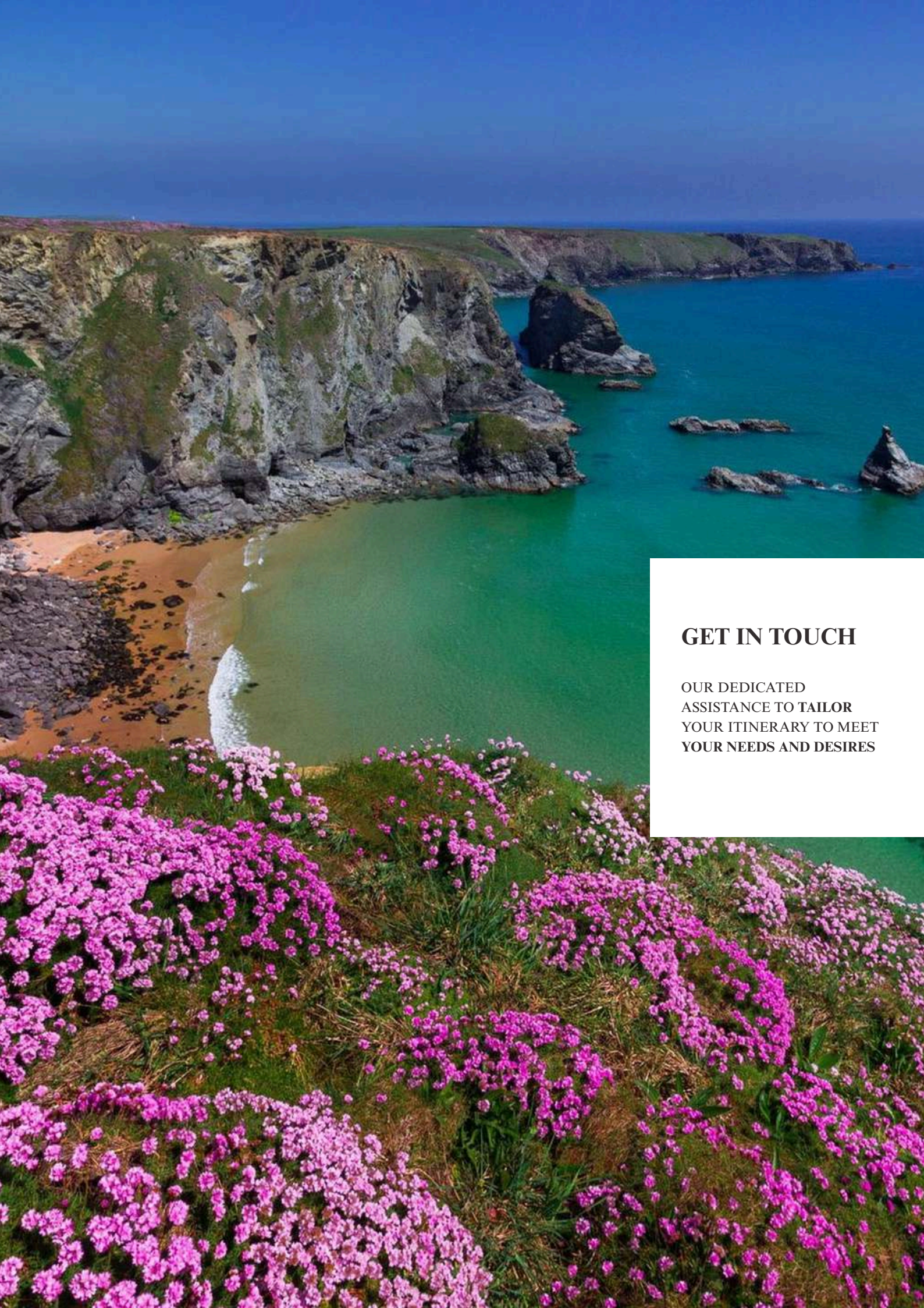
PRE-CRUISE EXPERIENCE

Three nights in **Waterford**, a city rich in medieval history and glassmaking, including museums dedicated to crystal production and strolls along the **River Suir**. Stay in welcoming boutique hotels in the historic center, with the option of day trips to **Reginald's Tower** and **Christ Church Cathedral**, important reminders of the city's Norman past. Discover the local culinary tradition with visits to artisan markets and tastings of traditional products such as cider and Cashel Blue cheese. Explore **Mount Congreve Gardens**, a rare botanical oasis in southeastern Ireland. The first few days are punctuated by cultural visits and relaxing moments in historic cafés, while evenings offer traditional music performances in the city center's pubs. This time allows you to immerse yourself in local legends and the stories of ancient Irish navigators and writers, preparing for your journey to the sea with a profound and authentic approach to culture and nature.



REASONS TO GO

This cruise is ideal for those wishing to explore a lesser-known Ireland rich in historical and natural charm, sailing along the **River Suir** and the **Waterford** coast, lands steeped in Celtic myths and legends. You'll pass historic ports like **Youghal** and **Cobh**, renowned for their Victorian architecture and strategic ports in times gone by. You'll visit cities with medieval roots, such as **Waterford**, Ireland's oldest city, and **Lismore**, with its historic castle and botanical gardens. You'll experience local life, blending tradition and modernity, with visits to the homes of writers like **John Millington Synge** and **Edna O'Brien**, key figures in Irish literature, and participation in storytelling workshops that transform the journey into a profound cultural experience. Nature excursions along the mouth of the **Blackwater** offer unique opportunities to observe the river's biodiversity and wildlife, particularly waterfowl. On board, expert guides and the comfort of small vessels make for an accessible and engaging journey for all. It's a journey that combines literature, nature, and history, ideal for those seeking intimate contact with authentic Ireland, away from the beaten tourist track.



GET IN TOUCH

**OUR DEDICATED
ASSISTANCE TO TAILOR
YOUR ITINERARY TO MEET
YOUR NEEDS AND DESIRES**

SUPPORT INQUIRY



HONEYMOONS

FORM



ANNIVERSARIES

FORM



DISABLED INDIVIDUALS
AND GROUPS

FORM



SENIORS INDIVIDUALS
AND GROUPS

FORM



STUDENTS INDIVIDUALS
AND GROUPS

FORM



INDIVIDUALS, COUPLES,
FAMILIES, GROUPS

ATLANTIC CLASSIC BASIC

ATLANTIC TRAVELERS CLUB

STEPS TO JOIN

- IF YOU FALL INTO THE CATEGORY OF **SPECIAL TRAVELERS (HONEYMOONS, ANNIVERSARIES, DISABLED, SENIORS, STUDENTS)** PLEASE DO NOT HESITATE TO CLICK THE APPROPRIATE BUTTON, COMPLETE THE FORM, AND SUBMIT IT. YOU WILL RECEIVE ACCESS TO ENTIRELY **COMPLIMENTARY** SUPPORT.
- ON THE CONTRARY, IF YOU ARE **SINGLE, A COUPLE, A FAMILY, OR A GROUP** SEEKING ASSISTANCE, WE ENCOURAGE YOU TO **SELECT ONE OF THE TWO PAID OPTIONS: "ATLANTIC CLASSIC BASIC" OR "ATLANTIC TRAVELERS CLUB."**



ATLANTIC CLASSIC BASIC

It does not include any type of club or related benefits but only the classic tailor-made travel itinerary and quotation preparation service. In this case, to receive the above, you will have to proceed following the instructions indicated in the sub-heading "Steps to Follow".

QUOTATION FEE

- For US based customers \$15.00
- For UK based customers £15.00
- For EU based customers €15.00
- For Canada based customers Can\$ 25.00
- For Australia based customers AU\$ 28.00

If, after you have received our itinerary and tailor-made quotation, you decide not to proceed with the booking, the quotation fee is non-refundable but we will do everything possible to help you find the best travel solution.

STEPS TO FOLLOW

1) If you need to request a travel itinerary and quotation, click on the button below. Fill out and submit the relevant form.

[REQUEST A QUOTE](#)

2) Click on the image relating to your country of residence and you will be able to finalize the process of paying for the quote by credit/debit card via PayPal by following the various steps that will be indicated.



3) In a short time, you will receive your travel itinerary and quotation from one of the partner agencies, Atlantic Travel & Tours Booking Point Agency, located in the country where you live, to which you can also ask to modify / adjust your travel itinerary.



ATLANTIC TRAVELERS CLUB

A club open to all but mainly frequent travellers that opens the doors to the following benefits:

- Request unlimited itineraries and quotes without paying the Atlantic Classic Basic quote fee every time
- 20% discount always active for all inclusive travel
- Assistance before / during / after the travel
- Constant updates concerning the travel industry
- Discounts and gifts based on availability

MONTHLY MEMBERSHIP FEE

- For US based customers \$9.00
- For UK based customers £9.00
- For EU based customers €9.00
- For Canada based customers Can\$ 16.00
- For Australia based customers AU\$ 17.00

To join our Atlantic Travellers Club, follow the instructions indicated in the sub-heading "Steps to Follow".

You can cancel your membership at any time by writing to us by email.

STEPS TO FOLLOW

1) Click on this button and you will be able to access membership form to fill in and send.

MEMBERSHIP

2) Click on the image relating to your country of residence and you will be able to finalize the payment process of the monthly membership fee by credit/debit card via PayPal by following the various steps that will be indicated.



3) In a short time, you will receive welcome confirmation and you will be able to start enjoying the benefits described above.

4) Remember that you can request itineraries and quotes at any time by clicking on the button below. Fill out and submit the relevant form.

REQUEST A QUOTE



Atlantic Travel & Tours Ltd

London, New York
Los Angeles, Miami
Denver

ATLANTIC TRAVEL & TOURS LTD

HEADQUARTERED IN THE UNITED STATES AND THE UNITED KINGDOM

REGISTERED COMPANIES

USA - DENVER - COLORADO - COMPANY REGISTRATION NUMBER: 202 110 96 014

UK - LONDON - COMPANY REGISTRATION NUMBER: 130 288 33

E-MAIL

USA - unitedstatesadministration@atlantictourstravel.com

UK - unitedkingdomadministration@atlantictourstravel.com

WEBSITE

www.visitatlantictraveltours.com

FULL CONTACT DETAILS

www.visitatlantictraveltours.com/contact