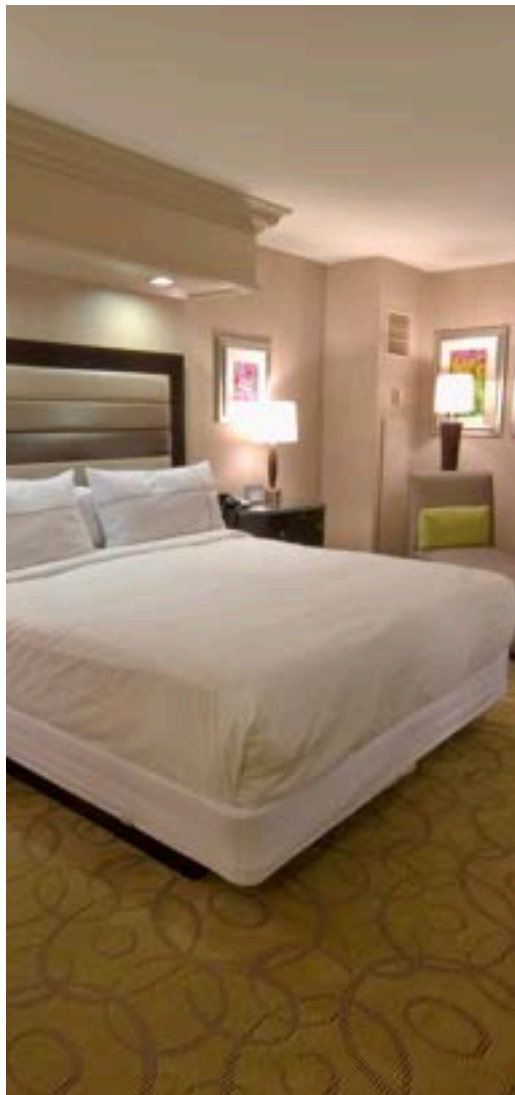


**ATLANTIC TRAVEL & TOURS**  
**BUSINESS TRAVEL**

**INSPIRATIONAL  
BROCHURE**



**SEYCHELLES - MAURITIUS-  
ZANZIBAR - MALDIVES**

**[WWW.VISITATLANTICTRAVELTOURS.COM](http://WWW.VISITATLANTICTRAVELTOURS.COM)**

## FROM THE CEO

---

Dear travelers,

We are thrilled to introduce Atlantic Travel & Tours, a tour operator specializing in tailor-made MICE travel to Seychelles, Mauritius, Zanzibar, and the Maldives. Our mission is to transform every corporate event, incentive, conference, and meeting into a memorable experience, combining **professionalism, creativity, and attention to detail**.

Thanks to our **many years of experience**, we collaborate with a select network of suppliers—prestigious hotels, state-of-the-art conference centers, reliable transportation companies, and charming accommodations—to offer **flawless logistics solutions tailored to your needs**. Whether you're planning an intercontinental summit, a roadshow, a product launch, or a team building program, our team can manage **every** aspect: from **planning** to **execution**, from **transportation** to **entertainment**, always keeping an eye on your **budget** and business **objectives**.

Choosing Atlantic Travel & Tours means accessing a strategic partner that puts **your satisfaction first**. Our quality of work is driven by **precision, flexibility**, and a **passion** for hospitality. We will be by your side through every phase of the project: **initial brainstorming, logistics, on-site support, final follow-up, and results analysis**.

We look forward to working together to create unique and effective MICE trips. We remain at your complete disposal for an initial meeting, either virtual or in person, to plan your next success together.



*Steve Tabacchi*

DR. STEVE TABACCHI  
CEO - FOUNDER  
ATLANTIC TRAVEL & TOURS

# WHY GO TO THE SEYCHELLES, MAURITIUS, ZANZIBAR AND THE MALDIVES FOR MICE

## FOUR ISLANDS, FOUR WORLDS – A UNIQUE JOURNEY THROUGH NATURE, CULTURE, AND STRATEGY

In the heart of the Indian Ocean, four extraordinary pearls offer themselves to the MICE world with distinct personalities but a common soul: primordial beauty, authentic hospitality, and a pace that invites focus and connection. Seychelles, Mauritius, Zanzibar, and the Maldives are much more than tropical paradises: they are creative platforms for events that seek to regenerate, motivate, and inspire. Each island tells a different story, but all offer a perfect blend of refined hospitality, tailored services, and iconic locations to transform a corporate trip into a memorable experience.

## INCENTIVES AND TEAM BUILDING BETWEEN NATURE, WELL-BEING AND AUTHENTICITY

Catamaran sailings to uninhabited islands, trekking through tropical forests, relaxing walks overlooking the ocean, workshops with local artisans, exotic cooking classes, sustainability workshops, or socially impactful community activities. Each destination offers immersive experiences that strengthen team spirit, fuel creativity, and foster moments of true connection.

## COMPARISON OF DESTINATIONS: DIFFERENT EMOTIONS, SAME LEVEL OF EXCELLENCE

- **Seychelles – Natural and sustainable luxury:** A timeless archipelago, where ancient granite rocks, white beaches, and unique biodiversity offer the perfect backdrop for strategic **retreats** and **gatherings** seeking peace and quiet. From Mahé to Praslin and La Digue, each island invites you to experience the essential.
- **Mauritius – A cultural mosaic and exceptional hospitality:** A melting pot of Africa, Asia, and Europe, blending colors, flavors, and stories. Ideal for dynamic **incentives**, multisensory corporate **events**, and **workshops** where diversity becomes added value. The perfect combination of comfort, efficiency, and charm.
- **Zanzibar – Swahili soul and vibrant authenticity:** An island bursting with human energy and vibrant culture, where every alleyway, spice, and sunset offers an opportunity for profound connection. Ideal for small groups, creative **retreats**, and inclusive formats. The atmosphere is warm, welcoming, and authentic.
- **Maldives – Rare elegance and introspection:** An icon of barefoot luxury, the Maldives is the ideal choice for ultra-exclusive **board meetings**, high-profile award trips, and integrated wellness programs. Private island resorts offer absolute privacy, meticulously curated spaces, and intimate contact with the ocean.

## EXCELLENT HOSPITALITY AND A LOCATION WITH A STRONG PERSONALITY

Each island offers a unique mix of exclusive resorts, sustainable eco-lodges, private villas, boutique hotels, and historic venues reinvented for the MICE industry. From pristine beaches to tropical gardens, from overwater piers to terraces surrounded by palm trees and stars, the event spaces are atmospheric and managed to the highest standards. The growing focus on sustainability, human connection, and integrated well-being ensures that every experience leaves a lasting impression on attendees.





CANADA	CAD	0.9512
CHINA	CNY	7.3169
EURO	EUR	0.6644
JAPAN	JPY	109.00
SINGAPORE	SGD	1.3712
HONG KONG	HKD	7.0043
NEW ZEALAND	NZD	1.1646
MYR		3.2536



## ANCILLARY SERVICES

**We can assist with visa arrangements, currency exchange, advance luggage shipment, work materials, and insurance policies for cancellation, lost baggage, and medical care**



# CHARTER FLIGHTS

## REASONS TO USE THEM

Charter flights are private or semi-private flights rented specifically for specific needs, such as business trips, corporate events, or group transportation. They are widely used by companies seeking flexibility, time savings, and comfort.

- Flexibility to decide on times and airports (even the less busy ones)
- Save time: No queues, long checks and waits at commercial airports
- Privacy and comfort: Perfect for working or meeting on board
- Access to secondary airports: Often closer to business destinations

Book your charter flight now with our support and experience the difference!



# SEYCHELLES

## A DESTINATION THAT REGENERATES MIND AND RELATIONSHIPS

The Seychelles are a timeless archipelago: granite and coral islands immersed in a pristine ecosystem, where every detail inspires calm and creativity. Here, amidst lush forests, white beaches, and nature reserves, MICE events transform into profound moments of listening, vision, and connection. The unique biodiversity and primordial beauty make every experience memorable and transformative, ideal for those seeking authenticity, exclusivity, and profound regeneration.

## ACCESSIBILITY AND HOSPITALITY

Accessible via international flights to Mahé and fast domestic connections to Praslin or La Digue, the Seychelles offer high-end accommodations immersed in nature. Air Seychelles, the national airline, guarantees efficient connections from international hubs and offers services designed for corporate groups: Business Class comfort, priority boarding, and flexible solutions for transporting teams and materials. On the ground, boutique hotels, eco-resorts, and exclusive lodges focus on sustainability and well-being, with staff accustomed to working with corporate clients. Discreet yet impeccable MICE services include meeting spaces immersed in nature, personalized assistance, specialized local teams, and incentive programs tailored to specific company needs.

## ACTIVITIES THAT RECONNECT

Team-building sessions in marine reserves, hiking among endemic palms and giant tortoises, workshops in eco-lodges suspended in the jungle, picnics on deserted islands, snorkeling in marine parks, dinners under the stars on private jetties. The Seychelles invite you to slow down, observe, and rediscover yourself and your team.





## **INNER SEYCHELLES – CENTRAL GRANITE ISLANDS MAHÉ, PRASLIN, LA DIGUE**

### **BETWEEN CREOLE CULTURE, LIVING INSTITUTIONS, AND ICONIC LANDSCAPES**

At the heart of the archipelago, the granite islands of Mahé, Praslin, and La Digue combine spectacular tropical landscapes with a vibrant cultural and institutional dimension. The capital, Victoria, is home to embassies, museums, university campuses, and international cooperation centers. Endemic forests and legendary beaches coexist with historic neighborhoods and local markets. It is the most dynamic area in the Seychelles: perfect for MICE events, training programs, educational trips, and institutional initiatives in scenic and accessible settings.

### **ACCESSIBILITY AND HOSPITALITY**

The international airport is located on Mahé, well connected by ferry or domestic flight to Praslin and La Digue. The area boasts high-end facilities—business hotels, conference centers, and boutique hotels—alongside local businesses committed to sustainability. Excellent logistical support is available, even for large or mixed groups.

### **EXPERIENCES THAT INSPIRE AND UNITE**

Workshops in botanical gardens or Creole palaces, institutional meetings among tropical gardens, visits to UNESCO sites like the Vallée de Mai or local cultural foundations. Mixed programs with marine and forest experiences are also possible, balancing rigor, beauty, and collaboration.

### **THE IDEAL SEASONS FOR EVERY TYPE OF EVENT**

- **Spring (March–May):** institutional seminars, educational trips, regional MICE
- **Summer (June–August):** summer schools, green conferences, outdoor training
- **Autumn (September–November):** thematic workshops, multilateral programs, environmental forums
- **Winter (December–February):** strategic retreats, international meetings, team building



## **INNER SEYCHELLES – OUTER GRANITE ISLANDS FELICITÉ, COUSIN, CURIEUSE**

### **BETWEEN NATURE RESERVES, ECOLOGICAL INTIMACY AND SENSORY TRANSFORMATION**

The smaller islands around the central heart of the archipelago are small worlds unto themselves: nature reserves, protected atolls, and eco-resorts surrounded by pristine vegetation. Here, you live in close contact with nature and marine biodiversity, far from urban hustle and bustle. Ideal for immersive experiences, creative retreats, and slow itineraries for small groups seeking depth, listening, and regeneration, the islands become settings for sensory learning, cohesion, and reconnection.

### **ACCESSIBILITY AND HOSPITALITY**

Accessible from Praslin or Mahé via short boat or helicopter transfers, accommodations are limited and select: ecolodges, guesthouses run by NGOs, and small, charming resorts. Hospitality is rooted in the landscape, ideal for small groups, offering exclusive formats and sustainable events.

### **EXPERIENCES THAT INSPIRE AND UNITE**

Wildlife observation workshops with local guides, sensory experiences in the coastal forest, days without electricity in scientific reserves, participatory conservation projects. Creative nature-inspired itineraries, including art, design, and ecological storytelling, are also available.

### **THE IDEAL SEASONS FOR EVERY TYPE OF EVENT**

- **Spring (March–May):** artist residencies, outdoor training, eco-workshops
- **Summer (June–August):** regenerative group trips, team retreats, eco-friendly itineraries
- **Autumn (September–November):** listening practices, interdisciplinary seminars, immersive experiences
- **Winter (December–February):** symbolic itineraries, nature observation, nature writing



## **OUTER SEYCHELLES – SOUTHERN CORAL ISLANDS - ALDABRA, ALPHONSE, FARQUHAR**

### **BETWEEN OPEN OCEANS, EXTREME BIODIVERSITY, AND SCIENTIFIC SILENCE**

The southern coral islands of the Seychelles are remote, wild, and essential. Aldabra—a UNESCO atoll—is among the most intact ecosystems on the planet, while Alphonse and Farquhar are home to rare scientific projects and resorts dedicated to conservation. Here, time shifts scale and the experience becomes total: ideal locations for academic expeditions, environmental missions, high-level training activities, and journeys of inner exploration. Where the landscape becomes an active part of thought.

### **ACCESSIBILITY AND HOSPITALITY**

Access is via charter flights from Mahé or private boats. Facilities are sparse and limited: research bases, equipped camps, and scientific ecolodges. Logistical support is provided by public agencies or environmental foundations. Traveling here requires planning and an openness to change.

### **EXPERIENCES THAT INSPIRE AND UNITE**

Academic residencies in protected areas, citizen science projects, dives with marine biologists, and slow reflections in oceanic settings. Each activity has a strong educational value, both scientifically and humanly. Here, we work on the threshold: between knowledge and wonder.

### **THE IDEAL SEASONS FOR EVERY TYPE OF EVENT**

- **Spring (March–May):** scientific missions, interdisciplinary training, ecological observation
- **Summer (June–August):** advanced field trips, field projects, university expeditions
- **Autumn (September–November):** research residencies, long-term experiential programs
- **Winter (December–February):** climate workshops, environmental co-design, future visions



## **OUTER SEYCHELLES – NORTHERN CORAL ISLANDS DENIS, BIRD ISLAND**

### **BETWEEN ECO-LUXURY, SLOW PACE, AND VISIONS OF THE FUTURE**

The northern islands of Denis and Bird are examples of how sustainability, elegance, and vision can coexist. These quiet corners of the archipelago are home to some of the most innovative ecolodges in the Indian Ocean, in direct contact with conservation projects and local cultures. Ideal for board retreats, strategic planning, visionary meetings, and transformative trips for select teams. Here, everything is essential: quality relationships, shared time, and deep connection.

### **ACCESSIBILITY AND HOSPITALITY**

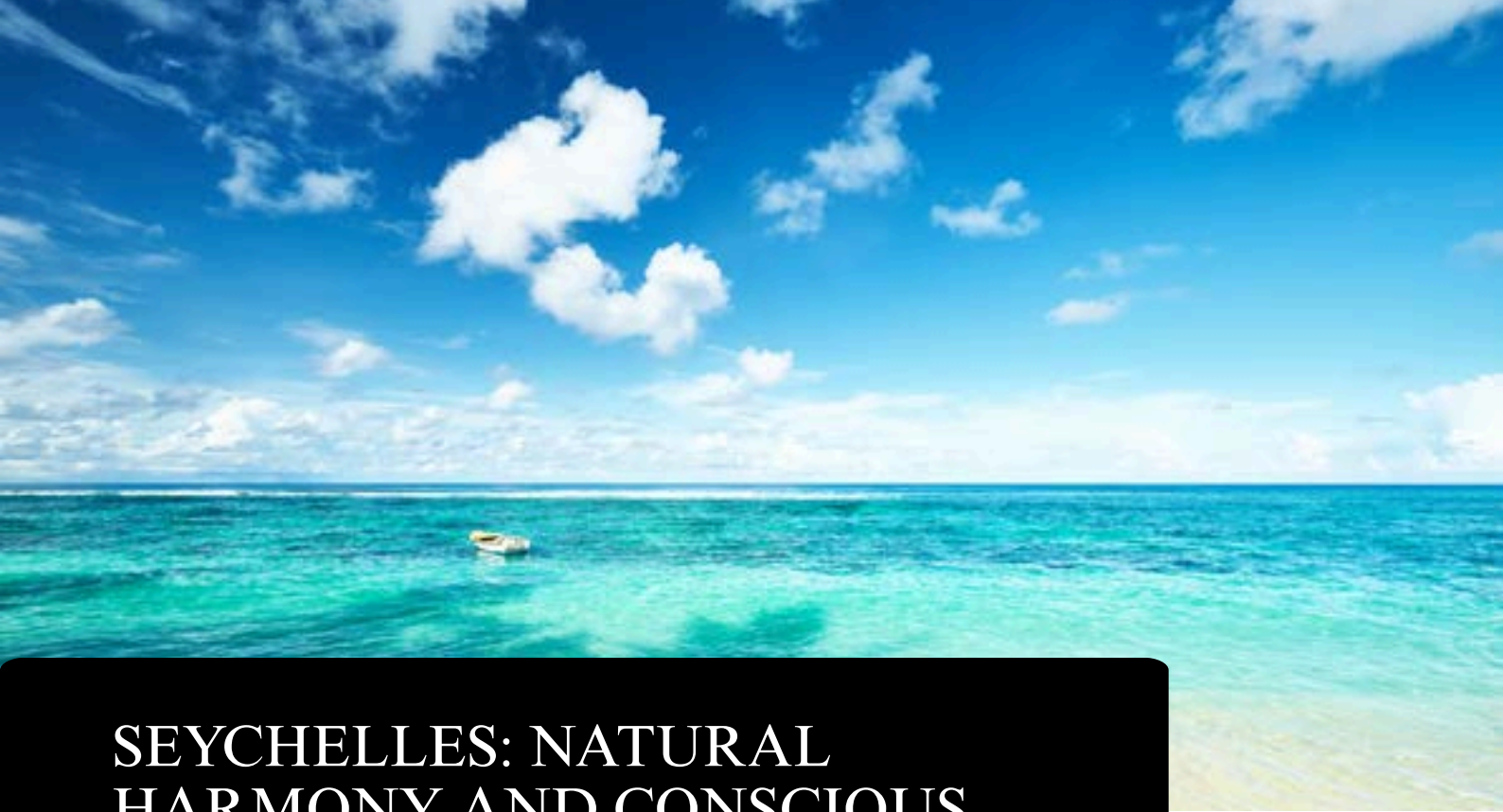
Accessible via light flights from Mahé. Hospitality is meticulously maintained, often within a single property per island. Local teams specialize in personalized hospitality, sustainable experiences, and environmental well-being. Locations suitable for small groups or leadership teams.

### **EXPERIENCES THAT INSPIRE AND UNITE**

Strategic sessions among palm trees and giant tortoises, silent walks on the beach, and reflections amidst greenery. Opportunities to participate in conservation projects or develop itineraries combining storytelling, the future, and responsibility. An ideal context for inspired decisions and new visions.

### **THE IDEAL SEASONS FOR EVERY TYPE OF EVENT**

- **Spring (March–May):** leadership retreat, strategic vision, decision-making processes
- **Summer (June–August):** team building trips, executive team building, sustainable micro-events
- **Fall (September–November):** international think tanks, strategy sessions, policy writing
- **Winter (December–February):** symbolic events, annual planning, creative reflection



# SEYCHELLES: NATURAL HARMONY AND CONSCIOUS LEADERSHIP

## ITINERARY – INTEGRATED MICE

### DAY 1 – MAHÉ, JARDIN BOTANIQUE, PRIVATE BEACH: GREEN IMMERSION AND OPEN-MINDEDNESS

Upon arrival in **Mahé**, the group is welcomed into an eco-resort nestled among palm trees and lush jungle, where every element exudes balance and peace. The first session takes place in a secret botanical greenhouse, enveloped in tropical scents and views of the endless sea: a perfect setting to awaken the mind and draw inspiration from pristine nature. The initial workshop leads the team through mindful leadership exercises, stimulating deep reflection. Sunset on the beach becomes the ideal starting point for shared reflections. The private dinner, illuminated by the golden light of the dying day, sparks emotional connections. The natural silence encourages listening and introspection.

### DAY 2 – PRASLIN, CURIEUSE, PRIVATE ISLAND: ISLAND HOPPING AND SHARED STRATEGIES

A morning spent on a catamaran crossing between the islands of **Praslin** and **Curieuse**, offering a slow and meditative pace. At sea, the team tackles collective challenges inspired by immersed problem solving: symbolic bridge-building exercises, creative brainstorming on the sails, and shared reflections while gazing at the horizon. Between snorkeling dives in protected reefs and contemplative breaks, the group experiments with a balance between play and structured reasoning. At sunset, a convivial dinner awaits on a remote islet, with dishes inspired by local cuisine, serving as a metaphor for nourishing shared ideas. Around the fire, voices mingle with the stars.

### DAY 3 – LA DIGUE, VEUVE RESERVE: SLOW CREATIVITY AND NATURAL DESIGN

The day begins on **La Digue**, a tranquil island reached by ferry, where the island unfolds amidst palm trees and pink sands. The group pedals through pristine natural landscapes and stops for a creative workshop: collective sculptures made with local natural materials. The afternoon culminates with a relaxing walk in the **Veuve reserve**, where the silence of the forest and the sight of endemic wildlife inspire reflection and wonder. Artistic experiences become metaphors for collaboration and sustainability. Dinner in a local village combines locally sourced dishes and authentic stories of community life.

### DAY 4 – MAHÉ FOREST, CREOLE VILLAGE: EMOTIONAL SYNERGY AND CULTURAL INNOVATION

The awakening leads to a morning session in a lodge nestled in the forest, where the team explores innovative models of strategic collaboration. A true co-creation laboratory fosters the merging of diverse visions. In the afternoon, a cooking class with local chefs transforms ingredients into metaphors for shared resources: cooking together becomes a symbol of synergy. The team activates creativity and empathy. The evening opens with live acoustic music, while reflections and sounds mingle beneath the palm trees.

### DAY 5 – BEAU VALLON, BEACHFRONT RESORT: FINAL REFLECTION AND A REFRESHED DEPARTURE

The morning begins on **Beau Vallon** beach with a relaxing walk, where every breath connects to the land, the group, and the sea. A final sharing session brings together experiences, insights, and learnings. The ocean serves as a mirror for new visions. The final lunch combines local flavors and conversations about the team's next steps. Finally, departure coincides with a promise: to take with us the calm, regenerated energy, and collective inspiration we experienced in the Seychelles.



# MAURITIUS

## AN ISLAND-CONTINENT FOR INTERCULTURAL EVENTS

Mauritius is a mosaic of cultures, languages, traditions, and landscapes: volcanic mountains, tea plantations, botanical gardens, coral beaches, and colonial architecture. A dynamic and efficient MICE destination, it combines high-level organizational expertise with refined hospitality. Here, meetings are seamless, the atmosphere harmonious, and the logistical solutions are always top-notch. The island is perfect for events that seek to foster collaboration in an inspiring and structured setting.

## ACCESSIBILITY AND HOSPITALITY

Mauritius is served by direct flights from Europe, Africa, and Asia, with Sir Seewoosagur Ramgoolam International Airport as a modern gateway. Air Mauritius, the national airline, offers an exceptional business experience: dedicated lounges, fully flat seats in Business Class, personalized group service, and logistical support for technical materials and equipment. On the ground, the wide selection of 5-star resorts, business hotels, colonial residences, and spaces immersed in nature allows for flexible and sophisticated event management. Highly qualified local suppliers and partners guarantee integrated MICE management, from airport reception to post-event services.

## ACTIVITIES THAT RECONNECT

Visits to historic homes converted into event venues, hiking among the Chamarel waterfalls, team-building activities in tea plantations, Creole cooking experiences, workshops in botanical gardens or beach villas, catamarans for nautical incentives, and art workshops in local communities. In Mauritius, every experience is a bridge between worlds.





## **MAURITIUS NORTH – GRAND BAY, CAP MALHEUREUX, PEREYBÈRE**

### **BETWEEN TROPICAL ENERGY, GLOBAL CREATIVITY AND WATER INCENTIVES**

The north of Mauritius is the island's most vibrant region: here, local dynamism, international hospitality, and a network of resorts overlooking turquoise waters meet. Grand Baie is the beating heart, a crossroads between business and relaxation, while Cap Malheureux and Pereybère offer tranquil seaside settings and the perfect backdrop for emotional events. The area is ideal for corporate incentives, motivational programs, and experiential outdoor gatherings, where the natural setting fosters deep connections and a collaborative spirit.

### **ACCESSIBILITY AND HOSPITALITY**

Reachable in one hour from the airport via direct highways, Grand Baie is home to numerous business-friendly resorts, private beach clubs, and ocean-view event venues. MICE services are well-established and adaptable: express transfers, themed catering, and tailor-made experiences for groups of all sizes.

### **EXPERIENCES THAT INSPIRE AND UNITE**

Catamaran activities, storytelling dinners on private islands, beach sports tournaments, and creative workshops in tropical gardens. Experiences with local artists, street food walks, or dance workshops followed by motivational talks by the sea are also possible.

### **THE IDEAL SEASONS FOR EVERY TYPE OF EVENT**

- **Spring (September–November):** creative incentives, corporate events, product launches
- **Summer (Dec–Feb):** motivational MICE, award trips, lifestyle experiences
- **Fall (Mar–May):** innovative workshops, team building, hybrid experiences
- **Winter (June–August):** corporate stays, light training, dynamic events



# **MAURITIUS EAST – BELLE MARE, TROU D’EAU DOUCE, ÎLE AUX CERFS**

## **BETWEEN NATURAL REFINEMENT, CORPORATE QUIET AND SENSORY DESIGN**

The east coast is the most elegant and relaxed: here the island opens up to clear lagoons, marine gardens, and resorts nestled among palm trees. Belle Mare offers a serene setting for strategic reflection, while Trou d’Eau Douce and Île aux Cerfs enchant with secluded beaches and tranquil views. A perfect setting for executive retreats, boutique events, creative residencies, and strategic meetings immersed in natural beauty.

## **ACCESSIBILITY AND HOSPITALITY**

Approximately 1 hour and 20 minutes from the airport. The area is home to 5-star resorts with private lounges and beach offices, islands available for exclusive rental, and spas designed for small groups. Hospitality is discreet, personalized, and integrated into the landscape.

## **EXPERIENCES THAT INSPIRE AND UNITE**

Listening and decision-making sessions on the beach, slow navigation through mangroves, strategic yoga at dawn, and curated picnics on private islands. Opportunities for local storytelling, meetings with master craftsmen, and business vision workshops.

## **THE IDEAL SEASONS FOR EVERY TYPE OF EVENT**

- **Spring (September–November):** board retreat, corporate planning, exclusive MICE
- **Summer (Dec–Feb):** immersive events, personalized itineraries, micro-conferences
- **Fall (Mar–May):** team leadership, creative design, learning journeys
- **Winter (June–August):** visioning sessions, executive tours, tropical coworking



## **MAURITIUS SOUTH – BEL OMBRE, GRIS GRIS, LE MORNE**

### **BETWEEN WILD NATURE, DEEP IDENTITY AND SLOW TRANSFORMATIONS**

Southern Mauritius is the island's most authentic and natural side: mountainous landscapes, cliffs, rivers, and villages where time still moves slowly. Le Morne, a UNESCO World Heritage Site, tells stories of freedom and resistance. Bel Ombre and Gris Gris are ideal destinations for immersive events, educational trips, cultural retreats, and initiatives that intertwine nature, memory, and thought. A perfect setting for thinking differently.

### **ACCESSIBILITY AND HOSPITALITY**

About an hour and a half from the airport. Eco-friendly facilities, historic lodges, and sustainable hotels offer spaces for workshops, listening circles, and experiential learning. The area is well-connected yet secluded, perfect for small groups.

### **EXPERIENCES THAT INSPIRE AND UNITE**

Reflective walks on Le Morne, storytelling workshops in the forest, and local learning days with fishermen and farmers complete the experience. Ethnographic excursions, biodiversity observation, and immersion in Creole cuisine complete the experience.

### **THE IDEAL SEASONS FOR EVERY TYPE OF EVENT**

- **Spring (September–November): educational programs, hybrid learning, social events**
- **Summer (Dec–Feb): team building in nature, experiential storytelling**
- **Autumn (Mar–May): cultural retreats, interdisciplinary travel, slow learning**
- **Winter (June–August): ecological explorations, field workshops, human development**



## **WEST MAURITIUS – FLIC-EN-FLAC, TAMARIN, CHAMAREL**

### **BETWEEN OCEANIC DYNAMISM, ACTIVE NATURE AND OFF-ROUTE ENCOUNTERS**

The west coast combines energy, versatility, and spectacular scenery: sporty beaches, tropical forests, salt marshes, waterfalls, and artistic villages. Flic-en-Flac is perfect for outdoor activities, Tamarin is a surfing paradise, and Chamarel is a creative valley among plantations and colorful earth. It's an ideal location for active events, creative experiences, team building in nature, and innovative itineraries combining adventure and reflection.

### **ACCESSIBILITY AND HOSPITALITY**

About an hour from the airport. Numerous versatile resorts, glamping sites, eco-lodges, and hotels with meeting rooms and outdoor spaces. Widely used by companies for incentives and informal workshops, with excellent logistics services.

### **EXPERIENCES THAT INSPIRE AND UNITE**

Photographic safaris, surf management, Creole cooking challenges, strategic trekking, resilience workshops, and landscape storytelling. You can work in the forest or on open beaches, with workshops tailored to the local area.

### **THE IDEAL SEASONS FOR EVERY TYPE OF EVENT**

- **Spring (September–November): dynamic events, group experiences, outdoor training**
- **Summer (Dec–Feb): incentive travel, mixed business-adventure events**
- **Autumn (Mar–May): creative itineraries, eco-events, innovative workshops**
- **Winter (June–August): soft training, active leadership, nature coaching**



# **MAURITIUS OUTER ISLANDS – RODRIGUES, AGALEGA, SAINT BRANDON**

## **BETWEEN DISTANT ISLANDS, SOCIAL RESEARCH AND RESILIENT CULTURES**

The outer islands of Mauritius are distant worlds, where modernity gives way to the essential. Rodrigues has its own identity, artisanal and resilient. Agalega and Saint Brandon are more isolated, places for special projects, environmental study, and deep listening. They are ideal territories for cultural expeditions, educational missions, slow-paced residencies, and projects co-created with communities.

## **ACCESSIBILITY AND HOSPITALITY**

Rodrigues is accessible by domestic flights (1.5 hours). The other islands require charter flights or long-distance boats. Simple accommodations, rural hospitality, or research bases. Every arrival is part of the journey itself, every encounter is a genuine exchange.

## **EXPERIENCES THAT INSPIRE AND UNITE**

Social workshops, exchanges with local schools, field studies on biodiversity or oral traditions. Low-impact workshops, active community listening, and collective reflection processes. Spaces for "doing nothing" and profound regeneration.

## **THE IDEAL SEASONS FOR EVERY TYPE OF EVENT**

- **Spring (September–November):** educational trips, social workshops, inclusive design
- **Summer (Dec–Feb):** cultural expeditions, collective storytelling, case studies
- **Autumn (Mar–May):** co-design, international networks, sustainable missions
- **Winter (June–August):** long retreats, environmental study, regenerative processes



# MAURITIUS: CULTURAL FUSION AND DYNAMIC LEADERSHIP

## ITINERARY – INTEGRATED MICE

### **DAY 1 – PORT LOUIS, COLONIAL VILLA, TROPICAL GARDEN: STORIES INTERTWINED IN THE COLONIAL VILLA**

The team arrives in **Port Louis** and gathers in an elegantly restored period villa, surrounded by exotic gardens. A welcome dinner brings together flavors and stories of the island's cultural mosaic, sparking reflections on openness and adaptability. Guests and facilitators alternate voices, generating a lively dialogue between past and present. The colonial setting becomes a metaphor for intercultural leadership and the value of diversity. Each dish becomes a bridge between roots and a shared future. The evening atmosphere blends elegance and authentic conversation, building a climate of trust.

### **DAY 2 – CHAMAREL, BLUE BAY, MANGROVES: EVOCATIVE NATURE AND SUSTAINABLE THINKING**

Amidst the chromatic magic of **Chamarel**, amidst sugarcane fields and the multicolored landscape of the **Seven-Colored Land**, the group engages in team-building activities focused on environmental resilience and cohesion. Each stop evokes a shared value. The afternoon passes with kayaking among the mangroves of **Blue Bay**, where exercises in trust and synchronization encourage the group to discover the unity between nature and collaboration. The sunset over the sea becomes a reflection on sustainable rhythms. The evening brings tastings and discussions inspired by local stories, celebrating the island's identity.

### **DAY 3 – CUREPIPE, BOTANICAL GARDEN, GRAND BAIE: DESIGN, ART, AND SHARED VISIONS**

In the heart of **Curepipe**, a contemporary weaving workshop fosters cultural creativity and strategic thinking: the group transforms traditional fabrics into cohesive visual narratives. In the botanical garden, a strategy session reimagines visions in a regenerating natural setting. The afternoon is dedicated to immersive brainstorming beneath palm trees and rare flowers. Dinner in **Grand Baie**, accompanied by a sega music performance, combines sensory experience, local culture, and networking: the island's energy becomes fuel for new ideas.

### **DAY 4 – LE MORNE, HISTORIC DISTILLERY, LOCAL VILLAGE: MINDFUL MOVEMENT AND LOCAL ROOTS**

The group wakes up to the majestic dunes of **Le Morne**, where mindful movement and energy coaching activities foster centering and physical responsibility. In the afternoon, a visit to a rum distillery intertwines flavors, storytelling, and branding, focusing on corporate identity. The day concludes with an evening of rhythm and conviviality: traditional dance, light presentations, and shared reflections under the stars, in a natural and vibrant setting.

### **DAY 5 – BELLE MARE, PRIVATE BEACH, ECO RESORT: CALM, UNITY AND NEW ENERGY**

Amidst the white sand and warm waves, the group participates in outdoor feedback sessions, relaxing walks, and inspiring conversations. **Belle Mare** beach becomes a stage for new projects and collective visions, where every idea is reborn from the calm of the landscape. The final lunch is a moment of celebration centered on the values that emerged and the drive for change. Upon returning, each participant brings with them a renewed perspective, ready to be translated into concrete action.



# Z A N Z I B A R

## A N I S L A N D T H A T T E L L S , P E R F U M E S A N D I N S P I R E S

Zanzibar is a sensory experience even more than a geographical one. The aroma of spices, the Swahili music, the dhows plying the sea, the stones of Stone Town: every detail tells a story. For MICE events, it's a destination that awakens the imagination and invites you to slow down. Here, we work with a different spirit: connected to culture, immersed in nature, inspired by authenticity.

## A C C E S S I B I L I T Y A N D H O S P I T A L I T Y

Zanzibar International Airport is steadily growing and offers direct flights from Europe, the Middle East, and African hubs. The national airline, Precision Air, offers comfortable business class with spacious seats, dedicated catering, and priority boarding and check-in, ideal for corporate groups on incentive trips or for intercontinental meetings. On the ground, the offerings range from beachfront boutique hotels to eco-luxury lodges and historic buildings. Local suppliers have gained solid experience in the MICE segment, offering tailor-made formats in distinctive locations, with expert staff, adaptable audiovisual services, fusion catering, and the ability to customize every logistical detail.

## A C T I V I T I E S T H A T R E C O N N E C T

Swahili cooking workshops in the villages, spice tours with sensory storytelling, eco-lodge retreats among baobabs and palm trees, snorkeling in uninhabited atolls, team building on a traditional boat, photography workshops in the alleys of Stone Town, relaxing sunset strolls. Zanzibar is an invitation to slow down and feel.





## **ZANZIBAR NORTH – NUNGWI, KENDWA, MATEMWE**

### **AMONG TURQUOISE WATERS, LEGENDARY SUNSETS AND UNFILTERED INCENTIVES**

Northern Zanzibar is pure energy: pristine white beaches, vibrant villages, and seemingly endless sunsets. Nungwi and Kendwa exude a casual yet captivating atmosphere, ideal for motivational events and dynamic group gatherings. The area is perfect for reward trips, emotional incentives, and barefoot team building. Here, every activity becomes a shared experience, amplified by a landscape that invites you to let go and connect. The balance between authenticity and comfort makes the north the experiential heart of the island.

### **ACCESSIBILITY AND HOSPITALITY**

Approximately 1.5 hours by transfer from Zanzibar Airport. The beachfront resorts offer open-air lounges, private beaches for events, and integrated logistics. A wide selection of restaurants, beach clubs, and experienced local MICE operators are available. Sea excursions, musical events, and themed dinners are available. The area is highly accessible, even for large groups.

### **EXPERIENCES THAT INSPIRE AND UNITE**

Traditional dhow regattas, sunset dinners on the beach, Swahili cooking challenges, and collaborative games among the palm trees. Storytelling tours through fishing villages and CSR activities with local communities. Dynamic workshops on panoramic terraces or right on the sand.

### **THE IDEAL SEASONS FOR EVERY TYPE OF EVENT**

- **Spring (Mar–May): incentives, motivational trips, immersive workshops**
- **Summer (June–August): lifestyle events, seaside team building, creative experiences**
- **Autumn (September–November): company retreats, emotional events, informal leadership**
- **Winter (Dec–Feb): outdoor group meetings, product launches, celebrations**



## **ZANZIBAR EAST – PAJE, JAMBIANI, MICHAMVI**

### **BETWEEN SILENT BEACHES, DEEP REGENERATION AND NEW VISIONS**

The east coast of Zanzibar is silent, open, and expansive. Here, the ocean changes hourly, the light is rarefied, and the atmosphere invites listening and reflection. Paje and Jambiani are home to eco-resorts and creative centers offering retreats, residencies, and transformative programs. The east is ideal for those seeking spaces for fluid thinking, planning, and working. Meetings shift between the studio and the sand, and each day is marked by the rhythm of the water and the Indian Ocean wind.

### **ACCESSIBILITY AND HOSPITALITY**

About 1 hour and 45 minutes from the airport. The resorts and boutique hotels offer discreet hospitality, with unconventional workspaces: platforms on the water, regenerative common areas, and natural co-working spaces. Ideal for small and medium-sized groups seeking concentration, well-being, and creativity.

### **EXPERIENCES THAT INSPIRE AND UNITE**

Relaxation, vision workshops, oceanside encounters, and regenerative walks at low tide. Sustainability workshops, excursions with coastal communities, and experiential storytelling in Swahili villages. Ideal for highly immersive retreats.

### **THE IDEAL SEASONS FOR EVERY TYPE OF EVENT**

- **Spring (Mar–May):** immersive training, corporate regeneration, thematic workshops
- **Summer (June–August):** creative retreats, wellness programs, corporate visioning
- **Fall (September–November):** team leadership, co-design, interdisciplinary meetings
- **Winter (Dec–Feb):** planning activities, 2025+ vision, strategic coworking



## **ZANZIBAR SOUTH – KIZIMKAZI, MAKUNDUCHI**

### **AMONG DOLPHINS, FISHING VILLAGES AND RETREATS AWAY FROM THE SPOTLIGHT**

Southern Zanzibar is simple, authentic, and remote. In Kizimkazi, traditional boats coexist with dolphins, and the rhythm of life is marked by the ocean. Makunduchi tells stories of agriculture, Swahili traditions, and spirituality. A perfect place for light-hearted projects, educational missions, and training programs connected to the local area. Ideal for groups seeking meaning, sustainability, and deep learning. A Zanzibar off the beaten track, yet rich in humanity and meaning.

### **ACCESSIBILITY AND HOSPITALITY**

About a 1.5-hour drive from the airport, on quieter roads. Simple and authentic hospitality: small ecolodges, guesthouses, and base camps for specialized work groups. Perfect for slow events, cultural immersions, or long-term stays.

### **EXPERIENCES THAT INSPIRE AND UNITE**

Dolphin-watching excursions, shared fishing trips, meetings with local artisans, and workshops on Swahili traditions. Collective reflection activities and listening circles in rural settings for small, high-impact groups.

### **THE IDEAL SEASONS FOR EVERY TYPE OF EVENT**

- **Spring (Mar–May): study trips, slow learning initiatives, educational projects**
- **Summer (June–August): cultural workshops, CSR days, listening sessions**
- **Autumn (September–November): regenerative activities, social co-planning**
- **Winter (Dec–Feb): long retreats, relational workshops, field research**



## **ZANZIBAR WEST – STONE TOWN, MANGAPWANI**

### **BETWEEN HISTORICAL ARCHITECTURE, INTERTWINED CULTURES AND URBAN ENCOUNTERS**

The West is historic Zanzibar, made of stone, aromas, languages, and influences. Stone Town is a UNESCO World Heritage Site where Africa, Arabia, India, and Europe intertwine in a unique urban mosaic. Institutional events, cultural conferences, and historical and intercultural workshops are held here. A few kilometers away, Mangapwani offers tranquil retreats among caves, plantations, and panoramic views of the Zanzibar Channel. A perfect balance between urbanity and reflection.

### **ACCESSIBILITY AND HOSPITALITY**

Stone Town is 10–15 minutes from the airport. Excellent accessibility, business-friendly hotels, historic conference venues, museums, and cultural centers. Ideal for cultural, academic, and institutional events, and field research trips.

### **EXPERIENCES THAT INSPIRE AND UNITE**

Guided walks through the old city, market visits, and storytelling sessions on architecture and memory. Events in historic buildings, Swahili cooking workshops, and meetings with local intellectuals and activists. Experiences that connect thought and life.

### **THE IDEAL SEASONS FOR EVERY TYPE OF EVENT**

- **Spring (Mar–May):** cultural conferences, urban education, academic projects
- **Summer (June–August):** international exchanges, educational trips, storytelling workshops
- **Autumn (September–November):** institutional events, cultural networks, exhibitions, and symposia
- **Winter (Dec–Feb):** storytelling, interdisciplinary seminars, city retreat



## **ZANZIBAR MINOR ISLANDS – MNEMBA, CHUMBE, PRISON ISLAND**

### **AMONG NATURAL MICROCOSMS, PROTECTED BIOSPHERES AND EXCLUSIVE EVENTS**

The small islands around Unguja are natural treasures perfect for exclusive experiences. Mnemba is a private reserve, marine sanctuary, and refuge for small groups. Chumbe is an example of extreme sustainability, and Prison Island speaks of memory and biodiversity. Ideal for bespoke events, highly symbolic gatherings, ecological workshops, and design projects in pure and select environments.

### **ACCESSIBILITY AND HOSPITALITY**

Accessible only by boat (20–45 minutes from Zanzibar Town). Limited and highly curated services. Specialized hospitality, local staff, and off-grid environments. Small-scale events are available by reservation only. Perfect for think tanks, high-level retreats, or immersive experiences.

### **EXPERIENCES THAT INSPIRE AND UNITE**

Regenerative snorkeling, field environmental analysis, symbolic walks, and silent collective planning. Educational visits to reserves, sustainability workshops, and contemplative practices. Each experience offers added depth.

### **THE IDEAL SEASONS FOR EVERY TYPE OF EVENT**

- **Spring (Mar–May):** environmental retreats, rare educational trips, holistic training
- **Summer (June–August):** sustainability, environmental leadership, and experiential CSR workshops
- **Fall (September–November):** strategy sessions in nature, selected team buildings
- **Winter (Dec–Feb):** targeted cultural projects, exclusive meetings, vision seminars



## **ZANZIBAR PEMBA – CHAKE CHAKE, WETE, MISALI**

### **BETWEEN SACRED FORESTS, INTACT WATERS AND PARALLEL CULTURES**

Pemba is the other Zanzibar: green, deep, agricultural, and untouched by tourism. Its forests, like Ngezi, are living myths, and the villages are resilient communities tied to the land. Misali is a remote marine paradise. The island is perfect for academic missions, field projects, interdisciplinary events, and deeply connected activities. A cultural frontier to be explored with respect and care.

### **ACCESSIBILITY AND HOSPITALITY**

Accessible by domestic flight (Zanzibar–Pemba) or ferry. Few accommodations, often eco-oriented or community-based. Research centers and social organizations are present. Ideal for small groups, educational events, and residencies.

### **EXPERIENCES THAT INSPIRE AND UNITE**

Forest workshops, meetings with cooperatives, marine explorations, community reflections. Field research, sustainable development, and co-creation with local stakeholders. Pemba demands slowness and restores intensity.

### **THE IDEAL SEASONS FOR EVERY TYPE OF EVENT**

- **Spring (Mar–May): field study, cultural co-design, environmental research**
- **Summer (June–August): educational stays, social projects, local analysis**
- **Autumn (September–November): cross-sector workshops, collaborative events, field observation**
- **Winter (Dec–Feb): thematic residencies, inclusive training, long retreats**



# ZANZIBAR: BETWEEN SWAHILI ROOTS, SACRED FORESTS, AND INNER REFLECTION

## ITINERARY – INTEGRATED MICE

### DAY 1 – STONE TOWN, ROOF GARDEN HERITAGE: SHARED ROOTS

Arriving in **Stone Town** is a multisensory experience. The coral stone streets, carved balconies, and Moorish doorways speak of centuries of cultural intersections. The group immerses themselves in a guided walk, led by a young local historian, amid Omani architecture, tales of navigation, and artisan workshops. An initial team-building experience takes place in a workshop on Swahili culture hosted in a converted ancient palace. The experience concludes at sunset with dinner on a heritage rooftop overlooking the ocean, where storytelling intertwines with networking.

### DAY 2 – JOZANI FOREST, THE ROCK: NATURAL BALANCE

We set off for the **Jozani Forest**, where the presence of red colobus monkeys and mangroves creates a timeless atmosphere. The group participates in a mindful hiking session among ancient trees and ancestral sounds. Afterward, we head to the east coast for an exclusive experience: a private lunch at **The Rock**, the renowned restaurant on a solitary rock, accessible on foot only at low tide. A perfect symbol for a team that wants to learn to "move with the tide."

### DAY 3 – KIZIMKAZI, DHOW SUNSET CRUISE: CONNECTING WITH THE ESSENTIALS

In the village of **Kizimkazi**, the experience is authentic and disarming. You set out for a dolphin-watching activity with local fishermen and return to participate in a community project on sustainable fishing. The team works in small groups, creating deep bonds through simple gestures. In the evening, a traditional wooden dhow welcomes guests for a mini-sunset cruise: aperitifs aboard, live acoustic music, and heartfelt reflections.

### DAY 4 – MANGAPWANI CORAL CAVES, SPICE GARDEN: INTROSPECTION AND HIDDEN BEAUTY

We head to the coral caves of **Mangapwani** for a morning of exploration and mindful silence. A coach facilitates a workshop on adaptive leadership in uncertain environments, using the concept of the cave as a metaphor for inner depth. In the afternoon, a tasting of traditional Swahili cuisine takes place on an organic spice farm, with demonstration cooking and sensory storytelling. A dinner under the stars concludes the day, accompanied by local musicians and storytelling around the campfire.

### DAY 5 – NUNGWI BEACH, ECO-RETREAT: VISIONS THAT REGENERATE

The closing event takes place on the north coast, in **Nungwi**, where the water takes on unreal hues. The final meeting takes place in an eco-resort overlooking the ocean: assessments, new goals, team commitments. After a light lunch on the beach, we say goodbye with a sense of renewal: each participant leaves the island with a broader vision and renewed energy.



# MALDIVES

## AN ARCHIVE OF SILENCE AND VISION FOR UNIQUE EVENTS

The Maldives are more than a picture-perfect paradise. They are an invitation to think differently, to rediscover simplicity, to listen deeply. For exclusive MICE events, they transform into settings of strategic intimacy, where every encounter is precious, every word is amplified, every moment becomes symbolic. Among remote atolls, water villas, white sand, and transparent waters, the group focuses, listens, and renews itself.

## ACCESSIBILITY AND HOSPITALITY

Malé International Airport is connected to major European, Middle Eastern, and Asian hubs, making the Maldives easily accessible for MICE events from multiple continents. The national airline, Maldivian Airlines, offers a select business class, with spacious seats, personalized onboard service, and a travel experience also suitable for incentive trips and executive groups. Transfers between the atolls—by seaplane, air taxi, or speedboat—are highly scenic and well-coordinated, allowing even the most remote islands to be reached seamlessly and spectacularly. The local offering is complemented by partners specializing in high-profile corporate events, including on private islands, offering turnkey solutions for immersive and exclusive experiences.

## ACTIVITIES THAT RECONNECT

Floating workshops on private jetties, team coaching in beach bungalows, guided snorkeling among coral reefs, relaxing sunset strolls, silent meetings under palm trees, marine sustainability workshops, private dinners on sands that emerge only at low tide. The Maldives is the ideal place for "little but essential."





## **NORTHERN MALDIVES — HAA ALIFU, HAA DHAALU, SHAVIYANI, NOONU, RAA**

### **BETWEEN INSULAR TRADITION, PURE ECOSYSTEMS AND LONG-TERM VIEWS**

The Northern Maldives preserve the archipelago's original soul: islands untouched by tourism, villages where life flows according to the rhythm of the tides, and coastal forests rich in biodiversity. Here, communities still preserve artisanal practices and knowledge related to navigation, fishing, and environmental care. A place of listening and insight, ideal for cultural projects, environmental studies, and retreats seeking authenticity. The landscape is simple, poetic, and fosters meaningful connections.

### **ACCESSIBILITY AND HOSPITALITY**

Connect via domestic flight from Malé to Dharavandhoo, Hoarafushi, or Hanimaadhoo. Some islands are home to eco-resorts or local guesthouses with a focus on sustainability. They're ideal for small groups, slow travel, or field learning experiences. The logistics take longer, but they offer a deeper insight.

### **EXPERIENCES THAT INSPIRE AND UNITE**

Workshops in fishing villages, excursions with marine biologists, citizen science activities on the reefs, collective storytelling practices, and meetings with local artisans. Snorkeling in pristine reefs, ocean storytelling workshops, and lateral viewing in silent environments.

### **THE IDEAL SEASONS FOR EVERY TYPE OF EVENT**

- **Spring (Mar–May):** educational trips, environmental experiences, cultural research
- **Summer (June–August):** interdisciplinary projects, sustainable co-design, field school
- **Autumn (September–November):** cultural retreats, environmental CSR, awareness workshops
- **Winter (Dec–Feb):** ecological missions, collaborative storytelling, thematic dives



## **NORTH CENTRAL MALDIVES — BAA, LHAVIYANI, FAAFU, DHAALU**

### **BETWEEN UNESCO BIOSPHERES, ANCIENT CORALS AND CONSCIOUS DESIGN**

This region is home to the ecological heart of the Maldives, with Baa Atoll declared a UNESCO Biosphere Reserve. The resorts are pioneers in sustainability, and the islands offer landscapes that combine nature and design with rare balance. It's a perfect location for events with a positive impact: educational trips, environmental projects, and meetings on the future and biodiversity. People come here to think, observe, and be inspired by a nature that teaches and inspires.

### **ACCESSIBILITY AND HOSPITALITY**

Easy access from Malé via domestic flights and seaplanes. A wide selection of eco-luxury resorts, marine research centers, and meeting spaces in natural settings. Ideal for groups seeking environmental quality, reflection, and sustainable innovation.

### **EXPERIENCES THAT INSPIRE AND UNITE**

Snorkeling on World Heritage reefs, meetings with scientists and environmental activists, workshops on regenerative design and the blue economy. Open-air work sessions, strategic reflection events, and co-creation in marine environments.

### **THE IDEAL SEASONS FOR EVERY TYPE OF EVENT**

- **Spring (Mar–May):** educational trips, sustainable events, summer schools
- **Summer (June–August):** ecological observation, regenerative experiences, design thinking
- **Autumn (September–November):** creative teams, green projects, interdisciplinary planning
- **Winter (Dec–Feb):** ESG meetings, environmental leadership, experiential board meetings



## **CENTRAL MALDIVES — KAAFU, ALIFU ALIFU, ALIFU DHAALU, VAAVU**

### **BETWEEN GLOBAL HUBS, CORAL ARCHITECTURES AND CONNECTED VISIONS**

The central region is the most accessible and urbanized of the Maldives. It includes Malé, the archipelago's capital, and the atolls with the highest concentration of resorts, convention centers, and international services. It is perfect for institutional events, conferences, diplomatic missions, and large-scale MICE. The surrounding islands offer a balance between logistical efficiency and natural beauty. A place where reflection intertwines with action, and global connections meet oceanic culture.

### **ACCESSIBILITY AND HOSPITALITY**

International airport in Malé, connected to the entire world. Wide selection of business-friendly resorts, conference boats, ocean-view meeting rooms, and MICE facilities. Ideal for medium to large events, corporate travel, and international meetings.

### **EXPERIENCES THAT INSPIRE AND UNITE**

Conferences on floating platforms, workshops on hub islands, visits to social and cultural projects. Events at resorts with educational foundations, intercultural seminars, and urban marine storytelling. Sessions blending reflection and active entertainment.

### **THE IDEAL SEASONS FOR EVERY TYPE OF EVENT**

- **Spring (Mar–May):** conferences, diplomatic events, business meetings
- **Summer (June–August):** regional meetings, hybrid MICE, strategic missions
- **Autumn (September–November):** networking projects, institutional days, team visioning
- **Winter (Dec–Feb):** top-level events, international planning, resort launches



## **SOUTH-CENTRAL MALDIVES — MEEMU, THAA, LAAMU**

### **BETWEEN EMERGING NATURE, LISTENING ISLANDS, AND FUTURE INTUITIONS**

The south-central region is a region undergoing transformation: islands emerging in the sustainable tourism landscape, communities carefully embracing new horizons, and places welcoming positive-impact projects. The Maldives here remain genuine, in dialogue with the environment and the essential. Ideal for creative projects, leadership explorations, and low-impact experiential events. A landscape that reflects, regenerates, and demands time.

### **ACCESSIBILITY AND HOSPITALITY**

Domestic flights from Malé. Mid-range accommodations, ecolodges, guesthouses, and new community-based resorts. Ideal for small to medium-sized events, immersive training, and slow-paced experiences. Excellent balance between accessibility and relaxation.

### **EXPERIENCES THAT INSPIRE AND UNITE**

Strategic visioning workshops, community-led planning, and marine biodiversity excursions. Thematic workshops in the forest and on the beach, slow planning sessions, and narrative walks on remote islands.

### **THE IDEAL SEASONS FOR EVERY TYPE OF EVENT**

- **Spring (Mar–May):** slow design, regenerative leadership, narrative MICE
- **Summer (June–August):** study trips, hybrid teams, collaborative strategies
- **Fall (September–November):** immersive experiences, in-depth learning, residencies
- **Winter (Dec–Feb):** impactful events, strategic reflection, co-visioning



## **SOUTHERN MALDIVES — GAAFU ALIFU, GAAFU DHAALU, GNAVIYANI (FUVAHMULAH), ADDU**

### **BETWEEN COLONIAL HISTORY, STRONG IDENTITIES AND INTERDISCIPLINARY MISSIONS**

The South is the most remote, autonomous, and culturally complex part of the Maldives. Addu was once occupied by the British and preserves a rare urban memory for the archipelago. Fuvahmulah is a single island with unique ecosystems. The entire area is perfect for experimental events, climate change research projects, advanced cultural explorations, and interdisciplinary missions. Here, the future is built by listening to the past.

### **ACCESSIBILITY AND HOSPITALITY**

Direct flights from Malé to Addu or Fuvahmulah. Some local resorts and university facilities. Less touristy areas, but with a strong identity and suitable logistics for select groups. Excellent for alternative MICE and long-term projects.

### **EXPERIENCES THAT INSPIRE AND UNITE**

Colonial history workshops, visits to former military bases, urban reflections on island identity. Meetings with environmental activists, dives among pristine coral reefs, interdisciplinary missions with local partners.

### **THE IDEAL SEASONS FOR EVERY TYPE OF EVENT**

- **Spring (Mar–May):** field research, cultural diplomacy, advanced training
- **Summer (June–August):** thematic projects, environmental planning, academic missions
- **Autumn (September–November):** storytelling events, international think tanks, cultural CSR
- **Winter (Dec–Feb):** multidisciplinary planning, territorial storytelling, co-development



# MALDIVES: ESSENTIAL MINIMALISM

## ITINERARY – INTEGRATED MICE

### DAY 1 – MALÉ, LOCAL ISLANDS: ENCOUNTER WITH AUTHENTICITY

Arriving in the Maldives isn't just about crystal-clear water: we begin in **Malé**, the surprisingly vibrant capital, before embarking for an island inhabited by local communities. The group participates in a workshop on traditional Dhivehi crafts and discovers the archipelago's profound identity. A dinner by the sea, barefoot in the sand, begins the journey, marked by elegant simplicity and human connection.

### DAY 2 – VAAVU ATOLL, SANDBANK RETREAT: MENTAL AND CREATIVE SPACE

We set sail for one of the most remote spots in the **Vaavu Atoll**: an isolated sandbank, surrounded by turquoise waters, becomes the setting for a day of creative reflection. Sensory team building activities, relaxing walks, and open-air brainstorming help the group generate new ideas. A sustainable gourmet picnic, organized by local chefs, provides a convivial break between sky and ocean.

### DAY 3 – MEEMU ATOLL, ECO-DIVE & DIALOGUE: DEEP DIVE

A day dedicated to the underwater ecosystem. Guided dives or snorkeling on pristine reefs foster environmental awareness. In the afternoon, at an ecolodge overlooking the coral reef, an inspirational session with a marine sustainability expert takes place. The evening kicks off with a silent dinner: a moment to rediscover inner listening in a poetic setting.

### DAY 4 – THAA ATOLL, UNINHABITED ISLAND: STRATEGIC ESSENTIALS

The entire day takes place on an uninhabited island, specially furnished with light and elegant structures. The group divides into teams for problem-solving activities related to survival and symbolic design. They reflect on what is truly essential in work and life. Sunset welcomes a closing ceremony with a fire on the beach, local drums, and words that remain etched in the memory.

### DAY 5 – BOUTIQUE RESORT, SPA AND LEADERSHIP CIRCLE: CONSCIOUS REBIRTH

The journey concludes with a gradual return to reality, but in a new form. At an eco-chic boutique resort, a final leadership circle is held, where experiences are shared and shared goals are defined. A healthy lunch, a rejuvenating massage, and time for yourself help participants process their experiences. They return home feeling light, focused, and inspired.



## **WOULD YOU LIKE A FREE QUOTE?**

**We hope you enjoyed this travel planner and inspired your next business MICE travel.**

**If you want to organize your next business ( MICE ) travel with us, all you have to do is follow the two steps indicated in the following pages.**

**We will do everything possible to prepare a tailor-made program and quotation for excellent value for money.**



# JOIN THE ATLANTIC CORPORATE CLUB

It will allow us to know all your needs in terms of business  
(MICE) travel and to reward you with tailor-made  
services

[JOIN](#)



# REQUEST YOUR QUOTE

Fill out and send the form with all the details and  
you will receive your free quote

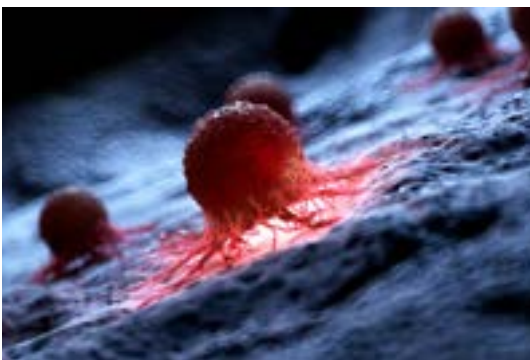
QUOTE




## **OUR SUPPORT FOR SAFEGUARDING THE PLANET AND CANCER RESEARCH**



WITH OUR TRAVELS, WE WANT TO OFFER OUR CUSTOMERS THE OPPORTUNITY TO CONTRIBUTE TO NON-PROFIT ORGANIZATIONS COMMITTED TO SOLVING THE FOLLOWING GLOBAL PROBLEMS



- CONSERVATION OF FLORA - FAUNA
- GLOBAL WARMING
- CANCER RESEARCH



# Atlantic Travel & Tours Ltd

London, New York  
Los Angeles, Miami  
Denver

## **ATLANTIC TRAVEL & TOURS LTD**

**HEADQUARTERED IN THE UNITED STATES AND THE UNITED KINGDOM**

### **REGISTERED COMPANIES**

USA - DENVER - COLORADO - COMPANY REGISTRATION NUMBER: 202 110 96 014

UK - LONDON - COMPANY REGISTRATION NUMBER: 130 288 33

### **E-MAIL**

USA - [unitedstatesadministration@atlantictourstravel.com](mailto:unitedstatesadministration@atlantictourstravel.com)

UK - [unitedkingdomadministration@atlantictourstravel.com](mailto:unitedkingdomadministration@atlantictourstravel.com)

### **WEBSITE**

[www.visitatlantictraveltours.com](http://www.visitatlantictraveltours.com)

### **FULL CONTACT DETAILS**

[www.visitatlantictraveltours.com/contact](http://www.visitatlantictraveltours.com/contact)