

ATLANTIC TRAVEL & TOURS

BUSINESS TRAVEL

**INSPIRATIONAL
BROCHURE**



FRENCH POLYNESIA

WWW.VISITATLANTICTRAVELTOURS.COM

FROM THE CEO

Dear travelers,

We are thrilled to introduce Atlantic Travel & Tours, a tour operator specializing in tailor-made MICE travel to French Polynesia. Our mission is to transform every corporate event, incentive, conference, and meeting into a memorable experience, combining **professionalism, creativity, and attention to detail**.

Thanks to our **many years of experience**, we collaborate with a select network of suppliers—prestigious hotels, state-of-the-art conference centers, reliable transportation companies, and charming accommodations—to offer **flawless logistics solutions tailored to your needs**. Whether you're planning an intercontinental summit, a roadshow, a product launch, or a team building program, our team can manage **every** aspect: from **planning** to **execution**, from **transportation** to **entertainment**, always keeping an eye on your **budget** and business **objectives**.

Choosing Atlantic Travel & Tours means accessing a strategic partner that puts **your satisfaction first**. Our quality of work is driven by **precision, flexibility**, and a **passion** for hospitality. We will be by your side through every phase of the project: **initial brainstorming, logistics, on-site support, final follow-up, and results analysis**.

We look forward to working together to create unique and effective MICE trips. We remain at your complete disposal for an initial meeting, either virtual or in person, to plan your next success together.



Steve Tabacchi

DR. STEVE TABACCHI
CEO - FOUNDER
ATLANTIC TRAVEL & TOURS

WHY TRAVEL TO FRENCH POLYNESIA FOR MICE

A JOURNEY THROUGH PRIMORDIAL NATURE, DEEP CULTURES AND OCEANIC INSPIRATION

French Polynesia is an archipelago that defies imagination: a web of volcanic islands, translucent lagoons, age-old traditions, and a sense of expansive time that invites you to slow down and connect. Here, where the ocean meets Polynesian spirituality, every MICE event transforms into an experience of transformation, beauty, and profound resonance. From the verdant peaks of Moorea to the magnetic silence of Taha'a, from the sacred energies of Raiatea to the elegant sensuality of Bora Bora, French Polynesia creates settings that inspire, excite, and rejuvenate. A destination for those seeking vision, beauty, and authentic connection.

INCENTIVES AND TEAM BUILDING AMONG TURQUOISE WATERS, ANCIENT CIVILIZATIONS AND SLOW INNOVATION

In French Polynesia, MICE activities become collective rituals: traditional welcome ceremonies, pirogue excursions to pristine motus, emotional intelligence workshops in tropical gardens, snorkeling in sacred lagoons, and strategic dinners under the stars. Teams can immerse themselves in ancestral rhythms with Tahitian dance workshops or carve tikis with master craftsmen. Sailing trips, relaxation, and strategy sessions in floating ecolodges foster introspective, creative, and connected work. Each program takes place in locations that amplify human potential, amidst nature, culture, and wonder.

ICONIC DESTINATIONS, ATMOSPHERES THAT TRANSFORM

- **Tahiti:** the gateway and vibrant heart of the archipelago, it offers modern **conference** centers, high-end hotels, and a lively and cultural capital – Papeete.
- **Moorea:** Tahiti's twin island, an ideal place for green **incentives** and outdoor activities: lagoons, volcanic peaks, and eco-luxury lodges.
- **Bora Bora:** an icon of global luxury, perfect for high-impact **meetings**, exclusive **events**, and unforgettable **award trips**.
- **Raiatea and Taha'a:** the spiritual heart of Māohi culture, ideal for strategic **retreats**, sensory experiences, and cultural immersions.
- **The Tuamotu and Marquesas Islands:** remote and magnetic, they offer unique contexts for visionary **events**, digital detoxes, and regenerative decision-making.

ACCESSIBILITY AND CUSTOMIZED SERVICES FOR EVENTS

French Polynesia is connected by international flights to Tahiti Faa'a Airport (PPT). Air Tahiti Nui, the national airline, offers premium services designed for MICE travelers: Business Class with fully flat seats, gourmet menus inspired by Polynesian cuisine, dedicated lounges, wellness kits, and seamless connections to the islands via Air Tahiti's domestic network. On the ground, local MICE operators are accustomed to managing bespoke events even in remote locations, offering reliable logistics, cultural hospitality, and modular infrastructure—from overwater resorts to meeting rooms in tropical gardens. Entry formalities are streamlined, and political and health stability ensure a safe and professional environment.





CHARTER FLIGHTS

REASONS TO USE THEM

Charter flights are private or semi-private flights rented specifically for specific needs, such as business trips, corporate events, or group transportation. They are widely used by companies seeking flexibility, time savings, and comfort.

- Flexibility to decide on times and airports (even the less busy ones)
- Save time: No queues, long checks and waits at commercial airports
- Privacy and comfort: Perfect for working or meeting on board
- Access to secondary airports: Often closer to business destinations

Book your charter flight now with our support and experience the difference!



ANCILLARY SERVICES

We can assist with visa arrangements, currency exchange, advance luggage shipment, work materials, and insurance policies for cancellation, lost baggage, and medical care



FRENCH POLYNESIA – AUSTRAL ARCHIPELAGO

BETWEEN INVISIBLE NATURE, INTACT CULTURES AND DEEP INSPIRATION

The Austral Archipelago is the most remote and authentic face of French Polynesia, a land of untouched islands where the connection with nature, time, and traditions is still pure. Here, the landscape is a symphony of volcanic cliffs, turquoise lagoons, and fern-covered mountains, far from any interference. Life flows slowly, villages tell oral stories passed down for centuries, and experiences become true rites of regeneration. It is a perfect location for MICE events seeking silence, pristine beauty, and profound human connections. A rare context, where leadership, vision, and teamwork are radically rediscovered.

ACCESSIBILITY AND HOSPITALITY

The Austral Islands are accessible via domestic flights from Tahiti, with Air Tahiti offering weekly connections to Tubuai, Rurutu, Rimatara, and Raivavae. The flights, including Comfort Class, guarantee attentive, flexible service, geared toward the business traveler. Upon arrival, small, efficient airports and a personalized welcome make every journey simple and warm. Accommodations, often run by local families, range from eco-friendly lodges to charming guesthouses, ideal for small groups. Local operators, with deep knowledge of the islands' culture and rhythms, create tailor-made programs for immersive and extraordinary events.

EXPERIENCES THAT INSPIRE AND UNITE

In the Austral Islands, every activity is a cultural and sensory immersion: sailing between the islands in pirogues, workshops with local artisans weaving plant fibers, mindful walks along sacred mountain paths, traditional welcome ceremonies, and relaxing sunset strolls on the beach. In Rurutu, team coaching retreats can be organized among limestone caves and taro plantations; in Raivavae, silent team building sessions can be held on bicycles along pristine lagoons. Work sessions can take place in tropical gardens, ocean-view terraces, or simple fales, where the lack of distractions fosters concentration, listening, and shared vision.

THE IDEAL SEASONS FOR EVERY TYPE OF EVENT

- **Southern Spring (September–November):** mild climate and lush nature, perfect for outdoor **workshops** and village activities
- **Southern Summer (December–February):** excellent for **incentive** trips, lagoon explorations and shared creativity projects
- **Southern Autumn (March–May):** ideal time for strategic **retreats**, regeneration programs, and immersive **team coaching**
- **Southern winter (June–August):** cooler and more contemplative atmosphere, ideal for small indoor **events** and moments of operational silence



FRENCH POLYNESIA – GAMBIER ARCHIPELAGO

BETWEEN OCEANIC SPIRITUALITY, LIVING CULTURE AND DEEP RHYTHMS

The Gambier Archipelago is the hidden gem of French Polynesia: remote, introspective, and deeply connected to nature and memory. Here, in the far southeastern Pacific, you'll find emerald lagoons, ancient coral cathedrals, villages suspended in time, and a welcoming population that preserves the deepest roots of Polynesian culture. Ideal for MICE events seeking active silence, spaces for vision, and collective regeneration, the Gambier is a perfect retreat for leaders, teams, and creatives seeking authenticity and renewed energy. In this setting, corporate events become truly transformative experiences.

ACCESSIBILITY AND HOSPITALITY

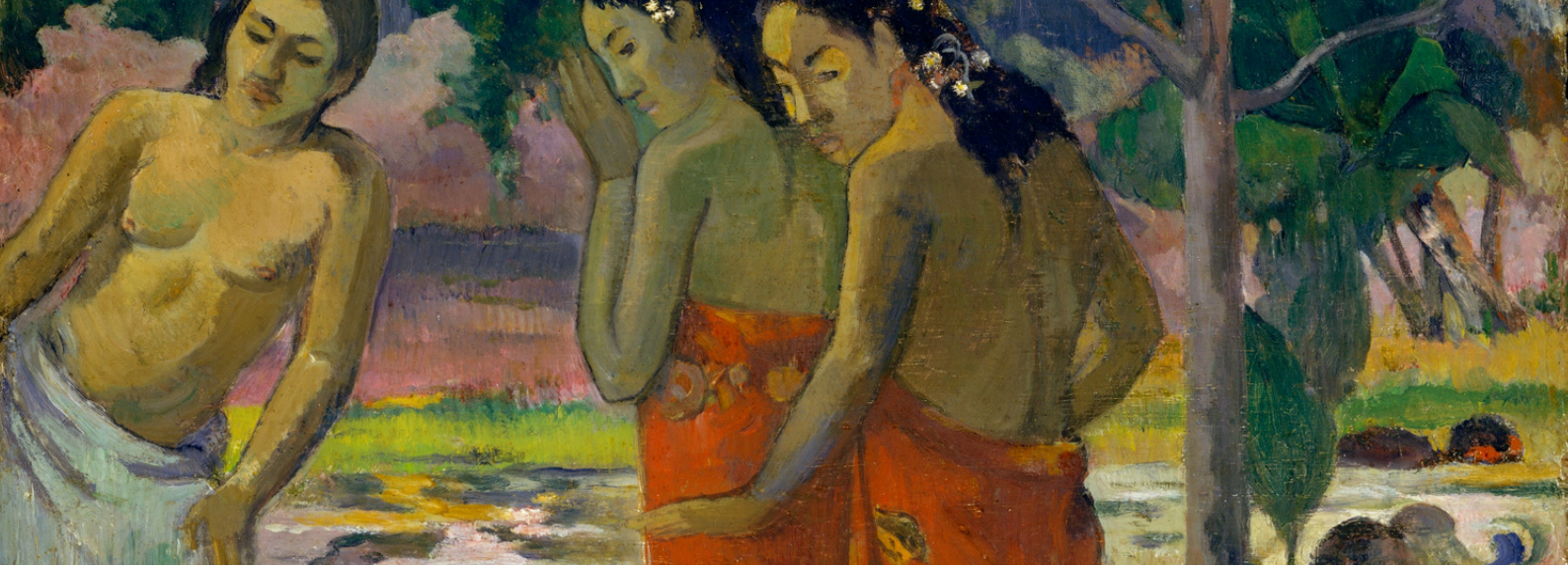
Regular flights from Papeete with Air Tahiti connect the Gambier Archipelago, landing on the main island of Mangareva. Onboard services offer essential comforts with premium options dedicated to business travelers. Upon arrival, Totegegie Airport welcomes delegates with simple yet efficient service, including personalized boat transfers to the various islands of the archipelago. Accommodations include charming guesthouses and family-run lodges overlooking the lagoon, ideal for small groups seeking immersion and authenticity. Local operators are experts in organizing tailor-made experiences, respecting the island's culture and rhythms.

EXPERIENCES THAT INSPIRE AND UNITE

Activities in Gambier are deeply moving, slow-paced immersion experiences. Group workshops in historic coral stone churches, sailing trips in the turquoise lagoon, meetings with pearl farmers who recount the birth of black pearls, or moments of silence and relaxing walks in the Mangareva hills. You can organize a strategic retreat in Rikitea, among ancient marae and sweeping views, or a team leadership workshop under the palm trees overlooking the ocean. Each experience, accompanied by rituals, oral histories, and local cuisine, becomes part of a journey of cohesion, awareness, and renewal.

THE IDEAL SEASONS FOR EVERY TYPE OF EVENT

- **Southern Spring (September–November):** ideal time for outdoor **events**, cultural explorations and slow-paced experiences
- **Southern Summer (December–February):** great for **incentive** trips, creative **encounters**, and immersions in natural and spiritual beauty
- **Southern Autumn (March–May):** perfect season for strategic **retreats**, moments of collective reflection and listening paths
- **Southern winter (June–August):** cooler and clearer climate, ideal for **events** that require concentration and contact with the essential



FRENCH POLYNESIA – MARQUESAS ARCHIPELAGO

WILD VERTIGO, PRIMORDIAL INSPIRATION

The Marquesas Archipelago is a world apart, where the Pacific reaches deep, mountains rise vertically from the ocean, and culture lives on in song and myth. This remote and magnetic archipelago is the ideal setting for extraordinary MICE events, where the power of nature and a sense of distance spark new visions, authentic listening, and profound connections. Among lava-sculpted bays, tropical forests, archaeological sites, and hospitable communities, every experience becomes a journey of collective transformation and inner regeneration.

ACCESSIBILITY AND HOSPITALITY

The Marquesas Archipelago is connected to Papeete by direct Air Tahiti flights to Nuku Hiva and Hiva Oa, the archipelago's main islands. Onboard services offer functional comfort, with dedicated premium class options for MICE groups and priority check-in. Local airports, though small, are equipped to accommodate corporate groups with tailor-made transfers and coordinated logistics. Hospitality is expressed in ecolodges overlooking breathtaking bays, charming family guesthouses, and boutique resorts perfect for intimate events. Local operators are expert in creating authentic itineraries, respecting nature and local culture.

EXPERIENCES THAT INSPIRE AND UNITE

The Marquesas offer powerful and symbolic experiences: Marquis-style welcome ceremonies, horseback excursions past tiki statues and sacred valleys, strategic coaching sessions at archaeological sites, and treks on volcanic ridges overlooking the ocean. On Hiva Oa, moments of reflection can be organized at Paul Gauguin's tomb or creative workshops with wood and stone artisans. On Nuku Hiva, secluded coves become venues for private dinners and deep sharing, while team-building activities can include canoe sailing, traditional fishing, and musical performances under the stars.

THE IDEAL SEASONS FOR EVERY TYPE OF EVENT

- **Southern Spring (September–November):** dry, bright weather, perfect for exploration and outdoor activities
- **Southern Summer (December–February):** vibrant atmosphere for creative experiences, cultural immersion and celebrations
- **Southern Autumn (March–May):** ideal time for immersive **workshops** and strategic **retreats**
- **Southern Winter (June–August):** cool and stimulating, great for contemplative **events** and shared **viewing sessions**



FRENCH POLYNESIA – TUAMOTU ARCHIPELAGO

ABSOLUTE TRANSPARENCIES, DEEP FOCUS

The Tuamotu Archipelago is a universe suspended between sky and sea, where time expands and every detail is amplified. These coral atolls, among the purest and most pristine in the world, offer an ideal setting for MICE events focused on concentration, sustainability, and shared well-being. Here, surrounded by turquoise lagoons, pink sands, and hushed silence, the team reconnects with the essential. Perfect for strategic retreats, regenerative incentives, and immersive formats, the Tuamotu is a place where simplicity becomes luxury and the horizon inspires big-picture thinking.

ACCESSIBILITY AND HOSPITALITY

The main atolls, such as Rangiroa, Tikehau, Fakarava, and Manihi, are connected to Papeete by Air Tahiti domestic flights. The airline offers premium services with special attention to business travelers: priority boarding, local snacks, and extra baggage for MICE equipment. Local airports are basic yet efficient, with attentive reception and private transfers by sea or land. Accommodations range from elegant ecolodges to waterfront resorts, many of which offer informal meeting spaces, private beach dinners, and tailor-made activities. Local operators, experts in experiential tourism, offer tailored assistance even on the most remote islands.

EXPERIENCES THAT INSPIRE AND UNITE

In the Tuamotu, MICE becomes a sensory experience: strategic visioning sessions on private motus, snorkeling among coral gardens, relaxing sunrise strolls on the pink sands of Tikehau, team building sessions in a pirogue sailing through ocean passes. Fakarava, a UNESCO biosphere reserve, offers ideal settings for sustainable retreats, while Rangiroa—with its coral wineries and black pearls—is perfect for exclusive incentives. Workshops transform into ceremonies by the sea, and relationships are built in the deep silence of the lagoons.

THE IDEAL SEASONS FOR EVERY TYPE OF EVENT

- **Southern Spring (September–November):** dry climate, perfect for nature immersions and open-air formats
- **Southern Summer (December–February):** ideal for regenerative **events**, cultural experiences, and seaside celebrations
- **Southern Autumn (March–May):** soft light and optimal conditions for creative **retreats** and outdoor learning
- **Southern Winter (June–August):** cool atmosphere, ideal for contemplative **meetings** and symbolic navigations



FRENCH POLYNESIA – SOCIETY ARCHIPELAGO

BETWEEN TROPICAL CHARM AND AUTHENTIC HOSPITALITY

The Society Islands are the welcoming and vibrant soul of French Polynesia. From Tahiti to Bora Bora, from Moorea to Huahine, each island combines scenic beauty and profound culture, creating the perfect backdrop for MICE events seeking inspiration, impact, and human connection. The turquoise lagoons, volcanic profiles, and slow pace of local life amplify listening and creativity. Here, amidst exclusive resorts and authentic communities, every event becomes a transformative experience: intense, memorable, and vibrant.

ACCESSIBILITY AND HOSPITALITY

Tahiti-Faa'a International Airport, Polynesia's main hub, welcomes flights from Europe, North America, Australia, and New Zealand. Air Tahiti Nui, the national airline, offers a highly refined Premium and Business service, with dedicated lounges, gourmet Polynesian-inspired menus, and amenities designed for MICE delegates. From Tahiti, frequent flights and ferries connect to Moorea, Bora Bora, Raiatea, and the other islands. Accommodation options range from 5-star resorts to boutique eco-lodges, many of which offer meeting spaces in breathtaking settings, wellness services, technical support, and local catering. The level of hospitality and care is exceptional, with a welcome that combines professionalism and a spirit of "mana."

EXPERIENCES THAT INSPIRE AND UNITE

In the Society Islands, each island is the perfect setting for out-of-the-ordinary MICE activities: floating workshops in the waters of Bora Bora, guided snorkeling with marine biologists to strengthen empathetic leadership, creative retreats in the tropical gardens of Huahine, team building canoe trips in Moorea, or scenic treks among the peaks of Raiatea. Traditional welcome ceremonies, workshops on Maohi culture, local cooking classes, or meetings with artists and environmental activists make the experience profound and authentic. Nature is an active part of the program, offering challenge, inspiration, and reflection.

THE IDEAL SEASONS FOR EVERY TYPE OF EVENT

- **Southern Spring (September–November):** perfect climate for outdoor activities and scenic **incentives**
- **Southern Summer (December–February):** ideal time for immersive **events**, corporate celebrations and tropical relaxation
- **Southern Autumn (March–May):** golden light and blooms ideal for sensory experiences and creative strategies
- **Southern winter (June–August):** cool, dry climate, perfect for **intensive formats**, **conferences** and **incentive** trips



FRENCH POLYNESIA: DEEP CONNECTIONS BETWEEN SEA, CULTURE, AND INNOVATION

ITINERARIO – MICE INTEGRATO

DAY 1 – TAHITI: THE VIBRANT HEART OF POLYNESIA

The journey begins in **Tahiti**, the main island and gateway to this Pacific paradise. After a warm, traditional welcome with lei and drums, the group will be immersed in the vibrant energy of **Papeete**, a city that blends tradition and modernity. A plenary session will take place in a modern conference center overlooking the ocean, followed by an experiential leadership workshop inspired by Maohi values. The afternoon is reserved for an innovative team building activity: a cultural treasure hunt through local markets, artisan workshops, and street art, where participants will discover stories of Polynesian resilience and creativity. In the evening, a gala dinner featuring fusion dishes prepared by local chefs will accompany elders' tales of the island's myths and legends, creating a magical atmosphere of connection and discovery.

DAY 2 – MOOREA: NATURE, SPIRIT, AND SHARING

A short ferry ride takes the group to **Moorea**, the heart-shaped island where nature unfolds in spectacular fashion. The day begins with a relaxing stroll on a crystal-clear lagoon, fostering creativity and focus. Following this, an immersive storytelling workshop, inspired by Polynesian oral traditions, will help participants communicate with empathy and authenticity. In the afternoon, the activity moves into the heart of nature: a team-building trail through palm forests, white-sand beaches, and secluded coves, with collaborative kayaking and snorkeling challenges. The day concludes with a shared culinary experience in a local village, where guests learn ancient Maohi cooking techniques, strengthening team spirit through the discovery of flavors and rituals.

DAY 3 – HIVA OA: PRIMAL CREATIVITY AND DEEP CONNECTIONS

Landing on **Hiva Oa** marks a turning point in the journey: here, the energy shifts, slows, and becomes internal. This wild and intense island was chosen by Paul Gauguin as his ultimate refuge, a place to free himself from Western conventions and connect with a purer, more visceral, and sensorial dimension of life. The day begins with a private visit to the **Gauguin Museum**, immersed in nature, which displays reproductions of his works and personal objects. It continues with a creative team-building session in an open-air atelier, inspired by Polynesian colors and symbols. A local artist leads the group in a painting or woodcut workshop, exploring the connection between art, identity, and territory. In the afternoon, we reach the **Calvaire cemetery**, where Gauguin is buried, for a moment of silent reflection on a promontory overlooking the ocean. Here, we engage in a short discussion on the theme of "returning to the essential," offering insights for more humane and conscious leadership. In the evening, a convivial dinner in a wooden fale, featuring traditional Marquesan dishes and oral histories, concludes the day. This is the moment when participants begin to truly appreciate the value of creative disconnection: like Gauguin, they too are (re)discovering the power of radical choices.

DAY 4 - TUAMOTU ARCHIPELAGO: ADVENTURE AND SUSTAINABILITY

Flying to the **Tuamotu archipelago**, the group lands on **Rangiroa**, one of the largest and most pristine atolls in the world. This stopover is dedicated to a green and adventurous MICE experience, with a focus on sustainability and respect for the marine environment. The morning includes a technical briefing at an environmental research center, followed by an educational dive into coral reefs, led by marine biologists, to understand the importance of ecosystem protection. In the afternoon, an engaging team-building activity involving kayaking and traditional fishing will allow guests to experience ancient ways of life, while a dinner featuring local products will celebrate biodiversity. The night is dedicated to a stargazing session, with ancestral storytelling, strengthening a sense of wonder and belonging.

DAY 5 – BORA BORA: THE ICON OF LUXURY AND REGENERATION

The grand finale takes place in **Bora Bora**, the symbol of French Polynesia and a dream destination for exclusive incentives and retreats. The morning begins with a welcome breakfast at a luxury resort, followed by coaching and regenerative leadership workshops in scenic spaces, harnessing the soothing power of the landscape to spark innovative ideas and unity. The afternoon is dedicated to sensory experiences: from dives in the calm waters of the lagoon to walks in lush nature, to a perfume and essential oil creation workshop with native plants. The day concludes with an exclusive networking event on the beach, with tropical fruit cocktails and traditional Polynesian music, where business and pleasure merge in a final, unforgettable embrace.



WOULD YOU LIKE A FREE QUOTE?

We hope you enjoyed this travel planner and inspired your next business MICE travel.

If you want to organize your next business (MICE) travel with us, all you have to do is follow the two steps indicated in the following pages.

We will do everything possible to prepare a tailor-made program and quotation for excellent value for money.



JOIN THE ATLANTIC CORPORATE CLUB

It will allow us to know all your needs in terms of business
(MICE) travel and to reward you with tailor-made
services

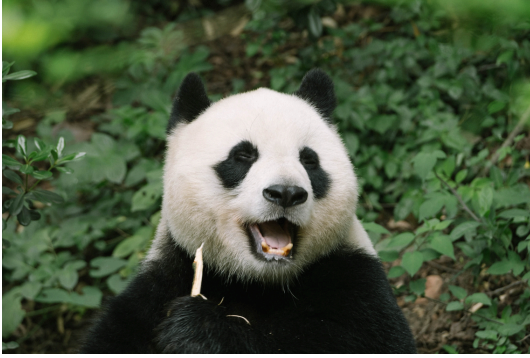
[JOIN](#)



REQUEST YOUR QUOTE

Fill out and send the form with all the details and
you will receive your free quote

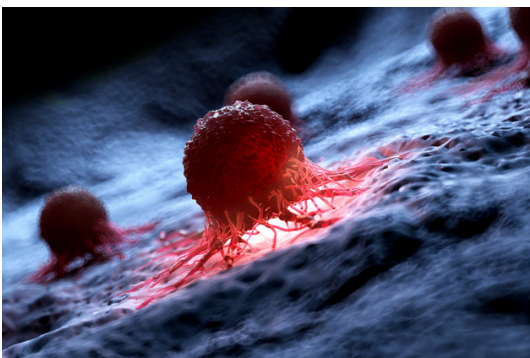
QUOTE



OUR SUPPORT FOR SAFEGUARDING THE PLANET AND CANCER RESEARCH



WITH OUR TRAVELS, WE WANT TO OFFER OUR CUSTOMERS THE OPPORTUNITY TO CONTRIBUTE TO NON-PROFIT ORGANIZATIONS COMMITTED TO SOLVING THE FOLLOWING GLOBAL PROBLEMS



- CONSERVATION OF FLORA - FAUNA
- GLOBAL WARMING
- CANCER RESEARCH



Atlantic Travel & Tours Ltd

London, New York
Los Angeles, Miami
Denver

ATLANTIC TRAVEL & TOURS LTD

HEADQUARTERED IN THE UNITED STATES AND THE UNITED KINGDOM

REGISTERED COMPANIES

USA - DENVER - COLORADO - COMPANY REGISTRATION NUMBER: 202 110 96 014

UK - LONDON - COMPANY REGISTRATION NUMBER: 130 288 33

E-MAIL

USA - unitedstatesadministration@atlantictourstravel.com

UK - unitedkingdomadministration@atlantictourstravel.com

WEBSITE

www.visitatlantictraveltours.com

FULL CONTACT DETAILS

www.visitatlantictraveltours.com/contact