

**ATLANTIC TRAVEL & TOURS**

# **BUSINESS TRAVEL**

**INSPIRATIONAL  
BROCHURE**



# **JAPAN**

**[WWW.VISITATLANTICTRAVELTOURS.COM](http://WWW.VISITATLANTICTRAVELTOURS.COM)**

## FROM THE CEO

---

Dear travelers,

We are thrilled to introduce Atlantic Travel & Tours, a tour operator specializing in tailor-made MICE travel to Japan. Our mission is to transform every corporate event, incentive, conference, and meeting into a memorable experience, combining **professionalism, creativity, and attention to detail**.

Thanks to our **many years of experience**, we collaborate with a select network of suppliers—prestigious hotels, state-of-the-art conference centers, reliable transportation companies, and charming accommodations—to offer **flawless logistics solutions tailored to your needs**. Whether you're planning an intercontinental summit, a roadshow, a product launch, or a team building program, our team can manage **every** aspect: from **planning** to **execution**, from **transportation** to **entertainment**, always keeping an eye on your **budget** and business **objectives**.

Choosing Atlantic Travel & Tours means accessing a strategic partner that puts **your satisfaction first**. Our quality of work is driven by **precision, flexibility**, and a **passion** for hospitality. We will be by your side through every phase of the project: **initial brainstorming, logistics, on-site support, final follow-up, and results analysis**.

We look forward to working together to create unique and effective MICE trips. We remain at your complete disposal for an initial meeting, either virtual or in person, to plan your next success together.



*Steve Tabacchi*

DR. STEVE TABACCHI  
CEO - FOUNDER  
ATLANTIC TRAVEL & TOURS

# WHY GO TO JAPAN FOR MICE

## BETWEEN ANCIENT DYNASTY, TECHNOLOGICAL FUTURE, AND RITUAL BEAUTY

Japan is a MICE destination that enchants and surprises, where the harmony between extreme innovation and age-old tradition generates profound, elegant, and memorable encounters. Tokyo and Osaka pulsate with creativity and avant-garde, while Kyoto offers the contemplative silence of its temples and Zen gardens. But it is beyond the most famous destinations that true gems for unconventional events lie: the islands of Noto, Yakushima, and the subtropical Amami and Yaeyama (Okinawa) offer pristine landscapes, vibrant local traditions, and perfect settings for strategic retreats, regeneration, and profound inspiration. From precision transportation to attentive hospitality, Japan transforms every event into an experience of authentic connection between mind, nature, and vision.

## INCENTIVE AND TEAM BUILDING BETWEEN THE FUTURE, NATURE, AND DEEP CULTURE

In Japan, incentives become a path to mindfulness. You can experience a team-building session in a dojo with martial arts masters, participate in tea ceremonies in Kanazawa's machiya, sail among the Setouchi Islands, or hike sections of the Kumano Kodo as a moment of regenerative leadership. Activities take place in unique settings: skyscrapers overlooking Mount Fuji, ryokans nestled in the woods, or hidden beaches on remote islands where time seems suspended. Cutting-edge technologies coexist with age-old rituals, creating a rare and powerful balance that fosters cohesion, innovation, and shared growth.

## ICONIC DESTINATIONS, ELEVATING ATMOSPHERES

- **Tokyo:** a global capital, frenetic and surprising, ideal for tech **events**, innovative **launches** and high-level **networking** in skyscrapers, contemporary art museums and futuristic locations.
- **Kyoto:** the spiritual soul of the country, perfect for reflective and inspirational **events** among temples, bamboo forests and ancient teahouses.
- **Osaka:** dynamic and down-to-earth, the capital of hospitality, an ideal venue for **conventions** and **team-building** sessions amidst food markets and historic castles.
- **Okinawa and Yaeyama Islands:** tropical paradises where time passes slowly, perfect for **retreats**, board **meetings** in eco-luxury resorts, and activities immersed in ocean nature.
- **Yakushima and Amami:** verdant and remote islands, UNESCO World Heritage Sites, ideal for small groups seeking pure energy, biodiversity, and creative silence.

## ACCESSIBILITY AND EXCELLENT SERVICES FOR MICE

Japan is among the world's most connected, efficient, and reliable destinations for MICE events. The international airports of Tokyo (Haneda and Narita), Osaka (Kansai), and Fukuoka provide daily connections from Europe, the Americas, and Asia, thanks to a comprehensive network and impeccable logistics. The two main airlines—Japan Airlines (JAL) and All Nippon Airways (ANA)—offer experiences designed for business travelers: fully flat-bed seats in Business Class, Wi-Fi, gourmet menus inspired by Japanese cuisine, and top-notch hospitality. ANA stands out for its elegant interiors, omotenashi hospitality, and dedicated services for corporate groups, with flexible MICE rates, premium lounges, and personalized assistance. On the ground, the Shinkansen rail system allows for rapid and punctual travel throughout the country, while frequent domestic flights reach even the most remote islands such as Okinawa, Amami, and Yakushima. Local partners ensure seamless organization even for complex events, offering technical support, interpretation, VIP hospitality, and tailored cultural experiences. In Japan, precision becomes an integral part of the MICE experience, transforming every event into a harmonious flow between time, space, and content.





# CHARTER FLIGHTS

## REASONS TO USE THEM

Charter flights are private or semi-private flights rented specifically for specific needs, such as business trips, corporate events, or group transportation. They are widely used by companies seeking flexibility, time savings, and comfort.

- Flexibility to decide on times and airports (even the less busy ones)
- Save time: No queues, long checks and waits at commercial airports
- Privacy and comfort: Perfect for working or meeting on board
- Access to secondary airports: Often closer to business destinations

Book your charter flight now with our support and experience the difference!



## ANCILLARY SERVICES

**We can assist with visa arrangements, currency exchange, advance luggage shipment, work materials, and insurance policies for cancellation, lost baggage, and medical care**



# JAPAN - KANTO REGION

## BETWEEN AVANTGARDE METROPOLIS, SACRED LANDSCAPES AND SILENT INNOVATION

The Kanto region is the beating heart of contemporary Japan, yet it also harbors an ancient and contemplative soul. From the glittering skyscrapers of Tokyo to the temples nestled in the tranquil hills of Nikko, from the artisan workshops of Saitama to the peaceful beaches of the Bōsō Peninsula, Kanto is a perfect crossroads for MICE events that seek to combine innovation, elegance, and a profound connection with the environment. It's a region where anything is possible: futuristic brainstorming sessions in panoramic towers, zen team building amidst sacred groves, and regenerative moments in hidden onsen. Here, Japan expresses itself in every nuance: ultra-technological, refined, hospitable, and inspiring.

## ACCESSIBILITY AND HOSPITALITY

Easily accessible via Tokyo Haneda International Airport (HND) and Narita Airport (NRT), Kanto is a global hub served by ANA and Japan Airlines, which offer some of the world's most advanced business class: private cabins, gourmet catering, high-speed Wi-Fi, and personalized services for MICE groups. On the ground, shinkansen trains and subway networks ensure rapid and punctual transfers between cities and remote locations, even at unconventional times. Accommodations range from skyscrapers designed by international chains to designer ryokans with tatami rooms for private meetings. Japanese hospitality is expressed in the utmost attention to detail, from the welcoming tea ceremony to technical support for conferences and hybrid presentations. Expert local suppliers guarantee seamless, multilingual assistance that respects company protocols.

## EXPERIENCES THAT INSPIRE AND UNITE

Kanto offers a wide variety of unconventional experiences for corporate groups. In Tokyo, strategic meetings can be held in skyscrapers overlooking Mount Fuji, followed by nighttime itineraries of digital art and futuristic cocktails in the most creative districts. In Kamakura, team-building sessions among Zen temples and calligraphy workshops foster focus and introspection. Nikko, with its shrines surrounded by greenery, is perfect for leadership and resilience workshops. Saitama and Gunma offer experiences related to local crafts (ceramics, weaving, sake), useful for developing cohesion and creativity. On the Ibaraki Peninsula and along the Chiba coast, seaside retreats, relaxing walks, and outdoor activities can be organized in less touristy yet highly evocative settings.

## THE IDEAL SEASONS FOR EVERY TYPE OF EVENT

- **Spring (March–May):** the most poetic time for events among the cherry blossoms, perfect for emotional **incentives** and city-to-nature itineraries
- **Summer (June–August):** lively season, ideal for seaside **events**, **creative programs** and discovering local festivals (matsuri)
- **Autumn (September–November):** a time of color and contemplation, perfect for strategic **workshops** and immersive activities among red maple forests
- **Winter (December–February):** suitable for high-quality indoor **events**, onsen experiences, kaiseki **dinners**, and moments of silent regeneration



# JAPAN – HOKKAIDŌ REGION

## AMONG ETERNAL SNOWS, DEEP SILENCES AND REGENERATING NATURE

Hokkaido represents the wildest, most authentic, and rejuvenating side of Japan. A northern island of vast expanses, silent volcanoes, crystal-clear lakes, and human-scale cities, it's a place where time slows and every experience takes on a profound meaning. Perfect for MICE events that seek to break away from conventional routes, Hokkaido welcomes with its unique blend of Nordic landscapes, Ainu culture, culinary excellence, and discreet hospitality. From hot springs nestled in the woods to conference rooms overlooking snow-capped expanses, every meeting is charged with new energy, inspiration, and a sense of belonging.

## ACCESSIBILITY AND HOSPITALITY

Hokkaido is connected to the rest of Japan and the world via New Chitose International Airport (CTS), about 40 minutes from Sapporo, and other regional airports (Hakodate, Asahikawa, Memanbetsu). ANA (All Nippon Airways) and Japan Airlines operate frequent domestic flights from Tokyo and Osaka with dedicated services for business groups, including priority check-in, quiet cabins, and premium on-board catering. On the ground, the extensive high-speed rail network and private shuttles allow seamless travel even to more remote locations. The MICE offering includes charming hotels, contemporary ryokans, alpine resorts with spas, and conference centers immersed in nature. Local operators are accustomed to hosting corporate events and offer impeccable, discreet organization, attentive to environmental and cultural sustainability.

## EXPERIENCES THAT INSPIRE AND UNITE

In Hokkaido, MICE experiences are rooted in authenticity and direct contact with nature. In Niseko or Furano, retreats can be organized among the snow-capped mountains, team coaching sessions after sunset snowshoe hikes, or workshops in scented wooden lodges. In Sapporo, amid European architecture and urban parks, conferences are held in relaxed settings followed by food tours to discover artisanal ramen and local beers. The hot springs of Noboribetsu or Jozankei are ideal for team wellness activities and relaxation in volcanic waters. In Ainu communities, meetings on the theme of identity and cultural inclusion can be organized, with traditional craft workshops and oral storytelling under the stars. Volcanic lakes like Toya or Shikotsu become the backdrop for immersive events on the water, while the northern coast offers unique marine excursions, among icy cliffs and seals.

## THE IDEAL SEASONS FOR EVERY TYPE OF EVENT

- **Spring (April–May):** a short but intense season, perfect for regenerative **events** during the late cherry blossom season and for **retreats** in still snow-covered mountain areas
- **Summer (June–August):** ideal for nature-filled **workshops**, excursions, **team building** in national parks, and rural itineraries in the Biei and Tokachi countryside
- **Autumn (September–November):** intense colors and profound silences: perfect for leadership **incentives**, spa experiences, and introspective moments
- **Winter (December–March):** Hokkaido's signature season, featuring pure snow, winter sports, corporate ice-breaking activities, and light shows at snow festivals (such as the one in Sapporo)



# JAPAN – TŌHOKU REGION

## WHERE TIME SLOWS DOWN, NATURE SPEAKS, AND TRADITIONS GUIDE THE FUTURE

Tōhoku is the hidden Japan, one that can only be discovered slowly and carefully. A region that enchants with its mountain landscapes, rugged Pacific coastlines, timeless hot spring villages, and the quiet strength of its traditions. It is here that the spirituality of the past meets the resilience of the present, making the region ideal for MICE events that seek to inspire transformation, rootedness, and profound visions. From the castles of Aizu Wakamatsu to the trails of Dewa Sanzan, passing through the rice paddies of Yamagata and the coasts of Sanriku, every place becomes the setting for encounters that leave a lasting impression.

## ACCESSIBILITY AND HOSPITALITY

Tōhoku is easily accessible from Tokyo thanks to the Shinkansen bullet train, which connects the region's main cities—Sendai, Morioka, and Aomori—in just a few hours, with frequent connections and first-class services, ideal for business groups. ANA and JAL operate domestic flights from Haneda and Itami to local airports such as Sendai, Aomori, Akita, and Yamagata. The airports are equipped for corporate groups with dedicated lounges and services. MICE facilities range from modern hotels in urban centers to charming ryokans in mountain villages, from conference rooms immersed in nature to cultural centers overlooking the ocean. Local operators are expert in creating tailor-made programs with a focus on quality hospitality, sustainability, and local storytelling.

## EXPERIENCES THAT INSPIRE AND UNITE

In Tōhoku, every experience is a journey within oneself and into the heart of authentic Japan. In Zao and Hachimantai, retreats are organized immersed in forests and volcanoes, with team-building activities in the woods, snowshoe hikes, and rejuvenating baths in onsen. In Sendai, a dynamic and cultured city, strategic meetings can be held followed by kaiseki cooking experiences in historic residences or tours of the country's most renowned sake breweries. In the villages of Iwate or Yamagata prefecture, teams can participate in craft workshops, rural tea ceremonies, and work sessions in Zen temples. On the Sanriku coast, reborn after the tsunami, workshops on resilience and change can be held in cutting-edge facilities and deeply symbolic settings. Mount Haguro and its 2,446 steps become the perfect metaphor for paths of personal and professional growth, immersed in the sacred groves of Shugendō.

## THE IDEAL SEASONS FOR EVERY TYPE OF EVENT

- **Spring (April–May):** perfect for **incentives**, temple **meetings**, and walks among cherry blossoms and rebirth rituals
- **Summer (June–August):** ideal for local festival **events** (such as Sendai's Tanabata or Aomori's Nebuta), community experiences, and **team building** in nature
- **Autumn (September–November):** a season of colors and reflection, suitable for introspective **workshops**, spa stays, and activities related to rural culture
- **Winter (December–March):** abundant snow and deep silence: perfect for **retreats** in the snow-capped mountains, **team coaching**, and onsen immersions



# JAPAN – HOKURIKU & SHINETSU REGION

## AMONG MAJESTIC MOUNTAINS, ENDLESS RICE FIELDS AND ENCHANTING VILLAGES

The Hokuriku & Shinetsu region is a corner of Japan where spectacular nature intertwines with a profound and authentic cultural heritage. From the alpine panoramas of the Japanese Alps to the wild shores of the Sea of Japan, passing through villages where time seems to have stood still, this area is a gem for MICE events seeking immersion and inspiration. The cities of Kanazawa, Toyama, and Nagano offer modern spaces for meetings and conferences, while the Shinano valleys are perfect for retreats and team building sessions centered on nature and local crafts. A land where tradition and innovation interact in a surprising balance, capable of astonishing even the most seasoned travelers.

## ACCESSIBILITY AND HOSPITALITY

Hokuriku & Shinetsu is served by regional airports such as Komatsu, Toyama, and Niigata, with domestic flights connecting to the major hubs of Tokyo, Osaka, and Nagoya. The Hokuriku Shinkansen train lines provide rapid, comfortable access to Kanazawa, Toyama, and Nagano with modern trains. ANA and JAL operate domestic flights to regional airports, offering business class services dedicated to MICE groups. Accommodations range from designer hotels to traditional ryokans with onsen, from state-of-the-art event spaces to mountain resorts with breathtaking views. Local operators are experienced in managing MICE programs, with a focus on authentic cultural experiences and the well-being of participants.

## EXPERIENCES THAT INSPIRE AND UNITE

Hokuriku & Shinetsu offers unconventional activities to build strong bonds and stimulate creativity. In Kanazawa, you can organize art workshops in the historic samurai district or culinary tours of the fish markets, complete with tastings of top-quality sushi and sake. In the heart of the Japanese Alps, in Nagano and around Hakuba, team-building activities take place in nature, from skiing to summer hikes, including relaxing walks through centuries-old cedar forests. The UNESCO World Heritage villages of Shirakawa-go and Gokayama offer unique settings for exclusive gatherings and workshops on traditional crafts, such as washi weaving or ceramics. For those seeking relaxation and regeneration, the hot springs of Kaga Onsen or Nozawa Onsen are the perfect place to end a work day.

## THE IDEAL SEASONS FOR EVERY TYPE OF EVENT

- **Spring (March–May):** ideal for outdoor **events** among the cherry blossoms, visits to Zen gardens, and walks through the green landscapes
- **Summer (June–August):** perfect for trekking, outdoor sports, and traditional festivals, with mild temperatures and clear skies
- **Autumn (September–November):** a magical season to admire the warm colors of the Alpine forests and organize nature photography **workshops**
- **Winter (December–February):** an invitation to a snowy **retreat**, with skiing, spa treatments, and **team building** sessions in intimate, welcoming environments



# JAPAN – TOKAI REGION

## BETWEEN LIVELY COASTS, ICONIC VOLCANOES AND THOUSAND-YEAR-OLD TRADITIONS

The Tokai region is a land of dynamic contrasts, where the crystal-clear Pacific Ocean meets spectacular mountain landscapes and cities rich in history and innovation. This area, encompassing cities such as Nagoya, Shizuoka, and Hamamatsu, is perfect for MICE events that combine modernity and culture, nature and technology. The famous Mount Fuji dominates the horizon, offering an inspiring symbol for any corporate program. From historic sites to natural parks, beaches to hot springs, Tokai is an ideal setting for team building, incentives, and immersive workshops that combine professionalism with moments of authentic discovery.

## ACCESSIBILITY AND HOSPITALITY

The Tokai region is well connected thanks to the airports of Nagoya (Chubu Centrair International) and Shizuoka, as well as an efficient rail network with the Tokaido Shinkansen, which quickly connects it to Tokyo and Osaka. ANA and JAL offer domestic and international flights with premium services dedicated to MICE groups. The hotel offering ranges from high-end business hotels to traditional hot spring resorts with onsen, not to mention boutique hotels immersed in nature. Experienced operators guarantee VIP hospitality services, personalized logistics, and tailor-made activities, with a focus on sustainable and high-quality events.

## EXPERIENCES THAT INSPIRE AND UNITE

Tokai offers unique experiences that combine culture and nature. In Nagoya, you can organize exclusive visits to the castle and innovative museums, or team building activities centered on technology and automotive design, the city's hallmark. In the coastal areas of Shizuoka, participants can try traditional fishing or taste green tea in plantations, balancing work and relaxation. Mount Fuji is the ideal setting for hikes and relaxing walks at sunrise, while the nearby Hakone hot springs offer an oasis of well-being after a busy day at work. For the more adventurous, kayaking excursions or visits to the Izu caves offer unique moments of sharing and inspiration.

## THE IDEAL SEASONS FOR EVERY TYPE OF EVENT

- **Spring (March–May):** the season of cherry blossoms and cool spring days, perfect for outdoor **events** and cultural **incentives**
- **Summer (June–August):** ideal season for water activities, mountain trekking and traditional festivals along the coast
- **Autumn (September–November):** a time of foliage and mild temperatures, ideal for nature **workshops** and food tours
- **Winter (December–February):** an opportunity for **retreats** in hot springs and **team building** programs in intimate and relaxing environments



# JAPAN – KANSAI REGION

## BETWEEN CENTURIES-OLD TRADITION, LIVELY CITIES AND TIMELESS LANDSCAPES

The Kansai region is the cultural and historical heart of Japan, where ancient cities like Kyoto, Nara, and Osaka coexist with a contemporary vibrancy and entrepreneurial dynamism. This land of ancient temples, Zen gardens, and cutting-edge business districts is fertile ground for MICE events that seek to blend innovation and tradition. The streets of Kyoto tell stories of master craftsmen and samurai, while Osaka pulsates with creative and gastronomic energy. Kansai is an ideal stage for programs that seek to inspire, connect, and regenerate teams in surprising and enriching environments.

## ACCESSIBILITY AND HOSPITALITY

The Kansai region is served by Kansai International Airport (KIX), one of East Asia's major hubs, and Osaka Itami Airport for domestic flights. The Shinkansen (high-speed rail) and local rail networks ensure rapid travel between major cities, facilitating itinerant MICE programs. ANA, JAL, and other airlines offer high-quality business class services, including VIP lounges and dedicated assistance for corporate groups. The extensive hotel offering ranges from luxury hotels with state-of-the-art conference facilities to traditional ryokans for more intimate and cultural experiences, supported by operators specialized in MICE logistics and hospitality.

## EXPERIENCES THAT INSPIRE AND UNITE

Kansai is brimming with unique activities that blend business and culture. In Kyoto, team-building sessions can take place in Zen gardens or with pottery and calligraphy workshops, immersing participants in creativity. Osaka offers dynamic incentive opportunities, from cooking shows with Michelin-starred chefs to food tours through the vibrant streets of Dotonbori. Nara offers moments of quiet and reflection in its parks populated by sacred deer, ideal for retreats and regenerative workshops. Hiking in the mountains of Koya-san and visits to historic temples round out an experiential offering that combines inspiration and group cohesion.

## THE IDEAL SEASONS FOR EVERY TYPE OF EVENT

- **Spring (March–May):** cherry blossom season, perfect for outdoor **incentives** and cultural celebrations
- **Summer (June–August):** ideal for lively city **events** and outdoor activities such as traditional festivals
- **Autumn (September–November):** a period of warm colors and mild climate, excellent for cultural tours and corporate **retreats**
- **Winter (December–February):** a suitable season for indoor programs and stays in ryokan with onsen, for moments of relaxation and **networking**



# JAPAN – CHUGOKU REGION

## AMONG EVOCATIVE COASTS, THOUSAND-YEAR-OLD HISTORY AND SURPRISING INNOVATION

The Chugoku region, located in the western part of Honshu Island, is a mosaic of pristine coastal landscapes, historic cities, and centers of innovation. Ancient traditions and contemporary dynamics intertwine here, offering a stimulating environment for off-the-beaten-path MICE events. Hiroshima and Okayama tell profound stories of rebirth and resilience, while small villages and natural parks offer ideal spaces for reflection and team building in evocative settings. Between sacred temples, imposing castles, and wild beaches, Chugoku lends itself to corporate programs that aim to surprise with authentic and engaging experiences.

### ACCESSIBILITY AND HOSPITALITY

The region is served primarily by Hiroshima and Okayama airports, connected by domestic and international flights. The Shinkansen rail network provides rapid connections to Japan's major cities, facilitating dynamic and flexible MICE itineraries. Airlines such as ANA and JAL offer high-quality business class services, including VIP lounges and dedicated group assistance. Accommodation options range from urban hotels in Hiroshima and Okayama, equipped with modern meeting rooms, to traditional ryokans immersed in nature, for more intimate and cultural experiences, always supported by specialized event and logistics operators.

### EXPERIENCES THAT INSPIRE AND UNITE

In Chugoku, team building and incentive activities blend tradition and innovation. Hiroshima offers peace and resilience workshops, with visits to the Peace Park and Peace Museum, unique opportunities for reflection and strengthening cohesion. Okayama is famous for its Korakuen gardens, ideal for outdoor strategic meetings and relaxing strolls. The Miyajima Islands, a UNESCO World Heritage Site, offer magical settings for rejuvenating hikes and storytelling sessions around the torii gate immersed in the sea. The wild coastlines and tranquil beaches are perfect for sports activities and shared relaxation.

### THE IDEAL SEASONS FOR EVERY TYPE OF EVENT

- **Spring (March–May):** cherry blossom season, ideal for outdoor **events** and nature **incentives**
- **Summer (June–August):** great for local festivals, coastal activities, and active programs
- **Autumn (September–November):** the perfect time for corporate **retreats**, cultural tours, and **team building** amidst the warm colors of nature
- **Winter (December–February):** suitable for indoor **workshops**, ryokan stays, and relaxing spa breaks



# JAPAN – SHIKOKU REGION

## BETWEEN ANCIENT SPIRITUALITY, UNCONTAMINATED NATURE AND LIVING TRADITIONS

Shikoku, the smallest of Japan's four main islands, is a place where spirituality blends with rare natural beauty and deeply rooted craftsmanship. Best known for the famous 88-temple pilgrimage, this region offers an authentic MICE experience, far from conventional circuits. Between mountains, rugged coastlines, and verdant valleys, Shikoku offers an ideal setting for events seeking depth, regeneration, and a genuine connection with Japanese culture. Here, the past lives in the present, in an atmosphere of peace and inspiration.

## ACCESSIBILITY AND HOSPITALITY

Shikoku is accessible via Takamatsu, Matsuyama, and Tokushima airports, with domestic flights connecting the region to Japan's major hubs. The transportation network, including local trains and buses, allows for efficient and scenic travel between cities and natural areas. ANA and JAL airlines operate these routes with high-quality business services, perfect for MICE groups. Accommodation options range from modern hotels in the main cities to traditional ryokans immersed in nature, ensuring comfortable experiences rich in traditional Japanese hospitality.

## EXPERIENCES THAT INSPIRE AND UNITE

MICE experiences in Shikoku stand out for their connection to the local area and tradition. Team-building sessions can be organized along the pilgrimage route, and fascinating temple visits can be organized. Hikes in the Iya Gorge, amidst suspension bridges and breathtaking landscapes, offer exciting adventures and moments of bonding. Local craft workshops, from weaving to woodworking, engage participants in unique creative and cultural activities. Natural hot springs, known as onsen, complete the experience with moments of relaxation and regeneration for body and mind.

## THE IDEAL SEASONS FOR EVERY TYPE OF EVENT

- **Spring (March–May):** ideal for outdoor itineraries among cherry blossoms and the first warm days, perfect for nature **incentives**
- **Summer (June–August):** suitable for traditional festivals, rafting and adventurous activities in the gorges
- **Autumn (September–November):** perfect time for corporate **retreats** immersed in the warm colors of the forests and cultural visits
- **Winter (December–February):** ideal for indoor **workshops**, spa stays, and **team building** activities in intimate, authentic settings



# JAPAN – KYUSHU REGION

## BETWEEN ACTIVE VOLCANOES, RELAXING SPAS AND EVER-EVOLVING TRADITIONAL CULTURES

Kyushu, Japan's southern island, is a land of fascinating contrasts: from majestic smoking volcanoes to tranquil hot springs, from ancient historic cities to vibrant contemporary urban centers. This region enchants with its mix of wild nature, cultural traditions, and innovation, making it an ideal MICE destination for events seeking a balance between dynamism and regeneration. From unique natural landscapes to vibrant cities like Fukuoka and Nagasaki, Kyushu invites you to discover authentic, off-the-beaten-path experiences.

## ACCESSIBILITY AND HOSPITALITY

Kyushu is served by several international and domestic airports, including Fukuoka, Kumamoto, Nagasaki, and Kagoshima, with direct flights from Tokyo, Osaka, and several international destinations. Airlines such as ANA and JAL offer business and first-class comfort, perfect for MICE travel. The region also has an efficient rail network with the famous Kyushu Shinkansen, allowing for rapid and scenic travel. Accommodation options are wide and varied, from large city hotels to traditional ryokans with private onsen, ideal for team-building programs and relaxation.

## EXPERIENCES THAT INSPIRE AND UNITE

Kyushu offers a range of unconventional MICE activities that combine nature, culture, and innovation. Corporate meetings can be held in the natural parks at the foot of Mount Aso, one of the world's largest active volcanoes, for strategic sessions immersed in the power of nature. Traditional pottery workshops in Arita or Imari, famous for their porcelain, foster creativity and teamwork. Teams can enjoy regenerative experiences in the natural onsen of Beppu or Kurokawa, while boat excursions in Yakushima National Park, a UNESCO World Heritage Site, offer immersion in ancient forests. Visits to historic sites linked to international trade in Nagasaki also add a cultural and historical dimension to events.

## THE IDEAL SEASONS FOR EVERY TYPE OF EVENT

- **Spring (March–May):** perfect season for outdoor **incentives** among cherry blossoms and strolls in coastal towns
- **Summer (June–August):** ideal for water activities, traditional festivals, and **team building** sessions in nature parks
- **Autumn (September–November):** a time of peak scenic splendor for excursions, **retreats**, and cultural programs
- **Winter (December–February):** a perfect time for spa experiences, indoor **workshops**, and stays in welcoming, intimate spaces



# JAPAN – OGASAWARA ARCHIPELAGO

## AMONG REMOTE ISLANDS, UNSPOILED NATURE AND UNIQUE TEAM BUILDING EXPERIENCES

The Ogasawara Archipelago, also known as the Bonin Islands, is a hidden treasure in the Pacific Ocean, approximately 1,000 km south of Tokyo. This group of remote islands, a UNESCO World Heritage Site, offers an extraordinarily pristine natural environment, where biodiversity and breathtaking landscapes create the perfect backdrop for MICE events seeking exclusivity and regeneration. The Ogasawara Archipelago combines white sand beaches, crystal-clear waters, and subtropical forests, offering an experience far from the urban chaos, ideal for moments of reflection and connection.

## ACCESSIBILITY AND HOSPITALITY

The archipelago is accessible primarily by boat from Tokyo, with a crossing of approximately 24 hours, which in itself represents a moment of decompression and connection for participants. For selected MICE groups, customized transfers and dedicated cruises can be arranged. Although accommodations are limited, there are welcoming eco-sustainable resorts and guesthouses offering genuine, environmentally-conscious hospitality. Island life encourages direct contact with nature and simplified logistics, perfect for corporate retreats and immersive workshops.

## EXPERIENCES THAT INSPIRE AND UNITE

Activities in Ogasawara are unique and offer a profound connection with nature: snorkeling and diving among pristine coral and sea turtles, guided dolphin and whale watching excursions, trekking through endemic tree forests, and bird watching for rare species. Workshops dedicated to environmental sustainability and conservation are highly educational and motivating for corporate teams. The absence of technological distractions and total immersion in the pristine landscape foster moments of sharing, creative brainstorming, and strengthening bonds.

## THE IDEAL SEASONS FOR EVERY TYPE OF EVENT

- **Spring (March–May):** ideal season for water activities and trekking in a mild and pleasant climate
- **Summer (June–August):** perfect for diving and snorkeling, with warm, clear waters
- **Autumn (September–November):** excellent time for marine wildlife observation and birdwatching
- **Winter (December–February):** a quieter season, suitable for regenerative **retreats** and indoor **workshops** in eco-friendly facilities



# JAPAN – OKINAWA ARCHIPELAGO

## **BETWEEN TROPICAL SEA, UNIQUE CULTURE AND IMMERSIVE EXPERIENCES FOR THE TEAM**

The Okinawa archipelago is a true subtropical paradise in southern Japan, renowned for its crystal-clear beaches, vibrant coral reefs, and rich and distinctive cultural heritage. This region offers an ideal setting for MICE events that seek a balance between pristine nature, dynamic activities, and cultural immersion. Okinawa is perfect for creative team building, outdoor workshops, and relaxing moments in picture-perfect settings, far from the chaos of major cities. Here, Ryukyu tradition blends with modernity, creating unique and inspiring atmospheres.

## **ACCESSIBILITY AND HOSPITALITY**

The archipelago is easily accessible with direct flights from Tokyo, Osaka, and other major cities to Naha Airport, Okinawa's main gateway. Airlines such as Japan Airlines and ANA offer high-quality business class services, ideal for MICE groups. The region boasts a wide and diverse accommodation selection, from luxury beachfront hotels to eco-friendly resorts to boutique hotels immersed in nature. Group services include dedicated transfers, state-of-the-art meeting rooms, and personalized assistance, perfect for corporate events of all sizes.

## **EXPERIENCES THAT INSPIRE AND UNITE**

Okinawa offers unique experiences: snorkeling and diving on one of Japan's largest coral reefs, kayaking through tranquil bays, and cultural tours of traditional Ryukyu villages with workshops showcasing local crafts such as weaving and pottery. Teams can participate in traditional cooking workshops, learn local martial arts techniques, or visit Shinto shrines, fostering teamwork and personal discovery. Hikes in the subtropical forest and relaxing walks on the beach round out an offering that blends nature, culture, and innovation.

## **THE IDEAL SEASONS FOR EVERY TYPE OF EVENT**

- **Spring (March–May):** mild climate, ideal for outdoor activities and cultural tours
- **Summer (June–August):** perfect for seaside experiences, water sports, and outdoor events
- **Autumn (September–November):** ideal season for trekking and discovering subtropical flora
- **Winter (December–February):** cooler but still pleasant weather for indoor **workshops** and restorative **retreats**



# AUTHENTIC AND SURPRISING JAPAN: A JOURNEY THROUGH TRADITION, INNOVATION, AND SECRET ISLANDS.

## ITINERARY – INTEGRATED MICE

### DAY 1 – HOKKAIDO AND TOHOKU: WILD NATURE AND RURAL CULTURE

The journey begins in the North, among the vast forests and mountains of **Hokkaido**, where pristine nature inspires depth and regeneration. Here, the team immerses themselves in a traditional pottery workshop in **Biei**, working with local artisans and discovering ancient techniques that tell stories of resilience. In the afternoon, they explore Ainu culture, participating in an authentic experience of storytelling and music, little known to mass tourism. The day concludes with a convivial dinner of seasonal specialties, including smoked salmon and mountain vegetables, in a ryokan immersed in nature. This first day is an invitation to slow down and forge deep connections with the culture and colleagues.

### DAY 2 – KANTO AND OGASAWARA ISLAND: INNOVATION AND UNSPOILED NATURE

From the hustle and bustle of **Tokyo**, the group flies to the remote **Ogasawara archipelago**, over a thousand kilometers from the mainland. Here, coral reefs, deserted beaches, and unique biodiversity become the backdrop for a team building experience centered on sustainable exploration: snorkeling among sea turtles, kayaking in secluded coves, and a nature photography workshop. This immersion in silence and wonder fosters unprecedented creativity and collaboration. In the evening, an exclusive dinner under the stars, accompanied by stories about the history of these UNESCO World Heritage islands, creates moments of profound sharing.

### DAY 3 – KANSAI AND SHIKOKU: ARTISANAL TRADITION AND RELAXATION

Back on the mainland, the team travels to the **Kansai region**, the historical and cultural heart of Japan, where **Kyoto** and **Nara** offer ideal settings for meetings and innovative workshops in ancient temples and Zen gardens. In the morning, a relaxing walk opens the mind and calms the senses, followed by a natural weaving and dyeing workshop in **Tokushima**, on the island of **Shikoku**, known for its artisanal traditions. The afternoon is dedicated to discovering ancient pilgrimage routes, walking together through sacred groves and hidden temples, a bonding and reflective experience that reinvigorates team spirit.

### DAY 4 – CHUGOKU AND KYUSHU: RURAL INNOVATION AND REGENERATING NATURE

The journey continues westward, into the **Chugoku region** and then into **Kyushu**, where the contrast between volcanic nature and rural innovation offers fertile ground for creative events. In **Hiroshima**, the group visits a green startup center developing eco-sustainable technologies, with interactive workshops on innovation and social responsibility. In the afternoon, in the heart of **Kyushu**, they explore the active **Aso volcano** with trekking activities and team challenges, followed by a regenerative experience in natural hot springs. These moments of connection with the earth and with colleagues enhance creativity and collective well-being.

### DAY 5 – OKINAWA AND THE REMOTE ISLANDS: CRYSTAL-CLEAR SEA AND ANCIENT CULTURE

The final stop takes the group to the subtropical paradise of **Okinawa**, where unconventional outdoor activities such as sunset paddleboarding and traditional Ryukyu cooking workshops with local chefs take place. A boat excursion to remote islands, past deserted beaches and coral reefs, creates a unique team-building experience, immersed in an environment that evokes calm and wonder. The day concludes with a visit to an ancient shrine and a gala dinner with a traditional show. This final day concludes the trip on a note of harmony and profound inspiration.



## **WOULD YOU LIKE A FREE QUOTE?**

**We hope you enjoyed this travel planner and inspired your next business MICE travel.**

**If you want to organize your next business ( MICE ) travel with us, all you have to do is follow the two steps indicated in the following pages.**

**We will do everything possible to prepare a tailor-made program and quotation for excellent value for money.**



# JOIN THE ATLANTIC CORPORATE CLUB

It will allow us to know all your needs in terms of business  
(MICE) travel and to reward you with tailor-made  
services

[JOIN](#)



# REQUEST YOUR QUOTE

Fill out and send the form with all the details and  
you will receive your free quote

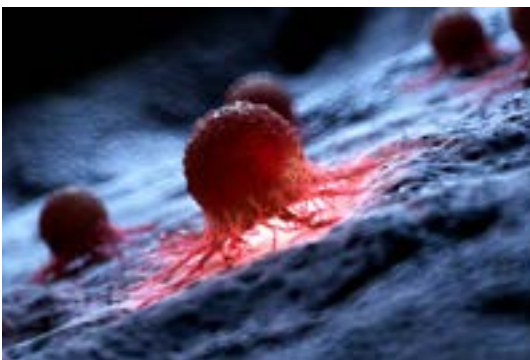
QUOTE




## **OUR SUPPORT FOR SAFEGUARDING THE PLANET AND CANCER RESEARCH**



WITH OUR TRAVELS, WE WANT TO OFFER OUR CUSTOMERS THE OPPORTUNITY TO CONTRIBUTE TO NON-PROFIT ORGANIZATIONS COMMITTED TO SOLVING THE FOLLOWING GLOBAL PROBLEMS



- CONSERVATION OF FLORA - FAUNA
- GLOBAL WARMING
- CANCER RESEARCH



# Atlantic Travel & Tours Ltd

London, New York  
Los Angeles, Miami  
Denver

## **ATLANTIC TRAVEL & TOURS LTD**

**HEADQUARTERED IN THE UNITED STATES AND THE UNITED KINGDOM**

### **REGISTERED COMPANIES**

USA - DENVER - COLORADO - COMPANY REGISTRATION NUMBER: 202 110 96 014

UK - LONDON - COMPANY REGISTRATION NUMBER: 130 288 33

### **E-MAIL**

USA - [unitedstatesadministration@atlantictourstravel.com](mailto:unitedstatesadministration@atlantictourstravel.com)

UK - [unitedkingdomadministration@atlantictourstravel.com](mailto:unitedkingdomadministration@atlantictourstravel.com)

### **WEBSITE**

[www.visitatlantictraveltours.com](http://www.visitatlantictraveltours.com)

### **FULL CONTACT DETAILS**

[www.visitatlantictraveltours.com/contact](http://www.visitatlantictraveltours.com/contact)