

# ATLANTIC TRAVEL & TOURS

EDUCATIONAL TRAVELS FOR SCHOOLS,  
UNIVERSITIES, CULTURAL INSTITUTIONS

---

JAPAN  
INSPIRATIONAL BROCHURE



## FROM THE CEO

---

Dear educators, researchers, and cultural professionals,

Atlantic Travel & Tours is your dedicated partner in organizing **tailor-made journeys** for **secondary schools, universities, and cultural institutions**. This brochure presents a curated selection of **interdisciplinary itineraries** across Japan, designed to meet the specific needs of each type of organization:

- **Secondary Schools - Dynamic and exploratory educational journeys**
- **Universities - In-depth research and experiential learning opportunities**
- **Cultural Institutions - Cultural exchange and heritage-focused projects**

Each itinerary is crafted to foster active learning and engagement, combining **innovative content with authentic places**.

We understand that every group has different goals and timelines. That's why we offer **full customization of duration, themes, and activities**—ensuring a truly unique and tailored experience.

Our team will support you at every stage, from planning to execution, guaranteeing **flexibility, high-quality service, and strong educational value**.

Choose Atlantic Travel & Tours to turn your journeys into memorable experiences of growth and exchange.



*Steve Tabacchi*

DR. STEVE TABACCHI  
CEO - FOUNDER  
ATLANTIC TRAVEL & TOURS

# JAPAN

## BETWEEN CONTINUOUS INNOVATION, LIVING HERITAGES AND EDUCATIONAL ARCHIPELAGOS

Japan is an archipelago balanced between technological acceleration and cultural depth. From large urban centers to peripheral islands, the country offers schools, universities, and cultural institutions a field of multidisciplinary exploration. Its educational fields range from robotics to the tea ceremony, from experimental urban planning to the resilience of island communities. Secondary schools can explore educational models, symbolic environments, and ecological citizenship. Universities find a laboratory for research on sustainability, social innovation, and collective memory. Cultural institutions engage with art centers, foundations, temples, and local archives. From Tōhoku to Okinawa, Japan proves to be an educational ecosystem capable of connecting the future and tradition.





## NORTHERN JAPAN

### HOKKAIDŌ REGION

Vast, remote, and wild, Hokkaido is a land of harsh climates, vast natural parks, and the historic presence of the Ainu people. It's an ideal place to explore subarctic biodiversity and cultural minorities.

**Secondary schools:** analyze cold-weather ecosystems, forest resources, and climate sustainability.

**Universities:** they study indigenous rights, rural resilience, and intercultural coexistence.

**Cultural institutions:** they launch projects with museums and Ainu communities on language, memory, and art.



## NORTHERN JAPAN

### TŌHOKU REGION

Scarred by the 2011 earthquake and tsunami, this region is an example of social and environmental rebirth. Among rice paddies, shrines, and artisan villages, it's possible to explore the relationship between disaster and regeneration.

**Secondary schools:** exploring post-disaster, renewable energy, and agricultural culture.

**Universities:** conduct research on post-crisis governance, social cohesion, and environmental risk.

**Cultural institutions:** working on memory archives, post-earthquake art, and community theater.



## NORTHWESTERN JAPAN

### HOKURIKU & SHINETSU REGION

With snow-capped mountains and ancient villages, this region is home to deeply rooted rural and artisanal knowledge. It's an ideal place to reflect on degrowth and land conservation.

**Secondary schools:** explore seasonal cycles, traditional houses, and water resources.

**Universities:** analyzing inland areas, circular economy models, and slow tourism.

**Cultural institutions:** they collaborate with workshops, ethnographic museums, and networks of farmer-artists.



## EAST-CENTRAL JAPAN

### KANTŌ REGION

Dominated by the metropolis of Tokyo, this region is simultaneously a political, cultural, and technological hub. An urban laboratory where tradition, innovation, and multiculturalism meet.

**Secondary schools:** reflect on media, global citizenship, and urban transformation.

**Universities:** they study urban governance, sustainable mobility, and social justice.

**Cultural institutions:** activate collaborations between museums, galleries, and emerging creative communities.



## SOUTH-CENTRAL JAPAN

### TŌKAI REGION

Overlooking the Pacific Ocean, it is characterized by seismic risk, industrial areas, and iconic landscapes like Mount Fuji. Here, sacredness, technology, and environmental fragility coexist.

**Secondary schools:** participate in courses on geological risk, spirituality, and the coastal environment.

**University:** they study prevention policies, Japanese religions, and urban resilience.

**Cultural institutions:** they enhance intangible heritage, local traditions, and landscape memory.



## WEST-CENTRAL JAPAN

### KANSAI REGION

Kyoto, Osaka, and Nara form the symbolic and spiritual heart of Japan. Here, Zen aesthetics, historic architecture, and philosophical practices converge in dialogue with contemporary life.

**Secondary schools:** study traditional design and Japanese cuisine.

**University:** they study urban archaeology and museology in depth.

**Cultural institutions:** they initiate projects with temples, calligraphers, masters of ceremonies, and art centers.



## WESTERN JAPAN

### CHŪGOKU REGION

Overlooking the Seto Inland Sea, this region is a place of historical memory and reflection (Hiroshima) but also of coastal communities, creative islands, and agricultural innovation.

**Secondary schools:** reflect on peace, marine ecology, and internal migration.

**University:** they study post-conflict, rural planning, and new housing models.

**Cultural institutions:** they collaborate with memorial foundations, island art networks, and local archives.



## CENTRAL INSULAR JAPAN

### SHIKOKU REGION

A spiritual island par excellence, crisscrossed by Buddhist pilgrimages and home to 88 temples. A marginal region, but one with strong social cohesion and a landscape culture.

**Secondary schools:** participate in thematic walks and workshops on spirituality and the environment.

**University:** they study popular religion, intergenerational cohesion, and the habitability of mountain areas.

**Cultural institutions:** they activate artistic and narrative itineraries along the pilgrimage and in remote villages.



## SOUTHERN JAPAN

### KYŪSHŪ REGION

A historic hub of exchange with continental Asia, Kyushu blends spirituality, volcanic energy, gastronomic culture, and religious pluralism. A fertile terrain for historical and future reflections.

**Secondary schools:** exploring volcanoes, spas, and religious interculturality.

**Universities:** they study historic ports, biodiversity, and regional geopolitics.

**Cultural institutions:** they promote intangible heritage, popular theaters, and migrant archives.



## SOUTHEASTERN JAPAN

### REMOTE OGASAWARA ISLANDS

Located in the Pacific, 1,000 km from Tokyo, the archipelago is an ecological reserve of global importance, rich in endemic species and oceanic culture.

**Secondary schools:** participate in projects on biodiversity and protected islands.

**University:** they study marine ecology, island adaptation, and scientific tourism.

**Cultural institutions:** they document local orality, maritime knowledge, and practices of coexistence with the ocean.



## SOUTHWESTERN JAPAN

### REMOTE OKINAWA ISLANDS

A crossroads of Asian cultures, Okinawa has a distinct language and traditions, a long history of autonomy, and a deep connection to the sea.

**Secondary schools:** reflect on local identity, the environment, and post-war peace.

**Universities:** they study internal coloniality, linguistic minorities, and cultural ecology.

**Cultural institutions:** they activate projects on dance, orality, and Ryukyu memory archives.



# ECOLOGIES OF TIME: SPIRITUALITY, RISK, AND THE FUTURE IN JAPAN'S GEOGRAPHIES

## AN INTERDISCIPLINARY JOURNEY TO JAPAN

Japan is a complex archipelago where ancient spirituality, advanced technologies, and ecological fragility intertwine. From mountain villages to coastal metropolises, passing through remote islands and sacred sites, the country offers a variety of educational spaces in which to explore resilience, memory, and future imaginings. This itinerary guides schools, universities, and cultural institutions through environmental risk scenarios, ritual practices, and civic experimentation. Secondary schools will reflect on climate change, local traditions, and active citizenship; universities will explore issues related to environmental governance, processes of marginalization, and social innovation; cultural institutions will launch projects focused on orality, archives, and artistic languages. Japan thus presents itself as an insular pedagogical laboratory, capable of restoring complexity and shared visions of time and space.

### DAY 1 – TŌHOKU REGION (IWATE): MEMORY, CATASTROPHE, AND RECONSTRUCTION

In an area devastated by the 2011 tsunami, **Rikuzentakata** is a city that symbolizes environmental and social reconstruction. The centerpiece of activities will be the **Miracle Pine Memorial Park** and the **Rias Ark Museum of Art**.

**Secondary schools:** reflect on natural disasters, community resilience, and the culture of prevention.

**University:** they study post-disaster management, trauma ethnography, and urban regeneration.

**Cultural institutions:** collaborate with archives and civic museums on projects on memory and narrative landscape.

### DAY 2 – KANSAI REGION (KYOTO): SPIRITUALITY, AESTHETICS AND EVERYDAY PHILOSOPHY

In **Kyoto**, the ancient imperial capital, Buddhist temples, Zen gardens, and fine craftsmanship coexist. The centerpiece will be **Kyoto University (Faculty of Humanities)** and **Ryoanji Temple**.

**Secondary schools:** participate in workshops on Japanese aesthetics and UNESCO heritage.

**University:** they study Eastern philosophy and cultural planning in depth.

**Cultural institutions:** co-design itineraries based on symbolic narratives, tangible and intangible heritage.

### DAY 3 – SHIKOKU REGION (TOKUSHIMA AND KOCHI): RURAL PRACTICES, CRAFTS, AND TERRITORIAL RESILIENCE

On the island of **Shikoku**, the mountainous interior and small coastal towns offer immersion in agricultural practices, traditional crafts, and self-sufficiency systems. The focus of the activities will be **Tokushima University (Department of Humanities and Social Sciences)** and rural cultural centers near Miyoshi and Tosa.

**Secondary schools:** participate in workshops on sustainable agriculture, food forests, and artisanal techniques.

**Universities:** they study territorial resilience strategies, resource management in isolated contexts, and social innovation in rural areas.

**Cultural institutions:** co-design oral archives, audiovisual documentation, and participatory interventions on the relationship between community and landscape.



### DAY 4 – OKINAWA ARCHIPELAGO: MINORITIES, CHORALITY, AND POST-COLONIAL MEMORY

**Okinawa**, with its Ryukyu identity and a history marked by war and resistance, is an ideal place to explore island cultures and alternative narratives. The centerpiece of the activities will be the **University of the Ryukyus** and the **Peace Memorial Park**.

**Secondary schools:** reflect on local history, insularity, and linguistic rights.

**Universities:** they analyze internal coloniality, the relationship between culture and self-determination, and historical ecology.

**Cultural institutions:** collaborate with oral archives and artistic collectives on projects on storytelling and identity.

### DAY 5 – OKINAWA (OUTLYING ISLANDS OR TRADITIONAL VILLAGES): COASTAL ECOLOGY AND COMMUNITY RESILIENCE

The second day in **Okinawa** will be dedicated to coastal communities or smaller islands like Yaeyama or Miyako, places where traditional practices and the marine environment intertwine. Activities will take place at local environmental research centers and family cooperatives.

**Secondary schools:** participate in workshops on coral ecosystems, sustainable fishing, and climate adaptation techniques.

**Universities:** they study marine biodiversity, island governance, and traditional material culture.

**Cultural institutions:** co-design interventions on intangible heritage, craftsmanship, and community soundscapes.

### DAY 6 – KYŪSHŪ REGION (NAGASAKI): RELIGIOUS COEXISTENCE AND OPENNESS TO THE WORLD

**Nagasaki** represents a unique moment in Japanese history for religious coexistence and intercultural dialogue with Asia and Europe. Its centerpiece will be **Nagasaki University** and the **Museum of Hidden Christians**.

**Secondary schools:** discover religious pluralism, the interaction between faith and politics, and Japanese Christian culture.

**University:** they delve into global studies, Asian migration, and the heritage of tolerance.

**Cultural institutions:** collaborate with local museums and communities on projects on multiculturalism and spirituality.

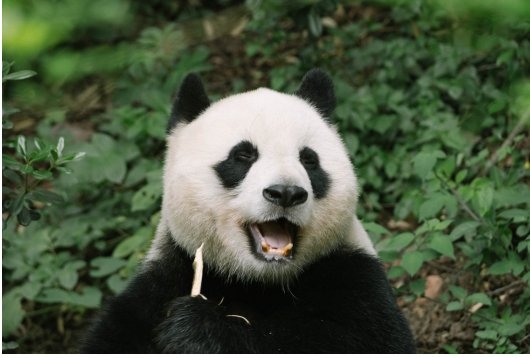


## WOULD YOU LIKE TO REQUEST A QUOTE?

We hope this brochure has been both enjoyable and inspiring for your next cultural-themed journey.

If you'd like to organize a trip with us, simply click the button below — you'll be directed to a form to fill out with all the necessary details. We'll get back to you shortly with a personalized quote tailored to your needs.

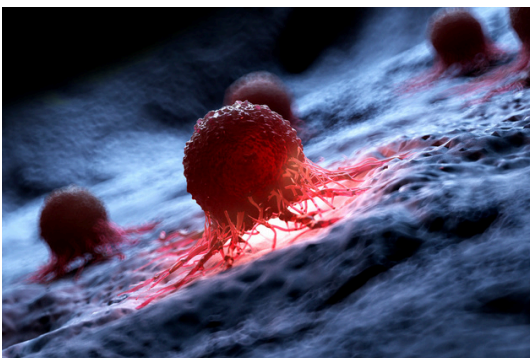
[QUOTE REQUEST](#)



## **OUR SUPPORT FOR SAFEGUARDING THE PLANET AND CANCER RESEARCH**



WITH OUR TRAVELS, WE WANT TO OFFER OUR CUSTOMERS THE OPPORTUNITY TO CONTRIBUTE TO NON-PROFIT ORGANIZATIONS COMMITTED TO SOLVING THE FOLLOWING GLOBAL PROBLEMS



- CONSERVATION OF FLORA - FAUNA
- GLOBAL WARMING
- CANCER RESEARCH



# Atlantic Travel & Tours Ltd

London, New York  
Los Angeles, Miami  
Denver

## **ATLANTIC TRAVEL & TOURS LTD**

**HEADQUARTERED IN THE UNITED STATES AND THE UNITED KINGDOM**

### **REGISTERED COMPANIES**

USA - DENVER - COLORADO - COMPANY REGISTRATION NUMBER: 202 110 96 014

UK - LONDON - COMPANY REGISTRATION NUMBER: 130 288 33

### **E-MAIL**

USA - [unitedstatesadministration@atlantictourstravel.com](mailto:unitedstatesadministration@atlantictourstravel.com)

UK - [unitedkingdomadministration@atlantictourstravel.com](mailto:unitedkingdomadministration@atlantictourstravel.com)

### **WEBSITE**

[www.visitatlantictraveltours.com](http://www.visitatlantictraveltours.com)

### **FULL CONTACT DETAILS**

[www.visitatlantictraveltours.com/contact](http://www.visitatlantictraveltours.com/contact)