

# ATLANTIC TRAVEL & TOURS

EDUCATIONAL TRAVELS FOR SCHOOLS,  
UNIVERSITIES, CULTURAL INSTITUTIONS

---

SCANDINAVIA  
INSPIRATIONAL BROCHURE



[WWW.VISITATLANTICTRAVELTOURS.COM](http://WWW.VISITATLANTICTRAVELTOURS.COM)

## FROM THE CEO

---

Dear educators, researchers, and cultural professionals,

Atlantic Travel & Tours is your dedicated partner in organizing **tailor-made journeys** for **secondary schools, universities, and cultural institutions**. This brochure presents a curated selection of **interdisciplinary itineraries** across Norway, Sweden, Finland, designed to meet the specific needs of each type of organization:

- **Secondary Schools - Dynamic and exploratory educational journeys**
- **Universities - In-depth research and experiential learning opportunities**
- **Cultural Institutions - Cultural exchange and heritage-focused projects**

Each itinerary is crafted to foster active learning and engagement, combining **innovative content with authentic places**.

We understand that every group has different goals and timelines. That's why we offer **full customization of duration, themes, and activities**—ensuring a truly unique and tailored experience.

Our team will support you at every stage, from planning to execution, guaranteeing **flexibility, high-quality service, and strong educational value**.

Choose Atlantic Travel & Tours to turn your journeys into memorable experiences of growth and exchange.



*Steve Tabacchi*

DR. STEVE TABACCHI  
CEO - FOUNDER  
ATLANTIC TRAVEL & TOURS

# SCANDINAVIA

## BETWEEN RADICAL NATURE, CULTURAL WELFARE AND EDUCATIONAL TERRITORIES

Scandinavia, encompassing Norway, Sweden, and Finland, is one of the world's most advanced regions for quality of life, sustainability, and inclusion. In this context, secondary schools can engage with cutting-edge educational models, extreme landscapes, and daily practices of active citizenship. Universities find a dynamic network of research centers, ideal for exploring topics such as climate change, green technologies, social equity, and cultural innovation. Cultural institutions can establish collaborations with museums, archives, art centers, and local communities that enhance memory, participation, and the Nordic imagination. Between fjords and forests, experimental capitals and Arctic islands, Scandinavia offers an educational ecosystem where knowledge intertwines with the environment, design with ethics, and tradition with a vision of the future





## NORTHERN NORWAY

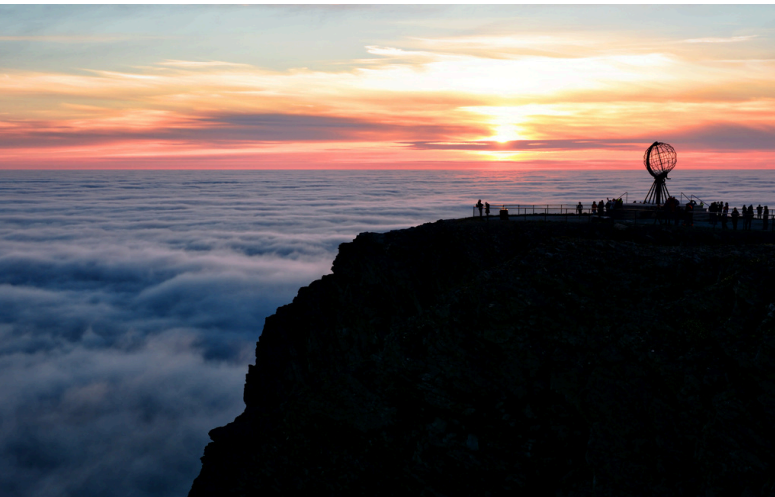
### SVALBARD ISLANDS

An Arctic archipelago of rare beauty, Svalbard is a meeting point between science, extreme environments, and geopolitics. With glaciers, Arctic wildlife, and abandoned mining settlements, this remote territory inspires profound reflections on sustainability and climate change. This evocative yet fragile context offers unique learning experiences.

**Secondary schools:** can participate in workshops on Arctic climate and environmental survival conducted in collaboration with local research centers.

**Universities:** they can conduct studies on permafrost, biodiversity, and human presence in the Arctic at the University of Svalbard (UNIS).

**Cultural institutions:** can collaborate with local archives and museums to explore mining history and Arctic narratives.



## NORTHERN NORWAY

### NORD NORGE

Continental Northern Norway extends beyond the Arctic Circle, encompassing remote fjords, rugged coastlines, and Sami communities. A frontier territory where indigenous culture intertwines with scientific research and renewable energy. A place where tradition and the future are in constant dialogue.

**Secondary schools:** can explore Sami culture with first-hand experiences at the cultural centers in Karasjok or Kautokeino.

**Universities:** they can develop projects on renewable energy, climate resilience, and indigenous rights with local academic institutions.

**Cultural institutions:** can organize residencies and research on Sami oral heritage, traditional crafts, and cultural practices.



## CENTRAL NORWAY

### TRØNDELAG

The historical and spiritual heart of Norway, Trøndelag combines university cities, fertile countryside, and pilgrimage sites. Trondheim, with its cathedral and innovative atmosphere, is a dynamic hub where research, history, and sustainability meet. An ideal region for intergenerational education.

**Secondary schools:** can participate in itineraries related to medieval history and sustainable technologies in urban and rural contexts.

**Universities:** can initiate multidisciplinary research at NTNU (Norwegian University of Science and Technology) on digitalization, green mobility, and cultural heritage.

**Cultural institutions:** they can launch collaborative projects with museums and archives to explore the connection between innovation and territorial identity.



## WESTERN NORWAY

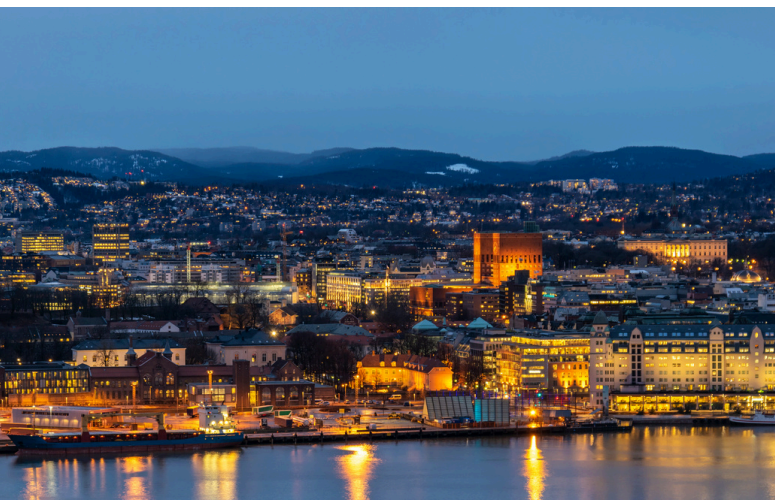
### VESTLANDET

Dominated by spectacular fjords, mountains, and small coastal villages, Western Norway is a vibrant cultural landscape. Here, nature shapes daily life and the collective imagination, offering fertile ground for projects combining ecology, memory, and creativity. Bergen, a UNESCO World Heritage Site, is the ideal starting point.

**Secondary schools:** can explore the relationships between landscape and community through narrative paths and environmental field activities.

**Universities:** they can develop studies on climate resilience, regional design, and maritime history in collaboration with local institutions.

**Cultural institutions:** they can initiate exchanges with art centers and museums to promote intangible heritage and new curatorial practices.



## EASTERN NORWAY

### ØSTLANDET

The most densely populated region in the country, Østlandet is home to Oslo and a dense network of urban centers and natural areas. Here, models of inclusion, green urban planning, and educational innovation are being tested. The blend of contemporary culture and social history makes this area a cutting-edge urban laboratory.

**Secondary schools:** can participate in workshops on rights, sustainability, and cultural mediation in the capital's multicultural neighborhoods.

**Universities:** they can launch research at the universities of Oslo and Lillehammer on social cohesion, digital transition, and urban governance.

**Cultural institutions:** can collaborate with independent spaces and large museums to develop programs on public art and sustainable cities.



## SOUTHERN NORWAY

### SØRLANDET

Bordering the North Sea, Southern Norway is dotted with small ports, lighthouses, forests, and resilient coastal communities. Its connection to the sea, sustainable fishing, and slow tourism make this region an authentic setting for exploring the relationship between the economy, environment, and local culture.

**Secondary schools:** can participate in educational experiences on coastal life, the marine environment, and local blue economy practices.

**Universities:** they can develop studies on climate change, rural innovation, and coastal development in collaboration with regional bodies.

**Cultural institutions:** they can launch projects on maritime heritage, local memories, and the regeneration of coastal towns.



# BETWEEN ARCTIC EXPLORATION, INDIGENOUS CULTURES, AND SUSTAINABLE INNOVATION

## AN INTERDISCIPLINARY JOURNEY TO NORWAY

In Norway, every landscape tells a story: retreating glaciers, fjords sculpting the coastline, indigenous communities passing down knowledge, and cities experimenting with new ways of living. This itinerary crosses the country from south to north, all the way to the Svalbard Islands, offering an immersive experience in extreme landscapes, local knowledge, and alternative development models. In these places, secondary schools find the opportunity to engage with present-day ecology, historical memory, and resilience practices. Universities can deepen research on the Arctic environment, Sami cultures, and sustainable urban planning. Finally, cultural institutions gain access to collaborative spaces with museums, scientific archives, and communities involved in transition projects. A journey that intertwines knowledge and experience, between past and future.

### DAY 1 – STAVANGER (SØRLANDET): GREEN TRANSITION AND URBAN REGENERATION

In southern Norway, **Stavanger** illustrates one of the country's most emblematic transitions: from oil capital to sustainability hub. The centerpiece of activities will be the **Norwegian Oil Museum**, flanked by regenerated urban spaces like **Øvre Holmegate** and the **University of Stavanger's** educational programs.

**Secondary schools:** explore energy transformation through thematic visits and participatory workshops.

**Universities:** they study the dynamics of the post-oil transition between industrial innovation and environmental policies.

**Cultural institutions:** they design urban narrative paths linked to productive memory and ecological design.

### DAY 2 – BERGEN (VESTLANDET): FJORDS, CREATIVITY, AND RESILIENT COMMUNITIES

Overlooking the Westfjords, **Bergen** is a crossroads of cultures, wooden architecture, and landscape-related artistic practices. The hub of activities will be the **KODE** cultural center, in conjunction with the **Fjord Innovation Lab** and the **Western Norway University of Applied Sciences**.

**Secondary schools:** they work on forms of landscape storytelling and territorial creativity.

**Universities:** they explore topics related to sustainable tourism, environmental change, and site-specific art.

**Cultural institutions:** collaborate with local artists and curators to build experiences that connect heritage, community, and experimentation.

### DAY 3 – TRONDHEIM (TRØNDELAG): BETWEEN VIKING ARCHAEOLOGY AND URBAN INNOVATION

A historic and academic city, **Trondheim** combines a medieval past with visions of the future. The centerpiece of activities will be the **Nidaros Cathedral** complex, along with the **History Museum** and the research facilities of **NTNU – Norwegian University of Science and Technology**.

**Secondary schools:** participate in workshops on public archaeology and digital historical narrative.

**Universities:** they study sustainable urban development models, heritage digitization, and green mobility.

**Cultural institutions:** they activate curatorial practices in dialogue with local archives and new exhibition languages.



### DAY 4 – TROMSØ (NORTH-NORWAY): SAMI CULTURE AND ARCTIC SUSTAINABILITY

In the heart of the Arctic North, **Tromsø** is a center of scientific research and indigenous culture. The center of activities will be the **Center for Sami Culture**, in collaboration with the **Arctic University of Norway (UiT)** and the **Tromsø Museum**.

**Secondary schools:** discover Sami culture through experiential workshops on crafts, language, and oral tradition.

**Universities:** they delve into climate justice, Arctic ethnobotany, and indigenous rights.

**Cultural institutions:** co-design artistic and documentary activities in dialogue with the Sami community.

### DAY 5 – LONGYEARBYEN (SVALBARD): BETWEEN POLAR RESEARCH AND ARCTIC IDENTITY

In the extreme landscape of the Svalbard archipelago, **Longyearbyen** is home to one of the world's most active scientific communities. The hub of its activities will be the **University of Svalbard (UNIS)**, networked with the **Svalbard Museum** and field laboratories.

**Secondary schools:** participate in hands-on experiences on climate, adaptation, and Arctic biodiversity.

**Universities:** they conduct research on permafrost, animal migration, and the impacts of climate change.

**Cultural institutions:** work with scientific archives and museums to create visual narratives and installations about the fragile Arctic balance.

### DAY 6 – NY-ÅLESUND (SVALBARD): INTERNATIONAL SCIENTIFIC COMMUNITY

The final stop is **Ny-Ålesund**, one of the planet's northernmost settlements, where science and cooperation coexist in a surreal landscape. The hub of activities will be the international research base, **Kings Bay Research Station**, accessible with special permits and managed by European scientific institutions.

**Secondary schools:** experience an introduction to multidisciplinary research in extreme environments.

**Universities:** they analyze international scientific governance, research ethics, and environmental diplomacy.

**Cultural institutions:** they document the history of the base and develop cultural projects combining science and storytelling.



## NORTHERN SWEDEN

### NORRLAND

A land of forests, ice, and silence, Norrland occupies a third of Sweden's territory but is home to one of Europe's lowest population densities. Here, nature reigns supreme, but Sami communities, historic mines, and Arctic villages tell the story of an ancient and resilient coexistence. An ideal place for educational experiences related to the extreme environment, indigenous cultures, and landscape transformation.

**Secondary schools:** will explore Arctic life and Sami cultures through immersive activities, visits to local culture centers, and environmental field workshops.

**Universities:** they will conduct studies on climate change, extractivism, and minority languages in collaboration with local research centers.

**Cultural institutions:** they will engage with ethnographic archives and Sami communities to co-design initiatives related to memory, cultural rights, and local sustainability.



## CENTRAL SWEDEN

### SVEALAND

Svealand is the historic region of Swedish power: here are Stockholm, Uppsala, and other cities rich in cultural heritage, urban innovation, and research. Between lakes, capitals, and UNESCO sites, the region intertwines nature, history, and modernity, offering an extraordinary variety of educational opportunities.

**Secondary schools:** will participate in workshops in Stockholm's museums, human rights education programs, and activities on urban sustainability.

**Universities:** they will launch interdisciplinary projects at universities such as Uppsala and Södertörn, focusing on urban governance, the environment, and the digital society.

**Cultural institutions:** will collaborate with museums and research institutes to develop projects related to historical narration, accessible heritage, and active citizenship.



## SOUTHERN SWEDEN

### GÖTALAND

Götaland is a fertile and dynamic region, where international ports, creative countryside, and cities like Gothenburg and Malmö express an open and multicultural identity. From the Baltic coast to regenerated post-industrial spaces, this part of Sweden is a laboratory of coexistence, design, and sustainable development.

**Secondary schools:** will be involved in projects on global citizenship, environmental justice, and local artistic production through urban education centers.

**Universities:** they will conduct research on migration, social innovation, and transitional areas at the universities of Gothenburg, Malmö, and Lund.

**Cultural institutions:** will work with contemporary art spaces, civic archives, and multicultural centers to design projects for cultural participation and urban regeneration.



# BETWEEN CONSCIOUS MODERNITY, COLLECTIVE MEMORIES AND EDUCATIONAL LANDSCAPES

## AN INTERDISCIPLINARY JOURNEY TO SWEDEN

Sweden is a nation that blends social innovation and respect for its roots, ecological balance and cultural openness. From the boreal forests of Norrland to the open coasts of Götaland, each region expresses a vision of the future based on inclusion, research, and participation. This itinerary offers a journey through the country, exploring symbolic and lesser-known locations where reflections on Nordic identities, ecological transition, and social justice can be found. Secondary schools find educational experiences here that intertwine historical memory, sustainability, and creativity. Universities encounter advanced research centers on welfare, the environment, and human rights. Cultural institutions establish partnerships with museums, civic centers, and educational communities. A journey that takes us into the reflective heart of Scandinavia, between dialogue, responsibility, and action.

### DAY 1 – KIRUNA (NORRLAND): A CITY IN MOTION AND INDIGENOUS IDENTITY

In the heart of Sweden's far north, **Kiruna** is a city undergoing physical relocation due to the mines beneath it. The focus of activities will be the **Sametinget (Sami Parliament)** education center and the urban redevelopment project study at **Luleå University of Technology – Kiruna Campus**.

**Secondary schools:** explore issues of urban sustainability and indigenous peoples' rights.

**Universities:** they analyze territorial transformations, land governance, and Sami culture.

**Cultural institutions:** they develop documentary projects involving ethnography, urban planning, and participatory storytelling.

### DAY 2 – UMEÅ (NORRLAND): PUBLIC ART AND ECOLOGICAL CITIZENSHIP

A university city and European Capital of Culture 2014, **Umeå** is a hub of civic innovation and environmental creativity. The hub of activities will be the **Bildmuseet** – a museum of contemporary art linked to **Umeå University**, in dialogue with urban and community art projects.

**Secondary schools:** participate in art workshops on environmental issues and climate justice.

**University:** they study the connections between art, ecology, and visual culture.

**Cultural institutions:** co-design itineraries with local artists and curators on participatory public art practices.

### DAY 3 – FALUN (SVEALAND): INDUSTRIAL ARCHAEOLOGY AND MINING LANDSCAPE

In the heart of central Sweden, **Falun** is a UNESCO World Heritage Site for its copper mine and its relics of industrial civilization. The hub of activities will be the **Falu Gruva Visitor Centre** and the historical archives related to the **Bergslagen**.

**Secondary schools:** exploring the connections between work, memory, and landscape.

**Universities:** they delve into mining culture and the economic transformations linked to natural resources.

**Cultural institutions:** they design historical narratives that intertwine territory, heritage, and working-class identity.



### DAY 4 – ÖREBRO (SVEALAND): IN-BETWEEN CITY AND SOCIAL JUSTICE

**Örebro** is a city renowned for its inclusive policies and civic experimentation. The focus of the activities will be **Örebro University** and the civic **OpenLab**, a space for social and urban innovation.

**Secondary schools:** participate in projects on active citizenship, social cohesion, and local culture.

**Universities:** they study models of municipal welfare and inclusive urban governance.

**Cultural institutions:** collaborate with local authorities on initiatives focusing on the role of culture in intermediate cities.

### DAY 5 – GOTHENBURG (GÖTALAND): PORTS, MIGRATION, AND CIVIC ART

A multicultural port city, **Gothenburg** is a vibrant hub of social and cultural experimentation. The hub of activities will be the **Röda Sten Konsthall**, a contemporary art center located in a former power plant, connected to the **University of Gothenburg**.

**Secondary schools:** explore themes of migration, visual languages, and inclusion through creative projects.

**Universities:** they analyze intercultural dynamics, the decolonization of art, and urban politics.

**Cultural institutions:** they organize intercultural workshops and projects with artists and social workers.

### DAY 6 – LUND (GÖTALAND): KNOWLEDGE, SCIENCE AND CULTURE OF INNOVATION

Located in southern Sweden, **Lund** is one of the country's leading scientific hubs. The hub of activities will be **Lund University**—one of Europe's oldest and most prestigious—in conjunction with the **Max IV Laboratory** and the **Vattenhallen Science Center**.

**Secondary schools:** experience energy, science, and responsible innovation.

**Universities:** they explore the relationship between advanced research, ethics, and society.

**Cultural institutions:** they engage with the scientific community to develop forms of cultural and participatory dissemination.



## NORTHERN FINLAND

### POHJOIS-SUOMI

A wild and arctic region, Northern Finland is an extreme ecosystem where nature, Sámi culture, and environmental innovation coexist. The boreal expanses, Lappish villages, and climate research centers offer unique immersion opportunities. An ideal setting to explore sustainability in its most concrete aspects.

**Secondary schools:** will be able to participate in educational programs related to Sámi culture, boreal ecology, and life in the Arctic territories.

**Universities:** they will launch research on climate change, indigenous policies, and green innovation models in extreme environments.

**Cultural institutions:** will collaborate with Sámi archives, scientific centers, and museums on interdisciplinary projects focusing on memory, environment, and human rights.



## EASTERN FINLAND

### ITÄ-SUOMI

A region of deep lakes, dense forests, and historic frontiers, Eastern Finland preserves a strong cultural and spiritual identity. Orthodox monasteries, border towns, and iconic landscapes make it a fascinating region. A place to explore intercultural dialogue and semi-wild environments.

**Secondary schools:** immerse themselves in nature workshops and historical journeys exploring spirituality, borders, and local identity.

**University:** they will study the intersections of religion, geopolitics, and environmental conservation in transboundary contexts.

**Cultural institutions:** will develop collaborations with monastic foundations, nature parks, and local cultural institutes.



## WESTERN FINLAND

### LÄNSI-SUOMI

Overlooking the Gulf of Bothnia, Western Finland combines ancient coastal settlements, historic ports, and transformed industrial cities. A region steeped in maritime history, post-industrial transition, and minority languages, it's a laboratory for rethinking landscape, culture, and sustainability.

**Secondary schools:** will participate in projects on maritime history, local languages, and sustainable urban architecture.

**Universities:** they will analyze the dynamics of urban regeneration and language policies in the Finnish-Swedish region.

**Cultural institutions:** will co-design cultural initiatives related to coastal heritage, the creative industry, and the memory of places.



## SOUTHERN FINLAND

### ETELÄ-SUOMI

The political, economic, and cultural heart of the nation, Southern Finland is a crossroads of urban innovation, education, and design. Helsinki, Turku, and Tampere offer ideal settings for reflecting on inclusive societies, technology, and Nordic heritage. A dynamic region, open to the world.

**Secondary schools:** will participate in educational programs on sustainable design, urban architecture, and digital citizenship.

**Universities:** they will conduct studies on social innovation, smart cities, and the transformation of educational models.

**Cultural institutions:** they will engage with research centers, museums, and creative incubators to develop collaborative practices on a European scale.



# BETWEEN WISE FORESTS, SOCIAL INNOVATION AND THE LANGUAGES OF SILENCE

## AN INTERDISCIPLINARY JOURNEY TO FINLAND

Finland is a country that transforms essentiality into vision. Between the profound tranquility of the northern lakes and the creative vitality of the southern cities, every place becomes an opportunity for learning, connection, and awareness. This itinerary invites you to explore a nation that has made education, sustainability, and collective well-being its cornerstones. Secondary schools can experiment with advanced pedagogical approaches and reflect on the relationship between nature and culture. Universities find a fertile context for analyzing social policies, digital innovation, and environmental equity. Cultural institutions connect with archives, research centers, and artistic entities immersed in an extraordinary human and geographical landscape. A journey into a model of society that encourages slowness, depth, and a shared future.

### DAY 1 – ROVANIEMI (POHJOIS-SUOMI): ARCTIC CULTURE AND NORDIC SUSTAINABILITY

Located just outside the Arctic Circle, **Rovaniemi** is a vital center for the study of life in extreme regions. The hub of activities will be the **Arctic Centre at the University of Lapland**, an international center of excellence for research on climate change and Arctic cultures.

**Secondary schools:** participate in educational programs on Arctic ecology and biodiversity.

**Universities:** they study the geopolitical, environmental, and cultural dynamics of subpolar regions.

**Cultural institutions:** they launch projects with researchers, artists, and Sami communities on the topic of climate and cultural resilience.

### DAY 2 – KUOPIO (ITÄ-SUOMI): PUBLIC HEALTH AND TERRITORIAL WELL-BEING

In the eastern heart of the country, **Kuopio** is renowned for its quality of life and excellent healthcare. The hub of activities will be the **University of Eastern Finland**, renowned for its programs in environmental health and well-being promotion.

**Secondary schools:** discover the connections between the natural environment, nutrition, and lifestyles.

**University:** they study Nordic models of public health and preventive medicine.

**Cultural institutions:** collaborate with civic centers to design participatory narratives about well-being and community.

### DAY 3 – JYVÄSKYLÄ (EASTERN FINLAND): PEDAGOGY, DESIGN AND EDUCATIONAL LANDSCAPE

Birthplace of the renowned educator Alvar Aalto, **Jyväskylä** is an educational and cultural hub in the heart of Finland. The focal point of activities will be the **University of Jyväskylä** and the **Finnish Education Museum**.

**Secondary schools:** experiment with active educational approaches in innovative school contexts.

**Universities:** they analyze teaching models, school policies, and educational architectures.

**Cultural institutions:** they work on interdisciplinary projects involving design, pedagogy, and urban landscape.



### DAY 4 – TURKU (LÄNSI-SUOMI): BALTIC MEMORY AND INTERCULTURAL DIALOGUE

The former capital of Finland and a cultural hub on the Baltic Sea, **Turku** is today a hub of coexistence and experimentation. The hub of activities will be the **Abo Akademi** and the **Forum Marinum**, a center dedicated to maritime heritage and port history.

**Secondary schools:** explore themes of migration, identity, and historical memory.

**Universities:** they focus on cultural heritage, linguistic justice, and European citizenship.

**Cultural institutions:** collaborate with museums and foundations on intercultural narratives.

### DAY 5 – TAMPERE (LÄNSI-SUOMI): INDUSTRIAL CITY AND SOCIAL INNOVATION

**Tampere** is a city that has reinvented itself: from an industrial hub to a center of social and technological creativity. The focal point of the activities will be the **Vapriikki Museum Centre** and the **University of Tampere**, active in research on democratic and social innovation.

**Secondary schools:** they take part in projects on work, urban transformation, and new rights.

**Universities:** they study urban welfare, civic participation, and inclusive technologies.

**Cultural institutions:** they develop projects with archives and documentation centers on working-class heritage and new citizenships.

### DAY 6 – HELSINKI (ETELÄ-SUOMI): CREATIVE CAPITAL AND CULTURAL HUB

**Helsinki** is a sustainable, dynamic, and forward-looking urban ecosystem. The hub of activities will be **Aalto University** and the **Helsinki Design Museum**, in synergy with cultural hubs such as **Oodi**, the central library, a symbol of civic participation.

**Secondary schools:** explore the role of public architecture and design in building society.

**Universities:** they work on smart cities, cultural policies, and social innovation.

**Cultural institutions:** they connect with European networks for projects on culture as a common good.

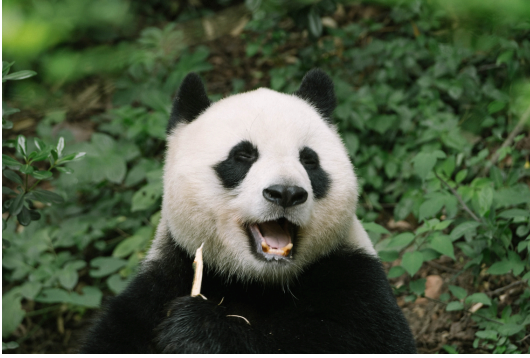


## WOULD YOU LIKE TO REQUEST A QUOTE?

We hope this brochure has been both enjoyable and inspiring for your next cultural-themed journey.

If you'd like to organize a trip with us, simply click the button below — you'll be directed to a form to fill out with all the necessary details. We'll get back to you shortly with a personalized quote tailored to your needs.

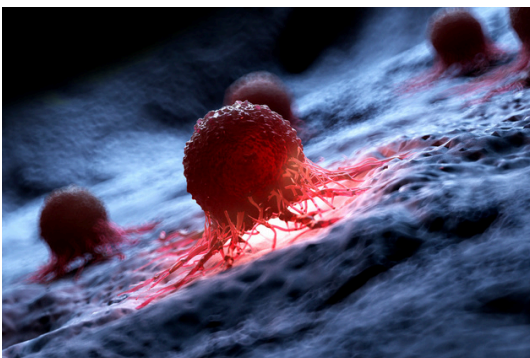
[QUOTE REQUEST](#)



## **OUR SUPPORT FOR SAFEGUARDING THE PLANET AND CANCER RESEARCH**



WITH OUR TRAVELS, WE WANT TO OFFER OUR CUSTOMERS THE OPPORTUNITY TO CONTRIBUTE TO NON-PROFIT ORGANIZATIONS COMMITTED TO SOLVING THE FOLLOWING GLOBAL PROBLEMS



- CONSERVATION OF FLORA - FAUNA
- GLOBAL WARMING
- CANCER RESEARCH



# Atlantic Travel & Tours Ltd

London, New York  
Los Angeles, Miami  
Denver

## **ATLANTIC TRAVEL & TOURS LTD**

**HEADQUARTERED IN THE UNITED STATES AND THE UNITED KINGDOM**

### **REGISTERED COMPANIES**

USA - DENVER - COLORADO - COMPANY REGISTRATION NUMBER: 202 110 96 014

UK - LONDON - COMPANY REGISTRATION NUMBER: 130 288 33

### **E-MAIL**

USA - [unitedstatesadministration@atlantictourstravel.com](mailto:unitedstatesadministration@atlantictourstravel.com)

UK - [unitedkingdomadministration@atlantictourstravel.com](mailto:unitedkingdomadministration@atlantictourstravel.com)

### **WEBSITE**

[www.visitatlantictraveltours.com](http://www.visitatlantictraveltours.com)

### **FULL CONTACT DETAILS**

[www.visitatlantictraveltours.com/contact](http://www.visitatlantictraveltours.com/contact)