

ATLANTIC TRAVEL & TOURS

EDUCATIONAL TRAVELS FOR SCHOOLS,
UNIVERSITIES, CULTURAL INSTITUTIONS

GREENLAND
INSPIRATIONAL BROCHURE



WWW.VISITATLANTICTRAVELTOURS.COM

FROM THE CEO

Dear educators, researchers, and cultural professionals,

Atlantic Travel & Tours is your dedicated partner in organizing **tailor-made journeys** for **secondary schools, universities, and cultural institutions**. This brochure presents a curated selection of **interdisciplinary itineraries** across Greenland, designed to meet the specific needs of each type of organization:

- **Secondary Schools - Dynamic and exploratory educational journeys**
- **Universities - In-depth research and experiential learning opportunities**
- **Cultural Institutions - Cultural exchange and heritage-focused projects**

Each itinerary is crafted to foster active learning and engagement, combining **innovative content with authentic places**.

We understand that every group has different goals and timelines. That's why we offer **full customization of duration, themes, and activities**—ensuring a truly unique and tailored experience.

Our team will support you at every stage, from planning to execution, guaranteeing **flexibility, high-quality service, and strong educational value**.

Choose Atlantic Travel & Tours to turn your journeys into memorable experiences of growth and exchange.



Steve Tabacchi

DR. STEVE TABACCHI
CEO - FOUNDER
ATLANTIC TRAVEL & TOURS

GREENLAND

BETWEEN SHIFTING ICE, ANCESTRAL CULTURES AND THE PLANETARY FUTURE

Greenland, suspended between the forces of nature and global transformations, is much more than a remote territory: it is an educational and cultural frontier for those who wish to understand the challenges of our time. Secondary schools find here a unique context for hands-on learning about the relationship between humanity and the environment, between tradition and adaptation. Universities can initiate research on climate change, Arctic identity, political autonomy, and postcolonial relations. Cultural institutions can collaborate with museums, living archives, and Inuit communities to co-design experiences that intertwine sustainability, memory, and social innovation. Greenland thus offers itself as a space for authentic and transformative learning, where every encounter becomes an opportunity to redefine the connection between knowledge, territory, and global responsibility





NORTH GREENLAND

AVANNAA (NORDGRØNLAND)

Extreme and isolated, North Greenland is one of the most remote regions on the planet. Among eternal ice, Inuit villages, and pristine Arctic landscapes, the boundary between humanity and nature is palpable. It is a space where silence, cold, and memory intertwine in essential yet profoundly resilient life forms.

Secondary schools: can participate in educational programs on extreme climate, human adaptation, and Arctic narratives.

Universities: they can conduct research on climate change, wildlife migrations, and the traditional environmental knowledge of local populations.

Cultural institutions: they can establish collaborations with Inuit communities, polar expedition archives, and artistic projects focused on the deep Arctic.



WEST GREENLAND

KITAA (VESTGRØNLAND)

Overlooking Disko Bay and dotted with vibrant towns like Ilulissat and Sisimiut, West Greenland is the country's cultural and social heart. Universities, research centers, museums, and innovation labs are concentrated here. The coastal landscape, dotted with icebergs and fjords, interacts with a society undergoing transformation.

Secondary schools: can explore the visible effects of global warming on glaciers and coastal communities.

Universities: can develop projects related to cultural geography, environmental management, and the interactions between tradition and modernity.

Cultural institutions: they can work with museums, photographic archives, and art centers to narrate change through local memories and visions.



EAST GREENLAND

TUNU (ØSTGRØNLAND)

Wild, mountainous, and sparsely populated, East Greenland is characterized by dramatic landscapes and a culture deeply rooted in traditional hunting. Local communities preserve languages, practices, and myths that reflect centuries of isolation and interaction with the extreme environment.

Secondary schools: can immerse themselves in environmental education programs and discover daily life in remote areas.

Universities: can investigate transformations in cultural practices and the challenges related to food security and self-sufficiency.

Cultural institutions: can develop participatory projects on oral transmission, linguistic identity, and the relationship between body and landscape.



SOUTH GREENLAND

KUJATAA (SYDGRØNLAND)

Rich in history, South Greenland is home to UNESCO sites that showcase the coexistence of Inuit culture and Norse vestiges. Its green pastures, farming villages, and accessible coastlines make it one of the island's most hospitable regions, ideal for studying sustainable practices and diverse memories.

Secondary schools: can participate in interdisciplinary courses on Arctic agriculture, local traditions, and biodiversity.

Universities: they can conduct comparative studies between Norse and Inuit settlements, on ecological resilience strategies and food systems.

Cultural institutions: can collaborate with local museums and UNESCO projects to enhance agricultural cultural heritage and foster intergenerational dialogue.



BETWEEN CLIMATE CHANGE, ARCTIC CULTURES AND ANCESTRAL KNOWLEDGE

AN INTERDISCIPLINARY JOURNEY TO GREENLAND

Greenland is one of the most fascinating and symbolic regions of the contemporary world: both a frontier of climate change and a custodian of ancient cultures. Secondary schools can enjoy immersive experiences here on the relationship between humanity and the environment, sustainability and resilience. Universities find a privileged setting for interdisciplinary research on Arctic ecology, geopolitics, and Inuit culture. Cultural institutions access research centers and local communities to explore themes related to memory, language, and traditional practices. From Nuuk to the western coasts, passing through remote villages and glacial landscapes, this itinerary offers a journey filled with encounters, discoveries, and reflections. A unique educational opportunity in one of the planet's most fragile and significant ecosystems.

DAY 1 – NUUK: BETWEEN ARCTIC GOVERNANCE AND CONTEMPORARY CULTURE

Greenland's capital and the country's political and cultural center, **Nuuk** is the ideal entry point for understanding the Arctic's contemporary challenges. Activities will take place at the **Greenland National Museum & Archives**.

Secondary schools: will participate in guided tours and workshops on Inuit culture and Greenland's autonomy.

Universities: will analyze the relationships between decolonization, governance, and Arctic self-determination.

Cultural institutions: will collaborate with local curators to explore ways of cultural restitution and dialogue between institutions.

DAY 2 – KATUAQ CULTURAL CENTRE: ARCTIC ART, LANGUAGES, AND IDENTITIES

Katuaq is a hub of contemporary Greenlandic artistic expression. Activities will focus on film, music, and visual culture.

Secondary schools: will host visual expression workshops inspired by the artistic languages of the North.

Universities: they will explore the role of art in the identity affirmation processes of Inuit populations.

Cultural institutions: will participate in meetings with artists and programmers to co-design intercultural exchanges.

DAY 3 – SISIMIUT: BETWEEN ARCHAEOLOGY, MIGRATIONS, AND COLD ENGINEERING

The country's second largest city, **Sisimiut** is a crossroads of ancient history and technical innovation. Activities will take place at the **Sisimiut Museum** and the **Technical Education Center**.

Secondary schools: will explore traditional life through artifacts, reconstructions, and oral histories.

Universities: they will focus on Arctic technologies, sustainable construction, and climate adaptation in extreme environments.

Cultural institutions: will engage with museum operators and educators on documentation and cultural transmission practices.



DAY 4 – ILULISAT: BETWEEN GLACIAL LANDSCAPES AND SCIENTIFIC RESEARCH

Ilulissat is home to one of the world's most active glaciers, a UNESCO World Heritage site, and a natural laboratory for climate change. Activities will take place at the **Ilulissat Icefjord Centre**.

Secondary schools: will participate in educational excursions to the glacier and guided reflections on the climate emergency.

Universities: they will conduct study sessions in collaboration with research centers on glacial dynamics and Arctic biodiversity.

Cultural institutions: will work with local researchers and guides to develop accessible cultural and scientific narratives.

DAY 5 – OQAATSUT: VILLAGE LIFE AND TRADITIONAL KNOWLEDGE

Oqaatsut is a small fishing village where you can experience firsthand Greenlandic daily practices and community values. Activities will be conducted in collaboration with the local school and village families.

Secondary schools: will participate in workshops on sustainable fishing, traditional cuisine, and oral storytelling.

Universities: they will study circular economy models and community resilience in remote settings.

Cultural institutions: will document local practices and engage with the community to build living archives.

DAY 6 – KANGERLUSSUAQ: SCIENCE, ARCTIC WILDLIFE, AND EDUCATIONAL PARTNERSHIPS

A gateway to many trips around the country, **Kangerlussuaq** is also a scientific base and natural habitat for reindeer and musk oxen. Activities will take place at the **Kangerlussuaq Science Field Station's** education center.

Secondary schools: will carry out a citizen science project to monitor Arctic fauna.

Universities: they will participate in research on permafrost and the interaction between environment and technology.

Cultural institutions: will meet with environmental educators to co-design interdisciplinary courses combining science, culture, and the local environment.

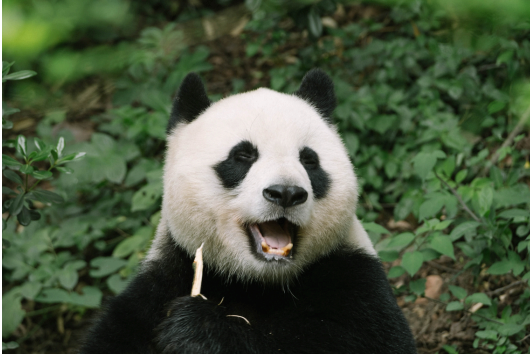


WOULD YOU LIKE TO REQUEST A QUOTE?

We hope this brochure has been both enjoyable and inspiring for your next cultural-themed journey.

If you'd like to organize a trip with us, simply click the button below — you'll be directed to a form to fill out with all the necessary details. We'll get back to you shortly with a personalized quote tailored to your needs.

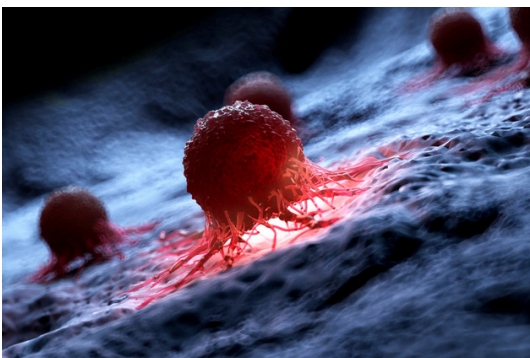
[QUOTE REQUEST](#)



OUR SUPPORT FOR SAFEGUARDING THE PLANET AND CANCER RESEARCH



WITH OUR TRAVELS, WE WANT TO OFFER OUR CUSTOMERS THE OPPORTUNITY TO CONTRIBUTE TO NON-PROFIT ORGANIZATIONS COMMITTED TO SOLVING THE FOLLOWING GLOBAL PROBLEMS



- CONSERVATION OF FLORA - FAUNA
- GLOBAL WARMING
- CANCER RESEARCH



Atlantic Travel & Tours Ltd

London, New York
Los Angeles, Miami
Denver

ATLANTIC TRAVEL & TOURS LTD

HEADQUARTERED IN THE UNITED STATES AND THE UNITED KINGDOM

REGISTERED COMPANIES

USA - DENVER - COLORADO - COMPANY REGISTRATION NUMBER: 202 110 96 014

UK - LONDON - COMPANY REGISTRATION NUMBER: 130 288 33

E-MAIL

USA - unitedstatesadministration@atlantictourstravel.com

UK - unitedkingdomadministration@atlantictourstravel.com

WEBSITE

www.visitatlantictraveltours.com

FULL CONTACT DETAILS

www.visitatlantictraveltours.com/contact