

ATLANTIC TRAVEL & TOURS

EDUCATIONAL TRAVELS FOR SCHOOLS,
UNIVERSITIES, CULTURAL INSTITUTIONS

FRENCH POLYNESIA
INSPIRATIONAL BROCHURE



FROM THE CEO

Dear educators, researchers, and cultural professionals,

Atlantic Travel & Tours is your dedicated partner in organizing **tailor-made journeys** for **secondary schools, universities, and cultural institutions**. This brochure presents a curated selection of **interdisciplinary itineraries** across French Polynesia, designed to meet the specific needs of each type of organization:

- **Secondary Schools - Dynamic and exploratory educational journeys**
- **Universities - In-depth research and experiential learning opportunities**
- **Cultural Institutions - Cultural exchange and heritage-focused projects**

Each itinerary is crafted to foster active learning and engagement, combining **innovative content with authentic places**.

We understand that every group has different goals and timelines. That's why we offer **full customization of duration, themes, and activities**—ensuring a truly unique and tailored experience.

Our team will support you at every stage, from planning to execution, guaranteeing **flexibility, high-quality service, and strong educational value**.

Choose Atlantic Travel & Tours to turn your journeys into memorable experiences of growth and exchange.



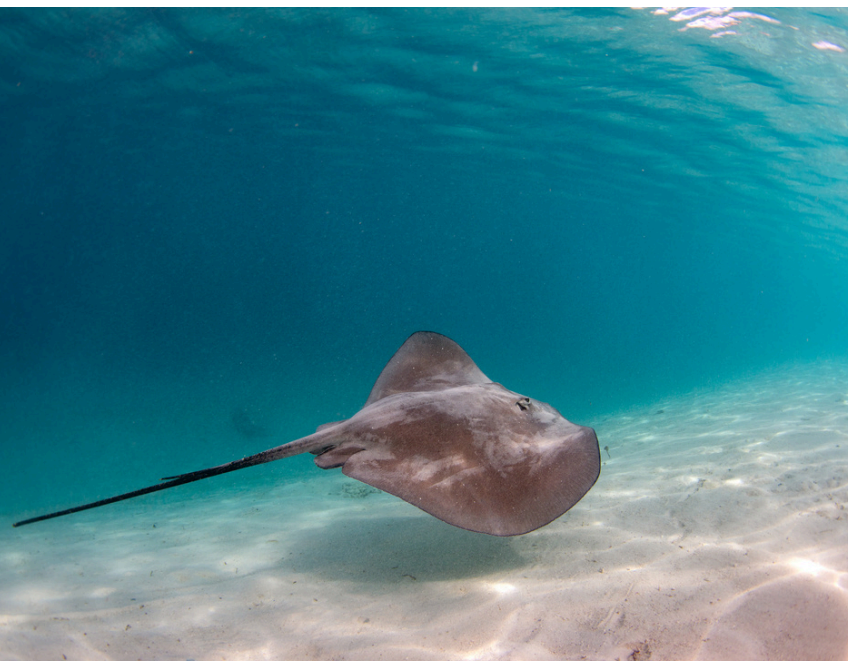
Steve Tabacchi

DR. STEVE TABACCHI
CEO - FOUNDER
ATLANTIC TRAVEL & TOURS

FRENCH POLYNESIA

ARCHIPELAGOS OF THE FUTURE: OCEANITY, INDIGENOUS CULTURES, AND ISLAND RESILIENCE

French Polynesia is a vast and fragmented territory, composed of over a hundred islands scattered across the Pacific Ocean, where oceanic cultures intertwine history, spirituality, and environmental adaptation. At the crossroads of Polynesian tradition and French modernity, it offers educational institutions a unique laboratory to explore active insularity, ecological transitions, and cultural sovereignty. Secondary schools will be able to engage with ancestral knowledge, marine biodiversity, and identity languages, while universities will study archipelagic governance, transpacific mobility, and climate justice. Cultural institutions will find space to co-design living archives, narrative practices, and indigenous pedagogies. In Polynesia, education means navigating between islands, memories, and oceanic futures.





FRENCH POLYNESIA - NORTH

MARQUESAS ARCHIPELAGO

The Marquesas Islands, to the north, are known for their terrestrial and marine biodiversity, as well as a very lively artistic and spiritual culture.

Secondary schools: participate in workshops on biodiversity and traditional art.

Universities: they study marine ecology and cultural anthropology in depth.

Cultural institutions: promote artistic initiatives and the conservation of sacred sites.



FRENCH POLYNESIA - CENTRAL

SOCIETY ARCHIPELAGO

This central archipelago includes the best-known islands, including Tahiti and Bora Bora, a crossroads of traditional cultures and tourism innovation.

Secondary schools: explore the relationship between sustainable development and cultural identity.

Universities: working on models of environmental governance and responsible tourism.

Cultural institutions: they develop projects for linguistic enhancement and multimedia storytelling.



FRENCH POLYNESIA - EAST

TUAMOTU ARCHIPELAGO

The Tuamotus are the largest archipelago of coral atolls, with fragile marine environments and communities dedicated to fishing and pearl farming.

Secondary schools: reflect on marine ecosystems and sustainable fishing practices.

Universities: they study climate change and coastal resource management.

Cultural institutions: collaborate with communities on traditions and knowledge related to the sea.



FRENCH POLYNESIA - SOUTHEASTERN GAMBIER ARCHIPELAGO

Located in the southeast, the Gambier Archipelago is a small group of mountainous islands, rich in religious and missionary history, with wild landscapes and a deeply rooted culture.

Secondary schools: explore the impact of historic missions on indigenous communities.

Universities: they study cultural and environmental dynamics linked to geographical isolation.

Cultural institutions: they work on historical archives and collective memory recovery projects.



FRENCH POLYNESIA - SOUTHERN AUSTRAL ARCHIPELAGO

The Austral Islands represent the southernmost border of French Polynesia, with rugged landscapes and communities steeped in agricultural and maritime traditions. They are ideal places to study climate adaptation and cultural resilience.

Secondary schools: explore sustainable agriculture practices and local biodiversity.

Universities: conduct research on environmental change and the conservation of island ecosystems.

Cultural institutions: they enhance traditional rituals and oral heritage, promoting collaborations with local communities.



LIVING LANDSCAPES: MARINE BIODIVERSITY, ISLAND TRADITIONS, AND CULTURAL SUSTAINABILITY

AN INTERDISCIPLINARY JOURNEY TO FRENCH POLYNESIA

French Polynesia presents itself as an archipelago rich in biodiversity, ancient cultures, and landscapes of extraordinary beauty. This itinerary offers a journey that combines the exploration of the diverse island communities and their marine ecosystems, through traditional practices and environmental innovations. Educational institutions will be able to explore the ecological sustainability and cultural dynamics of a region shaped by the Pacific Ocean. Paul Gauguin's artistic contribution to the Marquesas Islands is particularly noteworthy, where the dialogue between art and local identity offers a unique educational experience. Secondary schools will explore biodiversity and local heritage, while universities will study strategies for adaptation and cultural enhancement. Cultural institutions will be involved in participatory projects for the protection of the landscape and traditions.

DAY 1 – SOCIETY ARCHIPELAGO: NATURE, CULTURE AND CAPITAL

The central archipelago is home to the capital, **Papeete**, and islands such as **Tahiti**, the political and cultural heart of French Polynesia. The focal point of activities will be the **Museum of Tahiti** and the **Islands and the Botanical Garden**.

Secondary schools: exploring biodiversity and cultural heritage.
University: studies on urbanization and sustainable management.
Cultural institutions: promoting local memory and traditions.

DAY 2 – SOCIETY ARCHIPELAGO: MOOREA AND MARINE ACTIVITIES

Moorea offers spectacular scenery and an ideal environment for marine research and sustainability. The **Gump Station Research Center** will be the hub of these activities.

Secondary schools: workshops on marine ecosystems and responsible tourism.
University: studies on conservation and management of resources.
Cultural institutions: environmental education and local culture projects.

DAY 3 – THE MARQUESAS ARCHIPELAGO: ART, MEMORY, AND INSPIRING LANDSCAPES

In the remote **Marquesas Islands**, visit **Atuona**, Paul Gauguin's home and inspiration. Art workshops and museum visits offer insight into the relationship between art and indigenous culture.

Secondary schools: workshops on local art and traditions.
University: studies on cultural impact and island identities.
Cultural institutions: promoting artistic and cultural heritage.



DAY 4 – TUAMOTU ARCHIPELAGO: MARINE BIODIVERSITY AND ATOLL CULTURES

The lagoons and coral reefs of the **Tuamotu** are the heart of Polynesian marine ecology. The **Rangiroa Research Center** coordinates scientific and educational activities.

Secondary schools: workshops on biodiversity and marine conservation.
University: research on climate adaptation and sustainability.
Cultural institutions: projects on coastal traditions.

DAY 5 – GAMBIER ARCHIPELAGO: CULTURAL LANDSCAPES AND SPIRITUALITY

The **Gambier Islands**, with their religious history and traditional architecture, offer an environment rich in spirituality and memory. The focal point will be the **Saint-Michel Cathedral** and the archaeological sites.

Secondary schools: explore cultural heritage and local history.
University: studies on cultural heritage and management.
Cultural institutions: participatory historical enhancement projects.

DAY 6 – SOUTHERN ARCHIPELAGO: WILDERNESS AND ISLAND COMMUNITIES

In the **Austral Islands**, the experience focuses on ecotourism and the resilience of local communities. On **Rapa**, a mountainous and remote island, activities will revolve around the community center and sustainable resource management practices.

Secondary schools: reflections on the environment, self-sufficiency, and local culture.
University: research on sustainable development, geographical isolation, and island identity.
Cultural institutions: initiatives to document and narrate the landscape and oral traditions.

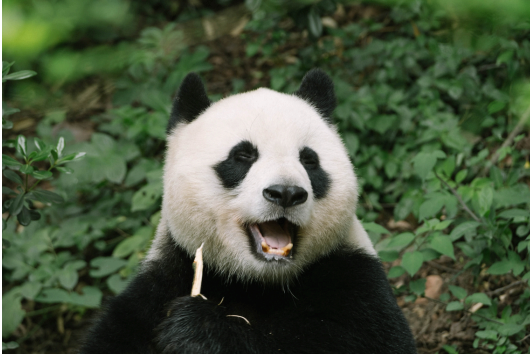


WOULD YOU LIKE TO REQUEST A QUOTE?

We hope this brochure has been both enjoyable and inspiring for your next cultural-themed journey.

If you'd like to organize a trip with us, simply click the button below — you'll be directed to a form to fill out with all the necessary details. We'll get back to you shortly with a personalized quote tailored to your needs.

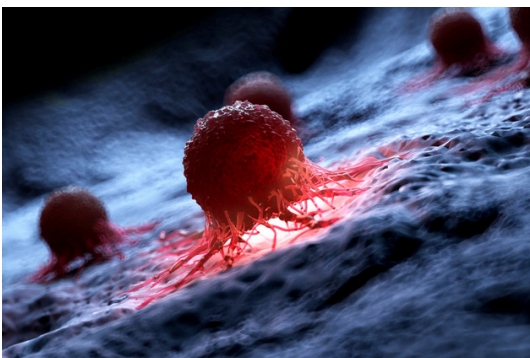
[QUOTE REQUEST](#)



OUR SUPPORT FOR SAFEGUARDING THE PLANET AND CANCER RESEARCH



WITH OUR TRAVELS, WE WANT TO OFFER OUR CUSTOMERS THE OPPORTUNITY TO CONTRIBUTE TO NON-PROFIT ORGANIZATIONS COMMITTED TO SOLVING THE FOLLOWING GLOBAL PROBLEMS



- CONSERVATION OF FLORA - FAUNA
- GLOBAL WARMING
- CANCER RESEARCH



Atlantic Travel & Tours Ltd

London, New York
Los Angeles, Miami
Denver

ATLANTIC TRAVEL & TOURS LTD

HEADQUARTERED IN THE UNITED STATES AND THE UNITED KINGDOM

REGISTERED COMPANIES

USA - DENVER - COLORADO - COMPANY REGISTRATION NUMBER: 202 110 96 014

UK - LONDON - COMPANY REGISTRATION NUMBER: 130 288 33

E-MAIL

USA - unitedstatesadministration@atlantictourstravel.com

UK - unitedkingdomadministration@atlantictourstravel.com

WEBSITE

www.visitatlantictraveltours.com

FULL CONTACT DETAILS

www.visitatlantictraveltours.com/contact