

ATLANTIC TRAVEL & TOURS

EDUCATIONAL TRAVELS FOR SCHOOLS,
UNIVERSITIES, CULTURAL INSTITUTIONS

ICELAND
INSPIRATIONAL BROCHURE



WWW.VISITATLANTICTRAVELTOURS.COM

FROM THE CEO

Dear educators, researchers, and cultural professionals,

Atlantic Travel & Tours is your dedicated partner in organizing **tailor-made journeys** for **secondary schools, universities, and cultural institutions**. This brochure presents a curated selection of **interdisciplinary itineraries** across Iceland, designed to meet the specific needs of each type of organization:

- **Secondary Schools - Dynamic and exploratory educational journeys**
- **Universities - In-depth research and experiential learning opportunities**
- **Cultural Institutions - Cultural exchange and heritage-focused projects**

Each itinerary is crafted to foster active learning and engagement, combining **innovative content with authentic places**.

We understand that every group has different goals and timelines. That's why we offer **full customization of duration, themes, and activities**—ensuring a truly unique and tailored experience.

Our team will support you at every stage, from planning to execution, guaranteeing **flexibility, high-quality service, and strong educational value**.

Choose Atlantic Travel & Tours to turn your journeys into memorable experiences of growth and exchange.



Steve Tabacchi

DR. STEVE TABACCHI
CEO - FOUNDER
ATLANTIC TRAVEL & TOURS

ICELAND

BETWEEN FIRE, ICE AND SUSTAINABLE VISIONS

Iceland is an open-air laboratory where the Earth's primordial forces meet the most pressing challenges of contemporary life. With active volcanoes, geysers, glaciers, and geologically unique landscapes, this Nordic country offers extraordinary and interdisciplinary educational experiences. Secondary schools can explore extreme environments, models of ecological citizenship, and visual languages inspired by the landscape. Universities find Iceland an excellent setting for research on geology, sustainability, renewable energy, Icelandic culture, and climate change. Cultural institutions can engage with museums, research centers, and rural communities for projects on environmental resilience and territorial storytelling. Iceland thus emerges as a unique educational platform, where science, art, and memory intertwine to imagine the future





NORTHERN ICELAND

NORÐURLAND

Volcanic expanses, tranquil fjords, and coastal villages make North Iceland a landscape of rugged beauty and resilient culture. Here, natural forces coexist with creative communities that value tradition and sustainability. The region, dotted with small cultural centers, is ideal for exploring forms of resilience and local innovation.

Secondary schools: they can enjoy educational experiences exploring geothermal energy, Arctic biodiversity, and ancient Nordic narratives.

Universities: they find fertile ground for research on sustainable rural development, community cooperation, and climate observation.

Cultural institutions: they can launch projects with local museums and art centers to explore the relationship between landscape, memory, and creativity.



EASTERN ICELAND

AUSTURLAND

Steep cliffs, remote glaciers, and small port communities define East Iceland, a land of isolation and experimentation. Austurland maintains a deep connection to the environment and to artistic practices born from geographical marginality. It is an undiscovered region that offers authenticity and alternative avenues for exploration.

Secondary schools: can learn more about life in remote areas, the ecological balance, and the sustainable practices of small communities.

Universities: they can develop studies on demographic dynamics, creativity in peripheral contexts, and adaptation to climate change.

Cultural institutions: can collaborate with independent spaces and creative centers on topics such as isolation, ecology, and local languages.



WESTERN ICELAND

VESTURLAND

Dominated by volcanoes, hot springs, and rugged coastlines, West Iceland is a fusion of geological power and ancient history. From historic farms to national parks, Westurland is a land of passages, connections, and Nordic spirituality. Direct contact with natural forces fosters interdisciplinary learning approaches.

Secondary schools: can carry out activities related to active geology, rural cultural heritage, and environmental conservation.

Universities: can launch projects on sustainable tourism, landscape archaeology, and territorial memory.

Cultural institutions: can work with local foundations and open-air museums on narrative paths and environmental cohabitation practices.



SOUTHERN ICELAND

SUÐURLAND

The southern region is one of the most dynamic and accessible in the country: between spectacular waterfalls, retreating glaciers, and creative cities, Suðurland combines extreme nature and cultural experimentation. It is also one of the areas most exposed to environmental change, making it strategic for education and research.

Secondary schools: can participate in workshops on glaciology, ecological citizenship, and landscape photography.

Universities: they can develop research on environmental risk, human-nature coexistence, and energy transition.

Cultural institutions: can collaborate with scientific and artistic centers on interdisciplinary projects involving art, science, and climate.



BETWEEN ACTIVE VOLCANOES, SUSTAINABLE ARCHITECTURE AND TRANSFORMING NORDIC CULTURES

AN INTERDISCIPLINARY JOURNEY TO ICELAND

Iceland is a land where geology meets culture, and innovation coexists with the primordial forces of nature. On this itinerary, schools, universities, and cultural institutions explore a unique territory: separating continental plates, accessible magma chambers, renewable energy, and vibrant rural heritage. Reykjavik opens the journey with its cultural centers and sustainable urban models, before continuing on to volcanoes, geothermal parks, and resilient communities. Each stop is designed to foster participatory experiences, interdisciplinary research, and global reflection. Iceland thus proves to be an exceptional ecological, cultural, and educational laboratory.

DAY 1 – REYKJAVIK: NORDIC CULTURE AND SUSTAINABLE INNOVATION

Reykjavik is a human-scale capital city, active in the fields of green architecture and energy transition. The centerpiece of the activities will be the **Nordic House**, a cultural space designed by Alvar Aalto that combines art, sustainability, and Nordic citizenship.

Secondary schools: participate in workshops on sustainable design and contemporary visual languages.

Universities: they analyze Nordic urban models, cultural policies, and environmental governance.

Cultural institutions: they collaborate with curators and operators to design itineraries between culture, landscape, and community.

DAY 2 – ÞINGVELLIR: WHERE EUROPE AND AMERICA SEPARATE

In **Þingvellir National Park**, you can walk between the European and North American tectonic plates, in a symbolic geological and historical setting. The visitor center will be the focal point for activities.

Secondary schools: explore the landscape with narrative maps and geopolitical storytelling.

Universities: they delve into the relationships between Icelandic geology, identity, and cultural heritage.

Cultural institutions: they design thematic itineraries exploring nature, memory, and invisible borders.

DAY 3 – ÞRÍHNÚKAGÍGUR: INSIDE THE HEART OF A VOLCANO

A unique experience: descending into the dormant magma chamber of the **Þrínúkagígur** volcano. A chance to observe the planet's internal structure up close.

Secondary schools: participate in a journey between science and imagination, between lava and storytelling.

Universities: they conduct studies on geology, natural hazards, and science communication.

Cultural institutions: they dialogue with guides and scientists to create immersive narratives linked to the underground.



DAY 4 – HVERAGERÐI: WELLNESS AND GEOTHERMAL AGRICULTURE

Hveragerði is a rural town known for its naturally heated greenhouses and geothermal park. The hub of activities will be the **Geothermal Park** and the municipal education center.

Secondary schools: participate in activities on the energy cycle and sustainable nutrition.

Universities: exploring resilient agriculture models in volcanic environments.

Cultural institutions: they design experiences that combine environmental health, food, and material culture.

DAY 5 – SKÓGAR: RURAL TRADITIONS AND ENVIRONMENTAL MEMORY

The village of **Skógar** is home to an ethnographic museum surrounded by nature and the famous Skógafoss waterfall. The museum will be the base for the activities.

Secondary schools: experience a day of learning among objects, stories, and landscapes.

Universities: they study socioeconomic changes in Iceland's rural areas.

Cultural institutions: collaborate with local curators to develop living archives and narratives of the territory.

DAY 6 – REYKJANES GEOPARK: VISIBLE FAULTS AND THE ENVIRONMENTAL FUTURE

In the **Reykjanes Geopark**, you'll see active faults, lava fields, and the symbolic bridge between the continents. The **Visitor Center** will be the focus of the day.

Secondary schools: participate in workshops on the origin of the Earth and human adaptation.

Universities: analyze the intersections between geological landscape, energy, and society.

Cultural institutions: they design environmental interpretation and climate change education programs.

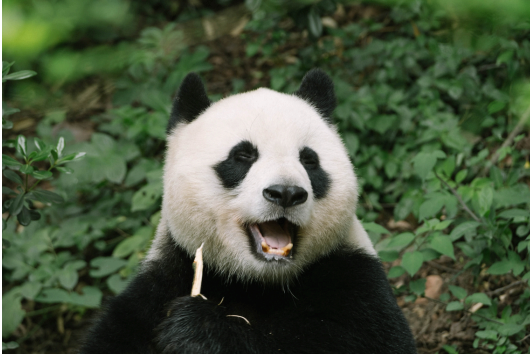


WOULD YOU LIKE TO REQUEST A QUOTE?

We hope this brochure has been both enjoyable and inspiring for your next cultural-themed journey.

If you'd like to organize a trip with us, simply click the button below — you'll be directed to a form to fill out with all the necessary details. We'll get back to you shortly with a personalized quote tailored to your needs.

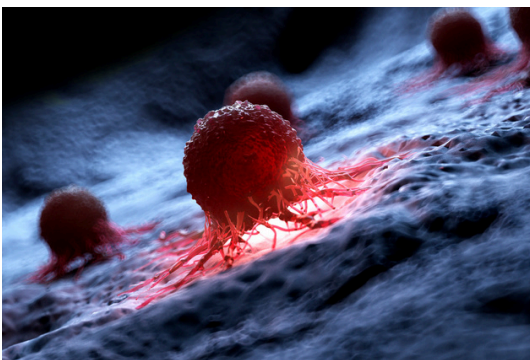
[QUOTE REQUEST](#)



OUR SUPPORT FOR SAFEGUARDING THE PLANET AND CANCER RESEARCH



WITH OUR TRAVELS, WE WANT TO OFFER OUR CUSTOMERS THE OPPORTUNITY TO CONTRIBUTE TO NON-PROFIT ORGANIZATIONS COMMITTED TO SOLVING THE FOLLOWING GLOBAL PROBLEMS



- CONSERVATION OF FLORA - FAUNA
- GLOBAL WARMING
- CANCER RESEARCH



Atlantic Travel & Tours Ltd

London, New York
Los Angeles, Miami
Denver

ATLANTIC TRAVEL & TOURS LTD

HEADQUARTERED IN THE UNITED STATES AND THE UNITED KINGDOM

REGISTERED COMPANIES

USA - DENVER - COLORADO - COMPANY REGISTRATION NUMBER: 202 110 96 014

UK - LONDON - COMPANY REGISTRATION NUMBER: 130 288 33

E-MAIL

USA - unitedstatesadministration@atlantictourstravel.com

UK - unitedkingdomadministration@atlantictourstravel.com

WEBSITE

www.visitatlantictraveltours.com

FULL CONTACT DETAILS

www.visitatlantictraveltours.com/contact