

ATLANTIC TRAVEL & TOURS

ENGLISH LANGUAGE COURSES

AUSTRALIA

**EXPERIENCE ENGLISH IN AUSTRALIA: STUDY,
CULTURE, AND IMMERSION ACROSS COSMOPOLITAN
CITIES, SPECTACULAR NATURAL LANDSCAPES, AND A
DYNAMIC, INTERNATIONALLY ORIENTED LIFESTYLE**



WWW.VISITATLANTICTRAVELTOURS.COM

FROM THE CEO - FOUNDER

Dear students,

Studying English in Australia represents one of the most complete and transformative experiences in the international field of studying abroad.

Australia combines a high quality of life, a safe and modern environment, and a natural setting that is unique in the world.

Our tour operator offers tailor-made language programmes for students of all ages: children, teenagers, university students, professionals, and adults.

Each pathway is designed to integrate English language learning, cultural experience, and personal growth.

Australian English, increasingly relevant in the global context, is acquired in a dynamic, practical environment strongly focused on real-life communication.



Steve Tabacchi

DR. STEVE TABACCHI
CEO - FOUNDER
ATLANTIC TRAVEL & TOURS



WHY STUDY ENGLISH IN AUSTRALIA

DISCOVER AUSTRALIA THROUGH AN EXCLUSIVE ENGLISH LANGUAGE STUDY EXPERIENCE, WHERE MODERN, VIBRANT CITIES BLEND WITH EXTRAORDINARY NATURAL LANDSCAPES, FROM THE OCEAN TO VAST OPEN SPACES, IN AN AUTHENTIC AND INTERNATIONAL LIFESTYLE.

WHY CHOOSE AUSTRALIA TO STUDY ENGLISH



Australia is an ideal destination for those who wish to combine study with an international lifestyle.

The country is characterised by a multicultural environment, modern cities, and a strong connection with nature and outdoor activities.

Australian language schools are highly structured and offer flexible programmes, with strong emphasis on teaching quality and the integration of international students.

In addition, Australia is one of the most popular destinations for study-work programmes, offering concrete opportunities for personal and professional growth.

MAIN DESTINATIONS

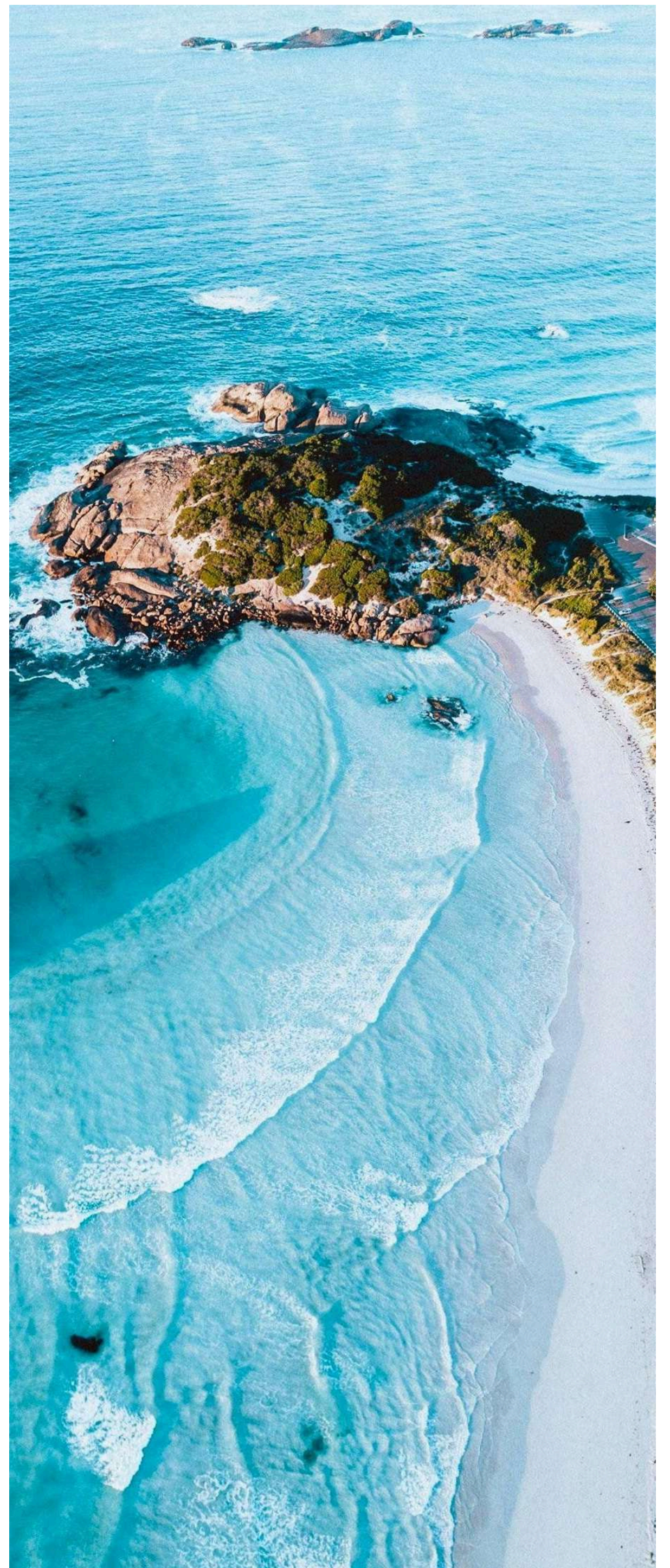
The main destinations for studying English in Australia include Sydney, Melbourne, Brisbane, and Perth.

Sydney is the most iconic city, characterised by a dynamic and international environment. Melbourne is considered the cultural capital of the country, with a strong focus on art, music, and urban life. Brisbane offers a more tropical climate and a relaxed lifestyle. Perth is a quieter destination, yet highly modern and safe.

In addition to the main Australian cities, our network may also include coastal and alternative destinations, selected according to the availability of partner schools.

The Gold Coast and Adelaide are highly sought-after options for those seeking a more authentic and immersive experience, while some seasonal destinations may be available at specific times of the year.

All partner schools are carefully selected and verified to ensure high quality standards, even outside the most traditional study circuits.





GENERAL ENGLISH PROGRAMS

General English programmes in Australia are designed to develop all core language skills: speaking, listening, reading, and writing.

Courses are available for all levels, from beginner to advanced, with international groups and small class sizes.

The teaching approach is communicative and practical, with a strong emphasis on the real-life use of language in both everyday and professional contexts.

SPECIALIST PROGRAMMES AND WORK & STUDY

Australia is one of the most important destinations for Work & Study programmes.

Business English courses, English for Hospitality, and preparation courses for international exams such as IELTS are available.

Many programmes allow students to combine language study and part-time work, offering a complete educational experience.



PROGRAMS FOR YOUTH AND SUMMER CAMPS



Programs for children and teenagers in Australia offer a unique experience of study and international living.

Summer camps combine English lessons with sports activities, excursions, and social interaction.

Students are accommodated in safe residences or campuses and supervised by qualified staff.

ACCOMMODATIONS

Accommodation options include Australian host families, student residences, and shared apartments.

Homestays allow for full immersion in the local culture and everyday language.

Residences offer independence and a stimulating international environment.





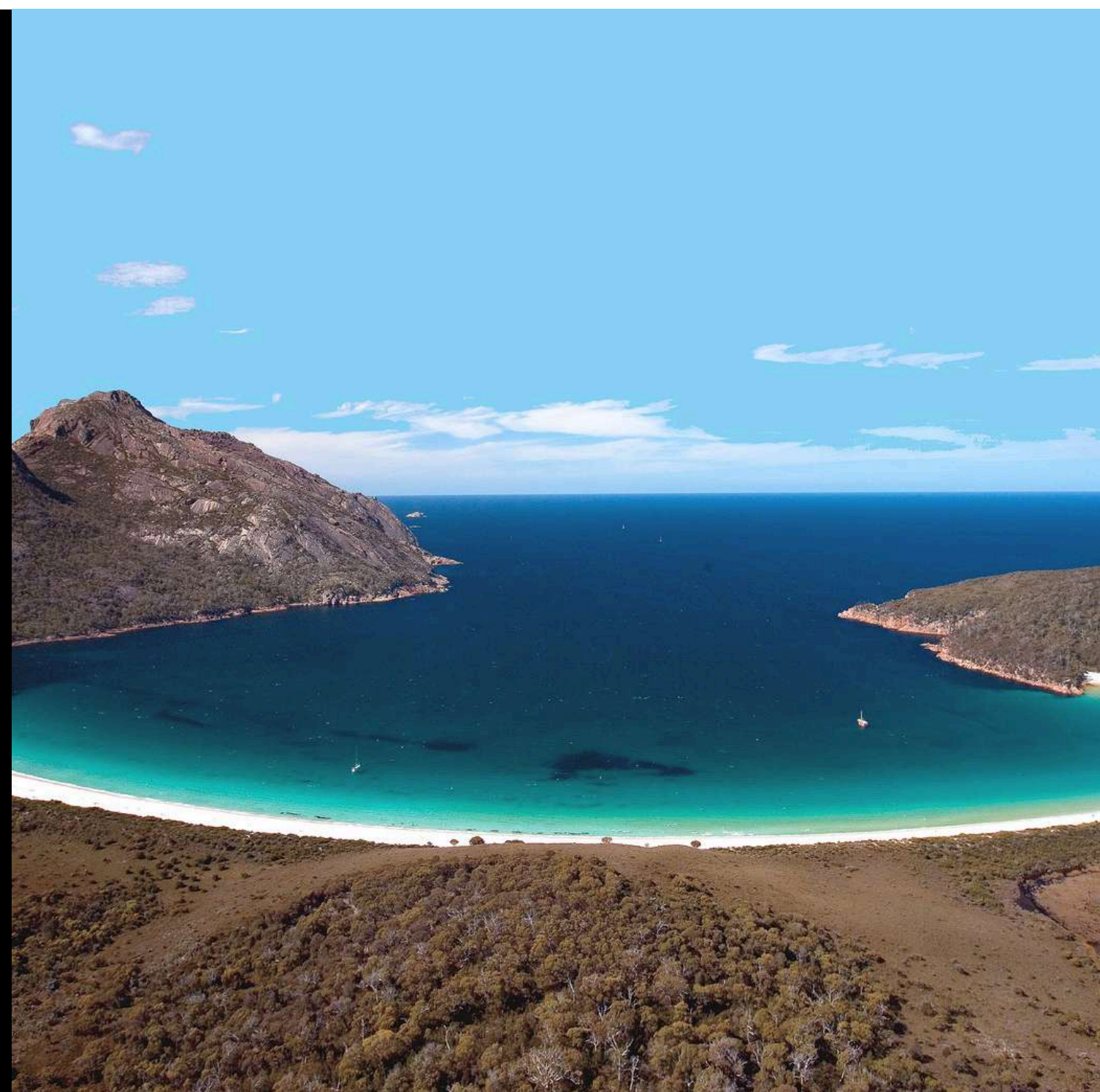
CULTURAL EXPERIENCE AND NATURE

Australia offers a unique combination of modern cities and spectacular nature.

Students can enjoy extraordinary experiences such as the Great Barrier Reef, the beaches of the Gold Coast, national parks, and the urban life of major cities.

Outdoor activities such as surfing, hiking, and sports are an integral part of the study experience.

TAILOR-MADE TRAVEL AND INFORMAL LANGUAGE IMMERSION



In addition to English language courses, our tour operator offers the opportunity to combine the study programme with tailor-made travel experiences in Australia.

This formula transforms a language stay into a complete experience that combines education and the discovery of the destination.

English is practised in real and informal contexts such as beaches, local events, excursions, dining, and social activities.

Programmes can be customised before, during, or after the course, with itineraries across Sydney, Melbourne, the Gold Coast, and the country's most iconic natural areas.

It is possible to request solutions with a tour leader, guide, or a completely independent formula, depending on the level of autonomy and the client's needs.



SERVICES INCLUDED

Our tour operator provides a complete and professional service.

It includes personalised consultation, level testing, school enrolment, accommodation arrangement, documentation support, pre-departure assistance, and on-site support.

Travel insurance, airport transfers, and customised programmes for groups or companies are also available.

Studying in Australia means experiencing a complete, dynamic, and highly educational international journey.

Our goal is to offer pathways that combine quality, freedom, and concrete results.

Your English, your journey, your Australia.



QUALITY AND SERVICE UPDATES

The experiences and services presented in this brochure have been selected based on qualitative criteria focused on comfort, accessibility, and the personalization of the study and travel experience.

As operational conditions, dedicated services, and policies may be subject to updates or changes over time, each proposal will be reviewed and confirmed at the quotation stage, in order to ensure full alignment with the traveler's specific requirements and the expected quality standards.



DISCOVER AUSTRALIA BEYOND THE LANGUAGE COURSE

FROM AUSTRALIA'S MAJOR COASTAL CITIES TO ITS MOST AUTHENTIC INLAND REGIONS, AND FROM TROPICAL TO OCEAN LANDSCAPES, THE COUNTRY OFFERS STUDY AND TRAVEL EXPERIENCES SHAPED BY MULTICULTURALISM, UNTOUCHED NATURE, AND SOME OF THE MOST SPECTACULAR SCENERY IN THE WORLD.

AUSTRALIA – A CONTINENT SHAPED BY ANCIENT ABORIGINAL CULTURES, COLONIAL LAYERS, AND EXTREME LANDSCAPES CONNECTING INLAND DESERTS, OCEAN COASTLINES, AND REMOTE ISLANDS



Located between the Indian Ocean and the Pacific Ocean, Australia is a continental island distinguished by one of the world's most extensive and discontinuous territorial structures. Its geography is defined by a constant balance between extremely arid and desert inland areas, vast and densely populated coastal belts with diverse climates, tropical regions in the north, and remote island systems spread across different oceans. The Outback occupies much of the country's centre and is characterised by deserts, plateaus, and semi-arid environments, while the eastern and south-eastern coasts concentrate the main cities, infrastructure, and cultural systems. The north develops tropical environments and rainforests, while the south and south-east are defined by temperate and insular regions. This strong environmental discontinuity makes Australia a system of semi-autonomous territories, where each area presents profoundly different climatic and landscape characteristics. From a historical and cultural perspective, the Australian territory has been inhabited for over 60,000 years by Aboriginal peoples and Torres Strait Islanders, who developed a deep spiritual relationship with the land through the system of the "Dreaming", a worldview that connects landscapes, stories, and cultural identity. With the arrival of Europeans at the end of the 18th century, Australia entered a phase of British colonisation that led to the establishment of the first coastal cities and the introduction of new political and social structures. Over time, the country evolved into an independent federal and highly multicultural society, strongly influenced by European, Asian, and Oceanic cultures. This stratification has created a complex identity, in which major cities represent global modernity, while inland and remote areas maintain a more direct relationship with nature and Indigenous cultures.

The Australian territory can therefore be organised into macro-regions that group states and territories according to a coherent geographical and functional logic, also including the main islands and external territories:

- **EASTERN AUSTRALIA (NEW SOUTH WALES, VICTORIA, AUSTRALIAN CAPITAL TERRITORY)** – THIS MACRO-REGION CONCENTRATES THE HIGHEST URBAN AND CULTURAL DENSITY IN THE COUNTRY. NEW SOUTH WALES, WITH SYDNEY AS ITS MAIN CENTRE, EXTENDS ACROSS NATURAL BAYS, RUGGED COASTLINES, AND MOUNTAIN RANGES SUCH AS THE BLUE MOUNTAINS. VICTORIA, WITH MELBOURNE, REPRESENTS THE CULTURAL AND ARTISTIC HUB, WHILE THE AUSTRALIAN CAPITAL TERRITORY, WITH CANBERRA, SERVES AS THE INSTITUTIONAL AND POLITICAL CENTRE, DESIGNED AS A PLANNED CITY SET WITHIN A CONTROLLED NATURAL ENVIRONMENT
- **NORTHERN TROPICAL AUSTRALIA (QUEENSLAND, NORTH-EASTERN NORTHERN TERRITORY)** – THIS AREA IS DOMINATED BY TROPICAL AND SUBTROPICAL ENVIRONMENTS. QUEENSLAND, WITH BRISBANE AS ITS MAIN URBAN HUB, EXTENDS TO THE GREAT BARRIER REEF, ONE OF THE WORLD'S MOST COMPLEX MARINE ECOSYSTEMS, AND THE RAINFORESTS OF THE DAINTREE. THE NORTHERN NORTHERN TERRITORY INTRODUCES A MORE REMOTE AND WILD DIMENSION, WITH AREAS SUCH AS KAKADU NATIONAL PARK, WHERE WETLAND ECOSYSTEMS, ABORIGINAL ROCK ART, AND WILDLIFE COEXIST IN BALANCE.
- **CENTRAL AUSTRALIA (INLAND NORTHERN TERRITORY AND WESTERN OUTBACK OF SOUTH AUSTRALIA AND WESTERN AUSTRALIA)** – THIS REGION REPRESENTS THE DESERT HEART OF THE CONTINENT, DOMINATED BY EXTREME AND SYMBOLIC LANDSCAPES SUCH AS ULURU AND KATA TJUTA. IT IS CHARACTERISED BY LONG DISTANCES, EXTREMELY LOW POPULATION DENSITY, AND A STRONG ABORIGINAL CULTURAL PRESENCE. HERE, THE LANDSCAPE BECOMES AN IDENTITY ELEMENT RATHER THAN A SIMPLE GEOGRAPHICAL BACKDROP
- **SOUTHERN AUSTRALIA (SOUTH AUSTRALIA, SOUTH-WESTERN VICTORIA, AND INLAND REGIONS)** – THIS MACRO-REGION IS DEFINED BY A BALANCE BETWEEN CITIES, VINEYARDS, AND SEMI-ARID TERRITORIES. ADELAIDE IS THE MAIN CENTRE, SURROUNDED BY WINE REGIONS SUCH AS THE BAROSSA VALLEY AND CLARE VALLEY, WHILE PERIPHERAL AREAS OPEN TOWARDS LESS URBANISED DESERTS AND COASTLINES SUCH AS THE EYRE PENINSULA
- **WESTERN AUSTRALIA** – THE LARGEST AND MOST ISOLATED OF THE STATES, WITH PERTH AS ITS MAIN URBAN CENTRE. THE TERRITORY EXTENDS FROM THE AGRICULTURAL AND COASTAL SOUTH OF MARGARET RIVER TO THE NORTHERN KIMBERLEY REGION, CHARACTERISED BY CANYONS, SEASONAL RIVERS, AND REMOTE COASTLINES FACING THE INDIAN OCEAN. IT IS ONE OF THE LEAST DENSELY POPULATED AREAS IN THE WORLD RELATIVE TO ITS SIZE
- **TASMANIA (AUTONOMOUS ISLAND STATE)** – SEPARATED FROM THE MAINLAND BY THE BASS STRAIT, TASMANIA IS CHARACTERISED BY TEMPERATE FORESTS, MOUNTAINS, AND DEEPLY INDENTED COASTLINES. HOBART IS THE MAIN URBAN CENTRE, WHILE THE REST OF THE ISLAND IS DOMINATED BY NATURAL PARKS SUCH AS FREYCINET NATIONAL PARK AND CRADLE MOUNTAIN, WHERE NATURE REMAINS HIGHLY PRESERVED
- **EXTERNAL AUSTRALIAN TERRITORIES (NORFOLK ISLAND, CHRISTMAS ISLAND, COCOS (KEELING) ISLANDS, AND OTHER PACIFIC AND INDIAN OCEAN ATOLLS)** – THESE AREAS REPRESENT GEOGRAPHICAL AND ADMINISTRATIVE EXTENSIONS OF AUSTRALIA BUT WITH STRONG ENVIRONMENTAL AND CULTURAL AUTONOMY. NORFOLK ISLAND PRESERVES A COLONIAL HISTORY AND A GREEN OCEANIC LANDSCAPE IN THE SOUTH PACIFIC, WHILE CHRISTMAS ISLAND AND THE COCOS (KEELING) ISLANDS ARE ISOLATED TROPICAL ECOSYSTEMS IN THE INDIAN OCEAN, CHARACTERISED BY UNIQUE BIODIVERSITY AND LOW HUMAN IMPACT

From the perspective of connectivity and international access, Australia's airport system is organised into hubs that serve macro-regions and enable both entry into the continent and distribution across internal and external territories:

- **Sydney Airport** – The main gateway to eastern Australia and a major intercontinental hub connecting Asia, Europe, and the Americas, with direct links to Melbourne, Brisbane, and the rest of the country
- **Melbourne Airport** – The primary hub for the south-east and a strategic connection point for Tasmania, South Australia, and international routes
- **Brisbane Airport** – The main access point to Queensland and the Great Barrier Reef, with connections across the Pacific
- **Perth Airport** – A key hub for Western Australia and a direct link to the Indian Ocean and Southeast Asia
- **Darwin International Airport** – A strategic gateway to the Northern Territory and a connection point to Southeast Asia and the northern Outback
- **Canberra Airport** – Supporting the institutional system and domestic connections
- **Hobart Airport and Launceston Airport** – The main access points to Tasmania, with direct connections to the mainland
- **Regional and charter connections from Brisbane, Sydney, and Perth to external territories (Norfolk Island, Christmas Island, Cocos (Keeling) Islands), characterised by less frequent and highly regulated access**

In summary, Australia functions as a complex and deeply stratified continental system, where geography shapes culture, distance defines relationships between territories, and nature remains the dominant element connecting deserts, coastlines, and islands into a single yet highly articulated identity space.

WHEN TO TRAVEL TO AUSTRALIA



The best period for travelling to Australia depends significantly on the country's climatic diversity across very distant regions. In fact, Australia's vast geographical extension includes multiple climate zones.

Australia: opposite seasonality between North and South and strong regional variability

September – November / March – May

Generally the most balanced periods for most of the country, with mild temperatures in the southern areas (Sydney, Melbourne, Adelaide) and stable conditions also along the coastal regions of Queensland and Western Australia.

December – February

Austral summer: ideal for the southern coastal areas and Tasmania, but it can be very hot and humid in the tropical north (Cairns, Daintree, Darwin), with the possibility of heavy rainfall and cyclones in the northern belt.

June – August

Austral winter: favourable for the tropical north and the Outback (Uluru, Red Centre), but colder and less suitable for the southern regions and Tasmania, where temperatures can drop significantly.

In summary: Australia is a destination that can be visited all year round, but not all areas are suitable in the same period.

THE STUDY AND LANGUAGE IMMERSION EXPERIENCE IN AUSTRALIA

Studying English in Australia means experiencing the language in one of the most dynamic and international contexts in the world, where quality of life, multiculturalism, and direct contact with nature make learning a continuous and immersive experience.

The main language schools and study programmes are located in major cities such as Sydney, an iconic metropolis overlooking the Pacific Ocean and characterised by districts like Bondi and Darling Harbour; Melbourne, the country's cultural capital with a strong artistic and university scene; Brisbane, a subtropical city developed along the Brisbane River; Perth, modern and isolated on the western coast of the Indian Ocean; and Adelaide, elegant and well-organised, surrounded by hills and renowned for its quality of life and cultural festivals. In these settings, English is practised daily in real-life environments, between urban life, culture, and social interaction. In selected coastal and regional areas, complementary programmes may also be available, such as the Gold Coast, famous for its long beaches and youthful atmosphere; the Sunshine Coast, more relaxed and immersed in Queensland's subtropical nature; and Cairns, the gateway to the Great Barrier Reef and a unique tropical environment.

This combination of structured study and Australian lifestyle offers a complete experience, uniting language education with authentic discovery of the country.

A JOURNEY BEYOND THE LANGUAGE COURSE: AUTHENTIC EXPERIENCES AND DESTINATIONS IN AUSTRALIA DESIGNED FOR EVERY CATEGORY OF ENGLISH LANGUAGE STUDENTS

- **Parents of junior students:** Australia offers safe and spectacular experiences. In the surroundings of Sydney, the Blue Mountains, with rock formations such as the Three Sisters and village settings like Leura immersed in the forest, provide natural landscapes easily accessible from the city.
- **Teenagers:** the journey becomes an active exploration along the coast. The Great Ocean Road, with the Twelve Apostles cliffs, wild beaches, and small towns such as Apollo Bay, represents one of the most iconic yet still authentic scenic routes in southern Australia. In Queensland, the Noosa and Sunshine Coast area offers a less crowded alternative to the Gold Coast, with nature reserves, coastal forests, and lagoons where local wildlife can be observed in a more relaxed environment.
- **University students:** Melbourne represents the heart of the urban experience. Districts such as Fitzroy, St Kilda, and Brunswick offer an alternative cultural scene with live music, local markets, and street culture, while festivals and international events animate the city throughout the year.
- **Adults:** the journey can extend into the Outback, with destinations such as Alice Springs and Uluru, where desert landscapes and sacred rock formations of Aboriginal cultures create a unique and deeply symbolic experience.
- **Professionals:** Western Australia offers less explored but extraordinary scenery, from the wild coastline of Margaret River, with vineyards and ocean views, to Ningaloo Reef, where it is possible to swim with whale sharks and experience one of the most pristine marine ecosystems on the planet.





DID YOU KNOW?

In Sydney, the Opera House was designed by Danish architect Jørn Utzon, and its “sail”-like roof is inspired by natural forms rather than traditional architectural structures, making it one of the most recognisable buildings in the world.

Also in Sydney, Bondi Beach is connected to Coogee by a scenic coastal walk of about 6 km, the Bondi to Coogee Walk, which passes cliffs, bays, and natural ocean pools.

In the heart of the Australian desert, Uluru is a sacred rock formation for the Aboriginal Anangu people and changes colour throughout the day depending on sunlight, shifting from deep red to golden orange.

In Queensland, the Great Barrier Reef is the largest coral reef system on the planet and can even be seen from space, stretching for over 2,300 kilometres along the north-eastern coast.

In Melbourne, inner-city laneways such as Hosier Lane have become one of the world’s capitals of street art, with constantly changing murals turning the city into an open-air gallery.

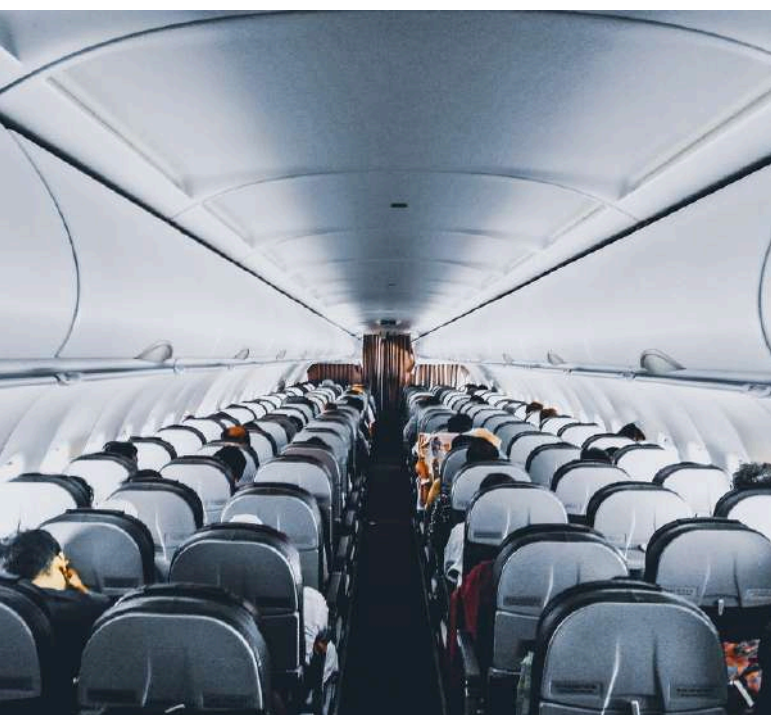
In South Australia, the Barossa Valley is one of the country’s oldest wine regions and is still home to communities of German origin that have influenced local traditions, architecture, and winemaking culture.



**WHY TRAVEL
WITH US**

**DISCOVER WHY OUR
TOUR OPERATOR IS
UNIQUE AND
UNRIVALED!**

BESPOKE TRAVEL FOR EVERYONE



OUR TRAVEL ITINERARIES

We exclusively curate itineraries for innovative and original travel experiences that diverge from the conventional paths of mass tourism. Our aim is for each customer to be the protagonist of their own journey.

OUR TRAVEL CLASSES

We arrange travel for the following categories:

- **FIRST**
- **PREMIUM**
- **ECONOMY**

WE ORGANIZE ITINERARIES USING THE FOLLOWING TRANSPORTS



CAR

- ✓ RENTAL



VAN

- ✓ RENTAL
- ✓ SCHEDULED TOURS WITH DRIVER



COACH

- ✓ RENTAL WITH DRIVER
- ✓ SCHEDULED TOURS WITH DRIVER

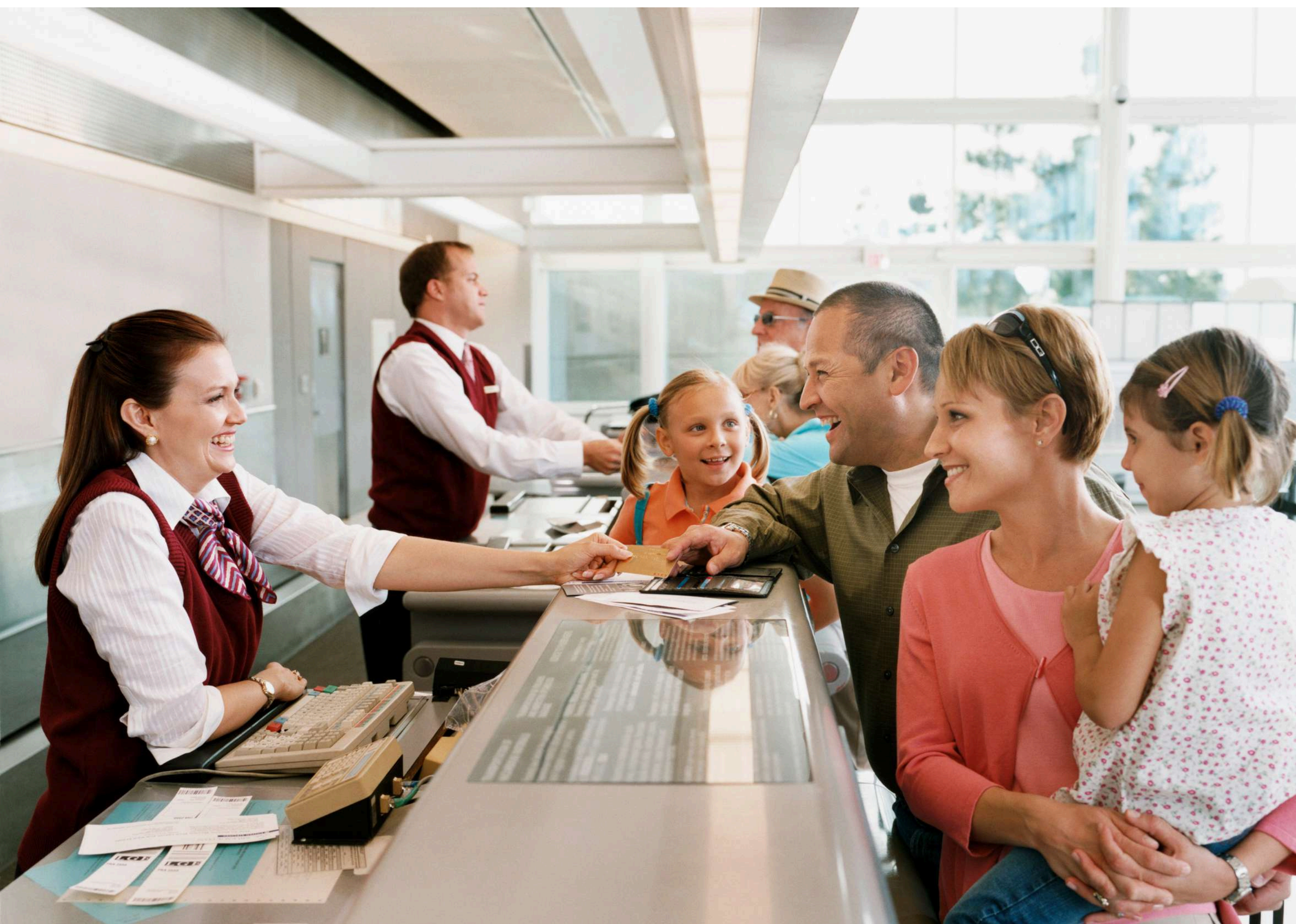


AIRPLANE

- ✓ DOMESTIC FLIGHTS

PRIORITY CHECK-IN AND CHECKED BAGGAGE

Bid farewell to lengthy check-in queues! With our priority check-in service, you can swiftly obtain your boarding pass and check in your baggage. We are consistently prepared to provide this option, contingent upon airline availability, to enhance your travel experience, whether you are flying in premium or economy class. **Do not squander time; opt for comfort!**



NO QUEUES AT THE AIRPORT WITH THE FAST TRACK SERVICE



We understand the frustration of enduring lengthy waits at airport security. Therefore, we consistently incorporate fast track access into our travel packages, allowing you to bypass the queue and enjoy a stress-free experience.

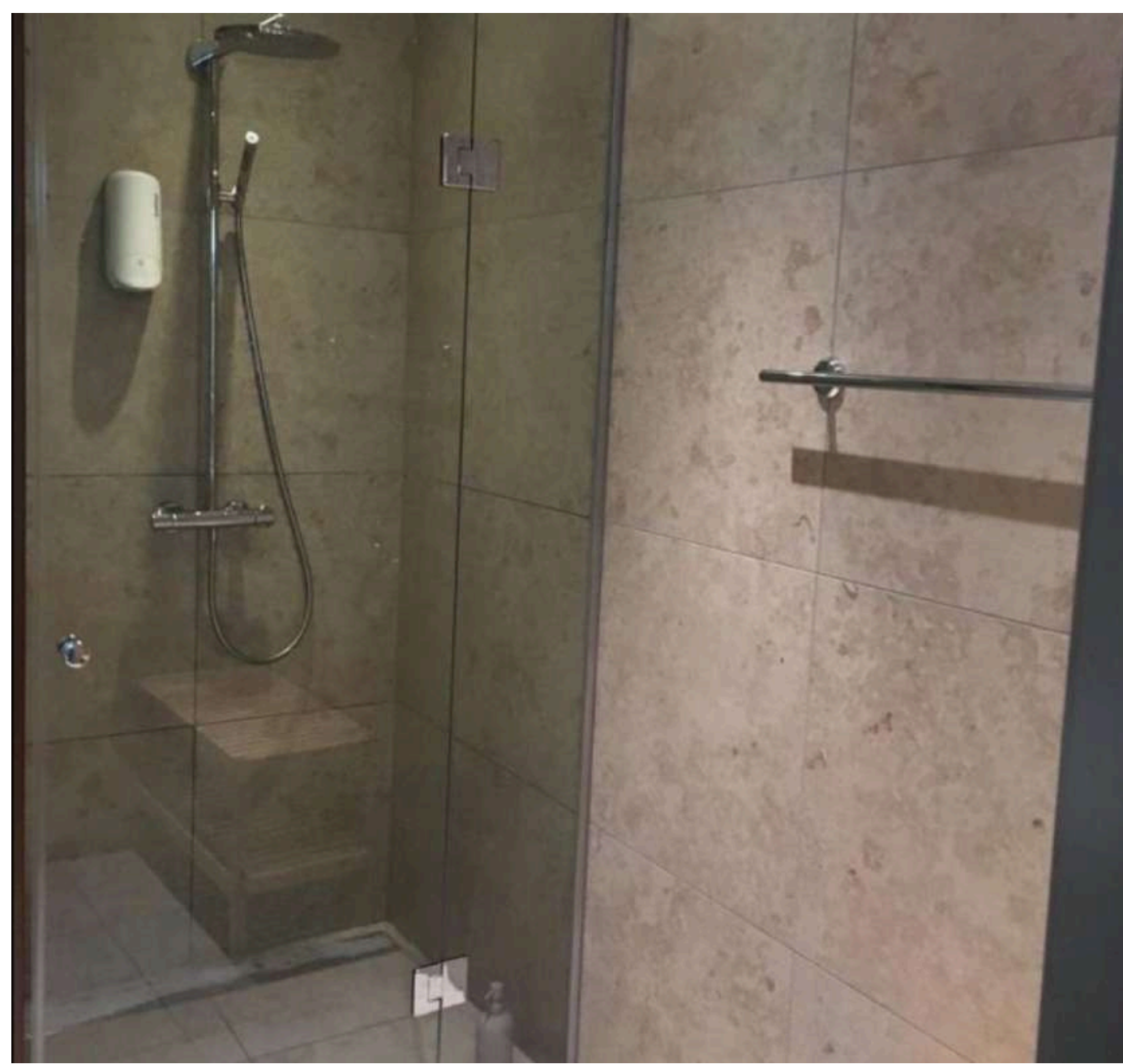
The service is contingent upon the availability at each airport, thus we cannot assure its constant accessibility. Nevertheless, we are pleased to announce that it has been implemented in the majority of the airports we utilize. **Seize this opportunity!**





COMFORT IN AIRPORT LOUNGES

Once reserved solely for business and first-class passengers, airport lounges are now available to travelers in other classes as well. We provide the highest level of comfort and luxury to ensure your airport experience is memorable. In our travel packages, we consistently strive to include access to these exclusive areas at both departure and arrival points (subject to airport and airline availability). Relax, indulge in culinary delights, savor fine beverages, and enjoy refreshing showers, all within elegant and tranquil settings. **Seize this exceptional opportunity!**










OTHERS SERVICES

OUR EXCEPTIONAL PARTNERSHIPS WITH DIVERSE SUPPLIERS ENABLE US TO PROVIDE OUR CUSTOMERS WITH THE FINEST OF THE FOLLOWING SERVICES

ADVANCED LUGGAGE SHIPPING
TOURIST VISAS
CURRENCY EXCHANGE
INSURANCE POLICIES



| | | |
|---|-----|--------|
|  | AUD | 7.01 |
|  | NZD | 5.05 |
|  | JPY | 0.0913 |
|  | GBP | 11.23 |
|  | EUR | 9.71 |
|  | SGD | 5.35 |
|  | CHF | 7.01 |





ONE FREE INDIVIDUAL FOR EVERY 15 PAYING CUSTOMERS

Take advantage of our **perpetually active** promotion. If you can gather a **minimum of 15 individuals**, one person will receive a **complimentary** trip. Consider anyone who might be interested among family, friends, colleagues, or others. Additionally, if you require a tour leader or tour guide to assist you and your group throughout the entire tour, we can provide this service as well

ALWAYS TRAVEL WITH A PREMIUM DISCOUNT!



-20%

- **ACTIVE YEAR-ROUND**
- **FOR ALL CATEGORIES OF TRAVELERS**
- **NO MINIMUM SPENDING THRESHOLD REQUIRED**

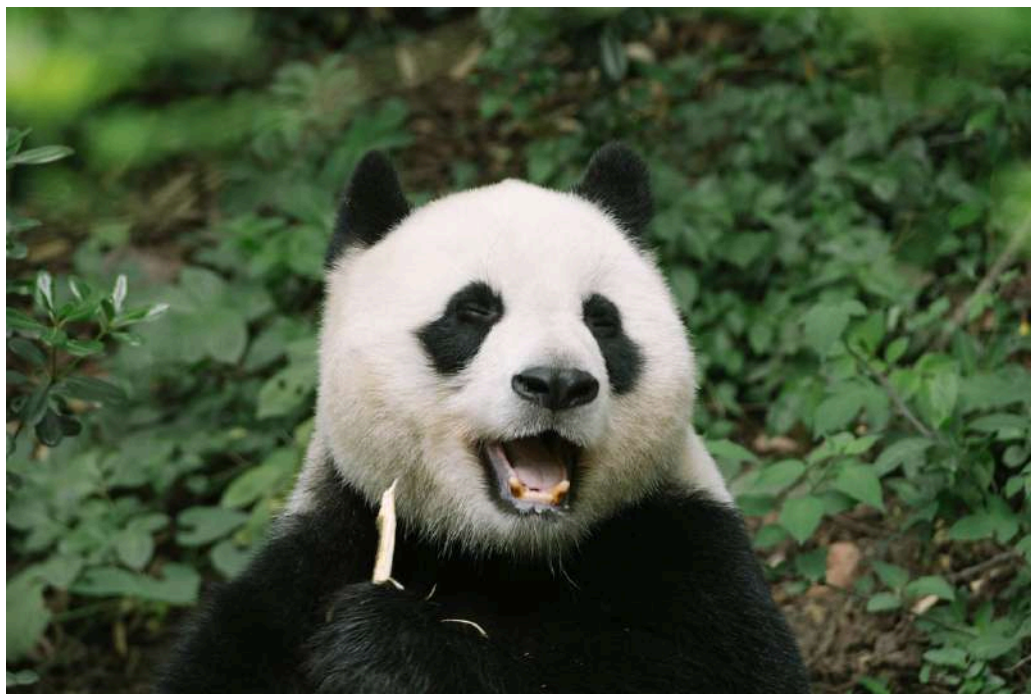


TRAVEL PHOTOGRAPHER

FOR AN UNFORGETTABLE TOUR
FOREVER



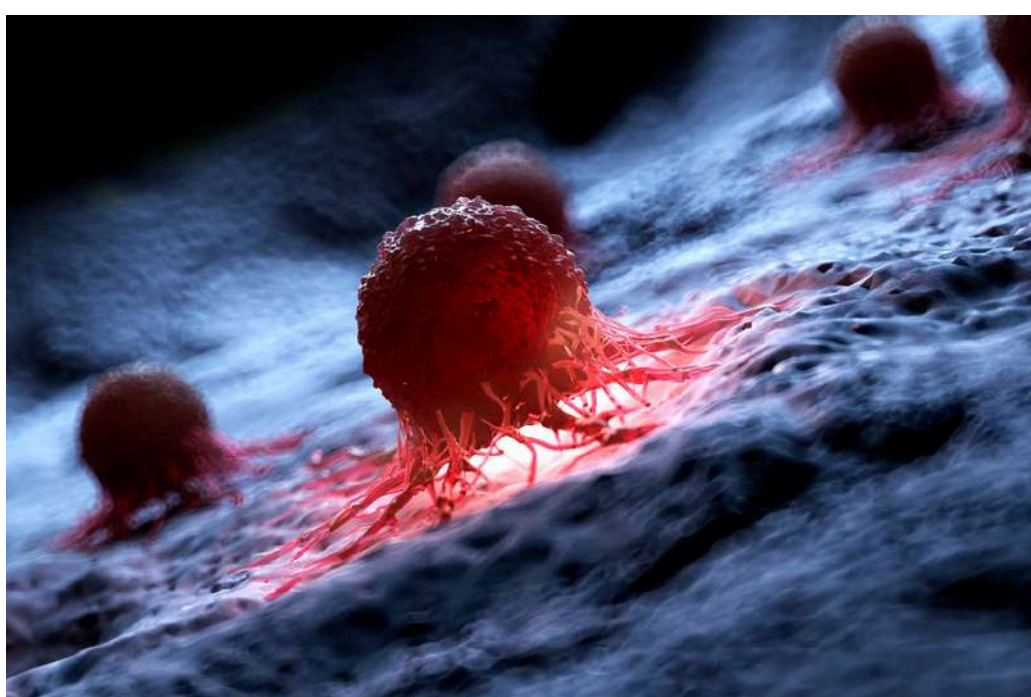
Certain journeys hold a unique significance: a honeymoon, a wedding anniversary marked by the renewal of vows, or cherished moments spent with close friends or family. Such beautiful occasions will be immortalized through professional photography and videography. Should you wish to incorporate this option into your upcoming trip, we are pleased to provide assistance with photographers who can transform your experience into a lasting memory.



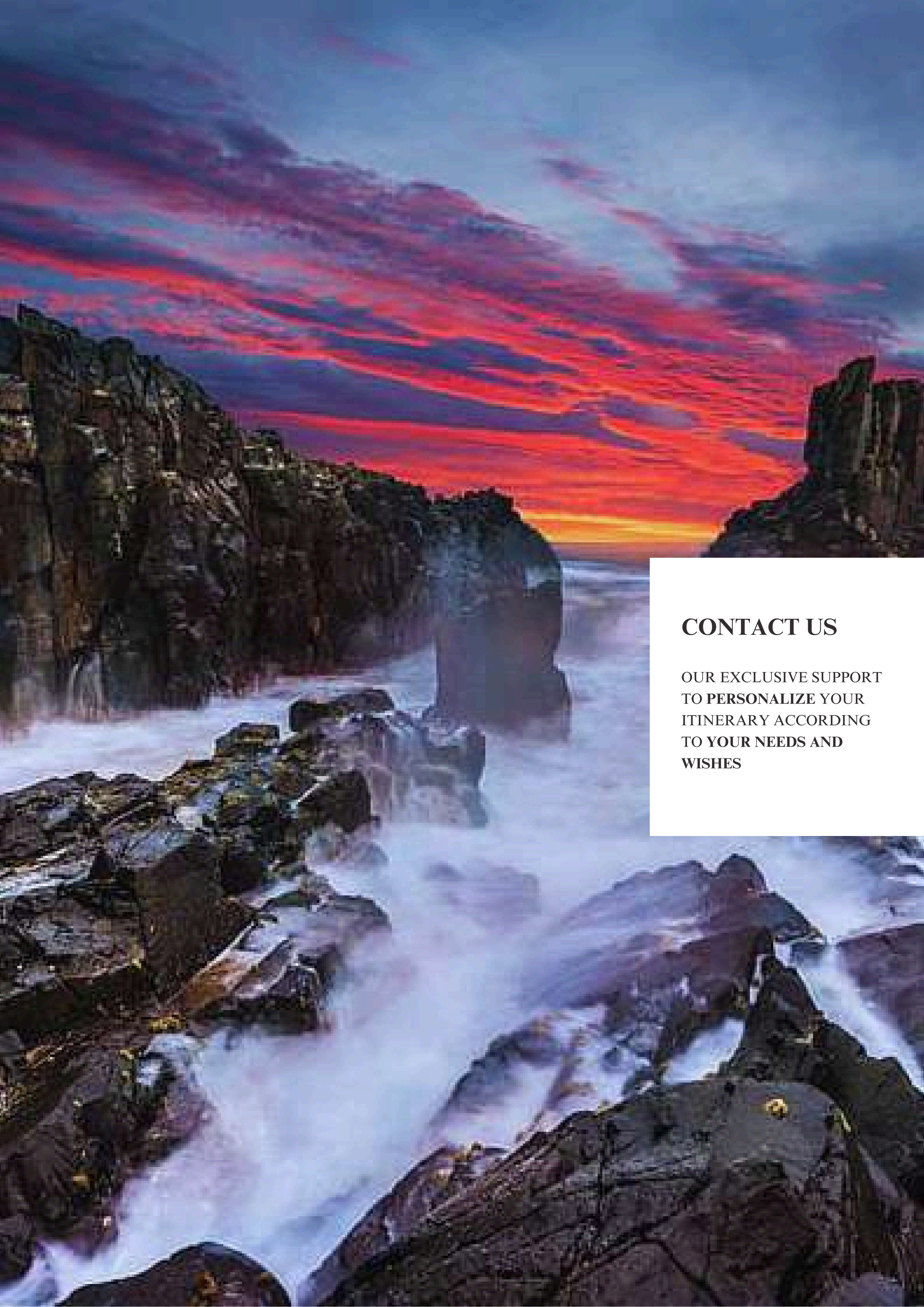
OUR COMMITMENT TO ENVIRONMENTAL PROTECTION AND CANCER RESEARCH



THROUGH OUR TRIPS, WE AIM TO PROVIDE OUR CUSTOMERS WITH THE OPPORTUNITY TO **SUPPORT** NON-PROFIT ORGANIZATIONS DEDICATED TO ADDRESSING THE FOLLOWING GLOBAL CHALLENGES.



- **CONSERVATION OF PLANT AND ANIMAL LIFE**
- **GLOBAL WARMING**
- **CANCER RESEARCH**



CONTACT US

**OUR EXCLUSIVE SUPPORT
TO PERSONALIZE YOUR
ITINERARY ACCORDING
TO YOUR NEEDS AND
WISHES**



WOULD YOU LIKE TO REQUEST A QUOTE?

We hope this brochure has been to your liking and a source of inspiration for your next English language course abroad.

If you would like to organise a tailor-made English course, combined with a personalised travel experience across cities, nature, and authentic itineraries, please click on the dedicated quote request button and complete the relevant form with your requirements.

We will be pleased to contact you shortly to create together a study and travel project fully tailored to you.

TRAVEL QUOTATION REQUEST



Atlantic Travel & Tours Ltd

London, New York
Los Angeles, Miami
Denver

ATLANTIC TRAVEL & TOURS LTD

HEADQUARTERED IN THE UNITED STATES AND THE UNITED KINGDOM

REGISTERED COMPANIES

USA - DENVER - COLORADO - COMPANY REGISTRATION NUMBER: 202 110 96 014

UK - LONDON - COMPANY REGISTRATION NUMBER: 130 288 33

E-MAIL

USA - unitedstatesadministration@atlantictourstravel.com

UK - unitedkingdomadministration@atlantictourstravel.com

WEBSITE

www.visitatlantictraveltours.com

FULL CONTACT DETAILS

www.visitatlantictraveltours.com/contact