

# ATLANTIC TRAVEL & TOURS

ATMOSPHERIC JOURNEYS ON  
THE WATER

---

USA - INSPIRATIONAL  
BROCHURE

[WWW.VISITATLANTICTRAVELTOURS.COM](http://WWW.VISITATLANTICTRAVELTOURS.COM)



## FROM THE CHIEF EXECUTIVE OFFICER - FOUNDER

---

Dear travelers,

This collection was created for those who choose to travel on water **authentically, thoughtfully, and off the beaten path**. We've selected **sailing, catamaran, speedboat, motor yacht, and cruise** experiences for the United States that, in **atmosphere, season, and style**, transcend conventional routes: a journey through light, silence, and watery landscapes that speak to the soul. The proposals are designed to inspire special categories of travelers:

- **Couples on honeymoon or anniversary, seeking silence and wonder**
- **Seniors and over 65s, looking for comfort, beauty and stimulation**
- **People with disabilities, with accessible and carefully designed routes**
- **Students, with experiences that combine learning, observation and adventure**

Get inspired. We're ready to guide you toward **new horizons**, accompanying you through every phase, from design to implementation, ensuring **flexibility, quality, and strong cultural value**.

Choose Atlantic Travel & Tours to transform your trips into memorable opportunities for growth and exchange.



*Steve Tabacchi*

DR. STEVE TABACCHI  
CEO - FOUNDER  
ATLANTIC TRAVEL & TOURS



## **REASONS TO TRAVEL WITH US**

**DISCOVER WHAT MAKES  
OUR TOUR OPERATOR  
DISTINCTIVE AND  
UNMATCHED!**

# BESPOKE TRAVEL FOR EVERYONE



## OUR TRAVEL ITINERARIES

We exclusively curate itineraries for innovative and original travel experiences that diverge from the conventional paths of mass tourism. Our aim is for each customer to be the protagonist of their own journey.

## OUR TRAVEL CLASSES

We organize travel for the following classes:

- **FIRST**
- **PREMIUM**
- **ECONOMY**

# WE ORGANIZE ITINERARIES WITH THE FOLLOWING VESSELS



## SAILING BOAT

- ✔ CHARTER
- ✔ TAILOR-MADE TOURS WITH SKIPPER



## SPEEDBOAT

- ✔ CHARTER
- ✔ TAILOR-MADE TOURS WITH SKIPPER



## CATAMARAN

- ✔ CHARTER
- ✔ TAILOR-MADE TOURS WITH SKIPPER



## MOTOR YACHT

- ✔ CHARTER
- ✔ TAILOR-MADE TOURS WITH SKIPPER



## SHIP

- ✔ CRUISES BEYOND THE BOUNDARIES OF TRADITIONAL TOURISM

# EXCLUSIVE ROUTES FOR AUTHENTIC EMOTIONS

## WEEKLY ITINERARIES BY SAILING, MOTORBOAT, CATAMARAN AND MOTOR YACHT

We organize weekly itineraries by sailboat, speedboat, catamaran, and motor yacht, entirely tailored to meet specific needs. Our packages are ideal for exclusive honeymoons, unforgettable anniversary celebrations, and stays designed for groups of over-65s, people with disabilities, and students. Each experience is carefully curated down to the smallest detail, with a focus on comfort, accessibility, and authenticity.

## CRUISES

Our carefully selected cruises stand out for their unique itineraries, far from the beaten tourist track, perfect for travelers seeking authenticity. Each departure is preceded by an original pre-cruise experience, including unusual locations and out-of-the-ordinary activities. Our cruises are designed for honeymoons, anniversaries, groups of over-65s, people with disabilities, and students, with the goal of offering a truly inclusive, engaging, and memorable trip.



# TRAVELER CATEGORIES



## HONEYMOONS

One of the most beautiful and significant events in life warrants celebration with the highest level of attention and meticulous care for every detail.



## ANNIVERSARIES

Seize the exceptional opportunity to commemorate and rejuvenate your bond of love in an ideal setting for the occasion, complete with a potential wedding vow renewal ceremony where applicable.



## DISABLED - GROUPS AND INDIVIDUALS

Life is an experience to be embraced fully, without exceptions. We are here to provide our assistance in organizing customized trips tailored to meet the diverse needs associated with various disabilities.



## SENIOR - GROUPS AND INDIVIDUALS

The ideal moment to embrace life fully and explore the world is now, alongside friends, former colleagues, and family! Seize the opportunity to forge unforgettable memories!



## STUDENTS

Sailing means learning without even realizing it: every route is a living lesson through landscapes, cultures, and nature. Whether you love biology, history, or art, there's always an itinerary that speaks your language...



# ARRIVING IN THE USA WITHOUT ENTERING THROUGH THE BORDER

For intercontinental flights arriving in the USA, prolonged waits at US borders are commonplace; however, after many hours of travel, fatigue and the time difference create an urgent necessity for rest.

If you intend to cross the US border prior to landing in the United States, this is feasible and will enable you to proceed directly to collect your luggage upon arrival without undergoing any inspections.

Should you wish to incorporate this option into your travel itinerary, we would be pleased to assist you.



# PRIORITY CHECK-IN AND CHECKED BAGGAGE

Bid farewell to lengthy check-in queues! With our priority check-in service, you can swiftly obtain your boarding pass and check in your baggage. We are consistently prepared to provide this option, contingent upon airline availability, to enhance your travel experience, whether you are flying in premium or economy class. **Do not squander time; opt for comfort!**



# NO QUEUES AT THE AIRPORT WITH THE FAST TRACK SERVICE



We understand the frustration of enduring lengthy waits at airport security. Therefore, we consistently incorporate fast track access into our travel packages, allowing you to bypass the queue and enjoy a stress-free experience.

The service is contingent upon the availability at each airport, thus we cannot assure its constant accessibility. Nevertheless, we are pleased to announce that it has been implemented in the majority of the airports we utilize. **Seize this opportunity!**





# COMFORT IN AIRPORT LOUNGES

Once reserved solely for business and first-class passengers, airport lounges are now available to travelers in other classes as well. We provide the highest level of comfort and luxury to ensure your airport experience is memorable. In our travel packages, we consistently strive to include access to these exclusive areas at both departure and arrival points (subject to airport and airline availability). Relax, indulge in culinary delights, savor fine beverages, and enjoy refreshing showers, all within elegant and tranquil settings. **Seize this exceptional opportunity!**





	AUD	7.01
	NZD	5.05
	JPY	0.0913
	GBP	11.23
	EUR	9.71
	SGD	5.35
	CNY	7.00



# OTHERS SERVICES

OUR EXCEPTIONAL PARTNERSHIPS WITH DIVERSE SUPPLIERS ENABLE US TO PROVIDE OUR CUSTOMERS WITH THE FINEST OF THE FOLLOWING SERVICES

**ADVANCED LUGGAGE SHIPPING**  
**TOURIST VISAS**  
**CURRENCY EXCHANGE**  
**INSURANCE POLICIES**



## **ONE FREE INDIVIDUAL FOR EVERY 15 PAYING CUSTOMERS**

Take advantage of our **perpetually active** promotion. If you can gather a **minimum of 15 individuals**, one person will receive a **complimentary** trip. Consider anyone who might be interested among family, friends, colleagues, or others. Additionally, if you require a tour leader or tour guide to assist you and your group throughout the entire tour, we can provide this service as well

# ALWAYS TRAVEL WITH A PREMIUM DISCOUNT!



-20%

- ACTIVE YEAR-ROUND
- FOR ALL CATEGORIES OF TRAVELERS
- NO MINIMUM SPENDING THRESHOLD REQUIRED



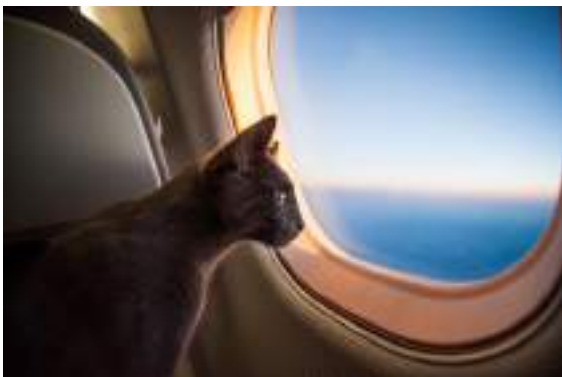
# TRAVEL PHOTOGRAPHER

FOR AN UNFORGETTABLE TOUR  
**FOREVER**



Certain journeys hold a unique significance: a honeymoon, a wedding anniversary marked by the renewal of vows, or cherished moments spent with close friends or family. Such beautiful occasions will be immortalized through professional photography and videography. Should you wish to incorporate this option into your upcoming trip, we are pleased to provide assistance with photographers who can transform your experience into a lasting memory

# TRAVELING WITH PETS



Do you wish to travel but are uncertain about who to entrust your four-legged companion to? Why not bring him or her along for the adventure? After all, he or she is an essential member of your family. We also arrange customized trips for this specific situation

## **SERVICES OFFERED**

- **TRANSPORT**
- **ACCOMMODATION**
- **PET SITTING SERVICE**
- **TRAVEL INSURANCE FOR ANIMALS**



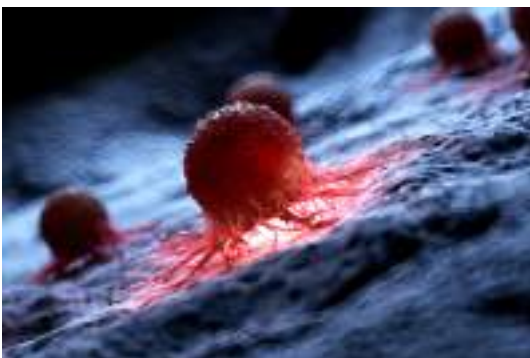
**SERVICE CURRENTLY AVAILABLE PRIMARILY ON SAILING BOATS, CATAMARANS, SPEEDBOATS, AND MOTOR YACHTS**



## **OUR COMMITMENT TO ENVIRONMENTAL PROTECTION AND CANCER RESEARCH**



THROUGH OUR TRIPS, WE AIM TO PROVIDE OUR CUSTOMERS WITH THE OPPORTUNITY TO **SUPPORT** NON-PROFIT ORGANIZATIONS DEDICATED TO ADDRESSING THE FOLLOWING GLOBAL CHALLENGES.



- **CONSERVATION OF PLANT AND ANIMAL LIFE**
- **GLOBAL WARMING**
- **CANCER RESEARCH**



## **MODEL ITINERARIES**

OUR ITINERARIES TO  
INSPIRE YOU AND TO CRAFT  
AN ADVENTURE **BEYOND**  
THE COMMON PATHS OF  
MASS TOURISM

# NORTHEAST USA

**NEW YORK, NEW JERSEY,  
MASSACHUSETTS, CONNECTICUT,  
RHODE ISLAND, VERMONT, NEW  
HAMPSHIRE, MAINE,  
PENNSYLVANIA, DELAWARE,  
MARYLAND, WASHINGTON D.C.**

**BETWEEN ADVENTURE IN NATURE,  
EXCLUSIVE NAVIGATION AND  
COASTAL LANDSCAPES**

From the silence of Maine's secluded bays to the tranquil waters of Cape Cod, from the historic charm of Newport to the nature reserves of Chesapeake Bay, the Northeast offers a unique array of marine and coastal experiences. Here, sailing becomes an immersion in authentic nature, amidst untouched trails, secluded beaches, and villages steeped in authentic tradition. Every itinerary by sailboat, motorboat, catamaran, motor yacht, and cruise transforms into an exclusive journey through precious ecosystems and atmospheres far from the crowds. The area is perfect for those seeking relaxation, adventure, and cultural discovery in harmony with the land, with opportunities for everyone, including those with limited mobility. This corner of America invites you to explore new horizons on peaceful and evocative voyages, where every landing tells a story





# NEW YORK - SEVEN DAYS AMONG LIGHTHOUSES, BAYS AND THE SILENCE OF THE WATER

WEEKLY ITINERARY BY SAILING, MOTORBOAT, CATAMARAN, AND MOTOR YACHT

IDEAL SEASON: FROM THE END OF MAY TO THE END OF SEPTEMBER

SUITABLE FOR:

- COUPLES ON HONEYMOON OR ANNIVERSARY
- ACTIVE SENIORS AND SLOW TRAVELERS
- FAMILIES LOOKING FOR ORIGINAL EXPERIENCES AND NATURE
- PEOPLE WITH DISABILITIES, IF ON BOARD EQUIPPED CATAMARANS OR MOTORYACHTS
- LOVERS OF PHOTOGRAPHY, BIRDWATCHING AND LOCAL CRAFTS

From the calm waters of **Long Island Sound**, a journey begins that escapes the hustle and bustle of the city, following the most intimate and refined coastline of New York State. The route opens with a stop in **Cold Spring Harbor**, where woods, historic homes, and botanical gardens offer slow, fragrant strolls. The voyage continues east, toward the secluded **Shelter Island**, a world suspended between calm waters and wooded paths, perfect for a night at anchor under a clear sky.

Further east, **Montauk** awaits with its ancient lighthouse and windswept cliffs: a place of memories and panoramas, where the coast speaks unfiltered. The route then turns toward **Fire Island**, a thin strip of sand where cars are absent, only footpaths and bicycles. Here, disembark to discover protected dunes, villages with a retro charm, and artisans who transform salt and wood into works of art.

The return route passes through secret coves between **Bay Shore** and **Oyster Bay**, where the coast narrows, the ports become discreet, and time slows once again. A final anchorage offers a silent sunset over the **Sound**: a closing moment suspended between light, sea, and memory.





# NEW JERSEY - SEVEN DAYS OF SECLUDED COVES, LIGHTHOUSES, AND PRISTINE NATURE

WEEKLY ITINERARY BY SAILING, MOTORBOAT, CATAMARAN, AND MOTOR YACHT

IDEAL SEASON: FROM MAY TO MID-SEPTEMBER

SUITABLE FOR:

- COUPLES ON HONEYMOON OR ANNIVERSARY
- FAMILIES WHO LOVE NATURE AND LOCAL CULTURE
- ACTIVE SENIORS AND LANDSCAPE PHOTOGRAPHERS
- DISABLED (EQUIPPED CATAMARAN OR MOTOR YACHT)
- ECOTOURISTS OR LOVERS OF AUTHENTICITY

From the sheltered bay of **Sandy Hook**, a journey uncharted by conventional tourism begins, tracing a route that glides along the hidden coast of New Jersey. It slowly skirts **Barnegat Bay**, where the calm water reflects the sky and ancient lighthouses watch over the salt flats. A stop at the Barnegat Lighthouse offers a view encompassing sea and silence, followed by a picnic among dunes and windswept paths.

The voyage continues toward the tranquil mouths of **Manasquan Inlet**, an ideal landing point for lesser-known beaches like **Sea Girt** or **Spring Lake**, where the waves lap the sand in a rarefied balance. Further south, **Cape May** welcomes you with its Victorian homes and the discreet elegance of an evening at the harbor, while further inland, coastal vineyards offer tastings surrounded by lavender and salty breezes.

The return route passes through **Corson's Inlet**, a wild nature reserve explored by kayak or on foot amid herons, dunes, and shallow water. The final stop is a sensory experience: the seaside village of **Tuckerton**, where the past lives on in artisan workshops and fishermen's stories. The sea accompanies the final crossing, cradling the vessel back to the starting point, with the light of sunset closing the journey like a masterpiece.





# MASSACHUSETTS - "FROM MONOMOY TO WELFLEET: A WEEK BEYOND TIME"

WEEKLY ITINERARY BY SAILING, MOTORBOAT, CATAMARAN, AND MOTOR YACHT

IDEAL SEASON: FROM THE END OF MAY TO THE EARLY OCTOBER

SUITABLE FOR:

- COUPLES ON HONEYMOON OR ANNIVERSARY
- FAMILIES WHO LOVE NATURE AND LOCAL CULTURE
- ACTIVE SENIORS AND LANDSCAPE PHOTOGRAPHERS
- DISABLED (EQUIPPED CATAMARAN OR MOTOR YACHT)
- ECOTOURISTS OR LOVERS OF AUTHENTICITY

From the quiet of **Chatham Harbor**, a journey begins, avoiding the crowded routes to embrace the wild beauty of the south. The sail glides along the thin sandbar of **Monomoy Island**, where the landscape unfolds amidst colonies of seals, migratory birds, and wind-sculpted dunes. A stop ashore offers the intimate experience of guided birdwatching, followed by a picnic on the beach, in a silence that exudes freedom.

Head for **Pleasant Bay**, where the calm waters and inland bays become ideal havens for a sunset anchorage, amidst golden reflections and tranquil dives. The journey continues to the most authentic soul of Cape Cod: **Wellfleet**, with its picturesque harbor and fresh oysters served by local producers, true custodians of the taste of the ocean. A short hike along the **Great Island Trail** reveals a world of salt marshes, sandy paths, and colonial memories suspended in time.

On the return journey, the last stop is a hidden gem: **Bound Brook Island**, immersed in the silence of nature. Here, a ceramics workshop hidden among the trees opens its doors to a private, sensory experience, where earth and hands tell ancient stories.





# CONNECTICUT - ALONG THE HIDDEN COAST BETWEEN DISCREET LIGHTHOUSES, COLONIAL TOWNS AND SILENT BAYS

WEEKLY ITINERARY BY SAILING, MOTORBOAT, CATAMARAN, AND MOTOR YACHT

IDEAL SEASON: FROM JUNE TO SEPTEMBER

SUITABLE FOR:

- HONEYMOONS, ANNIVERSARIES, SLOW COUPLES
- ACTIVE AND CURIOUS SENIORS
- FAMILIES WITH OLDER CHILDREN
- CULTURAL TRAVELLERS AND LOVERS OF SMALL VILLAGES
- PEOPLE WITH DISABILITIES, ON EQUIPPED CATAMARANS OR MOTORYACHTS
- LOVERS OF CRAFTS, LOCAL FOOD AND COLONIAL ATMOSPHERES

The journey begins in **Stonington**, one of New England's oldest ports, where stone houses and fishermen's nets tell stories of slower times. We set sail, sailing past the **Stonington Harbor Lighthouse**, leaving the more crowded coastline behind to navigate calm, sheltered waters.

The first stop is **Mystic**, which, in addition to its famous historic port, hides a network of canals and artisan workshops. Here, a private tour of a violin-making workshop reveals the profound connection between sea, wood, and sound. The tour continues toward **Noank** and its quiet bays, perfect for a night at anchor under the stars.

The route continues to **Guilford**, where a shore excursion takes you through the marsh trails of **Chaffinch Island**, with saltwater views and boardwalks suspended over the marsh. On board, a dinner of local oysters concludes the day with taste and sobriety.

The following days take us to hidden ports like **Branford** and **Essex**, timeless towns where you can explore naval museums, botanical gardens, and farmers' markets. The final stretch of the journey passes through **Old Saybrook**, among solitary lighthouses, gentle dunes, and art studios immersed in the greenery. The return to **Stonington** is slow, as if trying to capture every moment.





# RHODE ISLAND - A JOURNEY AWAY FROM MASS TOURISM, DISCOVERING HIDDEN COVES AND SECRET FLAVORS

## WEEKLY ITINERARY BY SAILING, MOTORBOAT, CATAMARAN, AND MOTOR YACHT

IDEAL SEASON: FROM MAY TO MID-OCTOBER

### SUITABLE FOR:

- HONEYMOONS, ANNIVERSARIES, SLOW COUPLES
- NATURE AND LIGHT TREKKING LOVERS
- SENIORS AND OVER 65S WHO PREFER QUIET ENVIRONMENTS
- FAMILIES WITH CURIOUS CHILDREN
- PEOPLE WITH DISABILITIES ON EQUIPPED VESSELS (MOTORYACHTS OR CATAMARANS)
- PASSIONATE ABOUT CRAFTSMANSHIP AND AUTHENTIC FLAVORS

The journey begins from the small and secluded port of **Hammersmith Farm**, a hidden gem lesser-known than Newport, where the silence is broken only by the gentle rhythm of the waves. From here, the route glides along wild coastlines and secret coves, reaching **Sakonnet Point**, where the lighthouse watches over deserted beaches and coves that seem forgotten by time.

A shore excursion leads to the ancient **Fones Cliffs Preserve**, a natural oasis nestled between cliffs overlooking the ocean and enchanting forests, perfect for a rejuvenating hike away from the crowds. Nearby, the village of **Little Compton** welcomes visitors with artisan markets and small restaurants serving freshly caught oysters and seafood.

We continue to **Prudence Island**, a small island seldom visited and immersed in a sense of timelessness. Here, you can explore on foot or by bike the quiet paths, deserted beaches, and small bays where time seems to have stood still. A visit to a local artisan's workshop offers an immersion in the island's creative tradition.

The return journey through the inlets of **Narragansett Bay** offers exclusive views, with stops in secluded coves where you can enjoy the sunset in complete privacy, accompanied only by the song of the birds and the scent of the sea.





# VERMONT - BETWEEN SECRET LAKES AND ENCHANTED FORESTS, A SLOW ADVENTURE IN THE GREEN HEART OF VERMONT

WEEKLY ITINERARY BY SAILING, MOTORBOAT, CATAMARAN, AND MOTOR YACHT

IDEAL SEASON: FROM JUNE TO OCTOBER

SUITABLE FOR:

- HONEYMOONS, ANNIVERSARIES, SLOW COUPLES
- PEOPLE WITH DISABILITIES ON EQUIPPED VESSELS (MOTORYACHTS OR CATAMARANS)
- COUPLES SEEKING TRANQUILITY AND PICTURESQUE LANDSCAPES
- FAMILIES WITH ACTIVE CHILDREN
- SENIORS AND OVER-65S SEEKING RELAXATION AND FRESH AIR
- LOVERS OF LOCAL FOOD AND WINE AND RURAL EXPERIENCES

From the picturesque port of **Burlington**, we set sail toward the crystal-clear waters of **Lake Champlain**, avoiding the most popular routes to immerse ourselves in secluded bays and quiet coves, where time seems to slow down and nature reigns supreme. Along the way, stops at small fishing villages and organic farms offer authentic experiences: farm-to-table markets, meetings with local producers, and tastings of fresh, authentic produce.

Continuing north, you'll reach **North Hero Island**, a haven nestled among maple forests and tranquil beaches, ideal for kayaking or short walks on untouched trails, in an environment that combines peace and natural beauty. Here, the calm water blends perfectly with the deep green of the forests, creating an almost fairytale-like landscape that's hard to take your eyes off.

We then sail to **South Hero**, where small vineyards and wooden houses tell stories of ancient settlers and a modern passion for sustainable agriculture. A visit to an artisanal cheese farm offers a unique opportunity to discover authentic flavors and experience rural life, rich in traditions and a strong connection to the land.

The journey concludes with a slow sail along the lake's eastern shore, passing small beaches and secluded coves where relaxation is absolute. Here, the sunset paints the sky with warm, deep colors, accompanying the final moment of this week dedicated to discovery, nature, and authentic connection with the most authentic Vermont.





# NEW HAMPSHIRE - BETWEEN SECRET COASTS AND ANCIENT FORESTS, A JOURNEY INTO THE HIDDEN HEART OF THE GRANITE STATE

WEEKLY ITINERARY BY SAILING, MOTORBOAT, CATAMARAN, AND MOTOR YACHT

IDEAL SEASON: FROM MAY TO OCTOBER

SUITABLE FOR:

- HONEYMOONS, ANNIVERSARIES, SLOW COUPLES
- PEOPLE WITH DISABILITIES ON EQUIPPED VESSELS (MOTORYACHTS OR CATAMARANS)
- COUPLES SEEKING TRANQUILITY AND PICTURESQUE LANDSCAPES
- FAMILIES WITH ACTIVE CHILDREN
- SENIORS AND OVER-65S SEEKING RELAXATION AND FRESH AIR
- FOOD AND WINE ENTHUSIASTS AND LOCAL TRADITIONS

Leaving the tranquil port of **Portsmouth**, this itinerary winds along secluded bays and rocky shores where the constant sound of the sea intertwines with the rustling of oaks and ancient trees that line the coastline. Sailing south, you pass hidden coves and small, secluded beaches, true oases of peace where time seems to have stood still, perfect for regenerating stops and swims in the cool, clear waters of the Atlantic.

On land, the picturesque village of **Rye** welcomes you with coastal walks and historic cottages, far from mass tourism, offering an authentic immersion in New England charm. A hike through **Odiorne Point State Park** offers further discoveries: secluded coves, scenic cliffs, and a still wild and unspoiled nature.

Continuing towards **Hampton Falls**, you will encounter small farms and local producers who open their doors for exclusive tastings of artisanal cider and handmade cheeses, in a warm, welcoming and authentic atmosphere, perfect for savoring the flavors of the land and local tradition.

The return journey along the coast offers glimpses of unspoiled nature and rare silence, with the possibility of a stop on **Seabrook Island**, a little-known destination and ideal for a final regenerating swim at sunset, with the colors reflecting on the calm water and a sense of profound serenity.





# MAINE - BETWEEN HIDDEN FJORDS AND FISHING VILLAGES, AN AUTHENTIC JOURNEY THROUGH WILD NATURE AND MARITIME TRADITIONS

WEEKLY ITINERARY BY SAILING, MOTORBOAT, CATAMARAN, AND MOTOR YACHT

IDEAL SEASON: FROM JUNE TO SEPTEMBER

SUITABLE FOR:

- HONEYMOONS, ANNIVERSARIES, SLOW COUPLES
- PEOPLE WITH DISABILITIES ON EQUIPPED VESSELS (MOTORYACHTS OR CATAMARANS)
- COUPLES SEEKING TRANQUILITY AND PICTURESQUE LANDSCAPES
- SENIORS AND OVER-65S SEEKING RELAXATION AND FRESH AIR
- FISHING AND SEAFOOD ENTHUSIASTS

From the quiet port of **Castine**, far from the crowded tourist circuits, begins a journey that winds through secret coves and quiet bays, where the intense scent of the sea mingles with that of damp wood and freshly harvested seaweed. Sailing south, you pass deserted beaches and small, hidden coves, natural refuges where the local wildlife displays itself in all its spontaneity, including seagulls, seals, and fish eagles.

A stop ashore on the island of **Isle au Haut**, a rarely visited treasure trove of pristine beauty, offers the opportunity to hike through ancient pine forests, cliffs overlooking the ocean, and hidden trails offering breathtaking views, coming into direct contact with the true rural and wild soul of Maine.

We then continue towards **Blue Hill Bay**, a remote and little-known corner where local fishermen gather to prepare the traditional lobster boil, an open-air culinary experience, with authentic flavors and a family atmosphere, in a natural setting that invites relaxation and conviviality.

The journey concludes with a slow and evocative sail along the coast to the port of **Milbridge**, crossing narrow fjords and silent inlets that offer intimate views and precious silence, perfect for enjoying a postcard-perfect sunset and a last moment of peace before returning.





# PENNSYLVANIA - A FRESHWATER JOURNEY THROUGH HISTORY AND NATURE, FROM HIDDEN RIVERS TO SECRET VISTAS

WEEKLY ITINERARY BY SAILING, MOTORBOAT, CATAMARAN, AND MOTOR YACHT

IDEAL SEASON: FROM MAY TO OCTOBER

SUITABLE FOR:

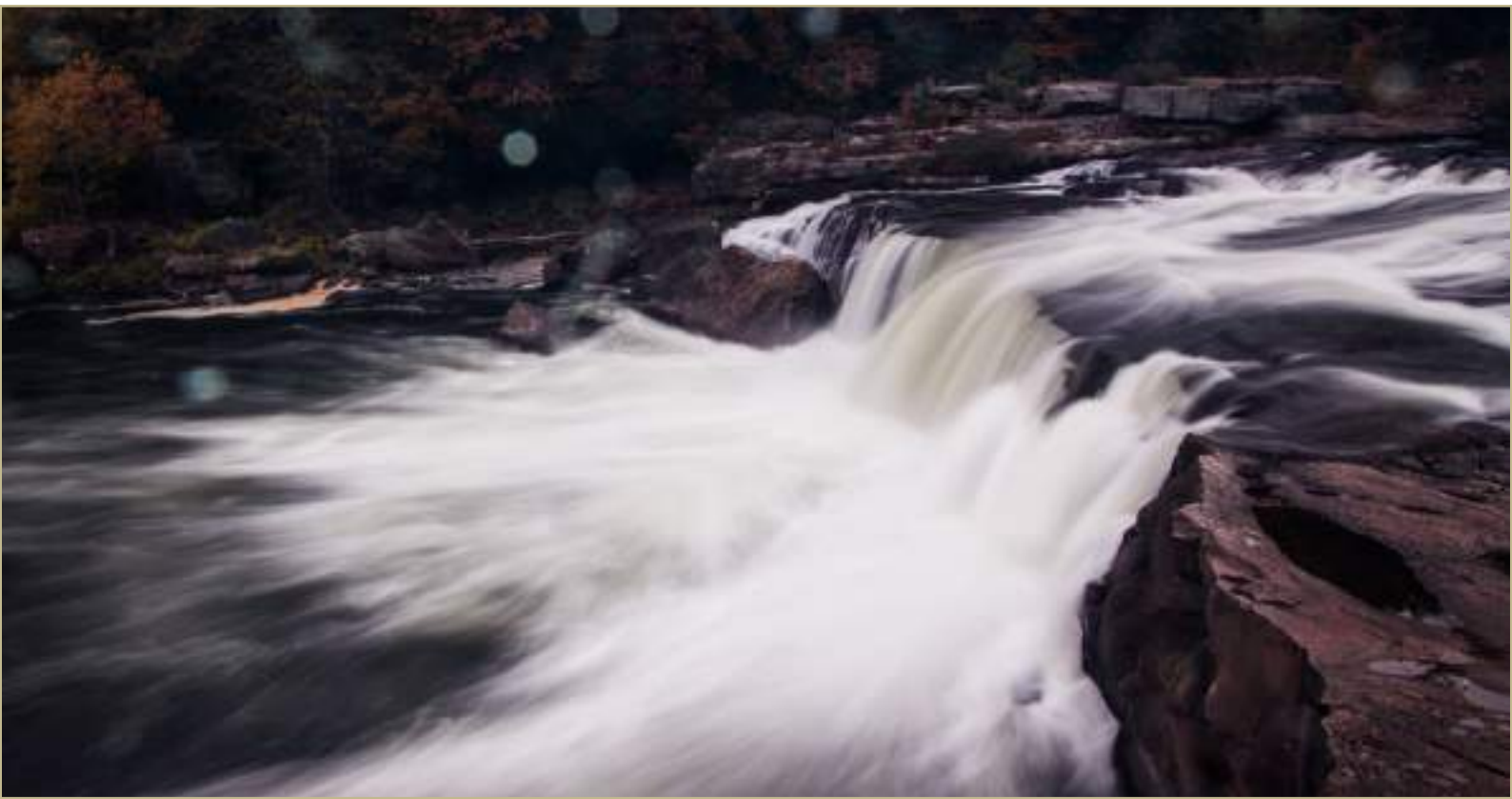
- HONEYMOONS, ANNIVERSARIES, SLOW COUPLES
- PEOPLE WITH DISABILITIES ON EQUIPPED VESSELS (MOTORYACHTS OR CATAMARANS)
- PHOTOGRAPHY AND BIRDWATCHING ENTHUSIASTS
- SENIORS AND OVER-65S SEEKING RELAXATION AND FRESH AIR
- TRAVELERS INTERESTED IN CULTURAL AND OUTDOOR TOURISM

From the tranquil port of **Pittsburgh**, the journey sets out on the calm waters of the **Ohio, Allegheny, and Monongahela rivers**, a tangle of waterways that tell stories of industry, nature, and urban rebirth. The voyage takes place far from the beaten track, amid river landscapes dotted with small historic bridges and green spaces where the pace becomes gentle and relaxed.

A stop ashore in the picturesque village of **Harmar Village** offers the opportunity to immerse yourself in an atmosphere of times gone by, with quiet streets, historic architecture, and local cafes where you can taste typical products and meet the locals.

We continue along the river towards **Ohiopyle State Park**, a must-see for nature lovers: here, wooded trails, hidden waterfalls, and breathtaking viewpoints offer moments of peace and rejuvenation. The river's calm waters are also ideal for those who want to relax with a swim or kayak excursion.

The return to **Pittsburgh** takes place along rural landscapes and lush forests, with the warm light of the sunset coloring the water and accompanying the conclusion of an itinerary dedicated to slow and authentic discovery.





# DELAWARE – FROM QUIET BAYS TO HIDDEN NATURE RESERVES, A DIVE INTO THE SERENITY OF THE MID-ATLANTIC

WEEKLY ITINERARY BY SAILING, MOTORBOAT, CATAMARAN, AND MOTOR YACHT

IDEAL SEASON: FROM APRIL TO OCTOBER

SUITABLE FOR:

- HONEYMOONS, ANNIVERSARIES, SLOW COUPLES
- FAMILIES WITH CHILDREN CURIOUS ABOUT NATURE
- PEOPLE WITH DISABILITIES ON EQUIPPED VESSELS (MOTORYACHTS OR CATAMARANS)
- PHOTOGRAPHY AND BIRDWATCHING ENTHUSIASTS
- SENIORS AND OVER-65S SEEKING RELAXATION AND FRESH AIR

From the quiet port of **Lewes**, the journey sets sail toward the calm waters of **Delaware Bay**, avoiding the most popular routes to immerse yourself in a world of secluded coves and nearly deserted beaches, where nature reveals its most intimate authenticity. Along the way, colonies of migratory birds populate the protected wetlands, offering a unique spectacle of wildlife and tranquility.

A stop ashore at **Prime Hook National Wildlife Refuge** allows you to immerse yourself in a landscape of salt marshes and hidden trails, perfect for relaxing walks and nature observations in a pristine and rarely visited environment. Here, the silence is broken only by the calls of birds and the rustling of reeds in the wind.

Continuing south, the route leads to the **Cape Henlopen** peninsula, a hidden gem with golden dunes and little-known trails ideal for short hikes away from the crowds. After the hike, a break on the beach offers moments of pure relaxation, with a view of the ocean stretching out in all its majesty to the horizon.

The return journey passes through little-explored channels and inlets, offering the opportunity to enjoy an intimate sunset, surrounded by silence and the song of waterbirds, in a journey finale that celebrates the calm and natural beauty of this little-known land.





# MARYLAND – ON THE QUIET ROUTES OF THE CHESAPEAKE BAY, AMONG LOCAL FLAVORS AND DREAMY SCENERY

WEEKLY ITINERARY BY SAILING, MOTORBOAT, CATAMARAN, AND MOTOR YACHT

IDEAL SEASON: FROM APRIL TO OCTOBER

SUITABLE FOR:

- HONEYMOONS, ANNIVERSARIES, SLOW COUPLES
- FAMILIES LOOKING FOR A SLOW AND IMMERSIVE VACATION
- PEOPLE WITH DISABILITIES ON EQUIPPED VESSELS (MOTORYACHTS OR CATAMARANS)
- NATURE AND CULTURAL PHOTOGRAPHY ENTHUSIASTS
- SENIORS AND OVER-65S SEEKING RELAXATION AND FRESH AIR

From the picturesque port of **St. Michaels**, a journey begins that winds along the tranquil waters of the **Chesapeake Bay**, avoiding the most popular routes to offer the thrill of discovering secluded coves and isolated beaches, where the silence is broken only by the song of birds and the gentle rustling of leaves in the wind.

A must-see on land is the **Eastern Neck Island Nature Reserve**, a refuge for herons, ospreys, and many other rare species that inhabit this corner of natural paradise. Here, guided walks along little-known trails allow you to immerse yourself in pristine nature, breathing in an atmosphere of peace and tranquility away from the crowds.

Continuing south, the route leads to **Tangier Island**, a small fishing village seemingly suspended in time. Here, you'll find an authentic experience, steeped in centuries-old traditions, welcoming communities, and a lifestyle deeply rooted in the sea, welcoming visitors with a genuine and discreet charm.

The journey concludes with a sail to **Solomons Island**, a place where cypress forests blend with secluded beaches and a fascinating colonial history. Here, amidst pristine nature and local culture, you can savor authentic cuisine made with fresh produce and traditional recipes, concluding a journey of discovery and relaxation.





# WASHINGTON D.C. – NAVIGATING HISTORY AND CULTURE: A UNIQUE JOURNEY THROUGH HIDDEN MONUMENTS AND VIEWS OF THE POTOMAC

WEEKLY ITINERARY BY SAILING, MOTORBOAT, CATAMARAN, AND MOTOR YACHT

IDEAL SEASON: FROM APRIL TO OCTOBER

SUITABLE FOR:

- HONEYMOONS, ANNIVERSARIES, SLOW COUPLES
- FAMILIES SEEKING RELAXATION AND CULTURE
- PEOPLE WITH DISABILITIES ON EQUIPPED VESSELS (MOTORYACHTS OR CATAMARANS)
- PASSIONATE ABOUT HISTORY, ARCHITECTURE AND URBAN NATURE
- SENIOR AND OVER 65

From the tranquil harbor of **Georgetown**, a journey begins, avoiding the most crowded routes to immerse yourself in the banks of the **Potomac River** at a relaxing and evocative pace. The voyage offers surprising glimpses of the American capital, alternating unique views of the city with little-known green spaces, where time slows and the atmosphere becomes contemplative.

The first stop on land is the **C&O Canal National Historical Park**, a natural and historic oasis with easy and accessible trails, perfect for those with limited mobility, families, and anyone seeking a peaceful experience immersed in nature and history. Here, you can take pleasant walks, admiring a landscape that tells centuries of stories along the canal.

The voyage continues to **Analostan Island**, a quiet, green island ideal for a regenerating break. Easy trails and relaxation areas among ancient trees offer the perfect refuge for those seeking a break immersed in silence and nature, far from the chaos of the city.

On the return journey, the route skirts the **National Mall** from the river, offering an unusual and spectacular view of Washington D.C.'s iconic monuments. The itinerary thus proves accessible and suitable for everyone, combining nature, history, and urban landscapes in a day of discovery and serenity.





REFERENCE CODE  
**ATT - USA - C 1**

# SPRING AMONG LIGHTHOUSES, WHALES AND SEASIDE VILLAGES

SEASONALITY: FROM APRIL TO JUNE

## TRAVEL CATEGORIES

- NATURE LOVERS, PHOTOGRAPHY, TRAVEL LITERATURE
- HONEYMOONS AND ANNIVERSARIES
- DISABLED
- SENIOR / OVER 65
- STUDENTS PASSIONATE ABOUT BIOLOGY

## PRE-CRUISE EXPERIENCE

Before setting sail, catch your breath among the silent peaks of the **White Mountains** in northern **New Hampshire**. Here, wooded trails open onto glacial lakes, covered bridges, and small wooden lodges scented with cinnamon and pine. The nights are clear, the stars seem closer, and time slows. In spring and autumn, nature offers intense spectacles: the brilliant green of the first leaves, or the explosion of color of the foliage. This short stay (3 nights) is a moment of silence before the ocean. Ideal for recharging, reading, and photography. And finding a more human pace before your sea adventure.



## REASONS TO GO

When the frost gives way to the first greenery, the Northeast awakens. Sailing along the **Massachusetts** and **Maine** coasts in spring is an invitation to admire whales off **Cape Ann** and lighthouses nestled between rocks and light fog. Small villages reopen with markets, art galleries, and local festivals. The sea is still silent, but full of promise. The itineraries touch ports rich in history and pristine nature. Strolls along the shoreline, fresh oysters, and hazy sunsets are the order of the day. An ideal cruise for those who love detail, slanted light, and authentic landscapes.



REFERENCE CODE  
**ATT - USA - C 2**

# SUMMER AMONG LIGHTHOUSES AND SEAFOOD: A SLOW CRUISE IN NEW ENGLAND

SEASONALITY: FROM JUNE TO AUGUST

## TRAVEL CATEGORIES

- FOOD AND WINE LOVERS, COASTAL CULTURE, AND LEISURELY TRAVEL
- HONEYMOONS AND ANNIVERSARIES
- DISABLED
- SENIOR / OVER 65
- STUDENTS PASSIONATE ABOUT AMERICAN CULTURE

## PRE-CRUISE EXPERIENCE

Before embarking, spend a couple of days in one of the lesser-known but most authentic regions of the Northeast: **Rhode Island's** hinterland. In **South County or Little Compton**, among stone farmhouses and coastal paths, you'll breathe in the stories of sailors and artisans. You can visit historic windmills, sample local produce, stroll through colonial cemeteries and secluded coves. It's a short but intense journey into the soul of the East Coast, a quiet and cultural preview before setting sail.



## REASONS TO GO

New England's coastal summer has its own rhythm, with its marine flavors and light breezes. Cruises this season alternate swimming in tranquil bays with cultural explorations between **Boston and Bar Harbor**. Long days, clear skies, and vibrant villages welcome travelers seeking authenticity. Kayak excursions, seafood markets, and harbor festivals enliven the stops. The weather is perfect for relaxing on deck and sunset strolls. A summer cruise here is synonymous with a balance between discovery and lightheartedness. Sea and land embrace each other with natural elegance.



REFERENCE CODE  
**ATT - USA - C 3**

# RED LEAVES AND HISTORIC CITIES: FOLIAGE SEEN FROM THE SEA

SEASONALITY: SEPTEMBER AND OCTOBER

TRAVEL CATEGORIES

- LOVERS OF PHOTOGRAPHY, ROMANCE, PAINTING, AMERICAN CULTURE
- HONEYMOONS AND ANNIVERSARIES
- DISABLED
- SENIOR / OVER 65
- STUDENTS IN THE ART OR HISTORY FIELD

## PRE-CRUISE EXPERIENCE

Before embarking, spend three nights discovering authentic, off-the-beaten-path locations near the main ports. In **Rockport**, on the **Massachusetts** coast, stroll through independent art galleries and quaint fishing harbors, savoring the tranquility of a village still far from mass tourism. Or explore **Jamestown**, on **Conanicut Island** near Newport, with its secluded coves, coastal trails, and quaint cafes where you can enjoy local pastries. These quiet, authentic corners offer the perfect introduction to the New England autumn atmosphere, with warm colors, crisp air, and tales of the sea.



## REASONS TO GO

Between September and October, the Northeast transforms into a painting. Cruises this season follow the curves of the coast between **Boston**, **Newport**, and the valleys leading to **Canada**, offering views of fiery hills and small ports shrouded in coppery hues. Every stop is an opportunity to savor mulled cider, stroll among crunching leaves, and discover museums and historic homes. From the deck of the ship, the foliage can be admired in all its splendor, far from the chaos of the road. An itinerary for those seeking poetry and contemplation. Autumn as you've never seen it: by sea.



REFERENCE CODE  
**ATT - USA - C 4**

## **BETWEEN HISTORY AND NATURE: THE SECRET BAYS OF THE MID-ATLANTIC**

**SEASONALITY: FROM APRIL TO JUNE AND SEPTEMBER - OCTOBER**

### **TRAVEL CATEGORIES**

- NATURE LOVERS, CULTURE, COLONIAL HISTORY, TRAVEL WRITING
- HONEYMOONS AND ANNIVERSARIES
- DISABLED
- SENIOR / OVER 65
- ENVIRONMENTAL SCIENCE OR AMERICAN HISTORY STUDENTS

### **PRE-CRUISE EXPERIENCE**

Discover the slow, secret side of the American coast by spending two nights exploring the shores of **Chesapeake Bay**, between **St. Michaels and Easton**, in eastern **Maryland**. Fishermen's cottages, calm waters, and small harbors that seem frozen in time. You can bike among the farms, sample fresh blue crab, or stroll along wooden piers still damp with dew at dawn. It's the perfect introduction to a cruise that seeks horizons rather than cities.



### **REASONS TO GO**

From the **Chesapeake Bay** to the **Delaware** coast, there are off-the-beaten-path itineraries brimming with charm. Between calm waters, nature reserves, and welcoming harbors, this area reveals a gentle nature and a rich history. The landscapes alternate between sea stacks and salt flats, university towns and ancient plantations. Cruises here, especially in spring and early fall, offer the opportunity to slow down, listen, and observe. Far from the usual routes, it's a journey that speaks softly. Perfect for sensitive, curious travelers eager to discover a lesser-known America.

# SOUTHEAST USA

**VIRGINIA, WEST VIRGINIA,  
NORTH CAROLINA, SOUTH  
CAROLINA, GEORGIA, FLORIDA,  
ALABAMA, MISSISSIPPI,  
TENNESSEE, KENTUCKY,  
ARKANSAS, LOUISIANA**

**AMONG SILENT DELTAS, HISTORIC  
VILLAGES AND DEEP-FLAVOURED  
NAVIGATIONS**

From the waters of the Lowcountry to the Gulf Coast, from the bayous of Louisiana to the tranquil bays of North and South Carolina, the Southeastern United States offers a mosaic of authentic and engaging itineraries by sea and river. Every voyage aboard—by sailboat, catamaran, motorboat, motor yacht, or cruise—is a sensory experience, taking in untouched islands, coastal communities with vibrant pasts, and landscapes that speak of resilience and memory. Land stops reveal local cultures, African-American stories, and traditional flavors, in places often off the beaten path. Ideal for families, seniors, honeymoons, anniversaries, or students, and with accessible options for those with disabilities, this region invites slow and profound discovery. A unique way to experience the American South: amidst water, roots, and beauty





# VIRGINIA – BETWEEN QUIET BAYS AND COLONIAL HISTORIES: AN AUTHENTIC JOURNEY THROUGH NATURE AND CULTURE ALONG THE CHESAPEAKE COAST

WEEKLY ITINERARY BY SAILING, MOTORBOAT, CATAMARAN, AND MOTOR YACHT

IDEAL SEASON: FROM APRIL TO OCTOBER

SUITABLE FOR:

- HONEYMOONS, ANNIVERSARIES, SLOW COUPLES
- FAMILIES
- PEOPLE WITH DISABILITIES ON EQUIPPED VESSELS (MOTORYACHTS OR CATAMARANS)
- NATURE AND HISTORY ENTHUSIASTS
- SENIOR AND OVER 65

From **Yorktown Harbor**, a journey begins, plunging into the calm, uncrowded waters of the **Chesapeake Bay**, far from the beaten tourist track. The voyage winds through quiet coves and secluded beaches, where nature reveals itself in all its lush authenticity, offering glimpses of peace and pristine beauty.

The first stop on land takes you to the **Chesapeake Bay National Estuarine Research Reserve**, a protected area offering accessible trails and observation points perfect for birdwatchers and those who enjoy long walks immersed in nature. The facilities are designed to accommodate people with limited mobility, making this an inclusive and enjoyable experience for everyone.

The route continues to **Cape Charles**, a charming fishing village where time seems to have stood still. Here you can discover local traditions, savor the timeless atmosphere, and enjoy authentic dishes prepared with fresh seafood, the true protagonists of the local cuisine.

On the return journey, the cruise passes through rural landscapes and tranquil beaches, offering moments of true relaxation and a deep connection with the surrounding natural environment, concluding an itinerary that combines nature, culture, and tranquility in an unforgettable experience.





# WEST VIRGINIA – BETWEEN MAJESTIC GORGES AND MOUNTAIN TRADITIONS ALONG THE POTOMAC AND SHENANDOAH RIVERS

WEEKLY ITINERARY BY SAILING, MOTORBOAT, CATAMARAN, AND MOTOR YACHT

IDEAL SEASON: FROM MAY TO OCTOBER

SUITABLE FOR:

- HONEYMOONS, ANNIVERSARIES, SLOW COUPLES
- PEOPLE WITH DISABILITIES ON EQUIPPED VESSELS (MOTORYACHTS OR CATAMARANS)
- NATURE AND LANDSCAPE PHOTOGRAPHY LOVERS
- SENIOR AND OVER 65

From the river port of **Harpers Ferry**, an evocative journey begins along the calm, sheltered waters of the **Potomac and Shenandoah rivers**, far from the beaten track and immersed in pristine nature. The voyage winds through impressive rocky gorges, lush forests, and small villages that tell stories of a past rich in tradition and mountain spirit.

The first stop on land leads to the **Canaan Valley National Wildlife Refuge**, a natural oasis with fully accessible and well-maintained trails, ideal for those who want to observe local wildlife up close and immerse themselves in breathtaking views, all in maximum safety and comfort.

Continuing the route, you reach the picturesque village of **Thomas**, where you can experience a rural atmosphere brimming with artistic creativity and local craftsmanship. Here, you can savor typical mountain products, meet artisans, and enjoy an authentic experience steeped in the traditions and slow pace of country life.

On the return journey, cruising the river offers moments of pure serenity, accompanied by natural landscapes that seem to tell ancient and authentic stories, giving a profound sense of peace and connection with nature.





# NORTH CAROLINA – BETWEEN TRANQUIL COASTS AND RURAL LANDSCAPES: AN AUTHENTIC JOURNEY ALONG THE WATERS OF THE PAMLICO SOUND

WEEKLY ITINERARY BY SAILING, MOTORBOAT, CATAMARAN, AND MOTOR YACHT

IDEAL SEASON: FROM APRIL TO OCTOBER

SUITABLE FOR:

- HONEYMOONS, ANNIVERSARIES, SLOW COUPLES
- FAMILIES
- PEOPLE WITH DISABILITIES ON EQUIPPED VESSELS (MOTORYACHTS OR CATAMARANS)
- HISTORY AND LOCAL CULTURE ENTHUSIASTS
- SENIOR AND OVER 65

From **Washington Harbor**, a journey begins through the calm, almost pristine waters of **Pamlico Sound**, a vast body of water where nature reigns supreme and the most popular tourist routes seem a distant memory. The cruise takes you past uncrowded islands, thick mangroves, and quiet bays, creating an atmosphere of intimacy and peace perfect for those seeking a true escape from routine.

The first stop on land is the charming village of **Bath**, North Carolina's oldest town, where time seems to have stood still. Here, you can immerse yourself in colonial history by admiring well-preserved museums and original architecture, as well as indulge in local delicacies featuring the freshest seafood, the undisputed star of the local gastronomic tradition.

Continuing our journey, we reach the wild and fascinating **Roanoke Island**, with its nearly deserted beaches and protected nature reserves. This place offers unique opportunities for regenerating walks along nature trails, for birdwatchers, and for those seeking moments of complete relaxation, lulled by the sound of the sea and the singing of birds.

On the way back to the port, the landscape is tinged with the warm hues of sunset, reflecting on the calm water, creating a spectacle of light and color that will remain etched in your heart. An itinerary that gently and serenely concludes an experience of authentic and profound discovery.





# SOUTH CAROLINA – BETWEEN QUIET BAYS AND HISTORIC VILLAGES: A RELAXING JOURNEY ALONG THE COASTS OF THE LOWCOUNTRY

WEEKLY ITINERARY BY SAILING, MOTORBOAT, CATAMARAN, AND MOTOR YACHT

IDEAL SEASON: FROM MARCH TO NOVEMBER

SUITABLE FOR:

- HONEYMOONS, ANNIVERSARIES, SLOW COUPLES
- FAMILIES
- PEOPLE WITH DISABILITIES ON EQUIPPED VESSELS (MOTORYACHTS OR CATAMARANS)
- NATURE AND LOCAL HISTORY LOVERS
- SENIOR AND OVER 65

From the historic port of **Beaufort**, a journey begins through the calm and mysterious waters of the **Lowcountry**, a region characterized by marshes, winding canals, and quiet coves that hold ancient stories of African-American traditions and culture. As you sail, the landscape slowly changes, immersing travelers in a magical atmosphere of golden hues and salty air.

The first stop is on the island of **St. Helena**, where you'll have the opportunity to delve deeply into the area's African-American roots. Here, local communities offer a warm welcome, offering authentic cultural experiences and soul-enriching moments of sharing, including museum visits, craft workshops, and stories of daily life.

The route continues to the stunning **Kiawah Island**, where golden beaches stretch endlessly, framed by nature reserves of rare beauty. Long walks through dunes and palm forests offer moments of regeneration, while the local fauna and the sound of the sea accompany every step in a pure embrace of nature.

On the way back, the calm waters reflect the warm hues of sunset, painting the sky orange and pink. The silence and peace of the Lowcountry conclude this itinerary, leaving in your heart the memory of a slow and authentic discovery.





# GEORGIA – BETWEEN SERENE RIVERS AND FASCINATING COASTS: A RELAXING JOURNEY ALONG THE ALTAMAHA RIVER AND THE GOLDEN ISLES COAST

WEEKLY ITINERARY BY SAILING, MOTORBOAT, CATAMARAN, AND MOTOR YACHT

IDEAL SEASON: FROM MARCH TO NOVEMBER

SUITABLE FOR:

- HONEYMOONS, ANNIVERSARIES, SLOW COUPLES
- FAMILIES
- PEOPLE WITH DISABILITIES ON EQUIPPED VESSELS (MOTORYACHTS OR CATAMARANS)
- LOVERS OF LOCAL CULTURE AND UNIQUE TRADITIONS
- SENIOR AND OVER 65

From the picturesque harbor of **Darien**, you set sail toward the calm, protected waters of the **Altamaha River**, entering a world where wilderness reigns supreme. This unique ecosystem, rich in marshes, forests, and bays, tells age-old stories of flora and fauna, while the golden reflections of the sun rest on the tranquil waters.

The first stop is **Sapelo Island**, a place steeped in mystery and culture, where the traditions of the Gullah-Geechee community are still alive. Here, pristine beaches stretch out to the horizon, far from the hustle and bustle and perfect for those seeking an authentic experience steeped in history.

The journey continues toward **St. Simons Island**, a coastal Georgia gem, where historic lighthouses stand amidst lush gardens and shaded paths. Sandy beaches invite relaxation, while small boutiques and local cafes tell stories of a vibrant past and welcoming present.

On the return journey, the voyage winds through hidden canals and wild marshes, with the sky tinged with the warm hues of sunset. The silence is broken only by the calls of birds, while nature envelops every sense, offering a day ending suspended between peace and wonder.





# FLORIDA – BETWEEN CRYSTALLINE LAGOONS AND WILD COASTS: A UNIQUE JOURNEY THROUGH THE WONDERS OF THE NATURE COAST

WEEKLY ITINERARY BY SAILING, MOTORBOAT, CATAMARAN, AND MOTOR YACHT

IDEAL SEASON: FROM OCTOBER TO MAY

SUITABLE FOR:

- HONEYMOONS, ANNIVERSARIES, SLOW COUPLES
- FAMILIES
- PEOPLE WITH DISABILITIES ON EQUIPPED VESSELS (MOTORYACHTS OR CATAMARANS)
- WILDLIFE AND ECOTOURISM LOVERS
- SENIOR AND OVER 65

From **Crystal River Harbor**, embark on an unforgettable experience amid the calm, clear waters of the **Nature Coast**, a lesser-known region where nature and tranquility reign supreme in the pristine landscape. Days pass by with close encounters with manatees and the rich local birdlife, with guided tours accessible to all that make every moment special and inclusive.

A stop ashore on **Homosassa Island** offers the opportunity to explore protected natural habitats and admire rare species, while the cruise continues to the pristine beaches of **Cedar Key**, a fishing village where time seems to have stood still. Here, the authentic taste of the sea blends with a relaxed atmosphere, offering moments of pure pleasure.

While cruising, you can observe spectacular sunsets that paint the sky pink and orange, while the silence of the water invites meditation and deep relaxation. This itinerary offers a perfect balance between outdoor activities and moments of peace, ideal for rejuvenating body and mind.

The return to the port offers the magic of the sunset over the calm waters, concluding an itinerary of nature, peace and regeneration.





# ALABAMA – SLOW REFLECTIONS BETWEEN FRESHWATER, FORESTS AND SOUTHERN CULTURE

## WEEKLY ITINERARY BY SAILING, MOTORBOAT, CATAMARAN, AND MOTOR YACHT

IDEAL SEASON: FROM APRIL TO OCTOBER

### SUITABLE FOR:

- HONEYMOONS, ANNIVERSARIES, SLOW COUPLES
- FAMILIES
- PEOPLE WITH DISABILITIES ON EQUIPPED VESSELS (MOTORYACHTS OR CATAMARANS)
- BIRDWATCHING, PHOTOGRAPHY, AND LOCAL CULTURE ENTHUSIASTS
- SENIOR AND OVER 65

From the port of **Guntersville**, nestled in the heart of northern Alabama's lake district, you'll embark on a peaceful cruise along the tranquil waters of **Lake Guntersville**, avoiding crowded harbors to explore secluded coves, tree-lined shores, and glimpses of morning mist dancing across the hills. The journey begins with a stop at **Guntersville State Park**, where you can spot bald eagles and explore untouched trails among oaks and pines.

We continue to **Wheeler National Wildlife Refuge**, a little-known gem where nature manifests itself in all its diversity: herons, deer, reed beds, and tranquil lagoons create a timeless atmosphere. A stop ashore includes an accessible guided birdwatching tour and a rustic lunch on the dock, overlooking the water and dense vegetation.

The voyage continues to **Decatur**, where contact with local culture intensifies: you explore historic neighborhoods and small artisan workshops, with the option of taking a private Southern cooking class in a historic residence.

The journey concludes with the return to Guntersville, skirting the lake's inner islands and stopping for a final excursion to **Cathedral Caverns State Park**: an accessible caving experience, perfect for those seeking an out-of-the-ordinary adventure among colossal stalactites and local legends.





# MISSISSIPPI – NAVIGATING THE HISTORY, SILENT MARSHES, AND TRADITIONS OF THE DELTA

WEEKLY ITINERARY BY SAILING, MOTORBOAT, CATAMARAN, AND MOTOR YACHT

IDEAL SEASON: MARCH TO NOVEMBER

SUITABLE FOR:

- HONEYMOONS, ANNIVERSARIES, SLOW COUPLES
- NATURE AND PHOTOGRAPHY LOVERS
- PEOPLE WITH DISABILITIES ON EQUIPPED VESSELS (MOTORYACHTS OR CATAMARANS)
- AFRICAN-AMERICAN MUSIC AND CULTURE ENTHUSIASTS
- SENIOR AND OVER 65

From the tranquil port of **Vicksburg**, on the banks of the majestic **Mississippi River**, a journey begins that strays from the tourist routes to immerse itself in the slow, mysterious waters of the swamps and bayous, where time seems to flow at a different pace. The cruise follows the river through forests of cypress trees and branches of Spanish moss, while the air is filled with ancient stories and legends of the Deep South.

A shore stop in the **Holly Springs National Forest** offers shaded trails and accessible paths, perfect for a relaxing stroll among the area's native flora and for observing local wildlife, such as herons and alligators, from a safe distance.

Continuing along the river, you reach the small village of **Clarksdale**, the beating heart of the blues, where a private tour of the historic venues allows you to experience the authentic atmosphere of this music that changed the world. Here, you can also participate in a guitar workshop or a private jam session.

The journey concludes with the return to **Vicksburg**, passing through quiet inland bays and less explored areas, ideal for a final dip in the golden reflections of the sunset on the river, accompanied by the song of birds and the silence of the waters.





# TENNESSEE – AMONG MAJESTIC RIVERS, AUTHENTIC MUSIC AND PRISTINE NATURE ALONG THE TENNESSEE RIVER

**WEEKLY ITINERARY BY SAILING, MOTORBOAT, CATAMARAN, AND MOTOR YACHT**

**IDEAL SEASON: FROM APRIL TO OCTOBER**

**SUITABLE FOR:**

- HONEYMOONS, ANNIVERSARIES, SLOW COUPLES
- FAMILIES
- PEOPLE WITH DISABILITIES ON EQUIPPED VESSELS (MOTORYACHTS OR CATAMARANS)
- LOVERS OF MUSIC AND SOUTHERN TRADITIONS
- SENIOR AND OVER 65

From the tranquil port of Chattanooga, embark on a river journey exploring the calm waters of the Tennessee River, avoiding the most crowded routes to embrace captivating natural and cultural landscapes. The journey winds through rocky gorges, lush forests, and small coves where nature displays all its diversity and beauty.

A shore stop at Chickamauga and Chattanooga National Military Park allows you to immerse yourself in the history of the American Civil War, with accessible trails and guided tours in environments that tell stories of courage and remembrance, perfect even for those with limited mobility.

Continuing along the river, you reach Lynchburg, a village famous for the historic Jack Daniel's distillery. Here, you can enjoy private tours and exclusive tastings, uncovering the secrets of a centuries-old artisanal tradition in an intimate and evocative atmosphere.

The journey continues toward the river's lesser-known banks, past quiet bays and small rural communities where you can meet local artisans and savor typical southern dishes, including barbecues and specialties made with fresh local produce.

The return to Chattanooga offers one last natural spectacle, with golden sunsets reflecting on the water and the accompaniment of birdsong, concluding an itinerary rich in discoveries, relaxation, and authenticity.





# KENTUCKY – BETWEEN TRANQUIL WATERWAYS, BOURBON TRADITIONS AND LUSH NATURE ALONG THE KENTUCKY RIVER

## WEEKLY ITINERARY BY SAILING, MOTORBOAT, CATAMARAN, AND MOTOR YACHT

IDEAL SEASON: FROM APRIL TO OCTOBER

### SUITABLE FOR:

- HONEYMOONS, ANNIVERSARIES, SLOW COUPLES
- FAMILIES
- PEOPLE WITH DISABILITIES ON EQUIPPED VESSELS (MOTORYACHTS OR CATAMARANS)
- BOURBON ENTHUSIASTS AND ARTISANAL TRADITIONS
- SENIOR AND OVER 65

From the port of **Lexington**, set sail on a river voyage exploring the serene waters of the **Kentucky River**, straying from the more touristy routes to immerse yourself in countryside landscapes, forests, and small villages with authentic charm. The voyage winds through secluded bays, wide bends in the water, and wetlands where the local wildlife displays its full vibrancy.

A first stop ashore in **Berea**, a city famous for its traditional arts and crafts, offers the opportunity to visit local artisans' workshops, discover ceramics and textiles, and participate in creative workshops in a welcoming and authentic environment.

Continuing along the river, you reach **Frankfort**, the state capital, where you can explore lesser-known historic bourbon distilleries, immersing yourself in exclusive tastings and guided tours that reveal the heart of this centuries-old tradition.

The route continues to nature parks like **Raven Run Nature Sanctuary**, a green oasis where you can go on easy hikes along accessible trails and enjoy views of the river, ideal for moments of relaxation and nature observation.

The return to the port of **Lexington** passes through small farming villages and peaceful riversides, with the warm and relaxing atmosphere typical of rural Kentucky, perfect for those seeking an itinerary that combines history, nature, and culture in an intimate and engaging way.





# ARKANSAS – NAVIGATING FORESTS, WATERFALLS, AND HIDDEN TRADITIONS ALONG THE BUFFALO RIVER

WEEKLY ITINERARY BY SAILING, MOTORBOAT, CATAMARAN, AND MOTOR YACHT

IDEAL SEASON: FROM APRIL TO OCTOBER

SUITABLE FOR:

- HONEYMOONS, ANNIVERSARIES, SLOW COUPLES
- FAMILIES
- PEOPLE WITH DISABILITIES ON EQUIPPED VESSELS (MOTORYACHTS OR CATAMARANS)
- LOVERS OF WILD NATURE AND NATIONAL PARKS
- SENIOR AND OVER 65

From the port of **Pine Bluff**, embark on a river journey through the calm, pristine waters of the **Buffalo River**, a natural gem off the beaten tourist track. The voyage winds through lush forests, quiet coves, and waterways that tell stories of ancient Native American populations and American pioneers.

A first stop on land at **Cotter** allows you to discover picturesque little villages and venture along rarely visited paths that lead to hidden waterfalls, ideal for regenerating excursions immersed in greenery and tranquility.

The route continues to **Buffalo National River Park**, one of the last great river wilderness areas in the United States, where you can explore caves, kayak, and observe the abundant local wildlife, including rare birds and deer.

A stop in **Harrison** offers an encounter with local crafts and typical cuisine, with family-run restaurants serving dishes made with fresh, wholesome ingredients in a welcoming and authentic atmosphere.

The return journey along the river offers spectacular views of the limestone cliffs and forests, perfect for moments of contemplation and relaxation, with nature as your only company.





# LOUISIANA – A DEEP DIVE INTO SILENT BAYOUS, CREOLE VILLAGES, AND AUTHENTIC TRADITIONS ALONG THE MISSISSIPPI RIVER

WEEKLY ITINERARY BY SAILING, MOTORBOAT, CATAMARAN, AND MOTOR YACHT

IDEAL SEASON: FROM MARCH TO NOVEMBER

SUITABLE FOR:

- HONEYMOONS, ANNIVERSARIES, SLOW COUPLES
- FAMILIES
- PEOPLE WITH DISABILITIES ON EQUIPPED VESSELS (MOTORYACHTS OR CATAMARANS)
- LOVERS OF NATURE AND CAJUN AND CREOLE CULTURE
- SENIOR AND OVER 65

From the Port of **Baton Rouge**, begin a journey along the majestic **Mississippi River**, straying from the beaten tourist track to explore the hidden bayous and winding canals that characterize the heart of Louisiana. The cruise offers total immersion in landscapes of lush marshes, towering cypress trees, and a diverse fauna of herons, alligators, and migratory birds.

The first stop on land is the picturesque village of **Plaquemine**, where Creole and Cajun traditions blend with local history. Here, you can discover traditional cuisines, live music, and crafts that demonstrate the deep connection to Southern culture.

Continuing, we sail to **Jean Lafitte National Historical Park and Preserve**, a protected area of outstanding natural and historical beauty, offering accessible trails for exploration on foot or by bicycle, as well as guided marsh cruises, perfect for discovering the local flora and fauna at a leisurely pace.

A stop in **Houma** allows you to meet local communities, among fresh produce markets and traditional festivals, enjoying an authentic “Bayou Country” experience away from mass tourism.

The return journey along the Mississippi offers moments of contemplation at sunset, with the lights reflecting on the water and the magical atmosphere of a land rich in history and charm.





REFERENCE CODE  
**ATT - USA - C 5**

# SPRING AMONG SWAMPS, MYSTERIES, AND JAZZ ON THE MISSISSIPPI

SEASONALITY: FROM MARCH TO MAY

TRAVEL CATEGORIES

- HISTORY AND MUSIC ENTHUSIASTS
- HONEYMOONS AND ANNIVERSARIES
- DISABLED
- SENIOR / OVER 65
- STUDENTS OF MUSICOLOGY, ANTHROPOLOGY, AND AMERICAN HISTORY

## PRE-CRUISE EXPERIENCE

Before embarking on the great river, treat yourself to a three-night stay in **Natchez, Mississippi**, a hidden gem on the banks of the Mississippi. Here, elegant antebellum mansions tell stories of a bygone era, while riverside paths immerse themselves in lush, tranquil nature. Stroll through ancient plantations and discover small cafés where the soul of the South still reigns. In spring, the gardens fill with azaleas and the scent of magnolias permeates the cobblestone streets. This brief stay is an invitation to slow down, immersing yourself in intimate and unique atmospheres, perfect for those seeking a respite before the magic of the river.



## REASONS TO GO

A cruise along the **Mississippi River** is a deep dive into the heart of the American South, amidst pristine natural landscapes and cities brimming with music and tradition. From **New Orleans** to **St. Louis**, passing through **Baton Rouge**, **Memphis**, and **Natchez**, each stop is a chapter of history and culture, where jazz, blues, and soul blend with vistas of swamps, forests, and vast prairies. In spring, nature awakens with colors and scents that envelop the journey, while golden sunsets over the river become a living canvas. A cruise for those who wish to discover the most authentic South, amidst musical notes, local flavors, and tales of an America that fascinates and enchants.



REFERENCE CODE  
**ATT - USA - C 6**

# SUMMER BETWEEN WILD BEACHES AND COLONIAL CITIES ON THE ATLANTIC COAST

SEASONALITY: FROM JUNE TO AUGUST

## TRAVEL CATEGORIES

- COLONIAL HISTORY AND NATURE ENTHUSIASTS
- HONEYMOONS AND ANNIVERSARIES
- DISABLED
- SENIOR / OVER 65
- STUDENTS OF ARCHAEOLOGY, HISTORY, AND ENVIRONMENTAL SCIENCES

## PRE-CRUISE EXPERIENCE

Before setting sail for the open sea, treat yourself to a three-night stay in **Charleston, South Carolina**. This city tells the story of America's colonial history with its cobblestone streets, elegant Georgian homes, and hidden gardens. Wander off the beaten path, past small local craft markets and outdoor cafes where you can savor the authentic flavors of the South. Summers here are warm but tempered by the sea breeze, perfect for exploring uncrowded wild beaches and nature reserves, a peaceful oasis before your sea adventure.



## REASONS TO GO

Summer cruises along the South Atlantic coast of the United States are an invitation to discover a seascape rich in contrasts: from the sheltered bays of **North Carolina** to the pristine beaches of **Georgia** and **Florida**. Sailing along these coastlines means encountering ports steeped in history and culture, where each landing offers a different experience, amidst natural landscapes, secluded lighthouses, and picturesque villages. Summer offers long days of light and vivid colors, ideal for those who love immersing themselves in a blend of nature and cultural heritage, with outdoor activities, excursions, and food and wine tastings.



REFERENCE CODE  
**ATT - USA - C 7**

## **AUTUMN AMONG VINEYARDS, WATERFALLS, AND BORDER STORIES**

SEASONALITY: FROM SEPTEMBER TO NOVEMBER

### TRAVEL CATEGORIES

- WINE AND NATURE ENTHUSIASTS
- HONEYMOONS AND ANNIVERSARIES
- DISABLED
- SENIOR / OVER 65
- BIOLOGY, GEOGRAPHY, AND AMERICAN HISTORY STUDENTS

### PRE-CRUISE EXPERIENCE

Before departing on your cruise, treat yourself to a two- or three-night stay in the **Blue Ridge Mountains** region of **North Carolina**. Here, vineyards nestle against rolling hills, hidden waterfalls spill into secret gorges, and trails offer breathtaking views of forests bursting with autumn colors. Small artisan villages and farmers' markets enliven the days, while the scent of dry leaves accompanies your walks. A peaceful and authentic experience for those who wish to immerse themselves in nature and local culture before boarding.



### REASONS TO GO

Sailing along the southeast coast or along the **Tennessee River** in autumn means crossing landscapes transformed into living paintings of red, orange, and ochre. Seasonal cruises call at ports rich in tradition and folklore, among small towns where folk music tells frontier stories and local wines await. Autumn offers a cool, bright climate, ideal for those who want to discover off-the-beaten-path itineraries, amidst nature, history, and authentic culture. A journey for lovers of landscapes and profound stories, to be experienced in every detail.



REFERENCE CODE  
**ATT - USA - C 8**

# WINTER BETWEEN TRADITIONAL FESTIVALS AND FRESHWATER LANDSCAPES

SEASONALITY: FROM DECEMBER TO FEBRUARY

TRAVEL CATEGORIES

- PASSIONATE ABOUT LOCAL CULTURE AND TRADITIONS
- HONEYMOONS AND ANNIVERSARIES
- DISABLED
- SENIOR / OVER 65
- STUDENTS OF ANTHROPOLOGY, ETHNOLOGY, AND CULTURAL STUDIES

## PRE-CRUISE EXPERIENCE

Before setting sail on your river cruise, treat yourself to a two- or three-night stay in **Baton Rouge, Louisiana**. This city, with its vibrant spirit and French Colonial architecture, offers a warm and welcoming atmosphere even in winter. The streets come alive with artisan markets and traditional festivals, while restaurants offer traditional Cajun and Creole cuisine. The **Mississippi River** reflects soft lights and soft gray skies, creating the perfect backdrop to immerse yourself in the cultural roots of the South before embarking on your cruise.



## REASONS TO GO

Winter cruises along the **Mississippi** and its tributaries allow you to discover a lesser-known America, where folk traditions and local festivals intertwine with freshwater landscapes and tranquil nature. Sailing between **Baton Rouge, New Orleans, Memphis**, and beyond, each port offers cultural events, live music, and authentic flavors. Winter in the South is not only a season of quiet, but also of celebration, a perfect time for those who love to immerse themselves in local culture without the crowds of the warmer months. A journey that tells stories of community and identity rooted in America's most legendary river.

# NORTH-CENTRAL USA

**OHIO, INDIANA, ILLINOIS,  
MICHIGAN, WISCONSIN,  
MINNESOTA, IOWA, MISSOURI,  
NORTH DAKOTA, SOUTH DAKOTA,  
NEBRASKA, KANSAS**

**BETWEEN IMMENSE LAKES, PORT  
CITIES AND SLOW JOURNEYS BETWEEN  
HISTORY AND INDUSTRY**

Navigating the heart of the United States means traversing a waterway that extends far beyond the Great Lakes: a network of rivers, canals, and urban shores that tell the story of industrial history, working-class communities, and environmental resilience. From Detroit to Duluth, from Chicago to Cleveland, itineraries by sailboat, catamaran, motor yacht, and cruise offer unique glimpses of historic cities and lakeside landscapes with a melancholic yet grandiose charm. Stops on land reveal cultural workshops, revitalized post-industrial architecture, small artisan villages, and little-known natural parks. Ideal for honeymoons, anniversaries, seniors, families, students, and travelers seeking silence and remembrance, many itineraries are also accessible to people with disabilities. An invitation to rediscover the narrative power of water as a path to the deep heart of America





# OHIO – CRUISING PAST TRANQUIL ISLANDS, VERDANT SHORES, AND INDUSTRIAL HISTORY ALONG LAKE ERIE

WEEKLY ITINERARY BY SAILING, MOTORBOAT, CATAMARAN, AND MOTOR YACHT

IDEAL SEASON: FROM MAY TO OCTOBER

SUITABLE FOR:

- HONEYMOONS, ANNIVERSARIES, SLOW COUPLES
- FAMILIES
- PEOPLE WITH DISABILITIES ON EQUIPPED VESSELS (MOTORYACHTS OR CATAMARANS)
- LOVERS OF NATURE AND RELAXING LANDSCAPES
- SENIOR AND OVER 65

From the port of **Marblehead**, you set sail on the waters of **Lake Erie**, avoiding the main tourist routes to immerse yourself in a more intimate and surprising itinerary. The cruise passes secluded bays and densely wooded shores, where the silence is broken only by the sound of the waves and the song of lake birds.

The first stop is **Kelleys Island**, much less crowded than nearby Put-in-Bay. Here, you'll wander along forest trails past ancient petroglyphs carved into the rock, evidence of Native American civilization. The landscape offers quiet coves for secluded swimming and opportunities for biking among vineyards and rocky coastlines.

We continue toward the coast and stop in **Vermilion**, a historic town with a maritime charm, where colorful Victorian houses overlook calm, narrow canals. Here, small art galleries, cafes, and local restaurants allow you to immerse yourself in the traditions of authentic Ohio.

The journey culminates with a stop at the **Old Woman Creek Estuarine Reserve**, a protected and little-known area ideal for hiking, birdwatching, and relaxation. The return to **Marblehead** offers sweeping views and dramatic sunsets over the lake, capping an experience of tranquility, discovery, and natural beauty.





# INDIANA – ALONG THE SILENT SHORES OF LAKE MICHIGAN, AMONG DUNES, WOODS AND HISTORIC VILLAGES

WEEKLY ITINERARY BY SAILING, MOTORBOAT, CATAMARAN, AND MOTOR YACHT

IDEAL SEASON: FROM MAY TO EARLY OCTOBER

SUITABLE FOR:

- HONEYMOONS, ANNIVERSARIES, SLOW COUPLES
- FAMILIES
- PEOPLE WITH DISABILITIES ON EQUIPPED VESSELS (MOTORYACHTS OR CATAMARANS)
- NATURE AND LANDSCAPE PHOTOGRAPHY LOVERS
- SENIOR AND OVER 65

From the port of **Michigan City**, an itinerary begins that explores the lesser-known and most picturesque stretch of **Lake Michigan**, avoiding the touristy stretches to embrace a slow pace, filled with nature, history, and authenticity. The voyage winds through calm waters, sandy dunes, and stretches of wooded coastline that seem to have emerged from an Impressionist painting.

The first stop is at **Washington Park Lagoon**, perfect for anchoring and exploring the nearby **Old Lighthouse Museum** and the coastal trails, also ideal for those with limited mobility. An experience that combines nature, culture, and tranquility.

The journey continues along the coast towards **Indiana Dunes National Park**, a true natural paradise still little-known to international tourism. Here, you can organize excursions through shifting dunes, oak forests, and trails leading to breathtaking viewpoints over the lake. The experience is also perfect for birdwatching, thanks to the rich local fauna.

At the heart of the journey, you'll arrive in **Beverly Shores**, a small, elegant and timeless village where you'll discover historic modern buildings, remnants of the 1933 World's Fair, and a community that lives in close contact with nature. Here, you can enjoy simple yet authentic local cuisine, perhaps with a sunset view.

The return journey to **Michigan City** passes through calm waters bathed in warm hues, providing a perfect ending to an itinerary of silence, discovery, and subtle beauty.





# ILLINOIS – CRUISING SLOW-MOVING RIVERS, WILDERNESS, AND UNEXPECTED URBAN VISTAS FROM THE HEART OF THE MIDWEST

WEEKLY ITINERARY BY SAILING, MOTORBOAT, CATAMARAN, AND MOTOR YACHT

IDEAL SEASON: FROM MAY TO EARLY OCTOBER

SUITABLE FOR:

- HONEYMOONS, ANNIVERSARIES, SLOW COUPLES
- FAMILIES
- PEOPLE WITH DISABILITIES ON EQUIPPED VESSELS (MOTORYACHTS OR CATAMARANS)
- LOVERS OF PHOTOGRAPHY, BIRDWATCHING AND LIGHT TREKKING
- SENIOR AND OVER 65

From the port of **Ottawa**, along the **Illinois River**, begins a journey through the calm waters of the navigable canals and inland river parks, a landscape that blends rural charm with unspoiled urban views. Far from the tourist crowds, you travel immersed in profound tranquility, among herons, beavers, and forests reflected in the water.

The first stop is at the picturesque **Starved Rock State Park**, where you can disembark to explore canyons, waterfalls, and well-maintained trails, many of which are accessible to those with limited mobility. The park's bluffs offer breathtaking views of the river and direct contact with Illinois' most authentic nature.

We continue to **Peoria**, a riverside town combining Victorian architecture and contemporary art. Here you can visit small museums, farmers' markets, and the **Peoria Riverfront District**, full of atmosphere and photo opportunities, ideal for a quiet evening at anchor.

On the return journey east, the itinerary includes a detour through **Channahon State Park**, a tranquil area where the boat becomes the only means of discovering small lagoons, local wildlife, and waterways ideal for short kayaking excursions. The final stretch approaches **Chicago's** green suburbs, offering an unexpected view of the city's skyline from the most unusual vantage point: the water.





# MICHIGAN – AMONG CRYSTAL-CLEAR WATERS, WILD ISLANDS, AND VILLAGES SUSPENDED IN TIME ALONG LAKE HURON

## WEEKLY ITINERARY BY SAILING, MOTORBOAT, CATAMARAN, AND MOTOR YACHT

IDEAL SEASON: FROM THE END OF MAY TO MID-OCTOBER

### SUITABLE FOR:

- HONEYMOONS, ANNIVERSARIES, SLOW COUPLES
- FAMILIES
- PEOPLE WITH DISABILITIES ON EQUIPPED VESSELS (MOTORYACHTS OR CATAMARANS)
- TRAVELERS WHO ENJOY QUIET SAILING, PHOTOGRAPHY, BIRDWATCHING, HISTORY AND LOCAL TRADITIONS
- SENIOR AND OVER 65

From the port of **Cheboygan**, on the northern edge of the Lower Peninsula, you set sail across the turquoise waters of **Lake Huron**, avoiding the most crowded routes to explore quiet bays, pristine islands, and picturesque views. The journey has the slow pace of discovery, passing through coniferous forests, historic lighthouses, and small wooden piers.

The first stop is **Bois Blanc Island**, still less well-known compared to nearby Mackinac. Here, shady trails wind through pine forests and secluded beaches, ideal for a quiet picnic or a swim in the clear water, with accessible rest stops for those with limited mobility.

We continue towards **Les Cheneaux Islands**, an archipelago of over 30 islands surrounded by nature, where time stands still. The calm waters are perfect for kayaking or paddleboarding through narrow canals and tranquil lagoons, with the option of stopping ashore to visit artisan workshops and small local museums in the villages of **Cedarville** and **Hessel**.

Halfway through, you reach **Thompson's Harbor State Park**, a little-visited natural gem, free from invasive tourist facilities. The trails through dunes, sandy prairies, and woodlands offer a complete immersion in Northern Michigan's biodiversity.

The journey concludes slowly along the coast of **Thunder Bay**, with a final stop in **Alpena**, where you can explore the **Great Lakes Maritime Heritage Center**, before a final quiet evening at anchor, under a clear, star-studded sky.





## WISCONSIN – AMONG CLIFFS, LIGHTHOUSES, AND VINEYARDS ON THE MYSTERIOUS WATERS OF THE DOOR PENINSULA

### WEEKLY ITINERARY BY SAILING, MOTORBOAT, CATAMARAN, AND MOTOR YACHT

IDEAL SEASON: FROM JUNE TO EARLY OCTOBER

#### SUITABLE FOR:

- HONEYMOONS, ANNIVERSARIES, SLOW COUPLES
- FAMILIES
- PEOPLE WITH DISABILITIES ON EQUIPPED VESSELS (MOTORYACHTS OR CATAMARANS)
- GOURMET TRAVELLERS, AGRITOURISM ENTHUSIASTS, BIRDPWATCHERS, PHOTOGRAPHY ENTHUSIASTS AND LAKESIDE SILENCE LOVERS
- SENIOR AND OVER 65

From the port of **Sturgeon Bay**, set sail along the eastern shore of the **Door Peninsula**, crossing the deep blue waters of **Lake Michigan**, past rugged cliffs, secluded coves, and villages frozen in time. Here, far from the busiest tourist ports, the landscape reveals the quietest and most charming side of the Midwest.

The first stop is **Cave Point**, a stretch of coastline difficult to access by land but spectacular from the lake: dolomite cliffs sculpted by water, sea caves, and unique natural acoustics, where the sound of the waves echoes off the rocks. Here, you can descend by kayak or tender for up-close exploration or simply enjoy the view.

We continue to the quiet village of **Baileys Harbor**, stopping ashore to visit **The Ridges Sanctuary**, a protected natural area with accessible wooden boardwalks, ideal for bird watching and photography. In the evening, dinner on board features local products: artisanal cheeses, smoked trout, and peninsula wine.

Halfway through the journey, you reach **Washington Island**, one of Wisconsin's few inhabited islands. Here, a hike takes you to the lavender farm (July-August), **Schoolhouse Beach** with its white pebbles and crystal-clear waters, and small local history museums. The pace is slow, the silence profound.

Sailing along the west coast, you'll discover hidden coves like **Nicolet Bay**, perfect for a swim or a night at anchor under the stars. The last stop before returning to Sturgeon Bay is **Fish Creek**, with its small bistros, art galleries, and farmers' markets to explore at your leisure.





# MINNESOTA – ALONG THE WILD WATERWAYS OF THE NORTH BETWEEN LAKES, FORESTS AND INFINITE SILENCES

## WEEKLY ITINERARY BY SAILING, MOTORBOAT, CATAMARAN, AND MOTOR YACHT

IDEAL SEASON: FROM MID-JUNE TO THE END OF SEPTEMBER

### SUITABLE FOR:

- HONEYMOONS, ANNIVERSARIES, SLOW COUPLES
- FAMILIES WITH CURIOUS CHILDREN
- PEOPLE WITH DISABILITIES ON EQUIPPED VESSELS (MOTORYACHTS OR CATAMARANS)
- TRAVELERS SEEKING PEACE, NATURE AND SOLITUDE AND NATURE PHOTOGRAPHERS
- SENIOR AND OVER 65

From the port of **Crane Lake**, at the gateway to remote **Voyageurs National Park**, a journey begins that winds through the thousands of islands, canals, and lakes of Minnesota's northern border, where water is the only true path. Sailing here is like entering a world where nature reigns supreme: boreal forests, moose tracks along the shore, eagles soaring over the bridge, and sunsets that paint the sky gold and copper.

The route continues to **Namakan Lake**, where you can explore remote bays perfect for fishing, swimming, or simply dropping anchor and listening to the silence. Here, you can disembark for short hikes on accessible trails that pass through virgin forests and lead to spectacular views. One of the rarest experiences is the historic **Voyageurs** canoe trail, which can be undertaken with a local guide, even for those with limited mobility, thanks to access platforms.

Halfway through the journey, you reach the most fascinating heart of the park: the roadless and completely wild **Kabetogama Peninsula**. Here, a guided hike along wooden walkways and small bridges allows you to observe the local wildlife and learn about the history of the native peoples and French explorers.

The journey concludes along **Rainy Lake**, where the waters open up to wide expanses and wooded islands. You can dock at **Anderson Bay** for a picnic with a view or visit one of the old ranger cabins, renovated for educational activities and meetings with local experts.





# IOWA – A SLOW WEEK ON THE MISSISSIPPI, AMID ANCIENT RIVERS, RIVERSIDE TOWNS, AND VERDANT SILENCES

## WEEKLY ITINERARY BY SAILING, MOTORBOAT, CATAMARAN, AND MOTOR YACHT

IDEAL SEASON: FROM MAY TO EARLY OCTOBER

### SUITABLE FOR:

- HONEYMOONS, ANNIVERSARIES, SLOW COUPLES
- FAMILIES WITH CHILDREN
- PEOPLE WITH DISABILITIES ON EQUIPPED VESSELS (MOTORYACHTS OR CATAMARANS)
- LOVERS OF PHOTOGRAPHY, RIVER HISTORY AND GASTRONOMY
- SENIOR AND OVER 65

From the river port of **Dubuque**, framed by rocky cliffs and lush forests, we set out on a journey along the most scenic stretch of the **Mississippi** in Iowa, where the river flows between islands, marshes, and inlets that change with every bend. We sail slowly through gentle currents and rural landscapes, far from the beaten track, into the heart of the quietest and most authentic America.

The first stop is **Guttenberg**, a small town overlooking the river, where time seems to have stood still. Here, you can dock to explore **Lock & Dam No. 10**, watch the passing barges, and stroll along the historic riverfront. Further south, continue towards the **Upper Mississippi River National Wildlife and Fish Refuge**, where smaller boats can navigate the side canals, encountering herons, bald eagles, and deer on the banks. The trails along the **Palmer Hills** and peat bogs offer accessible walks, even for seniors and those with mild disabilities.

Halfway through the trip, we stop in **LeClaire**, home of the famous **Buffalo Bill**, where you can enjoy a craft bourbon tasting experience and visit local shops, galleries, and small nautical museums. From here, we cruise slowly toward **Muscatine**, where you can admire the sunset from the river in front of **Riverfront Park** and enjoy a meal of freshwater seafood prepared according to tradition.

The final stretch leads to **Burlington**, past sandy islands, river beaches, and green spaces where you can drop anchor for a final picnic. A hike through the **Big Hollow Recreation Area** offers a complete immersion in the tranquility, amidst ponds, forest trails, and vibrant wetlands.





# MISSOURI – SLOWLY CRUISE ALONG LEGENDARY RIVERS, ROLLING VINEYARDS, AND MIDWESTERN LANDSCAPES

WEEKLY ITINERARY BY SAILING, MOTORBOAT, CATAMARAN, AND MOTOR YACHT

IDEAL SEASON: FROM LATE APRIL TO OCTOBER

SUITABLE FOR:

- HONEYMOONS, ANNIVERSARIES, SLOW COUPLES
- FAMILIES
- PEOPLE WITH DISABILITIES ON EQUIPPED VESSELS (MOTORYACHTS OR CATAMARANS)
- FOR THOSE INTERESTED IN AMERICAN HISTORY AND RIVER CULTURE, BETWEEN WINE AND NATURE
- SENIOR AND OVER 65

From the river port of **Hermann**, nestled in the wine-growing hills of the **Missouri Valley**, begins a river journey that combines relaxed cruising, food and wine experiences, and lush nature. Far from trade routes, the boat follows the **Missouri River**, passing tranquil inlets, small islands, and charming historic villages.

The first stop is **New Haven**, where you can disembark for a visit to an old craft distillery and stroll along trails through woods and vineyards. Continuing, you'll enter the less traveled stretch of the river, entering the heart of **Katy Trail State Park**, accessible to those with limited mobility. Here, you can organize short guided hikes, scenic bike rides, or birdwatching among the limestone cliffs and open fields.

Halfway through the voyage, you'll reach **Washington**, an elegant riverside town with historic cafés, artisan shops, and a pleasant stroll along the **Riverfront Trail**. The cruise continues southwest to **St. Charles**, rich in pioneer history. Disembark to tour the colonial center, sample typical Midwestern cuisine, and learn about the **Lewis and Clark Route**.

The journey concludes by returning to **Hermann**, crossing lesser-known areas of the river, ideal for fishing, reading on the deck, or simply contemplating the sunset. A picnic in a vineyard overlooking the river concludes this experience of tradition, nature, and silence.





# NORTH DAKOTA – ALONG THE MISSOURI BETWEEN HIDDEN CANYONS, SACRED PRAIRIES AND WILDERNESS RESERVES

WEEKLY ITINERARY BY SAILING, MOTORBOAT, CATAMARAN, AND MOTOR YACHT

IDEAL SEASON: FROM MAY TO EARLY OCTOBER

SUITABLE FOR:

- HONEYMOONS, ANNIVERSARIES, SLOW COUPLES
- FAMILIES WITH TEENAGERS INTERESTED IN HISTORY AND THE OUTDOORS
- PEOPLE WITH DISABILITIES ON EQUIPPED VESSELS (MOTORYACHTS OR CATAMARANS)
- HISTORY ENTHUSIASTS OF NATIVE AMERICAN CULTURES AND THE AMERICAN FRONTIER
- SENIOR AND OVER 65

The journey begins in the quiet river port of **Williston**, in the northwest of the state, where the **Missouri River** winds through canyons, calm waters, and endless silence. We sail south along untouched stretches, past rocky cliffs, sandy islands, and a nature that seems suspended in time.

The first stop is at **Fort Buford**, where you can disembark to visit the former military outpost, now a historical museum nestled in the tranquil plains. The route continues along the Missouri River that crosses the **Fort Berthold Indian Reservation**, a culturally rich area where you can organize a guided tour in collaboration with the Hidatsa, Mandan, and Arikara Native communities. Here, cultural activities, oral histories, and crafts offer an authentic and respectful vision of the profound connection between the land and its indigenous peoples.

Continuing south, you enter **Lake Sakakawea**, one of the largest man-made lakes in the United States, where you can spend days exploring tranquil coves, fishing, swimming, and wildlife watching. The calm waters and long sunsets make this stretch ideal for relaxing, reading, or simply contemplating the horizon.

The next stop is **Crow Flies High Butte Overlook**, a scenic spot reached by a short guided boat ride, offering breathtaking views of the lake and the Badlands. The journey concludes at **Garrison Bay**, a small harbor with a rural atmosphere, where a dinner of lake fish and local produce concludes the week in true North American style.





# SOUTH DAKOTA – A WEEK ON THE MISSOURI RIVER AMID SILENT CLIFFS, ENDLESS PRAIRIES, AND THE HISTORY OF THE GREAT PLAINS

WEEKLY ITINERARY BY SAILING, MOTORBOAT, CATAMARAN, AND MOTOR YACHT

IDEAL SEASON: FROM THE END OF MAY TO THE BEGINNING OF OCTOBER

## SUITABLE FOR:

- HONEYMOONS, ANNIVERSARIES, SLOW COUPLES
- FAMILIES WITH CURIOUS CHILDREN INTERESTED IN EXPLORATION
- PEOPLE WITH DISABILITIES ON EQUIPPED VESSELS (MOTORYACHTS OR CATAMARANS)
- STUDENTS AND ENTHUSIASTS OF NATIVE CULTURE
- SENIOR AND OVER 65

The departure is from the small port of **Pickstown**, on the shores of **Lake Francis Case**, a large basin formed by the Missouri River, nestled in a landscape of wind-carved canyons and grassy hills stretching to the horizon. The navigation glides slowly between unfrequented coves and cliffs where hawks and eagles circle above the calm waters.

The first stop is ashore at the **Karl E. Mundt National Wildlife Refuge**, a little-known area and protected bald eagle habitat. Short trails and accessible observation points allow you to immerse yourself in the still-untamed wilderness. We continue to **Fort Randall**, visiting the ruins of the old fort and the dam, which offers spectacular views of the surrounding landscape.

The central leg of the journey takes you upriver to **Lake Sharpe**. Here, you can alternate relaxing days on the water with excursions to the **Iron Nation Recreation Area**, a remote and fascinating area where prairies, canyons, and forests tell the story of the region. A local guide can accompany visitors to discover traditional medicinal plants and the traces left by ancient native populations.

The journey continues to **Pierre**, the state capital, where you can dock to visit the **Cultural Heritage Center** and enjoy a prairie-style dinner, featuring local dishes inspired by Lakota and pioneer traditions.

The return to **Pickstown** crosses the calm waters of the **Missouri River** at sunset, past sandy islands and vast skies tinged with gold and pink. A slow, evocative itinerary deeply connected to the soul of the Midwest.





# NEBRASKA – NAVIGATING THE PLATTE RIVER THROUGH OPEN PRAIRIES, PIONEER HISTORY, AND WILDLIFE REFUGES

WEEKLY ITINERARY BY SAILING, MOTORBOAT, CATAMARAN, AND MOTOR YACHT

IDEAL SEASON: FROM LATE APRIL TO MID-OCTOBER

SUITABLE FOR:

- HONEYMOONS, ANNIVERSARIES, SLOW COUPLES
- FAMILIES
- PEOPLE WITH DISABILITIES ON EQUIPPED VESSELS (MOTORYACHTS OR CATAMARANS)
- FOR THOSE INTERESTED IN AMERICAN HISTORY AND PIONEER ROUTES
- SENIOR AND OVER 65

From the **Columbus River Port**, located on the banks of the **Platte River**, begins a journey exploring a unique ecosystem, where expansive prairies merge with slow-moving waters and sheltered bays. The route avoids the busiest towns, offering moments of silence and contemplation among the grassy banks and alluvial forests.

The first stop is **Platte River State Park**, a protected area where you can disembark for walks through woodlands and prairies, spotting local wildlife such as deer, eagles, and herons. Well-maintained trails and accessible picnic areas make this an ideal stop, even for those with mobility issues.

We continue to **Ash Hollow State Historical Park**, a site of great historical significance, where you'll find vestiges of the ancient pioneer routes along the **Oregon Trail**. Here, you can enjoy easy hikes and join guided tours to learn the stories of those who crossed these lands in search of a future.

The journey continues along the **Platte River** until reaching **Merritt Reservoir**, a tranquil oasis where fishing, birdwatching, and kayaking allow you to fully enjoy rural Nebraska nature, away from the crowds.

The final stop is **Scotts Bluff National Monument**, an imposing rock formation that symbolizes the American frontier. Although not directly accessible by water, you can organize a short excursion by car or bike to admire the surrounding landscape from above and understand the site's historical significance.

The return to **Columbus** offers a final sail across the placid waters of the Platte, under wide, bright skies, accompanied by the song of birds and the scent of the prairie.





# KANSAS – BETWEEN PLACID RIVERS, GOLDEN PRAIRIES AND SMALL VILLAGES WITH AUTHENTIC CHARM

## WEEKLY ITINERARY BY SAILING, MOTORBOAT, CATAMARAN, AND MOTOR YACHT

IDEAL SEASON: FROM MAY TO SEPTEMBER

### SUITABLE FOR:

- HONEYMOONS, ANNIVERSARIES, SLOW COUPLES
- FAMILIES
- PEOPLE WITH DISABILITIES ON EQUIPPED VESSELS (MOTORYACHTS OR CATAMARANS)
- TRAVELERS LOOKING FOR RELAXATION AND LOCAL CULTURE
- SENIOR AND OVER 65

From the port of **Topeka**, on the banks of the **Kansas River**, begins a journey exploring a region rich in history and nature, far from the beaten track. The voyage unfolds through calm waters and wide prairie plains, where the silence is broken only by birdsong and the rustling of the wind through the tall grasses.

The first stop is **Lake Shawnee**, a serene lake surrounded by oak forests and accessible trails, where you can hike, picnic, and birdwatch in a protected and welcoming environment. The clear waters also invite short kayak or canoe excursions.

Continuing south, you reach **Clinton Lake**, a quiet area where nature reigns supreme, with sheltered bays ideal for anchoring and contemplation. Here, you can discover traces of local wildlife and enjoy moments of total relaxation away from the crowds.

A visit to nearby **Clinton State Park** offers the opportunity to explore easy, well-maintained trails, perfect for those with mobility issues, and to take guided tours of the local flora and fauna.

The journey concludes with a sail to the picturesque village of **Lawrence**, where culture and history blend in a lively yet authentic atmosphere. Here, you can savor typical Midwestern cuisine and visit small local shops and art galleries.

The return trip along the **Kansas River** still offers glimpses of pristine nature, with the sunset painting the prairies and calm waters red.





REFERENCE CODE  
**ATT - USA - C 9**

# SPRING AMONG GREAT LAKES, PARKS AND RENOVATED INDUSTRIAL CITIES

SEASONALITY: FROM APRIL TO JUNE

TRAVEL CATEGORIES

- INDUSTRIAL HISTORY AND NATURE ENTHUSIASTS
- HONEYMOONS AND ANNIVERSARIES
- DISABLED
- SENIOR / OVER 65
- ENGINEERING, AMERICAN HISTORY, AND BIOLOGY STUDENTS

## PRE-CRUISE EXPERIENCE

Before setting sail on your Great Lakes adventure, treat yourself to a three-night stay in **Chicago, Illinois**. This vibrant metropolis, with its iconic architecture and art and science museums, offers a unique blend of culture and innovation. Stroll along the lakefront, explore off-the-beaten-path neighborhoods, and savor local cuisine in historic restaurants. In spring, the weather is mild and the city parks are filled with flowers, creating a rejuvenating atmosphere ideal for preparing for a journey filled with landscapes and history.



## REASONS TO GO

Spring cruises on the **Great Lakes** and the rivers of **North Central** are a journey through pristine nature and evolving cities, where the water reflects panoramas ranging from lush forests to modern skylines. Sailing between **Illinois, Michigan, and Wisconsin** means discovering ports that were once the hubs of American industry, now reborn with a special focus on culture and the environment. Spring brings gentle light and ideal temperatures for exploring on land and relaxing on board, on a journey that combines surprising landscapes with stories of innovation and tradition.



REFERENCE CODE  
**ATT - USA - C 10**

# SUMMER AMONG THE RIVERS, MUSEUMS, AND NATURAL PARKS OF THE MIDWEST

SEASONALITY: FROM JUNE TO AUGUST

## TRAVEL CATEGORIES

- ARCHAEOLOGY AND NATURE ENTHUSIASTS
- HONEYMOONS AND ANNIVERSARIES
- DISABLED
- SENIOR / OVER 65
- STUDENTS OF ENVIRONMENTAL SCIENCES, HISTORY AND ARCHAEOLOGY

## PRE-CRUISE EXPERIENCE

Before setting sail on your river cruise, treat yourself to a three-night stay in **Minneapolis, Minnesota**. This dynamic city is distinguished by its urban lakes, lush parks, and vibrant art scene. Explore off-the-beaten-path trails along the **Mississippi River**, visit contemporary art museums, and savor local specialties at open-air markets. Summer here offers long, bright days, perfect for immersing yourself in culture and nature, preparing for a journey full of discovery.



## REASONS TO GO

Summer cruises along the **Mississippi River** and its tributaries in the **Midwest** offer a unique experience amidst pristine river landscapes and cities rich in history and tradition. From **Minneapolis** to **St. Louis**, the route passes through nature reserves, picturesque villages, and vibrant metropolises, where art, music, and gastronomy merge. Summer brings mild temperatures and lush nature, ideal for those who enjoy combining outdoor activities with cultural visits, immersing themselves in authentic and captivating atmospheres.



REFERENCE CODE  
**ATT - USA - C 11**

# AUTUMN AMONG GOLDEN LEAVES AND HISTORIC CITIES ON THE RIVER BANKS

SEASONALITY: FROM SEPTEMBER TO NOVEMBER

## TRAVEL CATEGORIES

- PHOTOGRAPHY AND HISTORY ENTHUSIASTS
- HONEYMOONS AND ANNIVERSARIES
- DISABLED
- SENIOR / OVER 65
- STUDENTS OF GEOGRAPHY, AMERICAN HISTORY, AND ART

## PRE-CRUISE EXPERIENCE

Before departing on your cruise, treat yourself to a two- or three-night stay in **Milwaukee, Wisconsin**. This city, with its industrial and cultural heritage, offers charming views and hidden corners. Stroll along the riverfront and through the downtown streets, discover local craft markets, and savor craft beers in historic breweries. In autumn, the landscape turns red and gold, creating a warm and inviting atmosphere, ideal for recharging before your cruise.



## REASONS TO GO

Autumn cruises on the **Great Lakes** and along the rivers of **North Central** offer breathtaking scenery, with forests ablaze with vibrant colors and cities that tell stories of both past and present. Sailing between **Wisconsin, Minnesota,** and **Illinois** means discovering ports that blend tradition and modernity, where local festivals and cultural events enliven the days. Autumn brings cool temperatures and golden light, perfect for those seeking an authentic experience of nature, art, and culture.



REFERENCE CODE  
**ATT - USA - C 12**

# WINTER BETWEEN GLACIAL RIVERS AND HISTORIC CITIES UNDER THE WINTER SKY

SEASONALITY: FROM DECEMBER TO FEBRUARY

## TRAVEL CATEGORIES

- HISTORY AND LOCAL CULTURE ENTHUSIASTS
- HONEYMOONS AND ANNIVERSARIES
- DISABLED
- SENIOR / OVER 65
- STUDENTS OF HISTORY, ANTHROPOLOGY, AND ENVIRONMENTAL STUDIES

## PRE-CRUISE EXPERIENCE

Before setting sail on your river cruise, treat yourself to a two- or three-night stay in **St. Louis, Missouri**. This city offers a cozy and welcoming atmosphere even in the coldest months, with art museums, iconic architecture, and markets that brighten the winter. Stroll along the **Mississippi River**, discover small historic neighborhoods away from mass tourism, and savor traditional Midwestern dishes. A moment of tranquility and discovery before embarking on your journey across the icy waters.



## REASONS TO GO

Winter cruises along the **Mississippi** and the **Great Lakes** allow you to discover a landscape of water and cities enveloped in a unique charm, amidst soft lighting and tranquil atmospheres. Sailing this season means experiencing Central and North America in a more intimate way, with cultural events, winter festivals, and panoramas that speak to the power of nature even in the stillness of the cold. A journey designed for those who love culture and history, immersed in an evocative and intimate atmosphere, far from the beaten track.

# SOUTHWEST USA

**TEXAS, OKLAHOMA, NEW  
MEXICO, ARIZONA**

**BETWEEN SACRED RIVERS, DESERT LAKES AND  
NAVIGATIONS IN THE MYTH OF THE SOUTH**

The seemingly arid American Southwest reveals a surprising watery soul: hidden basins, sacred rivers like the Rio Grande, and artificial lakes nestled between canyons and plateaus. Sailing here means coming into contact with ancestral lands, where Native, Hispanic, and Anglo-Saxon cultures meet in a timeless setting. Among nature reserves, submerged canyons, and lakeside communities, boat itineraries—often accessible to people with disabilities—offer slow, contemplative, and deeply symbolic experiences. Ideal for seniors, honeymooners or anniversary couples, students, and curious families, these itineraries allow you to connect with the land through water, amid ancient missions, rock art, and endless skies. Each stop is an encounter with profound stories and landscapes that seem suspended between reality and legend





# TEXAS – BETWEEN QUIET BAYS, NATURE RESERVES AND AUTHENTIC VILLAGES ALONG THE GULF OF MEXICO COAST

WEEKLY ITINERARY BY SAILING, MOTORBOAT, CATAMARAN, AND MOTOR YACHT

IDEAL SEASONS: FROM MARCH TO JUNE AND FROM SEPTEMBER TO NOVEMBER

SUITABLE FOR:

- HONEYMOONS, ANNIVERSARIES, SLOW COUPLES
- FAMILIES
- PEOPLE WITH DISABILITIES ON EQUIPPED VESSELS (MOTORYACHTS OR CATAMARANS)
- TRAVELERS INTERESTED IN DISCOVERING AUTHENTIC TEXAS COASTAL CULTURE
- SENIOR AND OVER 65

From the port of **Port Aransas**, on the shores of the **Gulf of Mexico**, begin a journey that avoids the beaten tourist track to explore pristine natural environments and small villages with authentic charm. The voyage unfolds through calm waters, canals, and lagoons, where the local flora and fauna tell stories of unique and protected ecosystems.

The first stop is **Aransas National Wildlife Refuge**, a sanctuary for migratory birds and rare species such as the brown pelican and the purple heron. Here, you can disembark for guided hikes along accessible nature trails, ideal for those with limited mobility, and for unforgettable birdwatching sessions.

We continue towards **Rockport**, an uncrowded coastal town where you can enjoy fresh seafood specialties and discover local art galleries, with a relaxed and authentic atmosphere, far from mass tourism.

The sail continues to **Copano Bay**, a secluded cove perfect for quiet anchorages and nature immersions. Here, you can explore deserted sandy beaches and wetlands where you can spot wildlife such as dolphins and greater flamingos.

The return journey passes through hidden canals and inlets, offering unique views of the sunset, with the reflection of the lights on the calm waters and the gentle sound of the waves lulling you back.





# OKLAHOMA – CRUISING THROUGH TRANQUIL LAKES, FORESTS, AND SMALL TOWNS ALONG HIDDEN WATERWAYS

WEEKLY ITINERARY BY SAILING, MOTORBOAT, CATAMARAN, AND MOTOR YACHT

IDEAL SEASONS: FROM APRIL TO JUNE AND FROM SEPTEMBER TO OCTOBER

SUITABLE FOR:

- HONEYMOONS, ANNIVERSARIES, SLOW COUPLES
- FAMILIES
- PEOPLE WITH DISABILITIES ON EQUIPPED VESSELS (MOTORYACHTS OR CATAMARANS)
- TRAVELERS INTERESTED IN SMALL, AUTHENTIC VILLAGES
- SENIOR AND OVER 65

From the port of **Grand Lake o' the Cherokees**, one of Oklahoma's largest and most picturesque lakes, a route departs from the busiest routes to immerse yourself in an environment rich in flora and fauna, perfect for those seeking peace and direct contact with nature. The calm waters and numerous settlements along the shore offer a varied and fascinating scenery.

The first stop is **Monkey Island**, a quiet peninsula with quiet beaches, picnic areas, and trails surrounded by lush vegetation. Here, you can relax, kayak along the secluded shores, and observe the local birdlife in complete tranquility.

The journey continues to **Bernice**, a small village that retains the authenticity of a lakeside community, with family-run restaurants and markets where you can sample local specialties. It's the ideal place for a cultural break and to discover genuine traditions.

The voyage continues to **Big Cabin Wildlife Management Area**, a wilderness area where you can take short shore excursions to admire deer, birds, and pristine nature, far from the chaos of big cities.

The return to **Grand Lake** offers the opportunity to enjoy the sunset reflected on the water, concluding a relaxing and immersive itinerary, ideal for rediscovering the slow pace of life between water and woods.





# NEW MEXICO – BETWEEN CALM WATERS, ANCESTRAL ART AND DESERT LANDSCAPES ALONG LESSER-KNOWN ROUTES

WEEKLY ITINERARY BY SAILING, MOTORBOAT, CATAMARAN, AND MOTOR YACHT

IDEAL SEASONS: FROM MARCH TO MAY AND FROM SEPTEMBER TO NOVEMBER

SUITABLE FOR:

- HONEYMOONS, ANNIVERSARIES, SLOW COUPLES
- FAMILIES
- PEOPLE WITH DISABILITIES ON EQUIPPED VESSELS (MOTORYACHTS OR CATAMARANS)
- TRAVELERS INTERESTED IN NATURAL SPAS AND RELAXATION
- SENIOR AND OVER 65

Starting from the tranquil harbor of **Elephant Butte Lake**, New Mexico's largest man-made lake, you'll embark on a journey away from the tourist routes, discovering secluded coves, sandy beaches, and absolute tranquility. Here, the water meets the desert, creating a unique contrast of colors and atmospheres.

The first stop is **Truth or Consequences**, a spa town with natural hot springs where you can relax and immerse yourself in a rejuvenating environment, far from the hustle and bustle. It's a chance to connect with the local culture and surrounding nature.

The cruise continues to **Percha Dam State Park**, a green oasis with easy trails and picnic areas along the **Rio Grande River**, ideal for leisurely strolls and observing migratory birds, amidst canyon scenery and aspen forests.

The journey ends with a stop at **Caballo Lake State Park**, lesser-known but full of tranquil corners, where you can enjoy a spectacular sunset amid the reflection of the water and the soft shapes of the surrounding mountains.





# ARIZONA – RED WATERS, SECRET CANYONS, AND ANCIENT STORIES AMONG THE DESERT LAKES

WEEKLY ITINERARY BY SAILING, MOTORBOAT, CATAMARAN, AND MOTOR YACHT

IDEAL SEASONS: FROM APRIL TO JUNE AND FROM SEPTEMBER TO OCTOBER

## SUITABLE FOR:

- HONEYMOONS, ANNIVERSARIES, SLOW COUPLES
- FAMILIES
- PEOPLE WITH DISABILITIES ON EQUIPPED VESSELS (MOTORYACHTS OR CATAMARANS)
- PASSIONATE ABOUT NATIVE ARCHAEOLOGY AND LANDSCAPE PHOTOGRAPHY
- SENIOR AND OVER 65

From the port of **Page**, on the shores of picturesque **Lake Powell**, a week-long itinerary begins, winding through submerged canyons, red-sand beaches, and seemingly hand-sculpted rock faces. Far from the busiest areas, the route passes through quiet coves and hidden gorges where time stands still.

The first stop is **Labyrinth Canyon**, accessible only by water and perfect for exploration by kayak or raft. Its narrow, winding walls offer shade, coolness, and silence in a surreal setting.

Sailing further south, you'll reach **Dangling Rope Marina**, where you can embark on land excursions to ancient **Anasazi** sites. Here, local guides share the history of the native peoples through petroglyphs and stone paths.

The route continues to **Rainbow Bridge National Monument**, accessible via a scenic detour. This colossal natural formation is one of the largest natural bridges in the world, sacred to many Native American tribes.

The final leg of the journey takes place in calmer waters, among secret coves where you can swim or fish at sunset. In the evening, we disembark on a secluded beach for a bonfire under one of the clearest starry skies in the United States.



# WESTERN USA

**MONTANA, WYOMING, IDAHO,  
UTAH, COLORADO, NEVADA  
WASHINGTON, OREGON,  
CALIFORNIA, ALASKA, HAWAII**

**BETWEEN LIVING OCEANS, GLACIAL  
WATERS AND NAVIGATIONS BETWEEN  
INNOVATION AND NATURAL  
SACREDNESS**

The vast and breathtaking American West offers a mosaic of water itineraries that traverse ocean bays, glacial fjords, mountain lakes, and volcanic islands. Sailing here is an experience of profound connection with nature: from the whales of Alaska to the submerged craters of Hawaii, from the misty coasts of Oregon to the flooded canyons of Utah. Each stop reveals a blend of indigenous culture, extreme landscapes, and sustainable solutions. The most comfortable and accessible vessels, such as catamarans, motoryachts, and cruises, make this experience possible for honeymoons, anniversaries, families, disabled travelers, seniors, and travelers seeking comfort. The itineraries invite you to slow down, observe, and learn, blending natural wonder, ecological awareness, and cultural inspiration. A journey between ancient seas and future technologies





# MONTANA – BETWEEN GLACIAL WATERS AND TIMELESS FORESTS: A JOURNEY THROUGH THE REFLECTIONS OF BIG SKY COUNTRY

WEEKLY ITINERARY BY SAILING, MOTORBOAT, CATAMARAN, AND MOTOR YACHT

IDEAL SEASON: FROM JUNE TO SEPTEMBER

SUITABLE FOR:

- HONEYMOONS, ANNIVERSARIES, SLOW COUPLES
- FAMILIES WITH CURIOUS CHILDREN
- PEOPLE WITH DISABILITIES ON EQUIPPED VESSELS (MOTORYACHTS OR CATAMARANS)
- PHOTOGRAPHY, BIRDWATCHING, AND SMALL RURAL VILLAGE ENTHUSIASTS
- SENIOR AND OVER 65

From the tranquil harbor of **Lakeside**, overlooking the vast **Flathead Lake**, begins a journey that winds through quiet coves, uninhabited islands, and mountains reflected in the crystal-clear water. Sailing south, you'll encounter **Wild Horse Island**, a nature reserve accessible only by boat: here, among deer, eagles, and wild horses, the landscape unfolds in all its majesty.

The second stop is **Yellow Bay**, famous for its orchards and calm waters. A short shore excursion leads to small farmers' markets and honey and cherry producers, in a rural and intimate setting. The cruise continues along the eastern shore of the lake, passing small bays and uncrowded beaches, perfect for evening anchorages under a star-studded sky.

Midweek, we head north to explore the **Swan River**, accessible via a small canal. Here, we enter a more intimate river experience, amidst submerged logs, riverside trails, and dense forests. A stop in the village of **Bigfork** offers an artistic interlude, with local galleries, live folk music, and dinners featuring fresh trout.

The journey concludes with a slow ride toward the north of the lake, passing **Cedar Island** for a brief stop with a picnic and wildlife observation. The silence of the water and the profile of the Mission Mountains on the horizon accompany the return journey, in a finale suspended between nature, memory, and contemplation.





# WYOMING – BETWEEN CARVED CANYONS AND ANCESTRAL WATERS: EXPLORING THE WILD HEART OF THE WEST

WEEKLY ITINERARY BY SAILING, MOTORBOAT, CATAMARAN, AND MOTOR YACHT

IDEAL SEASON: FROM LATE JUNE TO MID-SEPTEMBER

SUITABLE FOR:

- HONEYMOONS, ANNIVERSARIES, SLOW COUPLES
- FAMILIES WITH CHILDREN WHO LOVE ADVENTURE AND WILDLIFE
- PEOPLE WITH DISABILITIES ON EQUIPPED VESSELS (MOTORYACHTS OR CATAMARANS)
- ENTHUSIASTS OF NATIVE AMERICAN CULTURE AND WESTERN HISTORY
- SENIOR AND OVER 65

From the tranquil **Signal Mountain Marina**, in the heart of **Grand Teton National Park**, a journey begins that follows the calm rhythm of **Jackson Lake's** waters. Here, the reflections of the majestic mountains are mirrored in glacial lakes that seem suspended in time. The initial navigation heads toward the western side of the lake, where secluded coves and small pebble beaches allow for the first stops in complete solitude.

On land, a stroll through **Colter Bay Village**, among native cultural centers and small artisan markets, offers an authentic glimpse into local life. We then continue toward the northern part of the lake, sailing past little-known islands and natural fjords shaped by glaciers.

Midweek, we venture into the **Snake River**, taking a river trip past rocky cliffs, gentle rapids, and landscapes straight out of a Western. A must-see stop is the village of **Moose**, where an old wooden inn welcomes travelers with rustic cuisine and pioneer tales.

The journey continues with a detour to the **Buffalo Fork River**, a more intimate and wild river, ideal for those who love silence and pristine nature. A brief stop ashore offers the opportunity for an accessible guided hike in the **National Elk Refuge**, where deer and bison roam freely amidst majestic scenery.

The final stretch of the itinerary takes you back to **Jackson Lake**, where the sunset reflects on the water and the silence is broken only by the call of eagles. A week of water, mountains, and memories, where every corner tells a story of nature and deep roots.





# IDAHO – BETWEEN ALPINE WATERS AND REMOTE CANYONS: A WEEK AMONG THE MOUNTAINS' SECRET REFLECTIONS

WEEKLY ITINERARY BY SAILING, MOTORBOAT, CATAMARAN, AND MOTOR YACHT

IDEAL SEASON: FROM THE BEGINNING OF JUNE TO THE END OF SEPTEMBER

SUITABLE FOR:

- HONEYMOONS, ANNIVERSARIES, SLOW COUPLES
- FAMILIES WITH CHILDREN CURIOUS ABOUT NATURE AND WATER
- PEOPLE WITH DISABILITIES ON EQUIPPED VESSELS (MOTORYACHTS OR CATAMARANS)
- MOUNTAIN LAKE ENTHUSIASTS, PHOTOGRAPHY AND BIRDWATCHING
- SENIOR AND OVER 65

From the quiet harbor of **Sandpoint**, on the northern shores of **Lake Pend Oreille**, begins a journey that strays from the beaten path to connect with Idaho's purest soul. The lake's deep, turquoise waters flow slowly through coniferous forests, where bald eagles and wild deer roam undisturbed.

Sailing east, you'll find secluded coves like **Fisherman Island** and **Driftwood Point**, perfect for private picnics, short shore excursions, or simply moments of contemplation. A stop in **Hope**, a tiny village nestled between the mountains, offers the opportunity to stop ashore among local markets and historic inns overlooking the water.

Midweek, we reach the **Clark Fork Delta**, a spectacular, rarely visited wetland where you can paddle a kayak through wild channels, surrounded only by pristine nature. A local guide leads visitors on a birdwatching experience among the freshwater mangroves and shallow waters of the delta.

We continue towards **Bayview**, discovering floating communities where time seems to have stood still. From here, a detour leads to nearby **Farragut State Park**, for an accessible hike through pine forests and coastal trails, also ideal for families and seniors.

The return to **Sandpoint** passes through little-known stretches of the lake, such as **Oden Bay**, where the sunset transforms the waters into a mirror of amber. The entire week becomes a tale of precious silences, pure waters, and views that speak to the heart.





# UTAH – BETWEEN WATER CANYONS AND ROCKY SILENCES: A WEEK AMONG THE RED REFLECTIONS OF GLEN CANYON

WEEKLY ITINERARY BY SAILING, MOTORBOAT, CATAMARAN, AND MOTOR YACHT

IDEAL SEASON: FROM LATE APRIL TO MID-OCTOBER

SUITABLE FOR:

- HONEYMOONS, ANNIVERSARIES, SLOW COUPLES
- FAMILIES WITH CURIOUS AND DYNAMIC CHILDREN
- PEOPLE WITH DISABILITIES ON EQUIPPED VESSELS (MOTORYACHTS OR CATAMARANS)
- PHOTOGRAPHY, KAYAKING AND GEOLOGY ENTHUSIASTS
- SENIOR AND OVER 65

From the tranquil harbor of **Bullfrog Marina**, on the northern shores of **Lake Powell**, begin a journey that veers off the beaten path to explore the lesser-explored wonders of **Glen Canyon National Recreation Area**. You'll sail between red sandstone walls mirrored in turquoise waters, where every curve of the lake reveals a new inlet, a new natural wonder.

The first stages lead to **Forgotten Canyon** and **Annie's Canyon**, narrow gorges accessible only by water, where you can anchor for short hikes or meditate in solitude among time-sculpted rocks. On land, ancient Anasazi pictographs silently tell millennia-old stories, best explored with expert local guides.

The voyage continues towards **Labyrinth Canyon**, one of the most remote and fascinating places in the entire basin, accessible only by light boats or motor yachts. Here, the silence is complete, broken only by the wind blowing through the stone walls. Nights are spent under clear, starry skies, with barbecues on board and the reflection of the Milky Way on the water.

Midweek, a stop ashore at the **Dangling Rope** area offers the opportunity to hike scenic trails and snorkel among the submerged rocks. Next, you'll reach **Halls Creek Bay**, perfect for kayaking or stand-up paddleboarding thanks to its calm waters and enclosed landscape.

The final leg of the itinerary follows a less traveled route toward **Cottonwood Canyon**, with a visit to an ancient Navajo settlement and an onboard dinner featuring local specialties. The return to **Bullfrog** is accompanied by the golden light of sunset, which ignites the canyon walls in an explosion of color.





# COLORADO – NAVIGATING CANYONS AND PLATEAUS: A WEEK IN THE LIQUID HEART OF THE ROCKIES

WEEKLY ITINERARY BY SAILING, MOTORBOAT, CATAMARAN, AND MOTOR YACHT

IDEAL SEASON: FROM MID-MAY TO LATE SEPTEMBER

SUITABLE FOR:

- HONEYMOONS, ANNIVERSARIES, SLOW COUPLES
- FAMILIES
- PEOPLE WITH DISABILITIES ON EQUIPPED VESSELS (MOTORYACHTS OR CATAMARANS)
- SOFT ADVENTURE ENTHUSIASTS, MOUNTAIN LOVERS
- SENIOR AND OVER 65

From the small harbor of **Blue Mesa Reservoir**, Colorado's largest man-made lake, an off-the-beaten-path itinerary begins, where water cuts through rocks and nature expresses itself in wild and silent forms. The route heads west, through little-explored inlets and steep banks, where hawks and deer roam undisturbed.

The first stop leads to the **Iola Basin** area, perfect for anchoring and short shore excursions through alpine meadows and ancient rock formations. A picnic of local produce, immersed in the silence of the landscape, provides a taste of the intimacy this lake has to offer.

Sailing toward **Cebolla Basin**, you enter a narrower and more spectacular world: narrow red canyons, sheer cliffs, and deep waters ideal for kayaking and stand-up paddleboarding. A boat stop allows you to explore the **Soap Creek** area on foot, with its rarely used trails and mountain blooms.

Midweek, we reach the southern tip of the lake, heading towards **Lake Fork Arm**, where we can visit a small farming community and participate in a mountain cooking workshop on a farm nestled among poplar trees. Here, we meet the locals and listen to pioneer stories, in an atmosphere that blends tradition and hospitality.

Towards the end of the journey, you slowly ascend the northern basin, stopping at hidden coves to swim or fish, and reach **Elk Creek Marina**, where a small rural market offers honey, bread, preserves and local crafts.

The return journey skirts the **Curecanti National Recreation Area**, offering spectacular views of the Rockies and the option of a short guided hike on the **Dillon Pinnacles Trail**, amidst lunar landscapes and views of the entire lake. The sunset, which here explodes in shades of orange and pink over the mountains, marks the conclusion of a surprising, intimate journey filled with authentic encounters.





# NEVADA – BETWEEN WATER AND DESERT: A SILENT EXPLORATION OF LAKE MEAD AND ITS GEOLOGICAL WONDERS

WEEKLY ITINERARY BY SAILING, MOTORBOAT, CATAMARAN, AND MOTOR YACHT

IDEAL SEASONS: FROM MID-MARCH TO MID-MAY AND FROM LATE SEPTEMBER TO EARLY NOVEMBER

SUITABLE FOR:

- HONEYMOONS, ANNIVERSARIES, SLOW COUPLES
- FAMILIES WITH CHILDREN ACCUSTOMED TO THE OUTDOORS
- PEOPLE WITH DISABILITIES ON EQUIPPED VESSELS (MOTORYACHTS OR CATAMARANS)
- DESERT, GEOLOGY, NATIVE CULTURE AND PHOTOGRAPHY LOVERS
- SENIOR AND OVER 65

The journey begins from **Hemenway Harbor**, on the western shore of **Lake Mead**, where the vastness of the water contrasts with the arid and majestic landscape of the **Mojave Desert**. We set sail along unfrequented routes to the less traveled area of the lake, where submerged canyons, rocky islands, and secluded bays await in silence.

The first stop takes you to **Boulder Basin**, a protected and tranquil area ideal for a refreshing first dip or a kayak excursion among the red walls of the side canyons. In the afternoon, we stop ashore at the **Railroad Tunnel Trail**, an accessible and scenic path carved into the rocks, from which you can gaze down upon the lake and sense its full expanse.

We continue to **Swallow Bay**, a sheltered cove where you can spend the night at anchor, under starry skies free of light pollution. Here, a local nature guide organizes a constellation observation session, accompanied by an introduction to the native Paiute culture.

Midweek, we reach **Gregg Basin**, the most remote and wild area of the lake, accessible only by water. Its pale sand beaches and bizarre rock formations offer the perfect setting for moments of total relaxation or short hikes. A visit to the nearby **Arizona Hot Spring**, accessible via a trail through the gorges, offers a rejuvenating experience in the natural thermal pools.

The sail continues to the little-known island of **Sandy Cove**, surrounded by clear waters ideal for snorkeling, paddleboarding, and diving. A lunch prepared on board with local ingredients is planned, followed by an afternoon at leisure for individual activities.

The journey ends along the northern side of the lake, passing **Temple Bar**, a more popular area but still less crowded during the week. The final stop: a private guided tour inside the imposing **Hoover Dam**, seen from below by water and then on land, to understand the human ingenuity embedded in the rock.

The return to **Hemenway** is slow and scenic, with a final stop for sunset among the calm waters and the sculpted profiles of the desert, in an atmosphere suspended between earth and sky.





# WASHINGTON – SAILING THE SAN JUAN ISLANDS: NATURE, SEASIDE VILLAGES, AND THE SILENCE OF THE PACIFIC OCEAN

## WEEKLY ITINERARY BY SAILING, MOTORBOAT, CATAMARAN, AND MOTOR YACHT

IDEAL SEASON: FROM MAY TO SEPTEMBER

### SUITABLE FOR:

- HONEYMOONS, ANNIVERSARIES, SLOW COUPLES
- FAMILIES
- PEOPLE WITH DISABILITIES ON EQUIPPED VESSELS (MOTORYACHTS OR CATAMARANS)
- PASSIONATE ABOUT PHOTOGRAPHY, ORCA WATCHING, BIRD WATCHING, AND LOCAL CRAFTS
- SENIOR AND OVER 65

From the tranquil port of **Anacortes**, a journey begins that winds through the **San Juan Islands**, an archipelago nestled between turquoise waters, misty forests, and ever-changing skies. Far from the beaten tourist track, we set sail for **Shaw Island**, the least developed and quietest of the group, where a secluded cove allows you to drop anchor and go ashore for a hike through wooded trails and small community gardens.

The voyage continues to **Orcas Island**, the largest and most mountainous in the archipelago. A stop at **Moran State Park** allows you to reach **Mount Constitution**, offering breathtaking views of the entire region. For those seeking experiences on land, a glassblowing workshop in the town of **Eastsound** opens its doors to curious visitors.

Midweek, we arrive at **Lopez Island**, perfect for exploring by bike (bikes are also available for rent for those with limited mobility). Its quiet roads lead to deserted beaches and farmers' markets where you can meet locals and sample cheeses, honey, and artisanal cider.

Navigating through the tranquil channels, you reach the fascinating **Stuart Island**, accessible only by sea and virtually devoid of infrastructure. Here, you walk among solitary lighthouses, silent forests, and scenic overlooks where you can spot whales, otters, and sea eagles.

The journey concludes on **San Juan Island**, where the town of **Friday Harbor** offers a relaxed and authentic atmosphere, with art galleries, small bookstores, and a final dinner featuring freshly caught seafood. The return to **Anacortes** takes place through quiet passages between cliffs and pine forests, with a stop at **James Island**, a little-known destination ideal for a final dip or a stroll among rocks and moss.





# OREGON – BETWEEN ESTUARIES, DUNES, AND QUIET VILLAGES: A SLOW ROUTE ALONG THE PACIFIC COAST

WEEKLY ITINERARY BY SAILING, MOTORBOAT, CATAMARAN, AND MOTOR YACHT

IDEAL SEASON: FROM JUNE TO SEPTEMBER

SUITABLE FOR:

- HONEYMOONS, ANNIVERSARIES, SLOW COUPLES
- FAMILIES WITH CURIOUS CHILDREN
- PEOPLE WITH DISABILITIES ON EQUIPPED VESSELS (MOTORYACHTS OR CATAMARANS)
- NATURE PHOTOGRAPHY ENTHUSIASTS, GENTLE HIKERS, AND COASTAL HISTORY AND CULTURE ENTHUSIASTS
- SENIOR AND OVER 65

From the river port of **Coos Bay**, a journey begins, avoiding busy routes and entering tranquil estuaries, coastal forests, and wind-shaped dunes. We begin by sailing toward the protected area of **South Slough Reserve**, a paradise for birdwatchers and guided hikes on wooden boardwalks surrounded by ferns and glassworts. The atmosphere is quiet, perfect for a contemplative and immersive start.

Continuing toward **Bandon**, you'll arrive in a seaside village with art galleries, artisanal chocolate shops, and a historic lighthouse overlooking the mouth of the **Coquille River**. A brief stop ashore allows you to stroll among the sea-sculpted rock formations and dine on freshly caught Dungeness crab.

Midweek, we head inland, up the **Umpqua River** to the almost time-forgotten town of **Scottsburg**. Here, you'll experience true rural Oregon, amid old wooden piers, farmers' markets, and silence broken only by the rustling of trees and the song of waterfowl.

The route then continues to **Winchester Bay**, for a hike among the **Oregon Dunes**, the tallest dunes in America, accessible with local guides specializing in sustainable hiking. For those seeking unique experiences, there's an ocean jade workshop, with demonstrations and small souvenirs to take home.

The journey slowly concludes, returning to **Coos Bay** along wild stretches of the **Cape Arago Highway**, with the option of a final stop at **Sunset Bay**, ideal for a dip among volcanic cliffs and calm waters. It is also perfect for seniors and those with disabilities thanks to the presence of accessible walkways and services.





# CALIFORNIA – BETWEEN WILD ISLANDS, SEASIDE VINEYARDS AND SILENT PORTS: A SLOW JOURNEY ALONG THE PACIFIC COAST

WEEKLY ITINERARY BY SAILING, MOTORBOAT, CATAMARAN, AND MOTOR YACHT

IDEAL SEASON: FROM JUNE TO SEPTEMBER

SUITABLE FOR:

- HONEYMOONS, ANNIVERSARIES, SLOW COUPLES
- PEOPLE WITH DISABILITIES ON EQUIPPED VESSELS (MOTORYACHTS OR CATAMARANS)
- WINE AND LOCAL FOOD ENTHUSIASTS
- STUDENTS AND EDUCATIONAL GROUPS INTERESTED IN MARINE BIODIVERSITY
- SENIOR AND OVER 65

The departure is from **Morro Bay**, a picturesque little harbor at the foot of the famous **Morro Rock**. From here, the voyage sets sail, avoiding the more popular destinations, gliding along stretches of pristine coastline where sheer cliffs, redwood forests, and the **Pacific** waves create a majestic and solitary landscape.

The first stop is at **Avila Beach**, but not in the tourist area: we stop in a small secondary bay accessible only by sea, where you can swim, snorkel among the giant seaweed, and take a guided walk through the vineyards on the hills behind, with an oceanfront organic wine tasting.

We continue to **Santa Cruz Island**, part of the **Channel Islands National Park**, accessible only by boat. Here, we immerse ourselves in a fragile and protected ecosystem: shore excursions through canyons and sea caves, kayaking along the rugged coastline, and moments of absolute silence where time seems to stand still.

Midweek, we arrive in the seaside village of **Los Osos**, a quiet and creative community largely untouched by tourism. A ceramics workshop hosts visitors for a hands-on experience working with local clay, while fresh oysters are served by candlelight for dinner.

The return journey takes place slowly along inaccessible stretches of coastline, with a final stop at **Point Buchon Trail**, for a short hike among volcanic cliffs and flower-filled meadows overlooking the Pacific. The journey concludes with a swim in the calm waters of **Spooner's Cove**, perfect for those seeking a final moment of connection with nature.





# ALASKA – BETWEEN MAJESTIC GLACIERS AND SILENT BAYS: AN AUTHENTIC JOURNEY TO DISCOVER THE WILD NATURE OF THE NORTH

WEEKLY ITINERARY BY SAILING, MOTORBOAT, CATAMARAN, AND MOTOR YACHT

IDEAL SEASON: FROM JUNE TO SEPTEMBER

SUITABLE FOR:

- HONEYMOONS, ANNIVERSARIES, SLOW COUPLES
- FAMILIES
- PEOPLE WITH DISABILITIES ON EQUIPPED VESSELS (MOTORYACHTS OR CATAMARANS)
- TRAVELERS INTERESTED IN CULTURE, NATIVE TRADITIONS AND NATURE PHOTOGRAPHY
- SENIOR AND OVER 65

Departure is from **Seward Harbor**, nestled between towering mountains and crystal-clear waters. The voyage takes place far from the beaten tourist track, through deep fjords and secluded bays, where nature reveals itself in all its primeval and unspoiled power.

The first stop is **Holgate Arm Bay**, a remote spot where you can observe colonies of seals, sea otters, and bald eagles up close, accompanied by the silence broken only by the rushing water. Here, a short shore excursion allows you to explore trails through forests of spruce and ancient mosses, with breathtaking views of the nearby glaciers.

Continuing north, you reach the tranquil **Hinchinbrook Island**, a natural refuge where biodiversity reigns supreme. Here, kayaking excursions and guided birdwatching offer the opportunity to connect with local wildlife without disturbing the fragile balance of the ecosystem.

At the heart of the journey, sailing between the majestic ice walls of **Tracy Arm Fjord** offers moments of awe and contemplation: floating icebergs, thundering waterfalls and the chance to spot gray whales and orcas in their natural habitat.

The final stop is the village of **Haines**, where **Tlingit** culture manifests itself in crafts, stories, and traditions passed down through generations. A visit to a woodcarving workshop offers an authentic sensory and cultural experience, immersed in the history of these extreme lands.

The return to **Seward** takes place with a slow navigation along the coast, accompanied by the song of eagles and the sight of mountains reflected in the calm waters, concluding an itinerary characterized by tranquility, discovery and respect for a wild and precious nature.





# HAWAII – SAILING BETWEEN HIDDEN BAYS AND MAJESTIC VOLCANOES: AN AUTHENTIC ADVENTURE BETWEEN NATURE AND POLYNESIAN CULTURE

WEEKLY ITINERARY BY SAILING, MOTORBOAT, CATAMARAN, AND MOTOR YACHT

IDEAL SEASON: FROM APRIL TO OCTOBER

SUITABLE FOR:

- HONEYMOONS, ANNIVERSARIES, SLOW COUPLES
- FAMILIES
- PEOPLE WITH DISABILITIES ON EQUIPPED VESSELS (MOTORYACHTS OR CATAMARANS)
- TRAVELERS INTERESTED IN TRADITIONAL HAWAIIAN CULTURE
- SENIOR AND OVER 65

Departing from the port of **Kailua-Kona** on the **Big Island of Hawaii**, where the turquoise waters and views of active volcanoes create a unique and wild atmosphere, the cruise avoids the most popular routes to explore secluded coves and lava cliffs shaped by time, immersing yourself in the natural power of the archipelago.

The first stop is **Kealahou Bay**, a sacred site steeped in history, where you can snorkel among vibrant coral reefs and spot dolphins playing near the shore. On land, a short hike along historic trails leads to ancient places of worship and breathtaking ocean views.

We continue towards the island of **Maui**, with a stop at **Makena Cove**, a wild beach ideal for relaxing away from the crowds, followed by a guided trek in **Haleakalā National Park**, where the lunar landscape of craters and eucalyptus forests offer a mystical and regenerating experience.

Sailing to **Moloka'i**, the itinerary offers the opportunity to discover secluded coves and ancient Hawaiian villages, encountering local communities who keep fishing and artisanal traditions alive. Here, you can experience moments of profound connection with Polynesian culture.

The final stop is the coast of **O'ahu**, away from the crowded beaches, where lush nature blends with ancient temples and hidden tropical gardens, offering an intimate and evocative conclusion to the journey.

The return to **Kailua-Kona** takes place with a slow navigation between islets and black and white sand beaches, in an atmosphere of peace and contemplation that concludes an itinerary dedicated to the profound discovery of authentic Hawaii.





REFERENCE CODE  
**ATT - USA - C 13**

# SPRING AMONG VINEYARDS, CANYONS AND STORIES OF THE WEST ALONG THE GREAT RIVERS

SEASONALITY: FROM APRIL TO JUNE

TRAVEL CATEGORIES

- PASSIONATE ABOUT GEOGRAPHY, LANDSCAPE, AND AMERICAN HISTORY
- HONEYMOONS AND ANNIVERSARIES
- DISABLED
- SENIOR / OVER 65
- STUDENTS OF GEOLOGY, ECOLOGY, AND HISTORY OF THE WILD WEST

## PRE-CRUISE EXPERIENCE

Before setting sail along the Columbia River, treat yourself to a three-night stay in **Portland, Oregon**. A green and unconventional city with a vibrant yet intimate cultural scene, it invites you to discover creative neighborhoods, historic bookstores, and sustainable restaurants. Outside the city, early spring transforms the **Columbia River Gorge** into a natural spectacle: waterfalls, flower-lined trails, and ancient volcanic formations tell the story of a profound and powerful America. A slow and rejuvenating time, ideal for immersing yourself in the atmosphere of the great rivers of the Northwest.



## REASONS TO GO

Sailing along the **Columbia** and **Snake River** in spring means immersing yourself in a landscape sculpted by time and legend. The ships follow the pioneers' routes, passing through spectacular gorges, silent plateaus, and riverside towns steeped in the myth of the Wild West. The days are clear, the vineyards are awakening, and the woods along the banks are covered in tender green. It's a journey for those seeking authenticity and natural beauty, amid canyons, locks, dams, and explorers' tales. Each stop reveals little-known stories, far from the mainstream tourist circuits, in a setting both intimate and grandiose.



REFERENCE CODE  
**ATT - USA - C 14**

# SUMMER AMONG GLACIERS, WHALES, AND VILLAGES AT THE EDGE OF THE WORLD

SEASONALITY: FROM JUNE TO AUGUST

## TRAVEL CATEGORIES

- EXTREME GEOGRAPHY AND NATURE PHOTOGRAPHY ENTHUSIASTS
- HONEYMOONS AND ANNIVERSARIES
- DISABLED
- SENIOR / OVER 65
- STUDENTS OF MARINE BIOLOGY, GLACIOLOGY, AND ENVIRONMENTAL SCIENCES

## PRE-CRUISE EXPERIENCE

Before setting sail for the icy North, spend three nights in **Seattle, Washington**. With its historic cafes, seaside markets, and independent art galleries, this city offers an authentic glimpse of the Pacific Northwest. Get off the beaten path with a trip to the **Puget Islands**, where forests meet the sea and orcas swim freely. Or hike the trails of **Mount Rainier**, amid glaciers and deep blue skies. It's the perfect place to get into the slow rhythm of the North before your departure.



## REASONS TO GO

Summer cruises to **Alaska** are a powerful, visual, and sensory experience. You sail through deep fjords, snow-capped mountains, and roaring glaciers. The long, bright days allow you to observe whales, eagles, seals, and coastal villages that seem to have emerged from an adventure novel. Every landing tells a story: Inuit fishermen, ancient mines, rainforests, and infinite silences. It's a journey for those who want to feel small before the grandeur of nature, far from crowded destinations, in a dimension where the Earth still reigns supreme.



REFERENCE CODE  
**ATT - USA - C 15**

## **AUTUMN AMONG CLIFFS, VINEYARDS, AND PACIFIC BORDER TOWNS**

**SEASONALITY: FROM SEPTEMBER TO NOVEMBER**

**TRAVEL CATEGORIES**

- **WINE, PHOTOGRAPHY, AND COASTAL CULTURE ENTHUSIASTS**
- **HONEYMOONS AND ANNIVERSARIES**
- **DISABLED**
- **SENIOR / OVER 65**
- **STUDENTS OF OENOLOGY, URBAN HISTORY, AND SUSTAINABLE TOURISM**

### **PRE-CRUISE EXPERIENCE**

Before setting sail along the West Coast, treat yourself to a three-night stay in **San Francisco**. In autumn, the city experiences its "Indian Summer": clear skies, golden light, and surprisingly mild weather. Explore lesser-known neighborhoods like **Noe Valley** or **Inner Richmond**, or lose yourself in the vineyards of nearby **Sonoma**, where the harvest colors the hills red and gold. It's a vibrant and authentic season, perfect for slowing down and savoring before beginning your ocean voyage.



### **REASONS TO GO**

Autumn cruises along the Pacific Coast reveal a different America: less frenetic, more contemplative. Sailing between **California, Oregon, and Washington**, you'll visit ports suspended between ocean and mountains, creative cities and seaside villages. This season, the coast alights with warm colors, the waves grow stronger, and the air is crisp. It's a journey for those seeking a balance between nature and culture, including wine tastings, farmers' markets, windswept cliffs, and deep sunsets. A refined and surprising way to experience autumn on the Pacific.



REFERENCE CODE  
**ATT - USA - C 16**

## **WINTER AMONG VOLCANOES, WATERFALLS, AND THE SLOW RHYTHMS OF THE HAWAIIAN ISLANDS**

**SEASONALITY: FROM DECEMBER TO FEBRUARY**

### **TRAVEL CATEGORIES**

- **PASSIONATE ABOUT VOLCANOLOGY, OCEAN CULTURE, AND TROPICAL LANDSCAPES**
- **HONEYMOONS AND ANNIVERSARIES**
- **DISABLED**
- **SENIOR / OVER 65**
- **GEOLOGY, ETHNOGRAPHY, AND ENVIRONMENTAL SCIENCE STUDENTS**

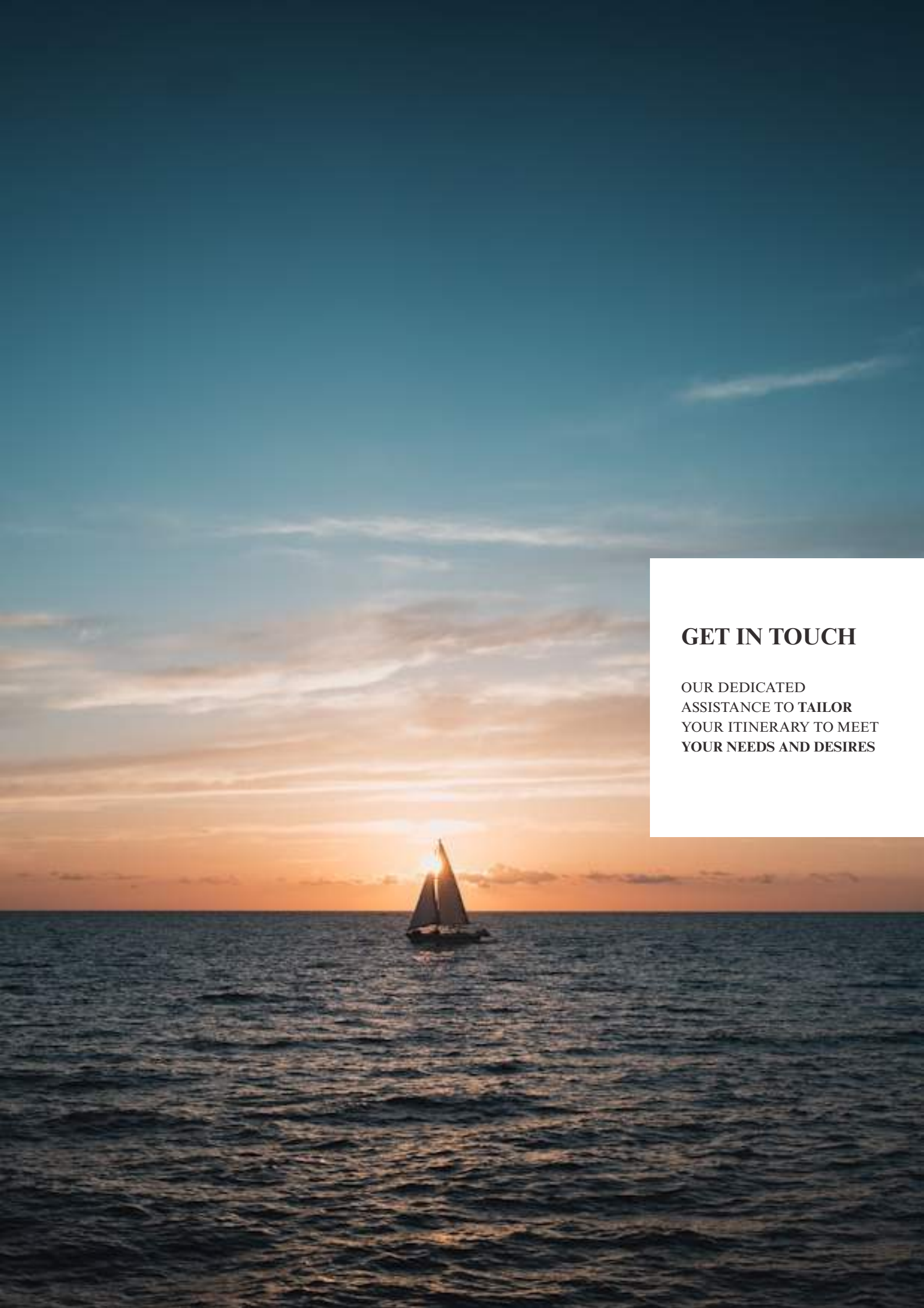
### **PRE-CRUISE EXPERIENCE**

Before setting sail among the islands, take three nights to explore **O'ahu**, based in **Honolulu**. Beyond the most famous beaches, this island hides tropical gardens, hidden temples, mountain trails, and small villages on the north shore. In winter, the waves are spectacular, the vegetation lush, and the air is scented with light rain and nighttime flowers. Far from the hectic tourist crowds, you can experience a slow, spiritual time, immersed in native culture and the silence of the ocean.



### **REASONS TO GO**

Winter island-hopping cruises in **Hawaii** are a journey through diverse worlds: tropical jungles, lunar craters, turquoise bays, and villages telling ancient stories. Each island has its own soul—the strength of the **Big Island**, the grace of **Maui**, the spirituality of **Kaua'i**. On board, you slowly sail between the islands, experiencing intense excursions, local markets, traditional dances, and encounters with powerful nature. Winter here is a season of regeneration: the ocean is alive, the light soft, and every day brings with it the ancestral rhythm of the Pacific.



## **GET IN TOUCH**

**OUR DEDICATED  
ASSISTANCE TO TAILOR  
YOUR ITINERARY TO MEET  
YOUR NEEDS AND DESIRES**

# SUPPORT INQUIRY



HONEYMOONS

FORM



ANNIVERSARIES

FORM



DISABLED INDIVIDUALS  
AND GROUPS

FORM



SENIORS INDIVIDUALS  
AND GROUPS

FORM



STUDENTS INDIVIDUALS  
AND GROUPS

FORM



INDIVIDUALS, COUPLES,  
FAMILIES, GROUPS

ATLANTIC CLASSIC BASIC

ATLANTIC TRAVELERS CLUB

## STEPS TO JOIN

- IF YOU FALL INTO THE CATEGORY OF **SPECIAL TRAVELERS (HONEYMOONS, ANNIVERSARIES, DISABLED, SENIORS, STUDENTS)** PLEASE DO NOT HESITATE TO CLICK THE APPROPRIATE BUTTON, COMPLETE THE FORM, AND SUBMIT IT. YOU WILL RECEIVE ACCESS TO ENTIRELY **COMPLIMENTARY** SUPPORT.
- ON THE CONTRARY, IF YOU ARE **SINGLE, A COUPLE, A FAMILY, OR A GROUP** SEEKING ASSISTANCE, WE ENCOURAGE YOU TO **SELECT ONE OF THE TWO PAID OPTIONS: "ATLANTIC CLASSIC BASIC" OR "ATLANTIC TRAVELERS CLUB."**



## ATLANTIC CLASSIC BASIC

It does not include any type of club or related benefits but only the classic tailor-made travel itinerary and quotation preparation service. In this case, to receive the above, you will have to proceed following the instructions indicated in the sub-heading "Steps to Follow".

### QUOTATION FEE

- For US based customers \$15.00
- For UK based customers £15.00
- For EU based customers €15.00
- For Canada based customers Can\$ 25.00
- For Australia based customers AU\$ 28.00

If, after you have received our itinerary and tailor-made quotation, you decide not to proceed with the booking, the quotation fee is non-refundable but we will do everything possible to help you find the best travel solution.

## STEPS TO FOLLOW

1) If you need to request a travel itinerary and quotation, click on the button below. Fill out and submit the relevant form.

[REQUEST A QUOTE](#)

2) Click on the image relating to your country of residence and you will be able to finalize the process of paying for the quote by credit/debit card via PayPal by following the various steps that will be indicated.



3) In a short time, you will receive your travel itinerary and quotation from one of the partner agencies, Atlantic Travel & Tours Booking Point Agency, located in the country where you live, to which you can also ask to modify / adjust your travel itinerary.



## ATLANTIC TRAVELERS CLUB

A club open to all but mainly frequent travellers that opens the doors to the following benefits:

- Request unlimited itineraries and quotes without paying the Atlantic Classic Basic quote fee every time
- 20% discount always active for all inclusive travel
- Assistance before / during / after the travel
- Constant updates concerning the travel industry
- Discounts and gifts based on availability

### MONTHLY MEMBERSHIP FEE

- For US based customers \$9.00
- For UK based customers £9.00
- For EU based customers €9.00
- For Canada based customers Can\$ 16.00
- For Australia based customers AU\$ 17.00

To join our Atlantic Travellers Club, follow the instructions indicated in the sub-heading "Steps to Follow".

You can cancel your membership at any time by writing to us by email.

## STEPS TO FOLLOW

1) Click on this button and you will be able to access membership form to fill in and send.

MEMBERSHIP


2) Click on the image relating to your country of residence and you will be able to finalize the payment process of the monthly membership fee by credit/debit card via PayPal by following the various steps that will be indicated.



3) In a short time, you will receive welcome confirmation and you will be able to start enjoying the benefits described above.

4) Remember that you can request itineraries and quotes at any time by clicking on the button below. Fill out and submit the relevant form.

REQUEST A QUOTE



# Atlantic Travel & Tours Ltd

London, New York  
Los Angeles, Miami  
Denver

## **ATLANTIC TRAVEL & TOURS LTD**

**HEADQUARTERED IN THE UNITED STATES AND THE UNITED KINGDOM**

### **REGISTERED COMPANIES**

USA - DENVER - COLORADO - COMPANY REGISTRATION NUMBER: 202 110 96 014

UK - LONDON - COMPANY REGISTRATION NUMBER: 130 288 33

### **E-MAIL**

USA - [unitedstatesadministration@atlantictourstravel.com](mailto:unitedstatesadministration@atlantictourstravel.com)

UK - [unitedkingdomadministration@atlantictourstravel.com](mailto:unitedkingdomadministration@atlantictourstravel.com)

### **WEBSITE**

[www.visitatlantictraveltours.com](http://www.visitatlantictraveltours.com)

### **FULL CONTACT DETAILS**

[www.visitatlantictraveltours.com/contact](http://www.visitatlantictraveltours.com/contact)