

ATLANTIC TRAVEL & TOURS

BUSINESS TRAVEL

INSPIRATIONAL BROCHURE



AUSTRALIA

WWW.VISITATLANTICTRAVELTOURS.COM

FROM THE CEO

Dear travelers,

We are thrilled to introduce Atlantic Travel & Tours, a tour operator specializing in tailor-made MICE travel to Australia. Our mission is to transform every corporate event, incentive, conference, and meeting into a memorable experience, combining **professionalism, creativity, and attention to detail**.

Thanks to our **many years of experience**, we collaborate with a select network of suppliers—prestigious hotels, state-of-the-art conference centers, reliable transportation companies, and charming accommodations—to offer **flawless logistics solutions tailored to your needs**. Whether you're planning an intercontinental summit, a roadshow, a product launch, or a team building program, our team can manage **every** aspect: from **planning** to **execution**, from **transportation** to **entertainment**, always keeping an eye on your **budget** and business **objectives**.

Choosing Atlantic Travel & Tours means accessing a strategic partner that puts **your satisfaction first**. Our quality of work is driven by **precision, flexibility**, and a **passion** for hospitality. We will be by your side through every phase of the project: **initial brainstorming, logistics, on-site support, final follow-up, and results analysis**.

We look forward to working together to create unique and effective MICE trips. We remain at your complete disposal for an initial meeting, either virtual or in person, to plan your next success together.



Steve Tabacchi

DR. STEVE TABACCHI
CEO - FOUNDER
ATLANTIC TRAVEL & TOURS

WHY GO TO AUSTRALIA FOR MICE

BETWEEN PRIMORDIAL NATURE, CREATIVE INNOVATION AND BORDERLESS SPACES

Australia is a MICE destination where the imagination soars. A land of spectacular contrasts and a profoundly inclusive culture, this island continent blends the power of wild nature with the urban vibrancy of cutting-edge cities like Sydney, Melbourne, and Brisbane. Here, corporate events transform into immersive experiences thanks to settings ranging from coral reefs to fiery red plateaus, from UNESCO World Heritage rainforests to endless beaches inhabited by surfers and marsupials. But it's in the details that Australia amazes: the meticulous hospitality, the attention to well-being, the profound connection with Aboriginal cultures. A MICE trip here is much more than a program: it's a catalyst for ideas, connections, and revitalized visions.

INCENTIVES AND TEAM BUILDING BETWEEN THE OUTBACK, THE CITY, AND THE BARRIER REEF

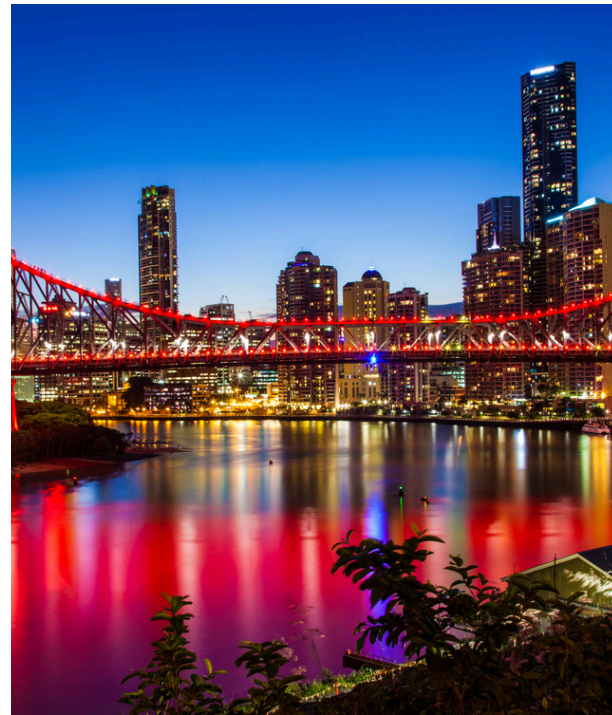
In Australia, incentives take the form of grand contemporary adventures. You can fly in a hot air balloon at dawn over the Northern Territory hinterland, snorkel among fluorescent coral, participate in creative workshops in design lodges immersed in nature, or enjoy immersive experiences with Aboriginal community elders. In Sydney, you can scale iconic bridges to challenge your limits in a group; in Melbourne, plan design thinking activities in art districts; on Kangaroo Island, find inspiration in the silence of the dunes and eucalyptus trees. Every experience, even the most exclusive, remains accessible, authentic, and deeply connected to the local area.

ICONIC DESTINATIONS, ELEVATING ATMOSPHERES

- **Sydney:** the beating heart of the country, perfect for international **events** between opera houses, rooftops overlooking the bay and cutting-edge tech venues.
- **Melbourne:** creative capital, offering spaces for **workshops** and urban **retreats** in industrial-chic settings, galleries and botanical gardens.
- **Queensland & Great Barrier Reef:** for marine wildlife programs, catamaran excursions, diving, and **team building** sessions on the coral reef.
- **Tasmania:** an island sanctuary for slow-paced **events** focused on wellness and sustainability, amid vineyards, mountains, and contemporary art.
- **Uluru & the Red Centre:** Australia's spiritual heart, ideal for transformative **encounters** amid ancestral deserts and Aboriginal culture.
- **Western Australia & Ningaloo Reef:** an alternative to the East Coast, with pristine experiences among coral reefs and spectacular canyons.
- **South Australia & Kangaroo Island:** perfect for small groups, board **meetings** in eco-lodges, and regenerating moments immersed in nature.

ACCESSIBILITY AND EXCELLENT SERVICES FOR MICE

Australia is well connected to major international hubs via direct flights from Europe, Asia, and the Americas, with modern airports in Sydney, Melbourne, Brisbane, and Perth. Qantas, the national airline, is recognized for its excellent premium service: its Business Class offers fully flat-bed seats, gourmet dining inspired by Australian cuisine, access to exclusive lounges, fast track, and personalized assistance. Virgin Australia also represents a premium option for domestic and regional business travel, offering a comfortable Business Class with catering by Australian chefs, select onboard Wi-Fi, priority check-in, tailored group management, and access to Virgin Lounges at major airports. On the ground, event support is impeccable: specialized operators, private transfers, and seamless logistics even in the most remote areas thanks to frequent domestic flights and scenic rail connections such as The Ghan and Indian Pacific. Throughout Australia, efficient service, quality hospitality, and technology applied to business tourism allow for the organization of complex and memorable events in any context, from major cities to the most remote islands.





CHARTER FLIGHTS

REASONS TO USE THEM

Charter flights are private or semi-private flights rented specifically for specific needs, such as business trips, corporate events, or group transportation. They are widely used by companies seeking flexibility, time savings, and comfort.

- Flexibility to decide on times and airports (even the less busy ones)
- Save time: No queues, long checks and waits at commercial airports
- Privacy and comfort: Perfect for working or meeting on board
- Access to secondary airports: Often closer to business destinations

Book your charter flight now with our support and experience the difference!



ANCILLARY SERVICES

We can assist with visa arrangements, currency exchange, advance luggage shipment, work materials, and insurance policies for cancellation, lost baggage, and medical care



AUSTRALIA - NEW SOUTH WALES

BETWEEN VIBRANT CITIES, WILD NATURE, AND ANCIENT ABORIGINAL TRADITIONS

New South Wales is the multifaceted soul of Eastern Australia, where the cosmopolitan vitality of Sydney meets the sacredness of pristine landscapes and ancestral stories. From the Blue Mountains to the vineyards of the Hunter Valley, from the golden beaches of Byron Bay to the deserts of the Western Outback, this region is perfect for MICE events seeking authentic inspiration, breathtaking scenery, and profound connections. Here, brainstorming takes place on rooftops overlooking the Opera House, while team-building sessions are enjoyed on trails through eucalyptus forests or on ancient Aboriginal lands. New South Wales embodies the true Australia, one that vibrates with creative energy, environmental awareness, and collective spirit.

ACCESSIBILITY AND HOSPITALITY

New South Wales is easily accessible via Sydney International Airport (SYD), one of the main hubs in the Southern Hemisphere. Qantas, Australia's national airline, offers premium MICE services in Business and First Class: fully lie-flat seats, gourmet regional menus, dedicated lounges for corporate travelers, and personalized group assistance. Virgin Australia also efficiently connects Sydney with numerous domestic and regional destinations, offering a Business Class with ergonomic seating, exquisite dining, fast track, and access to premium lounges. On the ground, the rail and road network efficiently connects major regional destinations, from the mountains to the coast to the hinterland. Accommodation options include designer hotels, eco-resorts immersed in nature, wine lodges, and converted cultural spaces. Local partners ensure seamless hospitality, advanced technical support, and customized logistics solutions even in the most remote locations.

EXPERIENCES THAT INSPIRE AND UNITE

New South Wales offers immersive and original MICE experiences, ideal for fostering cohesion and vision. In Sydney, creative meetings can be held overlooking the bay, followed by nighttime contemporary art tours and tasting dinners by Michelin-starred chefs. In the Blue Mountains, teams can experience coaching sessions in the mist amidst canyons and sacred caves, or explore meditative trails connected to Aboriginal culture. In the Hunter Valley, guided tastings in the vineyards become relaxed yet strategic networking opportunities. In Byron Bay, relaxing sunrise walks are followed by plenary sessions on the beach. In the Far West hinterland, regenerative workshops are held in former coaching inns transformed into silent retreats.

THE IDEAL SEASONS FOR EVERY TYPE OF EVENT

- **Spring (September–November):** ideal for outdoor **events** among blooming botanical gardens, coastal paths and cultural festivals
- **Summer (December–February):** perfect for creative seaside activities, outdoor evening **events**, **retreats** along the north coast, and sailing **incentives**
- **Autumn (March–May):** harvest season and soft colors, perfect for **workshops** in the vineyards and moments of introspection in the mountains
- **Winter (June–August):** recommended for high-profile indoor **events**, spa experiences, Sydney **conferences**, and **retreats** in the southern forests



AUSTRALIA – CAPITAL TERRITORY

BETWEEN DIPLOMACY, URBAN DESIGN AND REGENERATING NATURE

The Australian Capital Territory—dominated by Canberra, the country's political and cultural capital—is a surprising region, where the balance between institutional rigor and environmental creativity creates an ideal setting for inspired, elegant, and unconventional MICE events. Here, geometric architecture and national museums blend with tranquil parks, contemplative lakes, and eucalyptus hills. It's a place where strategies are forged in the halls of Parliament and dinners are shared in contemporary art galleries, where business meets biodiversity and sustainable innovation. Canberra, with its relaxed pace and vocation for reflection, is perfect for meetings that seek vision, authenticity, and quality content.

ACCESSIBILITY AND HOSPITALITY

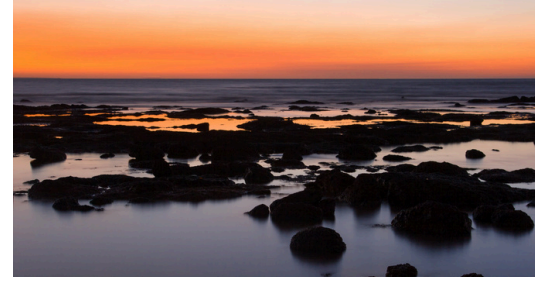
Canberra is served by Canberra International Airport (CBR), well connected to Sydney and Melbourne via frequent flights operated by Qantas and Virgin Australia. Qantas, in particular, offers high-end business MICE experiences with dedicated lounges, priority boarding, gourmet Australian-inspired catering, and personalized services for corporate groups. On the ground, the city is compact and well-connected, with an efficient road network and rapid urban transport, ideal for agile internal travel even for large events. Accommodations range from modern boutique hotels to resorts immersed in the bush, with numerous facilities equipped for small and medium-sized conferences and team meetings.

EXPERIENCES THAT INSPIRE AND UNITE

In the Australian Capital Territory, MICE experiences unfold in refined and intimate settings, where every activity fosters awareness and connection. Strategic meetings take place among the works of the National Gallery of Australia, followed by private cocktails inside the National Arboretum with sunset views. Team-building programs can include immersive sustainability workshops, Aboriginal painting workshops, or guided hikes in the Tidbinbilla Nature Reserve, among kangaroos and wombats. Relaxing walks can be organized on the shores of Lake Burley Griffin, while corporate retreats take place in eco-lodges immersed in the tranquil bush, just minutes from the city center.

THE IDEAL SEASONS FOR EVERY TYPE OF EVENT

- **Spring (September–November):** perfect for **events** immersed in nature, strolls through blooming gardens, and open-air **networking** moments
- **Summer (December–February):** ideal for indoor cultural activities with climate control, lakeside experiences, and outdoor evening **dinners**
- **Autumn (March–May):** an excellent time for **conferences** and **seminars** in serene environments, walks in the urban foliage, and moments of slow inspiration
- **Winter (June–August):** suitable for private and in-depth **events**, cultural experiences in museums, and **training sessions** in intimate, warm settings



AUSTRALIA – NORTHERN TERRITORY

BETWEEN ANCIENT DREAMS, RED DESERTS AND PRIMORDIAL INSPIRATION

The Northern Territory is a place where time expands and the essential takes shape. This remote and majestic region of Australia offers an extraordinary setting for MICE tourism seeking depth, regeneration, and authentic connection with the environment and culture. From Darwin, overlooking the Timor Sea, to the red lands of the outback leading to Uluru and Kata Tjuta, passing through the ancient rock art galleries of Kakadu and the tropical oases of Litchfield, the Northern Territory is a laboratory of ancestral connections and inner leadership. Strategic retreats are held here under the starriest sky in the world, cultural innovation workshops in Aboriginal communities, and experiential journeys that change pace and perspective. It is the ideal destination for those seeking transformative, sustainable, and memorable events.

ACCESSIBILITY AND HOSPITALITY

The Northern Territory is primarily served by Darwin International Airport (DRW), which is well connected to major Australian cities and Asian destinations. Qantas, Australia's national airline, offers flights with dedicated MICE services: priority check-in, modern business lounges, seasonal menus inspired by local cuisine, and a focus on comfort on long-haul connections. Virgin Australia also operates on this route, offering a premium experience with thoughtful onboard services, dedicated lounges, and flexible solutions for corporate groups. On the ground, logistics options are reliable and well-organized, with private transfers, VIP hospitality, and tailored services even in remote locations. Accommodation options are surprisingly diverse: luxury desert lodges, eco-resorts in the Top End, and cultural venues for corporate events immersed in Aboriginal tradition. Hospitality is informal yet profound, with a genuine concern for the group's well-being and great respect for the local area.

EXPERIENCES THAT INSPIRE AND UNITE

In the Northern Territory, the corporate experience transforms into an inner journey. You can start the day with a team coaching session in the shade of a centuries-old baobab tree or participate in a welcoming ritual with the elders of the Larrakia communities near Darwin. Workshops can take place in lodges overlooking rocky gorges or along crocodile-inhabited rivers, while breaks include rejuvenating swims in the waterfalls of Litchfield National Park or visual storytelling experiences at the Aboriginal art centers of Alice Springs. At Uluru, symbolic moments of shared vision can be organized before the majestic sacred rock at sunset, with silent dinners in the desert beneath the Milky Way. Every activity is connected to the earth and its spirituality, encouraging authenticity, resilience, and listening.

THE IDEAL SEASONS FOR EVERY TYPE OF EVENT

- **Dry season (May–October):** ideal for outdoor **events**, national park tours, and walking tours between Darwin, Katherine, and Uluru
- **Wet Season (November–April):** perfect for more intimate cultural experiences, eco-lodge **events**, and slow reflection immersed in the tropical landscape



AUSTRALIA – QUEENSLAND

BETWEEN RAINFORESTS, CORAL REEFS AND TROPICAL RHYTHMS THAT REGENERATE

Queensland is a land of vibrant contrasts and majestic nature, where every corporate event can be transformed into a regenerating and inspiring experience. From vibrant Brisbane to the primordial silence of the Daintree Rainforest, from the Great Barrier Reef to the Whitsunday Islands, Australia's "Sunshine State" offers an incredible variety of settings for the most innovative and unconventional MICE tourism. Here, you can combine networking and snorkeling, board meetings among palm trees, and coaching sessions in the midst of the tropical jungle. It's a perfect destination for those seeking a fusion of wellness, leadership, and sustainability, with a sunny spirit that fosters creativity and cohesion among colleagues.

ACCESSIBILITY AND HOSPITALITY

Queensland is well served by three major airports: Brisbane (BNE), Cairns (CNS), and Gold Coast (OOL), all with frequent connections from major Australian cities and international hubs in the Asia-Pacific region. Qantas, Australia's national airline, guarantees an exceptional experience for MICE travelers: fully flat-bed Business Class seats, regional chef-designed menus, in-flight entertainment, and premium lounges with personalized services for corporate groups. Virgin Australia operates high-quality business services, offering lie-flat seats, exquisite catering, dedicated lounges, and specific support for MICE groups, with a route network that complements and enhances regional accessibility. On the ground, experienced local operators offer VIP hospitality, flexible transportation even to the most remote islands, and assistance for integrated events. Queensland's hospitality ranges from beachfront resorts with panoramic rooms to eco-lodges in the tropical rainforest, to creative accommodations in urban settings like South Bank in Brisbane or the artistic heart of Cairns.

EXPERIENCES THAT INSPIRE AND UNITE

Queensland is a treasure trove of unconventional experiences for the MICE world. You can organize a team retreat on a private island in the Whitsundays, alternating meetings with dives in the coral reef or relaxing walks at sunrise. In Brisbane, venues like the Gallery of Modern Art or industrial rooftops transformed into creative spaces host conferences and product launches overlooking the river. The Daintree Rainforest, a UNESCO World Heritage Site, is the ideal setting for immersive leadership courses among ancient plants and ancient Aboriginal rituals. In the Sunshine Coast and Noosa region, workshops on sustainability and slow culture are hosted in eco-villages and biodynamic farms. For adrenaline seekers, Queensland also offers ziplining in the jungle, helicopter excursions over reefs and canyons, and marine safaris among whales, turtles, and giant manta rays.

THE IDEAL SEASONS FOR EVERY TYPE OF EVENT

- **Spring (September–November):** ideal for outdoor programs along the coast, water activities, and cultural **events** in cities like Brisbane or Cairns
- **Summer (December–February):** perfect for island **incentives**, tropical **retreats**, and rejuvenating activities at oceanfront resorts
- **Autumn (March–May):** optimal time for strategic rainforest **encounters**, reef explorations, and local food and wine discoveries
- **Winter (June–August):** dry, temperate season in the tropical north: ideal for high-end **events**, outdoor **team building** experiences, and stays in remote lodges with all the comforts



AUSTRALIA – SOUTH

AMONG ENDLESS VINEYARDS, RED DESERTS AND WILD COASTS WITH INTACT CHARM

South Australia is a land that invites you to slow down, reflect, and rediscover the profound meaning of travel. It's a region that combines winemaking elegance, ancestral silence, and a stunning natural landscape, from the lunar expanses of the Flinders Ranges desert to the secret beaches of Kangaroo Island. Adelaide, its capital, is a refined and cultured city on a human scale, blending contemporary art, international festivals, and a vibrant food scene. But it's beyond the city limits that South Australia reveals its most unique MICE potential: workshops in the Barossa Valley's wine resorts, team retreats in eco-lodges among kangaroos, strategy sessions in the desert's fossil craters or in ancient mining towns. An authentic region that regenerates and deeply inspires.

ACCESSIBILITY AND HOSPITALITY

South Australia is well connected via Adelaide International Airport (ADL), with direct flights from major Australian and Asian cities, and via intermediate hubs, even from Europe. Qantas, Australia's national airline, offers high-end onboard services for MICE groups: a business lounge with signature catering, a business cabin with fully flat-bed seats, wellness kits for long flights, onboard Wi-Fi, and personalized concierges for events. Virgin Australia also operates frequent flights, ensuring a premium experience with comfortable business cabins, dedicated ground services for corporate groups, and a focus on flexibility for MICE events. On the ground, dedicated services include VIP welcomes, personalized transfers, including to wine regions or islands, and support for integrated events in unconventional locations. Accommodation options range from elegant boutique hotels in central Adelaide to wine resorts, bush glamping, and lodges with ocean or vineyard views.

EXPERIENCES THAT INSPIRE AND UNITE

South Australia is perfect for experiential and regenerative programs. Creative meetings can be held in historic wineries in the Barossa or McLaren Vale, combined with wine blending sessions as a metaphor for leadership and collaboration. On Kangaroo Island, corporate retreats can be held in sustainable lodges, with outdoor activities among sea lions, cliffs, and eucalyptus forests. In the Flinders Ranges desert, immersive experiences can be enjoyed in the landscapes of the ancient Adnyamathanha Aboriginal people, with mindful walking trails, storytelling workshops, and stargazing. Adelaide, meanwhile, is ideal for more urban and cultural events: meetings in art museums, exclusive dinners on festival rooftops, or architectural tours of modernism and colonial history.

THE IDEAL SEASONS FOR EVERY TYPE OF EVENT

- **Spring (September–November):** perfect for outdoor **events** among the vineyards, with mild weather and blooms in the natural parks
- **Summer (December–February):** ideal for beach **incentives** on Kangaroo Island and evening activities under the stars in the desert
- **Autumn (March–May):** perfect season for food and wine experiences, regenerative walks in the Flinders Ranges, and cultural programs in Adelaide
- **Winter (June–August):** suitable for high-quality indoor **retreats**, tastings, slow **events**, and immersive **workshops** in intimate, warm environments



AUSTRALIA – TASMANIA

BETWEEN UNCONTAMINATED NATURE, INDIGENOUS CULTURE AND SLOW ADVENTURES

Tasmania is a largely unexplored gem for MICE tourism, an island where time seems to slow down and nature reigns supreme. Ancient rainforests, majestic mountains, rugged coastlines, and crystal-clear lakes offer a unique setting for corporate events seeking authenticity, inspiration, and profound regeneration. Hobart, a vibrant and creative capital, combines historic markets, contemporary art galleries, and quality cuisine based on excellent local produce. But it's Tasmania's wild heart, from UNESCO-listed national parks to small artisan communities, that offers unconventional MICE experiences, perfect for fostering cohesion, well-being, and innovation.

ACCESSIBILITY AND HOSPITALITY

Tasmania is easily accessible via Hobart (HBA), Launceston (LST), and Devonport airports, with regular flights from major Australian hubs such as Melbourne and Sydney. Qantas and Virgin Australia offer dedicated services for business travelers and MICE groups, with welcoming lounges, business cabins with fully flat-bed seats, onboard Wi-Fi, and premium catering showcasing local flavors. Virgin Australia, in particular, stands out for its high-quality service on board and on the ground, with personalized assistance for groups, priority boarding, and dedicated lounges. On the ground, services include personalized transfers, VIP welcome, event planning in exclusive locations, and logistical support for travel to even the most remote areas of the island. Accommodation options range from urban boutique hotels to eco-lodges nestled in the bush, and luxury resorts overlooking tranquil bays or surrounded by mountain landscapes.

EXPERIENCES THAT INSPIRE AND UNITE

In Tasmania, every experience becomes a moment of discovery and connection. Team building can be organized in the wild expanses of Cradle Mountain National Park, with guided treks and workshops immersed in nature. The wineries of the Tamar Valley offer the opportunity for exclusive tastings and food and wine workshops that combine culture, science, and creativity. Hobart invites unique cultural experiences, such as visits to MONA (Museum of Old and New Art), private dinners in renovated old barracks, and strolls through farmers' markets. For those seeking more intimate inspiration, small artisan communities in rural regions offer pottery, weaving, and indigenous art workshops, combining tradition and innovation in an authentic atmosphere.

THE IDEAL SEASONS FOR EVERY TYPE OF EVENT

- **Spring (September–November):** ideal for outdoor events and team building programs amidst the blooms and mild climate
- **Summer (December–February):** perfect for coastal incentives, Derwent Channel cruises and outdoor sports activities
- **Autumn (March–May):** a season rich in color, ideal for creative workshops, tastings, and moments of reflection
- **Winter (June–August):** suitable for charming indoor events, culinary experiences, and retreats in lodges immersed in the silence of the woods



AUSTRALIA – VICTORIA

BETWEEN URBAN CULTURE, COASTAL LANDSCAPES AND EXCELLENT VINEYARDS

Victoria is a region that uniquely blends the vibrant energy of Melbourne, one of Australia's cultural and creative capitals, with the rejuvenating calm of its natural landscapes, from the beaches of the Great Ocean Road to the vineyards of the Yarra Valley. Here, urban dynamism blends with more intimate atmospheres and breathtaking views, offering fertile ground for MICE events that combine innovation, art, food and wine, and nature. The region welcomes with a blend of contemporary elegance and tradition, with venues ranging from converted industrial spaces to refined boutique hotels, including nature reserves perfect for experiential team building activities.

ACCESSIBILITY AND HOSPITALITY

Victoria is easily accessible via Melbourne International Airport (MEL), one of Australia's busiest and most modern hubs. Qantas and Virgin Australia offer high-quality business services with comfortable cabins, premium lounges, and exquisite catering designed for MICE groups. On the ground, the transportation network is efficient and well-organized, with dedicated transfers and personalized assistance available. Melbourne offers world-class conference facilities, luxury hotels, and innovative event spaces, while experienced operators in the surrounding areas support the organization, logistics, and tailored services for events of all sizes.

EXPERIENCES THAT INSPIRE AND UNITE

Victoria is a land of great contrasts and opportunities. In Melbourne, team building can take place amid contemporary art galleries, iconic street art, and creative districts, followed by wine tastings at the wineries of the Yarra Valley or Mornington Peninsula. The Great Ocean Road offers adventurous incentives, with surfing, scenic hikes, and moments of relaxation on pristine beaches. In the Grampians National Park, workshops and leadership courses intertwine with mountain trekking, wildlife observation, and immersion in ancient Aboriginal cultures. Cultural, gastronomic, and naturalistic experiences blend to create MICE events rich in meaning and deep engagement.

THE IDEAL SEASONS FOR EVERY TYPE OF EVENT

- **Spring (September–November):** ideal time for outdoor **events**, cultural festivals, and food and wine **incentive** programs
- **Summer (December–February):** perfect season for coastal **team building**, water sports, and nature **retreats**
- **Autumn (March–May):** harvest time in the vineyards, ideal for culinary **events**, creative **workshops**, and relaxed **networking** moments
- **Winter (June–August):** suitable for indoor **events**, art festivals, and spa experiences in mountain resorts



AUSTRALIA – WESTERN TERRITORY

BETWEEN MAJESTIC DESERT, ENDLESS COASTS AND RELAXED INNOVATION

Australia's Western Territory is a land of powerful contrasts, where vast desert meets white beaches and turquoise ocean, offering extraordinary settings for MICE events seeking authentic, exclusive, and rejuvenating experiences. Perth, the vibrant and cosmopolitan capital, embodies the energy of a modern metropolis with a laid-back soul, while places like the Pinnacles region, Karijini National Park, and the Rottneest Archipelago represent wild and spectacular nature, perfect for adventurous team building and immersive incentives. Here, innovation and Aboriginal culture intertwine, creating a unique environment where business and inspiration coexist.

ACCESSIBILITY AND HOSPITALITY

The Western Territory is well connected via Perth International Airport (PER), a key hub in the region, served by airlines such as Qantas and Virgin Australia. Qantas, Australia's national airline, offers dedicated business services to MICE travelers: spacious cabins, exclusive lounges, high-quality catering, and personalized onboard assistance. Virgin Australia complements the offering with competitive business solutions, comfortable lounges, and attentive service designed for corporate groups, ensuring flexibility and comfort even for multi-destination events. On the ground, Perth boasts state-of-the-art conference facilities, luxury hotels, and an efficient transportation network to ensure punctual and comfortable transfers. Local operators with extensive experience support the organization of complex events, offering tailored services, interpretation, and ideal logistics solutions for groups of all sizes.

EXPERIENCES THAT INSPIRE AND UNITE

Western Australia is a destination that invites exploration and surprise. In Perth, brainstorming sessions can be organized in contemporary architecture, followed by visits to art galleries and wine tastings in the nearby Swan Valley. The Pinnacles Desert, with its unique rock formations, is the perfect setting for outdoor team building among dunes and fiery sunsets. Rottneest Island, with its crystal-clear beaches and famous quokkas, offers relaxing incentives and moments of connection with nature. In Karijini National Park, immersive experiences among gorges, waterfalls, and canyons foster group dynamics based on challenge and shared discovery. Aboriginal culture, wilderness, and innovation blend for an unforgettable MICE experience.

THE IDEAL SEASONS FOR EVERY TYPE OF EVENT

- **Spring (September–November):** mild climate ideal for outdoor **events**, excursions and cultural programs
- **Summer (December–February):** hot and dry period, perfect for marine activities and ocean **incentives**
- **Autumn (March–May):** stable and pleasant weather for outdoor **workshops** and **team building**
- **Winter (June–August):** cool, dry season, suitable for indoor **events** and work **retreats** in the city or resort



AUSTRALIA – EXTERNAL TERRITORIES

AMONG REMOTE ISLANDS, PRISTINE NATURE AND EXCLUSIVE HOSPITALITY

Australia's Outer Territories represent a little-known gem, yet brimming with potential for MICE events that combine exclusivity, pristine nature, and adventure. From the laid-back colonial atmosphere of Norfolk Island to the verdant marine isolation of Christmas Island, to the rugged beauty of Kelling Island (Coco Islands), these locations offer unique settings for corporate retreats, immersive workshops, and regenerative incentives. Far from mass tourism, these islands are true havens for groups seeking authentic experiences, direct contact with protected ecosystems, and a human dimension of calm, positive energy, and surprising discoveries.

ACCESSIBILITY AND HOSPITALITY

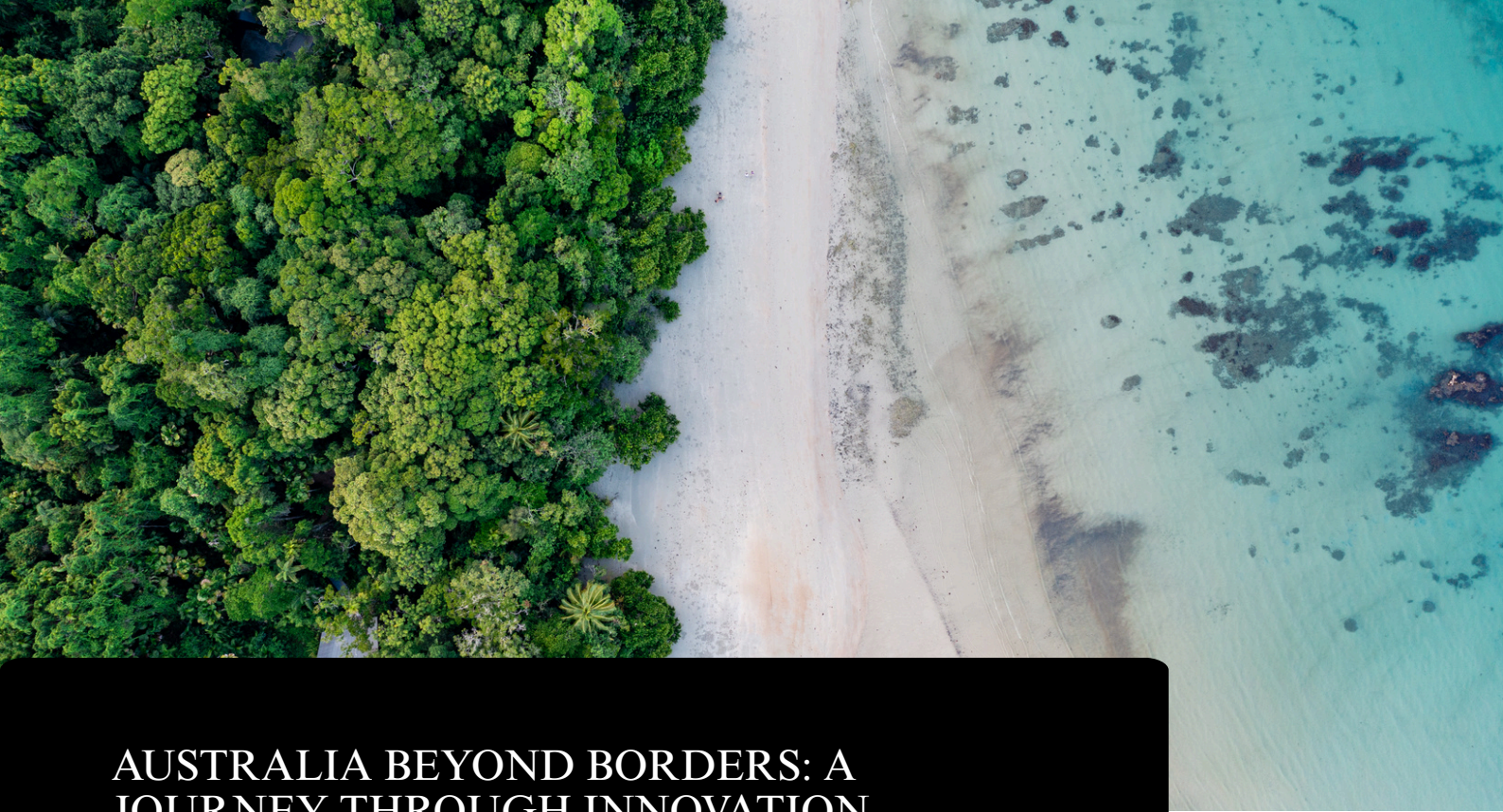
Australia's Outer Territories are accessible via dedicated flights from major airports like Sydney and Perth, with limited but reliable connections, ensuring an exclusive and intimate experience. Airlines operate business services and flexible options for MICE groups, offering comfort and personalized assistance. On the ground, accommodations range from boutique hotels to eco-friendly lodges, where hospitality is expressed with genuine attention to detail and the needs of groups. Local partners provide comprehensive support for logistics, event management, and team building activities, ensuring a seamless and tailored experience even in the most remote locations.

EXPERIENCES THAT INSPIRE AND UNITE

In the Outer Territories, every day is a journey through pristine nature and local culture. On Norfolk Island, the historic charm of colonial architecture blends with excursions through subtropical forests and crystal-clear bays, perfect for outdoor work sessions or rejuvenating team building activities. Christmas Island is renowned for its spectacular red crab migration and diving in biodiversity-rich waters, offering immersive ecotourism experiences and moments of natural inspiration. The Kelling Islands, part of the remote Cocos archipelago, offer wild and unspoiled landscapes ideal for leadership programs focused on adaptation and resilience. Here, time seems to slow down, offering spaces for concentration and deep connection, far from the noise of the world.

THE IDEAL SEASONS FOR EVERY TYPE OF EVENT

- **Spring and Summer (September–February):** ideal time for marine activities, diving, and outdoor **team building** in a warm and welcoming climate
- **Autumn and Winter (March–August):** mild and calm seasons, perfect for **workshops, retreats** and **training programs** immersed in nature



AUSTRALIA BEYOND BORDERS: A JOURNEY THROUGH INNOVATION, WILDERNESS, AND SECRET ISLETS

ITINERARY – INTEGRATED MICE

DAY 1 – SYDNEY AND THE BLUE MOUNTAINS: THE ENCOUNTER OF URBANITY AND WILD NATURE

The first day begins in vibrant **Sydney**, a dynamic metropolis brimming with innovative spaces for meetings and workshops. After a morning of meetings in the heart of the city, among futuristic venues and panoramic rooftops overlooking the Sydney Opera House, the afternoon shifts to the **Blue Mountains**. Here, team-building excursions through ancient forests and spectacular gorges reawaken team cohesion. Hikes among the famous "Three Sisters," outdoor relaxation, and starlit dinners in eco-friendly lodges offer a unique blend of nature and creative inspiration. A perfect blend of urban power and the rejuvenating silence of the mountains.

DAY 2 – QUEENSLAND: GREAT BARRIER REEF AND RAINFOREST ADVENTURES

The second day flies north to **Queensland**, a land of extraordinary contrasts. In the morning, a briefing and workshop at a waterfront location in **Cairns** prepares the group for extraordinary experiences: diving or snorkeling in the **Great Barrier Reef** to discover a colorful and pristine underwater world. In the afternoon, excursions to the **Daintree Rainforest**, among ancient trees and rare fauna, offer team-building activities focused on observation and adaptation to the natural environment. The day concludes with a dinner experience at an eco-lodge nestled in the jungle, where local cuisine meets sustainability.

DAY 3 – NORTHERN TERRITORY AND KAKADU NATIONAL PARK: IMMERSION IN ABORIGINAL CULTURE AND PRIMAL NATURE

From Queensland to the wild heart of Australia, the third day takes the group to the **Northern Territory**. Between **Darwin** and **Kakadu National Park**, a UNESCO World Heritage site, they enjoy a MICE experience that combines ancient culture and ancestral landscapes. Workshops and team-building sessions alternate with meetings with Aboriginal communities to discover stories, rock art, and survival rituals. Guided walks along sacred rivers, birdwatching, and storytelling evenings around the campfire offer the group a space for reflection and shared growth, far from any urban distractions.

DAYS 4 & 5 – OUTER TERRITORIES: CHRISTMAS ISLAND AND NORFOLK ISLAND, REMOTE HAVENS FOR FAR-SEEKING VISIONS

The fourth day is a journey into a lesser-known but more surprising Australia: we take off for **Christmas Island**, a slice of paradise surrounded by the Indian Ocean. Here, the group comes into contact with primordial nature in a timeless setting: they can witness the famous red crab migration or hike jungle trails for team building sessions focused on adaptability and collaboration in extreme environments. Sustainability workshops and open-air strategy sessions are held in lodges surrounded by greenery or on terraces overlooking pristine bays. The following day, we fly to the **Cocos (Keeling) Islands**, where pristine white beaches, pristine coral reefs, and local villages welcome the group in a suspended atmosphere. Here, they can enjoy an immersive co-living experience with local communities, organize team coaching activities on a boat between the islands, or snorkel and enjoy relaxing walks on the sand at sunset. The evening concludes with a barefoot dinner under the stars, surrounded only by the sound of the ocean and the magic of creative isolation. These islands aren't just an escape: they're a return to the essentials, where thinking becomes clear and strategic decisions find space.

DAY 6 – MELBOURNE AND THE GREAT OCEAN ROAD: URBAN CREATIVITY AND PRISTINE OPEN SPACES

After regenerating in remote territories, the sixth day brings the group back to the cultural heart of Australia: **Melbourne**, a vibrant, artistic, and unconventional metropolis. Workshops and presentations take place in creative spaces, such as former factories transformed into digital hubs or contemporary art galleries, stimulating new visions and collaborations. After lunch, the itinerary winds along the **Great Ocean Road**, a spectacular road trip transformed into a shared experience of beauty and discovery. Stops to contemplate the **Twelve Apostles**, relaxing strolls on deserted beaches, and hikes through eucalyptus forests make the journey an opportunity to rejuvenate the mind and leadership. The journey concludes with a farewell dinner at a winery overlooking the ocean, a finale that leaves the group with the feeling of having traversed the authentic, profound, and surprising Australia.



WOULD YOU LIKE A FREE QUOTE?

We hope you enjoyed this travel planner and inspired your next business MICE travel.

If you want to organize your next business (MICE) travel with us, all you have to do is follow the two steps indicated in the following pages.

We will do everything possible to prepare a tailor-made program and quotation for excellent value for money.



JOIN THE ATLANTIC CORPORATE CLUB

It will allow us to know all your needs in terms of business
(MICE) travel and to reward you with tailor-made
services

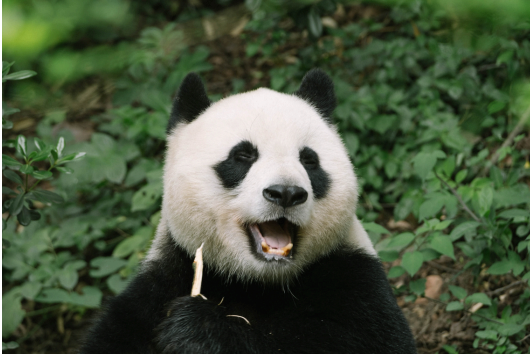
[JOIN](#)



REQUEST YOUR QUOTE

Fill out and send the form with all the details and
you will receive your free quote

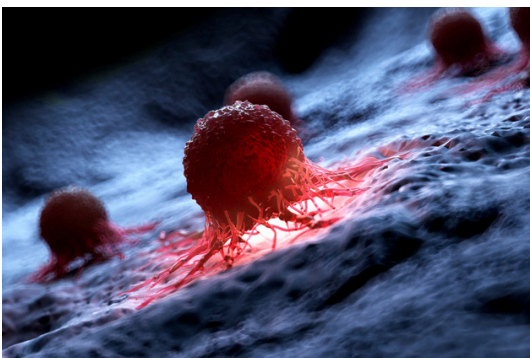
QUOTE



OUR SUPPORT FOR SAFEGUARDING THE PLANET AND CANCER RESEARCH



WITH OUR TRAVELS, WE WANT TO OFFER OUR CUSTOMERS THE OPPORTUNITY TO CONTRIBUTE TO NON-PROFIT ORGANIZATIONS COMMITTED TO SOLVING THE FOLLOWING GLOBAL PROBLEMS



- CONSERVATION OF FLORA - FAUNA
- GLOBAL WARMING
- CANCER RESEARCH



Atlantic Travel & Tours Ltd

London, New York
Los Angeles, Miami
Denver

ATLANTIC TRAVEL & TOURS LTD

HEADQUARTERED IN THE UNITED STATES AND THE UNITED KINGDOM

REGISTERED COMPANIES

USA - DENVER - COLORADO - COMPANY REGISTRATION NUMBER: 202 110 96 014

UK - LONDON - COMPANY REGISTRATION NUMBER: 130 288 33

E-MAIL

USA - unitedstatesadministration@atlantictourstravel.com

UK - unitedkingdomadministration@atlantictourstravel.com

WEBSITE

www.visitatlantictraveltours.com

FULL CONTACT DETAILS

www.visitatlantictraveltours.com/contact