

ATLANTIC TRAVEL & TOURS

ENGLISH LANGUAGE COURSES

USA

**LIVE ENGLISH IN THE UNITED STATES:
STUDY, CULTURE, AND IMMERSION IN AMERICA'S
ICONIC CITIES**



WWW.VISITATLANTICTRAVELTOURS.COM

FROM THE CEO - FOUNDER

Dear students,

Studying the English language in the United States represents one of the most complete and transformative educational experiences available internationally.

Total immersion in a native-speaking environment, combined with a highly structured education system and a wide range of iconic destinations, makes the USA one of the most sought-after locations for English language learning.

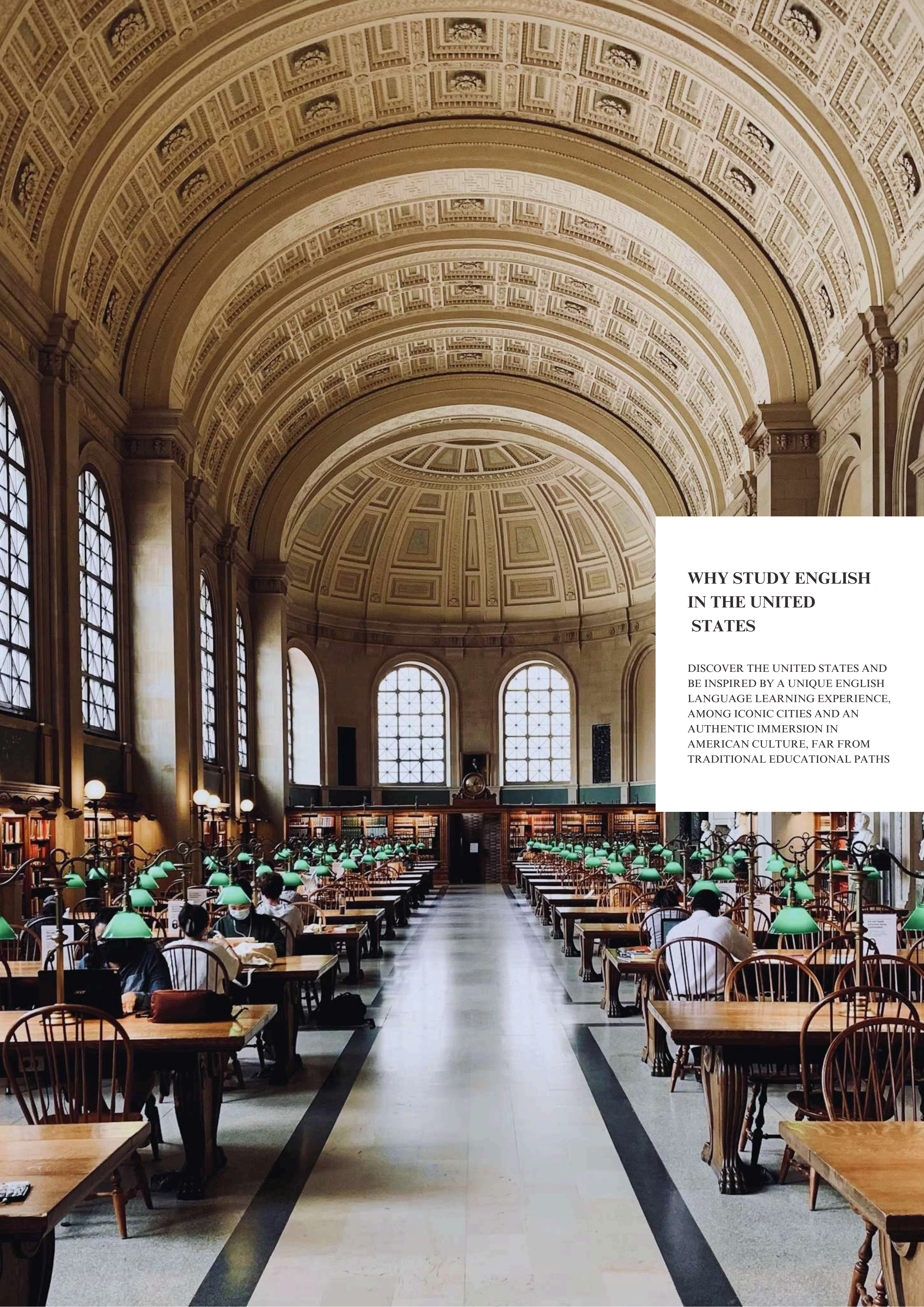
Our specialized tour operator offers tailor-made language programs for students of all ages: children, teenagers, university students, professionals, and adults. Each pathway is designed to ensure a balance between academic learning, personal growth, and cultural discovery.

The United States is not just a study destination, but a true laboratory for linguistic and social experience.



Steve Tabacchi

DR. STEVE TABACCHI
CEO - FOUNDER
ATLANTIC TRAVEL & TOURS



WHY STUDY ENGLISH IN THE UNITED STATES

DISCOVER THE UNITED STATES AND
BE INSPIRED BY A UNIQUE ENGLISH
LANGUAGE LEARNING EXPERIENCE,
AMONG ICONIC CITIES AND AN
AUTHENTIC IMMERSION IN
AMERICAN CULTURE, FAR FROM
TRADITIONAL EDUCATIONAL PATHS

WHY CHOOSE THE UNITED STATES TO STUDY ENGLISH



Choosing the United States means access to a dynamic, innovative, and practice-oriented education system. American English, now the most widely used language in the professional and digital world, represents a concrete competitive advantage.

Partner schools are selected for their high academic standards and the quality of their services. Students are immersed in international environments, where daily interaction with people of different nationalities fosters rapid and natural learning.

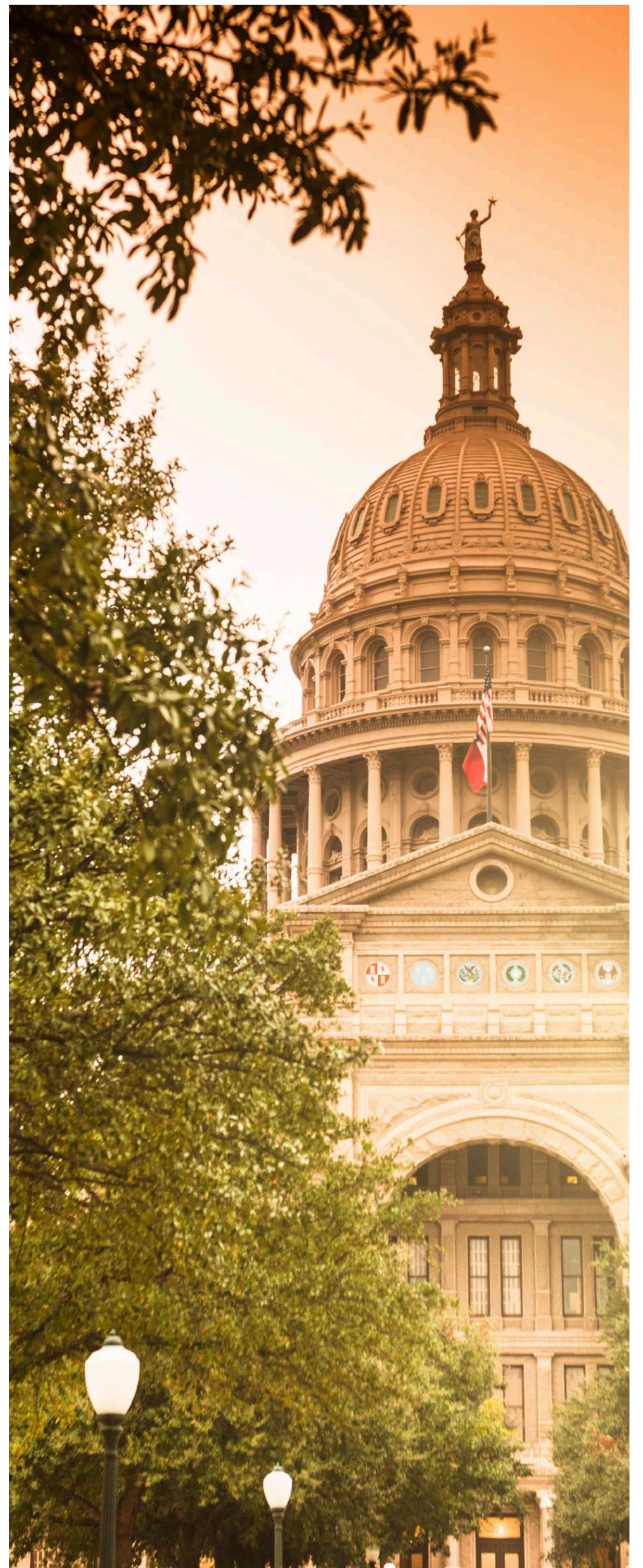
Another strength is its geographical variety: each city offers a different experience, from cosmopolitan metropolises to historic university towns to coastal resorts.

MAIN DESTINATIONS

The destinations in the United States have been selected to ensure a balance between educational quality and cultural experience.

New York offers a unique international urban setting, ideal for students who want to learn the language in a dynamic and fast-paced environment. Boston is the academic heart of the country, with a strong university focus. San Francisco is perfect for those interested in innovation and technology. Los Angeles combines study and creativity, while Miami offers a multicultural environment with a strong Latin American influence. Chicago completes the picture with a solid urban structure and an excellent network of language schools.

In addition to major American cities, our network may also include select secondary destinations such as Seattle, Austin, Denver, and Portland, subject to the annual availability of accredited partner schools.





GENERAL ENGLISH PROGRAMS

General English programs are designed to develop all language skills: speaking, listening, reading, and writing. Courses are available for all levels, from beginner (A1) to advanced (C1-C2), according to the Common European Framework of Reference (CEFR).

Lessons are structured in small groups to ensure a high level of interaction. The teaching approach is communicative and practical, with a focus on everyday conversation and real-world language use.

Weekly hours can range from standard to intensive programs, with the possibility of customization based on the student's goals.

SPECIALIST PROGRAMS AND BUSINESS ENGLISH



Highly specialized Business English programs are available for university students and professionals. These courses include simulations of real-world work situations, development of business communication skills, drafting professional emails, presentations, and negotiations.

Preparation programs for international exams such as IELTS, TOEFL and Cambridge Exams are also available.

Many schools also offer University Pathway programs, which allow direct entry to American colleges and universities after completing the language course.

PROGRAMS FOR YOUTH AND SUMMER CAMPS



Programs for children and teenagers are one of the most popular experiences. Summer camps in the United States combine language learning, sports activities, excursions, and international socializing.

Students are supported by qualified staff 24 hours a day and placed in safe environments such as university campuses or supervised residences.

Activities include sports, creative workshops, cultural visits, and themed days, all conducted in English to encourage natural learning.

ACCOMMODATIONS

Accommodation options are designed to ensure comfort, safety, and language immersion.

Homestays with selected American families allow students to experience local life and practice their English outside of the classroom.

Student residences offer greater independence and a strong international dimension.

University campuses are the ideal solution for intensive programs and summer camps, ensuring a comprehensive and structured experience.





CULTURAL EXPERIENCE

Studying in the United States also means living a unique cultural experience.

Each city offers activities and visits that enrich the educational journey: museums, historic districts, sporting events, shows, and iconic attractions.

In New York, you can visit Times Square, Central Park, and the Statue of Liberty. In Los Angeles, you can explore Hollywood and the Californian beaches. In Boston, you can breathe in the history of America's origins.

These experiences promote natural and contextualized language learning.

TAILOR-MADE TRAVEL EXPERIENCE AND INFORMAL LANGUAGE IMMERSION



In addition to traditional English language courses, our tour operator offers the opportunity to complement your study program with completely customized leisure trips.

This hybrid formula allows students to experience the destination in a more authentic and dynamic way, transforming the language stay into a complete travel experience.

The goal is to maximize English language learning even outside the classroom, through real-life situations and informal settings such as restaurants, local events, guided tours, excursions, and social activities.

This approach promotes greater communication fluency and faster acquisition of language skills.

Trips can be tailor-made before, during, or after the language course, creating personalized itineraries that include the main attractions of the chosen destination or combinations of multiple cities.

It is possible to request solutions with a tour leader, guide, or a completely independent formula, depending on the level of autonomy and the client's needs.

This flexibility makes the program suitable for both young students and adults and professionals.

This integration between study and tourism represents a distinctive added value, as it allows students to experience the English language not only in the classroom, but as an integral part of an immersive and memorable travel experience.



SERVICES INCLUDED

Our tour operator guarantees a complete and professional service.

Included: personalized counseling, initial level test, school registration, accommodation booking, documentation assistance, pre-departure support, and on-site assistance.

You can also request travel and study insurance, airport transfers, and customized programs for school or corporate groups.

Our goal is to ensure a stress-free, fully organized, and safe experience.

Studying English in the United States means investing in your personal and professional future. Each program is designed to deliver tangible results in terms of language skills, independence, and personal growth.

The USA represents one of the most complete destinations in the world for studying English, thanks to the quality of its schools, the variety of its cities and the richness of its cultural experience.

Our commitment is to transform every trip into a high-level educational experience, tailor-made for each student.

Your future begins with language. Your English begins in the United States.



QUALITY AND SERVICE UPDATES

The experiences and services presented in this brochure have been selected based on qualitative criteria focused on comfort, accessibility, and the personalization of the study and travel experience.

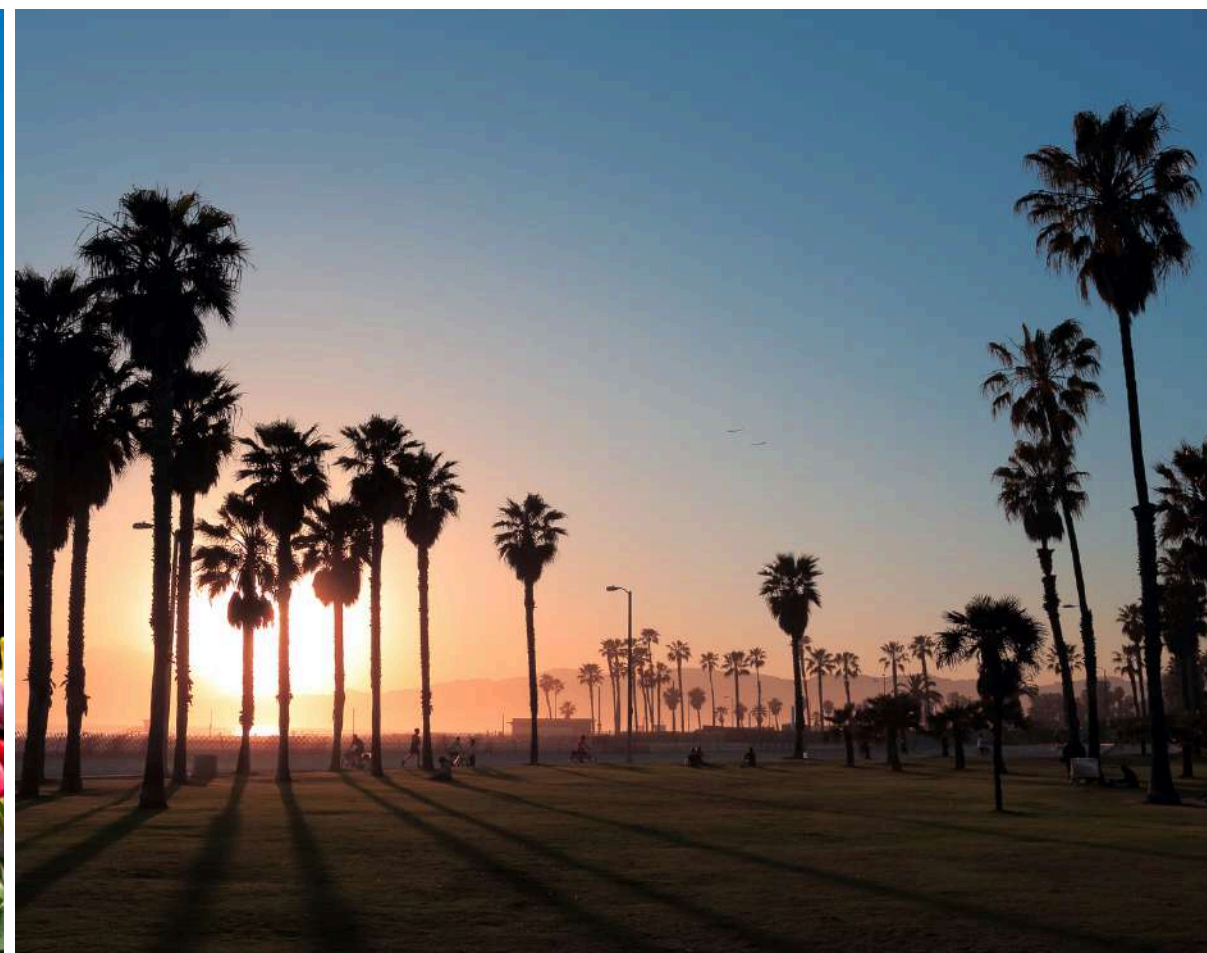
As operational conditions, dedicated services, and policies may be subject to updates or changes over time, each proposal will be reviewed and confirmed at the quotation stage, in order to ensure full alignment with the traveler's specific requirements and the expected quality standards.



**DISCOVER THE UNITED
STATES BEYOND THE
LANGUAGE COURSE**

FROM THE ATLANTIC COAST TO THE VAST LANDSCAPES OF THE AMERICAN WEST, EACH MACRO REGION OFFERS UNIQUE TRAVEL EXPERIENCES DESIGNED TO GUIDE STUDENTS, FAMILIES, AND PROFESSIONALS IN DISCOVERING A MORE AUTHENTIC AND ENGAGING UNITED STATES.

WHEN TO TRAVEL TO THE UNITED STATES



The United States can be visited at any time of year, but each season offers different atmospheres.

Spring is perfect for trips to historic cities, flower-filled countryside, and natural parks that come back to life after winter.

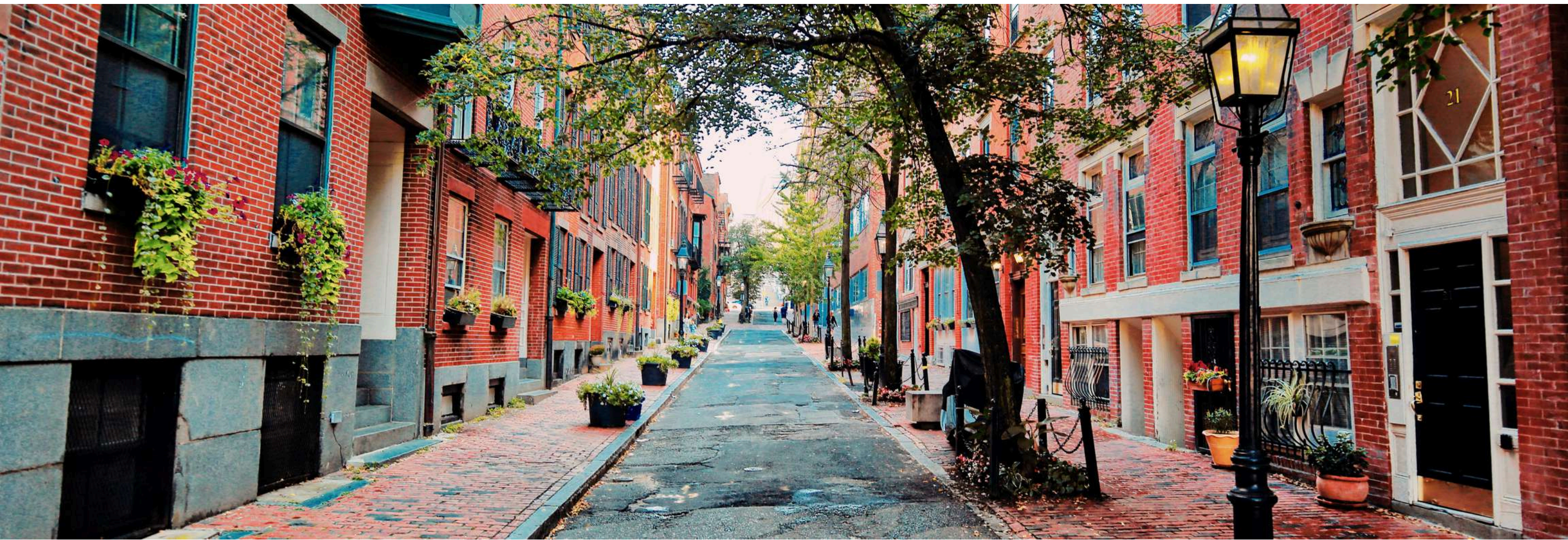
Summer is the perfect time to explore mountains, national parks, and northern regions like Alaska and the Pacific Northwest.

Autumn is one of the most evocative seasons, especially in New England where the forests transform into a spectacle of extraordinary colors.

Winter offers evocative atmospheres among snow-capped mountains, illuminated cities and mild-climate destinations such as the South of the United States and Hawaii.



NEW ENGLAND – WHERE AMERICA BEGAN TO TELL ITS STORIES



New England is the historic cradle of the United States, the place where the Pilgrim Fathers landed in Plymouth in 1620, sparking a new narrative of the Western world. The first permanent colonial settlements were born here, the sparks of the American Revolution were ignited here, and some of the country's oldest cultural institutions were formed here. Over the centuries, the region has preserved a distinct identity: austere and refined, deeply rooted in maritime tradition, intellectual thought, colonial architecture, and the power of nature. Culturally, New England is a mosaic of influences: the Puritan legacy, English roots, the great university and literary tradition, the seafaring soul of Atlantic ports and the rural soul of farms and white villages with steepled churches. It is the land of solitary lighthouses and town greens, of covered bridges and wooden houses overlooking the ocean, of autumn foliage that transforms entire valleys into palettes of red and gold. Geographically, the region covers approximately 186,000 km², an area equivalent to over half of Italy's territory. To give a concrete perspective, it is larger than the entire Northeast of Italy (Veneto, Trentino-Alto Adige, and Friuli-Venezia Giulia combined) and slightly smaller than the entire peninsula up to the city of Rome. This compact and surprisingly diverse space encompasses six states:

- MAINE
- NEW HAMPSHIRE
- VERMONT
- MASSACHUSETTS
- RHODE ISLAND
- CONNECTICUT

In just a few hours' drive, you can travel from the rugged coastline of Maine to the White Mountains of New Hampshire, from the Green Mountains of Vermont to the bays and islands of Massachusetts, all the way to the elegant cliffs of Rhode Island and the rolling hills of Connecticut. It's a region that blends ocean, mountains, lakes, and historic cities with a continuity rare in the United States.

The main airports providing access to the region are:

- Logan International Airport - Located in Boston, is the main international gateway and ideal for Massachusetts, New Hampshire and southern Maine
- Bradley International Airport - Between Hartford (Connecticut) and Springfield (Massachusetts), perfect for Connecticut and western Massachusetts
- T.F. Green International Airport - In Warwick - Rhode Island - ideal for Rhode Island, Cape Cod and the islands
- Portland International Jetport - In Portland, provides direct access to southern Maine and the Atlantic Coast

New England isn't just a destination: it's a layered tale of history, nature, and identity. It's America's origins, but also its most intimate and authentic, where time seems to slow down and every landscape invites a profound experience.

THE LANGUAGE EXPERIENCE IN THE HEART OF NEW ENGLAND

Studying English in New England means entering one of the most prestigious educational regions in the United States, where leading language schools operate in cities with a strong academic and cultural vocation.

In Boston, the region's main hub, language programs take place in an international urban context, across neighborhoods such as Back Bay and Downtown, as well as in the wider metropolitan area including Cambridge, where the presence of Harvard University and the Massachusetts Institute of Technology fosters an environment constantly oriented toward study, cultural exchange, and daily language practice.

In Providence, Rhode Island, English schools are set within a compact and creative city shaped by Brown University and the Rhode Island School of Design, where the language is learned through a dynamic and authentic urban experience.

In New Haven, Connecticut, the academic setting of Yale University defines a highly formative environment, where English is continuously practiced between campuses, historic libraries such as the Sterling Memorial Library, and a city that maintains a balance between academic tradition and everyday American life.

A JOURNEY BEYOND THE LANGUAGE COURSE: AUTHENTIC EXPERIENCES AND DESTINATIONS IN NEW ENGLAND DESIGNED FOR EVERY CATEGORY OF ENGLISH LANGUAGE STUDENT

- **Parents of junior students:** experience a reassuring and scenic itinerary along the Rhode Island coast, with Newport and its historic mansions such as The Breakers and Marble House overlooking the Atlantic, or through the orderly and historic atmosphere of Portsmouth, New Hampshire, with its colonial center, wooden houses, and the old harbor of the Strawberry Banke Museum, where life in past centuries of New England is recreated.
- **Teenagers:** discover the more active and natural side of the region among the White Mountains of New Hampshire, with Franconia Notch State Park and the spectacular Flume Gorge, and the long beaches of Cape Cod, all the way to Provincetown, a remote village at the tip of the peninsula where the dunes of the Cape Cod National Seashore meet solitary lighthouses such as Race Point Lighthouse, in a landscape of open ocean and Atlantic winds.
- **University students:** experience a more cultural and independent journey between Boston and its museums, such as the Museum of Fine Arts and the Isabella Stewart Gardner Museum, continuing to Portland in Maine with its Old Port District, among historic warehouses and contemporary galleries, and up to Bar Harbor, gateway to Acadia National Park, where Cadillac Mountain, Jordan Pond, and the rugged coastline offer one of the most iconic natural landscapes in the United States.
- **Adults:** immerse themselves in a slow and refined journey through the villages of Vermont, such as Woodstock with its Middle Covered Bridge and Stowe at the foot of Mount Mansfield, among farms, tree-lined roads, and perfectly preserved rural landscapes, or along the Maine coast between Camden, with its natural harbor dominated by Mount Battie, and Kennebunkport, an elegant seaside town of white wooden houses and historic lighthouses such as Goat Island Light.
- **Professionals:** find a balanced itinerary between inspiration and rejuvenation, alternating the islands of Massachusetts such as Martha's Vineyard, with the villages of Edgartown and Oak Bluffs and their typical "gingerbread houses," and Nantucket with its cobblestone streets and the Whaling Museum, up to the coastal town of Mystic, Connecticut, where the Mystic Seaport Museum tells the maritime tradition of New England through historic sailing ships and restored harbors.





DID YOU KNOW?

In New England, the autumn “foliage” is not just a natural phenomenon, but a true collective calendar that attracts travellers from all over the world: between October and November, the scenic roads of Vermont, such as Route 100, turn into fiery corridors of red and gold, passing through towns like Stowe and Woodstock where time seems to have stood still.

In Boston, Boston Common is the oldest public park in the United States (1634) and is still used in winter for ice skating, just as it was centuries ago.

In Maine, the Portland Head Light lighthouse is one of the most photographed in America: commissioned by George Washington, it is still active and located in a scenic area within Fort Williams Park.

Also in Maine, some of the most rugged coastlines in the United States are found in the Acadia National Park area, where the easternmost point of the country, Cadillac Mountain, is one of the first places in the U.S. to see the sunrise every morning, attracting visitors who climb in the dark to witness dawn over the Atlantic.

In Vermont, maple syrup production is a true cultural tradition: the state produces about 40% of all maple syrup in the United States, and in spring many farms open their “sugar houses” to visitors to show the harvesting process.

In New Hampshire, the historic Mount Washington Cog Railway, opened in 1869 and the world’s first mountain-climbing cog railway, still takes visitors to the summit of Mount Washington, where some of the strongest winds ever recorded on Earth occur.

In Rhode Island, the city of Newport was for decades the summer retreat of America’s wealthiest families, and today the Gilded Age mansions such as The Breakers still tell the story of this opulent past.



SENTS THEREOF LEVANTION PROCLAIM
THE STATE HOUSE IN PHILADE BY ORDER

PASS AND SIGN
PHILADE
DOLLER

MID-ATLANTIC – ICONIC EAST COAST WHERE AMERICA BECAME A NATION



The Mid-Atlantic represents the symbolic and political heart of the United States, the place where America was not only born but took shape as a modern nation. It is here that the decisive pages of Independence were written, where founding documents were signed, and where the country's economic and institutional capitals arose. If New England is the beginning of the story, the Mid-Atlantic is the chapter where history becomes power, vision, and global identity. From the Declaration of Independence drafted in Philadelphia to the solemn monuments of Washington, from the Atlantic waves lapping the coasts of Delaware and Maryland to the iconic skyline of New York, the region holds the most recognizable essence of the American imagination. It is the America of great metropolises and historic cities, of perfectly preserved colonial neighborhoods and skyscrapers that have redefined the very concept of modernity. Culturally, the Mid-Atlantic is an extraordinary crossroads: English and Dutch colonial roots, European influence, an entrepreneurial spirit, artistic ferment, and political centrality coexist in dynamic balance. It is the land of monumental museums and elegant waterfronts, prestigious university campuses and institutional capitals, historic markets and scenic avenues that speak of ambition, progress, and diversity. Geographically, the region extends over 300,000 km², a surface area comparable to that of the entire central and northern Italy: in concrete terms, it is equivalent to the combined regions of Valle d'Aosta, Piedmont, Lombardy, Trentino-Alto Adige, Veneto, Friuli-Venezia Giulia, Liguria, Emilia-Romagna, Tuscany, Umbria, and Marche. This vast and diverse expanse encompasses large metropolises, Atlantic coasts, scenic bays, historic rivers, and vast rural areas, offering a surprising variety of landscapes within a single macro-region.

This complex space encompasses five states and a federal district:

- NEW YORK
- NEW JERSEY
- PENNSYLVANIA
- DELAWARE
- MARYLAND
- WASHINGTON, D.C.

In just a few hours of travel, you can travel from the vertical energy of Manhattan to the historic atmosphere of Philadelphia, from the elegant beaches of Delaware to the scenic bays of Maryland, and finally to the neoclassical monumentality of Washington. It's a region that combines ocean, majestic rivers, legendary skylines, and iconic cities with a concentration unique in the United States.

The main airports providing access to the region are:

- John F. Kennedy International Airport - In New York, the main intercontinental gateway
- Newark Liberty International Airport - In New Jersey, is strategic for the New York metropolitan area
- Philadelphia International Airport - Ideal for Pennsylvania and Delaware
- Baltimore e Washington International Airport - Convenient for Maryland and Washington, D.C.
- Ronald Reagan Washington National Airport - In the heart of the capital area

The Mid-Atlantic isn't just a geographical region: it's the iconic America, the one the world recognizes at first glance. It's the place where history and modernity coexist effortlessly, where every city has a distinct voice, and where every landscape—urban or coastal—speaks of ambition, freedom, and identity. It's the most symbolic, elegant, and scenic East Coast, perfect for those who want to experience America at its most powerful and memorable.

THE STUDY AND LANGUAGE IMMERSION EXPERIENCE IN ENGLISH IN THE MID-ATLANTIC

Studying English in the Mid-Atlantic region means experiencing education in the most international and dynamic core of the U.S. East Coast.

The main language schools are concentrated in the metropolitan area of New York City, where Manhattan represents one of the most immersive environments in the world for learning English, with iconic neighborhoods, multicultural settings, and a daily life that constantly exposes students to real-life language use. From Midtown and Lower Manhattan to Brooklyn, study is deeply intertwined with the urban rhythm of one of the most influential cities on the planet.

Washington, D.C. also offers a highly qualified linguistic environment, thanks to the presence of international institutions, universities, and a cosmopolitan setting that makes the U.S. capital particularly suitable for university students, adults, and professionals.

In Philadelphia, Pennsylvania, language schools operate in a city rich in history and academic tradition, where English is practiced in a more compact but highly stimulating cultural environment, among university campuses, historic libraries, and artistic neighborhoods.

Language programs and partner schools may also be available in other areas of the Mid-Atlantic region, depending on availability and the academic seasonality of the institutions.

A JOURNEY BEYOND THE LANGUAGE COURSE: AUTHENTIC EXPERIENCES AND DESTINATIONS IN THE MID-ATLANTIC DESIGNED FOR EVERY CATEGORY OF ENGLISH LANGUAGE STUDENT

- **Parents of junior students:** can experience the more elegant and relaxed side of the East Coast among the coastal towns of Maryland such as St. Michaels and Oxford, overlooking the Chesapeake Bay, where marinas, colonial houses, and crab restaurants reflect the most authentic maritime America, or discover Cape May in New Jersey, known for its pastel-colored Victorian homes, historic lighthouses, and quiet beaches far from more crowded seaside destinations.
- **Teenagers:** find dynamic experiences in the mountains of central Pennsylvania, with hiking trails and waterfalls at Ricketts Glen State Park, or along the Delaware coast between Rehoboth Beach and Lewes, where bike paths, ocean beaches, and small seaside towns offer a young and laid-back version of America, far from mass tourism.
- **University students:** can explore the more creative and alternative side of the region in Philadelphia's artistic neighborhoods such as Fishtown and Northern Liberties, filled with independent galleries and live music, or head to New York's Hudson Valley, to towns like Cold Spring and Beacon, where river landscapes meet contemporary cultural spaces such as Dia Beacon, one of the most important modern art museums in the United States.
- **Adults:** enjoy more refined itineraries through the Amish Country of Pennsylvania, around Lancaster, historic farms, and rural markets where time seems to slow down, or along the less known eastern shores of Maryland, with nature reserves, Atlantic lighthouses, and the untouched beaches of Assateague Island, famous for its wild horses roaming freely along the ocean.
- **Professionals:** find exclusive experiences between the sophisticated atmosphere of Georgetown in Washington, D.C., with its historic streets and federal residences, and the scenic routes of the Hudson Valley and Catskill Mountains, where boutique hotels, vineyards, historic inns, and towns such as Rhinebeck and Hudson offer a more intimate and authentic dimension of the American East Coast.





DID YOU KNOW?

In Maryland, the city of Annapolis is considered one of the nautical capitals of the United States: here you will find the U.S. Naval Academy, founded in 1845, still today a major training centre for the American Navy.

In New Jersey, the Atlantic City boardwalk is one of the oldest seaside promenades in the country, originally built in the 19th century to facilitate beach access and later becoming an icon of coastal tourism.

In Delaware, the smallest U.S. state, you will find Wilmington, the first colonial town founded by the Swedes in 1638, which still preserves traces of its original European architecture.

Beneath the streets of Manhattan, New York, there is a historic network of tunnels and abandoned stations: some old subway stops, such as the famous City Hall Station, can still be seen on special tours, featuring Beaux-Arts architecture preserved since the early 20th century.

In Annapolis, Maryland, the historic centre still maintains a gas-powered street lighting system in some streets, making it one of the few American cities where lamp maintenance still follows traditional manual procedures.

In New Jersey, along the Cape May coast, some of the original 19th-century Victorian houses have been restored and painted in bright colours: this town is considered one of the oldest seaside resorts in the United States and still preserves a nearly intact pre-modern urban layout.

In Pennsylvania, in the Hershey area, the town was literally built around a chocolate factory: even today many streets are named after cocoa and the company founded by Milton S. Hershey, making the urban centre a unique example of an still-active American company town.



SOUTHEAST – WHERE SOUTHERN HISTORY MEETS TIMELESS LANDSCAPES



The Southeast United States is a region rich in history, culture, and extraordinary landscapes. Originally inhabited by tribes such as the Cherokee, Creek, and Seminole, it preserves evidence of indigenous traditions, villages, and artifacts related to daily life and spiritual rituals. With the arrival of European settlers, the region became a crossroads of cultures, agricultural trade, and historic urban centers, creating iconic cities such as Charleston, Savannah, and Nashville, where music, architecture, and local traditions tell centuries of history. The natural landscape ranges from the coasts of Florida and the swamps of Louisiana to the hills of Tennessee and Kentucky, and the mountains of Virginia and North Carolina. Rivers, lakes, beaches, and forests offer ideal settings for hiking, walking, and outdoor activities, while historic villages and colonial homes allow you to immerse yourself in authentic Southern culture. The Southeast harmoniously combines nature, history, and culture, perfect for unique and unforgettable travel experiences. In terms of size and territorial diversity, this macro-area can be compared to a large portion of Italy: an area that, ideally, extends from Puglia and Calabria to Veneto and Piedmont, including regions such as Tuscany, Lazio, Umbria, and Emilia-Romagna.

The region comprises ten major states:

- VIRGINIA
- WEST VIRGINIA
- NORTH CAROLINA
- SOUTH CAROLINA
- GEORGIA
- FLORIDA
- ALABAMA
- MISSISSIPPI
- TENNESSEE
- KENTUCKY

The main airports providing access to the region are:

Hartsfield–Jackson Atlanta International – Main hub for Georgia and surrounding areas, with direct connections to all Southeast states

- **Charlotte Douglas International – Strategic gateway to North Carolina and South Carolina, with access to Virginia, Georgia, and Tennessee**
- **Orlando International – Gateway to Central and South Florida, with connections to Alabama and Mississippi**
- **Nashville International Airport – Ideal gateway to Tennessee and Kentucky, with flights and road connections to Virginia and West Virginia**
- **Birmingham-Shuttlesworth International – Gateway to Alabama, with easy access to Mississippi and North Florida**
- **Miami International – Ideal gateway to South Florida, with connections to islands and coastal destinations**

The Southeast offers a unique blend of history, culture, and nature. From the coasts of Florida to the mountains of Virginia and North Carolina, from the plains of Mississippi to historic and vibrant cities like Savannah and Charleston, this region offers authentic and memorable experiences. Perfect for a unique trip and an intense exploration of the American Southeast, the Southeast invites you to immerse yourself in breathtaking scenery, authentic traditions, and unforgettable moments, far from the conventional tourist routes.

THE STUDY AND LANGUAGE IMMERSION EXPERIENCE IN ENGLISH IN THE SOUTHEAST

Studying English in the Southeast of the United States means experiencing learning in one of the most authentic, diverse, and culturally rich regions of the country, where language schools are embedded in dynamic urban centers, historic towns, and landscapes of remarkable variety.

In Virginia, the main opportunities are concentrated around Richmond and Alexandria, where proximity to Washington, D.C. creates a strongly international linguistic environment. In North Carolina, cities such as Charlotte and Raleigh offer modern, fast-growing settings, with schools located in young and highly liveable urban areas, while in South Carolina, Charleston stands out as a key destination for language programs in a historic and coastal setting of great charm. In Georgia, Atlanta serves as one of the main educational and international hubs of the South, with English schools immersed in a multicultural and rapidly evolving metropolis. In Florida, language study unfolds between Miami, Orlando, and Fort Lauderdale, where a strong international and Latin American presence creates a unique, constantly active, and highly practical linguistic environment. In Tennessee, Nashville and Memphis offer dynamic urban contexts deeply connected to American music culture, while in Kentucky, cities such as Louisville provide a more compact but authentically American experience. Even in Alabama and Mississippi, selected language programs take place in cities like Birmingham and Jackson, where English is learned in more traditional, everyday environments, far from major tourist flows.

A JOURNEY BEYOND THE LANGUAGE COURSE: AUTHENTIC EXPERIENCES AND DESTINATIONS IN THE SOUTHEAST DESIGNED FOR EVERY CATEGORY OF ENGLISH LANGUAGE STUDENT

- **Parents of junior students:** enjoy a calm and scenic itinerary along the South Carolina coast, between the historic atmosphere of Charleston, with its Waterfront Park and colonial mansions of the French Quarter, and the protected beaches of Hilton Head Island, where nature, the sea, and small coastal villages offer a safe and relaxing environment.
- **Teenagers:** discover the more natural and adventurous side of the region in the Smoky Mountains, between Tennessee and North Carolina, with scenic trails such as Clingmans Dome and waterfalls immersed in the forest, or along the Florida coast between the Florida Keys and Key Largo, where ocean-spanning bridges and marine parks like John Pennekamp Coral Reef State Park offer experiences between sea and tropical nature.
- **University students:** experience a more urban and creative Southeast between Atlanta and its emerging districts such as Midtown and Little Five Points, rich in street art, music, and independent culture, or in Nashville along Broadway and the Country Music Hall of Fame, continuing to Memphis with Beale Street and the National Civil Rights Museum, where music and history intertwine in a unique way.
- **Adults:** can explore the cultural depth of Kentucky between Lexington and the historic distilleries of the Bourbon Trail, set among green hills and rural traditions, or the slower and more refined side of Georgia between Savannah and its tree-lined squares, such as Forsyth Park and River Street, where time seems to flow at a completely different pace.
- **Professionals:** find high-level experiences between Miami and its Design District, with contemporary galleries and iconic architecture such as the Pérez Art Museum, or in Virginia cities like Williamsburg, where the Colonial National Historical Park and historic reenactments create a unique environment of learning, reflection, and immersion into American history.





DID YOU KNOW?

In North Carolina, the first powered flight in history took place in Kitty Hawk in 1903, when the Wright brothers managed to take off with a heavier-than-air aircraft on the Atlantic coast.

In Memphis, Beale Street is considered one of the most important streets in American blues music: artists such as B.B. King performed here as early as the 1940s, and today some venues still host live performances every night without interruption.

In Georgia, in Atlanta, the World of Coca-Cola displays historic formulas and original items from the brand, which was founded here in 1886, when the beverage was initially sold as a pharmacy tonic.

In Florida, the Kennedy Space Center is still one of NASA's main launch sites: from Cape Canaveral, the Apollo missions took off, and today some historic launch pads can still be visited along the Atlantic coast.

In South Carolina, the city of Charleston preserves one of the best-preserved historic centres in the United States, with cobblestone streets and Rainbow Row, a series of pastel-coloured houses dating back to the 18th century.

In the Appalachians, between Tennessee and North Carolina, one of the oldest musical traditions in the United States exists: bluegrass, born from the encounter between European and African musical influences, still played today at small local mountain festivals.

In Alabama, in Montgomery, there are some of the key sites of the Civil Rights Movement, including the church where Martin Luther King Jr. led some of the first non-violent protests.



STATE STREET

MIDWEST – WHERE HISTORY, CULTURE, AND NATURE MEET TO CREATE UNIQUE EXPERIENCES



The Midwest of the United States is the beating heart of the United States, a region where history, culture, and nature intertwine in extraordinary ways. Originally inhabited by tribes such as the Sioux, Ojibwe, Potawatomi, and Miami, the region preserves evidence of indigenous life tied to hunting, fishing, and traditional agriculture, with archaeological sites and ancient villages that still tell the story of these communities. With the arrival of European settlers between the 17th and 19th centuries, the Midwest transformed into a crossroads of cultures and innovations: German, Irish, Scandinavian, and Dutch settlements brought with them architectural, artisanal, and gastronomic traditions that are still evident today in historic cities and towns. Cities such as Chicago, Detroit, and St. Louis bear witness to the region's industrial and cultural strength, while the Great Plains, the Mississippi and Missouri rivers, lakes such as the Great Lakes, and the northern forests offer perfect settings for hiking, trekking, biking, and moments of complete immersion in nature. The Midwest, with its balance of vibrant urban areas, picturesque villages, and pristine landscapes, is an ideal destination for those seeking authentic and memorable experiences, far from conventional tourist routes. In terms of size and geographical configuration, this macro-region can be compared to much of Northern Italy: a territory whose characteristics recall those of regions such as Lombardy, Veneto, Emilia-Romagna, and Piedmont.

The region comprises eight main states:

- OHIO
- MICHIGAN
- INDIANA
- ILLINOIS
- WISCONSIN
- MINNESOTA
- IOWA
- MISSOURI

The main airports providing access to the region are:

- Chicago O'Hare International – Provides easy access to Illinois, Wisconsin, and Missouri, also connecting to domestic flights to Ohio, Indiana, and Minnesota
- Detroit Metropolitan Airport – Ideal hub for access to Michigan and Ohio, with excellent rail and road connections to Indiana and Illinois
- Minneapolis–Saint Paul International – Gateway to Minnesota and Iowa, with domestic flights also providing easy access to Wisconsin and Illinois
- St. Louis Lambert International – Accessible to Missouri and Illinois, with good road connections to Iowa and Indiana
- Cleveland Hopkins International – Strategic gateway to Ohio and Michigan, with easy travel to Indiana and Illinois

The Midwest offers a unique mix of vibrant cities, picturesque villages, and breathtaking natural scenery. From the Great Lakes to the northern forests, from culturally rich industrial cities to pristine plains, this region offers authentic experiences, adventures, and intimate moments—perfect for an experience that celebrates the beauty and diversity of America's heartland. Immersing yourself in the Midwest means discovering an America less traveled, where history, culture, and nature meet in harmony.

THE STUDY AND LANGUAGE IMMERSION EXPERIENCE IN ENGLISH IN THE MIDWEST

Studying English in the Midwest of the United States means experiencing an authentic and deeply American journey, in a region defined by major dynamic cities, outstanding university campuses, and a more balanced pace of life compared to the coasts.

The main study opportunities are concentrated in Chicago, Illinois, one of the country's most important educational hubs, where English schools are set within an international urban context across the Loop, River North, and the areas along Lake Michigan, offering continuous immersion in the language within a modern and multicultural metropolitan environment. In Minneapolis–Saint Paul, Minnesota, English study takes place in an orderly, green, and highly livable setting, with strong connections to universities, cultural institutions, and a growing international community. In Ohio, cities such as Columbus and Cleveland offer accessible and highly authentic urban environments, where English is practiced daily in real-life contexts far from mass tourism. In Detroit, Michigan, the language learning experience is embedded in a city that symbolizes urban transformation and cultural revival, while in Indianapolis, Indiana, and St. Louis, Missouri, study takes place in more compact but deeply rooted American everyday environments. Milwaukee, Wisconsin, and parts of Iowa further complete the picture of a region where language learning develops naturally through direct contact with local life.

A JOURNEY BEYOND THE LANGUAGE COURSE: AUTHENTIC EXPERIENCES AND DESTINATIONS IN THE MIDWEST DESIGNED FOR EVERY CATEGORY OF ENGLISH LANGUAGE STUDENT

- **Parents of junior students:** can enjoy a reassuring and natural Midwest experience along the shores of Lake Michigan, with Chicago's urban beaches such as North Avenue Beach and walks through Millennium Park, or explore the peaceful atmosphere of Wisconsin Dells, among rivers, sandstone canyons, and natural parks such as Mirror Lake State Park, where nature and safety blend into an ideal setting.
- **Teenagers:** discover a landscape shaped by nature and adventure across the Great Lakes, with excursions to Pictured Rocks National Lakeshore in Michigan, featuring colorful cliffs and the turquoise waters of Lake Superior, or into the forests of Hocking Hills State Park in Ohio, among caves, waterfalls, and trails immersed in wild nature.
- **University students:** experience the more urban and creative Midwest between Chicago and its neighborhoods such as Wicker Park and Lincoln Park, rich in live music, street art, and independent culture, or in Minneapolis in the North Loop and along the Mississippi riverfront, continuing to St. Louis with the Gateway Arch and cultural districts along the Mississippi, where history and modernity meet.
- **Adults:** can immerse themselves in more relaxed itineraries through the hills and vineyards of Missouri Wine Country, along the Missouri River Valley with historic towns such as Hermann, or among the inland islands and shores of Lake Superior in Minnesota, with locations such as Duluth and Split Rock Lighthouse, where nature and silence define the travel experience.
- **Professionals:** find valuable experiences between Chicago and its financial district, the Loop, with iconic architecture such as the Willis Tower and the Chicago Riverwalk, or in transforming cities like Detroit, with its cultural Midtown and the Detroit Institute of Arts, and in Columbus, where innovation, universities, and urban regeneration create a dynamic and contemporary environment.





DID YOU KNOW?

In Chicago, the first modern skyscraper in history was built in 1885: the Home Insurance Building, now demolished, marked the beginning of vertical architecture that transformed cities around the world.

Also in Chicago, the river was artificially reversed in 1900: a unique engineering feat designed to prevent wastewater from flowing into Lake Michigan, the city's main source of drinking water.

In Michigan, the city of Detroit was the centre of the global automotive industry: the Ford Model T, produced here from 1908, changed the way Americans lived by making the automobile a mass-market product.

In Minnesota, the Mall of America is one of the largest shopping centres in the world, but few know that it also contains a full amusement park with roller coasters operating year-round.

In Wisconsin, dairy farming is so deeply rooted that the state is known as "America's Dairyland": some small towns still host dairy cooperatives that have been active for over a century.

In Ohio, the city of Cleveland hosted the first regular radio broadcast in American history in 1920, marking the beginning of the mass communication era.



SOUTH CENTRAL – A REGION RICH IN HISTORY, CULTURE AND UNFORGETTABLE LANDSCAPES



The South Central United States is a region that blends spectacular natural landscapes, rich history, and authentic culture. Originally inhabited by tribes such as the Choctaw, Chickasaw, and Caddo, this area preserves evidence of indigenous traditions related to hunting, agriculture, and life along the great rivers. With the arrival of European settlers and the westward migration between the 17th and 19th centuries, the South Central states became agricultural, commercial, and cultural centers, giving rise to iconic cities and picturesque villages that still tell stories of pioneers, plantations, and river markets. From the plains of Texas and Oklahoma, to the swamps and bayous of Louisiana, to the woodlands of Arkansas, the region offers diverse landscapes ranging from pristine natural environments to urban centers rich in tradition and modernity. This combination of history, culture, and nature makes the South Central an ideal destination for those wishing to explore an authentic America, far from mass tourism, on a journey that combines adventure and discovery. In terms of size and territorial variety, this macro-area can be compared to a large portion of central-southern Italy: a territory that, ideally, recalls regions such as Lazio, Campania, Puglia, and Sicily.

The region comprises four main states:

- OKLAHOMA
- ARKANSAS
- LOUISIANA
- TEXAS

The main airports providing access to the region are:

- Dallas/Fort Worth International – Major hub for Texas and Oklahoma, with excellent road and air connections to Arkansas and Louisiana
- Louis Armstrong New Orleans International – Prime gateway to Louisiana, with easy access to Arkansas and East Texas as well
- Little Rock National Airport – Strategically located for reaching Arkansas, with efficient connections to East Texas and North Louisiana
- Will Rogers World Airport – Ideal for Oklahoma, with direct access to neighboring Texas and Arkansas

The South Central combines vast natural spaces, cities rich in history and culture, and evocative landscapes. From the plains of Texas to the bayous of Louisiana, from the woods of Arkansas to the rural landscapes of Oklahoma, this region offers unforgettable experiences, moments of relaxation, and unique adventures. Perfect for those seeking a journey off the beaten path, the South Central offers the charm of an authentic and surprising America.

THE STUDY AND LANGUAGE IMMERSION EXPERIENCE IN ENGLISH IN THE SOUTH CENTRAL

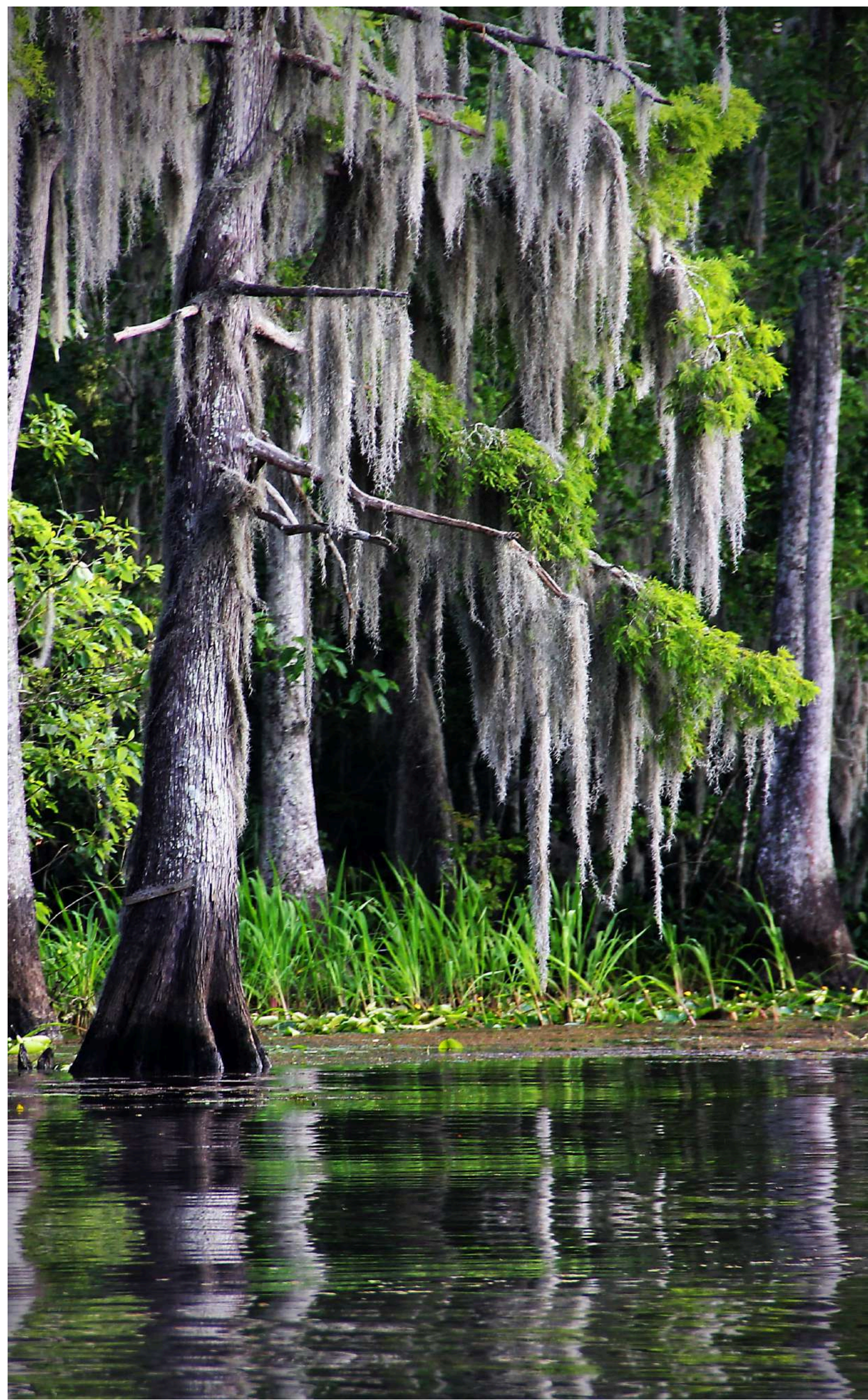
Studying English in the South Central United States means living the language in an authentic and pragmatic context, where major cities offer real study opportunities thanks to language schools, colleges, and international programs.

The main destinations with a well-established educational offer include Texas, particularly Houston, Dallas, Austin, and San Antonio—dynamic and multicultural cities with a strong presence of language institutions and academic centers. Here, English is practiced daily in real-life settings, among universities, international districts, coworking spaces, and cultural activities. In Louisiana, New Orleans represents another important hub, where some language schools operate in a strongly distinctive environment shaped by Creole culture, music, and urban life. In Arkansas, the offer is more limited and mainly concentrated in the Little Rock area, with more compact programs integrated into the local educational fabric.

It is a region of the United States where English learning takes place in a direct, concrete, and immersive way—far from major tourist circuits but close to everyday American life.

A JOURNEY BEYOND THE LANGUAGE COURSE: AUTHENTIC EXPERIENCES AND DESTINATIONS IN THE SOUTH CENTRAL DESIGNED FOR EVERY CATEGORY OF ENGLISH LANGUAGE STUDENT

- **Parents of junior students:** Houston opens up through less touristy but highly meaningful educational spaces such as the Houston Museum of Natural Science in Hermann Park, with its fossil and space exhibits, and the Miller Outdoor Theatre, where free outdoor performances allow families to experience the city safely and authentically, immersed in local everyday life.
- **Teenagers:** New Orleans reveals its truer side beyond the French Quarter, among the historic houses of Treme, one of the oldest musical neighborhoods in the United States, and along the banks of Bayou St. John, where the city opens into a slower, more natural dimension, far from main tourist routes but deeply connected to its cultural identity.
- **University students:** Austin is experienced beyond South Congress, exploring the trails of the Lady Bird Lake Hike-and-Bike Trail and creative districts such as East Austin, where murals, independent spaces, and hidden venues reflect a constantly evolving city, far more authentic than its better-known central areas.
- **Adults:** the rural Texas of the Hill Country becomes the focus, with towns such as Johnson City and Wimberley, among local markets, independent art galleries, and rolling landscapes dotted with natural rivers such as Blue Hole Regional Park, a place mainly frequented by locals.
- **Professionals:** between Houston and Dallas, a less conventional Texas emerges through areas such as Buffalo Bayou Park, with its riverside trails and urban installations, and revitalized historic districts like Deep Ellum in Dallas, where street art, live music, and small creative businesses reveal an alternative cultural and economic layer beyond the main financial centers.





DID YOU KNOW?

In Texas, in Houston, the Johnson Space Center is the operational heart of NASA for many space missions: from here communication with astronauts in orbit is coordinated through the famous “Mission Control,” still used today for international missions.

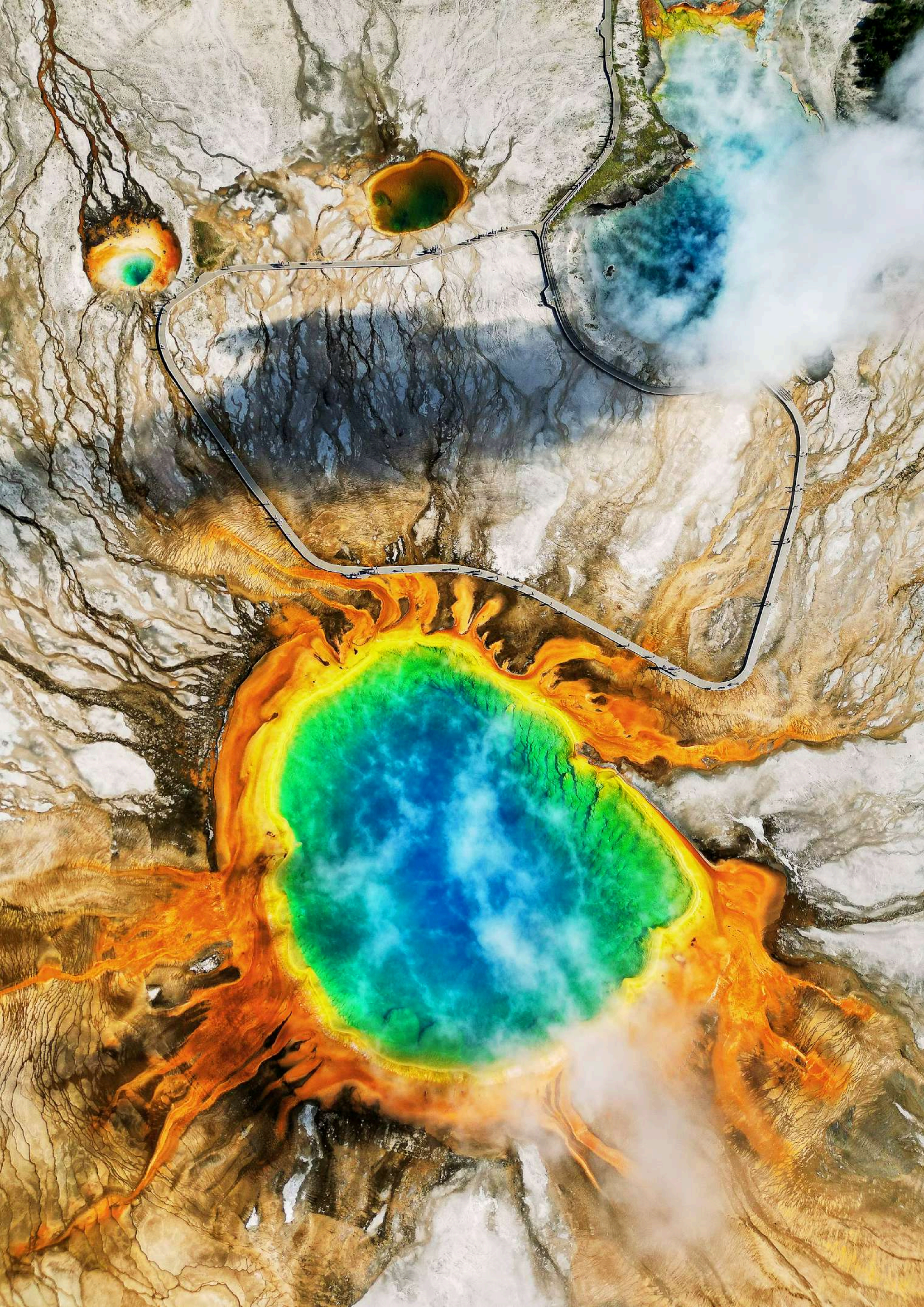
Also in Texas, the city of San Antonio preserves the Alamo, a small Spanish mission that became a symbol of Texan resistance in 1836, now visited as one of the state’s most important historical sites.

In Louisiana, in Baton Rouge and along the Mississippi River, many 19th-century plantations are still open to visitors, such as Oak Alley Plantation, famous for its avenue of centuries-old oak trees leading to the main house.

In New Orleans, in the French Quarter, streets such as Royal Street still preserve original wrought-iron balconies from the French and Spanish colonial period, with buildings dating back to the 18th century.

In Oklahoma, along the historic Route 66, cities such as Tulsa and Oklahoma City still preserve original diners, restored neon signs, and historic motels that recall the era of America’s great road trips.

In Arkansas, Hot Springs National Park is unique because it is located directly within a city: the thermal springs were already used by Native peoples long before the birth of the modern United States.



ROCKY MOUNTAINS – NORTHERN PLAINS - WHERE ADVENTURE, PRISTINE NATURE AND PIONEER STORIES BLEND INTO EXTRAORDINARY EXPERIENCES



The Rocky Mountains and Northern Plains region is a fascinating territory for its immense variety of landscapes and profound history. Originally inhabited by tribes such as the Lakota, Crow, Cheyenne, and Mandan, it preserves evidence of indigenous cultures linked to hunting, fishing, and the nomadic life of the great prairies. With the westward expansion of European settlers and the epic of 19th-century pioneers, the region became the scene of exploration, fur trading, and historic battles, which have left their mark in historic forts, villages, and trails. Landscapes range from the spectacular peaks of the Rocky Mountains to the canyons and unique geological formations of Utah and Colorado, passing through the vast plains of Nebraska, Kansas, and the Dakotas. Rushing rivers, crystal-clear lakes, and pristine forests offer an ideal natural setting for hiking, trekking, rafting, and moments of total immersion in unspoiled nature. This macro-region combines adventure, history, culture, and breathtaking scenery, perfect for those seeking authentic experiences away from the traditional tourist routes. In size, this macro-area can be compared to almost half of northern and central Italy, including territories equivalent to Piedmont, Lombardy, Trentino-Alto Adige, Veneto, Emilia-Romagna and part of Tuscany.

The region comprises nine main states:

- NORTH DAKOTA
- SOUTH DAKOTA
- NEBRASKA
- KANSAS
- MONTANA
- WYOMING
- COLORADO
- IDAHO
- UTAH

The main airports providing access to the region are:

- Denver International Airport – Main hub for Colorado and Wyoming, with flights and road connections to Montana, Utah, and the Northern Plains
- Salt Lake City International Airport – Ideal gateway to Utah and Idaho, with connections to Montana, Wyoming, and western Colorado
- Billings Logan International Airport – Strategically located for Montana and eastern Wyoming, with easy access to surrounding rural areas and national parks
- Rapid City Regional Airport – Gateway to South Dakota and North Dakota, perfect for visiting the Black Hills and the wide-open spaces of the Northern Plains
- Kansas City International Airport – Offers access to Kansas, Nebraska and northern Missouri, with efficient connections to the Dakotas and eastern Colorado

The Rocky Mountains and Northern Plains region offers spectacular landscapes, picturesque cities, and vast natural spaces, ideal for those seeking a unique travel experience. From towering mountains to endless prairies, from evocative canyons to crystal-clear lakes, this area offers unique adventures, moments of relaxation immersed in nature, and perfect views for unforgettable experiences. Exploring these lands means immersing yourself in an authentic America, full of wild beauty and extraordinary stories.

THE STUDY AND LANGUAGE IMMERSION EXPERIENCE IN ENGLISH IN THE ROCKY MOUNTAINS AND NORTHERN PLAINS

Studying English in the Rocky Mountains and Northern Plains region offers a more intimate, natural learning environment closely connected to everyday local life.

The main study opportunities are concentrated in Colorado, particularly in Denver, a dynamic and rapidly growing international city where language schools, academic programs, and university environments allow for constant use of English in real-world contexts. Boulder, a university town at the foot of the mountains, also offers a highly formative and immersive environment. In Utah, the Salt Lake City area provides additional opportunities linked to educational institutions and language programs set within an orderly, safe, and strongly structured academic environment. The broader region—including Wyoming, Montana, Nebraska, the Dakotas, Kansas, and Idaho—represents a more authentic and less urbanized America, where English is experienced through daily local life rather than large international language networks, offering a deeper but less formally “classroom-based” cultural immersion.

A JOURNEY BEYOND THE LANGUAGE COURSE: AUTHENTIC EXPERIENCES AND DESTINATIONS IN THE ROCKY MOUNTAINS AND NORTHERN PLAINS DESIGNED FOR EVERY CATEGORY OF ENGLISH LANGUAGE STUDENT

- **Parents of junior students:** Denver offers a balanced and safe environment with the Denver Museum of Nature & Science, located in City Park, where exhibitions on space, dinosaurs, and natural sciences are paired with the nearby Denver Botanic Gardens, an urban botanical garden that provides an educational experience immersed in nature without leaving the city.
- **Teenagers:** the journey extends into Wyoming, between Grand Teton National Park, with its jagged peaks reflected in crystal-clear lakes such as Jackson Lake, and Yellowstone National Park, where spectacular geysers like Old Faithful and deep canyons create a truly unique natural landscape.
- **University students:** the heart of the Rockies is experienced between Boulder and Estes Park, along trails such as the Flatirons Trail and the access points to Rocky Mountain National Park, where alpine lakes, conifer forests, and high elevations offer an intense and deeply formative outdoor experience.
- **Adults:** the journey moves into Montana, between Bozeman, a lively town at the foot of the mountains, and Glacier National Park, crossed by the scenic Going-to-the-Sun Road, where glaciers, turquoise lakes such as Lake McDonald, and remote valleys reflect an untouched natural world.
- **Professionals:** the route focuses on Denver and Salt Lake City, with extensions to Park City, a mountain destination in Utah known for its quality of life and international events, and to Colorado alpine areas such as Aspen and Vail, where high-end tourism, innovation, and networking integrate within an exclusive yet authentic setting.





DID YOU KNOW?

In Colorado, Rocky Mountain National Park is home to some of the highest scenic roads in the United States, such as Trail Ridge Road, which rises above 3,700 metres and crosses environments where the air is so thin that vegetation changes completely within just a few kilometres.

In Yellowstone, spanning Wyoming, Montana, and Idaho, lies the world's largest geyser system: Old Faithful has been erupting at regular intervals for over a century and has become one of the most predictable natural phenomena on the planet.

In South Dakota, Mount Rushmore depicts the faces of four American presidents carved into granite rock, but few know that the original project also envisioned full-body figures extending across the entire mountain.

In North Dakota, the Badlands reveal one of the oldest and most layered landscapes in the United States, with canyons and colourful rock formations that formed millions of years ago and are still eroding today.

In Nebraska, the city of Omaha has become one of the Midwest's most important economic centres thanks to the presence of Berkshire Hathaway, led for decades by Warren Buffett, one of the world's most influential financial figures.

In Kansas, the Great Plains are characterised by such vast flatlands that in some areas the horizon appears completely uninterrupted for tens of kilometres.

In Montana, Glacier National Park still preserves glaciers and turquoise alpine lakes, but many of these glaciers are in slow retreat, making the landscape constantly change.

In Wyoming, Grand Teton National Park offers one of the most photographed mountain profiles in the United States, with peaks rising abruptly from the plains without intermediate foothills.

In Idaho, Shoshone Falls on the Snake River is higher than Niagara Falls, yet less well known, which is why it is often called the "Niagara of the West."

In Utah, Bryce Canyon is famous for its rock formations called "hoodoos," natural pillars shaped by wind and ice that create a surreal landscape.



SOUTHWEST – A JOURNEY THROUGH THE UNIQUE SCENERY AND AUTHENTIC TRADITIONS OF THE DEEP AMERICAN SOUTHWEST



The Southwest United States is an extraordinary region, where endless deserts, spectacular canyons, and ancient cultures meet to create a unique experience. Originally inhabited by tribes such as the Navajo, Hopi, Apache, and Pueblo, the area preserves evidence of indigenous architecture, rock art, and spiritual traditions that are still alive in local villages and communities. The arrival of Spanish settlers between the 16th and 18th centuries brought missions, forts, and settlements that left historical traces in Santa Fe, Albuquerque, and Tucson. The natural formations of the Grand Canyon, Monument Valley, and the national parks of Arizona and New Mexico, along with the deserts of Nevada, offer spectacular scenery, perfect for hiking, horseback riding, sunset photography, and intimate moments among the red rocks and expansive plains. This large area blends adventure, ancient culture, and iconic landscapes, making it ideal for those seeking authentic experiences off the beaten path. In terms of size and variety of landscapes, this macro-area can be compared to a large portion of Southern and Central-Southern Italy, including regions such as Sicily, Calabria, Puglia, Basilicata and part of Campania.

The region comprises three main states:

- ARIZONA
- NEW MEXICO
- NEVADA

The main airports providing access to the region are:

- Phoenix Sky Harbor International Airport – Main hub for Arizona and New Mexico, with road and flight connections to the region's natural attractions and historic cities
- Albuquerque International Sunport – Ideal for New Mexico, with easy access to historic villages and nature parks in the Southwest
- McCarran International Airport – Gateway to Nevada, with easy access to Las Vegas, Red Rock Canyon and the surrounding deserts
- Tucson International Airport – Strategic gateway to southern Arizona and excursions to the southwestern national parks

The Southwest offers a unique sensory experience amidst desert landscapes, breathtaking canyons, and cities steeped in centuries of history. From ancestral communities to sunsets over the red rocks, from endless deserts to scenic drives, this region offers unique adventures and the chance to discover an America far from the beaten path. Exploring the Southwest means immersing yourself in a world of beauty, culture, and authentic charm, perfect for an unforgettable trip.

THE STUDY AND LANGUAGE IMMERSION EXPERIENCE IN ENGLISH IN THE SOUTHWEST

Studying English in the Southwest means experiencing the language in one of the most iconic and visually distinctive regions of the United States, where desert landscapes, modern cities, and Native American and Hispanic cultural influences intertwine in a unique way.

The main study opportunities are concentrated in Arizona, particularly in Phoenix, one of the country's most dynamic and fast-growing urban areas, where language schools and international programs provide constant English immersion among modern neighborhoods, university centers, and a strong international student presence. Nearby Scottsdale also offers a more compact but highly structured environment, with quality educational settings and an orderly residential atmosphere. In Nevada, Las Vegas represents another significant destination: beyond its touristic image, the city hosts language institutions and academic programs embedded in a highly international context, where English is practiced daily in urban, educational, and professional environments. New Mexico, with cities such as Albuquerque and Santa Fe, is not a major language hub in a strict sense, but it offers an extremely authentic cultural setting, where English is lived in a slower, more rooted dimension, among Native traditions, adobe architecture, and a strong local identity.

A JOURNEY BEYOND THE LANGUAGE COURSE: AUTHENTIC EXPERIENCES AND DESTINATIONS IN THE SOUTHWEST DESIGNED FOR EVERY CATEGORY OF ENGLISH LANGUAGE STUDENT

- **Parents of junior students:** Phoenix offers a safe and well-organized starting point, with the Desert Botanical Garden, where trails surrounded by ancient cacti and desert plants present Arizona's ecosystem in an educational and accessible way, and the Heard Museum, dedicated to Native American cultures.
- **Teenagers:** the experience extends toward the Grand Canyon South Rim, accessible from Flagstaff, where viewpoints such as Mather Point and Desert View Watchtower offer one of the most striking natural landscapes on Earth, while along the route historic Route 66 towns such as Williams still preserve the atmosphere of the Old West.
- **University students:** the journey focuses on Sedona and the central Arizona desert, with rock formations such as Cathedral Rock and Bell Rock, hiking trails immersed in nature, and an atmosphere that blends spirituality, outdoor life, and alternative culture in one of the most distinctive regions of the country.
- **Adults:** New Mexico offers a more cultural and reflective extension, between Santa Fe Plaza, with its art galleries and adobe architecture, and Bandelier National Monument, where ancient cliff dwellings carved into the rock tell the story of Native civilizations in a remarkable natural setting.
- **Professionals:** the route develops between Las Vegas and the desert areas of Nevada, with extensions to the Hoover Dam, one of the most impressive engineering feats in the United States, and to the city's resort and convention districts, where business, international events, and networking intersect in a highly dynamic and global environment.





DID YOU KNOW?

In Arizona, the Grand Canyon is not only one of the most famous natural wonders in the world: its rock layers tell nearly two billion years of geological history, visible like an open book carved by the Colorado River.

Also in Arizona, Route 66 crosses towns such as Seligman and Williams, where original diners, vintage neon signs, and restored motels still preserve the atmosphere of the great American road trip of the twentieth century.

In Nevada, Las Vegas was built in the middle of the Mojave Desert, and much of its growth began only after the construction of the Hoover Dam, one of the most impressive engineering works in the United States, located on the border with Arizona.

In Las Vegas, many of the most iconic structures are monumental replicas: from the Eiffel Tower at Paris Las Vegas to the pyramids of the Luxor, the city has become a contemporary museum of architectural imagination.

In New Mexico, Santa Fe is one of the oldest capitals in the United States and preserves a historic centre built in adobe, with earth-built structures that still follow the architectural style of Native peoples and the Spanish colonial period.

Also in New Mexico, the Carlsbad Caverns form a vast underground cave system, with natural chambers as tall as cathedrals, shaped over millions of years by water and limestone.

In Nevada, in the northern desert of Nevada, lies Area 51, a highly restricted military base that has become one of the most enigmatic places in the world. For decades it has been associated with experimental aerospace projects and a level of secrecy that has fuelled stories, theories, and global popular imagination. The area is completely surrounded by desert terrain and access restrictions, contributing to its mysterious and iconic status in the contemporary American landscape.



PACIFIC COAST – FROM WILD NATURE TO COSMOPOLITAN CITIES, A JOURNEY OF DISCOVERY AND ADVENTURE



The Pacific Coast of the United States is a region that combines spectacular natural scenery with iconic, vibrant cities. Originally inhabited by tribes such as the Chinook, Coast Salish, and Chumash, it preserves traces of indigenous life linked to fishing, forests, and the Pacific Ocean coast. With the arrival of European settlers and gold prospectors in the 19th century, coastal cities grew rapidly, becoming cultural, commercial, and innovative centers. The region offers a unique mix of landscapes: from the cliffs and rainforests of Northern Washington, to the volcanoes and lakes of Oregon, to the beaches, vineyards, and iconic cities of California. National parks such as Redwood, Crater Lake, and Yosemite, along with the rugged coastline, offer spectacular views, scenic hikes, and opportunities to immerse yourself in nature. The Pacific Coast harmoniously combines culture, history, and nature, perfect for those seeking adventurous experiences off the beaten path. In terms of size and variety of landscapes, this macro-area can be compared to a large stretch of western Italy, including territories equivalent to Piedmont, Liguria, Tuscany, Emilia-Romagna, Marche and Lazio.

The region comprises three main states:

- WASHINGTON
- OREGON
- CALIFORNIA

The main airports providing access to the region are:

- Seattle-Tacoma International Airport – Main hub for Washington, with connections to nature hikes, rainforests, and historic cities of the Northwest
- Portland International Airport – Ideal gateway to Oregon, with access to forests, volcanoes, coasts, and national parks
- San Francisco International Airport – Strategic hub for Northern and Central California, with connections to iconic cities, vineyards and nature parks
- Los Angeles International Airport – The main gateway to Southern California, with easy access to beaches, nearby deserts, and urban attractions
- San Diego International Airport – Gateway to Southern California, ideal for beaches, culture, and relaxation along the Pacific Coast

The Pacific Coast offers an experience that combines cosmopolitan cities, spectacular coastlines, and pristine natural scenery. From the rainforests of Washington to the volcanoes and lakes of Oregon, to the golden beaches and vineyards of California, this region offers unforgettable adventures and a variety of authentic experiences. Exploring the Pacific Coast means immersing yourself in an extraordinary America, where culture, history, and nature blend to create unique memories.

THE STUDY AND LANGUAGE IMMERSION EXPERIENCE IN ENGLISH ON THE PACIFIC COAST

Studying English on the Pacific Coast means entering one of the most dynamic and international linguistic ecosystems in the United States, where major cities, technological innovation, and contemporary lifestyles create an ideal environment for natural and continuous language learning.

In California, the main opportunities are concentrated between Los Angeles, San Diego, and San Francisco, cities where language schools, universities, and international programs are integrated into highly multicultural urban environments. In Los Angeles, English is experienced among iconic neighborhoods such as Santa Monica and Downtown Los Angeles; in San Diego, within a more relaxed coastal setting; while San Francisco offers a strongly international atmosphere linked to the academic and technological world of the Bay Area.

In Washington State, Seattle represents the main linguistic and academic hub, a city surrounded by ocean and forests, where the presence of universities and global companies creates an ideal environment for the constant and practical use of English.

In Oregon, Portland offers a more compact yet highly creative and university-oriented environment, with a strong international student presence and an urban fabric that encourages everyday interaction in English.

A JOURNEY BEYOND THE LANGUAGE COURSE: AUTHENTIC EXPERIENCES AND DESTINATIONS ON THE PACIFIC COAST DESIGNED FOR EVERY CATEGORY OF ENGLISH LANGUAGE STUDENT

- **Parents of junior students:** San Diego offers a safe and relaxed extension between Balboa Park, a vast cultural complex with museums and botanical gardens, and Old Town San Diego State Historic Park, where reconstructed Mexican colonial architecture tells the story of California's origins in an educational and accessible setting.
- **Teenagers:** central and northern California unfold along the Pacific Coast Highway, between coastal towns such as Santa Barbara, with its historic missions and orderly beaches, and Monterey, where the Monterey Bay Aquarium and the 17-Mile Drive offer direct contact with the ocean and marine wildlife.
- **University students:** the experience focuses on the Bay Area, between Berkeley and Stanford, home to some of the world's most prestigious university campuses, and small towns such as Sausalito, overlooking San Francisco Bay, where art, innovation, and coastal living blend seamlessly together.
- **Adults:** the journey develops through the forests of Oregon, with the Columbia River Gorge, the waterfalls of Multnomah Falls, and the wild landscapes of the Oregon Coast Highway, among small villages such as Cannon Beach and ocean scenery still largely untouched by mass tourism.
- **Professionals:** the coast becomes a strategic axis between Seattle and San Francisco, with extensions to Silicon Valley's technology district, Seattle's revitalized waterfronts such as Pike Place Market and South Lake Union, and the business districts of Los Angeles, where innovation, finance, and the creative industries intersect within a high-level international environment.





DID YOU KNOW?

In Washington, Olympic National Park is one of the few places in the United States where you can move in just a few hours from temperate rainforests to wild ocean coastlines, with completely different ecosystems concentrated within the same territory.

In Seattle, the Space Needle was built for the 1962 World's Fair and for decades remained the city's symbol, but few know that its design was meant to represent the idea of a "spaceship projected into the future."

Also in Washington State, the San Juan Islands are an archipelago where it is possible to observe orcas in their natural habitat, especially in the channels between Orcas Island and San Juan Island.

In Oregon, Crater Lake is the deepest lake in the United States and formed inside an ancient collapsed volcano: its water is so pure and deep that it appears in a striking, almost uniform deep blue.

In Portland, the city is crossed by the Willamette River and is famous for its historic bridges, including the Steel Bridge, one of the few double-deck bridges still in operation in the world.

In California, Highway 1 along the Pacific coast is considered one of the most spectacular scenic roads on the planet, with stretches such as Big Sur where cliffs drop hundreds of metres straight into the ocean.

Also in California, Silicon Valley between San Jose and Palo Alto has become the global centre of technological innovation, home to some of the most influential companies in the history of the digital age.

In San Francisco, the Golden Gate Bridge is one of the most photographed bridges in the world, but few know that its construction in the 1930s was initially considered almost impossible due to strong currents and constant fog in the bay.





FROM THE WILDS OF ALASKA TO THE DREAM ISLANDS OF HAWAII, EVOCATIVE AND UNFORGETTABLE EXPERIENCES



The lands of Alaska and Hawaii offer two extraordinary and completely different worlds, both rich in natural beauty and unique culture. Alaska, originally inhabited by indigenous tribes such as the Inuit, Tlingit, and Aleut, preserves age-old traditions linked to hunting, fishing, and life in the vast forests and glaciers. Here, imposing mountains, wild rivers, and spectacular fjords offer pristine landscapes and unique adventures, from whale watching to glacier trekking. Hawaii, on the other hand, is an archipelago of volcanic islands, originally inhabited by Polynesians, where culture, myths, and ancestral traditions intertwine with idyllic beaches, active volcanoes, and lush rainforests. Hawaii combines relaxation and adventure, from hiking among lava fields to diving in coral reefs, making every experience memorable. These two destinations offer premium, off-the-beaten-path experiences, perfect for those seeking an exclusive and unforgettable trip. To give an idea of its vastness, Alaska covers approximately 1.7 million km², an area equivalent to almost 28 times the size of the Lombardy region or comparable to the sum of Tuscany, Piedmont, Lombardy, Veneto, Emilia-Romagna and Sicily combined, while Hawaii, in terms of size, can be compared to a collection of medium-sized Italian regions such as Umbria, Marche and Molise.

Two main states:

- ALASKA
- HAWAII

The main airports providing access to the region are:

- Ted Stevens Anchorage International Airport – Alaska's main hub, providing access to cities, fjords, national parks, and remote wilderness areas
- Fairbanks International Airport – A strategic base for exploring Alaska's interior and enjoying mountain and glacier adventures
- Hilo International Airport – Gateway to East Hawaii, ideal for visiting volcanoes, rainforests, and spectacular waterfalls
- Kahului Airport – Prime access to Maui, Hawaii's paradisiacal beaches, excursions, and marine activities
- Daniel K. Inouye International Airport – Main hub for Oahu, perfect for exploring Honolulu, iconic beaches, and cultural sites in Hawaii

Alaska and Hawaii represent two complementary and extraordinary experiences: Alaska offers wild scenery, glaciers, and pristine nature, while Hawaii offers dream islands, Polynesian culture, and breathtaking tropical landscapes. Both destinations combine adventure and moments of pure emotion, perfect for a unique trip. Exploring these lands means immersing yourself in an extraordinary America, where every glimpse is an indelible memory and every experience is unforgettable.

THE STUDY AND LANGUAGE IMMERSION EXPERIENCE IN ENGLISH IN ALASKA AND HAWAII

Studying English in Alaska and Hawaii means experiencing the language in two extreme and profoundly different settings from the rest of the United States, where learning is not centered around large urban networks of language schools, but rather around selected programs, university environments, and continuous immersion in everyday life.

In Alaska, opportunities are mainly concentrated in Anchorage and, to a lesser extent, in Fairbanks, where local universities and educational programs allow direct contact with English in an authentic environment characterized by small communities, a strong connection to nature, and an essential lifestyle. Here, the language is learned through daily life more than through highly structured language school systems.

In Hawaii, particularly in Honolulu (Oahu), English is experienced within a multicultural and international environment influenced by global tourism and the presence of academic institutions such as the University of Hawaii. Language-learning opportunities are more developed than in Alaska, yet they remain selective and integrated into a setting where English is constantly practiced through real-life interaction.

A JOURNEY BEYOND THE LANGUAGE COURSE: AUTHENTIC EXPERIENCES AND DESTINATIONS IN ALASKA AND HAWAII DESIGNED FOR EVERY CATEGORY OF ENGLISH LANGUAGE STUDENT

- **Parents of junior students:** Anchorage, Alaska, offers a safe and well-organized environment, with the Anchorage Museum at Rasmuson Center, where art, science, and Arctic culture intersect, and the nearby Tony Knowles Coastal Trail, a scenic coastal pathway that allows visitors to experience the city in a calm and controlled setting.
- **Teenagers:** Alaska opens up to unique natural experiences such as Chugach State Park, with trails like Flattop Mountain and views over Cook Inlet, where wilderness becomes a direct and immersive experience, far removed from any urban context.
- **University students:** Hawaii offers a balance between study and discovery in Honolulu and along the coasts of Oahu, with areas such as Manoa Valley and the trail to Diamond Head State Monument, where the entire bay can be observed in a setting where nature, ocean, and urban life constantly blend.
- **Adults:** authentic Alaska is experienced beyond Anchorage, toward Kenai Fjords National Park, with glaciers descending into the sea and boat excursions among icebergs and fjords, or along the Seward Highway, considered one of the most scenic roads in North America.
- **Professionals:** Hawaii offers an international environment between Honolulu and less crowded coastal areas such as Kailua and the North Shore, where working life intersects with a global lifestyle, among coworking spaces, international tourism, and a strong intercultural dimension linked to the Pacific.





DID YOU KNOW?

In Alaska, Denali (Mount McKinley) is the highest mountain in North America and dominates Denali National Park, where human presence is minimal and movement often takes place along a single main road that crosses the protected area.

Also in Alaska, the Inside Passage is a network of navigable fjords and channels between mountains and glaciers, used both for maritime connections and scenic cruises through spectacular Arctic landscapes.

In Fairbanks, Alaska, during winter it is possible to observe the northern lights under ideal conditions thanks to its location near the Arctic Circle and very low light pollution.

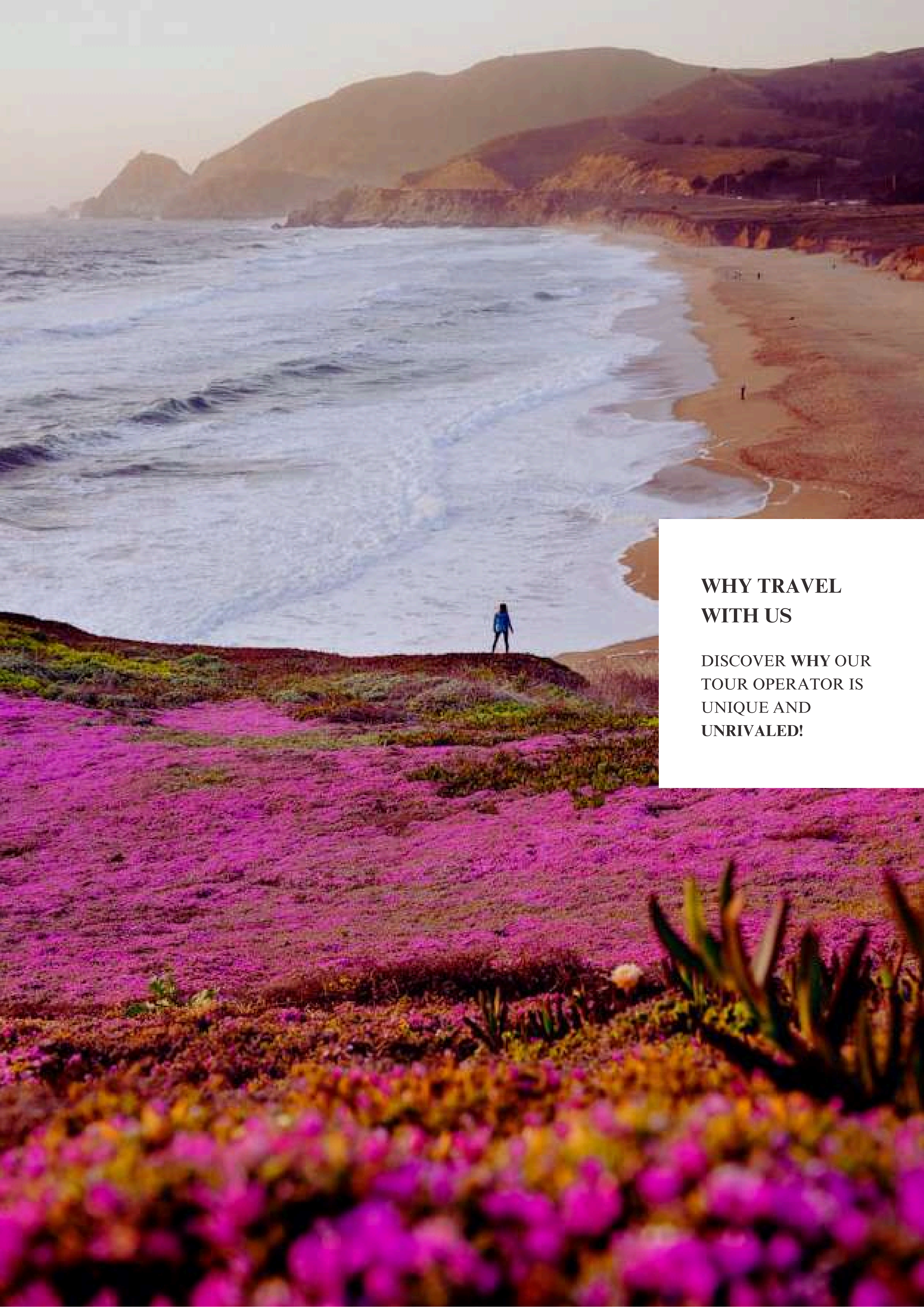
In Alaska, the Mendenhall Glacier near Juneau is one of the most accessible glaciers on the continent: visitors can reach a short distance from the ice front, which continues to change slowly over time.

In Hawaii, the Kīlauea volcano, within Hawai'i Volcanoes National Park, is one of the most active volcanoes in the world and has continuously reshaped the geography of Big Island over time.

Also on Big Island, it is possible to cross completely different environments within just a few hours, moving from black volcanic sand beaches to tropical forests and mountainous areas.

On Oahu, Pearl Harbor is one of the most important historical sites in the United States, linked to the events of 1941, now transformed into a memorial and museum site.

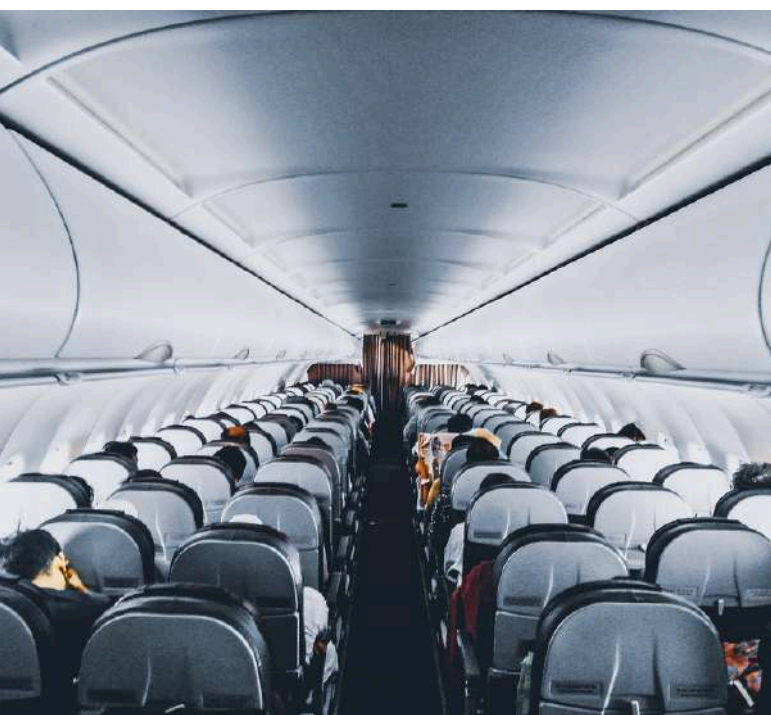
On Maui, the Road to Hana is one of the most scenic drives in the world: curve after curve it crosses narrow bridges, waterfalls, and tropical forests all the way to the island's eastern coast.



**WHY TRAVEL
WITH US**

**DISCOVER WHY OUR
TOUR OPERATOR IS
UNIQUE AND
UNRIVALED!**

BESPOKE TRAVEL FOR EVERYONE



OUR TRAVEL ITINERARIES

We exclusively curate itineraries for innovative and original travel experiences that diverge from the conventional paths of mass tourism. Our aim is for each customer to be the protagonist of their own journey.

OUR TRAVEL CLASSES

We arrange travel for the following categories:

- **FIRST**
- **PREMIUM**
- **ECONOMY**

WE ORGANIZE ITINERARIES USING THE FOLLOWING TRANSPORTS



CAR

- ✓ RENTAL



VAN

- ✓ RENTAL
- ✓ SCHEDULED TOURS WITH DRIVER



COACH

- ✓ RENTAL WITH DRIVER
- ✓ SCHEDULED TOURS WITH DRIVER



MOTORHOME

- ✓ RENTAL



MOTORCYCLE

- ✓ CHARTER SERVICES
- ✓ TAILOR MADE TRAVEL ITINERARIES

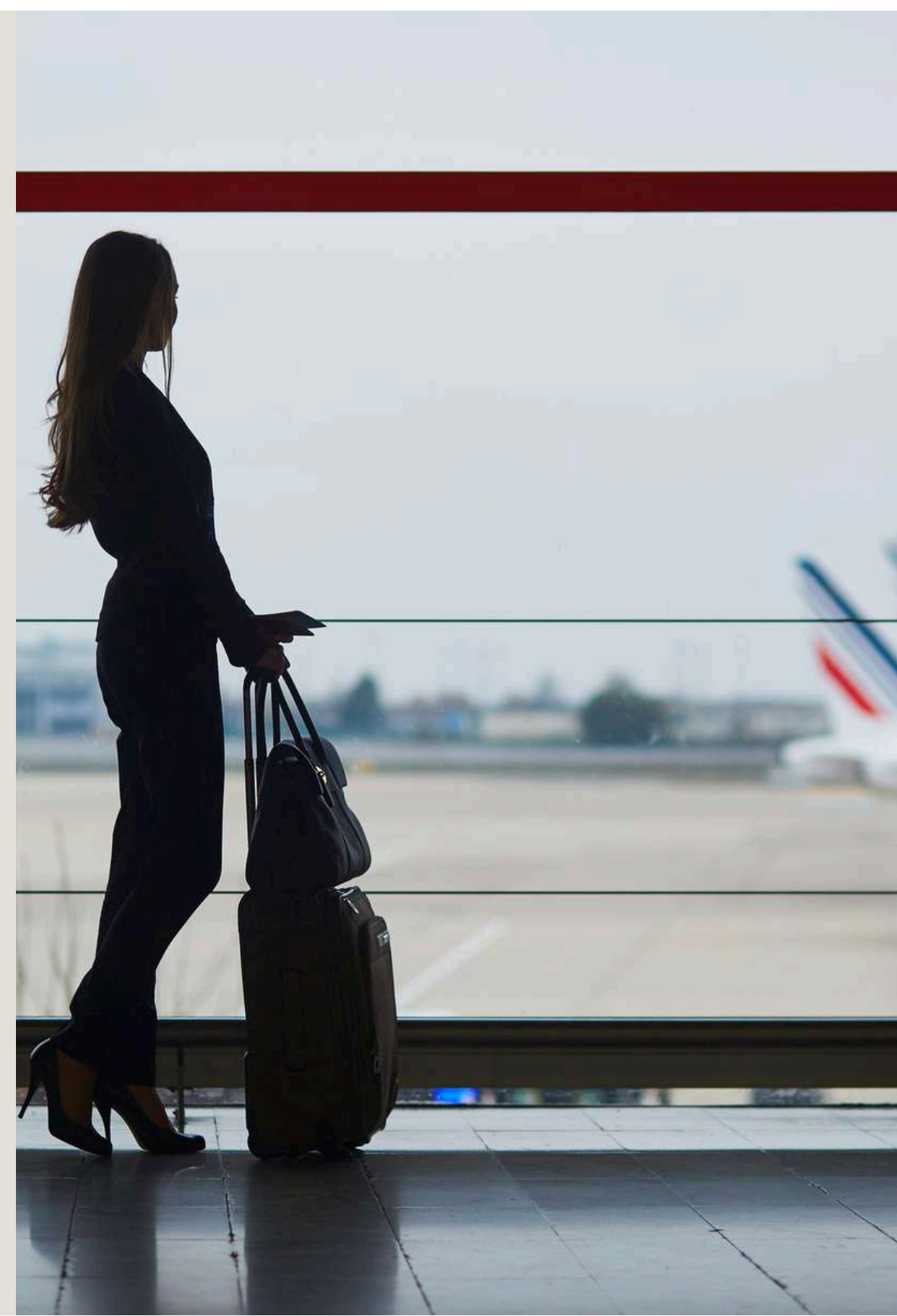


ARRIVING IN THE USA WITHOUT ENTERING THROUGH THE BORDER

For intercontinental flights arriving in the USA, prolonged waits at US borders are commonplace; however, after many hours of travel, fatigue and the time difference create an urgent necessity for rest.

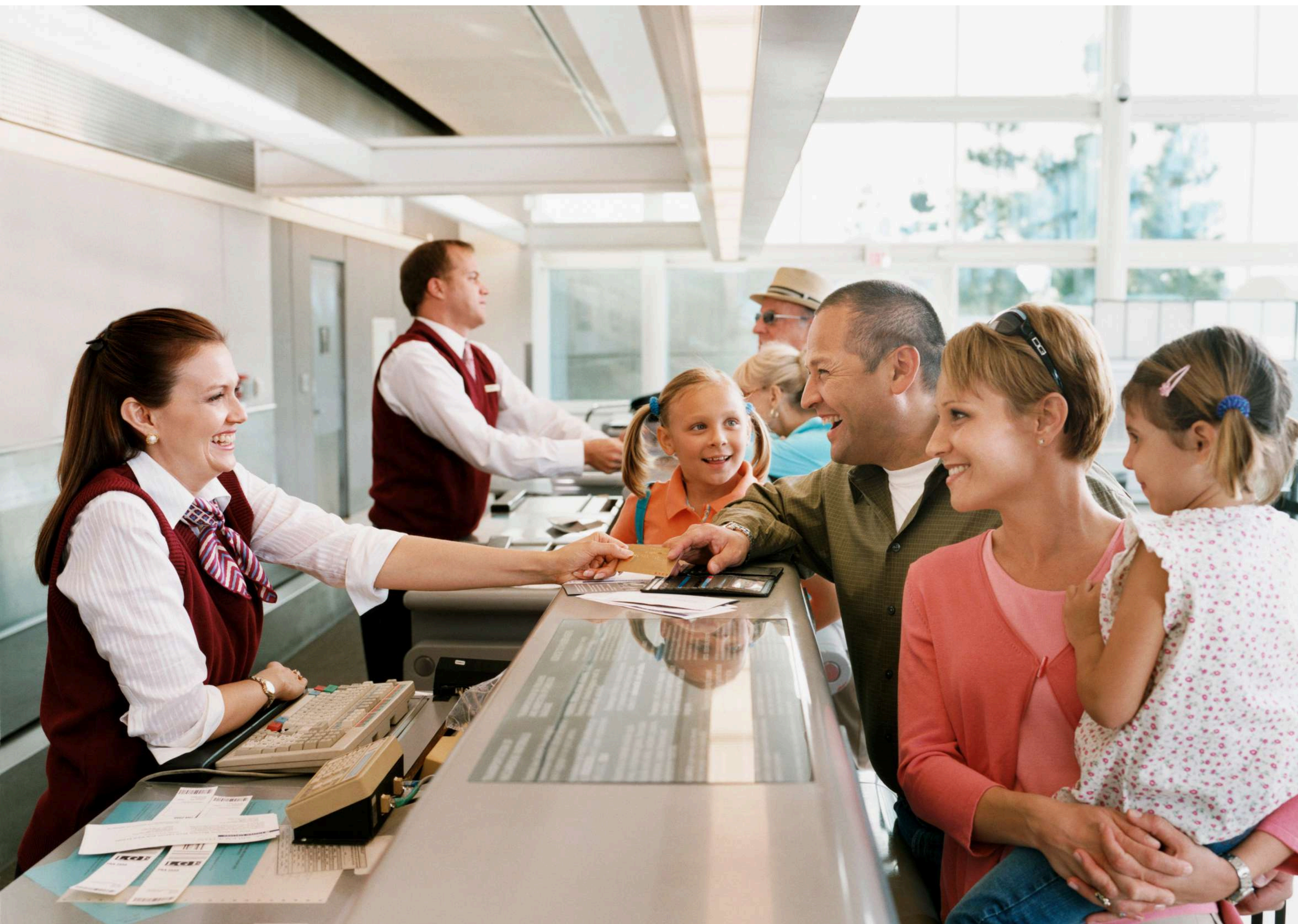
If you intend to cross the US border prior to landing in the United States, this is feasible and will enable you to proceed directly to collect your luggage upon arrival without undergoing any inspections.

Should you wish to incorporate this option into your travel itinerary, we would be pleased to assist you.



PRIORITY CHECK-IN AND CHECKED BAGGAGE

Bid farewell to lengthy check-in queues! With our priority check-in service, you can swiftly obtain your boarding pass and check in your baggage. We are consistently prepared to provide this option, contingent upon airline availability, to enhance your travel experience, whether you are flying in premium or economy class. **Do not squander time; opt for comfort!**



NO QUEUES AT THE AIRPORT WITH THE FAST TRACK SERVICE



We understand the frustration of enduring lengthy waits at airport security. Therefore, we consistently incorporate fast track access into our travel packages, allowing you to bypass the queue and enjoy a stress-free experience.

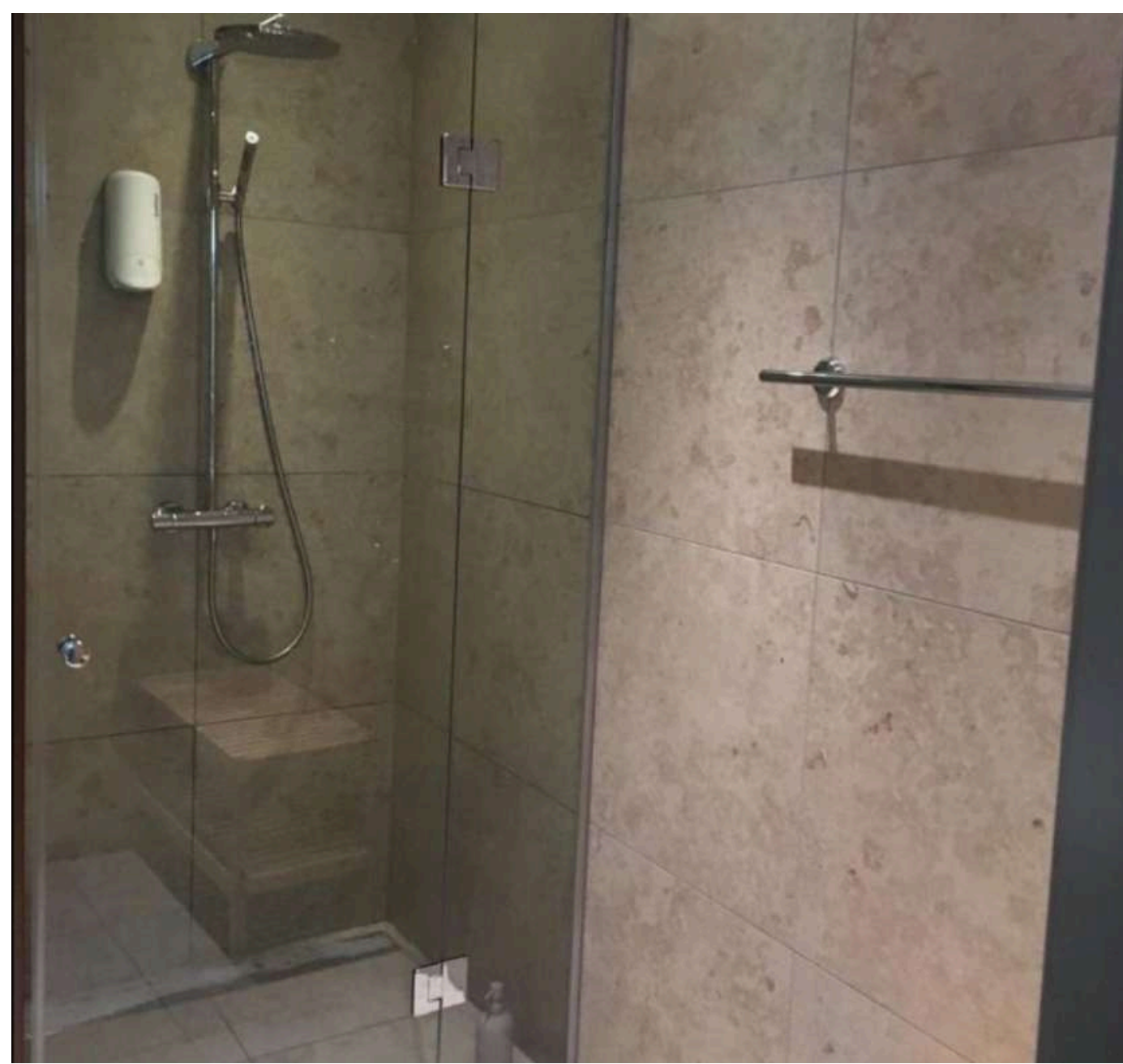
The service is contingent upon the availability at each airport, thus we cannot assure its constant accessibility. Nevertheless, we are pleased to announce that it has been implemented in the majority of the airports we utilize. **Seize this opportunity!**





COMFORT IN AIRPORT LOUNGES

Once reserved solely for business and first-class passengers, airport lounges are now available to travelers in other classes as well. We provide the highest level of comfort and luxury to ensure your airport experience is memorable. In our travel packages, we consistently strive to include access to these exclusive areas at both departure and arrival points (subject to airport and airline availability). Relax, indulge in culinary delights, savor fine beverages, and enjoy refreshing showers, all within elegant and tranquil settings. **Seize this exceptional opportunity!**









OTHERS SERVICES

OUR EXCEPTIONAL PARTNERSHIPS WITH DIVERSE SUPPLIERS ENABLE US TO PROVIDE OUR CUSTOMERS WITH THE FINEST OF THE FOLLOWING SERVICES

ADVANCED LUGGAGE SHIPPING
TOURIST VISAS
CURRENCY EXCHANGE
INSURANCE POLICIES



	AUD	7.01
	NZD	5.05
	JPY	0.0913
	GBP	11.23
	EUR	9.71
	SGD	5.35
	CHF	7.01





ONE FREE INDIVIDUAL FOR EVERY 15 PAYING CUSTOMERS

Take advantage of our **perpetually active** promotion. If you can gather a **minimum of 15 individuals**, one person will receive a **complimentary** trip. Consider anyone who might be interested among family, friends, colleagues, or others. Additionally, if you require a tour leader or tour guide to assist you and your group throughout the entire tour, we can provide this service as well

ALWAYS TRAVEL WITH A PREMIUM DISCOUNT!



-20%

- **ACTIVE YEAR-ROUND**
- **FOR ALL CATEGORIES OF TRAVELERS**
- **NO MINIMUM SPENDING THRESHOLD REQUIRED**

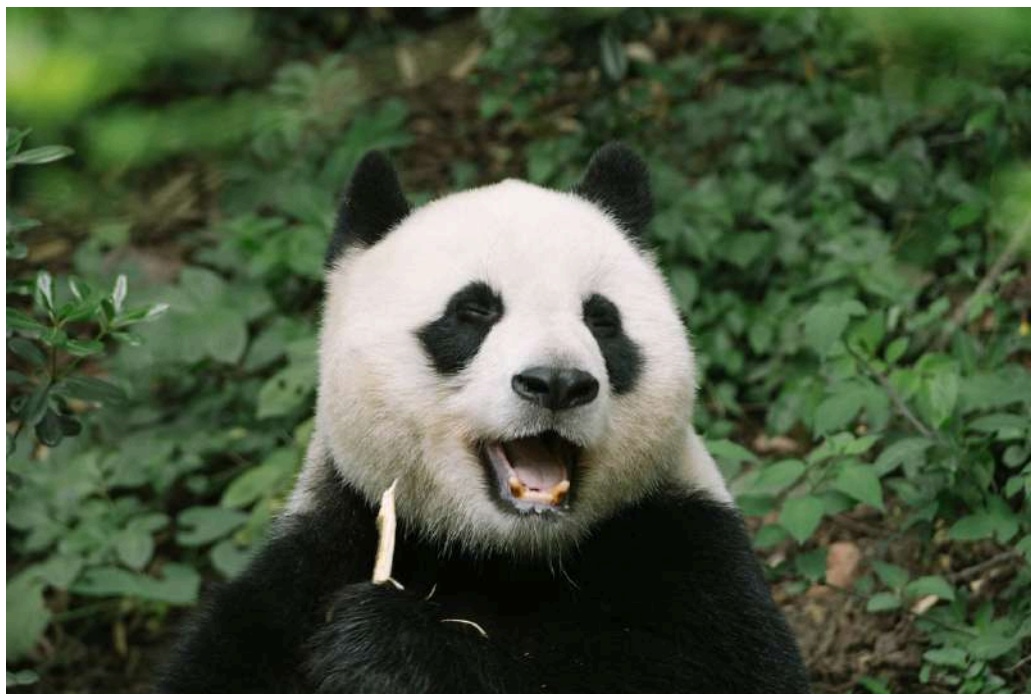


TRAVEL PHOTOGRAPHER

FOR AN UNFORGETTABLE TOUR
FOREVER



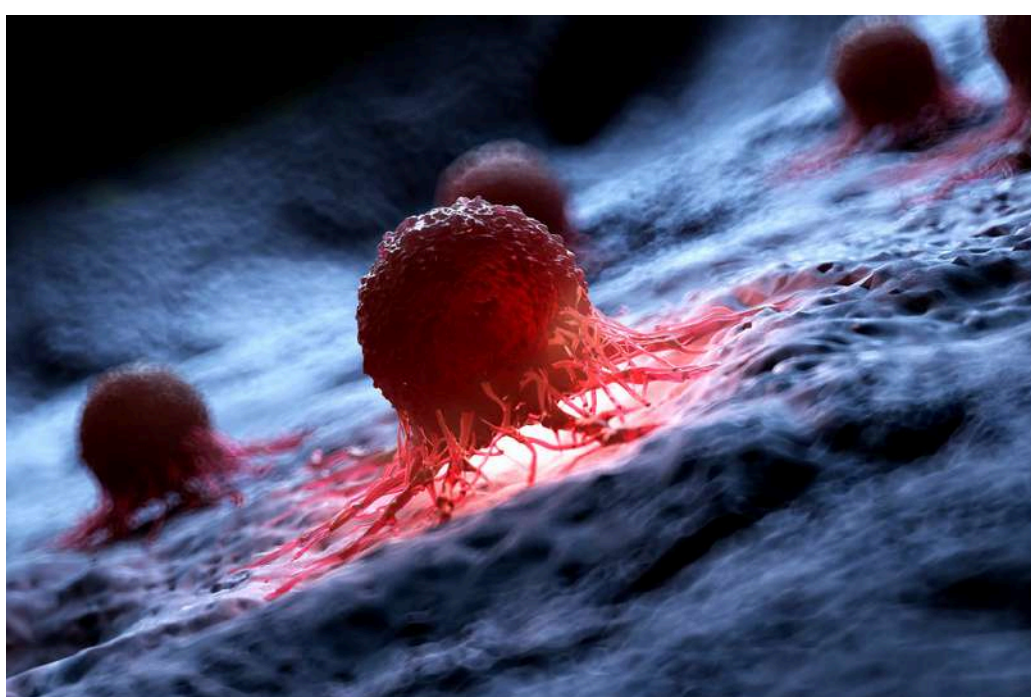
Certain journeys hold a unique significance: a honeymoon, a wedding anniversary marked by the renewal of vows, or cherished moments spent with close friends or family. Such beautiful occasions will be immortalized through professional photography and videography. Should you wish to incorporate this option into your upcoming trip, we are pleased to provide assistance with photographers who can transform your experience into a lasting memory.



OUR COMMITMENT TO ENVIRONMENTAL PROTECTION AND CANCER RESEARCH



THROUGH OUR TRIPS, WE AIM TO PROVIDE OUR CUSTOMERS WITH THE OPPORTUNITY TO **SUPPORT** NON-PROFIT ORGANIZATIONS DEDICATED TO ADDRESSING THE FOLLOWING GLOBAL CHALLENGES.



- **CONSERVATION OF PLANT AND ANIMAL LIFE**
- **GLOBAL WARMING**
- **CANCER RESEARCH**



CONTACT US

**OUR EXCLUSIVE SUPPORT
TO PERSONALIZE YOUR
ITINERARY ACCORDING
TO YOUR NEEDS AND
WISHES**



WOULD YOU LIKE TO REQUEST A QUOTE?

We hope this brochure has been to your liking and a source of inspiration for your next English language course abroad.

If you would like to organise a tailor-made English course, combined with a personalised travel experience across cities, nature, and authentic itineraries, please click on the dedicated quote request button and complete the relevant form with your requirements.

We will be pleased to contact you shortly to create together a study and travel project fully tailored to you.

TRAVEL QUOTATION REQUEST



Atlantic Travel & Tours Ltd

London, New York
Los Angeles, Miami
Denver

ATLANTIC TRAVEL & TOURS LTD

HEADQUARTERED IN THE UNITED STATES AND THE UNITED KINGDOM

REGISTERED COMPANIES

USA - DENVER - COLORADO - COMPANY REGISTRATION NUMBER: 202 110 96 014

UK - LONDON - COMPANY REGISTRATION NUMBER: 130 288 33

E-MAIL

USA - unitedstatesadministration@atlantictourstravel.com

UK - unitedkingdomadministration@atlantictourstravel.com

WEBSITE

www.visitatlantictraveltours.com

FULL CONTACT DETAILS

www.visitatlantictraveltours.com/contact