

ATLANTIC TRAVEL & TOURS

OCEANIA

AUSTRALIA AND FRENCH POLYNESIA

PET-FRIENDLY TRAVEL

**DISCOVER OFF-THE-BEATEN-TRACK DESTINATIONS
WITH YOUR PET: RELAXATION AND FUN WITHOUT
LIMITS**



WWW.VISITATLANTICTRAVELTOURS.COM

FROM THE CEO - FOUNDER

Dear travelers,

Imagine a journey where you are never alone: your four-legged companion walks beside you every step of the way, sharing every discovery, every city view, and every corner of nature. Each experience becomes a moment to enjoy together, filled with authentic emotions and companionship, with the joy of exploring side by side.

Picture peaceful walks along quiet beaches, sunlit waterfronts, parks, and scenic trails immersed in nature, **where your pet can move freely and safely**. Imagine charming small towns, cafés, and local markets welcoming both you and your dog or cat, **creating memories that will forever remain part of your story**.

This brochure is an invitation **to explore, to be inspired**, and to imagine every experience as a special moment to share together. Each page offers atmospheres, ideas, and carefully selected details designed to make you feel **free, comfortable, and fully immersed in the beauty of each destination**.

Open these pages, **let yourselves be carried away by emotion**, and begin planning a pet-friendly journey that belongs as much to your companion as it does to you — an unforgettable adventure to experience together.



Steve Tabacchi

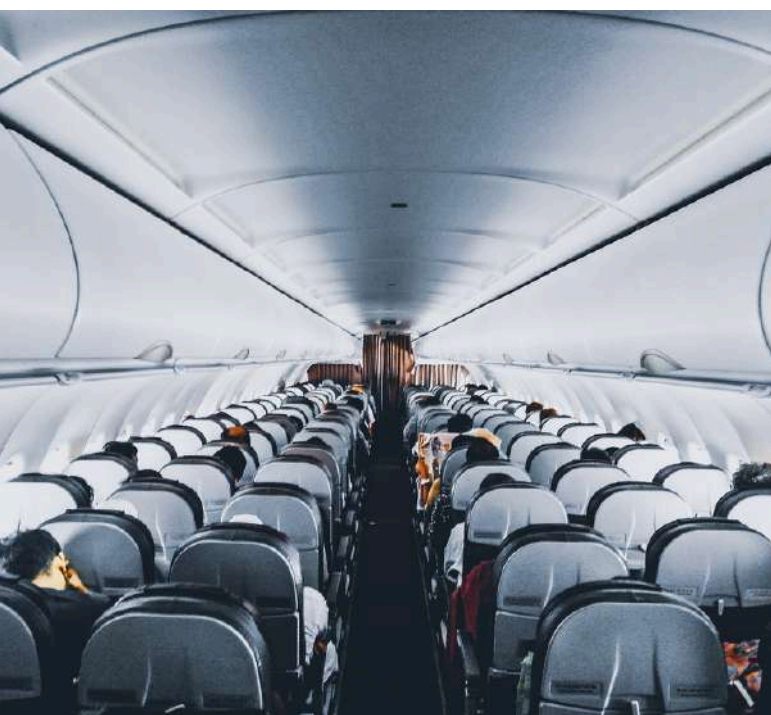
DR. STEVE TABACCHI
CEO - FOUNDER
ATLANTIC TRAVEL & TOURS



WHY TRAVEL WITH US

**DISCOVER WHY OUR
TOUR OPERATOR IS
UNIQUE AND
UNRIVALED!**

BESPOKE TRAVEL FOR EVERYONE



OUR TRAVEL ITINERARIES

We exclusively curate itineraries for innovative and original travel experiences that diverge from the conventional paths of mass tourism. Our aim is for each customer to be the protagonist of their own journey.

OUR TRAVEL CLASSES

We arrange travel for the following categories:

- **FIRST**
- **PREMIUM**
- **ECONOMY**

WE ORGANIZE ITINERARIES USING THE FOLLOWING TRANSPORTS



CAR

- ✓ RENTAL



VAN

- ✓ RENTAL
- ✓ SCHEDULED TOURS WITH DRIVER



COACH

- ✓ RENTAL WITH DRIVER
- ✓ SCHEDULED TOURS WITH DRIVER



FERRY

- ✓ INTERNAL TRANSFERS
- ✓ TOURS AND EXCURSIONS



AIRPLANE

- ✓ DOMESTIC FLIGHTS

PRIORITY CHECK-IN AND CHECKED BAGGAGE

Bid farewell to lengthy check-in queues! With our priority check-in service, you can swiftly obtain your boarding pass and check in your baggage. We are consistently prepared to provide this option, contingent upon airline availability, to enhance your travel experience, whether you are flying in premium or economy class. **Do not squander time; opt for comfort!**



NO QUEUES AT THE AIRPORT WITH THE FAST TRACK SERVICE



We understand the frustration of enduring lengthy waits at airport security. Therefore, we consistently incorporate fast track access into our travel packages, allowing you to bypass the queue and enjoy a stress-free experience.

The service is contingent upon the availability at each airport, thus we cannot assure its constant accessibility. Nevertheless, we are pleased to announce that it has been implemented in the majority of the airports we utilize. **Seize this opportunity!**





COMFORT IN AIRPORT LOUNGES

Once reserved solely for business and first-class passengers, airport lounges are now available to travelers in other classes as well. We provide the highest level of comfort and luxury to ensure your airport experience is memorable. In our travel packages, we consistently strive to include access to these exclusive areas at both departure and arrival points (subject to airport and airline availability). Relax, indulge in culinary delights, savor fine beverages, and enjoy refreshing showers, all within elegant and tranquil settings. **Seize this exceptional opportunity!**









OTHERS SERVICES

OUR EXCEPTIONAL PARTNERSHIPS WITH DIVERSE SUPPLIERS ENABLE US TO PROVIDE OUR CUSTOMERS WITH THE FINEST OF THE FOLLOWING SERVICES

ADVANCED LUGGAGE SHIPPING
TOURIST VISAS
CURRENCY EXCHANGE
INSURANCE POLICIES



	AUD	7.01
	NZD	5.05
	JPY	0.0913
	GBP	11.23
	EUR	9.71
	SGD	5.35
	CHF	7.01



ALWAYS TRAVEL WITH A PREMIUM DISCOUNT!



-20%

- **ACTIVE YEAR-ROUND**
- **FOR ALL CATEGORIES OF TRAVELERS**
- **NO MINIMUM SPENDING THRESHOLD REQUIRED**



TRAVEL PHOTOGRAPHER

FOR AN UNFORGETTABLE TOUR
FOREVER



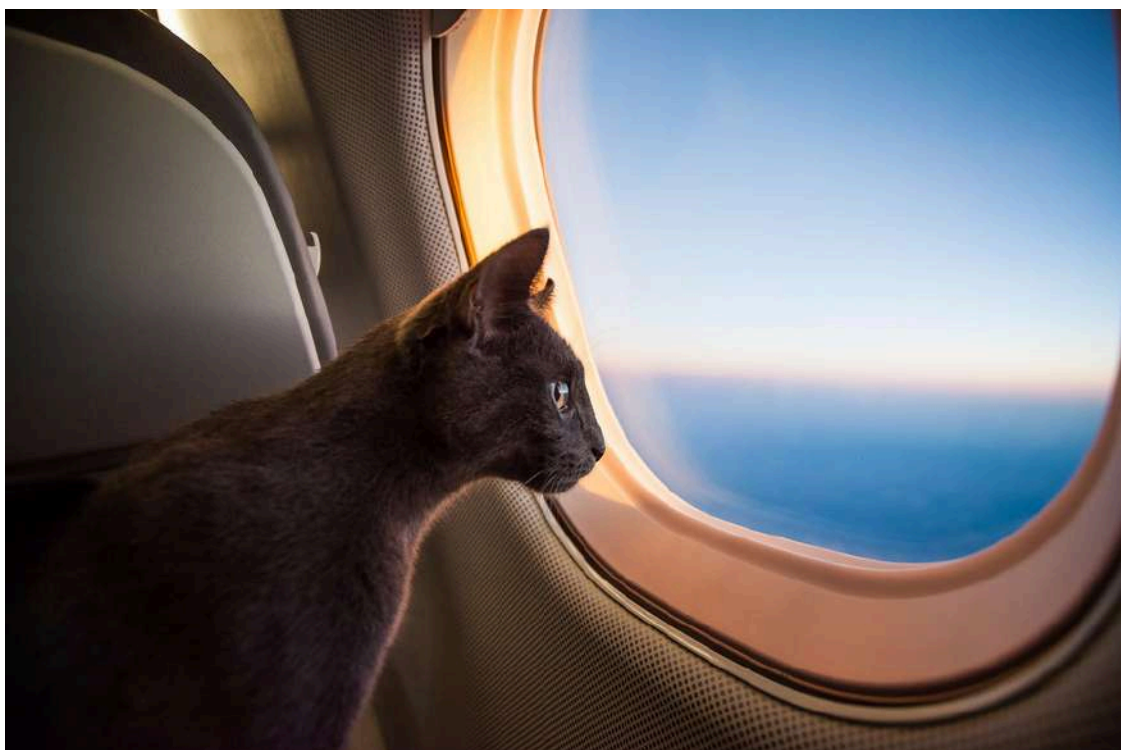
Certain journeys hold a unique significance: a honeymoon, a wedding anniversary marked by the renewal of vows, or cherished moments spent with close friends or family. Such beautiful occasions will be immortalized through professional photography and videography. Should you wish to incorporate this option into your upcoming trip, we are pleased to provide assistance with photographers who can transform your experience into a lasting memory.



ONE FREE INDIVIDUAL FOR EVERY 15 PAYING CUSTOMERS

Take advantage of our **perpetually active** promotion. If you can gather a **minimum of 15 individuals**, one person will receive a **complimentary** trip. Consider anyone who might be interested among family, friends, colleagues, or others. Additionally, if you require a tour leader or tour guide to assist you and your group throughout the entire tour, we can provide this service as well

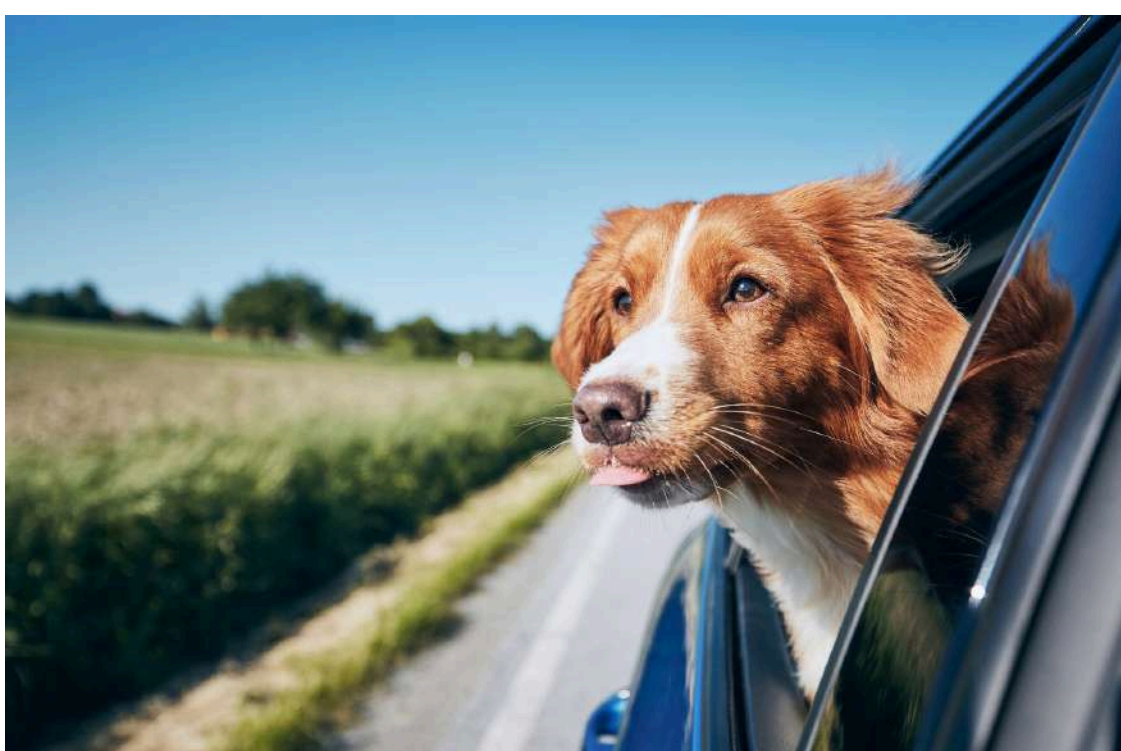
TRAVELING WITH PETS

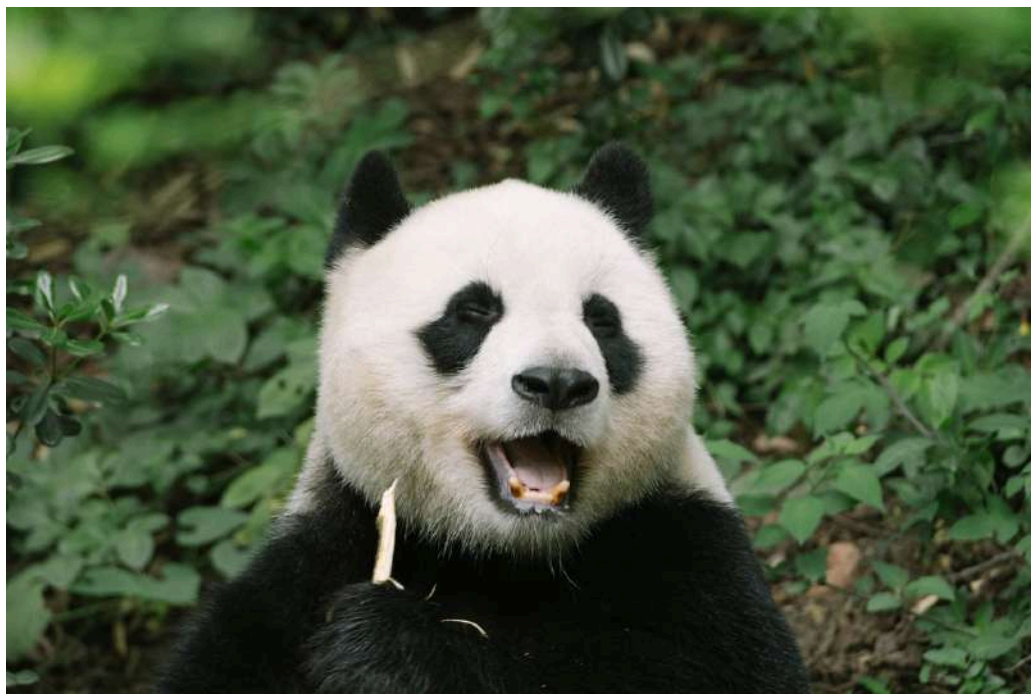


Do you wish to travel but are uncertain about who to entrust your four-legged companion to? Why not bring him or her along for the adventure? After all, he or she is an essential member of your family. We also arrange customized trips for this specific situation.

SERVICES OFFERED

- **TRANSPORT**
- **ACCOMMODATION**
- **PET SITTING SERVICE**
- **TRAVEL INSURANCE FOR ANIMALS**

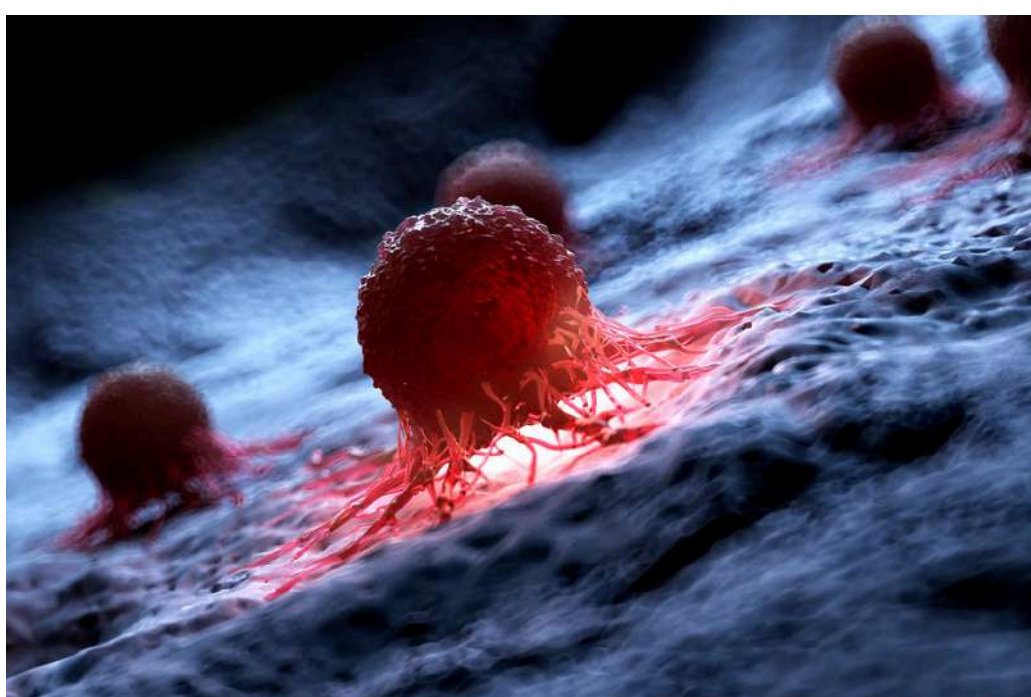




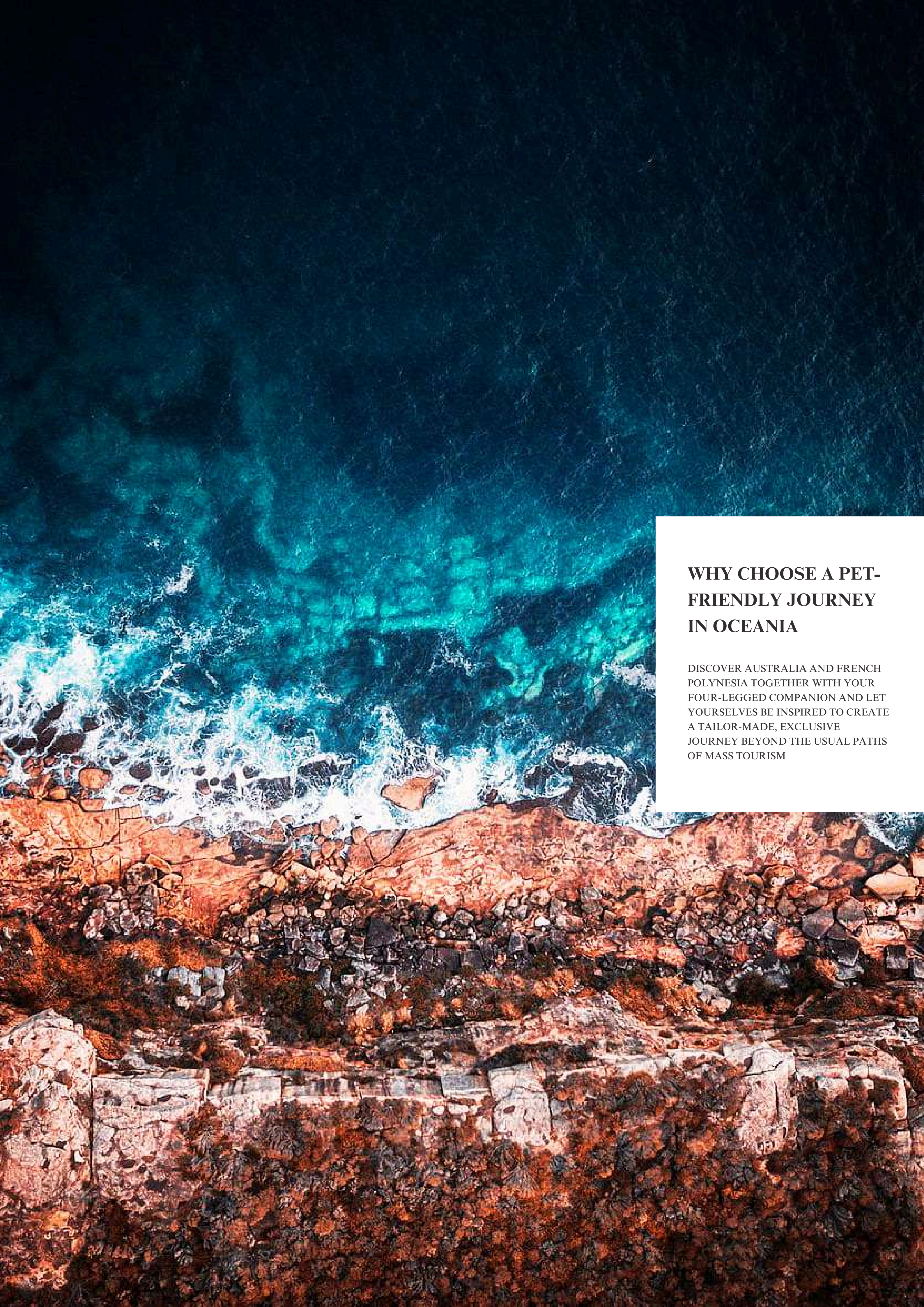
OUR COMMITMENT TO ENVIRONMENTAL PROTECTION AND CANCER RESEARCH



THROUGH OUR TRIPS, WE AIM TO PROVIDE OUR CUSTOMERS WITH THE OPPORTUNITY TO **SUPPORT** NON-PROFIT ORGANIZATIONS DEDICATED TO ADDRESSING THE FOLLOWING GLOBAL CHALLENGES.



- **CONSERVATION OF PLANT AND ANIMAL LIFE**
- **GLOBAL WARMING**
- **CANCER RESEARCH**



WHY CHOOSE A PET-FRIENDLY JOURNEY IN OCEANIA

DISCOVER AUSTRALIA AND FRENCH POLYNESIA TOGETHER WITH YOUR FOUR-LEGGED COMPANION AND LET YOURSELVES BE INSPIRED TO CREATE A TAILOR-MADE, EXCLUSIVE JOURNEY BEYOND THE USUAL PATHS OF MASS TOURISM

THE CHARM OF A PET-FRIENDLY JOURNEY BETWEEN AUSTRALIA AND FRENCH POLYNESIA



A pet-friendly journey between Australia and French Polynesia requires careful planning, as it unfolds across two very different geographical contexts that share, however, vast natural areas and a strong focus on ecosystem preservation. The experience is not based solely on choosing destinations, but above all on the ability to integrate travel with outdoor moments, controlled spaces, and accommodations that allow a balanced coexistence between guests and pets, in compliance with local regulations and the environment.

Australia is one of the most structured destinations in the Pacific for travelling with pets, thanks to its wide open spaces, urban parks, waterfronts, and coastal areas where dedicated paths and dog-friendly zones can be found, especially in major cities such as Sydney, Melbourne, Brisbane, and Adelaide. In these settings, travel unfolds through walks along bays, equipped green areas, and residential neighbourhoods with a strong presence of outdoor services, while in more natural regions such as Tasmania and South Australia it is possible to experience open landscapes, always respecting national park regulations. Australian nature offers a wide variety of scenery: ocean coasts, eucalyptus forests, wine regions, and semi-desert areas, making the journey extremely dynamic. However, access for pets in protected areas and national parks is generally regulated, which is why pet-friendly travel mainly focuses on urban areas, coastal walks, and specifically equipped accommodations.

In French Polynesia, the pet-friendly dimension is more limited and strictly regulated, especially on the more tourist-oriented islands such as Tahiti, Moorea, and Bora Bora. French Polynesia is characterised by fragile ecosystems, protected lagoons, and highly sensitive marine biodiversity, all of which require strict controls on access and interaction with the natural environment. In this context, any travel solutions with pets must be carefully planned and are mainly limited to selected accommodations, private settings, and specific areas where animals are allowed in compliance with health and environmental regulations. The landscape, dominated by coral lagoons, motu, and volcanic islands, remains the central element of the experience, even if it is experienced in a more controlled way.

The relationship with the territory therefore changes significantly between the two destinations. In Australia, pet-friendly travel unfolds through wide spaces, accessible urban routes, and regulated but widespread natural environments, while in French Polynesia a more selective and structured dimension prevails, linked to the protection of fragile island and marine ecosystems.

From a cultural and environmental perspective, both realities share a strong respect for nature, but with different approaches: in Australia, the management of public spaces allows greater flexibility in urban and coastal environments, while in French Polynesia the priority is the preservation of the delicate balance between land, lagoon, and ocean.

A pet-friendly journey between Australia and French Polynesia is therefore built on careful and conscious choices, prioritising suitable accommodations, sustainable itineraries, and contexts where the relationship between guests, animals, and environment can maintain harmony, safety, and respect for the territory.

WHY CHOOSE AUSTRALIA AND FRENCH POLYNESIA FOR A PET-FRIENDLY TRIP

A JOURNEY BUILT THROUGH NATURE, OPEN SPACES, AND MORE BALANCED STAYS

A pet-friendly trip between Australia and French Polynesia requires much more careful planning than other destinations, but precisely for this reason it can become a more mindful experience, closely connected to the territory. In these areas of the Pacific, the relationship with the natural environment is central and directly influences the way of travelling, the management of transfers, and the choice of accommodation.

Australia offers vast open spaces, well-organised coastal cities, and a strong outdoor culture that allows for balanced itineraries between urban areas, ocean coasts, and scenic regions. French Polynesia, instead, introduces a more insular and regulated dimension, where the journey develops mainly through longer stays and highly protected environmental contexts.

TERRITORIES AND LANDSCAPES THAT INFLUENCE THE WAY OF TRAVELLING WITH PETS

In Australia, pet-friendly travel is particularly well suited to large coastal cities and less densely urbanised regions. Sydney, Melbourne, Adelaide, and Perth offer waterfronts, urban parks, scenic walking routes, and outdoor areas where the presence of pets is integrated into daily life. Many coastal and wine regions in South Australia, Victoria, and Tasmania also allow stays in accommodation immersed in nature, with more relaxed rhythms and easily accessible open spaces. However, the presence of very delicate ecosystems and protected wildlife means that access to natural areas must be carefully regulated, especially in national parks and conservation zones.

In French Polynesia, instead, the relationship with the territory is even more closely linked to the protection of island and marine ecosystems. The main islands such as Tahiti and Moorea concentrate most of the structures and services compatible with pet-friendly stays, while the more remote atolls maintain very strict regulations in order to preserve lagoons, coral reefs, and local biodiversity.

AN ITINERARY THAT PRIORITISES STAY DURATION, ORGANISATION, AND RELATIONSHIP WITH THE ENVIRONMENT

Australia and French Polynesia allow for the creation of a pet-friendly journey that is very different from traditional fast-paced and fragmented tourism. In Australia, the trip unfolds across vast spaces, scenic roads, ocean coasts, and stays distributed over very large territories, where movement itself becomes part of the experience. In French Polynesia, instead, a more stable and compact dimension prevails, where staying on the islands becomes central and the relationship with the sea shapes the daily rhythm.

The result is a travel model that prioritises continuity, organisation, and the quality of the surrounding environment. Not an itinerary built on the accumulation of activities, but a slower and more immersive experience, where nature, open spaces, and time spent in each place allow the journey to be shared while maintaining balance between comfort, sustainability, and respect for the territories visited.





TAILOR-MADE JOURNEYS IN AUSTRALIA AND FRENCH POLYNESIA

A trip to Australia and French Polynesia can become truly special when shared with your four-legged friends. Pet-friendly holidays allow you to explore unique landscapes, authentic villages, and natural attractions together with your pets, without giving up comfort, safety, and relaxation.

For this reason, it should never be a standard package, but an experience designed with care and attention, tailored to you and your four-legged travel companions.

Our approach to creating pet-friendly journeys is based on a fundamental principle: every itinerary must be unique, accessible, and adapted to the needs of your animals, ensuring safe and enjoyable experiences for everyone.

We listen to your wishes, understand your rhythm and travel style, and design a journey that makes every stage of your shared adventure special.

Every detail is carefully considered:

- Destination selection, from natural parks with pet-friendly trails to quiet beaches and scenic islands, as well as villages and towns that welcome animals**
- Itinerary pace, to enjoy every experience without hurry or stress, allowing time for your pets' needs**
- Experiences along the way, such as scenic walks, visits to pet-friendly museums and attractions, nature excursions, and relaxing moments together**
- Selection of the most welcoming accommodations, with services dedicated to animals and comfortable spaces for a peaceful stay**

The result is an authentic, safe, and deeply personal journey, designed to offer unforgettable moments with your pets, discovering places far from mass tourism and creating precious shared memories with those you love.

EXPERIENCES THAT MAKE A PET-FRIENDLY JOURNEY BETWEEN AUSTRALIA AND FRENCH POLYNESIA TRULY UNIQUE



A JOURNEY SHAPED BY THE RELATIONSHIP BETWEEN OPEN SPACES, NATURE, AND MORE FLEXIBLE STAYS

A pet-friendly journey between Australia and French Polynesia is not based on intensive itineraries or constant changes of setting, but on the possibility of integrating the presence of a pet into environments that naturally favour open spaces, slower rhythms, and coherently structured stays. Australia and French Polynesia represent two very different yet complementary approaches: the first is characterised by vast territories and advanced urban infrastructure, while the second is defined by an insular dimension more closely regulated and deeply dependent on environmental balance.

EXPERIENCES THAT ARISE FROM THE ALTERNATION BETWEEN OUTDOOR- ORIENTED CITIES AND WELL- REGULATED NATURAL ENVIRONMENTS

In Australia, pet-friendly travel naturally extends into coastal cities and open-air environments. Urban areas such as Sydney, Melbourne, Brisbane, and Adelaide offer waterfronts, public parks, scenic walking paths, and outdoor spaces where pets are often integrated into everyday life. Many coastal and rural regions also provide stays in lodges and nature-based accommodations with generous outdoor areas, where the relationship with the environment is direct and continuous, while still respecting the regulations of national parks and protected areas.

In French Polynesia, by contrast, the context is more selective and regulated. Main islands such as Tahiti and Moorea concentrate most of the tourism infrastructure, while the atolls and more remote areas maintain strict environmental protections to safeguard fragile ecosystems. The journey therefore unfolds mainly within controlled settings, where the presence of pets is only possible in specific accommodations and with careful management of the relationship with the insular environment.

AN ITINERARY BUILT ON BALANCE, RESPECT FOR THE ENVIRONMENT, AND CONTINUITY OF STAY

In this type of journey, the central element is not continuous mobility, but the ability to identify coherent and sustainable environments in which to stay with greater stability. In Australia, the structure of the territory allows for greater flexibility, thanks to vast open spaces, well-organised cities, and easily accessible coastal areas. In French Polynesia, by contrast, the insular dimension requires more careful planning, favouring specific accommodations and more concentrated stays.

The result is a pet-friendly journey built on balance and awareness, where nature is not only a backdrop but a regulating element of the experience. It is not a fragmented itinerary, but a sequence of selected environments that allow travel to be experienced in harmony with the territory, the rhythm of the stay, and the presence of the pet.

WHEN TO TRAVEL FOR A PET- FRIENDLY JOURNEY BETWEEN AUSTRALIA AND FRENCH POLYNESIA



The ideal timing for a travel between Australia and French Polynesia depends significantly on the climatic diversity of two destinations that are both geographically distant and seasonally complex. Australia spans multiple climate zones, while French Polynesia follows a tropical oceanic pattern, where seasonality is mainly defined by rainfall and sea conditions. As a result, there is no single “perfect” period for both destinations, but rather overlapping seasonal windows that must be carefully combined depending on the itinerary.

Australia: contrasting seasons across regions

Australia’s vast scale creates strong regional differences, meaning the best time varies depending on the area visited.

September – November / March – May

These are generally the most balanced periods for much of the country. Southern cities such as Sydney, Melbourne, and Adelaide experience mild temperatures, while coastal regions of Queensland and Western Australia are also typically stable and pleasant.

December – February

Austral summer: ideal for southern coastal regions and Tasmania, with warm, vibrant conditions. However, the northern tropical areas (such as Cairns, the Daintree region, and Darwin) can be very hot and humid, with a higher risk of heavy rainfall and cyclones.

June – August

Austral winter: particularly suitable for the tropical north and the Red Centre (Uluru), where conditions are dry and more comfortable. Conversely, southern regions and Tasmania can be cooler and less inviting for extended outdoor experiences.

In summary, Australia is a year-round destination, but not all regions are equally suitable at the same time.

French Polynesia: tropical rhythm between dry and wet seasons

French Polynesia follows a more uniform tropical climate, with two main seasonal phases.

May – October

The most favourable period, characterised by more stable weather, lower rainfall, and generally calmer seas. This is the ideal season for islands such as Tahiti, Moorea, and Bora Bora, offering optimal conditions for lagoon activities and sea-based experiences.

November – April

Warmer and more humid season, with a higher likelihood of intense but often short-lived rainfall. While still visitable, weather variability may affect the consistency of the experience, particularly on more exposed islands.

In summary, French Polynesia is a year-round destination, but the dry season offers a more predictable and generally more comfortable experience.

Planning across two hemispheres and two climatic systems

A honeymoon between Australia and French Polynesia therefore requires careful coordination of seasonal patterns across two different hemispheres and climatic logics. Australia varies significantly between north and south and between austral summer and winter, while French Polynesia follows a tropical cycle defined by dry and wet seasons.

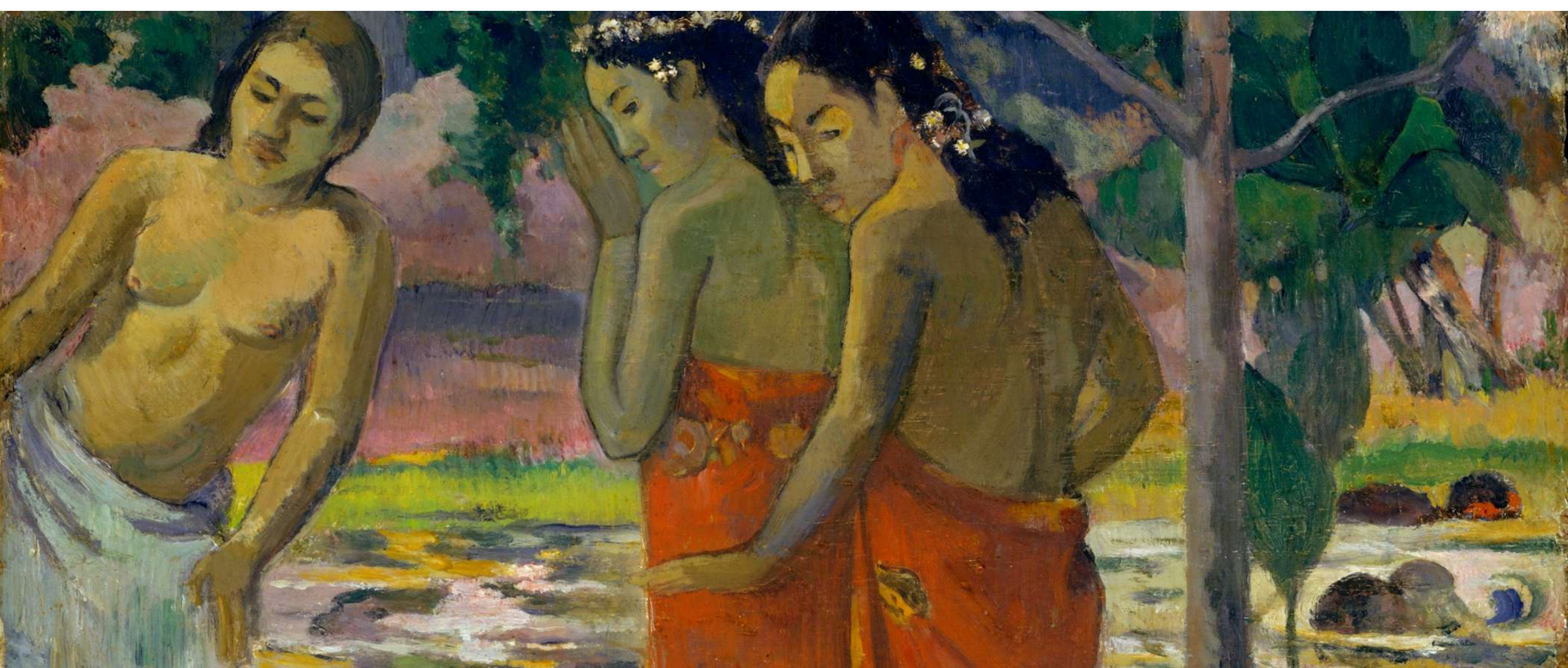
The choice of travel period becomes a defining element of the experience itself, influencing not only weather conditions but also landscape quality, regional accessibility, and the overall rhythm of the journey between a continental system and the island world of the Pacific.

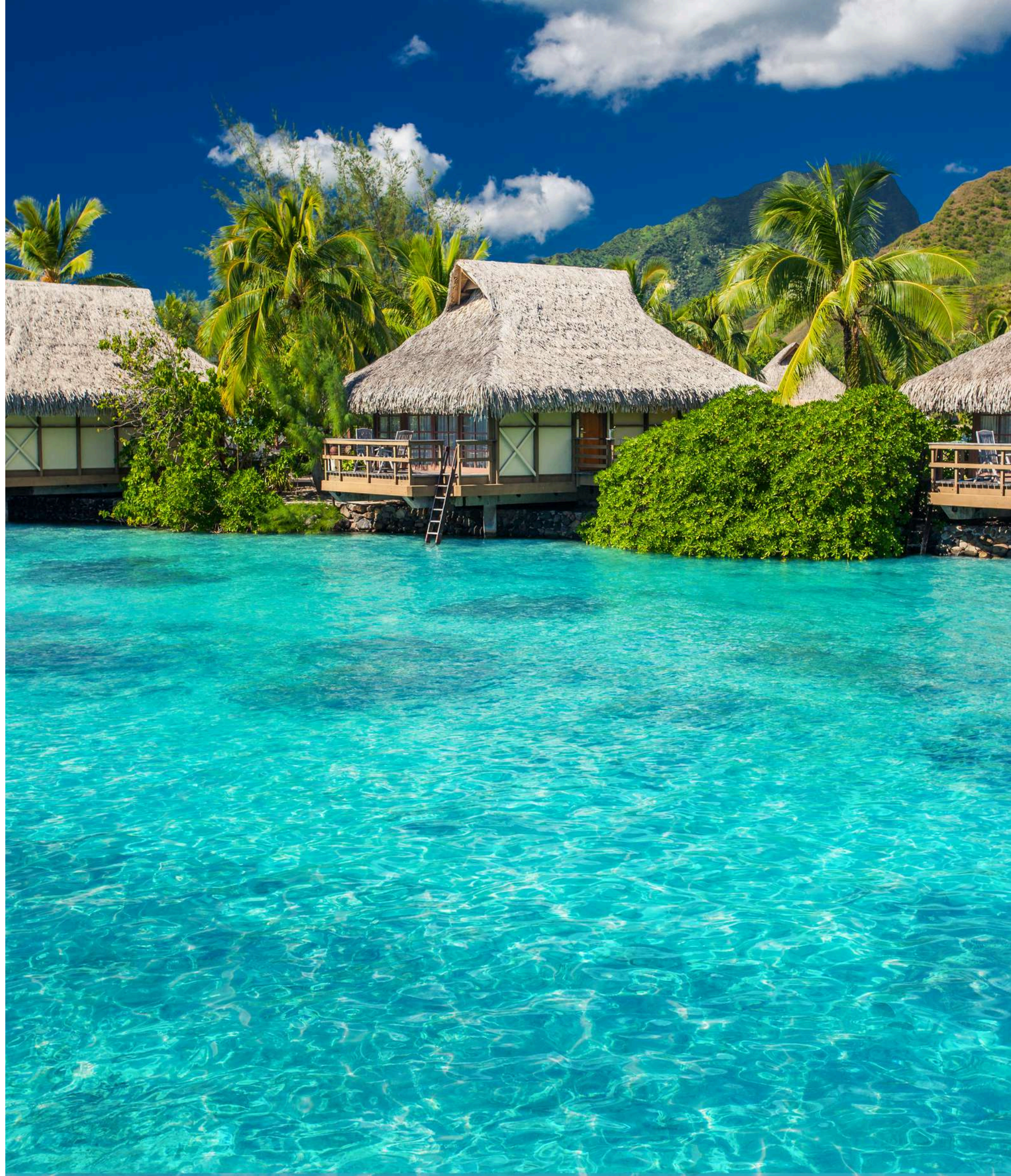
10 TRAVEL SCENARIOS THAT EXIST ONLY BETWEEN AUSTRALIA AND FRENCH POLYNESIA

Between Australia and French Polynesia, there are travel experiences that unfold far from major international flows and well-established routes, across extremely vast or highly fragmented territories where geography directly shapes the rhythm of daily life. Australia and French Polynesia offer two opposite yet complementary systems: a continent made up of vast distances, deserts, coastlines, and cities isolated from one another, and an oceanic archipelago composed of volcanic islands and atolls scattered across the Pacific. The result is a way of travelling based on the continuity of landscape and the constant alternation between continental scale and insular dimension.

Among the most evocative:

- Travel along the Great Ocean Road between cliffs, surf towns, and coastal forests – Australia (Victoria) - Along Victoria's southeastern coast, the Great Ocean Road stretches between Torquay, Lorne, and Apollo Bay, reaching the Twelve Apostles. It is an itinerary where the Southern Ocean shapes cliffs, rock arches, and exposed beaches, while small coastal towns maintain a strong identity linked to surfing and marine life.
- Cross the Red Centre between Alice Springs, Kings Canyon, and Uluru-Kata Tjuta – Australia (Northern Territory) - In the heart of the continent, the territory between Alice Springs, Kings Canyon, and Uluru-Kata Tjuta unfolds as a continuous desert landscape, marked by canyons, monumental rock formations, and remote communities. The desert becomes both a geographical and cultural system, deeply connected to Aboriginal presence.
- Explore Tasmania between Hobart, Freycinet, and the Bay of Fires - The island of Tasmania combines historic cities such as Hobart with natural areas like Freycinet National Park and the Bay of Fires. The landscape alternates between mountains, isolated bays, and coastlines of orange rock, in a context of strong natural continuity and low population density.
- Traverse the Daintree Rainforest and the Great Barrier Reef between Cape Tribulation and Cairns – Australia (Queensland) - In northern Queensland, the Daintree Rainforest extends to Cape Tribulation, where tropical forest meets the coastline directly. Further north, Cairns serves as the gateway to the Great Barrier Reef, one of the most complex marine systems in the world.
- Experience the Society Islands between Tahiti, Moorea, and Bora Bora – French Polynesia - In French Polynesia, the Society Islands offer a continuous yet varied insular system: Tahiti with Papeete and its inland peaks, Moorea with its deep bays, and Bora Bora with its central lagoon. The landscape is defined by the constant relationship between volcanic mountains and the ocean.
- Explore the Tuamotu atolls between Rangiroa and Fakarava – French Polynesia - The Tuamotu atolls, such as Rangiroa and Fakarava, represent one of the most essential geographical forms in the Pacific: coral rings, lagoon passes, and small villages spread over extremely limited land areas. The sea entirely defines the structure of the territory.
- Follow the traces of Paul Gauguin between Hiva Oa, Atuona, and the Gauguin Museum – Marquesas Islands, French Polynesia - In the Marquesas Islands, Hiva Oa is one of the most isolated environments in the entire Pacific. In Atuona lie the main village, Paul Gauguin's cemetery, and the Paul Gauguin Museum, while the surrounding landscape is composed of deep valleys, mountains, and ocean cliffs.
- Cross the Kimberley between Broome, Windjana Gorge, and the Horizontal Falls – Australia (Western Australia) - In northwestern Australia, the Kimberley is one of the country's most remote regions. Between Broome, Windjana Gorge, and the Horizontal Falls, rugged coastlines, canyons, and tidal phenomena alternate in a still sparsely inhabited territory.
- Discover Lord Howe Island between lagoon, extinct volcanoes, and protected biodiversity – Australia (New South Wales) - Lord Howe Island is a remote island in the southwestern Pacific Ocean, characterised by a sheltered lagoon, volcanic peaks, and unique biodiversity. Restricted access maintains a balance between environmental conservation and extremely limited human presence.
- Sail through the Austral and Gambier Islands between Mangareva and remote lagoons – French Polynesia - The Austral and Gambier Islands, with centres such as Mangareva, represent the most peripheral part of French Polynesia. Here, travel unfolds between deep lagoons, isolated villages, and a fragmented geography where maritime connections entirely structure daily life.





THE MOST CHARMING ACCOMMODATIONS FOR A PET-FRIENDLY JOURNEY

A journey is defined not only by the places visited, but also by the accommodations in which one stays, which become an integral part of the experience and profoundly influence its rhythm. Between Australia and French Polynesia, hospitality takes on very different forms: contemporary urban hotels, nature-based lodges, coastal eco-retreats, overwater bungalows, and structures integrated into volcanic or tropical landscapes. In both cases, accommodation is never neutral, but actively shapes the way the journey is experienced.

In Australia, accommodation directly reflects the country's vast geographical diversity. In major coastal cities such as Sydney, Melbourne, and Brisbane, contemporary hotels overlook waterfronts, historic districts, or evolving urban skylines. These properties offer an immediate connection with the country's cultural and urban dimension. In coastal and natural regions, accommodation shifts towards eco-lodges, retreats, and resorts immersed in the landscape, such as along the Great Ocean Road, in Tasmania, or in Queensland. Here, nature becomes an integral part of the architecture, with structures blending into forests, cliffs, and national parks. In more remote areas such as the Northern Territory Outback or the Red Centre around Uluru, stays take on yet another dimension, with experiential camps and desert lodges offering direct contact with the arid landscape and the night sky.

In French Polynesia, hospitality is closely tied to the insular structure of the territory. On Society Islands such as Tahiti, Moorea, and Bora Bora, stays are defined by lagoon resorts, overwater bungalows, and properties integrated into tropical vegetation, where the ocean is a constant and immediate presence. In the Tuamotu atolls, accommodation becomes more essential and closely connected to the purity of the ocean environment, with guesthouses and small local structures overlooking lagoons and coral motu. In the Marquesas Islands, such as Hiva Oa and Nuku Hiva, stays take on a wilder and more cultural dimension, with lodgings set within mountainous landscapes and deep valleys, far from the classic Pacific beach image.

MISTAKES TO AVOID WHEN PLANNING A PET-FRIENDLY JOURNEY BETWEEN AUSTRALIA AND FRENCH POLYNESIA



PLANNING ITINERARIES THAT ARE TOO BROAD AND LACK COHERENCE

One of the most common mistakes is trying to include too many Australian regions and too many Polynesian islands within the same trip. In Australia, for example, combining Sydney, Uluru, the Great Ocean Road, and Tasmania in just a few days means ignoring the continent's real distances. Similarly, in French Polynesia, attempting to link Tahiti, Bora Bora, Rangiroa, and the Marquesas in a tight sequence often results in a fragmented itinerary. A well-designed journey works better when focused on a few selected regions, allowing space for longer stays and a higher quality experience.

UNDERESTIMATING DISTANCES AND TRANSFER STRUCTURE

Another mistake is failing to account for actual travel times. In Australia, domestic connections often require long-haul flights between cities and regions such as Sydney, Perth, or Darwin. In French Polynesia, inter-island transfers depend on limited flights or non-daily boat connections, which directly impact planning. Without careful time management, the risk is losing entire days to transfers alone.

NOT ALLOWING FOR LOCAL VARIABILITY IN CONDITIONS

In both destinations, environmental conditions strongly influence the journey. In Australia, climate shifts dramatically between the tropical north, the central desert, and the southern coasts. In French Polynesia, tides, wind, and tropical seasonality can affect activities and sea travel. A rigid itinerary reduces the ability to adapt to these natural variations, which are an essential part of the experience.

LIMITING THE JOURNEY ONLY TO ICONIC DESTINATIONS

A frequent mistake is focusing exclusively on Sydney and Melbourne in Australia, or Bora Bora and Moorea in French Polynesia. In reality, many of the most meaningful experiences are found elsewhere: regions such as Tasmania, Western Australia, or rural Queensland offer a very different Australia; similarly, lesser-known atolls and more remote islands in French Polynesia allow for a more authentic connection with local life.

UNDERESTIMATING THE ROLE OF ACCOMMODATION

In these territories, accommodation is not a secondary element. A lodge in the Australian Outback, an eco-retreat in Queensland's rainforest, or an overwater bungalow in Bora Bora are not simply places to stay, but an integral part of how the landscape is experienced. A choice that is not consistent with the context can significantly reduce the quality of the journey.

APPLYING THE SAME TRAVEL MODEL TO COMPLETELY DIFFERENT CONTEXTS

Australia and French Polynesia follow entirely different logics: the former is a continent defined by vast distances and complex infrastructure, the latter an insular system based on natural balance and limited mobility. Treating them as if they function in the same way leads to underestimating their true nature. A well-designed journey instead comes from respecting these differences, creating an itinerary that does not force the territories, but interprets them according to their real geographical and cultural structure.



QUALITY AND SERVICE UPDATES

The experiences and services presented in this brochure have been selected based on qualitative criteria focused on comfort, accessibility, and the personalization of the travel experience.

As operational conditions, dedicated services, and policies may be subject to updates or changes over time, each proposal will be reviewed and confirmed at the quotation stage, in order to ensure full alignment with the traveler's specific requirements and the expected quality standards.



AUSTRALIA – A CONTINENT SHAPED BY ANCIENT ABORIGINAL CULTURES, COLONIAL LAYERS, AND EXTREME LANDSCAPES CONNECTING INLAND DESERTS, OCEAN COASTLINES, AND REMOTE ISLANDS



Located between the Indian Ocean and the Pacific Ocean, Australia is a continental island distinguished by one of the world's most extensive and discontinuous territorial structures. Its geography is defined by a constant balance between extremely arid and desert inland areas, vast and densely populated coastal belts with diverse climates, tropical regions in the north, and remote island systems spread across different oceans. The Outback occupies much of the country's centre and is characterised by deserts, plateaus, and semi-arid environments, while the eastern and south-eastern coasts concentrate the main cities, infrastructure, and cultural systems. The north develops tropical environments and rainforests, while the south and south-east are defined by temperate and insular regions. This strong environmental discontinuity makes Australia a system of semi-autonomous territories, where each area presents profoundly different climatic and landscape characteristics. From a historical and cultural perspective, the Australian territory has been inhabited for over 60,000 years by Aboriginal peoples and Torres Strait Islanders, who developed a deep spiritual relationship with the land through the system of the "Dreaming", a worldview that connects landscapes, stories, and cultural identity. With the arrival of Europeans at the end of the 18th century, Australia entered a phase of British colonisation that led to the establishment of the first coastal cities and the introduction of new political and social structures. Over time, the country evolved into an independent federal and highly multicultural society, strongly influenced by European, Asian, and Oceanic cultures. This stratification has created a complex identity, in which major cities represent global modernity, while inland and remote areas maintain a more direct relationship with nature and Indigenous cultures.

The Australian territory can therefore be organised into macro-regions that group states and territories according to a coherent geographical and functional logic, also including the main islands and external territories:

- **EASTERN AUSTRALIA (NEW SOUTH WALES, VICTORIA, AUSTRALIAN CAPITAL TERRITORY)** – THIS MACRO-REGION CONCENTRATES THE HIGHEST URBAN AND CULTURAL DENSITY IN THE COUNTRY. NEW SOUTH WALES, WITH SYDNEY AS ITS MAIN CENTRE, EXTENDS ACROSS NATURAL BAYS, RUGGED COASTLINES, AND MOUNTAIN RANGES SUCH AS THE BLUE MOUNTAINS. VICTORIA, WITH MELBOURNE, REPRESENTS THE CULTURAL AND ARTISTIC HUB, WHILE THE AUSTRALIAN CAPITAL TERRITORY, WITH CANBERRA, SERVES AS THE INSTITUTIONAL AND POLITICAL CENTRE, DESIGNED AS A PLANNED CITY SET WITHIN A CONTROLLED NATURAL ENVIRONMENT
- **NORTHERN TROPICAL AUSTRALIA (QUEENSLAND, NORTH-EASTERN NORTHERN TERRITORY)** – THIS AREA IS DOMINATED BY TROPICAL AND SUBTROPICAL ENVIRONMENTS. QUEENSLAND, WITH BRISBANE AS ITS MAIN URBAN HUB, EXTENDS TO THE GREAT BARRIER REEF, ONE OF THE WORLD'S MOST COMPLEX MARINE ECOSYSTEMS, AND THE RAINFORESTS OF THE DAINTREE. THE NORTHERN NORTHERN TERRITORY INTRODUCES A MORE REMOTE AND WILD DIMENSION, WITH AREAS SUCH AS KAKADU NATIONAL PARK, WHERE WETLAND ECOSYSTEMS, ABORIGINAL ROCK ART, AND WILDLIFE COEXIST IN BALANCE.
- **CENTRAL AUSTRALIA (INLAND NORTHERN TERRITORY AND WESTERN OUTBACK OF SOUTH AUSTRALIA AND WESTERN AUSTRALIA)** – THIS REGION REPRESENTS THE DESERT HEART OF THE CONTINENT, DOMINATED BY EXTREME AND SYMBOLIC LANDSCAPES SUCH AS ULURU AND KATA TJUTA. IT IS CHARACTERISED BY LONG DISTANCES, EXTREMELY LOW POPULATION DENSITY, AND A STRONG ABORIGINAL CULTURAL PRESENCE. HERE, THE LANDSCAPE BECOMES AN IDENTITY ELEMENT RATHER THAN A SIMPLE GEOGRAPHICAL BACKDROP
- **SOUTHERN AUSTRALIA (SOUTH AUSTRALIA, SOUTH-WESTERN VICTORIA, AND INLAND REGIONS)** – THIS MACRO-REGION IS DEFINED BY A BALANCE BETWEEN CITIES, VINEYARDS, AND SEMI-ARID TERRITORIES. ADELAIDE IS THE MAIN CENTRE, SURROUNDED BY WINE REGIONS SUCH AS THE BAROSSA VALLEY AND CLARE VALLEY, WHILE PERIPHERAL AREAS OPEN TOWARDS LESS URBANISED DESERTS AND COASTLINES SUCH AS THE EYRE PENINSULA
- **WESTERN AUSTRALIA** – THE LARGEST AND MOST ISOLATED OF THE STATES, WITH PERTH AS ITS MAIN URBAN CENTRE. THE TERRITORY EXTENDS FROM THE AGRICULTURAL AND COASTAL SOUTH OF MARGARET RIVER TO THE NORTHERN KIMBERLEY REGION, CHARACTERISED BY CANYONS, SEASONAL RIVERS, AND REMOTE COASTLINES FACING THE INDIAN OCEAN. IT IS ONE OF THE LEAST DENSELY POPULATED AREAS IN THE WORLD RELATIVE TO ITS SIZE
- **TASMANIA (AUTONOMOUS ISLAND STATE)** – SEPARATED FROM THE MAINLAND BY THE BASS STRAIT, TASMANIA IS CHARACTERISED BY TEMPERATE FORESTS, MOUNTAINS, AND DEEPLY INDENTED COASTLINES. HOBART IS THE MAIN URBAN CENTRE, WHILE THE REST OF THE ISLAND IS DOMINATED BY NATURAL PARKS SUCH AS FREYCINET NATIONAL PARK AND CRADLE MOUNTAIN, WHERE NATURE REMAINS HIGHLY PRESERVED
- **EXTERNAL AUSTRALIAN TERRITORIES (NORFOLK ISLAND, CHRISTMAS ISLAND, COCOS (KEELING) ISLANDS, AND OTHER PACIFIC AND INDIAN OCEAN ATOLLS)** – THESE AREAS REPRESENT GEOGRAPHICAL AND ADMINISTRATIVE EXTENSIONS OF AUSTRALIA BUT WITH STRONG ENVIRONMENTAL AND CULTURAL AUTONOMY. NORFOLK ISLAND PRESERVES A COLONIAL HISTORY AND A GREEN OCEANIC LANDSCAPE IN THE SOUTH PACIFIC, WHILE CHRISTMAS ISLAND AND THE COCOS (KEELING) ISLANDS ARE ISOLATED TROPICAL ECOSYSTEMS IN THE INDIAN OCEAN, CHARACTERISED BY UNIQUE BIODIVERSITY AND LOW HUMAN IMPACT

From the perspective of connectivity and international access, Australia's airport system is organised into hubs that serve macro-regions and enable both entry into the continent and distribution across internal and external territories:

- **Sydney Airport** – The main gateway to eastern Australia and a major intercontinental hub connecting Asia, Europe, and the Americas, with direct links to Melbourne, Brisbane, and the rest of the country
- **Melbourne Airport** – The primary hub for the south-east and a strategic connection point for Tasmania, South Australia, and international routes
- **Brisbane Airport** – The main access point to Queensland and the Great Barrier Reef, with connections across the Pacific
- **Perth Airport** – A key hub for Western Australia and a direct link to the Indian Ocean and Southeast Asia
- **Darwin International Airport** – A strategic gateway to the Northern Territory and a connection point to Southeast Asia and the northern Outback
- **Canberra Airport** – Supporting the institutional system and domestic connections
- **Hobart Airport and Launceston Airport** – The main access points to Tasmania, with direct connections to the mainland
- **Regional and charter connections from Brisbane, Sydney, and Perth to external territories (Norfolk Island, Christmas Island, Cocos (Keeling) Islands), characterised by less frequent and highly regulated access**

In summary, Australia functions as a complex and deeply stratified continental system, where geography shapes culture, distance defines relationships between territories, and nature remains the dominant element connecting deserts, coastlines, and islands into a single yet highly articulated identity space.

PET-FRIENDLY JOURNEY BETWEEN ACCESSIBLE CITIES, OPEN COASTLINES, AND NATURE ACCESSIBLE WITH ANIMALS

THE PLACES AND EXPERIENCES FOR A JOURNEY WITH YOUR FOUR- LEGGED FRIENDS OFF THE BEATEN TRACK

In Australia, a pet-friendly journey can be shaped through urban and natural areas where access with animals is permitted and well regulated, favouring open spaces, coastal routes, and less congested rural settings. The experience unfolds between local culture, natural landscapes, and small communities, with a strong focus on everyday livability and the enjoyment of outdoor environments.

In New South Wales, the Central Coast region between Terrigal and Avoca Beach offers dog-friendly beaches and coastal walks immersed in nature. The Blue Mountains, in selected areas outside the main national park zones, also allow scenic walks in forested environments and villages such as Leura and Wentworth Falls, where nature remains the dominant feature.

In Victoria, the Mornington Peninsula is one of the most suitable areas, with designated dog-friendly beaches, vineyards, and coastal trails. The city of Melbourne also offers numerous urban parks such as Fitzroy Gardens and Albert Park, where the cultural urban dimension integrates with easily accessible green spaces.

In Queensland, the Sunshine Coast provides a balance between nature and livability, with areas such as the Noosa River and selected beaches where animals are allowed. The inland towns of Montville and Maleny add a hilly landscape of small cultural communities, local markets, and subtropical forests.

In South Australia, Adelaide is a particularly pet-friendly city, with parks such as the Adelaide Park Lands and the River Torrens Linear Park running through the city. The Fleurieu Peninsula region also offers beaches and coastal trails where animals are permitted in selected areas.

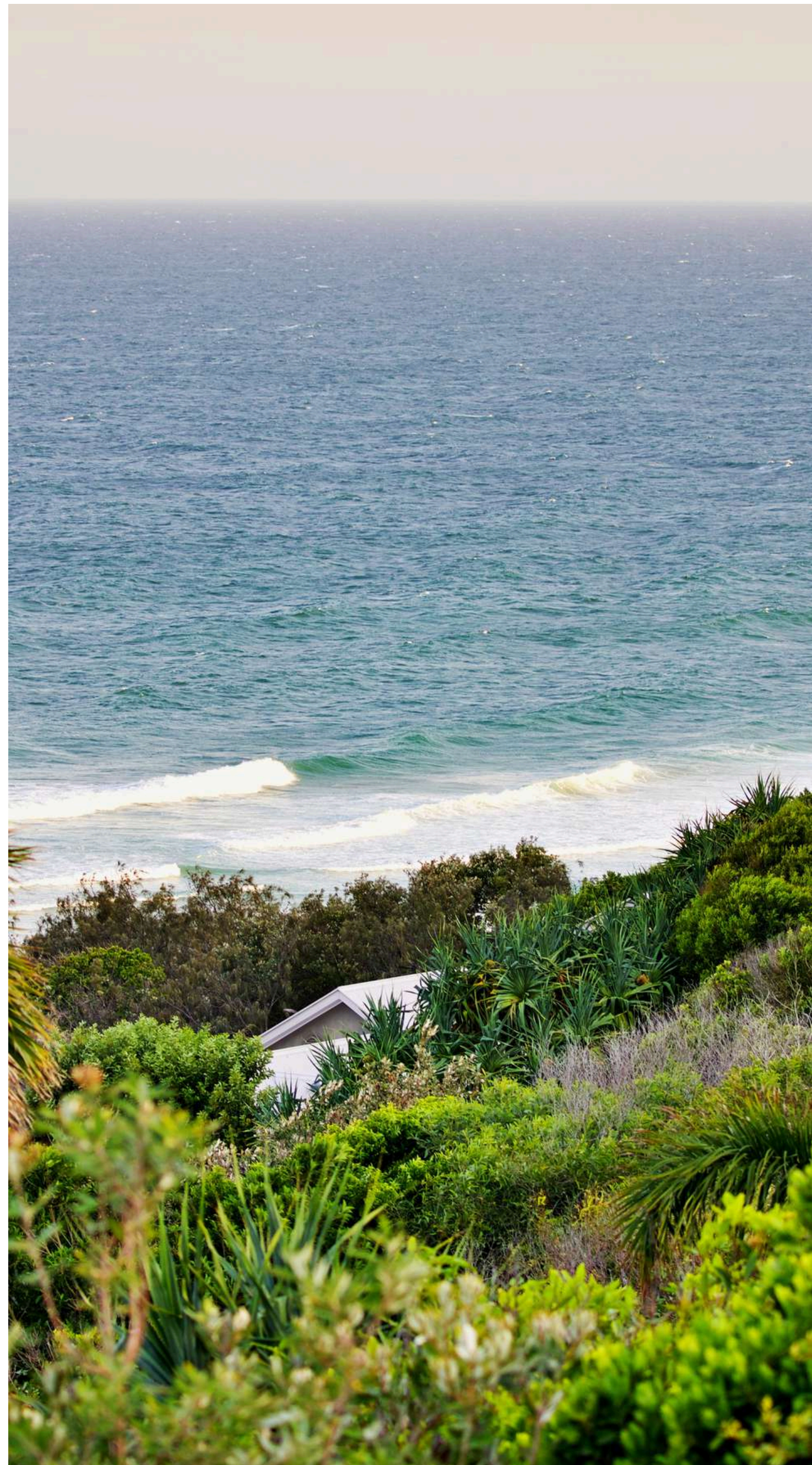
In Western Australia, Perth combines urban culture and accessible nature, with Kings Park and the South Perth Foreshore among the most suitable areas for walking with pets. The Margaret River region, outside more protected zones, also offers natural trails, vineyards, and small communities in a very relaxed setting.

In the Northern Territory, Darwin is one of the most pet-friendly cities in northern Australia, with the Waterfront Precinct and coastal urban parks. Some rural areas nearby also allow guided nature experiences in open and uncrowded environments.

In Tasmania, the Hobart region and the Derwent Valley offer a highly suitable setting, with parks, coastal trails, and small rural communities. Bruny Island, in selected accessible areas, also provides an experience combining nature, local culture, and ocean landscapes.

Some selected external territories can also be considered. On Norfolk Island, the small scale, low tourism density, and abundance of open natural spaces make it a suitable destination for a pet-friendly journey, with a slow pace and a strong landscape focus.

A pet-friendly journey in Australia unfolds through well-organised cities, accessible coastlines, and rural territories where open spaces allow for a flexible and natural experience. It is a journey that combines urban culture, coastal landscapes, and nature, always maintaining a balance between comfort, freedom, and direct contact with the environment.





DID YOU KNOW?

Australia is one of the few countries in the world that also constitutes an entire continent. This means that within its borders coexist completely distinct ecosystems, ranging from the tropical climate of the north to the semi-arid central deserts and the temperate regions of the south.

The Australian Outback covers around 70% of the national territory, yet it is home to a very small percentage of the population. As a result, the country's interior is among the most vast and sparsely populated spaces on Earth, where distances between settlements can easily exceed hundreds of kilometres.

The Great Barrier Reef, off the coast of Queensland, is the largest coral reef system in the world and can even be seen from space. Stretching for over 2,300 kilometres, it represents a marine ecosystem of global importance in both biological and climatic terms.

Australia has one of the oldest continuously living Indigenous cultures in the world, with origins dating back more than 60,000 years. Many areas of the territory are not only natural landscapes but also cultural and spiritual sites connected to the "Dreaming," a worldview that interprets the land as a living map of stories and identity.

Australia's external territories, such as Christmas Island and the Cocos (Keeling) Islands in the Indian Ocean and Norfolk Island in the Pacific, lie thousands of kilometres from the mainland. They function as administrative extensions of the country, yet maintain completely distinct ecosystems and geographical identities.

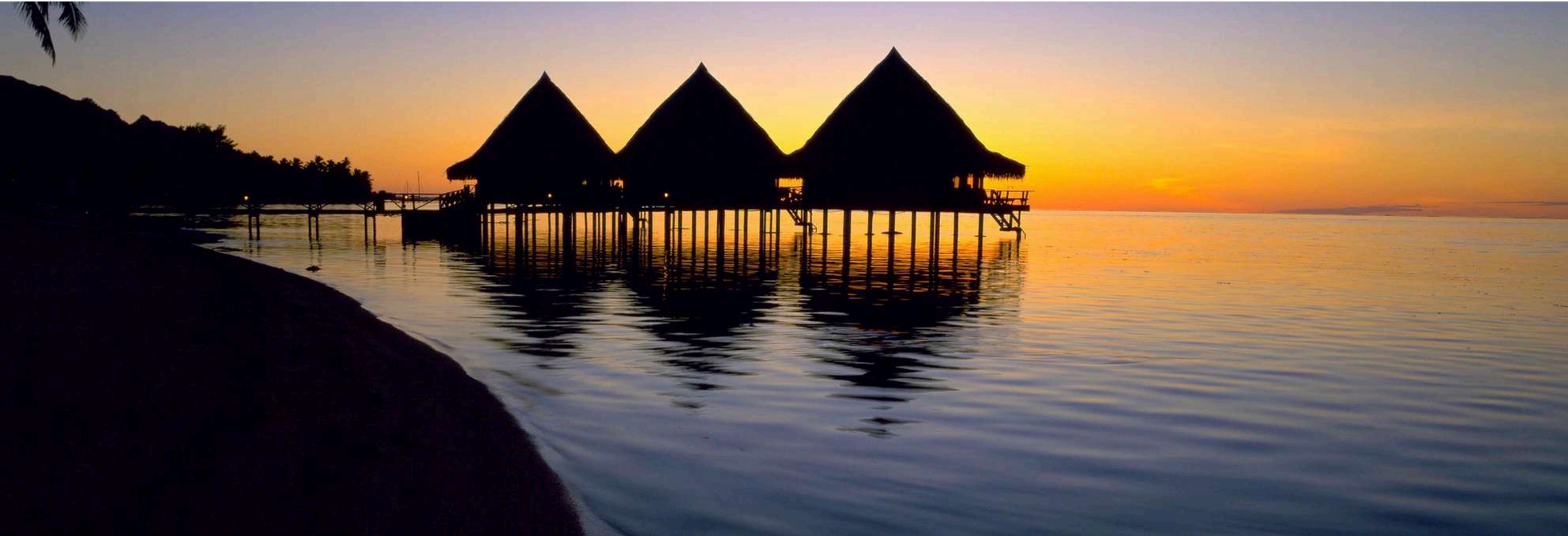
Australia is among the countries with the highest levels of endemic biodiversity in the world. Many animals and plants, such as the koala and the kangaroo, exist nowhere else on Earth. In some regions—especially during the warmer and more humid months—there is also the so-called "spider season," when certain species become more visible even in urban or domestic environments. The country is also home to a highly diverse fauna that includes potentially dangerous species, such as certain snakes, box jellyfish in the tropical northern waters, and marine life such as the great white shark along some coastlines. These elements are part of the natural ecosystem but require awareness in specific environments and seasons.

The road network in the Outback includes some of the longest and straightest highways in the world, where it is possible to travel hundreds of kilometres without encountering towns, service stations, or major intersections.

Many Australian natural landmarks, such as Uluru, are not only scenic attractions but also culturally protected sites for Aboriginal communities, with regulated access or interpretive guidelines designed to respect their spiritual and cultural significance.



FRENCH POLYNESIA – A SYSTEM OF ARCHIPELAGOS SCATTERED ACROSS THE PACIFIC OCEAN, BETWEEN POLYNESIAN CULTURE, VOLCANIC LANDSCAPES, AND REMOTE CORAL ATOLLS



Located in the South Pacific, French Polynesia is an overseas collectivity of France made up of five major island groups spread across an immense oceanic area rather than a continuous landmass. Its geographic structure is fragmented into archipelagos separated by thousands of kilometres, immersed in the central and southeastern Pacific Ocean. This dispersion creates a territorial system in which the sea is not a dividing element, but the true connective infrastructure between the islands. From a geographical perspective, the territory is divided between high volcanic islands and low-lying coral atolls. The high islands feature mountainous reliefs, inland valleys, short rivers, and rugged coastlines, while the atolls are characterised by protected lagoons and thin rings of coral land. The climate is tropical, with slight variations depending on exposure to trade winds, which influence vegetation, settlement patterns, and population density. From a historical and cultural perspective, French Polynesia results from the layering of ancient Polynesian navigational cultures, present for over a thousand years, and European influence from the 18th and 19th centuries. Traditional societies were organised around complex tribal and religious systems, with a strong connection between land, sea, and genealogy. Later, French and missionary influence introduced a modern administrative structure that coexists with local traditions, still visible today in villages, language, and cultural practices.

The territory is structured into several main island groups, each representing distinct but interconnected geographical systems:

- **SOCIETY ISLANDS (ÎLES DE LA SOCIÉTÉ) – THE MAIN CORE OF THE ARCHIPELAGO, DIVIDED INTO WINDWARD AND LEEWARD ISLANDS. THIS GROUP INCLUDES TAHITI, THE ADMINISTRATIVE AND CULTURAL CENTRE WITH PAPEETE, AND MOOREA, KNOWN FOR ITS VOLCANIC PEAKS AND ACCESSIBLE LAGOONS. THE LEEWARD ISLANDS INCLUDE BORA BORA, HUAHINE, RAIATEA, AND TAHA'A, WHICH SHARE A SIMILAR LAGOON STRUCTURE BUT MAINTAIN DISTINCT IDENTITIES AND LANDSCAPES**
- **TUAMOTU ARCHIPELAGO – A VAST COLLECTION OF CORAL ATOLLS SPREAD ACROSS AN EXTENSIVE OCEANIC AREA. ATOLLS SUCH AS RANGIROA AND FAKARAVA FEATURE DEEP LAGOONS, OCEAN PASSAGES, AND SMALL COASTAL VILLAGES, WITH VERY LOW POPULATION DENSITY AND A STRONG DEPENDENCE ON FISHING AND THE SEA**
- **MARQUESAS ISLANDS (ÎLES MARQUISES) – A GROUP OF HIGH, MOUNTAINOUS ISLANDS MORE ISOLATED THAN OTHER REGIONS. HIVA OA INCLUDES THE VILLAGE OF ATUONA AND THE MUSÉE PAUL GAUGUIN, SET WITHIN DRAMATIC VOLCANIC VALLEYS AND CLIFFS. IT IS ONE OF THE MOST REMOTE AREAS IN ALL OF FRENCH POLYNESIA**
- **AUSTRAL ISLANDS (ÎLES AUSTRALES) – A SOUTHERN GROUP LESS KNOWN AND LESS TOURISTIC, INCLUDING ISLANDS SUCH AS RURUTU AND TUBUAI. THESE ISLANDS FEATURE A COOLER CLIMATE, SOFTER RELIEFS, AND A STRONG AGRICULTURAL AND COMMUNITY-BASED LIFESTYLE**
- **GAMBIER ISLANDS – AN ISOLATED GROUP IN THE FAR SOUTHEAST OF FRENCH POLYNESIA, WITH MANGAREVA AS THE MAIN ISLAND. IT IS CHARACTERISED BY MISSIONARY HISTORY, INNER LAGOONS, AND VOLCANIC PEAKS COVERED IN TROPICAL VEGETATION**

From a connectivity perspective, the system is highly centralised:

- **Faa'a International Airport in Tahiti serves as the main international hub of French Polynesia, connecting the archipelago with North America, Europe, and other Pacific islands. From here, domestic flights link Moorea, Bora Bora, the Tuamotu, the Marquesas, and other remote islands through a minimal but essential air network that ensures inter-archipelago mobility**

In summary, French Polynesia is a fragmented yet coherent oceanic system, where distance between islands defines territorial identity as much as their physical form. It is a space dominated by the ocean, where Polynesian culture, volcanic structures, and coral atolls create a unique balance between isolation, nature, and cultural continuity.

PET-FRIENDLY JOURNEY BETWEEN LAGOONS, LOCAL VILLAGES, AND OPEN OCEAN NATURE

THE PLACES AND EXPERIENCES FOR A JOURNEY WITH YOUR FOUR- LEGGED FRIENDS OFF THE BEATEN TRACK

In French Polynesia, a pet-friendly journey is possible only in a selective and carefully organised form, favouring main islands, independent accommodations, and open natural environments where the presence of pets can be managed with greater flexibility. The experience is built around lightly urbanised spaces, outdoor routes, and hospitality structures that accept pets upon prior request, while avoiding the most sensitive areas and remote atolls.

Tahiti is the most suitable starting point, thanks to its wider availability of services and infrastructure. The western coastal areas between Punaauia and Paea offer open spaces, waterfront walks, and access to more flexible accommodation options. Some inland rural zones also allow experiences in volcanic nature with uncrowded, open trails.

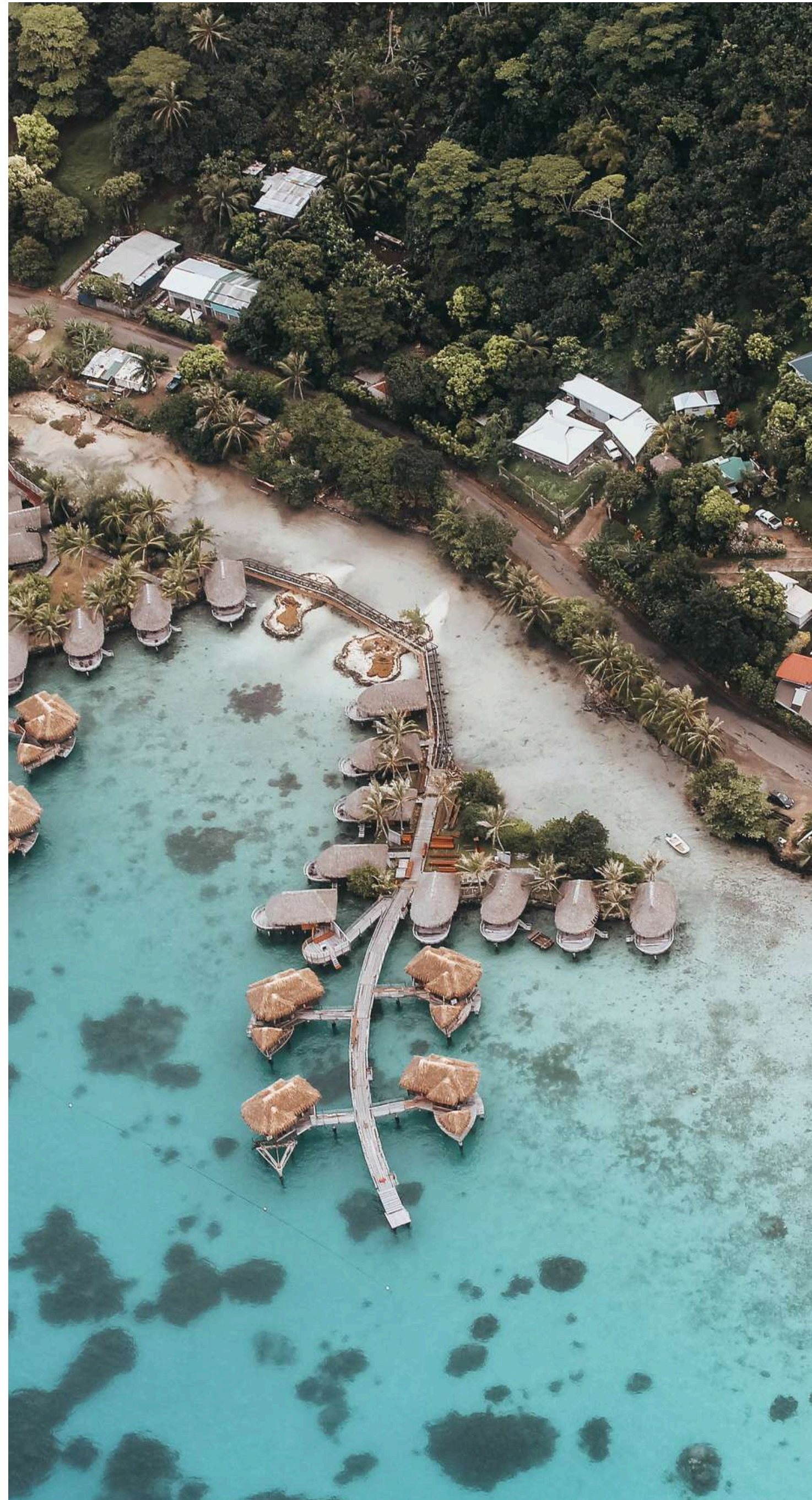
Moorea is one of the most suitable islands due to its uncrowded beaches, coastal paths, and small villages where life moves at a slow and informal rhythm. Areas such as Temae and Opunohu provide wide natural settings, while some family-run accommodations may accept pets upon request.

In Huahine, the journey unfolds in a highly authentic and lightly touristic environment, where daily life in villages such as Fare follows a natural rhythm. Coastal roads and rural areas allow walks in open landscapes, offering strong contact with both nature and the island's everyday culture.

In Raiatea and Taha'a, the experience is centred on rural and lagoon environments where small settlements and open spaces allow for more flexible travel conditions. Vanilla plantations and less developed coastal areas provide quiet, uncrowded surroundings.

In Bora Bora, pet-friendly travel is limited to selected accommodations on the main island and some less touristic areas outside the central lagoon. Inland zones and secondary routes allow for a more private experience compared to the well-known lagoon circuits.

The Tuamotu Archipelago is generally not suitable for travelling with pets due to its isolation and the environmental fragility of the atolls, which require stricter regulations to protect the ecosystem.





DID YOU KNOW?

French Polynesia is made up of more than 100 islands scattered across an expanse of ocean larger than the whole of Europe, yet with a very limited land area. As a result, the sea is the dominant element both geographically and in everyday life.

The territory is divided into several island groups that differ greatly from one another: high volcanic islands such as Tahiti and Moorea, and low coral atolls such as those of the Tuamotu Archipelago, which were formed on top of ancient volcanoes that have since subsided beneath the ocean.

The distances between the islands are so vast that many domestic connections are possible only by air, with Faa'a International Airport serving as the main hub. This makes the transportation network one of the most fragmented in the Pacific.

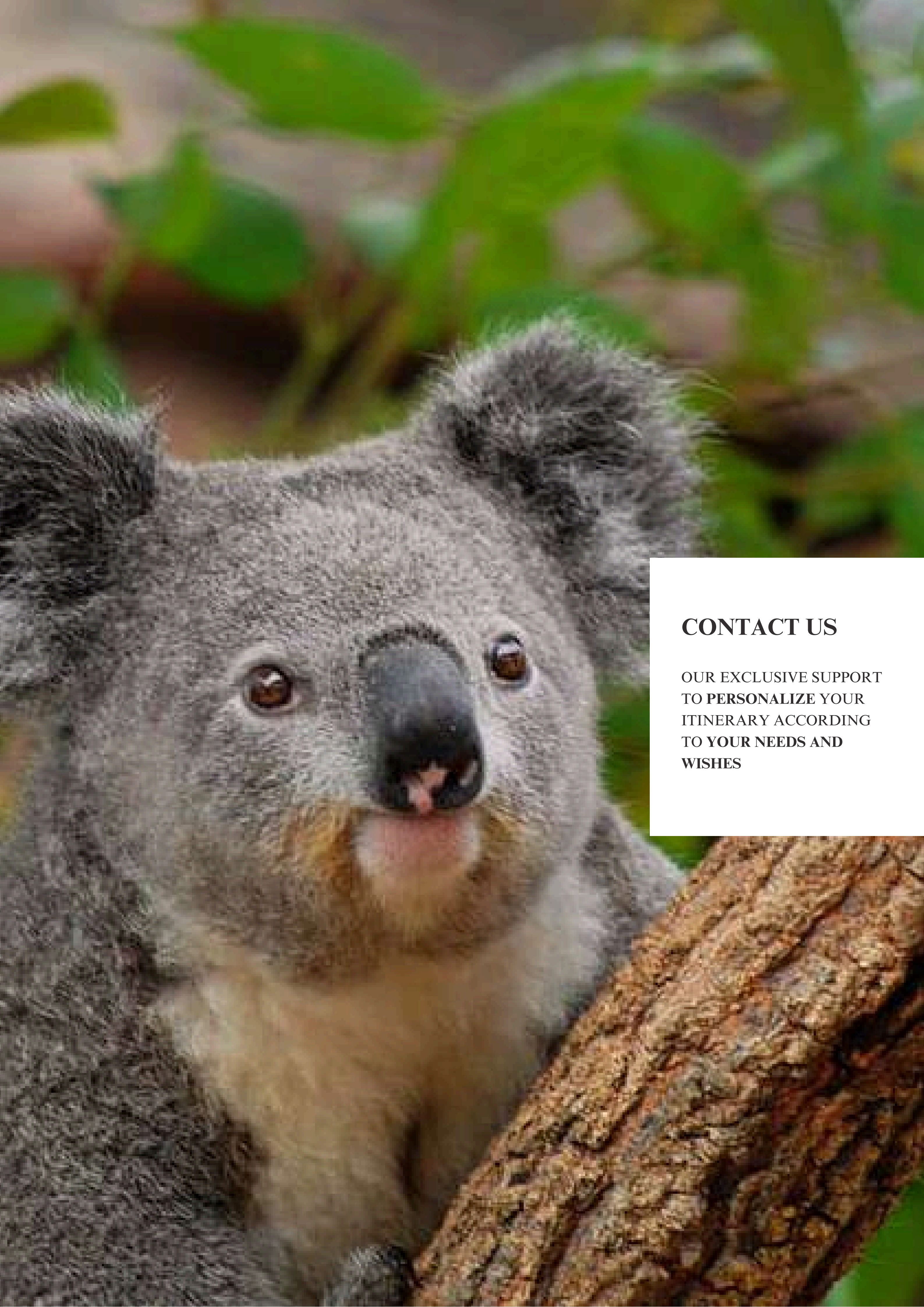
Traditional Polynesian culture is deeply rooted in oral traditions and genealogy. The history of families, clans, and oceanic migrations plays a central role in social organization and the formation of collective identity.

Some atolls in the Tuamotu Archipelago contain lagoons so vast and isolated that they support nearly self-contained marine ecosystems, with ocean passes regulating the exchange of water between the lagoon and the open sea.

In the Marquesas Islands, particularly on Hiva Oa, the landscape is remote and mountainous, featuring villages nestled in deep valleys, steep coastlines, and strong cultural and practical ties to the ocean.

The Austral Islands are the coolest part of the archipelago, with lower temperatures than those found on Tahiti and a stronger agricultural focus.

Some marine species inhabiting Polynesian waters thrive in exceptionally well-preserved ecosystems thanks to the region's low level of urbanization. This makes many areas ideal for diving, provided that the often-changing ocean conditions are carefully respected.



CONTACT US

**OUR EXCLUSIVE SUPPORT
TO PERSONALIZE YOUR
ITINERARY ACCORDING
TO YOUR NEEDS AND
WISHES**



WOULD YOU LIKE TO REQUEST A QUOTE?

We hope this travel planner has been of interest to you and has provided inspiration for your next journey.

If you would like to organize your next trip, please click on the “Itinerary and Quotation Request” button.

Complete and submit the form, and we will contact you shortly to create your personalized travel quotation.

ITINERARY AND QUOTATION REQUEST



Atlantic Travel & Tours Ltd

London, New York
Los Angeles, Miami
Denver

ATLANTIC TRAVEL & TOURS LTD

HEADQUARTERED IN THE UNITED STATES AND THE UNITED KINGDOM

REGISTERED COMPANIES

USA - DENVER - COLORADO - COMPANY REGISTRATION NUMBER: 202 110 96 014

UK - LONDON - COMPANY REGISTRATION NUMBER: 130 288 33

E-MAIL

USA - unitedstatesadministration@atlantictourstravel.com

UK - unitedkingdomadministration@atlantictourstravel.com

WEBSITE

www.visitatlantictraveltours.com

FULL CONTACT DETAILS

www.visitatlantictraveltours.com/contact