

# ATLANTIC TRAVEL & TOURS

EDUCATIONAL TRAVELS FOR SCHOOLS,  
UNIVERSITIES, CULTURAL INSTITUTIONS

---

## BERMUDA INSPIRATIONAL BROCHURE



## FROM THE CEO

---

Dear educators, researchers, and cultural professionals,

Atlantic Travel & Tours is your dedicated partner in organizing **tailor-made journeys** for **secondary schools, universities, and cultural institutions**. This brochure presents a curated selection of **interdisciplinary itineraries** across Bermuda, designed to meet the specific needs of each type of organization:

- **Secondary Schools - Dynamic and exploratory educational journeys**
- **Universities - In-depth research and experiential learning opportunities**
- **Cultural Institutions - Cultural exchange and heritage-focused projects**

Each itinerary is crafted to foster active learning and engagement, combining **innovative content with authentic places**.

We understand that every group has different goals and timelines. That's why we offer **full customization of duration, themes, and activities**—ensuring a truly unique and tailored experience.

Our team will support you at every stage, from planning to execution, guaranteeing **flexibility, high-quality service, and strong educational value**.

Choose Atlantic Travel & Tours to turn your journeys into memorable experiences of growth and exchange.



*Steve Tabacchi*

DR. STEVE TABACCHI  
CEO - FOUNDER  
ATLANTIC TRAVEL & TOURS

# B E R M U D A

## **BETWEEN ISOLATED GEOGRAPHIES, SUBMERGED HERITAGES AND ATLANTIC IDENTITIES**

Bermuda, nestled between North America and Europe, is much more than a tourist destination: it is a unique study laboratory for those who explore the connections between environment, history, and society. Secondary schools can explore the archipelago through educational itineraries focused on marine biodiversity, colonial architecture, and stories of resistance. Universities find fertile ground for deepening research on island urbanization, environmental sustainability, and Atlantic history. Cultural institutions can collaborate with archives, museums, and research centers to design initiatives that intertwine historical narratives, Afro-descendant culture, and oceanic memory. Bermuda thus proves to be a valuable place for educational programs that combine knowledge, awareness, and global participation





## WESTERN BERMUDA

### SANDYS, SOUTHAMPTON, WARWICK

An area rich in coastal landscapes, historic lighthouses, and protected natural sites, Western Bermuda is a gateway to the archipelago, combining maritime heritage and ecological innovation. Here, a colonial past meets coastal environmental experimentation. Small local communities foster cultural projects tied to the region.

**Secondary schools:** can explore educational paths on marine biodiversity, port history, and coastal ecology through outdoor activities.

**Universities:** they can initiate interdisciplinary studies in collaboration with local centers on climate change, coastal management, and marine energy.

**Cultural institutions:** can collaborate with community archives, historic lighthouses, and local foundations on projects that bring together heritage, environment, and material culture.



## CENTRAL BERMUDA

### PAGET, PEMBROKE, DEVONSHIRE

The beating heart of the archipelago, the central area is home to the capital, Hamilton, and some of the main museums, cultural institutions, and educational centers. Here, global flows and local practices intersect, striking a balance between cosmopolitanism and local roots. It is the densest and most connected area of the entire archipelago.

**Secondary schools:** can participate in workshops on global citizenship, colonial architecture, and contemporary artistic languages in urban centers.

**Universities:** can conduct research on island urbanization, cultural policies, and migration dynamics, in synergy with academic institutions and museums.

**Cultural institutions:** they can launch projects with museums, foundations, and archives on urban memory, Afro-descendant culture, and island urban resilience.



## EASTERN BERMUDA

### ST. GEORGE'S, HAMILTON PARISH, SMITH'S PARISH

A historic area par excellence, with St. George's—a UNESCO World Heritage Site—and a strong connection to maritime tradition, Bermuda's East Coast also boasts protected natural areas and botanical gardens. It's a region where colonial memory, biodiversity, and oceanic spirituality intertwine.

**Secondary schools:** can follow courses on colonial history, ancient navigation, and environmental enhancement in parks and nature reserves.

**Universities:** can explore topics related to Atlantic history, sustainable ecotourism, and historical cartography in collaboration with local authorities.

**Cultural institutions:** can develop projects with historical archives and museums on transatlantic storytelling and the preservation of ocean heritage.



# BETWEEN SUBMERGED LANDSCAPES, COLONIAL MEMORIES AND OCEAN RESEARCH

## AN INTERDISCIPLINARY JOURNEY TO BERMUDA

Bermuda offers a unique educational itinerary, where nature, history, and science are deeply intertwined. From the National Museum of Bermuda to the Bermuda Institute of Ocean Sciences, passing through the villages of Dockyard and St. George's, each stop invites exploration of the archipelago's cultural and environmental transformations. Secondary schools can develop critical thinking through workshops on sustainability, history, and citizenship. Universities find an ideal setting here to explore issues related to climate change, marine biodiversity, and the decolonization of knowledge. Cultural institutions access museum networks, research centers, and local communities to plan interdisciplinary initiatives. The itinerary selects iconic and accessible locations, promoting a lively dialogue between the past, present, and future of the Atlantic.

### DAY 1 – HAMILTON: BETWEEN URBAN ART AND CULTURAL IDENTITY

The journey begins in Bermuda's vibrant heartland, **Hamilton**, where colonial history and contemporary life intertwine. Activities will take place at the **Bermuda National Gallery**, a dynamic center that houses local and international collections and promotes art education.

**Secondary schools:** will participate in a creative workshop on the theme of identity through art and collage inspired by the island's history.

**University:** they will analyze post-colonial dynamics and the construction of Bermudian cultural identity through art collections.

**Cultural institutions:** will meet with curators to plan cultural exchanges on inclusive exhibition practices.

### DAY 2 – ROYAL NAVAL DOCKYARD: BETWEEN MARITIME HISTORY AND SOCIAL TRANSFORMATION

The **Royal Naval Dockyard**, now converted into a cultural and tourism center, preserves memories related to the British presence and forced labor. Activities will be held at the **National Museum of Bermuda**.

**Secondary schools:** will participate in educational programs on slavery, labor, and community resilience.

**University:** they will analyze the impact of military structures on the island's social geography and urban transformation.

**Cultural institutions:** will collaborate with historians and curators to design restitution and participatory museography programs.

### DAY 3 – ST. GEORGE'S: UNESCO HERITAGE AND COLONIAL MEMORY

The archipelago's former capital and a UNESCO World Heritage site, **St. George's** is a living laboratory of Atlantic history. Activities will be held at the **Old State House** and the **Historic Society Museum**.

**Secondary schools:** will explore the history of the settlement and the island's role in colonial trade through role-playing games and guided tours.

**Universities:** will explore the relationship between public space and colonial power through comparative studies.

**Cultural institutions:** will participate in workshops on the sustainable valorization of historical heritage with local experts.



### DAY 4 – BERMUDA INSTITUTE OF OCEAN SCIENCES (BIOS): ENVIRONMENT, RESEARCH, AND SUSTAINABILITY

**BIOS** is one of the world's most advanced centers for ocean and climate change research. Activities will take place on the campus overlooking Ferry Reach.

**Secondary schools:** will participate in scientific workshops on marine biodiversity and environmental monitoring.

**University:** will conduct applied research sessions with BIOS scientists on climate, ocean plastic, and acidification.

**Cultural institutions:** will engage with researchers to build cultural narratives on oceans, territories, and participatory science.

### DAY 5 – COOPER'S ISLAND: NATURE RESERVE AND LANDSCAPE OF REMEMBRANCE

This former military base is now a protected area that combines environmental restoration and historical memory. Activities will take place in the visitor center and along the nature trails.

**Secondary schools:** will create emotional maps and creative workshops on the relationship between environment and memory.

**University:** they will study environmental conservation practices in post-military contexts.

**Cultural institutions:** will collaborate with environmental and historical experts to design multimedia narrative tools.

### DAY 6 – SPITAL POND & JOHN SMITH'S BAY: ECOLOGY, ART, AND COMMUNITY PRACTICES

Among the most ecologically significant areas, **Spital Pond** is also a site of rock art and cultural memory. Activities will take place between the historic site of **Portuguese Rock** and the beaches of **John Smith's Bay**.

**Secondary schools:** will participate in excursions and land art workshops inspired by local ecosystems.

**University:** they will analyze biodiversity protection strategies in island contexts.

**Cultural institutions:** will work with nature guides and local artists to create visual narratives about nature and belonging.

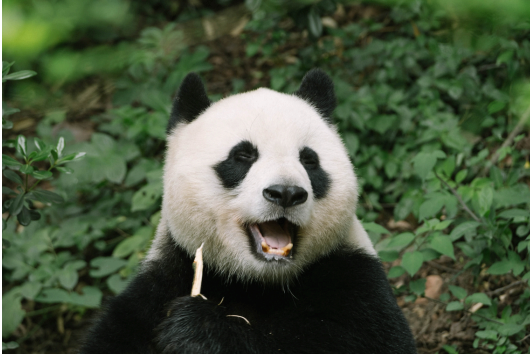


## WOULD YOU LIKE TO REQUEST A QUOTE?

We hope this brochure has been both enjoyable and inspiring for your next cultural-themed journey.

If you'd like to organize a trip with us, simply click the button below — you'll be directed to a form to fill out with all the necessary details. We'll get back to you shortly with a personalized quote tailored to your needs.

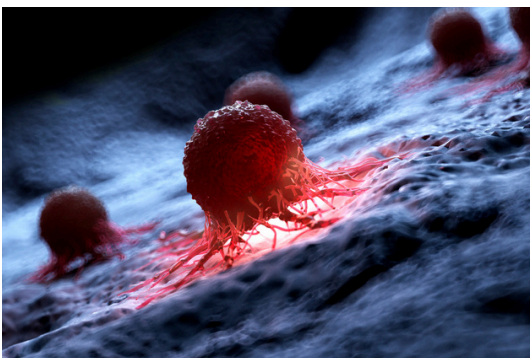
[QUOTE REQUEST](#)



## **OUR SUPPORT FOR SAFEGUARDING THE PLANET AND CANCER RESEARCH**



WITH OUR TRAVELS, WE WANT TO OFFER OUR CUSTOMERS THE OPPORTUNITY TO CONTRIBUTE TO NON-PROFIT ORGANIZATIONS COMMITTED TO SOLVING THE FOLLOWING GLOBAL PROBLEMS



- CONSERVATION OF FLORA - FAUNA
- GLOBAL WARMING
- CANCER RESEARCH



# Atlantic Travel & Tours Ltd

London, New York  
Los Angeles, Miami  
Denver

## **ATLANTIC TRAVEL & TOURS LTD**

**HEADQUARTERED IN THE UNITED STATES AND THE UNITED KINGDOM**

### **REGISTERED COMPANIES**

USA - DENVER - COLORADO - COMPANY REGISTRATION NUMBER: 202 110 96 014

UK - LONDON - COMPANY REGISTRATION NUMBER: 130 288 33

### **E-MAIL**

USA - [unitedstatesadministration@atlantictourstravel.com](mailto:unitedstatesadministration@atlantictourstravel.com)

UK - [unitedkingdomadministration@atlantictourstravel.com](mailto:unitedkingdomadministration@atlantictourstravel.com)

### **WEBSITE**

[www.visitatlantictraveltours.com](http://www.visitatlantictraveltours.com)

### **FULL CONTACT DETAILS**

[www.visitatlantictraveltours.com/contact](http://www.visitatlantictraveltours.com/contact)