

ATLANTIC TRAVEL & TOURS

CARIBBEAN

PET-FRIENDLY TRAVEL

**DISCOVER THE CARIBBEAN WITH YOUR PET:
RELAXATION AND FUN WITHOUT LIMITS**



WWW.VISITATLANTICTRAVELTOURS.COM

FROM THE CEO - FOUNDER

Dear travelers,

Imagine a journey where you are never alone: your four-legged companion walks beside you every step of the way, sharing every discovery, every city view, and every corner of nature. Each experience becomes a moment to enjoy together, filled with authentic emotions and companionship, with the joy of exploring side by side.

Picture peaceful walks along quiet beaches, sunlit waterfronts, parks, and scenic trails immersed in nature, **where your pet can move freely and safely**. Imagine charming small towns, cafés, and local markets welcoming both you and your dog or cat, **creating memories that will forever remain part of your story**.

This brochure is an invitation **to explore, to be inspired**, and to imagine every experience as a special moment to share together. Each page offers atmospheres, ideas, and carefully selected details designed to make you feel **free, comfortable, and fully immersed in the beauty of each destination**.

Open these pages, **let yourselves be carried away by emotion**, and begin planning a pet-friendly journey that belongs as much to your companion as it does to you — an unforgettable adventure to experience together.



Steve Tabacchi

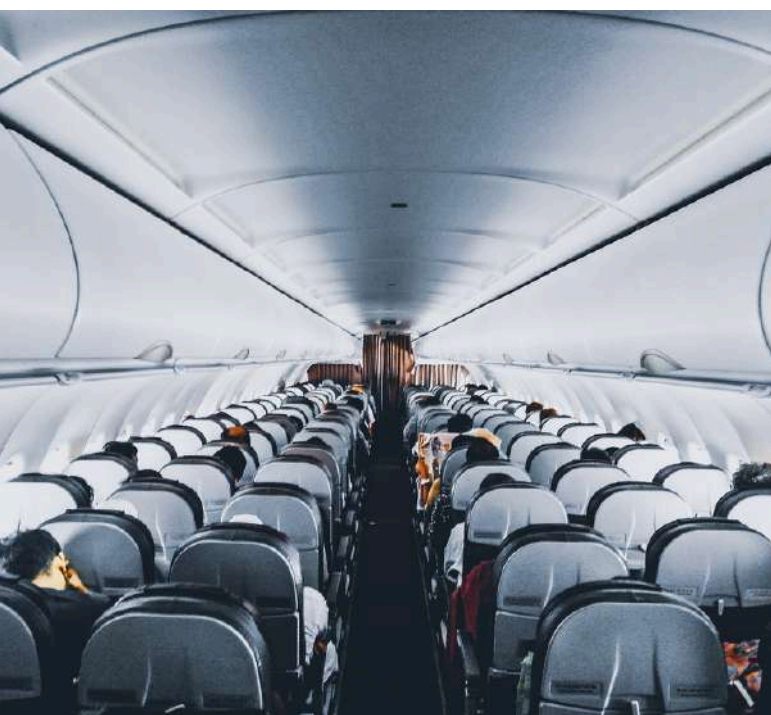
DR. STEVE TABACCHI
CEO - FOUNDER
ATLANTIC TRAVEL & TOURS



WHY TRAVEL WITH US

**DISCOVER WHY OUR
TOUR OPERATOR IS
UNIQUE AND
UNRIVALED!**

BESPOKE TRAVEL FOR EVERYONE



OUR TRAVEL ITINERARIES

We exclusively curate itineraries for innovative and original travel experiences that diverge from the conventional paths of mass tourism. Our aim is for each customer to be the protagonist of their own journey.

OUR TRAVEL CLASSES

We arrange travel for the following categories:

- **FIRST**
- **PREMIUM**
- **ECONOMY**

WE ORGANIZE ITINERARIES USING THE FOLLOWING TRANSPORTS



CAR

- ✓ RENTAL



VAN

- ✓ RENTAL WITH DRIVER
- ✓ SCHEDULED TOURS WITH DRIVER



COACH

- ✓ RENTAL WITH DRIVER
- ✓ SCHEDULED TOURS WITH DRIVER



BOAT

- ✓ RENTAL



SCOOTER

- ✓ CHARTER SERVICES
- ✓ TAILOR MADE TRAVEL ITINERARIES

PRIORITY CHECK-IN AND CHECKED BAGGAGE

Bid farewell to lengthy check-in queues! With our priority check-in service, you can swiftly obtain your boarding pass and check in your baggage. We are consistently prepared to provide this option, contingent upon airline availability, to enhance your travel experience, whether you are flying in premium or economy class. **Do not squander time; opt for comfort!**



NO QUEUES AT THE AIRPORT WITH THE FAST TRACK SERVICE



We understand the frustration of enduring lengthy waits at airport security. Therefore, we consistently incorporate fast track access into our travel packages, allowing you to bypass the queue and enjoy a stress-free experience.

The service is contingent upon the availability at each airport, thus we cannot assure its constant accessibility. Nevertheless, we are pleased to announce that it has been implemented in the majority of the airports we utilize. **Seize this opportunity!**





COMFORT IN AIRPORT LOUNGES

Once reserved solely for business and first-class passengers, airport lounges are now available to travelers in other classes as well. We provide the highest level of comfort and luxury to ensure your airport experience is memorable. In our travel packages, we consistently strive to include access to these exclusive areas at both departure and arrival points (subject to airport and airline availability). Relax, indulge in culinary delights, savor fine beverages, and enjoy refreshing showers, all within elegant and tranquil settings. **Seize this exceptional opportunity!**









OTHERS SERVICES

OUR EXCEPTIONAL PARTNERSHIPS WITH DIVERSE SUPPLIERS ENABLE US TO PROVIDE OUR CUSTOMERS WITH THE FINEST OF THE FOLLOWING SERVICES

ADVANCED LUGGAGE SHIPPING
TOURIST VISAS
CURRENCY EXCHANGE
INSURANCE POLICIES



| | | |
|---|-----|--------|
|  | AUD | 7.01 |
|  | NZD | 5.05 |
|  | JPY | 0.0913 |
|  | GBP | 11.23 |
|  | EUR | 9.71 |
|  | SGD | 5.35 |
|  | CHF | 7.00 |



ALWAYS TRAVEL WITH A PREMIUM DISCOUNT!



-20%

- **ACTIVE YEAR-ROUND**
- **FOR ALL CATEGORIES OF TRAVELERS**
- **NO MINIMUM SPENDING THRESHOLD REQUIRED**



TRAVEL PHOTOGRAPHER

FOR AN UNFORGETTABLE TOUR
FOREVER



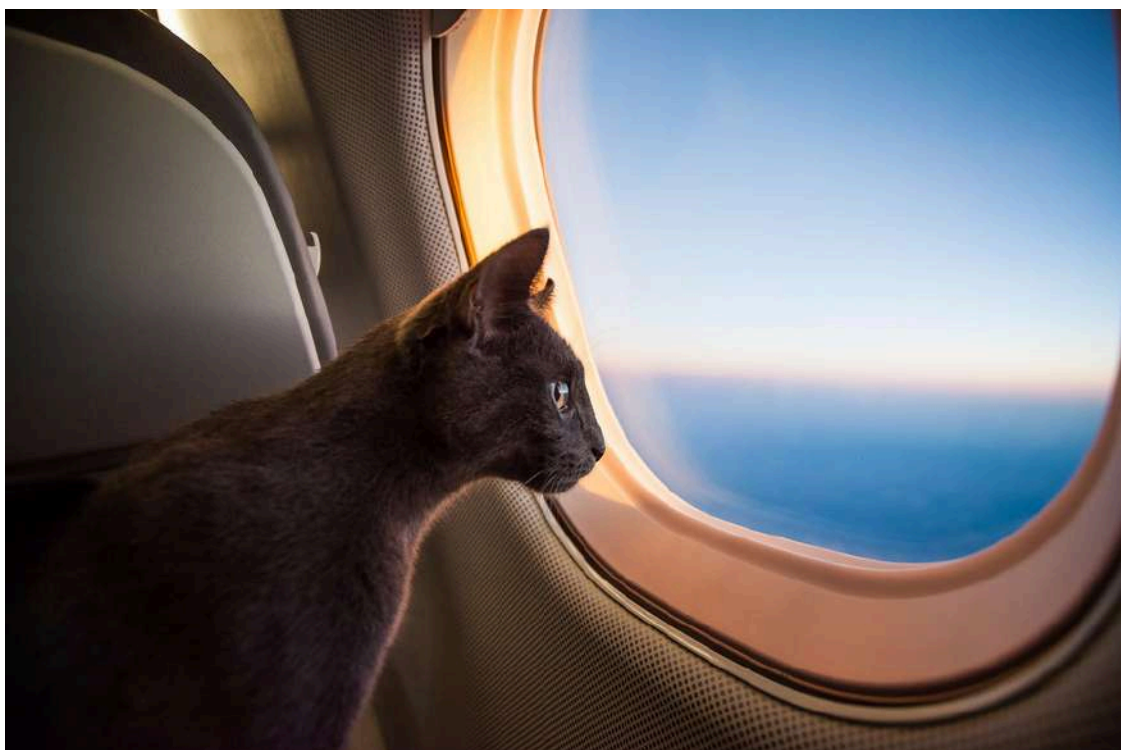
Certain journeys hold a unique significance: a honeymoon, a wedding anniversary marked by the renewal of vows, or cherished moments spent with close friends or family. Such beautiful occasions will be immortalized through professional photography and videography. Should you wish to incorporate this option into your upcoming trip, we are pleased to provide assistance with photographers who can transform your experience into a lasting memory.



ONE FREE INDIVIDUAL FOR EVERY 15 PAYING CUSTOMERS

Take advantage of our **perpetually active** promotion. If you can gather a **minimum of 15 individuals**, one person will receive a **complimentary** trip. Consider anyone who might be interested among family, friends, colleagues, or others. Additionally, if you require a tour leader or tour guide to assist you and your group throughout the entire tour, we can provide this service as well

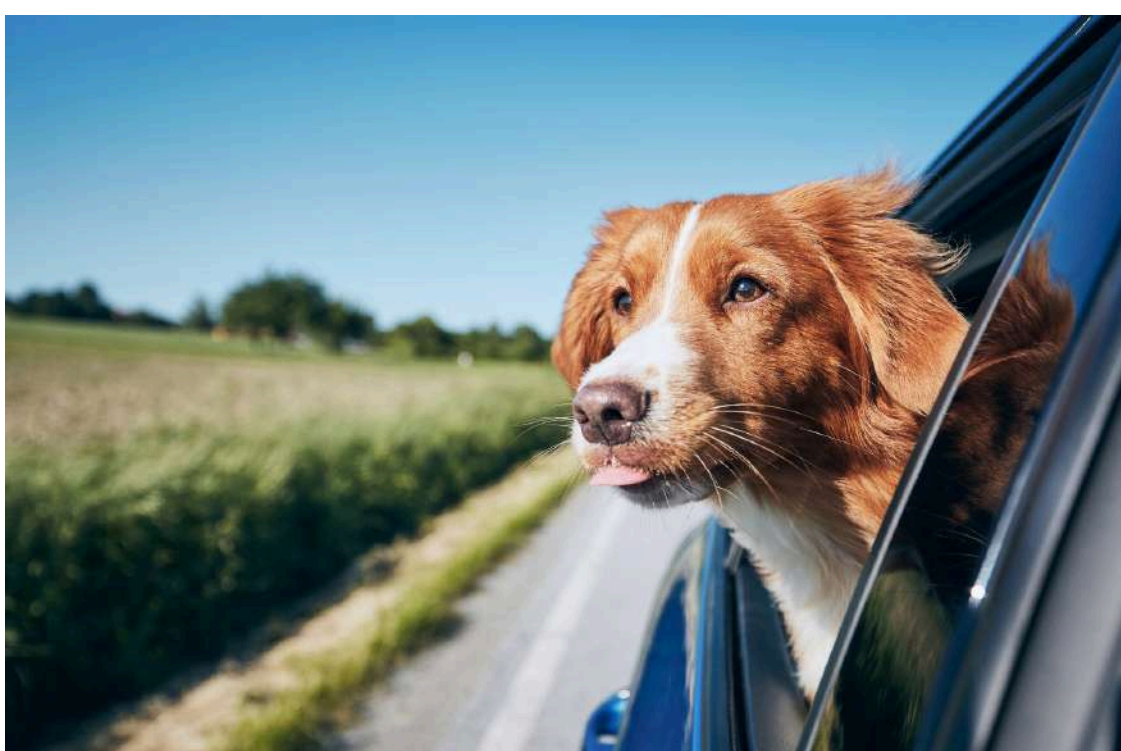
TRAVELING WITH PETS

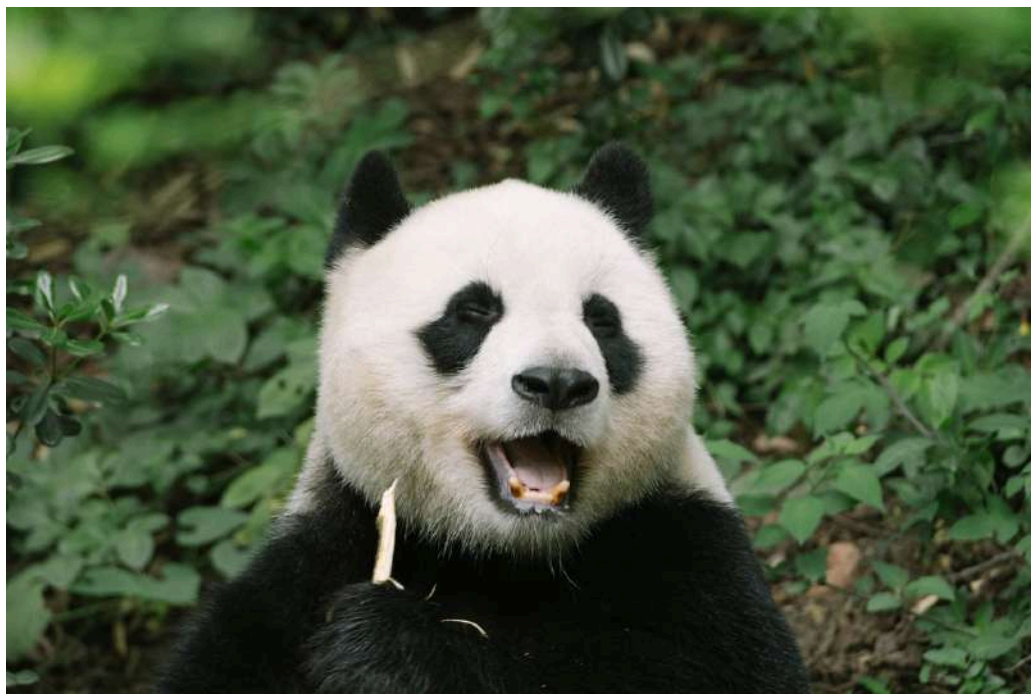


Do you wish to travel but are uncertain about who to entrust your four-legged companion to? Why not bring him or her along for the adventure? After all, he or she is an essential member of your family. We also arrange customized trips for this specific situation.

SERVICES OFFERED

- **TRANSPORT**
- **ACCOMMODATION**
- **PET SITTING SERVICE**
- **TRAVEL INSURANCE FOR ANIMALS**

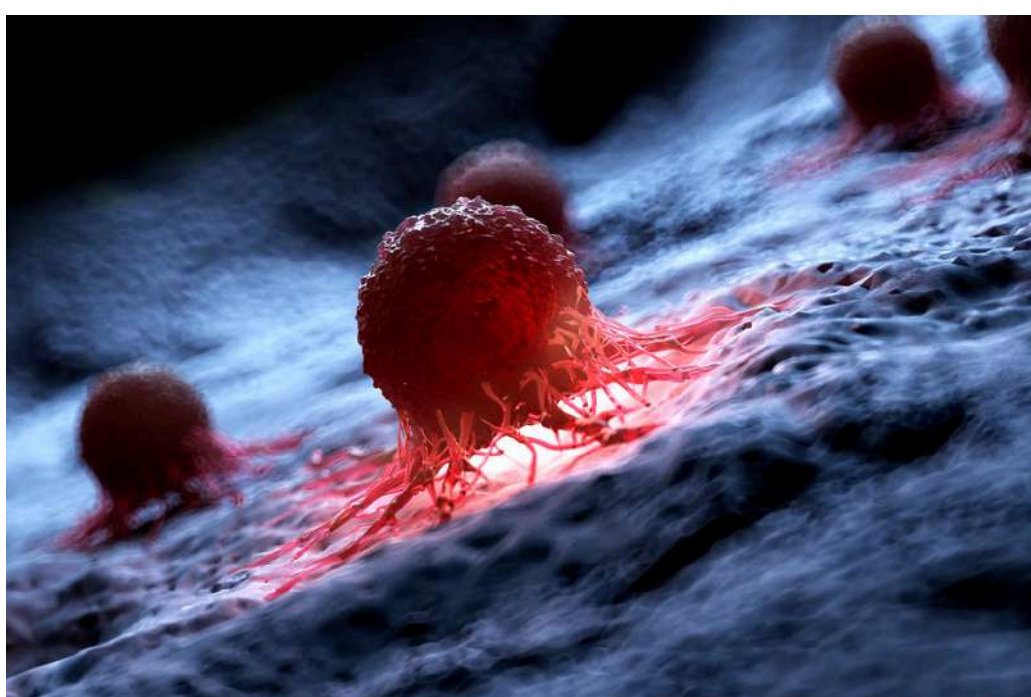




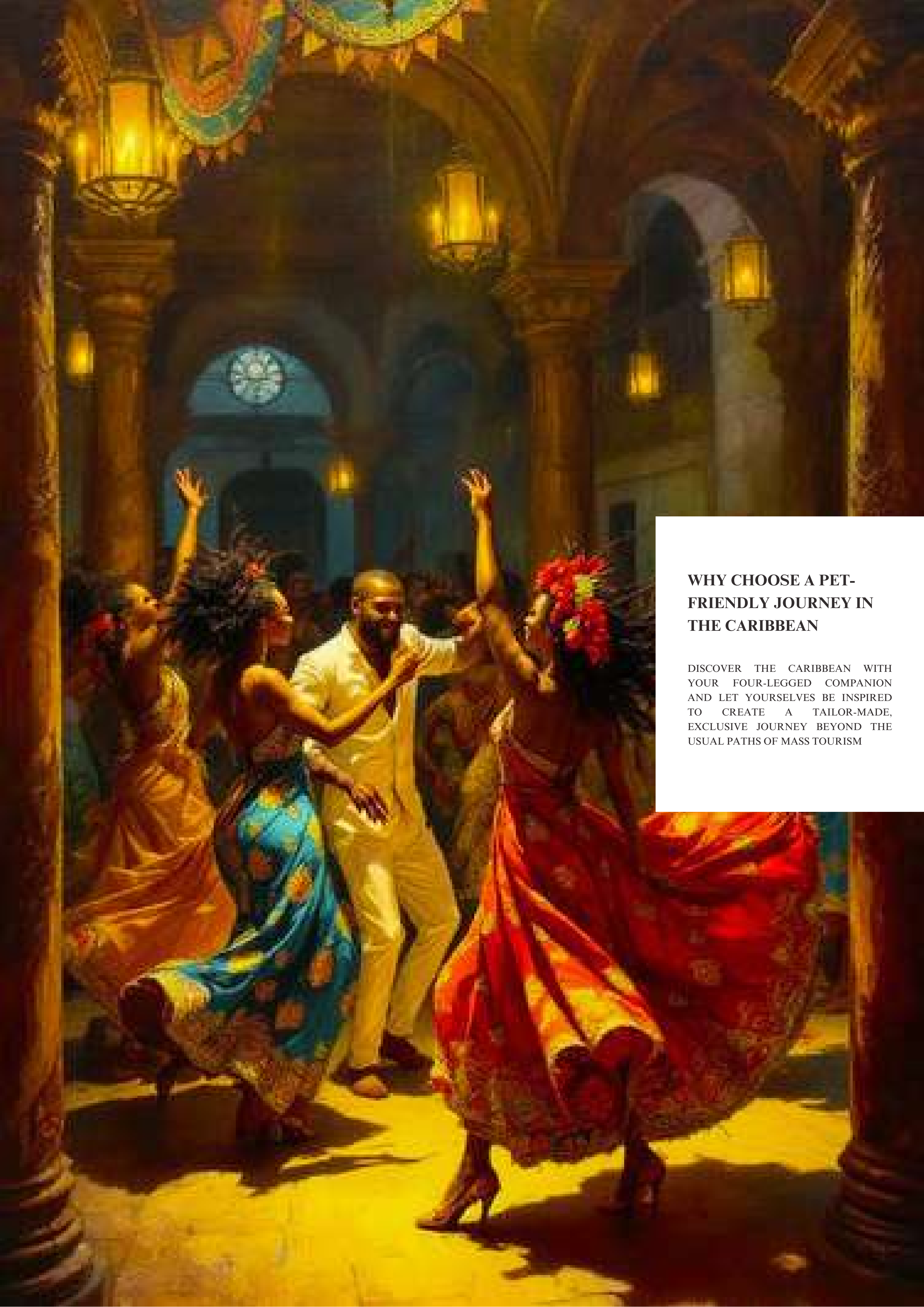
OUR COMMITMENT TO ENVIRONMENTAL PROTECTION AND CANCER RESEARCH



THROUGH OUR TRIPS, WE AIM TO PROVIDE OUR CUSTOMERS WITH THE OPPORTUNITY TO **SUPPORT** NON-PROFIT ORGANIZATIONS DEDICATED TO ADDRESSING THE FOLLOWING GLOBAL CHALLENGES.



- **CONSERVATION OF PLANT AND ANIMAL LIFE**
- **GLOBAL WARMING**
- **CANCER RESEARCH**



WHY CHOOSE A PET-FRIENDLY JOURNEY IN THE CARIBBEAN

DISCOVER THE CARIBBEAN WITH YOUR FOUR-LEGGED COMPANION AND LET YOURSELVES BE INSPIRED TO CREATE A TAILOR-MADE, EXCLUSIVE JOURNEY BEYOND THE USUAL PATHS OF MASS TOURISM

PET-FRIENDLY CARIBBEAN: A JOURNEY THROUGH OPEN NATURE, FREE BEACHES, AND SPACES TO EXPERIENCE TOGETHER



There are journeys that don't separate, but include every adventure companion, transforming movement and exploration into an experience shared even with your pets.

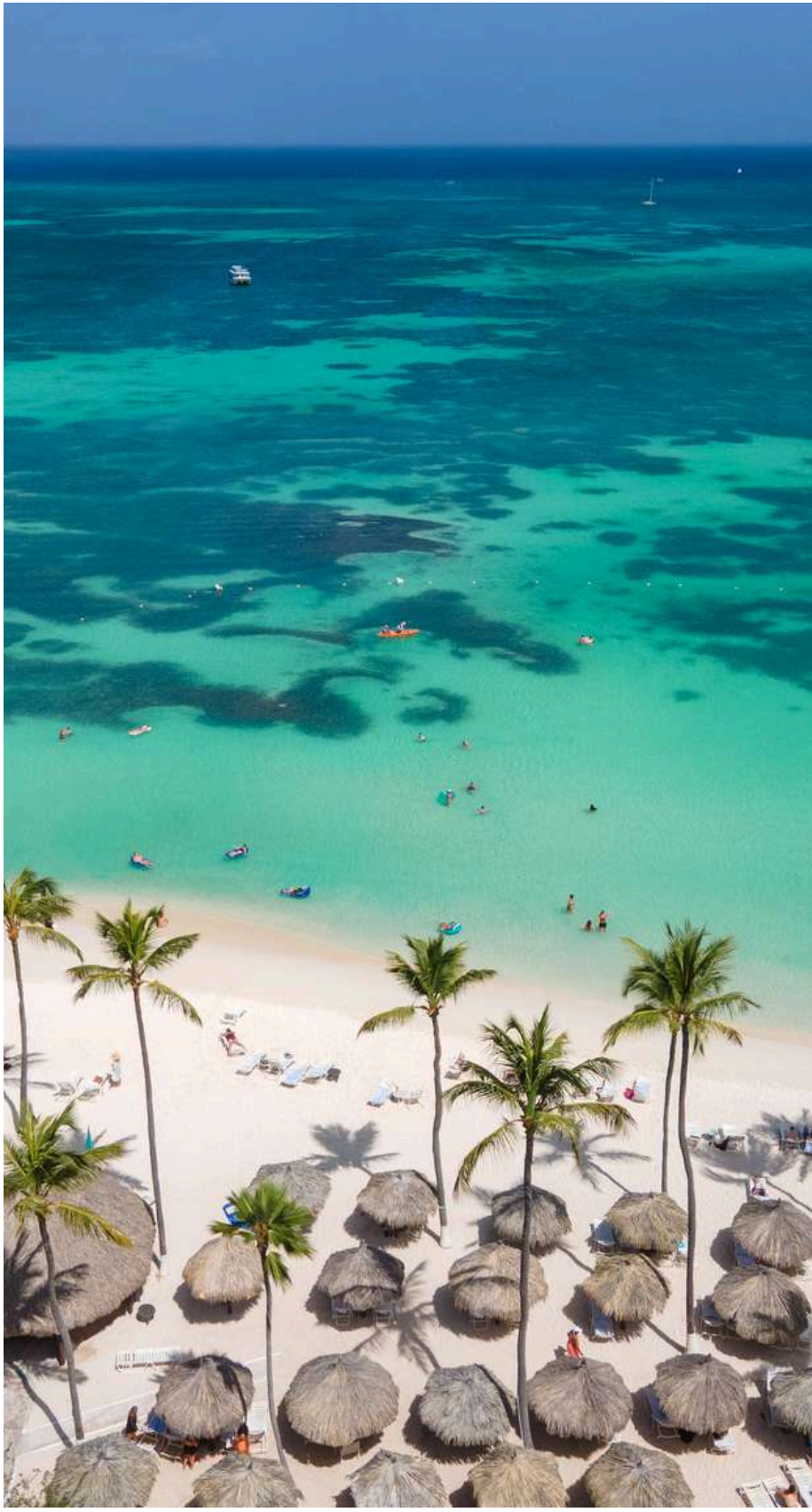
A pet-friendly trip to the Caribbean means choosing destinations where open spaces, abundant nature, and a relaxed pace allow you to experience the outdoors without excessive restrictions. It's a way of traveling that favors uncongested environments, accessible natural settings, and accommodations that accommodate a variety of needs.

Many Caribbean islands offer ideal settings for this type of experience: extensive, sparsely populated coastlines, quieter sandy stretches, rural areas, and nature trails where the landscape takes center stage. In these settings, the journey unfolds seamlessly, between outdoor strolls and moments of relaxation immersed in nature.

The natural dimension is central: coastal parks, simple trails, and sparsely populated inland areas allow for greater freedom of movement, always respecting the local environment. The sea, with its wide beaches and less crowded areas, becomes one of the most suitable elements for a shared and informal experience.

Even small coastal towns and villages contribute to this type of travel, with open spaces, seafronts, and pedestrian areas that allow for alternating moments of discovery with quiet breaks, without the complexity of large urban centers.

A pet-friendly trip to the Caribbean is an experience of simplicity and freedom, where nature is not just a backdrop, but a space to experience together, balancing exploration and serenity.



WHY CHOOSE THE CARIBBEAN FOR A PET-FRIENDLY TRIP

AN ARCHIPELAGO OF OPEN SPACES BETWEEN SEA, NATURE AND FREEDOM OF MOVEMENT

The Caribbean offers a particularly suitable setting for pet-friendly travel thanks to the widespread presence of open natural environments, sparsely populated coastlines, and rural areas where the landscape takes center stage. The larger and less densely populated islands, such as Aruba, Curaçao, Barbados, and Saint Lucia, offer a dynamic travel experience, with wide open spaces and nature trails. Coral islands like the Bahamas and Turks and Caicos feature long sandy beaches, isolated coastlines, and shallow lagoons, while volcanic islands like Dominica and Grenada offer tropical forests, nature trails, and wilder inland areas. This variety allows for a variety of environments, all sharing a strong presence of nature and less urban density than other destinations.

OUTDOOR EXPERIENCES AMONG COASTS, PARKS, AND NATURAL LANDSCAPES

A pet-friendly trip to the Caribbean is best enjoyed through open spaces and uncrowded natural settings. The coasts of Aruba, such as Eagle Beach (Aruba), or the wilder areas of Boca Prins in Arikok National Park (Aruba), offer wide, windy environments ideal for long outdoor walks. In Curaçao, the coastal areas of Westpunt (Curaçao) and the panoramic viewpoints of Shete Boka National Park (Curaçao) allow you to experience the seascape directly and uncrowded. Even the greenest islands offer numerous opportunities: Morne Trois Pitons National Park (Dominica), with tropical forests and trails immersed in vegetation, or the rural areas of Saint Kitts, characterized by scenic roads and hilly landscapes, are ideal settings for a nature experience.

A FLEXIBLE JOURNEY THROUGH ISLANDS, NATURE AND A RELAXED PACE

The Caribbean allows for flexible itineraries, where island hopping and local excursions alternate with relaxing moments in natural settings. Short distances in some areas and the presence of regional connections make it easy to combine multiple destinations within the same trip. Cities like Bridgetown (Barbados), Oranjestad (Aruba), and Fort-de-France (Martinique) offer a balance of amenities, waterfront views, and access to surrounding nature, allowing for a mix of urban and outdoor experiences. Coastal roads and less urbanized areas become an integral part of the journey, offering freedom of movement and direct contact with the landscape. It's an ideal destination for those who want to travel with their pets in a natural and diverse setting, where the pace is flexible and the open spaces allow for a shared, simple, and authentic experience.



TAILOR-MADE TRIPS TO THE CARIBBEAN WITH YOUR PETS

A trip to the Caribbean can be truly special when shared with your four-legged friends. Pet-friendly vacations allow you to explore unique landscapes, authentic villages, and natural attractions with your pets, without sacrificing comfort, safety, and relaxation.

For this reason, it should never be a standard package, but a carefully and attentively designed experience, designed for you and your four-legged travel companions.

Our approach to creating pet-friendly travel is based on a fundamental principle: each itinerary must be unique, accessible, and tailored to the needs of your pets, ensuring safe and enjoyable experiences for everyone.

We listen to your desires, understand your pace and travel style, and create an itinerary that makes every stage of your shared adventure special.

Every detail is carefully studied:

- Choice of destinations, from nature parks with pet-friendly trails, to quiet beaches and scenic islands, to pet-friendly villages and hamlets**
- Pace of the itinerary, to enjoy every experience without rushing and without stress, leaving space for the needs of your animals**
- Experiences along the way, such as scenic walks, visits to pet-friendly museums and attractions, nature excursions and moments of relaxation together**
- A selection of the most welcoming facilities, with dedicated services for pets and comfortable spaces for a peaceful stay**

The result is an authentic, safe, and deeply personal journey, designed to offer unforgettable moments with your pets, discovering places far from mass tourism and creating precious memories shared with those you love.

PET-FRIENDLY EXPERIENCES IN THE CARIBBEAN: TRAVELING TOGETHER THROUGH NATURE AND FREEDOM

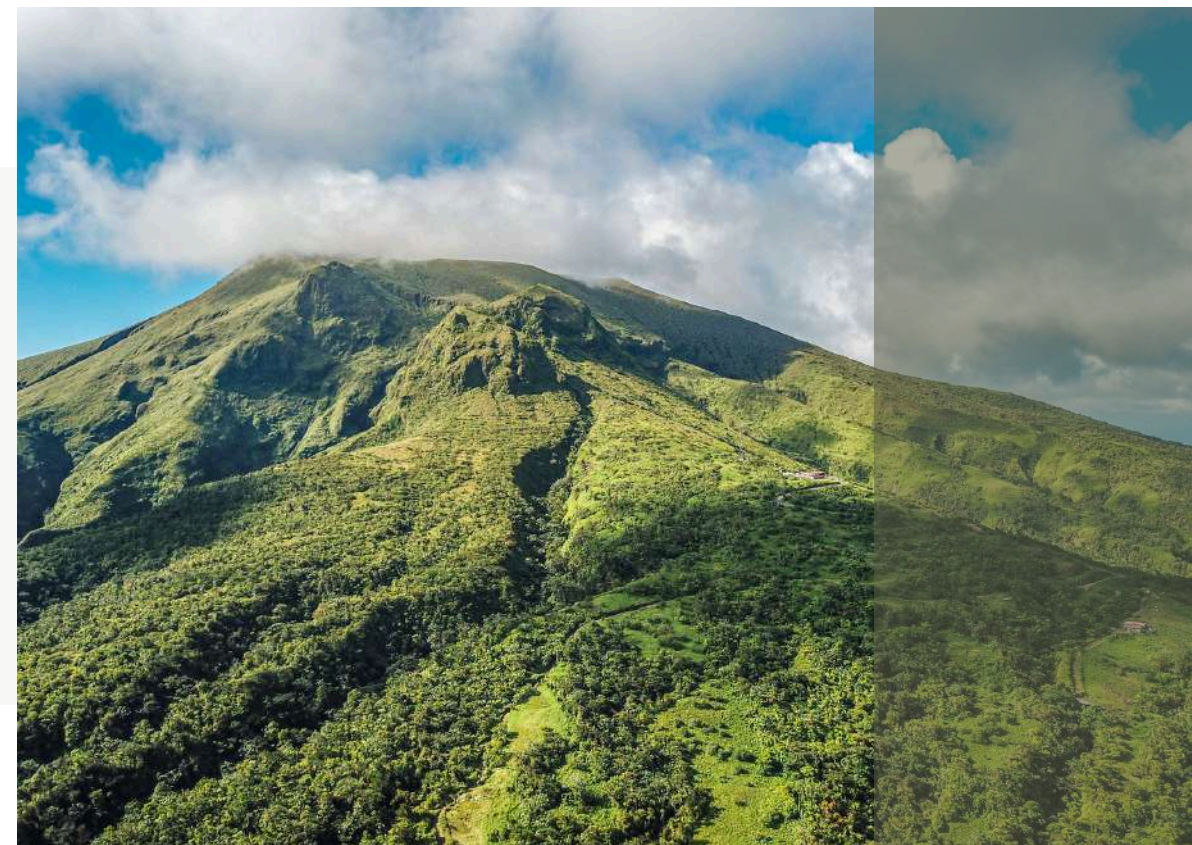
A SHARED JOURNEY THROUGH OPEN SPACES AND UNCONGESTED ENVIRONMENTS

In the Caribbean, a pet-friendly experience is distinguished by the widespread presence of open, sparsely populated environments, where nature is not compressible but dominant. The journey unfolds in contexts where it's possible to move with greater freedom, thanks to territories that alternate between extensive coastlines, rural areas, and sparsely populated natural zones, encouraging a more spontaneous and flexible travel experience.



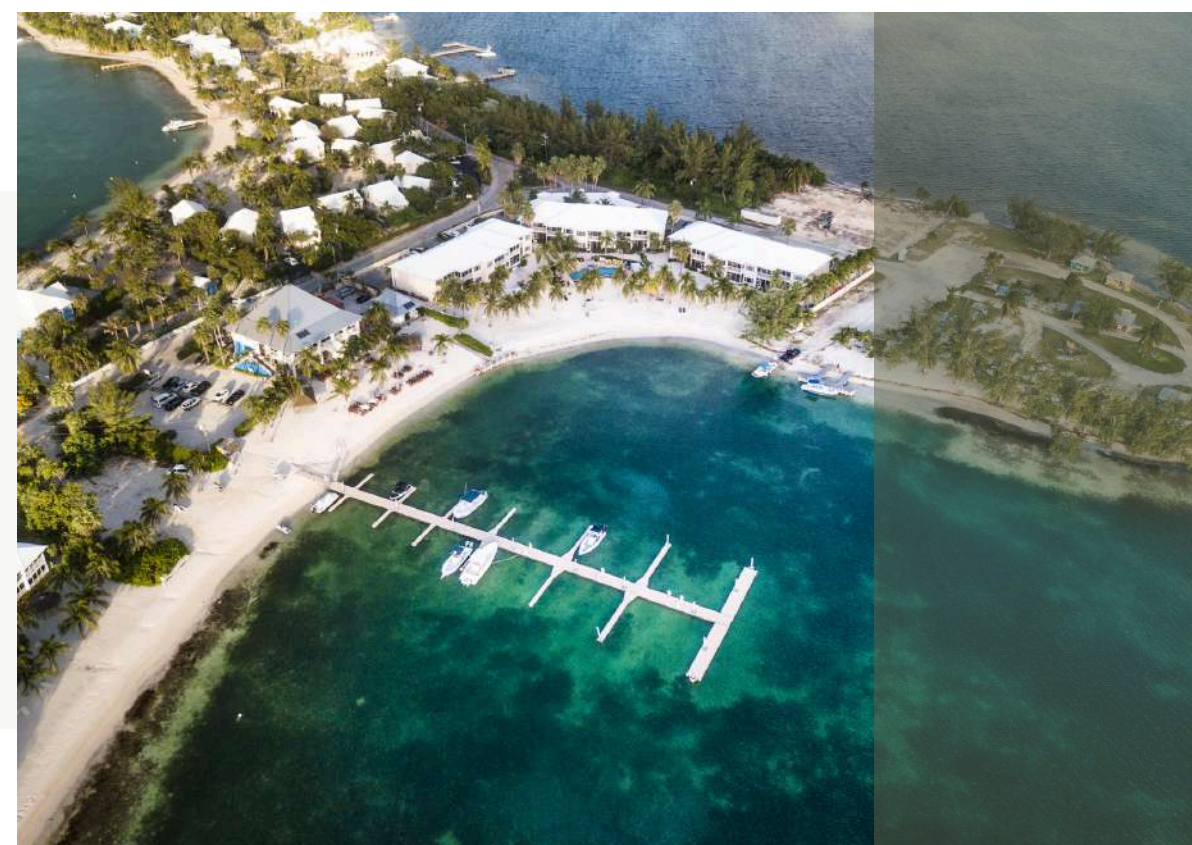
DIRECT CONTACT WITH NATURAL LANDSCAPES AND OPEN-AIR RHYTHMS

One of the most distinctive aspects is the centrality of outdoor life, which in the Caribbean takes different forms depending on the island. The long, windy coastlines, uncomplicated nature trails, and less urbanized coastal areas allow for a continuous and informal experience of the landscape. The journey is thus built around simple moments, linked to observing the environment and sharing natural space.



A BALANCE BETWEEN FREEDOM OF MOVEMENT AND SIMPLICITY OF CONTEXT

The Caribbean's island structure favors a flexible, pet-friendly experience, allowing you to alternate between different types of environments without major logistical complexities. The short distances in some areas, the presence of rural settings, and the variety of landscapes allow for adaptable itineraries, where the pace is determined more by the environment than by rigid planning. This makes the journey natural, seamless, and harmonious, even in its day-to-day management.



WHEN TO GO ON A PET-FRIENDLY TRIP TO THE CARIBBEAN



The Caribbean can be visited year-round, but its charm changes significantly depending on the different climate periods, offering ever-changing experiences amidst light, sea, and tropical nature.

Dry Season - Between December and April, the climate is generally most stable, with sunny days, low humidity, and ideal conditions for beach and hiking. This is the time when the islands are at their brightest and most accessible, perfect for multi-destination itineraries, outdoor activities, and relaxing getaways.

Mid-season - During the months of May, June, and November, the weather generally remains favorable, but with less tourist activity. This is a balanced period, when the islands are quieter and nature appears particularly lush. The conditions still allow you to fully enjoy the sea and outdoor activities, at a more relaxed pace.

Wet Season - Between July and October, the most unstable climate occurs, with a greater likelihood of heavy rains and tropical storms. However, it is also the period when the landscapes become greener and the tourist presence decreases significantly. This makes the trip more contemplative and flexible, suitable for those who prefer tranquility and less crowded nature.

10 PET-FRIENDLY TRAVEL EXPERIENCES THAT ONLY EXIST IN THE CARIBBEAN

Some experiences in the Caribbean are so closely tied to the islands' geography and cultural identity that they become truly unique moments, capable of turning a journey into an experience built on emotions, light, and ever-changing nature.

Among the most suggestive:

- Crossing the islands amidst tropical landscapes and constant contrasts - In the Caribbean, a journey can transform into a succession of vastly different scenarios: from the scenic roads of Saint Lucia, with views of the Pitons, to the rural routes of Barbados, to the inland itineraries of Puerto Rico amidst forests and mountains. Every journey becomes part of the experience, with rapid and continuous changes in landscape between coast, inland, and tropical vegetation.
- Stay in settings immersed in the sea and tropical nature - Many islands offer accommodations nestled in natural settings that become an integral part of the stay. In Saint Kitts, hilly areas slope down to the sea, while in Anguilla the landscape opens onto long, quiet beaches like Shoal Bay East. In Curaçao, the contrast between colorful architecture and rocky coastline creates a unique balance between nature and island life.
- Experience the contrast between coral beaches and volcanic coasts - The Caribbean is a geological mosaic: the white beaches and lagoons of Turks and Caicos (Grace Bay) coexist with the rugged, rugged coasts of Dominica, rich in tropical vegetation and black cliffs. In Aruba, sandy beaches meet wind-sculpted rock formations, while in Grenada, volcanic coasts alternate with tranquil bays and sheltered coves.
- Traveling through port cities between colonial history and the sea - Caribbean cities tell the story of the archipelago through their architecture and historic ports. In Havana, Cuba, the Malecón accompanies the sea throughout the city, while in San Juan, Puerto Rico, the Old San Juan neighborhood preserves fortifications like El Morro and colorful streets overlooking the ocean. In Willemstad, Curaçao, Dutch colonial houses overlook the harbor.
- Experience local culture through music, markets, and daily life - Caribbean culture manifests itself spontaneously in everyday life: in the markets of Castries (Saint Lucia), the musical evenings of San Juan (Puerto Rico), and the local festivals of Fort-de-France (Martinique). Music, dance, and cuisine become an integral part of the experience, unmediated, directly in public spaces and historic neighborhoods.
- Exploring volcanic landscapes and tropical forests - Some islands offer environments dominated by the most intense nature. In Dominica, Morne Trois Pitons National Park alternates dense forests and hot springs, while in Saint Lucia, the volcanic reliefs of the Pitons dominate the landscape. On Montserrat, areas shaped by volcanic activity tell the story of a powerful and ever-changing nature.
- Sailing between islands with diverse cultural identities - The sea connects vastly different realities: from the Bahamas to the Cayman Islands, all the way to the Grenadines, each journey introduces a new cultural and landscape identity. The journey between archipelagos becomes a dynamic experience, where each island adds a different chapter to the story.
- Discover nature reserves and tropical biodiversity - Many islands preserve highly valuable protected ecosystems. In Puerto Rico, El Yunque National Forest is one of the most important tropical forests in the region, while in Saint Vincent, the interior areas are characterized by lush vegetation and nature trails. In Guadeloupe, the volcanic national park combines biodiversity and mountain landscapes.
- Stroll along secluded beaches and pristine coastlines - Some coastal areas in the Caribbean offer wide, undeveloped spaces where the sea dominates the landscape. The long beaches of Seven Mile Beach (Grand Cayman), the quieter areas of Antigua, or the windy coasts of Aruba allow you to experience the sea directly, with open horizons and natural rhythms.
- Admiring ocean sunsets in open natural settings - Sunsets in the Caribbean are a recurring yet ever-changing experience: from the cliffs of Soufrière (Saint Lucia) to the panoramic viewpoints of Curaçao, all the way to the western coast of Aruba, the tropical light transforms the landscape into a moment of strong visual and contemplative intensity, always linked to the marine horizon.





THE MOST CHARMING ACCOMMODATIONS FOR A PET-FRIENDLY TRIP

A trip to the Caribbean is defined not only by the islands you visit, but also by the places you choose to stay, where time slows down and the landscape becomes an integral part of your daily experience.

The Caribbean offers a wide variety of accommodations that reflect the archipelago's natural beauty: environments suspended between sea and tropical vegetation, properties nestled in coastal settings or nestled in hilly landscapes, where the connection with the outdoors is always direct and continuous. Resorts integrated into nature, small hotels overlooking tranquil bays, colonial homes reinterpreted in a contemporary style, and structures nestled in historic centers offer diverse experiences yet united by a strong connection to the territory. On many islands, the architecture constantly engages with the surrounding environment, using local materials, open spaces, and solutions that enhance light, wind, and sea views. Alongside these solutions, some accommodations stand out for their particularly immersive locations: oceanfront properties with direct beach access, units nestled in tropical gardens, or units overlooking sheltered bays that allow immediate contact with the Caribbean landscape.

In this context, the stay becomes an essential part of the journey itself: not just a place to rest, but an experience that helps define the pace and atmosphere of the entire itinerary, regardless of the type of trip or the niche it focuses on.



MISTAKES TO AVOID WHEN PLANNING A PET-FRIENDLY TRIP TO THE CARIBBEAN

WANTING TO VISIT TOO MANY ISLANDS OR DESTINATIONS IN A SHORT TIME

One of the most common mistakes is trying to include too many islands in the same itinerary. The Caribbean offers a wide variety of landscapes and cultures, but turning the trip into a race between airports and ferry connections reduces the chance to truly experience each destination. Focusing on a few islands allows you to appreciate their differences in greater depth, between the sea, nature, and local identity.

UNDERESTIMATING CONNECTIONS AND TRAVEL TIMES BETWEEN ISLANDS

Even when distances seem short, travel in the Caribbean can take longer than expected, especially between different archipelagos or less-connected areas. Connections depend on regional flights, indirect routes, or weather conditions. Poor planning can make your days feel fragmented, while careful travel management allows you to enjoy your trip seamlessly and peacefully.

DON'T LEAVE ROOM FOR SPONTANEOUS DISCOVERY OF THE TERRITORY

An essential part of the Caribbean experience comes from unexpected encounters: a secluded bay, a coastal village, a scenic drive, or a local festival. A rigid itinerary risks limiting these experiences, which often become the most authentic moments of the trip. Flexibility is essential to capturing the islands' true identity.

LIMIT YOURSELF EXCLUSIVELY TO THE MOST TOURISTIC OR URBAN AREAS

The main cities offer important services and attractions, but the Caribbean expresses its most authentic identity especially outside the urban centers. Less frequented coasts, rural areas, smaller islands, and small settlements reveal a truer and more diverse side of the archipelago, which deserves to be included in the travel experience.

UNDERESTIMATING THE ROLE OF ACCOMMODATIONS IN THE OVERALL EXPERIENCE

In the Caribbean, accommodation isn't just a base, but an integral part of the trip. Choosing accommodations immersed in nature, overlooking the sea, or nestled in local settings can profoundly influence the quality of the experience. A careless selection risks reducing your connection with the environment and the island's distinctive atmosphere.

NOT BUILDING AN ITINERARY CONSISTENT WITH YOUR TRAVEL STYLE

Every trip to the Caribbean should be tailored to your own pace and interests, as the islands offer vastly different experiences: relaxation, nature, culture, or exploration. A standardized itinerary risks overlooking these differences. Personalizing your trip, however, allows for a more balanced, authentic, and truly meaningful experience.



QUALITY AND SERVICE UPDATES

The experiences and services presented in this brochure have been selected based on qualitative criteria focused on comfort, accessibility, and the personalization of the travel experience.

As operational conditions, dedicated services, and policies may be subject to updates or changes over time, each proposal will be reviewed and confirmed at the quotation stage, in order to ensure full alignment with the traveler's specific requirements and the expected quality standards.



GREATER ANTILLES - HISTORY, CULTURE, AND TIMELESS CARIBBEAN LANDSCAPES



The Greater Antilles represent the historical and geographical heart of the Caribbean, a collection of large islands where dynamic cities like Havana (Cuba), San Juan (Puerto Rico) and George Town (Cayman Islands) alternate with smaller colonial centers such as Trinidad (Cuba), Santiago de Cuba (Cuba), Ponce (Puerto Rico) and Camagüey (Cuba), and coastal communities such as Baracoa (Cuba), Bayamo (Cuba), Holguín (Cuba), Fajardo (Puerto Rico) and Manzanillo (Cuba), immersed in a variety of tropical landscapes. The territory is characterized by a strong environmental diversity, where internal mountain ranges such as the Sierra Maestra (Cuba) and the Cordillera Central (Puerto Rico) meet, fertile plains such as the Camagüey plain (Cuba) and the Cibao Valley (Dominican Republic), cultivated valleys such as the Viñales Valley (Cuba) and the Yumuri Valley (Cuba), and indented coastlines such as the northern coast of Cuba and the eastern coast of Puerto Rico, which alternate sandy beaches such as Varadero (Cuba) and Flamenco Beach (Puerto Rico) with sheltered bays such as the Bahía de La Habana (Cuba) and the Bahía de Ponce (Puerto Rico), and rocky stretches overlooking the ocean such as Cabo Rojo (Puerto Rico) and Baracoa (Cuba).

Before the arrival of Europeans, these islands were inhabited by Taíno and Arawak peoples, who developed social and cultural systems based on agricultural and fishing communities, organized villages, and a network of maritime trade between the islands. These systems were subsequently profoundly transformed by Spanish colonization and, in some areas such as Puerto Rico and the Cayman Islands, also by British and American influence, which helped shape the region's current urban, linguistic, and cultural structure. The colonial era left a clear mark on historic centers such as Old Havana (Cuba), San Juan Viejo (Puerto Rico) and Camagüey (Cuba), on coastal fortifications such as Castillo del Morro (Puerto Rico), Castillo San Cristóbal (Puerto Rico) and Castillo de la Real Fuerza (Cuba), and on strategic ports such as the Port of Havana (Cuba), the Port of San Juan (Puerto Rico) and the Port of Santiago de Cuba (Cuba), witnesses to a past linked to trade routes between Europe and the Americas.

From a naturalistic perspective, the Greater Antilles offer an extremely diverse landscape mosaic, where tropical forests such as the Sierra del Rosario (Cuba) and El Yunque National Forest (Puerto Rico), green mountains such as the Sierra Maestra (Cuba) and the Cordillera Central (Puerto Rico), inland rivers such as the Río Cauto (Cuba) and the Río Grande de Loíza (Puerto Rico), and long coastlines such as those in northern Cuba and southern Puerto Rico alternate. Rural areas such as Pinar del Río (Cuba) and inland Puerto Rico coexist with more developed coastal zones such as Varadero (Cuba), the San Juan Metropolitan Area (Puerto Rico), and Grand Cayman (Cayman Islands), creating a balance between nature and human presence. The coral reefs and transparent waters surrounding the Cayman Islands and the coasts of Puerto Rico further contribute to the area's environmental richness.

The main areas that make up the macro region are:

- CUBA - THE LARGEST CARIBBEAN ISLAND WITH A STRONG HISTORICAL, CULTURAL AND NATURAL IDENTITY
- PUERTO RICO – CHARACTERIZED BY A BALANCE BETWEEN COLONIAL HERITAGE AND URBAN MODERNITY
- CAYMAN ISLANDS – A COMPACT TERRITORY WITH STRONG TIES TO THE MARINE ENVIRONMENT

The main international gateways are:

- José Martí Airport in Havana (Cuba), the main national hub and entry point for the island
- Luis Muñoz Marín Airport in San Juan, Puerto Rico, the main hub of the Eastern Caribbean.
- Owen Roberts International Airport in George Town (Cayman Islands), the main gateway to the islands and a regional hub

The Greater Antilles thus constitute a complex and stratified island system, where history, nature, and culture intertwine in a continuous balance that defines one of the richest and most recognizable identities of the entire Caribbean region.

GREATER ANTILLES – PET-FRIENDLY TRAVEL THROUGH OPEN NATURE, COASTS, AND AUTHENTIC SPACES

PLACES AND EXPERIENCES FOR A TRIP WITH YOUR FOUR-LEGGED FRIENDS OFF THE BEATEN PATH

The Greater Antilles lend themselves to shared travel with pets thanks to their vast natural spaces, accessible coastlines, and rural areas where direct contact with the environment is possible and sparsely populated. Between Cuba, Puerto Rico, and the Cayman Islands, the experience unfolds through real-world locations, characterized by open-air trails, expansive natural settings, and coastal areas where the journey is slow and immersive.

- In Cuba, pet-friendly travel focuses primarily on natural areas and less urbanized rural routes. The Valle de los Ingenios region, near Trinidad, offers wide open spaces among hills and ancient plantations, ideal for nature-filled hikes. The southwest coast of the Guanahacabibes Peninsula, a protected and wild area, represents one of the most pristine environments on the island, with coastal trails and coastal forests. The rural areas of Pinar del Río, with their fields and plantations, also offer a natural, expansive setting where the pace of travel is more relaxed and in touch with nature.
- In Puerto Rico, the experience unfolds between natural parks and less urbanized coastlines. The Piñones State Forest offers coastal trails through mangroves and natural boardwalks, in an open and accessible environment. The Boquerón area (Cabo Rojo) is characterized by wide beaches and coastal natural areas where the atmosphere is more relaxed and informal. The Guánica State Forest, recognized for its tropical dry forest, also offers a unique natural environment, with trails immersed in vegetation and open spaces.
- In the Cayman Islands, pet-friendly travel focuses on natural areas and less densely developed coastlines. The Rum Point area (Grand Cayman) offers quiet beaches and shallow waters in a relaxed setting. The Cayman Kai area (Grand Cayman) is characterized by low-rise buildings and a dispersed residential area, with direct access to the sea and open spaces. On Little Cayman, the natural dimension is even more pronounced, with undeveloped coastlines and a quiet environment ideal for slow, shared experiences.

Taken together, the Greater Antilles offer an authentic and natural pet-friendly experience, centered on open spaces, coastal areas, and rural territories where the coexistence of travel and pets is fostered by a sparsely urbanized environment. From the countryside and western coasts of Cuba to the nature reserves of Puerto Rico, to the tranquil areas of the Cayman Islands, travel is structured as a free, immersive experience deeply connected to nature.





DID YOU KNOW?

Did you know that the Greater Antilles represent the largest and most geographically complex nucleus of the entire Caribbean system?

Geographically, these islands are distinguished by the presence of large mountain ranges such as the Sierra Maestra in Cuba and the Cordillera Central in Puerto Rico, alternating with vast coastal plains, deep bays and coral reef systems that create some of the richest marine ecosystems in the Caribbean.

From a historical point of view, they were among the first areas of the American continent to come into contact with European expansion after the Taíno and Arawak civilizations, developing over the centuries a unique cultural stratification, influenced by Spanish, British and, in some areas, American domination, which shaped the language, architecture and local identity.

From a travel perspective, the Greater Antilles are characterized by significant internal distances and stark landscape contrasts: you quickly move from lively capitals and historic ports to mountains, tropical forests and wild coasts, making every journey an integral part of the experience.

An archipelago where geographical grandeur, historical complexity, and natural variety merge into a single, central, and distinctive Caribbean system.



LUCAYAN ARCHIPELAGO – CORAL ISLANDS, MARITIME HISTORY, AND TIMELESS LANDSCAPES



The Lucayan Archipelago represents the northern gateway to the Caribbean, a cluster of coral islands where lively urban centers such as Nassau (Bahamas), Freeport (Bahamas) and Cockburn Town (Turks and Caicos) alternate with small historic settlements and coastal communities such as Dunmore Town on Harbour Island (Bahamas), George Town on Great Exuma (Bahamas) and Salt Cay (Turks and Caicos), immersed in seascapes of extraordinary beauty. The territory is characterized by a predominantly flat morphology, typical of limestone and coral islands, with natural environments that include extensive inland lagoons such as those of the Exuma Cays (Bahamas), mangrove systems such as those of the Lucayan National Park on Grand Bahama (Bahamas), and rugged coastlines such as those of Providenciales (Turks and Caicos), which alternate white sand beaches such as Grace Bay (Turks and Caicos) and Pink Sands Beach on Harbour Island (Bahamas), sheltered bays such as Elizabeth Harbour on Great Exuma (Bahamas) and rocky stretches overlooking the ocean such as those of North Eleuthera (Bahamas).

Before the arrival of Europeans, these islands were inhabited by the Lucayan people, belonging to the Taíno ethnic group, who developed stable communities based on fishing, agriculture, and a dense network of inter-island trade. Evidence of this presence is visible today in archaeological sites such as those in Lucayan National Park (Bahamas). With the arrival of Christopher Columbus in San Salvador (Bahamas) in 1492, the archipelago entered the European orbit, undergoing profound demographic and cultural transformations. Subsequently, British influence shaped the institutional, linguistic, and architectural structure of the Bahamas and the Turks and Caicos, leaving a visible legacy in the historic centers, colonial buildings, and strategic ports. Significant examples include Old Town Nassau, Bahamas, fortifications such as Fort Charlotte and Fort Fincastle in Nassau, Bahamas, and the historic ports of Nassau, Bahamas and Cockburn Town on Grand Turk, Bahamas, which testify to the archipelago's role in Atlantic trade routes and the history of navigation.

From a naturalistic perspective, the Lucayan Archipelago offers a unique marine landscape, where some of the most extensive coral reefs in the Western Hemisphere, such as those surrounding Andros Island (Bahamas) and Providenciales (Turks & Caicos), combine with crystalline waters, submerged caves, and "blue holes" like Dean's Blue Hole on Long Island (Bahamas). Rural and less urbanized areas, such as Cat Island (Bahamas) and South Caicos (Turks & Caicos), coexist with more developed coastal areas such as Nassau on New Providence (Bahamas) and Grace Bay on Providenciales (Turks & Caicos), creating a balance between pristine nature and human presence. The vast expanses of sand and inland lagoons contribute to the area's extraordinary biodiversity, making it one of the most significant marine ecosystems in the Caribbean.

Geographically, the Lucayan Archipelago extends between the Atlantic Ocean and the Caribbean Sea, southeast of Florida, and is made up of hundreds of islands and islets that form a compact and easily accessible island system.

The main areas that make up the macro region are:

- **BAHAMAS - A VAST ARCHIPELAGO MADE UP OF OVER 700 ISLANDS AND ISLETS, CHARACTERISED BY A STRONG MARITIME TRADITION AND A NOTABLE VARIETY OF LANDSCAPES**
- **TURKS AND CAICOS (BRITISH OVERSEAS TERRITORY) – A GROUP OF CORAL ISLANDS KNOWN FOR THE INTEGRITY OF THEIR MARINE ECOSYSTEMS AND THE PRESENCE OF HISTORIC COASTAL COMMUNITIES**

The main international gateways are:

- Lynden Pindling International Airport in Nassau (Bahamas), the archipelago's main hub and strategic access point to the central and northern islands
- Grand Bahama International Airport in Freeport, Bahamas, is an important alternative access point to the northern part of the archipelago.
- Providenciales International Airport (Turks and Caicos), a key gateway to the entire territory and a hub for regional connections

The Lucayan Archipelago thus presents itself as a harmonious and fascinating island system, where history, culture, and natural environments intertwine in a unique balance, offering an authentic experience representative of Caribbean identity, far from the frenetic pace of life and profoundly connected to the sea.

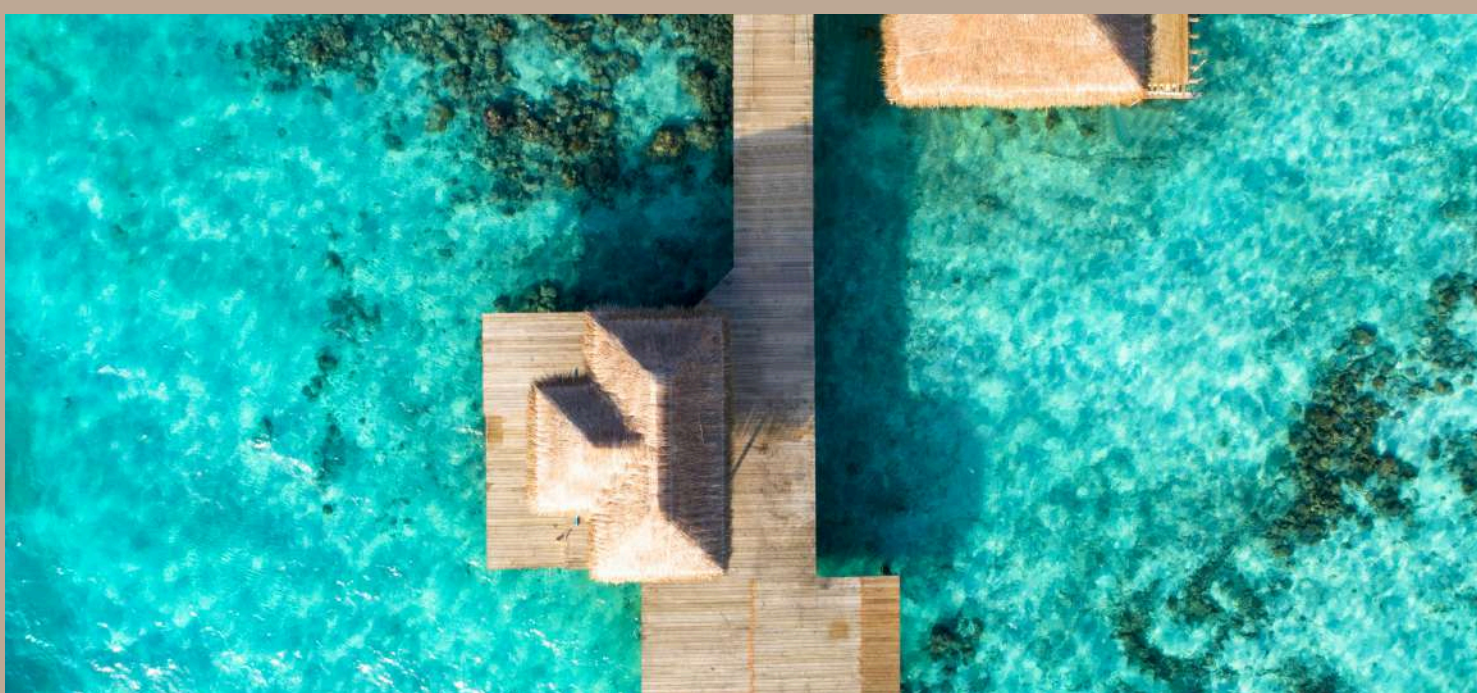
LUCAYAN ARCHIPELAGO – PET-FRIENDLY TRAVEL AMONG OPEN BEACHES, COASTAL NATURE, AND PEACEFUL ISLANDS

PLACES AND EXPERIENCES FOR A TRIP WITH YOUR FOUR-LEGGED FRIENDS OFF THE BEATEN PATH

The Lucayan Archipelago lends itself to a pet-friendly travel experience thanks to its vast natural spaces, extensive beaches, and sparsely populated coastal areas, where contact with the environment is direct and continuous. The Bahamas and Turks and Caicos offer a mosaic of islands with sandy shores, nature trails, and small towns, ideal for slow-paced, shared tourism in the open air.

- In the Bahamas, the journey takes place in natural and coastal settings that are less urbanized than the main cities. Long Island offers wide, uncrowded beaches, such as Cape Santa Maria, characterized by long sandy stretches and calm seas. The Exuma region, particularly the less developed areas of Great Exuma, features scenic coastal roads and natural bays like Hooper's Bay, where the atmosphere is open and relaxed. The island of Eleuthera, with towns like Governor's Harbour, also offers natural beaches and coastal trails alternating with small villages nestled in lush vegetation.
- In Turks and Caicos, the pet-friendly experience focuses on quiet islands and sparsely populated coastal areas. North Caicos Island offers a rural and natural setting, with areas like Whitby Beach and secondary roads surrounded by tropical vegetation. Middle Caicos Island, on the other hand, offers wilder environments, with areas like Mudjin Harbor Cliffs, where cliffs and beaches meet in an open and natural landscape. Providenciales, in less urbanized areas like Long Bay Beach, also offers wide coastal spaces ideal for walking and enjoying the outdoors.

Taken together, the Bahamas and Turks and Caicos offer an authentic and natural pet-friendly experience, centered on expansive beaches, uncrowded islands, and open coastal landscapes. The journey unfolds through open spaces and tranquil environments, where sharing with pets becomes an integral part of the experience, in a setting dominated by the sea and pristine nature.





DID YOU KNOW?

Did you know that the Lucayan Archipelago is the only part of the Caribbean entirely composed of low-lying coral islands, shaped over time by the action of the ocean and Atlantic currents?

Geographically, the Bahamas and Turks and Caicos Islands are located on low-lying limestone platforms, characterized by shallow turquoise waters, sandy banks, and some of the most extensive coral reefs in the Western Hemisphere, making the seascape a dominant feature compared to the land.

From a historical point of view, these islands were among the first lands in the New World to be reached by European populations, after being inhabited by the Lucayans (a Taíno population), who then almost completely disappeared in the decades following the arrival of the Spanish, making way for subsequent British colonizations that defined the current political and cultural structure.

From a travel perspective, the Lucayan Archipelago stands out for its experience strongly tied to the sea: travel between islands, long sandy stretches, and shallow lagoons make the territory more horizontal and dispersed than other Caribbean areas, with a slow pace dominated by the water.

An archipelago where light, ocean, and sand define a unique, essential, and profoundly marine Caribbean identity.



LESSER ANTILLES – LEEWARD ISLANDS (NORTHERN) – BETWEEN COLONIAL CULTURES, VOLCANIC ISLANDS, AND TIMELESS SEASCAPES



The Lesser Antilles – Northern Leeward Islands represent one of the most diverse and fascinating areas of the Caribbean, an archipelago where urban centers such as St. John's (Antigua and Barbuda), Basseterre (Saint Kitts and Nevis), Gustavia (Saint Barthélemy – France), Philipsburg (Sint Maarten – Netherlands), Road Town (British Virgin Islands – United Kingdom), Charlotte Amalie (US Virgin Islands – United States) and Basse-Terre (Guadeloupe – France) alternate with small historic settlements and coastal communities such as English Harbour (Antigua and Barbuda), Charlestown (Nevis – Saint Kitts and Nevis), Grand Case (Saint Martin – France), The Valley (Anguilla – British Overseas Territory) and Little Bay (Montserrat – British Overseas Territory), immersed in tropical landscapes of extraordinary variety. The territory is characterized by a combination of volcanic and coral islands, with mountainous reliefs such as Mount Liamuiga (Saint Kitts and Nevis), the Soufrière Hills (Montserrat), and La Grande Soufrière (Guadeloupe – France), fertile coastal plains such as those of Antigua (Antigua and Barbuda), and cultivated valleys such as Belle Plaine (Guadeloupe – France). The rugged coastline alternates sandy beaches such as Dickenson Bay (Antigua and Barbuda), Shoal Bay (Anguilla), and Orient Bay (Saint Martin – France), sheltered bays such as English Harbour (Antigua and Barbuda) and Marigot Bay (Saint Martin – France), and rocky stretches overlooking the ocean such as those of the Pointe des Châteaux peninsula (Guadeloupe – France) and the Nevis Cliffs (Saint Kitts and Nevis).

Before the arrival of Europeans, these islands were inhabited by Arawak and later Carib peoples, who developed societies based on navigation, agriculture, and a complex network of inter-island trade. Evidence of their presence is visible in archaeological sites such as Fountain Cavern (Anguilla – British Overseas Territory), an important ceremonial complex with pre-Columbian rock carvings, Bloody Point (Saint Kitts – Saint Kitts and Nevis), an area of Amerindian settlements and subsequent historical events, and Trants (Montserrat – British Overseas Territory), one of the island's main pre-Columbian archaeological sites, as well as in cultural traditions still recognizable today. From the 17th century, the Leeward Islands became an object of dispute between European colonial powers, particularly the United Kingdom, France, and the Netherlands, whose influence is still evident in the islands' architecture, official languages, and legal systems. The colonial era left a significant mark on historic centers such as Nelson's Dockyard in English Harbour (Antigua and Barbuda), a UNESCO World Heritage Site, coastal fortifications such as Brimstone Hill Fortress (Saint Kitts and Nevis) and Fort Louis in Marigot (Saint Martin, France), and strategic ports such as Road Town (British Virgin Islands, United Kingdom) and Charlotte Amalie (U.S. Virgin Islands, United States), which testify to the archipelago's role in trade routes between Europe and the Americas. Over time, a strong Caribbean cultural identity has developed, expressed through musical traditions, local festivals, crafts, and a vibrant contemporary artistic production, the result of the encounter between European, African, and indigenous cultures.

From a naturalistic perspective, the Leeward Islands offer an extremely rich landscape mosaic, where tropical forests like Guadeloupe National Park (Guadeloupe, France) and the protected areas of Montserrat alternate with verdant mountains like Mount Liamuiga (Saint Kitts and Nevis) and Nevis Peak (Saint Kitts and Nevis), and spectacular coastlines like that of Virgin Gorda (British Virgin Islands, United Kingdom), famous for the granite formations of The Baths. Rural areas like those of Barbuda (Antigua and Barbuda) and the interior of Saint Kitts and Nevis coexist with more developed coastal areas like Philipsburg (Sint Maarten, Netherlands) and Charlotte Amalie (US Virgin Islands, United States), creating a harmonious balance between nature and humanity. The coral reefs and crystal-clear waters surrounding islands such as Anguilla and the British Virgin Islands further contribute to the area's environmental richness, making it one of the most significant marine ecosystems in the Caribbean.

Geographically, the Lesser Antilles – Leeward Islands are located in the northeastern part of the Caribbean arc and include a system of islands belonging to different political jurisdictions, including independent territories and dependencies of the United Kingdom, France, the Netherlands and the United States, an element which contributes to the extraordinary cultural and institutional diversity of the region.

The main areas that make up the macro region are:

- ANGUILLA (BRITISH OVERSEAS TERRITORY), A CORAL ISLAND CHARACTERIZED BY PRISTINE BEACHES AND A RELAXED ATMOSPHERE
- ANTIGUA AND BARBUDA (INDEPENDENT STATE), KNOWN FOR ITS COMBINATION OF HISTORICAL HERITAGE AND COASTAL LANDSCAPES
- GUADELOUPE (OVERSEAS DEPARTMENT OF FRANCE), A VOLCANIC ARCHIPELAGO WITH A STRONG FRENCH CULTURAL IDENTITY
- MONTSERRAT (BRITISH OVERSEAS TERRITORY), A VOLCANIC ISLAND WITH A RECENT HISTORY LINKED TO THE ACTIVITY OF THE SOUFRIÈRE HILLS
- SAINT KITTS AND NEVIS (INDEPENDENT STATE), CHARACTERIZED BY MOUNTAINOUS RELIEFS AND IMPORTANT COLONIAL REMAINS
- SAINT BARTHÉLEMY (OVERSEAS COLLECTIVITY OF FRANCE), A SMALL ISLAND WITH A DISTINCTIVE HISTORICAL AND CULTURAL HERITAGE
- SINT MAARTEN (NETHERLANDS) AND SAINT MARTIN (FRANCE), AN ISLAND SHARED BETWEEN TWO NATIONS WITH A STRONG MULTICULTURAL IDENTITY
- BRITISH VIRGIN ISLANDS (BRITISH OVERSEAS TERRITORY), ARCHIPELAGO KNOWN FOR ITS GRANITE MORPHOLOGY AND MARINE ENVIRONMENTS
- U.S. VIRGIN ISLANDS (UNINCORPORATED TERRITORY OF THE UNITED STATES), CHARACTERIZED BY A HISTORICAL AND NATURAL HERITAGE OF GREAT SIGNIFICANCE

The main international gateways are:

- V.C. Bird International Airport in St. John's (Antigua and Barbuda), the main hub for the Leeward Islands archipelago
- Princess Juliana International Airport in Sint Maarten (Netherlands), a strategic hub for many islands in the region
- Cyril E. King International Airport in St. Thomas, U.S. Virgin Islands, is the main gateway to the Virgin Islands.
- Robert L. Bradshaw International Airport in Basseterre (Saint Kitts and Nevis), an important gateway to the central islands of the archipelago
- Pointe-à-Pitre Le Raizet International Airport (Guadeloupe – France), main connection for the French area of the Leeward Islands

The Lesser Antilles – Leeward Islands thus constitute an extraordinarily rich and diverse island system, where colonial history, multicultural identity, and highly evocative natural landscapes intertwine in a harmonious narrative, offering an authentic experience that is representative of the complexity and beauty of the entire Caribbean space.

LESSER ANTILLES – LEEWARD ISLANDS (NORTHERN) PET-FRIENDLY TRIP THROUGH OPEN NATURE, COASTAL VILLAGES AND AUTHENTIC LANDSCAPES

PLACES AND EXPERIENCES FOR A TRIP WITH YOUR FOUR-LEGGED FRIENDS OFF THE BEATEN PATH

The Leeward Islands are an ideal destination for a pet-friendly trip thanks to their wide natural spaces, uncrowded beaches, and a landscape that encourages a relaxed pace. On many islands, especially outside the large resorts, you can roam freely between villages, coastlines, and trails, making the trip suitable for those who want to share the experience with their pets in authentic, uncongested settings.

- In Anguilla, the journey unfolds along wide, sparsely populated coastal areas such as Captain's Bay, one of the island's wildest beaches, characterized by long sandy stretches and the absence of large structures. The Savannah Bay area also offers open spaces ideal for leisurely walks. The island's flat interior allows for easy travel between small towns and coastal stretches.
- In Antigua and Barbuda, the environment is particularly favorable thanks to the presence of numerous bays and natural trails. In the southwest, Darkwood Beach (Antigua) offers large, less crowded spaces, while Fig Tree Drive (Antigua) is a scenic road that passes through tropical forests, plantations, and green hills, ideal for stops and short walks in natural surroundings. In Barbuda, the Low Bay area is one of the largest and most pristine beaches in the Caribbean, perfect for exploring.
- In Guadeloupe, pet-friendly travel takes place amidst nature and coastal villages. On Grande-Terre, Pointe des Châteaux is a peninsula characterized by open trails, cliffs, and ocean views, where you can walk in wide, breezy spaces. On the island of Basse-Terre, the peripheral areas of Guadeloupe National Park offer less frequented forest trails, among tropical vegetation and waterways.
- Montserrat is ideal for those seeking absolute tranquility. The Woodlands Beach area offers a wide, uncrowded, dark-sand beach, while the Centre Hills trails lead through tropical forests along quiet nature trails. The island, with little urbanization, allows for exploration in open, authentic environments.
- In Saint Kitts and Nevis, pet-friendly travel takes place amidst nature and less-traveled coastal landscapes. In Nevis, the Pinney's Beach area offers long sandy stretches overlooking the sea and the nearby St. Kitts skyline. Further inland, trails at the foot of Nevis Peak lead through tropical vegetation and cooler environments. In Saint Kitts, the southeastern peninsula around Majors Bay features less-visited coastal stretches.
- Despite its more exclusive character, Saint Barthélemy boasts some lesser-known natural areas. Anse de Grand Fond is a wild, rocky bay, less crowded than other beaches on the island, while the hilly inland trails offer short scenic hikes through dry vegetation and ocean views.
- In Sint Maarten and Saint Martin, the journey takes you away from the most touristy areas. On Sint Maarten, Guana Bay offers a long, open, and less crowded beach, while on the French island, Happy Bay (Saint Martin) is accessible via a short trail and maintains a secluded, natural atmosphere. The hilly interior offers quieter walks.
- In the British Virgin Islands, pet-friendly travel focuses on less urbanized islands. On Jost Van Dyke, beaches like White Bay offer wide open spaces and a relaxed atmosphere. On Anegada, a flat coral island, the expanses of Loblolly Bay allow for long walks in complete freedom.
- In the U.S. Virgin Islands, the journey unfolds between protected nature and open spaces. On Saint Croix, the Sandy Point National Wildlife Refuge is a vast natural area (access is restricted) characterized by dunes and wild beaches. On Saint John, several trails in the Virgin Islands National Park allow you to explore nature amidst forests and less frequented bays.

Taken together, the Leeward Islands offer an ideal environment for a pet-friendly trip, featuring open spaces, undeveloped nature, and a relaxed pace. Between wild beaches, coastal trails, and authentic villages, the trip becomes a shared, free, and deeply immersive experience in the Caribbean landscape.





DID YOU KNOW?

Did you know that the Northern Leeward Islands represent one of the most fragmented and diverse island systems in the Caribbean, where very close islands can belong to completely different states and territories?

Geographically, this area combines islands of both volcanic and limestone origin: green, hilly reliefs like those of Saint Kitts and Nevis alternate with lower, coral islands like Anguilla, creating completely different landscapes in just a few kilometers of sandy coasts, sheltered bays, and inland ridges.

Historically, the area reflects one of the most complex colonial stratifications in the Caribbean, with British, French, Dutch, and American influences still evident today in the language, architecture, and administrative structure of the individual islands, which are often divided despite their geographical proximity.

From a travel perspective, the short distances between the islands translate into a fragmented and multipolar experience, where every move can mean a change of state, culture, and landscape, making the archipelago extremely dynamic and diverse.

An island group where geographical proximity and cultural fragmentation create one of the most complex and fascinating mosaics in the Caribbean.



LESSER ANTILLES – WINDWARD ISLANDS (SOUTHERN) – AMONG VOLCANIC ISLANDS, CREOLE CULTURES AND AUTHENTIC TROPICAL LANDSCAPES



The Lesser Antilles – Southern Windward Islands represent one of the most authentic and lush expressions of the Caribbean, a collection of islands where urban centers like Fort-de-France (Martinique – France), Castries (Saint Lucia), Bridgetown (Barbados), and St. George's (Grenada) alternate with smaller towns and coastal communities like Soufrière (Saint Lucia), Speightstown (Barbados), Gouyave (Grenada), and Scarborough (Tobago), immersed in intense tropical landscapes. The territory is dominated by a strong volcanic influence, with mountainous reliefs such as Mont Pelée (Martinique – France), Gros Piton and Petit Piton (Saint Lucia), and Mount Saint Catherine (Grenada), flanked by coastal plains like those of western Barbados and cultivated valleys like Mabouya Valley (Saint Lucia) and St. Andrew Parish (Grenada). The coastlines are extremely varied, alternating between sandy beaches such as Crane Beach (Barbados) and Grande Anse Beach (Grenada), sheltered bays such as Marigot Bay (St. Lucia) and Carlisle Bay (Barbados), and rocky stretches facing the ocean such as those on the Atlantic coast of Martinique and the north-eastern coast of Tobago.

Before the arrival of Europeans, these islands were inhabited by Arawak and later Carib peoples, who developed social systems based on fishing, agriculture, and a network of inter-island trade. Traces of their presence are visible in archaeological sites such as Banwari Trace (Tobago), one of the oldest human settlements in the Caribbean, Pearls Archaeological Site (Grenada), evidence of pre-Columbian villages, and the Argyle Petroglyphs (Saint Vincent – Saint Vincent and the Grenadines, geographical area of the Windward Islands), famous rock carvings attributed to indigenous peoples, as well as in cultural traditions still present today. From the 17th century, the Windward Islands were disputed between France and the United Kingdom, giving rise to a cultural mosaic still evident in the local languages, architecture, and traditions. The colonial era left its mark in historic centers like Bridgetown (Barbados), a UNESCO World Heritage Site, fortifications like Fort George (Grenada) and Morne Fortune (Saint Lucia), and ports like Castries (Saint Lucia) and St. George's (Grenada), which played a key role in Caribbean trade routes. Over time, a strong Creole identity has developed, expressed through music, cuisine, festivals, and a cultural production that blends African, European, and indigenous influences.

From a naturalistic perspective, the Windward Islands offer some of the most lush landscapes in the entire Caribbean, with rainforests like those of Morne Trois Pitons National Park (Dominica), green mountains and slopes covered in tropical vegetation like those in the interior of Martinique and Saint Lucia, and rivers like the River Antoine (Grenada) and the Constitution River (Barbados). Rural areas, like the interior of Grenada and the historic plantations of Barbados, coexist with more developed coastal areas like the west coast of Barbados and the tourist areas of Saint Lucia, creating a harmonious balance between nature and humanity. The waters surrounding the islands, particularly clear and rich in biodiversity, include coral reefs and remarkable seabeds, such as those of Buccoo Reef (Tobago) and the west coast of Grenada.

Geographically, the Lesser Antilles – Windward Islands extend in the southeastern portion of the Caribbean arc and constitute an island system of predominantly volcanic origin, with the exception of Barbados, a coral formation distinct from the rest of the archipelago, an element that contributes to the geomorphological variety of the region.

The main areas that make up the macro region are:

- MARTINIQUE (OVERSEAS DEPARTMENT OF FRANCE), CHARACTERIZED BY A STRONG LINK WITH FRENCH CULTURE AND VOLCANIC LANDSCAPES
- SAINT LUCIA (INDEPENDENT STATE), KNOWN FOR ITS ICONIC VOLCANIC RELIEFS AND NATURAL BAYS
- GRENADA (INDEPENDENT STATE), KNOWN FOR ITS TROPICAL FORESTS AND AGRICULTURAL TRADITIONS
- BARBADOS (INDEPENDENT STATE), A CORAL ISLAND WITH A STRONG CULTURAL AND HISTORICAL IDENTITY
- TOBAGO IS CHARACTERIZED BY WELL-PRESERVED NATURAL ENVIRONMENTS AND DIVERSE COASTLINES

The main international gateways are:

- Grantley Adams International Airport in Bridgetown, Barbados, is the main hub for the southeastern Caribbean.
- Hewanorra International Airport (Saint Lucia), strategic access to the island and surrounding areas
- Maurice Bishop International Airport in St. George's (Grenada), the main connection to Grenada
- Martinique Aimé Césaire International Airport in Fort-de-France (Martinique – France), gateway to the French area
- A.N.R. Robinson International Airport, Crown Point (Tobago), direct access to Tobago and surrounding areas

The Lesser Antilles – Windward Islands thus constitute an intense and deeply distinctive island system, where volcanic nature, Creole cultures and tropical landscapes intertwine in an authentic and engaging balance, offering a rich, varied Caribbean experience far from the most predictable stereotypes.

LESSER ANTILLES – WINDWARD ISLANDS (SOUTHERN) PET-FRIENDLY TRIP AMONG VOLCANIC NATURE, OPEN BEACHES AND AUTHENTIC VILLAGES

PLACES AND EXPERIENCES FOR A TRIP WITH YOUR FOUR-LEGGED FRIENDS OFF THE BEATEN PATH

The southern Windward Islands offer a perfect setting for a pet-friendly trip thanks to their wide natural spaces, sparsely populated beaches, and rural areas where the pace is slow and tourism is less concentrated than in other parts of the Caribbean. The journey unfolds along windy Atlantic coasts, tranquil Caribbean bays, and inland areas characterized by tropical vegetation and nature trails.

- In Martinique, the trip focuses on less frequented natural and coastal areas. The Presqu'île de la Caravelle peninsula offers open trails through dry vegetation, mangroves, and cliffs overlooking the ocean, with wide, scenic routes. The Anse Noire area, one of the island's few dark-sand beaches, is immersed in an isolated natural setting, while the rural areas near Sainte-Marie preserve a traditional, sparsely populated agricultural landscape.
- In Saint Lucia, pet-friendly travel takes place between coastal villages and volcanic nature. The Anse La Raye area is an authentic fishing village, with a simple and uncrowded coastline. The Dennery area offers wilder coastlines, with cliffs and small local settlements. Inland, the trails around the Morne Coubaril Estate pass through plantations and tropical vegetation in a rural setting.
- In Grenada, the experience unfolds between nature and sparsely populated coastlines. Levera Beach, in the north of the island, is a wide, natural area with views of the nearby islets and the lagoon behind it. The east coast near La Sagesse offers quiet beaches and lagoon environments ideal for relaxing walks. The interior around Grand Etang National Park offers trails immersed in tropical forest.
- In Barbados, pet-friendly travel focuses on the east coast and rural areas. Bathsheba offers an open Atlantic landscape, with rock formations and wide, windswept beaches. St. Andrew Parish retains a sparsely populated, hilly agricultural landscape, while the southeast coast around Silver Sands features open spaces and rough seas, ideal for walking.
- In Tobago, the journey takes place on one of the most natural islands in the area. The Englishman's Bay area is a secluded bay surrounded by tropical forest, with a wide, uncrowded beach. The Parlatuvier area is a small coastal village surrounded by nature, while the Main Ridge Forest Reserve offers forest trails among the oldest protected areas in the Caribbean.

Taken together, the southern Windward Islands offer an authentic and natural pet-friendly experience, where open beaches, rural villages, and tropical forests create an ideal setting for traveling with your pets. The slow pace and low levels of urbanization in many areas allow for a free and immersive exploration of the Caribbean landscape.





DID YOU KNOW?

Did you know that the southern Windward Islands are among the youngest geological areas in the Caribbean, formed primarily by volcanic activity still visible in the morphology of many of the islands?

Geographically, this archipelago is dominated by mountainous reliefs, with volcanic peaks, rainforests, and rugged coastlines overlooking both the Atlantic Ocean and the Caribbean Sea, creating very different microclimates even within the same island.

Historically, these islands were profoundly influenced by the Carib and Arawak populations before European arrival, and subsequently by a long period of French and British colonial rule, which generated a strong cultural mix still evident today in the languages, music, and local traditions.

From a travel perspective, the area is characterized by a sense of continuous immersion in nature: connections are slower, distances are more "vertical" than horizontal, and the experience tends to unfold between coastal villages, inland forests, and isolated panoramic points.

An archipelago where volcanic origins, Creole identity, and intense nature define a profound and highly scenic Caribbean experience.



LESSER ANTILLES – LEEWARD ANTILLES (SOUTHWEST) – BETWEEN DUTCH CULTURES, TROPICAL LAGOONS AND ARID COASTAL LANDSCAPES



The Lesser Antilles – Leeward Antilles – represent the southwestern sector of the Caribbean, a group of islands characterized by a strong Dutch historical and cultural identity and highly recognizable arid tropical and coastal landscapes. Within this context, urban centers such as Oranjestad (Aruba – Kingdom of the Netherlands) and Willemstad (Curaçao – Kingdom of the Netherlands) stand out, alongside smaller settlements and coastal communities such as San Nicolas (Aruba) and Barber (Curaçao), which maintain a direct connection to the land and local traditions. The natural environment is characterized by low, rocky coasts such as those in the Hudishibana area (Aruba) and the northern coast of Westpunt (Curaçao), inland lagoons such as Rooislag Bay Lagoon (Aruba) and the sheltered waters of Sint Anna Bay (Curaçao), and protected inlets such as Spanish Water (Curaçao) and the southwest coast of Aruba, where sandy beaches such as Eagle Beach (Aruba) and Cas Abao Beach (Curaçao) alternate, rocky stretches overlooking the Caribbean Sea such as the coast of Shete Boka (Curaçao) and the reefs of Boca Prins (Aruba), and lagoon areas of great ecological value such as the coastal system of the Arikok National Park coastal wetlands (Aruba) and the wetlands of Christoffel Park surroundings (Curaçao).

Before the arrival of Europeans, these islands were inhabited by the Arawak people, particularly Caquetío groups, who developed communities based on fishing, gathering, and forms of agriculture adapted to an arid environment. Evidence of their presence is visible in archaeological sites such as Fontein Cave (Aruba), known for its pre-Columbian cave paintings, and Hato Caves (Curaçao), where engravings and traces of indigenous settlement have been discovered, as well as in cultural elements still recognizable today in toponymy and some local traditions. Beginning in the 17th century, the islands were integrated into the Dutch colonial sphere, which profoundly influenced their urban, linguistic, and administrative structure. The colonial legacy is evident in historic centers such as Willemstad (Curaçao), a UNESCO World Heritage Site for its colorful colonial architecture, in defensive forts such as Fort Zoutman (Aruba), and in port facilities such as the Port of Willemstad, historically strategic for trade in the Caribbean Sea.

From a naturalistic perspective, the Leeward Antilles are distinguished by a semi-arid environment unique in the Caribbean, where cacti, xerophilous vegetation, and windswept coastlines like those of Wariruri Bay (Aruba) and Boca Grandi (Aruba) alternate with marine areas of extraordinary clarity, such as the waters of Baby Beach (Aruba) and the coastal areas of Klein Curaçao (Curaçao). The inland areas are characterized by hilly reliefs like Christoffelberg (Curaçao) and ancient volcanic rock formations, such as the limestone plateaus of the Hato Plateau (Curaçao) and the arid ridges of Arikok National Park Interior (Aruba). The coasts are home to marine parks and coral reefs, such as those of the Aruba Marine Park and the southern waters of Curaçao, rich in biodiversity and particularly prized for their environmental integrity. Inland rural areas coexist with compact, developed urban areas along the coast such as Santa Cruz (Aruba) and Tera Kora (Curaçao), creating a balance between nature and human presence typical of these islands.

Geographically, the Lesser Antilles – Leeward Antilles are located in the southwestern portion of the Caribbean Sea, off the coast of Venezuela, and constitute an island system distinct both for its geological origin and for its climatic conditions, drier than the rest of the Caribbean archipelago.

The main areas that make up the macro region are:

- ARUBA (KINGDOM OF THE NETHERLANDS) – ISLAND CHARACTERIZED BY ARID LANDSCAPES, WHITE BEACHES AND A STRONG INTERNATIONAL TOURIST VOCATION
- CURAÇAO (KINGDOM OF THE NETHERLANDS) – AN ISLAND WITH A STRONG HISTORICAL IDENTITY, DUTCH COLONIAL ARCHITECTURE, AND A RICH URBAN CULTURAL LIFE

The main international gateways are:

- Oranjestad Queen Beatrix International Airport (Aruba – Kingdom of the Netherlands), the main hub for the island and connections to North and South America
- Willemstad Hato International Airport (Curaçao – Kingdom of the Netherlands), a strategic hub for the entire Southern Netherlands Antilles area

The Lesser Antilles – Leeward Antilles are thus configured as a compact and strongly identifiable island system, where Dutch culture, semi-arid landscapes and tropical coasts blend in an original and recognizable balance, offering a Caribbean experience different from other areas of the archipelago.

LESSER ANTILLES – LEEWARD ANTILLES (SOUTHWEST) PET-FRIENDLY TRIP BETWEEN ARID COASTS, OPEN BEACHES AND WILD NATURE

PLACES AND EXPERIENCES FOR A TRIP WITH YOUR FOUR-LEGGED FRIENDS OFF THE BEATEN PATH

The Southern Leeward Antilles offer a particularly suitable setting for a pet-friendly trip thanks to their open spaces, sparsely populated coastlines, and natural areas where tourism is sparse rather than concentrated. Aruba and Curaçao feature semi-arid, windy, and very airy landscapes, ideal for outdoor activities with pets, especially in less developed areas and along the Atlantic coasts.

- In Aruba, pet-friendly travel focuses on the largest natural areas and less crowded beaches. Arikok National Park offers a wide, open environment, with trails among cacti, rocky hills, and coastal stretches where the landscape rapidly changes between desert and ocean. The areas of Boca Prins and Dos Playa represent wild, undeveloped areas, with wide, windy beaches immersed in nature. The rural area of Santa Cruz retains a more authentic interior atmosphere, with secondary roads and arid landscapes typical of the island.
- In Curaçao, the journey unfolds between rugged coastlines and semi-arid nature. Christoffel National Park offers vast natural spaces with scenic inland roads and trails through dry vegetation, ideal for an immersive experience in open spaces. Shete Boka National Park allows you to observe the sea breaking in natural caves along the north coast, with easily accessible vantage points scattered throughout. The rural areas near Westpunt preserve a wilder and less urbanized landscape, with small bays and isolated coastal stretches.

Taken together, Aruba and Curaçao offer an authentic and natural pet-friendly experience, where windswept coastlines, open parks, and sparsely populated rural areas allow for greater freedom of travel. The semi-arid setting, short distances, and the presence of undeveloped spaces make these islands an ideal destination for those seeking nature, tranquility, and outdoor activity in the Southern Caribbean.





DID YOU KNOW?

Did you know that the Southern Leeward Antilles, like Aruba and Curaçao, are among the driest areas in the entire Caribbean basin, with a landscape that resembles semi-desert ecosystems rather than classic tropical vegetation?

Geographically, these islands are distinguished by rocky coasts, brackish lagoons, ancient coral formations, and low-lying hills, shaped by constant winds and a dry climate that has favored the growth of xerophilous vegetation and cacti.

Historically, the area was strongly influenced by Dutch colonization, which left a clear mark on the architecture of the urban centers, the commercial ports, and the multicultural structure of the islands, enriched over time by Caribbean, Latin American, and European influences.

From a travel perspective, these islands offer a different experience than the rest of the Caribbean: fewer tropical forests and more chromatic contrasts between turquoise sea, arid land and colorful cities, with easy travel and compact territories that are easily explored.

An archipelago where a dry climate, Dutch identity, and essential coastal landscapes define a unique and recognizable face of the Southern Caribbean.



CONTACT US

**OUR EXCLUSIVE SUPPORT
TO PERSONALIZE YOUR
ITINERARY ACCORDING
TO YOUR NEEDS AND
WISHES**



WOULD YOU LIKE TO REQUEST A QUOTE?

We hope this travel planner has been of interest to you and has provided inspiration for your next journey.

If you would like to organize your next trip, please click on the “Itinerary and Quotation Request” button.

Complete and submit the form, and we will contact you shortly to create your personalized travel quotation.

ITINERARY AND QUOTATION REQUEST



Atlantic Travel & Tours Ltd

London, New York
Los Angeles, Miami
Denver

ATLANTIC TRAVEL & TOURS LTD

HEADQUARTERED IN THE UNITED STATES AND THE UNITED KINGDOM

REGISTERED COMPANIES

USA - DENVER - COLORADO - COMPANY REGISTRATION NUMBER: 202 110 96 014

UK - LONDON - COMPANY REGISTRATION NUMBER: 130 288 33

E-MAIL

USA - unitedstatesadministration@atlantictourstravel.com

UK - unitedkingdomadministration@atlantictourstravel.com

WEBSITE

www.visitatlantictraveltours.com

FULL CONTACT DETAILS

www.visitatlantictraveltours.com/contact