

ATLANTIC TRAVEL & TOURS

EDUCATIONAL TRAVELS FOR SCHOOLS,
UNIVERSITIES, CULTURAL INSTITUTIONS

A U S T R A L I A
I N S P I R A T I O N A L B R O C H U R E



WWW.VISITATLANTICTRAVELTOURS.COM

FROM THE CEO

Dear educators, researchers, and cultural professionals,

Atlantic Travel & Tours is your dedicated partner in organizing **tailor-made journeys** for **secondary schools, universities, and cultural institutions**. This brochure presents a curated selection of **interdisciplinary itineraries** across Australia, designed to meet the specific needs of each type of organization:

- **Secondary Schools - Dynamic and exploratory educational journeys**
- **Universities - In-depth research and experiential learning opportunities**
- **Cultural Institutions - Cultural exchange and heritage-focused projects**

Each itinerary is crafted to foster active learning and engagement, combining **innovative content with authentic places**.

We understand that every group has different goals and timelines. That's why we offer **full customization of duration, themes, and activities**—ensuring a truly unique and tailored experience.

Our team will support you at every stage, from planning to execution, guaranteeing **flexibility, high-quality service, and strong educational value**.

Choose Atlantic Travel & Tours to turn your journeys into memorable experiences of growth and exchange.



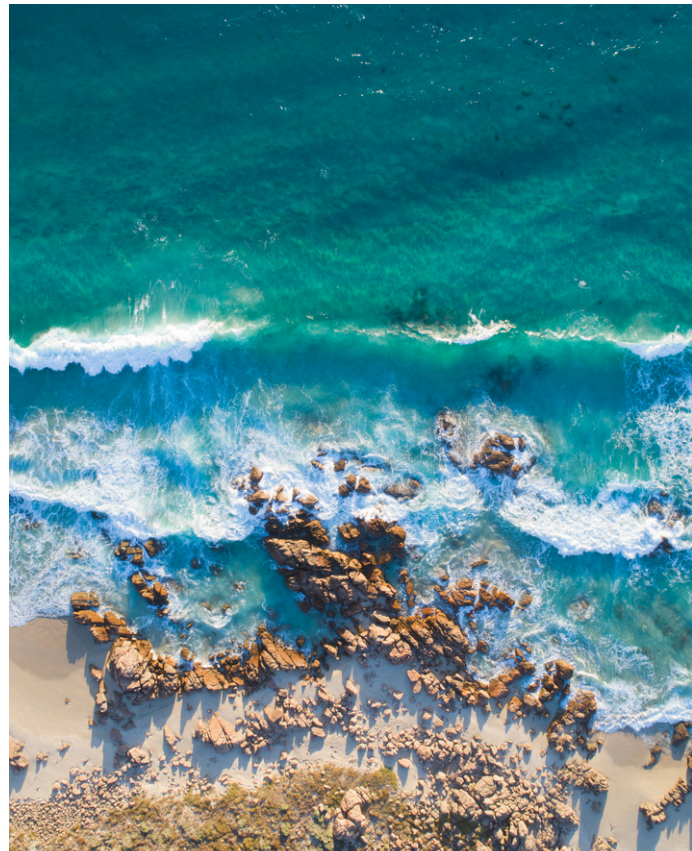
Steve Tabacchi

DR. STEVE TABACCHI
CEO - FOUNDER
ATLANTIC TRAVEL & TOURS

AUSTRALIA

BETWEEN ANCESTRAL CULTURES, EXTREME BIODIVERSITY AND CONTINENT-ISLAND PEDAGOGIES

Australia is a living laboratory where remote environments, multicultural cities, and ancient indigenous cultures offer unique educational experiences. From the tropical forests of Queensland to the desert plateaus, from urban coasts to Aboriginal islands, the country stimulates profound reflection on ecology, justice, and knowledge. Secondary schools can explore biodiversity, environmental practices, and civil rights. Universities find space to analyze the relationships between science, memory, and coloniality. Cultural institutions can initiate projects with archives, indigenous communities, and participatory museums. Australia thus emerges as an pedagogical continent, where the coexistence of species, knowledge, and cultures opens transformative visions for the future.





NORTHERN AUSTRALIA

NORTHERN TERRITORY

With vast Aboriginal lands, red deserts, and national parks, the Northern Territory is a prime place to learn about Indigenous cultures and ecological resilience.

Secondary schools: explore Aboriginal cultures, orality, and interethnic coexistence.

Universities: analyze indigenous peoples' rights, environmental co-management, and cultural sovereignty.

Cultural institutions: they launch projects with remote communities on rock art, storytelling, and knowledge transmission.



WESTERN AUSTRALIA

WESTERN TERRITORY

Vast and diverse, Western Australia encompasses mining towns, pristine coastlines and Aboriginal areas of great historical and cultural significance.

Secondary schools: study extractive economies, environmental protection, and local cultures.

Universities: conduct research on mining sustainability, urban transformation, and environmental rights.

Cultural institutions: promote activities on archaeology, collective memory, and the visual languages of indigenous communities.



EASTERN AUSTRALIA

NEW SOUTH WALES

The cultural and institutional heart of Australia, New South Wales combines metropolises like Sydney with coastal landscapes, rural areas, and national parks. A region to explore urban diversity, educational environments, and cultural diversity.

Secondary schools: reflect on urban sustainability, colonial memory, and intercultural citizenship.

Universities: they study models of urban regeneration, global migration, and environmental justice.

Cultural institutions: collaborate with museums, indigenous communities, and art centers on journeys around memory and identity.



EASTERN AUSTRALIA

CAPITAL TERRITORY

Canberra is home to Australia's leading political and cultural institutions, and is a centre of excellence for research, diplomacy and democratic governance.

Secondary schools: explore federal institutions, civics, and decision-making.

Universities: they analyze public policies, urban sustainability, and cultural innovation.

Cultural institutions: they establish collaborations with national archives, public museums, and documentation centers.



EASTERN AUSTRALIA

QUEENSLAND

From tropical rainforests to the Great Barrier Reef, Queensland is a laboratory of biodiversity, indigenous communities and coastal cultures.

Secondary schools: participate in projects on marine conservation, resource management, and Aboriginal culture.

Universities: they develop research on climate resilience, sustainable tourism, and biocultures.

Cultural institutions: collaborate with galleries and archives to promote indigenous narratives and environmental art practices.



EASTERN AUSTRALIA

VICTORIA

Victoria combines a strong cultural vocation with a focus on civil rights, education, and public art. Melbourne is one of the most liveable cities in the world.

Secondary schools: they engage with practices of inclusion, migrant memory, and active citizenship.

Universities: they analyze processes of urban transformation, social justice, and educational innovation.

Cultural institutions: they launch programs on multiculturalism, community archiving, and artistic co-creation.



SOUTHERN AUSTRALIA

SOUTH AUSTRALIA

A region of deserts, vineyards and slow-moving cities, South Australia is a meeting point of arid ecology, rural identity and sustainable practices.

Secondary schools: explore the desert landscape, regenerative agriculture, and local cultures.

Universities: they study climate adaptation, water management, and remote area governance.

Cultural institutions: co-design activities with rural centers on oral heritage, environmental memory, and community art.



SOUTHERN AUSTRALIA

TASMANIA

A wild and remote island, Tasmania is home to pristine environments, complex colonial histories, and resilient communities.

Secondary schools: participate in courses on forest biodiversity, ecological justice, and local heritage.

Universities: they develop research on island sustainability, endemic species, and environmental education.

Cultural institutions: collaborate with archives and art centers on projects on cultural landscapes and historical memory.



AUSTRALIA - EXTERNAL TERRITORIES

NORFOLK ISLAND, CHRISTMAS ISLAND, AND OTHER ISLANDS IN THE SOUTHWESTERN PACIFIC AND EASTERN INDIAN OCEAN

These remote territories offer unique natural environments and little-explored histories, linked to deportations, biodiversity, and marginalized island cultures.

Secondary schools: participate in courses on isolation, historical migrations, and endemic biodiversity.

Universities: they study peripheral governance, island conservation, and climate adaptation.

Cultural institutions: they launch projects on forgotten heritage, ocean orality, and environmental coexistence.



DEEP ECOLOGIES, INDIGENOUS CULTURES AND INSULAR HORIZONS

AN INTERDISCIPLINARY JOURNEY TO AUSTRALIA

Australia is an island-continent stretching between deserts, rainforests, multicultural cities, and remote territories. Traversing its landscape means entering into a dialogue with Aboriginal memories, climate challenges, and multispecies relationships. This itinerary intersects natural parks, research centers, indigenous communities, and remote islands, fostering the intersection of academic and ancestral knowledge. Secondary schools will explore biodiversity, civil rights, and intercultural coexistence, while universities will focus on studies on environmental governance, climate migration, and indigenous pedagogies. Cultural institutions will co-design itineraries with museums, living archives, and local laboratories. Australia thus emerges as a radical educational platform, where we can imagine more just ecologies and shared futures.

DAY 1 – SYDNEY (NEW SOUTH WALES): GLOBAL CITY, DEEP WATER

Sydney, a coastal metropolis and Australia's cultural heart, opens a reflection on cities, migration, and environmental justice. The centerpiece will be the **Australian Museum** and the **University of Sydney's** urban campus.

Secondary schools: analyze the impact of coastal urbanization and marine biodiversity.

Universities: they study urban regeneration, climate justice, and environmental colonialism.

Cultural institutions: collaborate with migrant museums and archives on projects on memory and identity.

DAY 2 – BLUE MOUNTAINS (NEW SOUTH WALES): SACRED LANDSCAPES AND ECOLOGICAL MANAGEMENT

Just a few hours from Sydney, the **Blue Mountains** are a World Heritage site where indigenous knowledge guides conservation. The **Blue Mountains Cultural Centre** and the **Dharug Research Institute** will be the hub.

Secondary schools: explore cultural landscapes and traditional fire management.

Universities: they study multispecies relationships and ecological co-management.

Cultural institutions: co-create narrative archives with Aboriginal elders and local artists.

DAY 3 – MELBOURNE (VICTORIA): CITIZENSHIP, EDUCATION, AND SOCIAL INNOVATION

Melbourne is a hub for educational experimentation and cultural participation. Its hub will be the **Melbourne Museum** and **RMIT University**.

Secondary schools: participate in courses on civic education, cultural mediation, and visual languages.

Universities: they study cultural policies, urban pedagogies, and social inclusion.

Cultural institutions: they launch projects with schools and communities on new languages of memory.



DAY 4 – ULURU-KATA TJUTA (NORTHERN TERRITORY): SACRED LAND AND INDIGENOUS COSMOLOGIES

Uluru is a central spiritual and geopolitical site for the Anangu people. Its centerpiece will be the **Mutitjulu Community Learning Centre** and the **ANU Indigenous Studies Hub**.

Secondary schools: reflecting on Aboriginal cosmologies and ecocultural resilience.

Universities: they analyze land stewardship practices, decolonization, and situated knowledge.

Cultural institutions: they document orality, songs and rituals together with local communities.

DAY 5 – CHRISTMAS ISLAND (OUTER TERRITORY): REMOTE ISLAND, BIODIVERSITY AND INVISIBLE MEMORIES

Christmas Island is an island platform of extreme ecologies and marginalized memories. Its centerpiece will be the **Christmas Island Field Research Station**.

Secondary schools: explore endemic biodiversity and the impact of insularity on daily life.

Universities: they analyze participatory environmental management, ecological migration, and island resilience.

Cultural institutions: they run workshops on multicultural identities, oral archives, and memory landscapes.

DAY 6 – CHRISTMAS ISLAND (EXTERNAL TERRITORY): OCEAN KNOWLEDGE AND ENVIRONMENTAL JUSTICE

On the second day, activities shift to local communities and the island's coastal areas. The focus will be the **Christmas Island Community Centre** and local ecotourism cooperatives.

Secondary schools: participate in courses on waste management, environmental education, and the island's circular economy.

Universities: they are deepening their studies on climate adaptation and coexistence between cultures and ecosystems.

Cultural institutions: co-design visual and sound narratives with artists and island residents.



WOULD YOU LIKE TO REQUEST A QUOTE?

We hope this brochure has been both enjoyable and inspiring for your next cultural-themed journey.

If you'd like to organize a trip with us, simply click the button below — you'll be directed to a form to fill out with all the necessary details. We'll get back to you shortly with a personalized quote tailored to your needs.

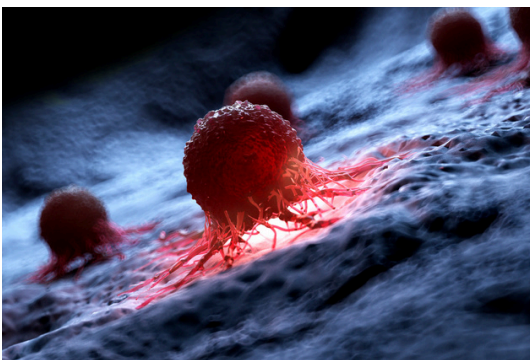
[QUOTE REQUEST](#)



OUR SUPPORT FOR SAFEGUARDING THE PLANET AND CANCER RESEARCH



WITH OUR TRAVELS, WE WANT TO OFFER OUR CUSTOMERS THE OPPORTUNITY TO CONTRIBUTE TO NON-PROFIT ORGANIZATIONS COMMITTED TO SOLVING THE FOLLOWING GLOBAL PROBLEMS



- CONSERVATION OF FLORA - FAUNA
- GLOBAL WARMING
- CANCER RESEARCH



Atlantic Travel & Tours Ltd

London, New York
Los Angeles, Miami
Denver

ATLANTIC TRAVEL & TOURS LTD

HEADQUARTERED IN THE UNITED STATES AND THE UNITED KINGDOM

REGISTERED COMPANIES

USA - DENVER - COLORADO - COMPANY REGISTRATION NUMBER: 202 110 96 014

UK - LONDON - COMPANY REGISTRATION NUMBER: 130 288 33

E-MAIL

USA - unitedstatesadministration@atlantictourstravel.com

UK - unitedkingdomadministration@atlantictourstravel.com

WEBSITE

www.visitatlantictraveltours.com

FULL CONTACT DETAILS

www.visitatlantictraveltours.com/contact